

Bicycle Safety Task Force Summary and Recommendations Report

Travis County Commissioners Court

May 3, 2016

Bicycle Safety Task Force

- **Introductions**
- **Charge** - Provide three (3) deliverables:
 - 1) A list of safety improvements for popular bike routes in unincorporated areas – funded with 2011 bond
 - 2) A list of bike projects for completing gaps in existing bikeway networks and new bikeways, and
 - 3) Design Policy e.g., shared-use paths vs. shared lanes; concrete vs. asphalt; shoulder width.

Bicycle Safety Task Force - Process

- **Biweekly Meeting Schedule of Task Force and Staff**
- Reviewed prior work
- All ages and abilities, Network Gaps, Safety Issues, Precinct
- Eliminated top candidates that could not fit to funding; Austin to Manor Trail, Old San Antonio Road, Circle to Fitzhugh along 290
- Prioritized and fit to funding
- Completed the BSTF Summary and Recommendations Report

Bicycle Safety Task Force

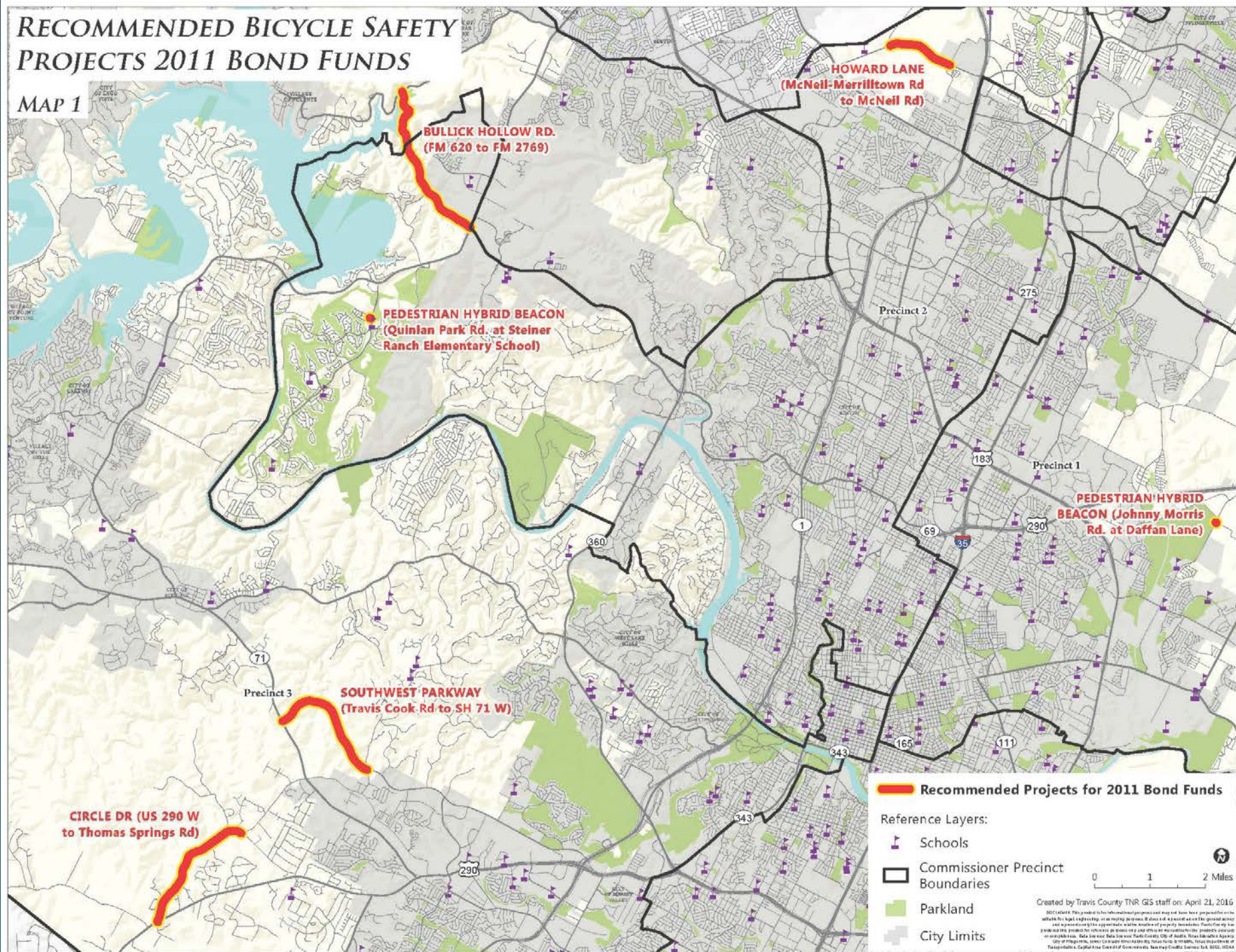
Table A - Recommended Bicycle Safety Projects - 2011 Bond Funds

Bicycle Safety Task Force Approved 4/20/2016

<u>Recommended Project</u>	<u>Project Description</u>	<u>Est. Cost</u>
• Pedestrian Hybrid Beacon (Johnny Morris Rd. at Daffan Lane)	Install Pedestrian Hybrid Beacon and approaches	\$87,000
• Pedestrian Hybrid Beacon (Quinlan Park Rd. at Steiner Ranch Elementary School)	Install Pedestrian Hybrid Beacon and approaches	\$87,000
• Howard Lane (McNeil Round Rock Rd. - McNeil Dr.)	Construct chipseal and restripe for 4'+ bike lane	\$150,000
• Bullick Hollow Road (RM 620 - FM 2769)	Construct 6' shoulders as designed ONLY. Will add lengths of 2' shoulders as budget allows	\$570,000
• Circle Drive (US 290 W - Thomas Springs Rd.) -Additional 2' shoulders	Construct 6' shoulders as designed ONLY. Will add lengths of 2' shoulders as budget allows	\$1,400,000 \$946,000
• Southwest Parkway (Travis Cook Rd. - SH 71 West)	Apply Slurry Seal	\$60,000
TOTAL		\$3,300,000

RECOMMENDED BICYCLE SAFETY PROJECTS 2011 BOND FUNDS

MAP 1



Bicycle Safety Task Force

TABLE B - CANDIDATE PROJECTS FOR FUTURE COUNTY AND CITY(IES) BOND ELECTIONS

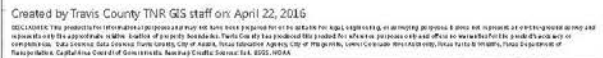
(BSTF APPROVED 4/20/2016)

PARK BONDS (OFF SYSTEM)						
<u>TRAIL NAME</u>	<u>SEGMENT</u>	<u>DISTANCE</u>	<u>JURIS.</u>	<u>COST</u>	<u>PRIORITY</u>	<u>COMMENTS</u>
Austin-to-Manor Trail	Decker Lane to Manor	2.9 miles	City/Co.	\$6 M	A	
Onion Creek Trail	Burleson Road to FM 973 (ABIA)	1.9 miles	City	TBD	B	
Onion Creek Trail	FM 973 (Timber Creek Sub)	.81 miles	City/Co.	TBD	B	Corp of Eng. Project
North Walnut Creek Ph II	WC Metro Park to IH 35	.97 miles	City	TBD	A	Under design
North Walnut Creek Ph III A	IH 35 to Blue Goose	3.8 miles	City/Co.	TBD	C	
North Walnut Creek Ph III B	Blue Goose to S. Walnut Creek Trail, or	3.0 miles	City/Co.	TBD	C	
Austin-to-Pflug. Trail	S. Walnut Creek Trail to Blue Goose	2.8 miles	City/Co.	TBD	B	MKT RR right of way (State)
Austin-to-Pflugerville Trail	Blue Goose to Pflugerville	6.4 miles	City/Co.	TBD	B	MKT RR right of way (State)
Gilleland Creek Greenbelt	Ben Fisher Park to FM 969	7.2 miles	City/Co.	TBD	B	

Bicycle Safety Task Force

ROAD BONDS (ON SYSTEM)						
ROAD NAME	SEGMENT	DISTANCE	JURIS.	COST	PRIORITY	COMMENTS
Circle Drive/Thomas Springs	SH 71 to US 290 W	4.0 miles	Co.	TBD	C	Complete remaining project
Old San Antonio Road	Austin CL to Hays Co. Line	3.2 miles	Co.	TBD	C	Needs Hays Co portion
Old Lockhart Road	Slaughter Lane to Thaxton Road	3.4 miles	City/Co.	TBD	C	Part of Master Plan
Hamilton Pool Road	RM 12 to Blanco County Line	9.4 miles	Co.	TBD	C	
FM 973/SH 130	FM 969 to SH 71	4.2 miles	State/City/Co.	TBD	C	Some Bike Facility
FM 973	Moore's Bridge Road to Elroy Road	.1 mile	State/City	\$ 0.142 Local Match	C	Shared use path, Project selected for TAP funding 2019
Elroy Road	Within ROW of SH130	.5 miles	State/Co.	\$0.114 Local Match	B	Add sidewalks, Project selected for TAP funding 2019
US 290 W Bypass	Circle Drive to Fitzhugh Rd.	1.9 miles	Co.	TBD	B	Bike trail w/in gas line ROW
Fitzhugh Road	US 290 W to Travis County Line	2.9 miles	Co.	\$4.0 M	C	Add shoulders

MAP 2



Bicycle Safety Task Force

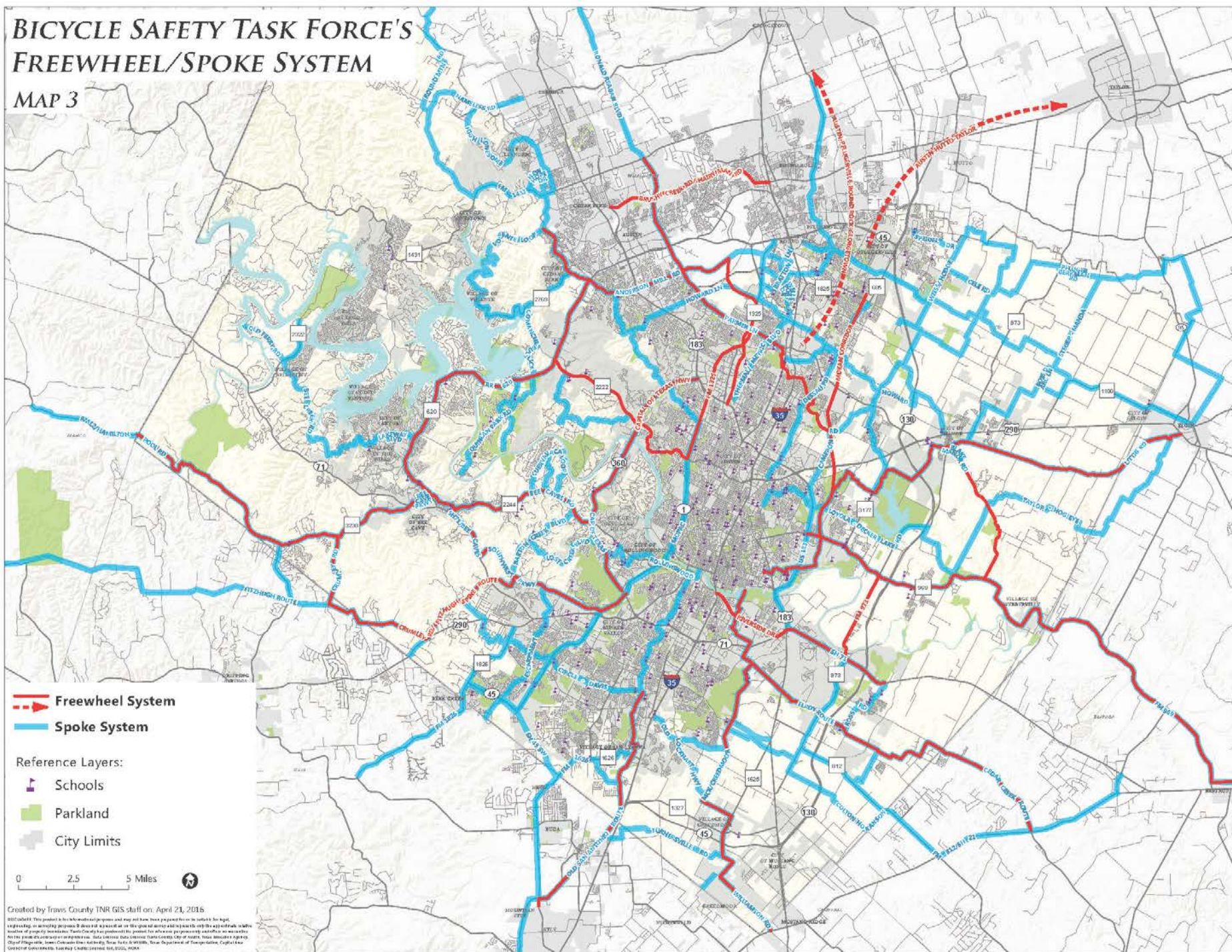
- **Freewheel System (Red)**
 - Eight plus good ways to get from urban Austin core to rural Travis County and other Metro locations
 - Grade separated or bicycle prioritized
 - All ages and ability 8 to 80 shared use path
 - Safe, dependable, easy to find and follow
 - Get through the “Donut of Danger”

Bicycle Safety Task Force

- **Spoke Routes (Blue)**
 - **Used frequently today or needed**
 - **Often on street facilities**
 - **Maintain or improve connectivity**
 - **Shoulder maintenance priority**

BICYCLE SAFETY TASK FORCE'S FREEWHEEL/SPOKE SYSTEM

MAP 3



Bicycle Safety Task Force

BSTF Recommendations

- Approve Table A - Recommended Bicycle Safety Projects - 2011 Bond Funds
- Approve Table B - Candidate Projects for Future County and City(ies) Bond Elections
- Approve Map 3 – Bicycle Safety Task Force’s Freewheel/Spoke System
- Approve a Bicycle/Pedestrian Planning position (FY 17 budget request)
- Adopt a Travis County Bicycle Master Plan (off-system and on-system facilities)
- Adopt policies that put bicycle and pedestrian transportation “on par” with motorized vehicular transportation
- Integrate bicycle way construction and maintenance, signage and striping into the TNR Annual Work Program
- Amend the subdivision and CIP design standards to include standards for the design of bicycle facilities

Bicycle Safety Task Force

BSTF Recommendations (continued)

- By 2017, integrate planned bicycle/pedestrian facilities into design and budget of the county's capital improvements projects and subsequent acquisition of ROW
- Integrate bicycle safety into the County's traffic safety program, including the setting of regulatory speed limits, installation of traffic signs, signals, & beacons
- Develop a "Vision Zero" policy that would reduce traffic fatalities and serious injuries through enforcement and education and engineering of the county's road system to design for safe speeds and minimize the conflict between bicycles/pedestrians and motor vehicles.
- Charter a Bicycle/Pedestrian Advisory Committee to provide input and feedback to the staff and court on bike and pedestrian related projects, programs, & policies