

The background image shows Barton Springs Pool in Austin, Texas. The water is a vibrant green color, indicating high turbidity. In the foreground, the pool's edge is visible with some people standing near the water. The background features lush green trees and a paved walkway. A lifeguard stand is visible on the right side of the pool.

# BARTON SPRINGS POOL TURBIDITY EVENT December 2018

City of Austin/Environmental Commission

June 19, 2019

David A. Johns, PG

City of Austin/Watershed Protection Department



# What Happened?





# What Happened?

Eliza Spring Stream



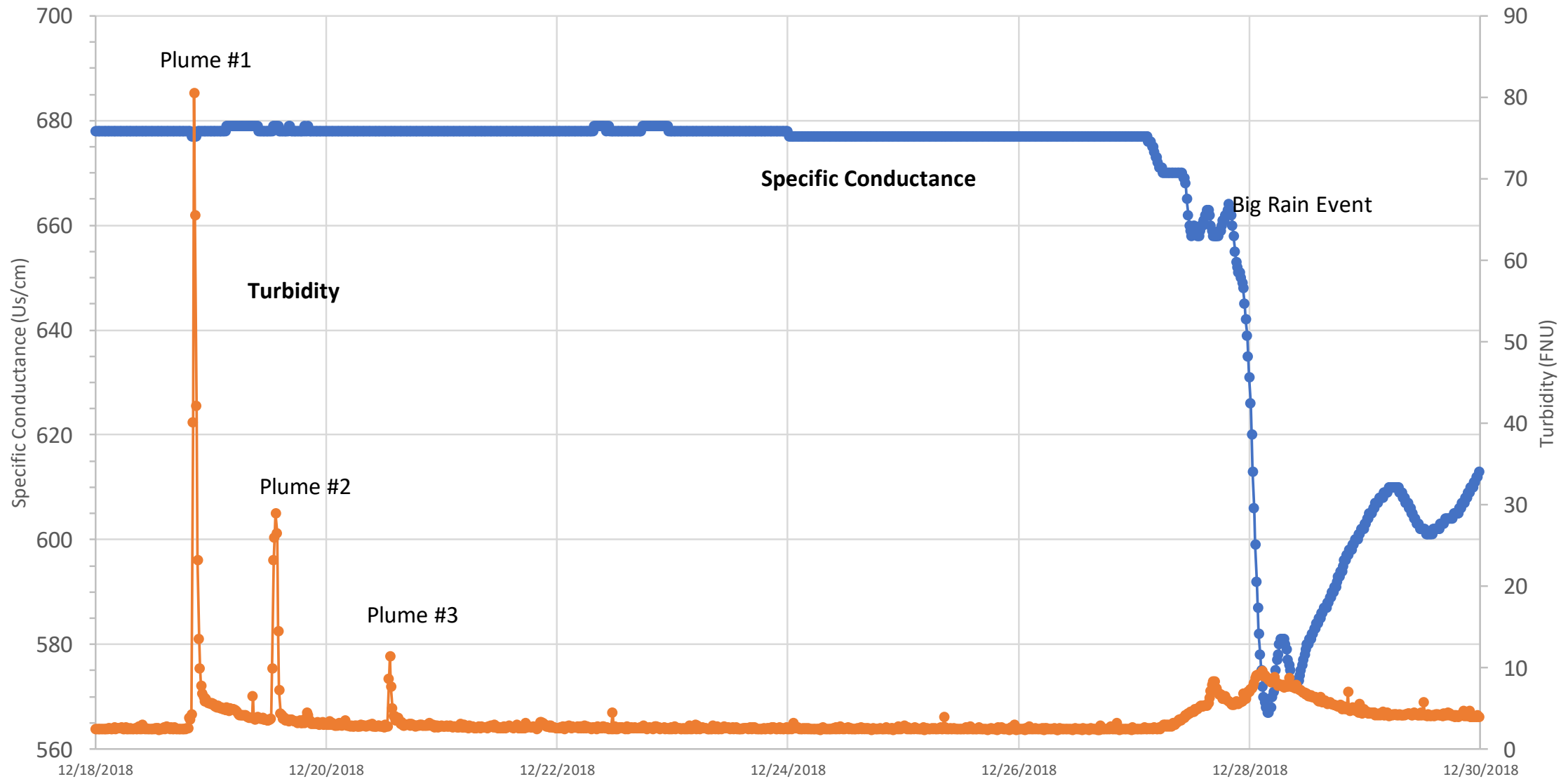
Upper Barton Spring



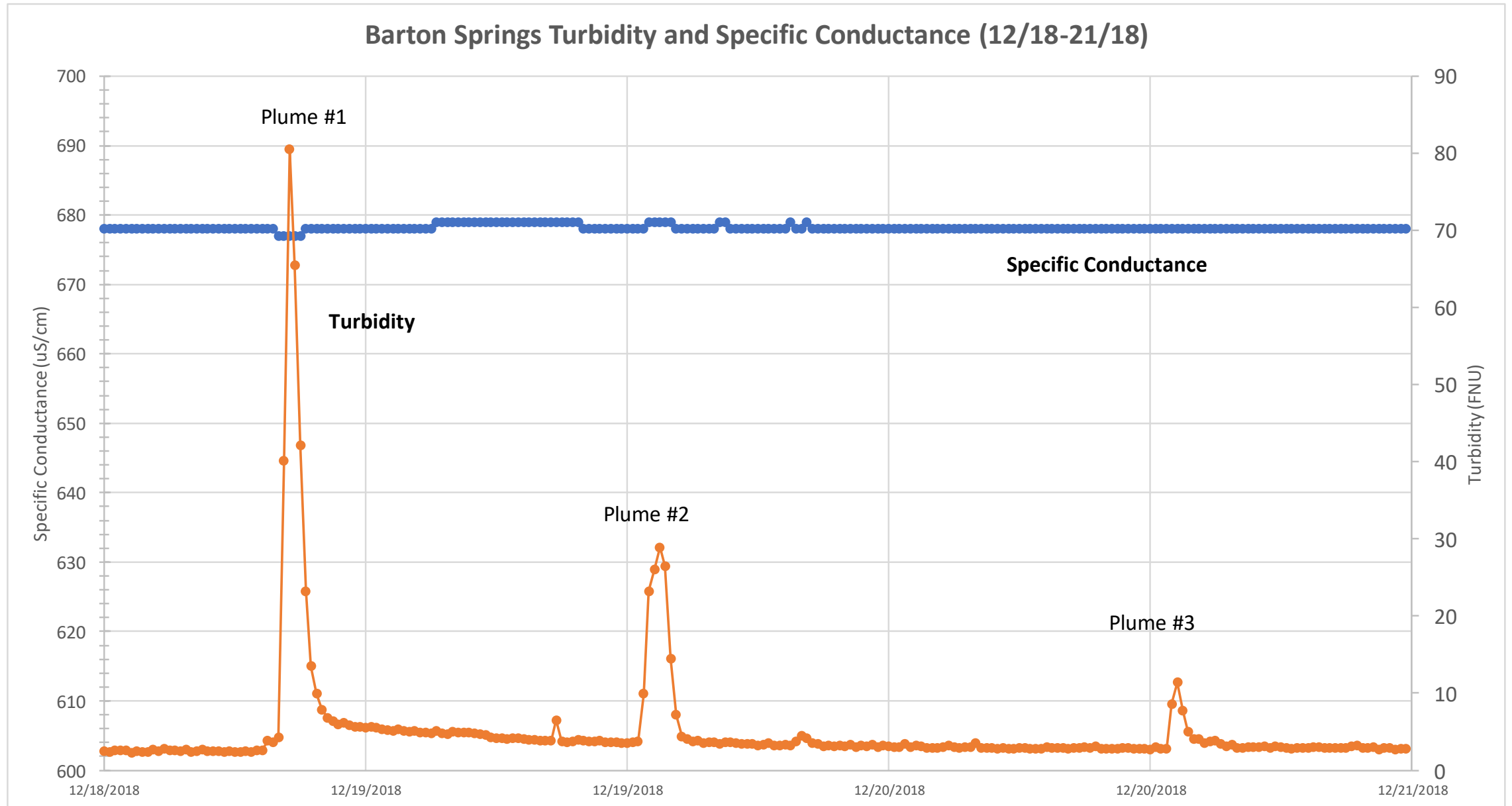


# What Happened?

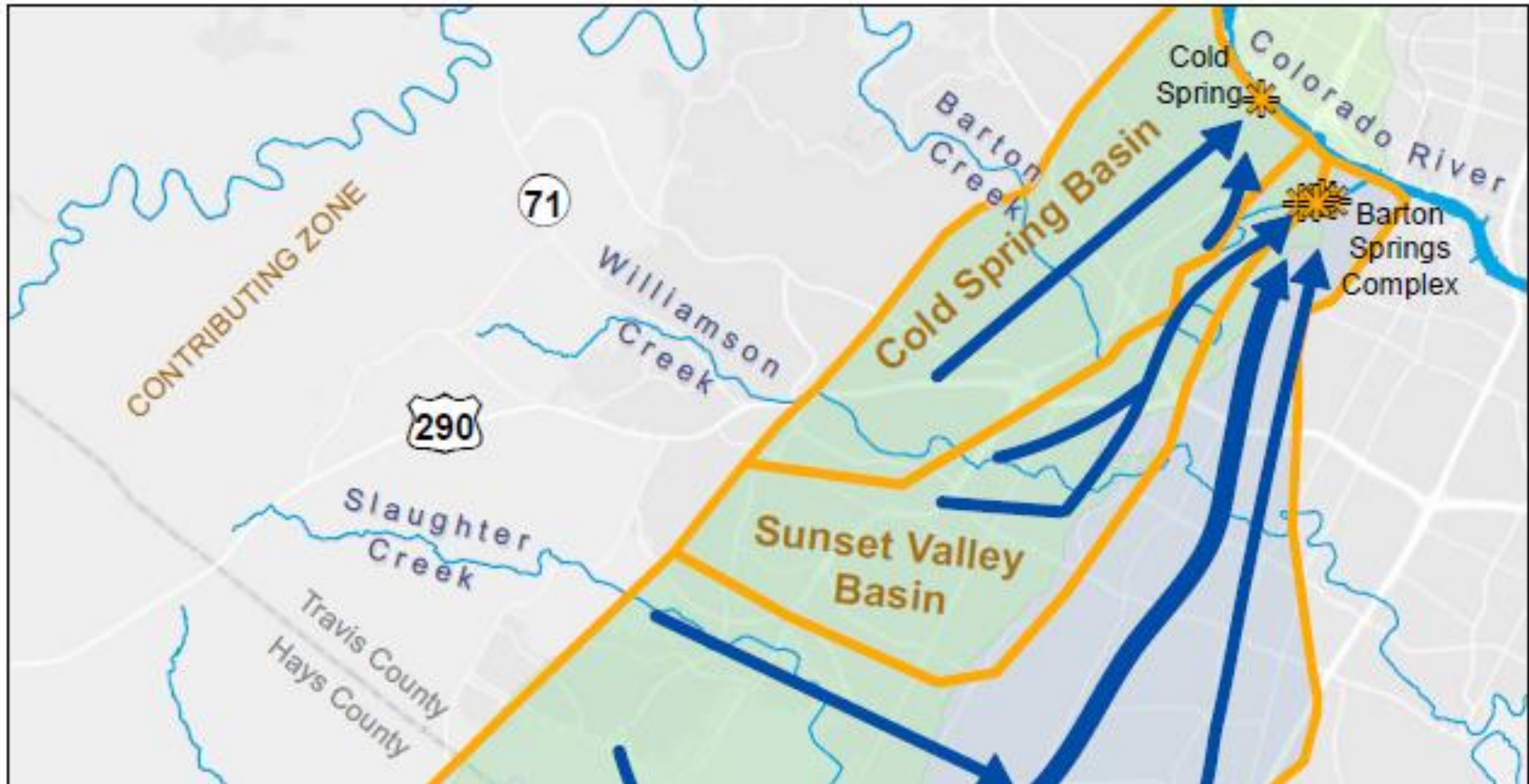
Barton Springs Turbidity and Specific Conductance



# What and When?



# Where Did The Sediment Come From?





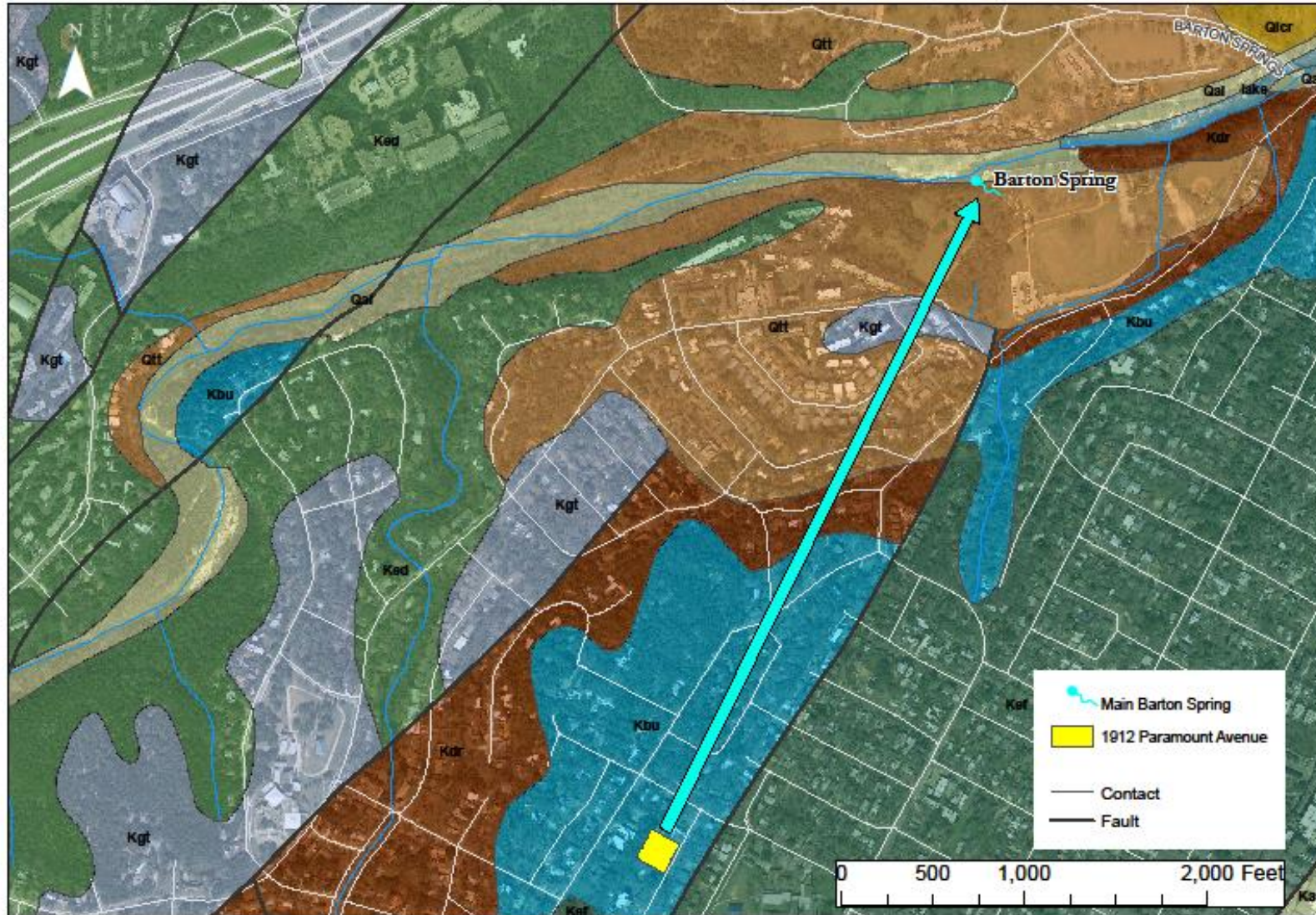
# Where Did The Sediment Come From?





# Where Did The Sediment Come From?

Barton Springs Turbidity Event: Approximate Flow Path

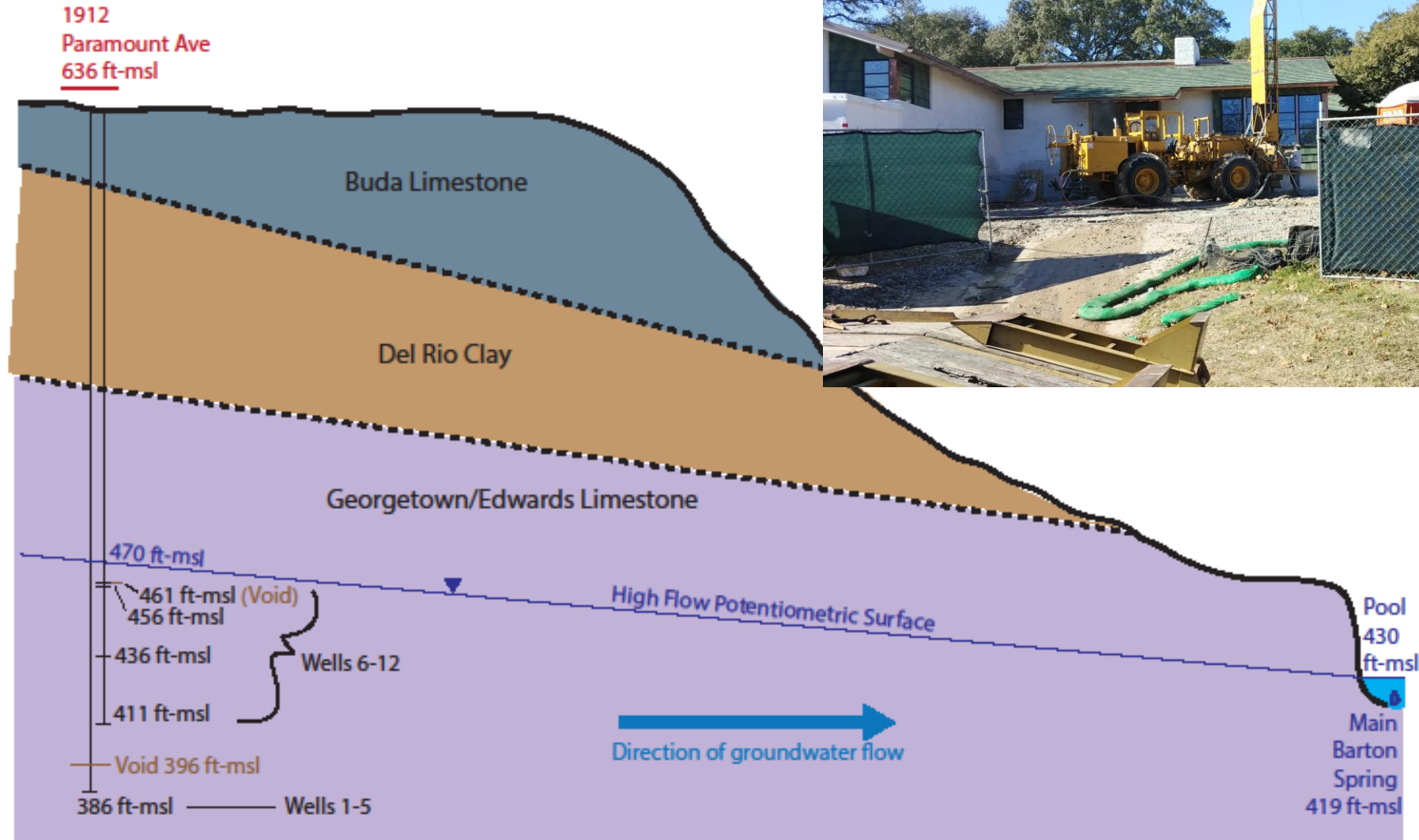


Approximate Travel Distance: 4,000 Feet



# How and Where Did It Happen?

## Geologic Cross Section from 1912 Paramount Avenue to Barton Springs





# What Next?

- Notification protocols
  - Barton Springs Edwards Aquifer Conservation District
  - Parks and Recreation
  - Development Services
- BSEACD Drilling protocols
  - Notification to COA
  - Well Depth Limitations
  - Void Notification to BSEACD
  - Drilling Oversight
- BSZ Spill Plan Updates
- Enforcement Action





QUESTIONS??

