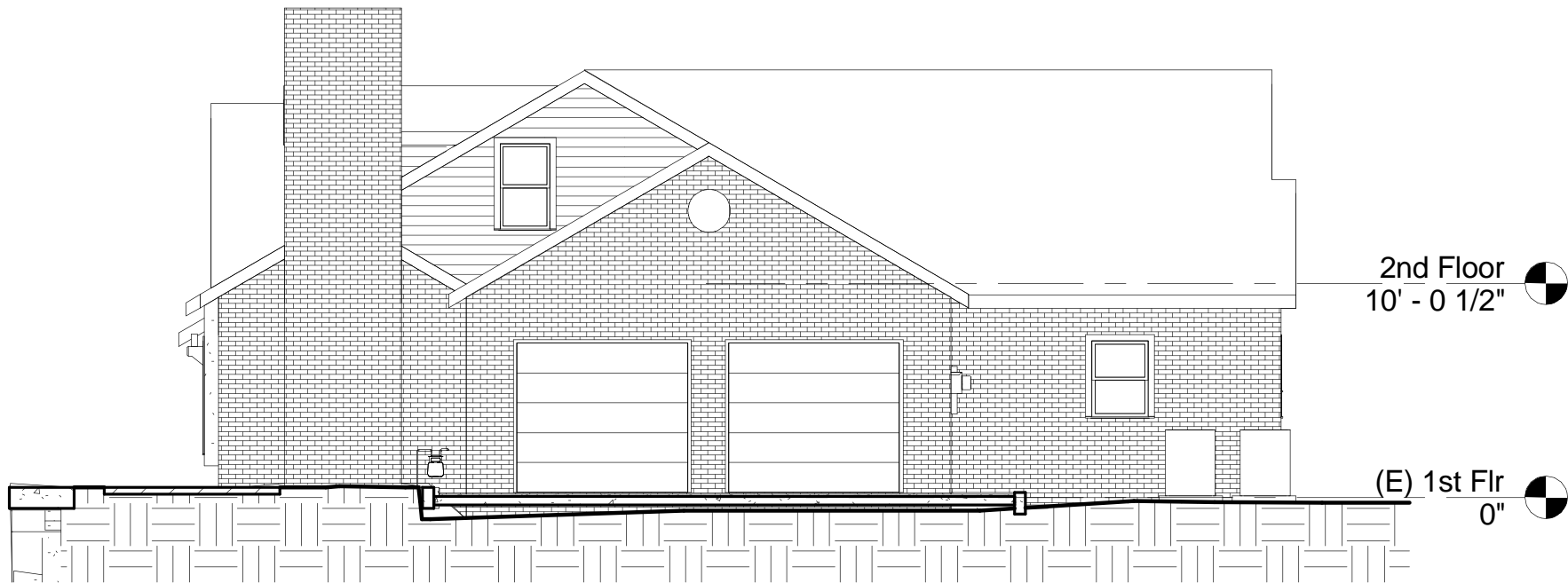


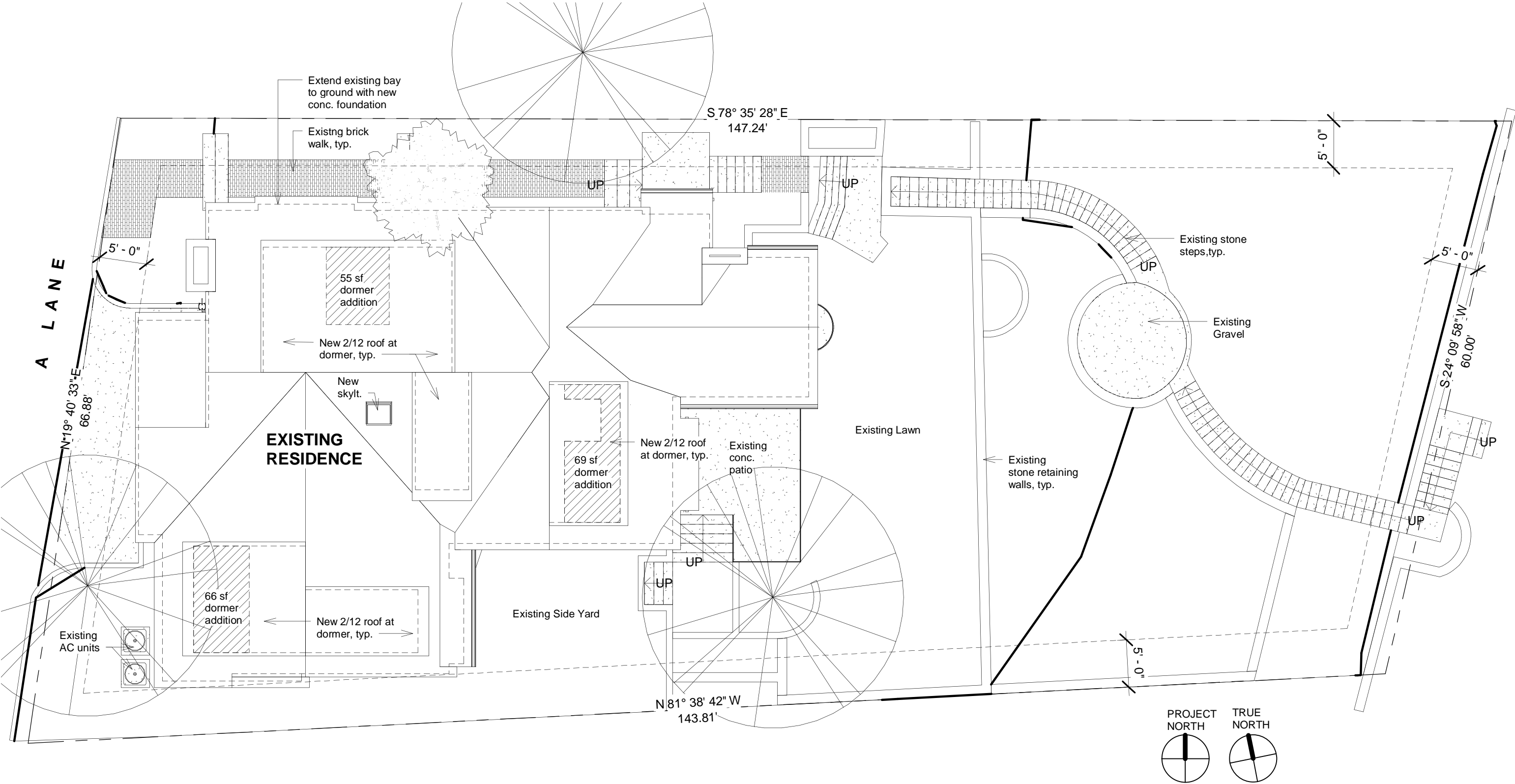




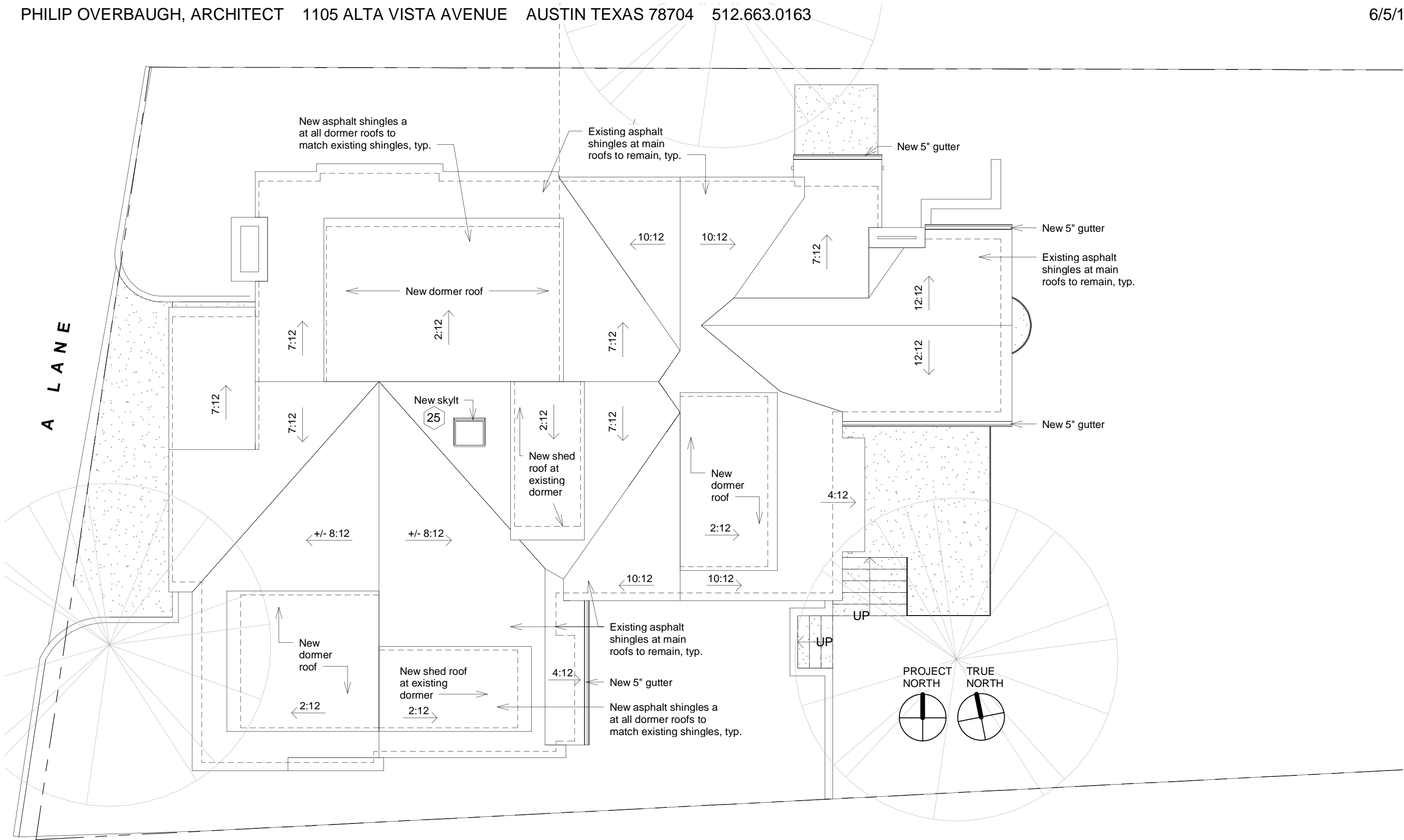
1 Existing South Elevation  
1/8" = 1'-0"



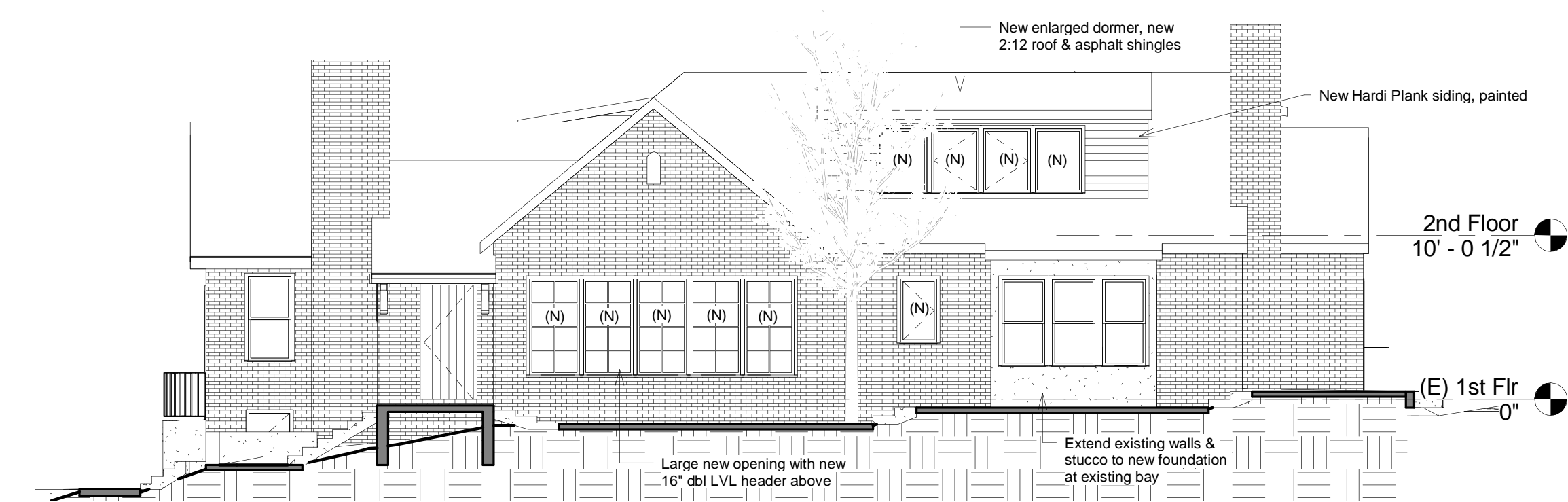
2 Existing West Elevation  
1/8" = 1'-0"



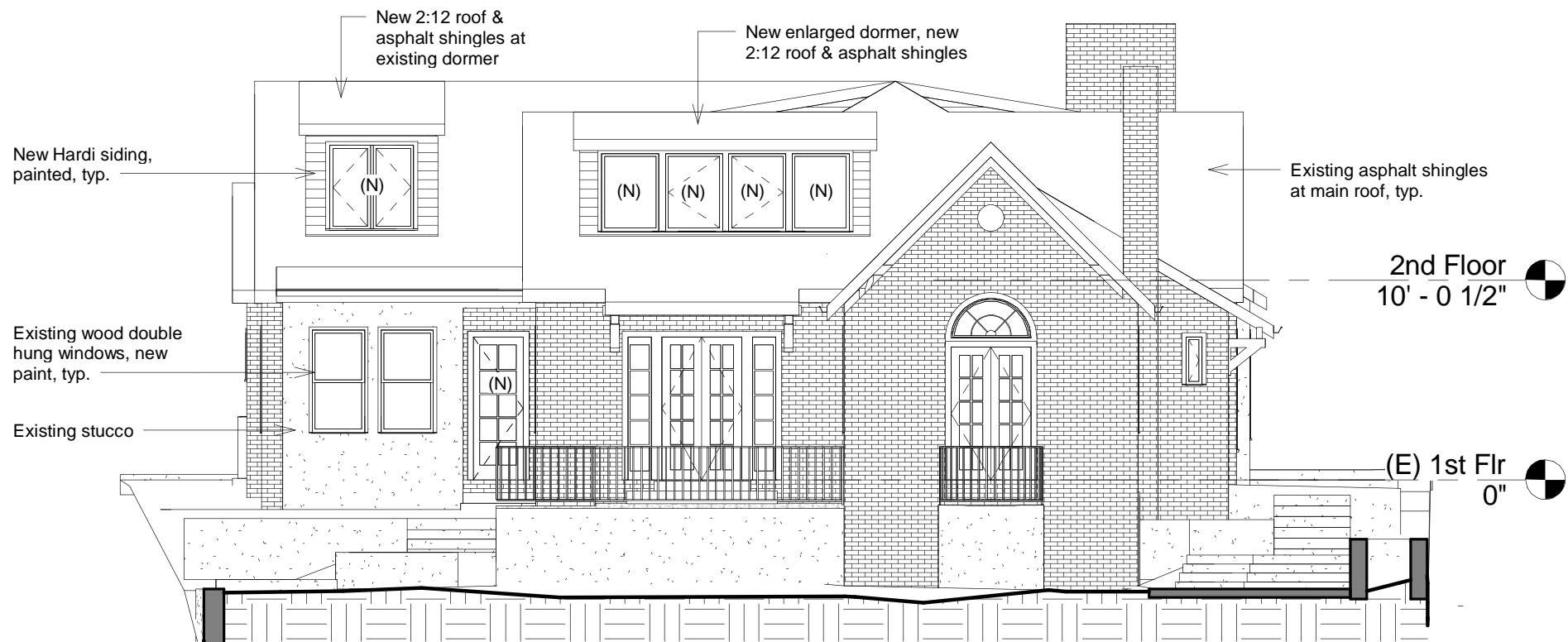
1 New Site Plan  
1" = 10'-0"



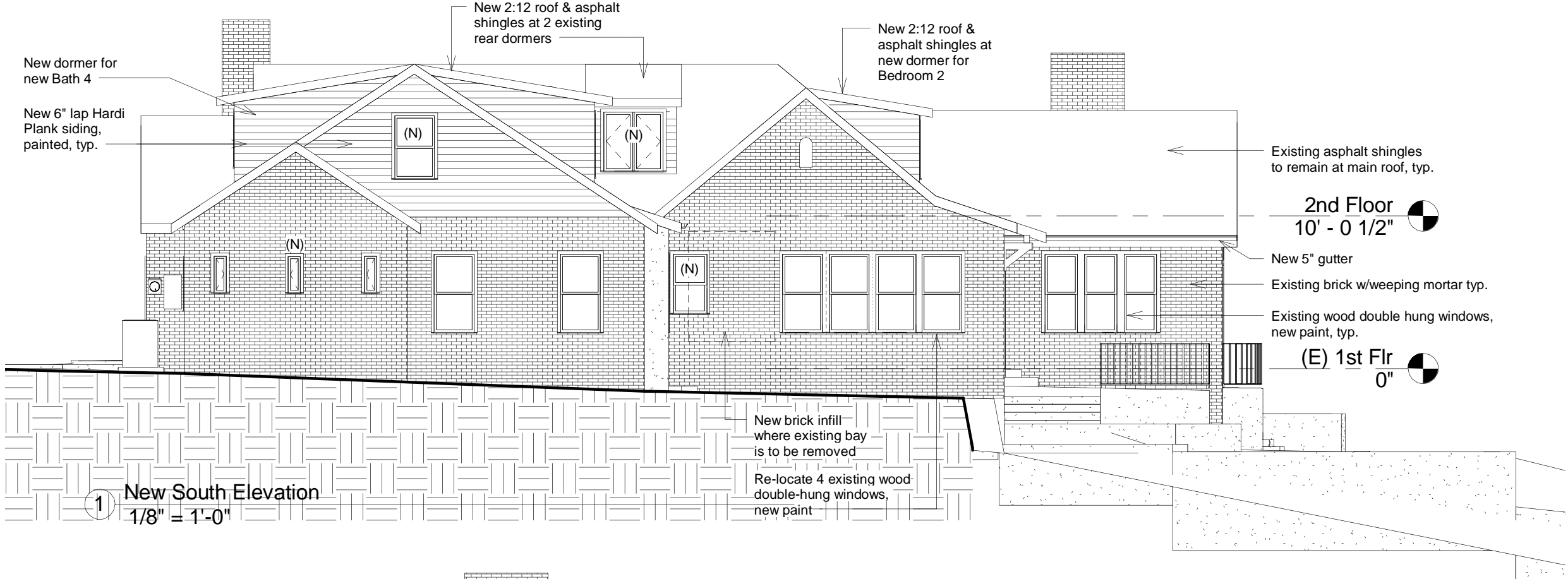
1 New Roof Plan  
1/8" = 1'-0"



1 New North Elevation  
1/8" = 1'-0"



2 New East Elevation  
1/8" = 1'-0"



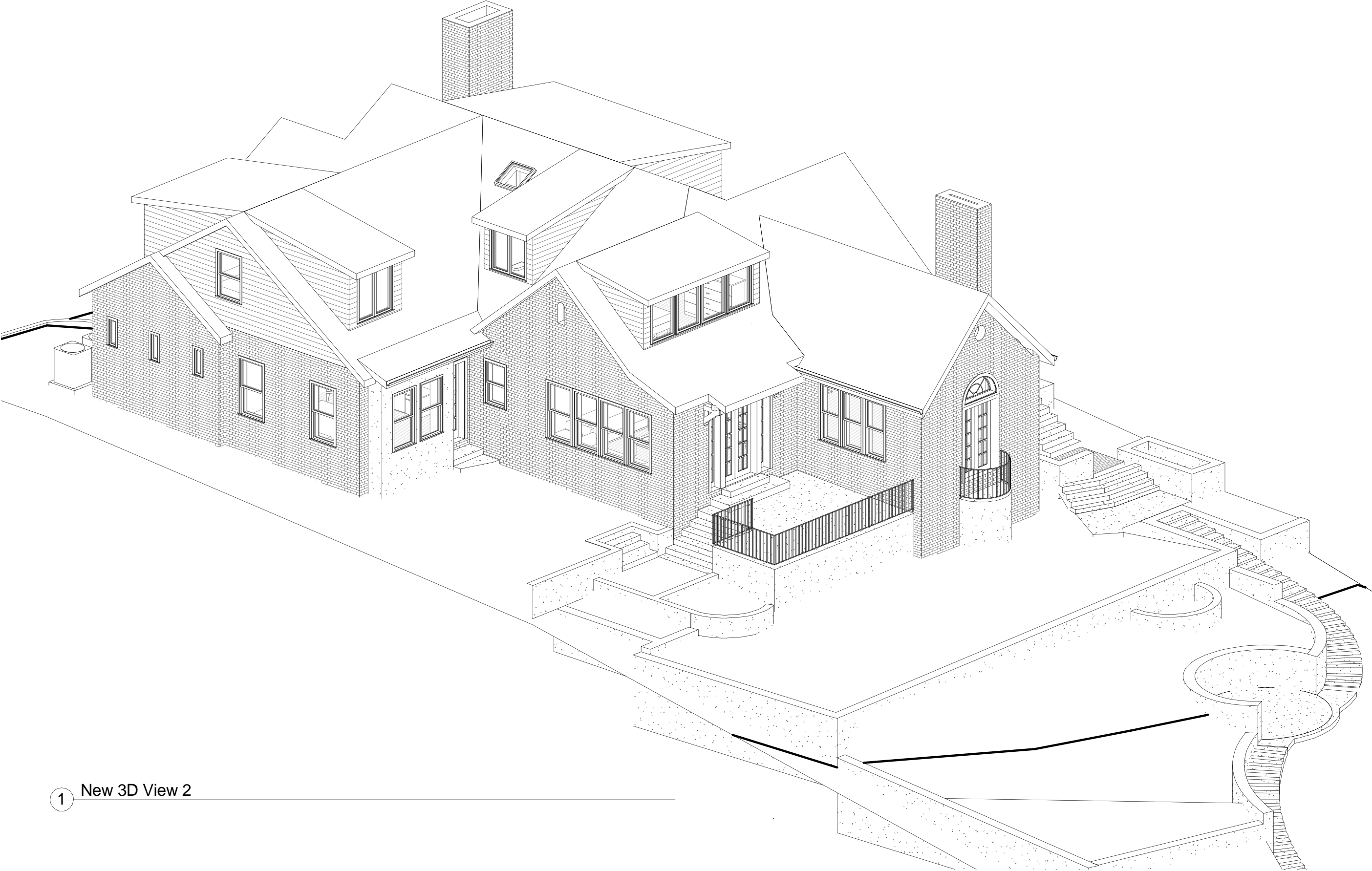
2 New West Elevation  
1/8" = 1'-0"





1 New 3D View 1





1 New 3D View 2



1 Perspective View