

1 SITE PLAN
1/16" = 1'-0"

1304 NEWNING AVENUE
(VARIABLE WIDTH R.O.W.)

NOT FOR REGULATORY
APPROVAL, PERMITTING,
OR CONSTRUCTION

NEWNING REMODEL

1304 NEWNING AVENUE
AUSTIN, TEXAS 78704

PAUL LAMB
ARCHITECTS

618 LAVACA STREET ROOM 1
AUSTIN, TEXAS 78701
PHONE 512 478-7316

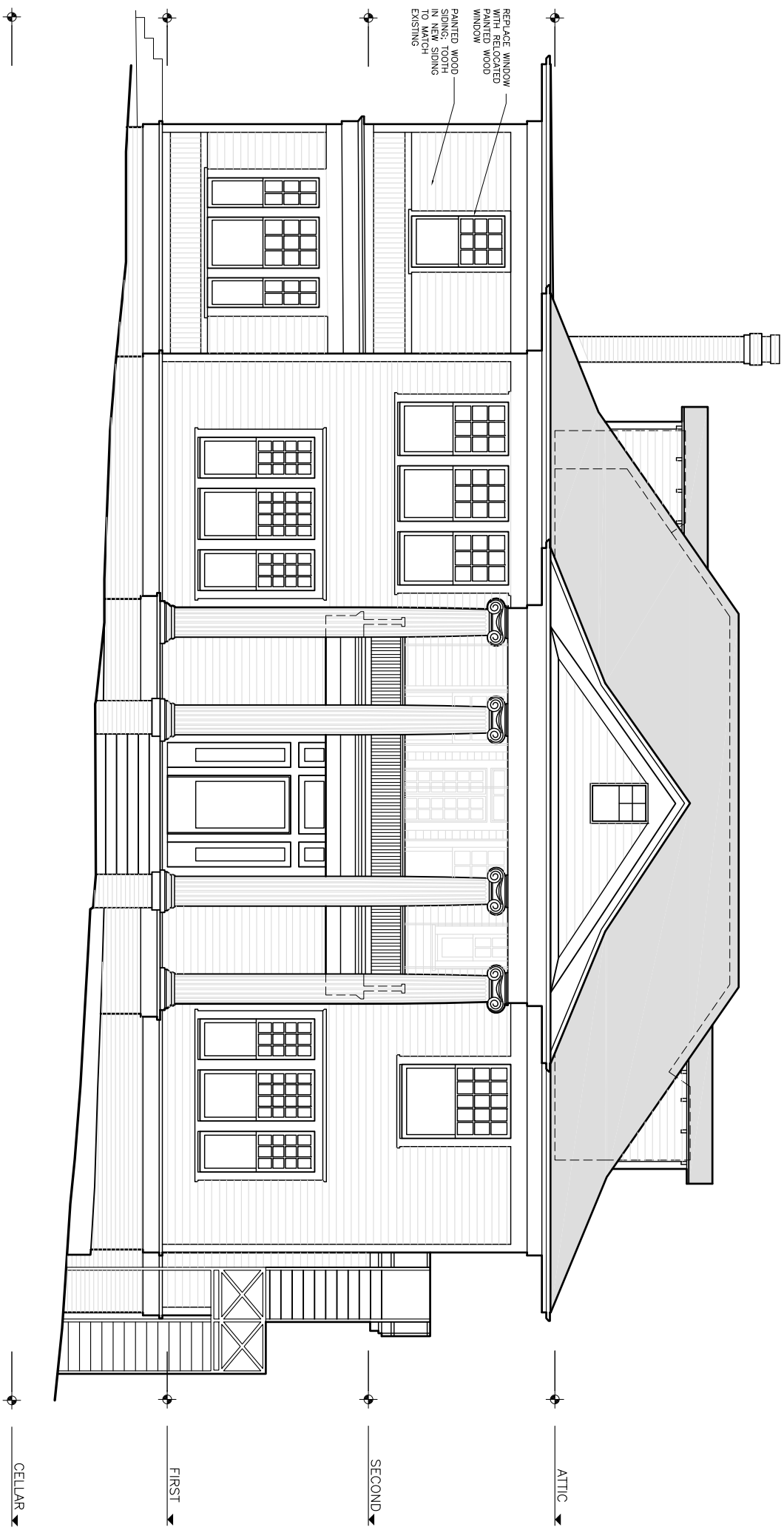
A100

SITE
PLAN

2019 AUG 06

HISTORIC
COMMISSION
REVIEW

1/16" = 1'-0"



1 FRONT ELEVATION
1/4"=1'-0"

NOT FOR REGULATORY
APPROVAL, PERMITTING,
OR CONSTRUCTION

NEWNING REMODEL

1304 NEWNING AVENUE
AUSTIN, TEXAS 78704

PAUL LAMB
ARCHITECTS

618 LAVACA STREET ROOM 1
AUSTIN, TEXAS 78701
PHONE 512 478-7316

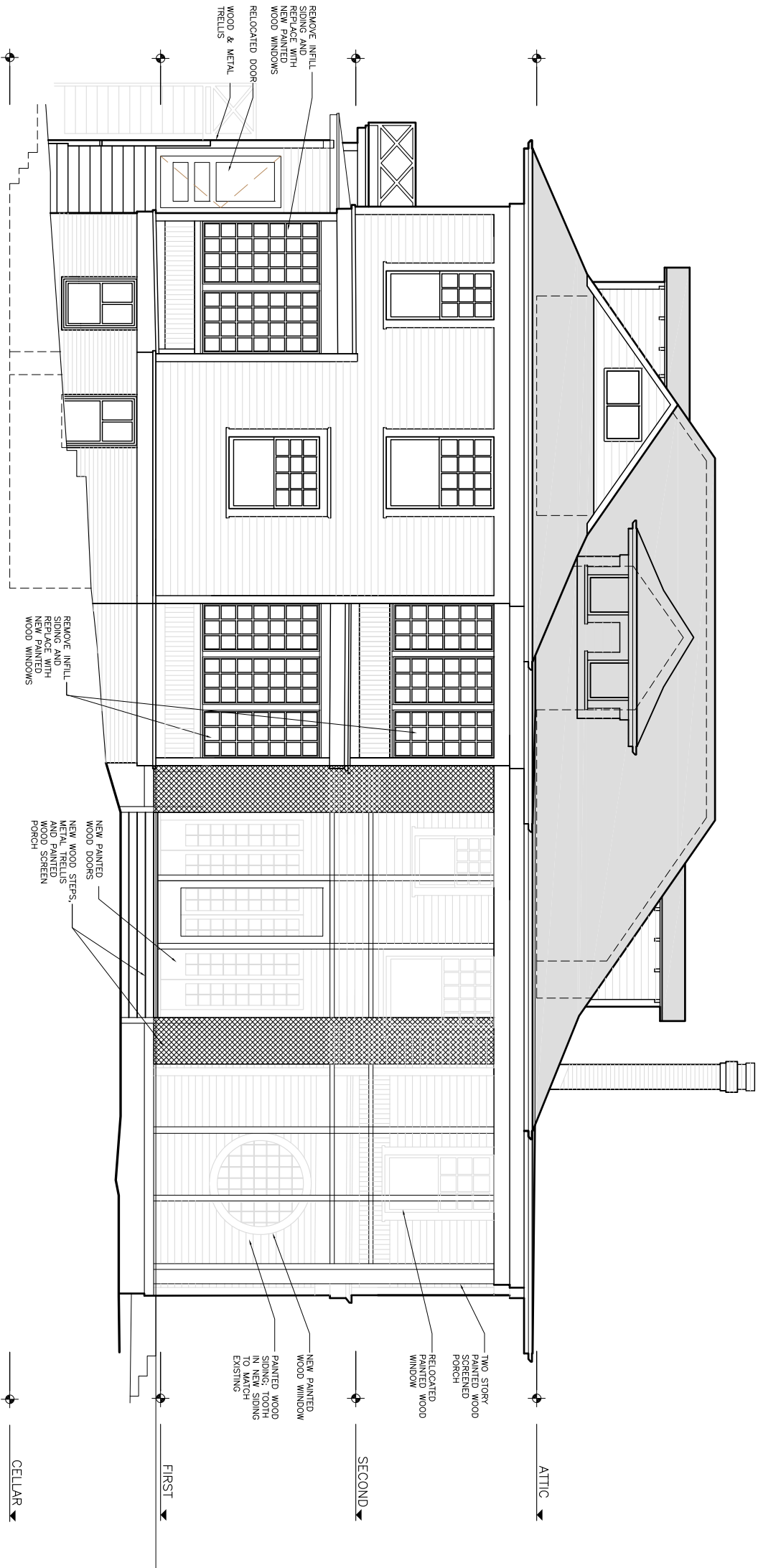
HISTORIC
COMMISSION
REVIEW

2019 AUG 06

SOUTH
ELEVATION

1/4"=1'-0"

A201



1 BACK ELEVATION
1/4"=1'-0"

NEWNING REMODEL

1304 NEWNING AVENUE
AUSTIN, TEXAS 78704

PAUL LAMB
ARCHITECTS

618 LAVACA STREET ROOM 1
AUSTIN, TEXAS 78701
PHONE 512 478-7316

NOT FOR REGULATORY
APPROVAL, PERMITTING,
OR CONSTRUCTION

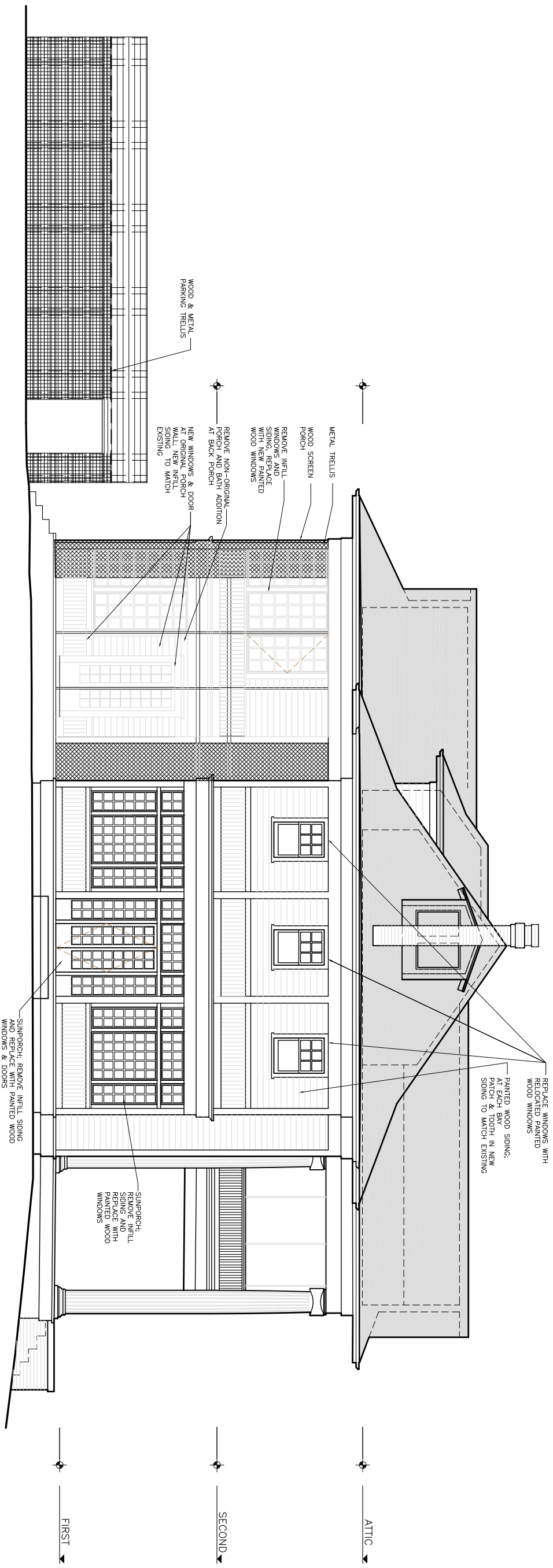
HISTORIC
COMMISSION
REVIEW

2019 AUG 06

BACK
ELEVATION

1/4"=1'-0"

A203



1 WEST ELEVATION
1/4"=1'-0"



CELLAR

FIRST

SECOND

ATTIC

NOT FOR REGULATORY
APPROVAL, PERMITTING,
OR CONSTRUCTION

NEWNING REMODEL

1304 NEWNING AVENUE
AUSTIN, TEXAS 78704

PAUL LAMB
ARCHITECTS

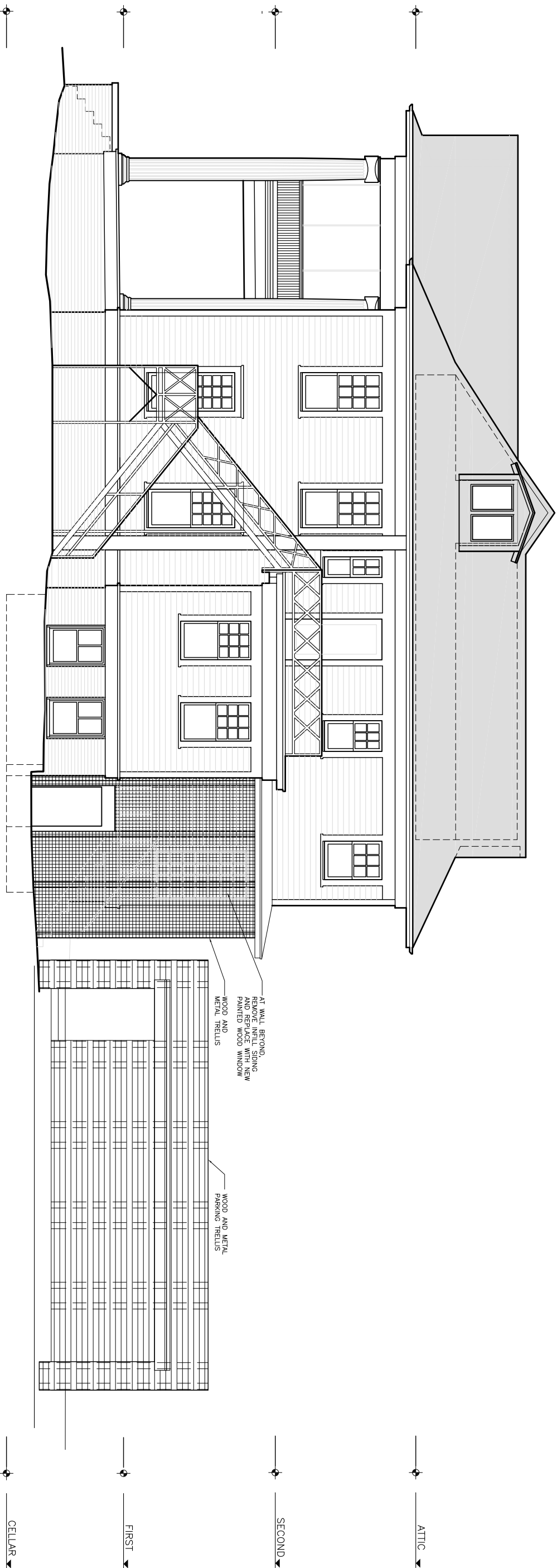
618 LAVACA STREET ROOM 1
AUSTIN, TEXAS 78701
PHONE 512 478-7316

HISTORIC
COMMISSION
REVIEW

2019 AUG 06
NORTH
ELEVATION

1/4"=1'-0"

A204



NOT FOR REGULATORY
APPROVAL, PERMITTING,
OR CONSTRUCTION

NEWNING REMODEL

1304 NEWNING AVENUE
AUSTIN, TEXAS 78704

PAUL LAMB
ARCHITECTS

618 LAVACA STREET ROOM 1
AUSTIN, TEXAS 78701
PHONE 512 478-7316

HISTORIC
COMMISSION
REVIEW

2019 AUG 06

EAST
ELEVATION

1/4"=1'-0"

1 EAST ELEVATION
1/4"=1'-0"

A202