

Asian American Resource Center

Master Plan Phase



Mission

The mission of the Asian American Resource Center is to provide spaces, services, resources, and programs through an Asian American Pacific Islander perspective.

Vision

The vision is to empower Austin’s diverse communities through cultural understanding and life-enhancing opportunities.

History

The existing 18,000 sf. building opened in Sept. 2013 after an initial master planning process that began in 2006.

Current Activities

Education Programs

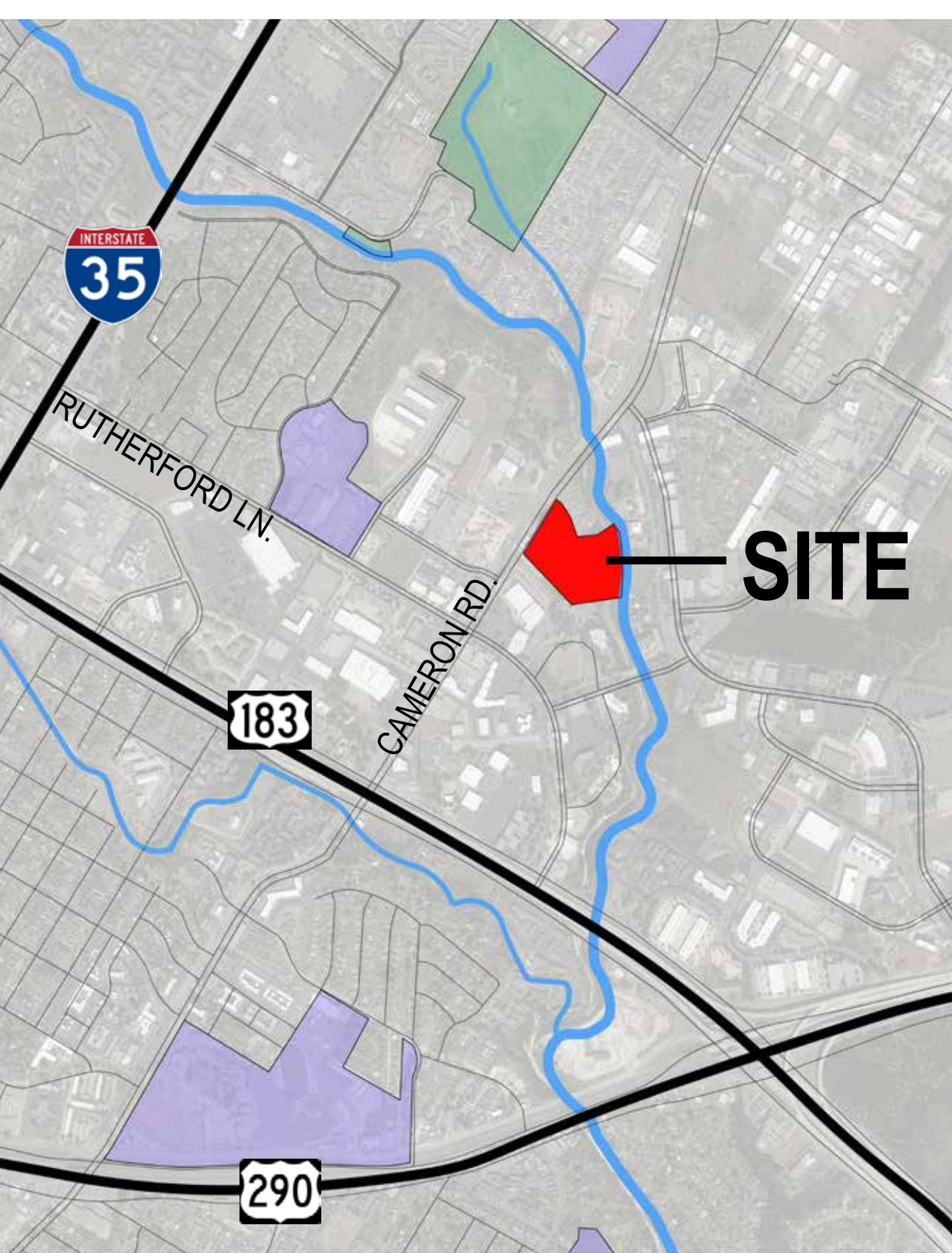
- Summer Camps
- Educational Events and Workshops
- School Tours
- Cultural Arts & Performance
- ESL/ Asian Language Classes
- Community Exhibit Program
- Art Workshops and Demonstrations
- Community Collaborations & Partnerships
- Computer Lab/ Library

Senior Programs

- Social Meal Program w/ Transportation
- Health and Wellness Classes
- Art Classes
- Table Tennis
- Gardening
- Game Room
- Computer Classes

Facility Rentals Programs

- Outdoor/ Indoor Events and Festivals
- Conferences and Workshops
- City and Corporate Meetings and Trainings
- Artist Access Program
- Free Community Rooms
- Co-Sponsorships



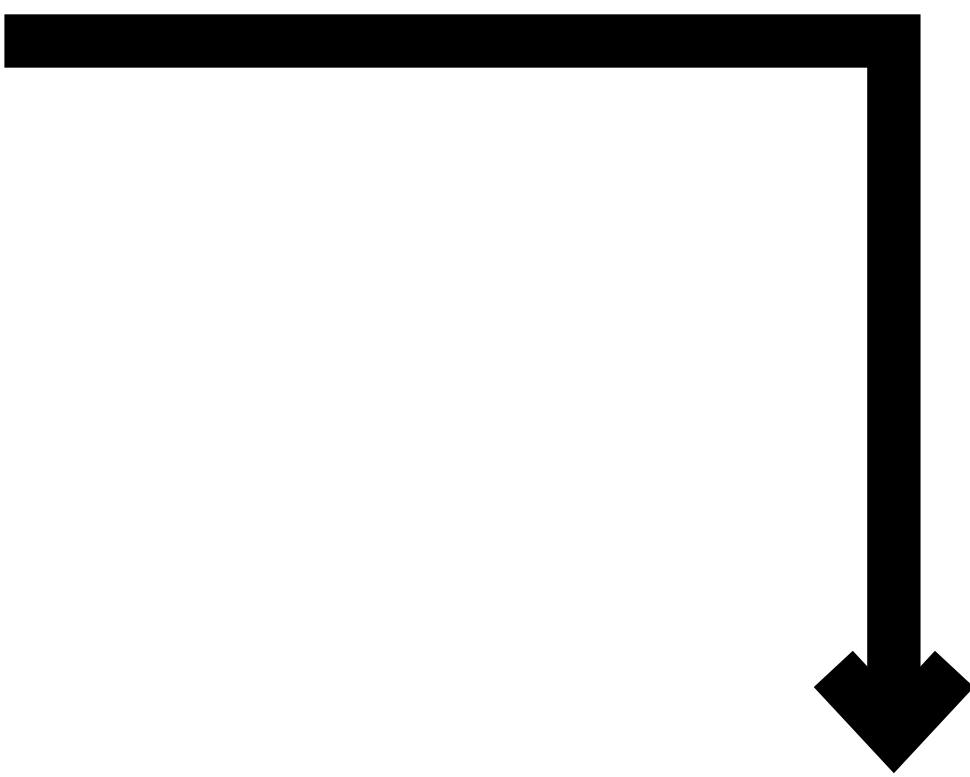
AARC LOCATION

Asian American Resource Center Masterplan Objective

- The Master Plan is a process set to understand how the site can be developed for the benefit of the Asian American Pacific Islander community.
- Through public input the Master Plan documents what community programs are needed and the space required to fulfill those programs.
- The Master plan also shows how future needs may be addressed.

What Has Been Done

| | |
|--------------------------------------|---------------------------------|
| Preliminary Feasibility Phase | – July 2018 to December 2018 |
| Community Engagement and Review | – September 2018 to May 2019 |
| Defining Values and Programming | – November 2018 to January 2019 |
| Confirming Values and Programming | – January 2019 |
| Vision Development and Presentations | – January 2019 to April 2019 |
| Master Plan Community Presentation | – May 1, 2019 |



Where We Are Now

| | |
|--|------------------|
| Land, Facilities and Programs Committee/ Parks Board | - August 2019 |
| Asian American Quality of Life Advisory Commission | - August 2019 |
| City Council | - September 2019 |



Next Steps

| | |
|---|------------------------------|
| Design Procurement to Design Phase 2 | – Fall 2019 to Summer 2020 |
| Design Process and Community Engagement | – Summer 2020 to Fall 2021 |
| Fundraising, Permitting and Bidding | – Winter 2021 to Summer 2023 |
| Construction of Phase 2 | – Fall 2023 to Spring 2025 |



Process and Input

- Completed two surveys, one by the City of Austin Parks and Recreation Department and the other by the Network of Asian American Organizations (NAAO).
- Facilitated four large master plan update meetings and ten small group discussions that included over 300 participants.
- Conducted outreach to over 200 organizations.

Master Plan Value Statements

Based off the community feedback received during the engagement process, the following master plan value statements were created:

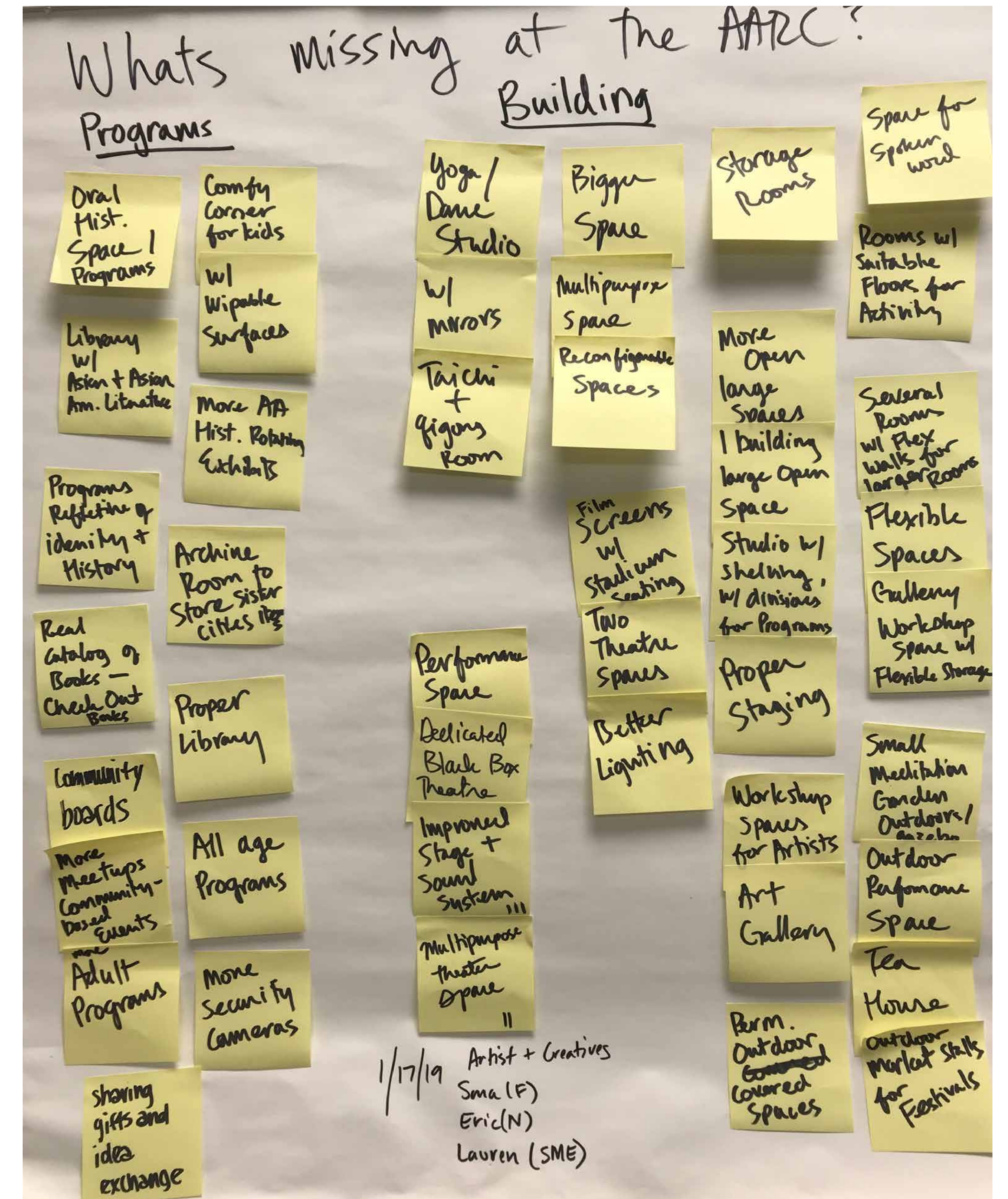
- Future plans should advance the mission and vision of the center as a cultural and life-enhancing space.
- To cultivate cross-cultural Asian American experiences.
- To create opportunities for intergenerational experiences both indoors and outdoors.
- The space should be flexible; capable of supporting a wide range of programming with a priority for cultural arts and active life activities.
- Design should reflect Asian American identities.
- New development must meet the present and future needs of staff (offices, storage, meeting space).
- Acknowledge and incorporate previous planning processes to the maximum extent possible.
- Use sustainable planning practices to take full advantage of current and future resources and funding.

Community Engagement



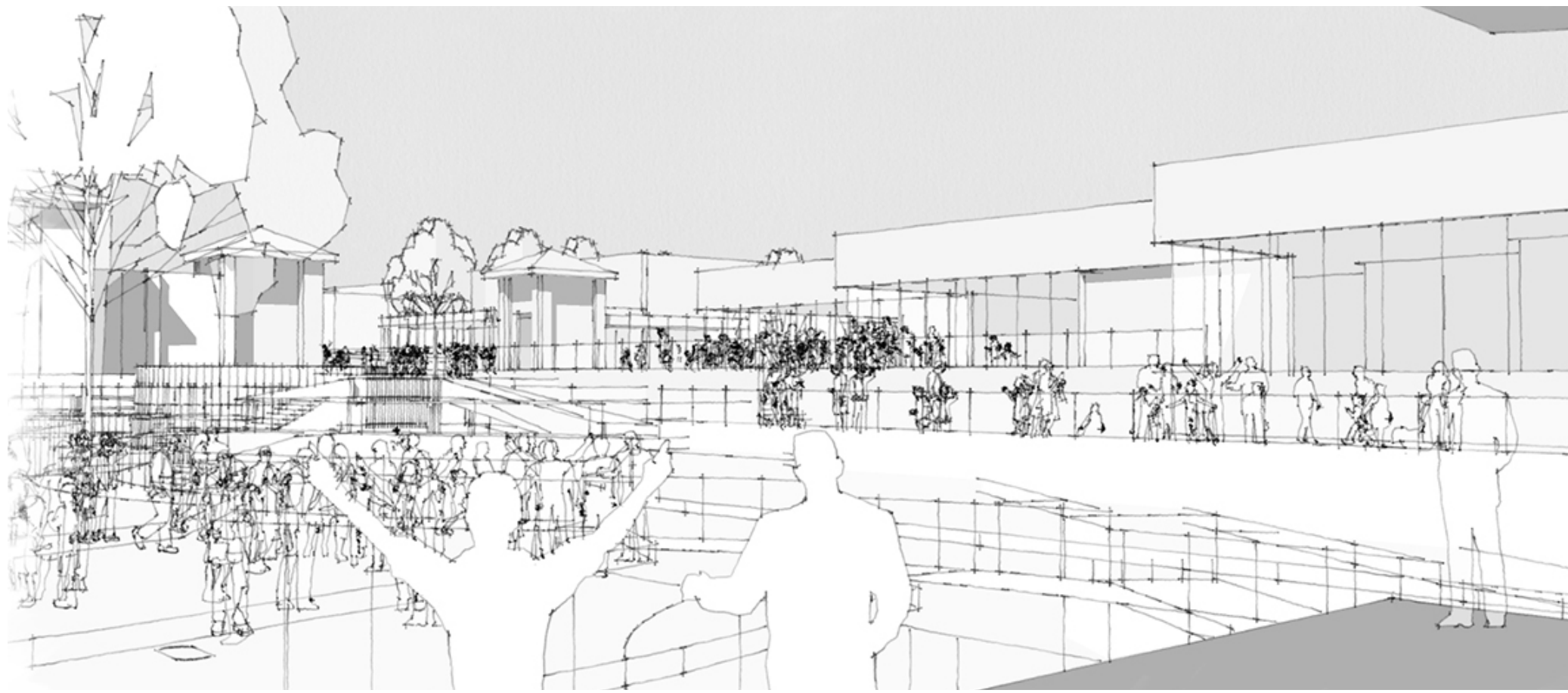
Demonstrated Needs Identified in the Community Engagement Process

- Additional Parking
- Performance Hall
- Gallery/Studio Spaces
- Flexible Event Space
- Classrooms
- Nature Trails
- Café/Vending Machine/Picnic Area
- Office/Meeting/Storage Space



For more in-depth details about the results of the AARC Master Plan Community Engagement Process, visit www.speakupaustin.org/aarcmp-update.

Identified Needs



Programming

Phase 1

- Existing Building (18,000 sf)
 - Ballroom (5,022 sf)
 - Library/ Computer Lab (422 sf)
 - Classroom 1-8 and Conference Room (2,677 sf)
 - Office space (1,095 sf)
 - Storage Space (516 sf)
 - Commercial Kitchen (approx 650 sf)

Phase 2

- Performing Arts Building (23,650 gsf) with Classrooms
- Pavilion/ Stage (1600 sf)
- Pedestrian Bridge
- Parking (222 spaces including existing parking)
- Plaza

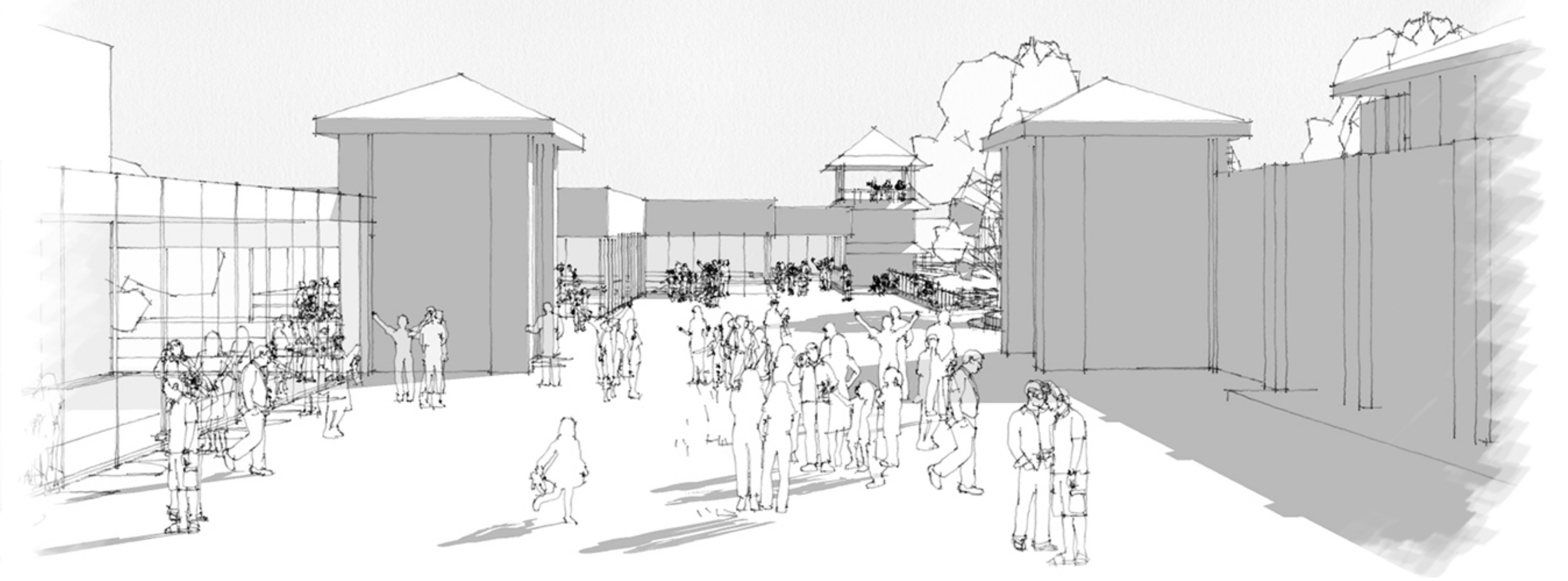
Future

- Additional Office Spaces
- Meeting Room
- Studio Spaces
- Natural Garden
- Tea House/ Meditation Room
- Vehicular Bridge
- Nature Play Area
- Sculpture Garden
- Playfield
- Additional Pavillion

- Existing Parking (91 spaces)
- Art in Public Places: Lotus Fountain Sculpture
- Great Lawn

- Event Court/ Asia Street/ Festival Space
- Event and Activity Lawn
- Picnic area

- Storm Water Quality Improvements
- Better Circulation
- Boardwalk/ Nature Trail
- Additional Picnic areas
- Community Garden
- Future Building
- Connection to Little Walnut Creek
- Potential Shared/ Structrual parking along the Rutherford site
- Potential appropriate Public Private partnership



View of Event Court from Main Entry

Legend

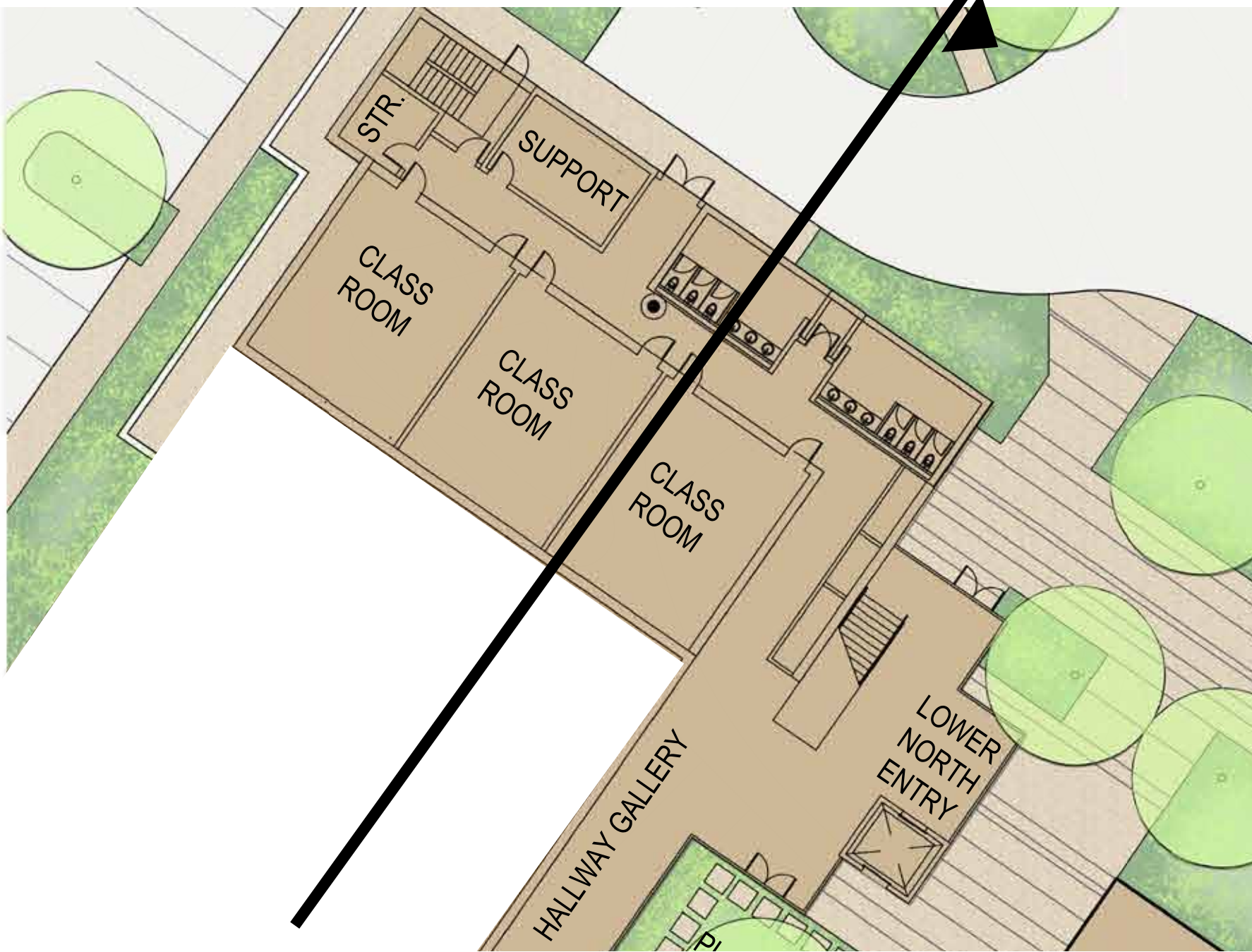
- | | |
|---|--------------------------------|
| 1. Existing Building | 6. Event & Activity Lawn |
| 2. Performing Arts & Classroom Building | 7. Exercise Equipment Area |
| 3. Pavilion | 8. Pedestrian Bridge |
| 4. Main Entry & Drop off | 9. Picnic Areas |
| 5. Event Court | 10. Existing Pond |
| | 11. Parking (222 Spaces total) |

Phase 2 Plan

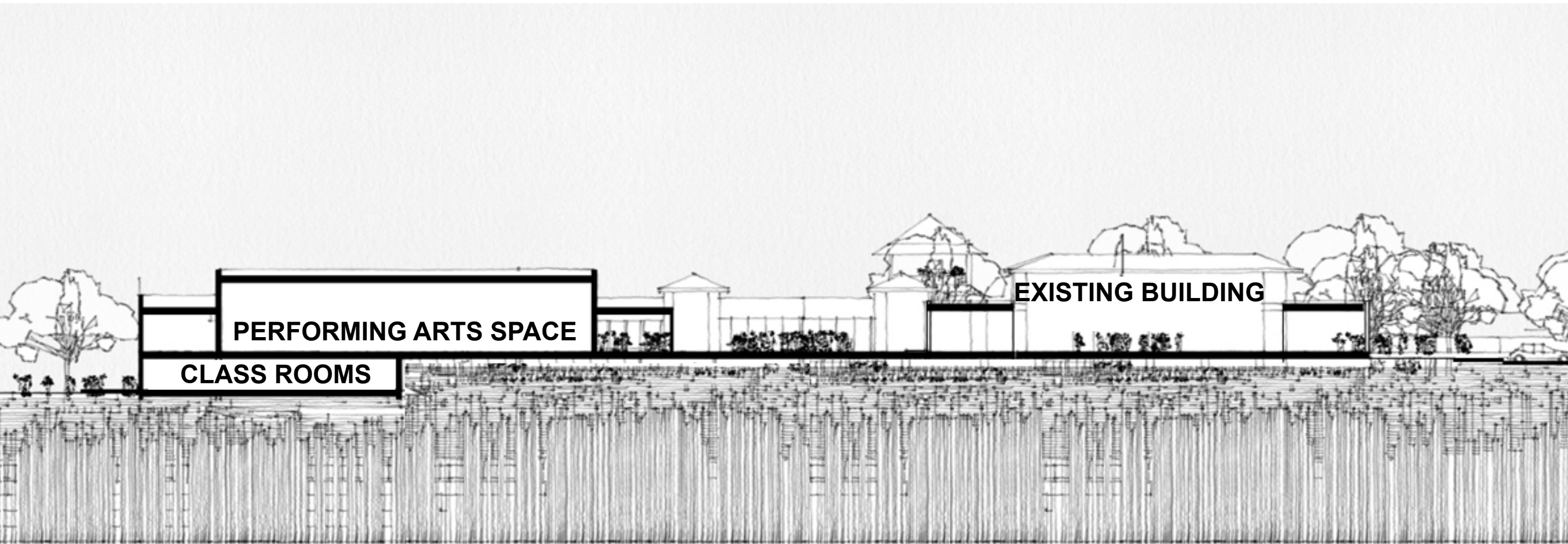




UPPER LEVEL



LOWER LEVEL

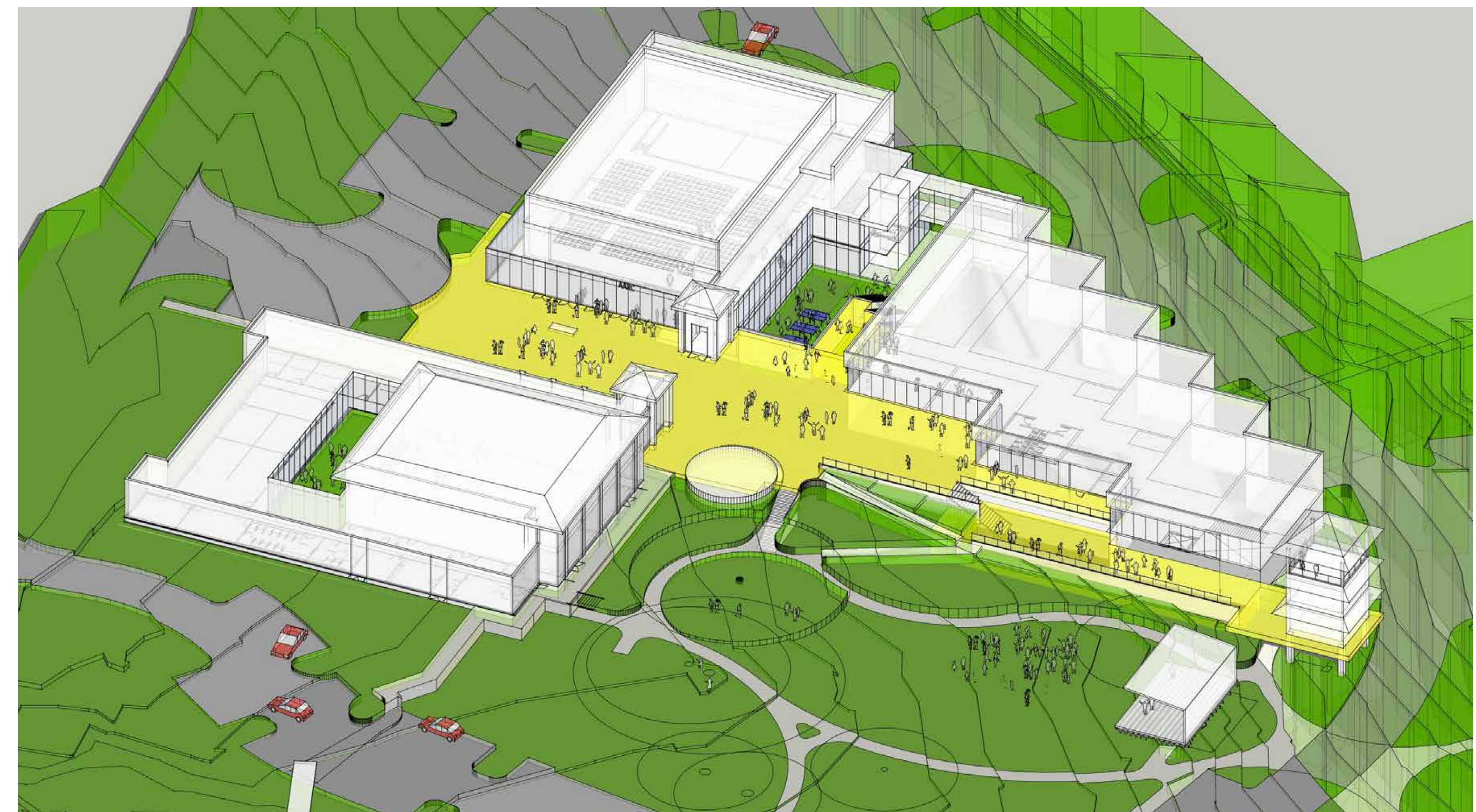


SECTION

PHASE 2 BUDGET

| | |
|--|---------------------|
| 2018 Bond allocation | \$7 million |
| Estimated additional community funding required to complete all of phase 2 in 2023 | \$8 - \$13 million |
| <hr/> | |
| Phase 2 Estimated Budget | \$15 - \$20 million |

Phase 2 Building



Legend

- | | |
|--|----------------------------------|
| 1. Existing Building | 13. Play Field |
| 2. Performing Arts & Gallery | 14. Community Garden |
| 3. 2 Story Building | 15. Pavilion |
| 4. Stage/ Pavilion | 16. Pedestrian Bridge |
| 5. Main Entry & Drop off | 17. Vehicular Bridge |
| 6. Event Court | 18. Natural Garden |
| 7. Formal Garden | 19. Future Building |
| 8. Event & Activity Lawn | 20. Little Walnut Creek Overlook |
| 9. Exercise Equipment Area | 21. Boardwalk |
| 10. Sculpture Garden | 22. Picnic Areas |
| 11. Nature Play Area | 23. Nature Trail |
| 12. Water Quality/ Detention Wet Pond | 24. Structured Viewpoint |
| | 25. Tea house/ Meditation room |

Overall Master Plan

Action Requested

Make a recommendation to the City Council to adopt the Asian American Resource Center Master Plan.

Thank You

Gregory Montes, CNU-A
Park Development Coordinator
512-974-9458
Gregory.Montes@austintexas.gov

Patrick Smith, PLA
RVI Planning + Landscape Architecture
512-480-0032
pmsmith@rviplanning.com