



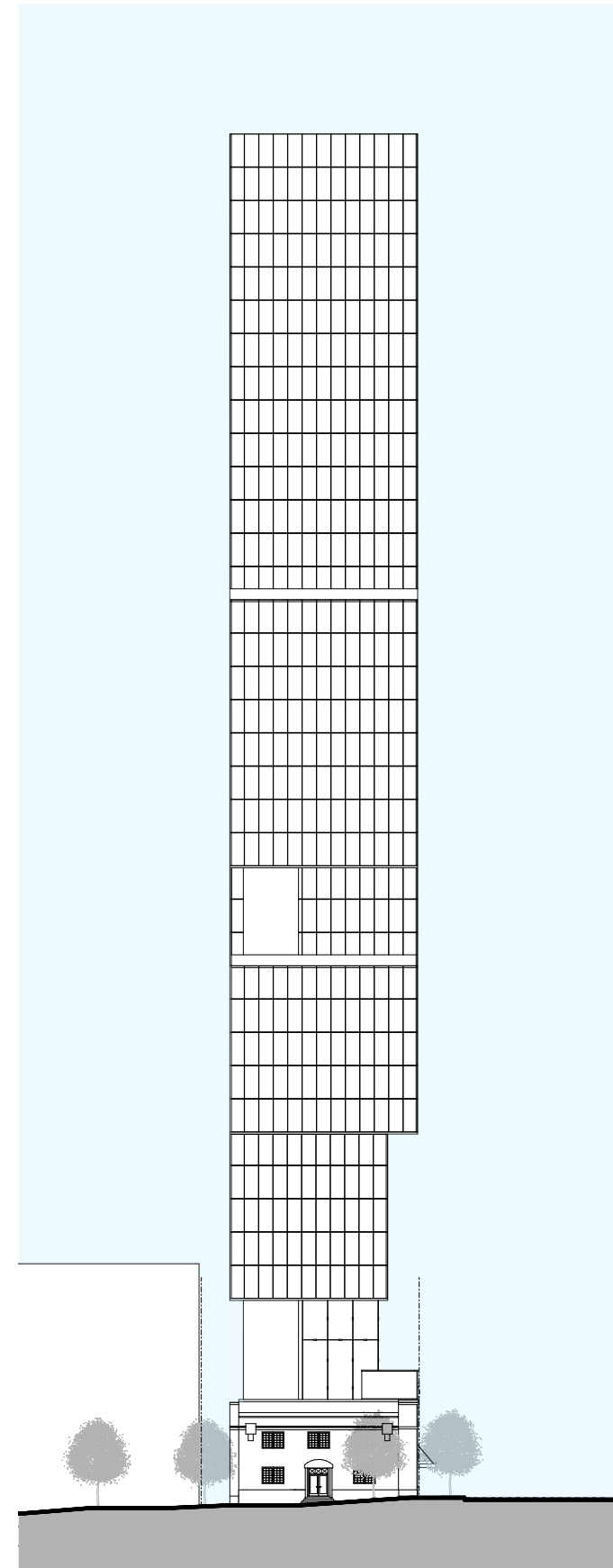
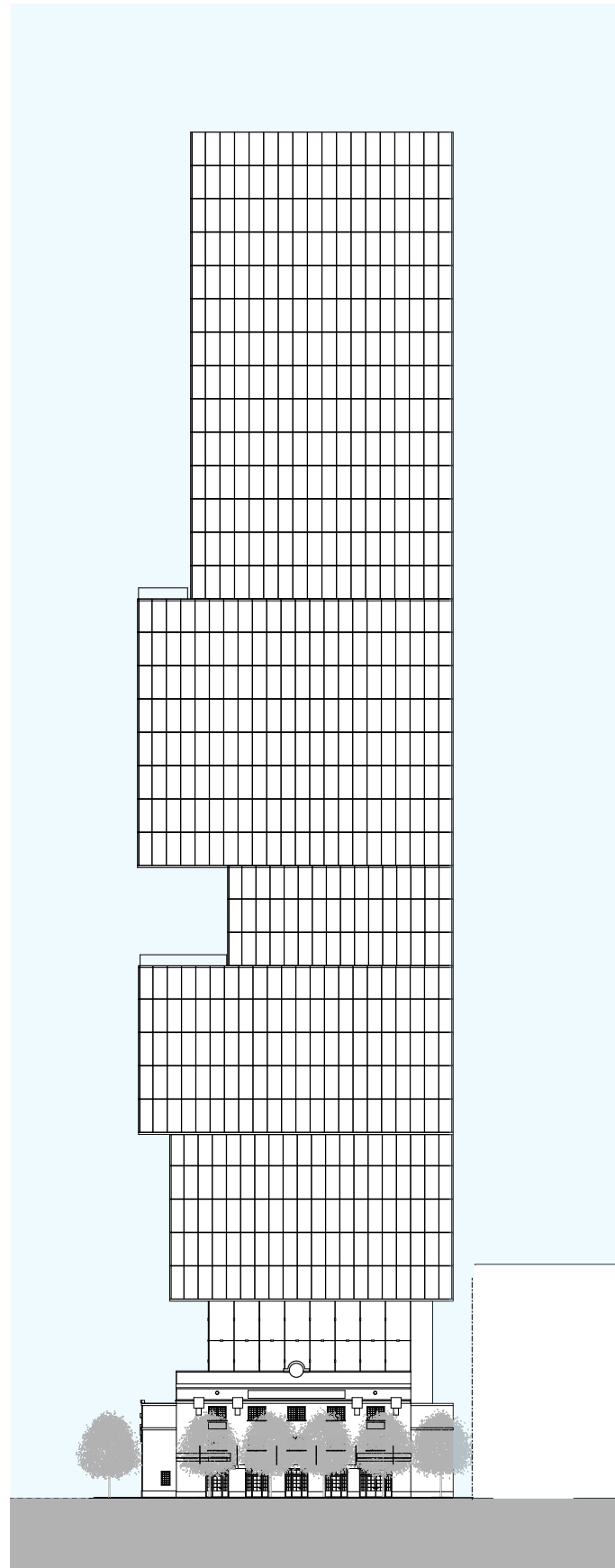
RHODE : PARTNERS

**CLAYTON
& LITTLE**

EDCI
ENGINEERS

**311 West 7th Street, Austin, Texas
EXPANSION & REHABILITATION PROPOSAL**

HLC REVIEW & DISCUSSION
August 26, 2019



**311 West 7th Street, Austin, Texas
EXPANSION & REHABILITATION PROPOSAL**

HLC REVIEW & DISCUSSION
August 26, 2019



NORTH ELEVATION - PROPOSED



NORTH ELEVATION - EXISTING

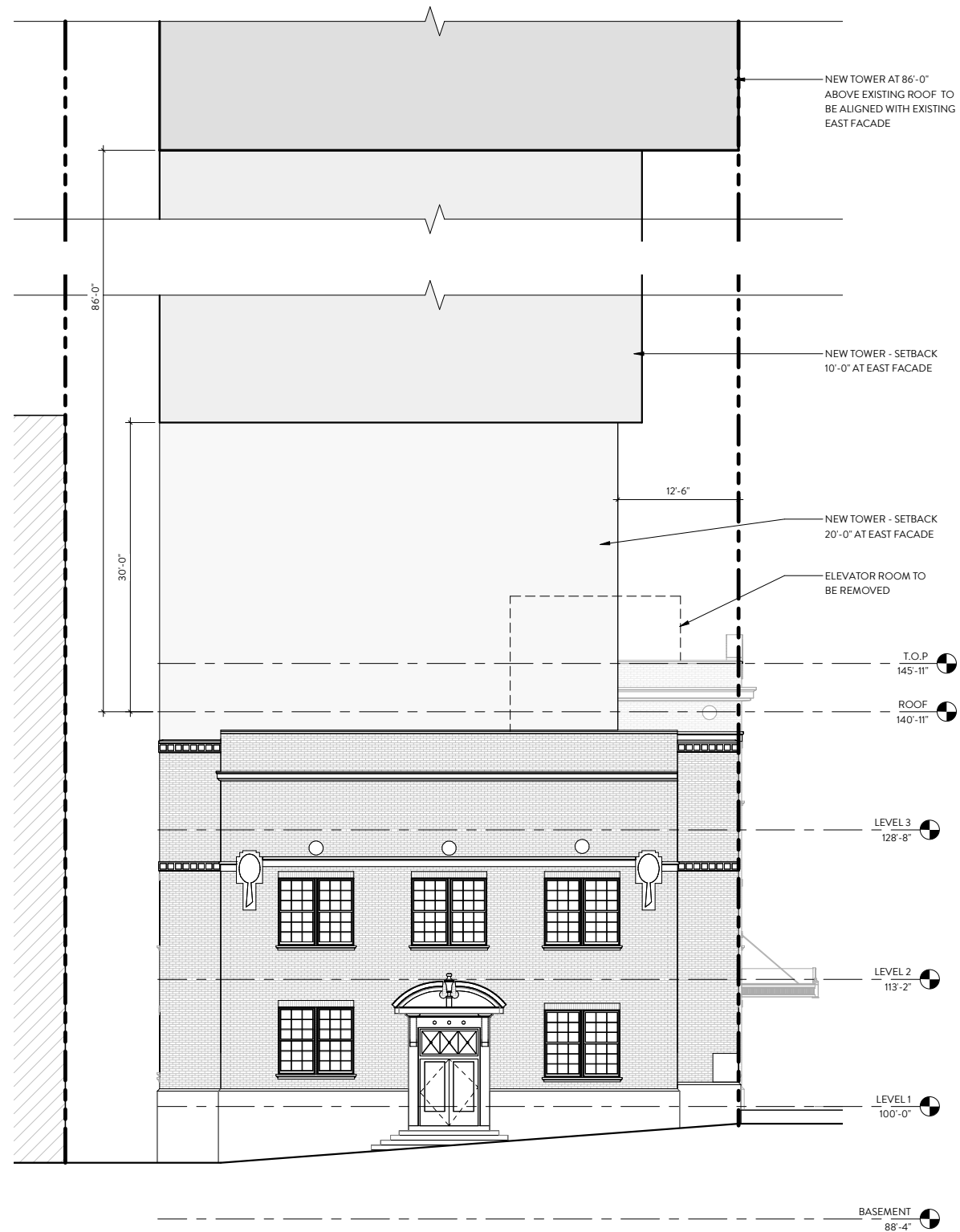


RHODE : PARTNERS

**CLAYTON
& LITTLE**

**311 West 7th Street, Austin, Texas
EXPANSION & REHABILITATION PROPOSAL**

HLC REVIEW & DISCUSSION
August 26, 2019



EAST ELEVATION - PROPOSED



EAST ELEVATION - EXISTING

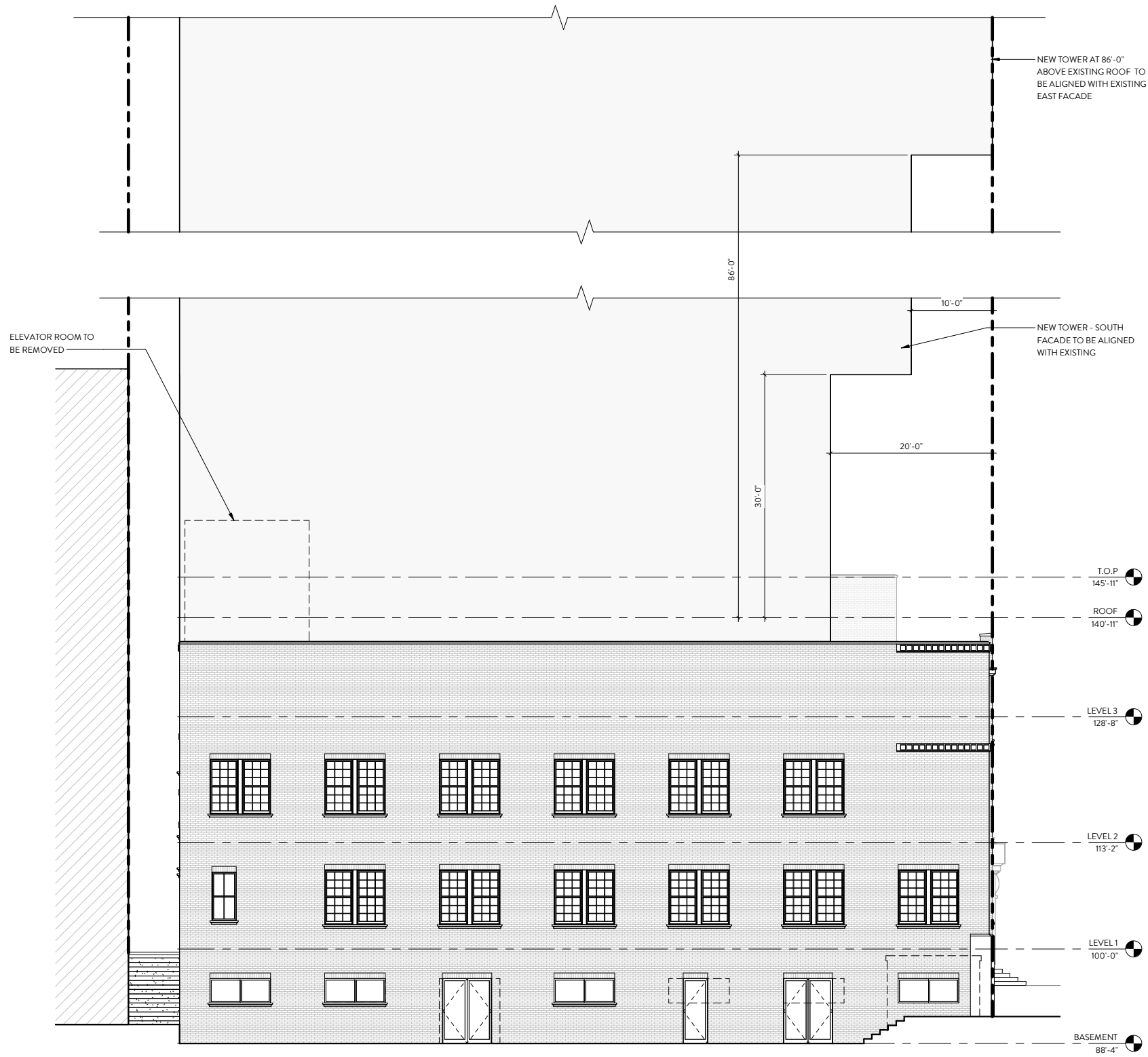


RHODE : PARTNERS

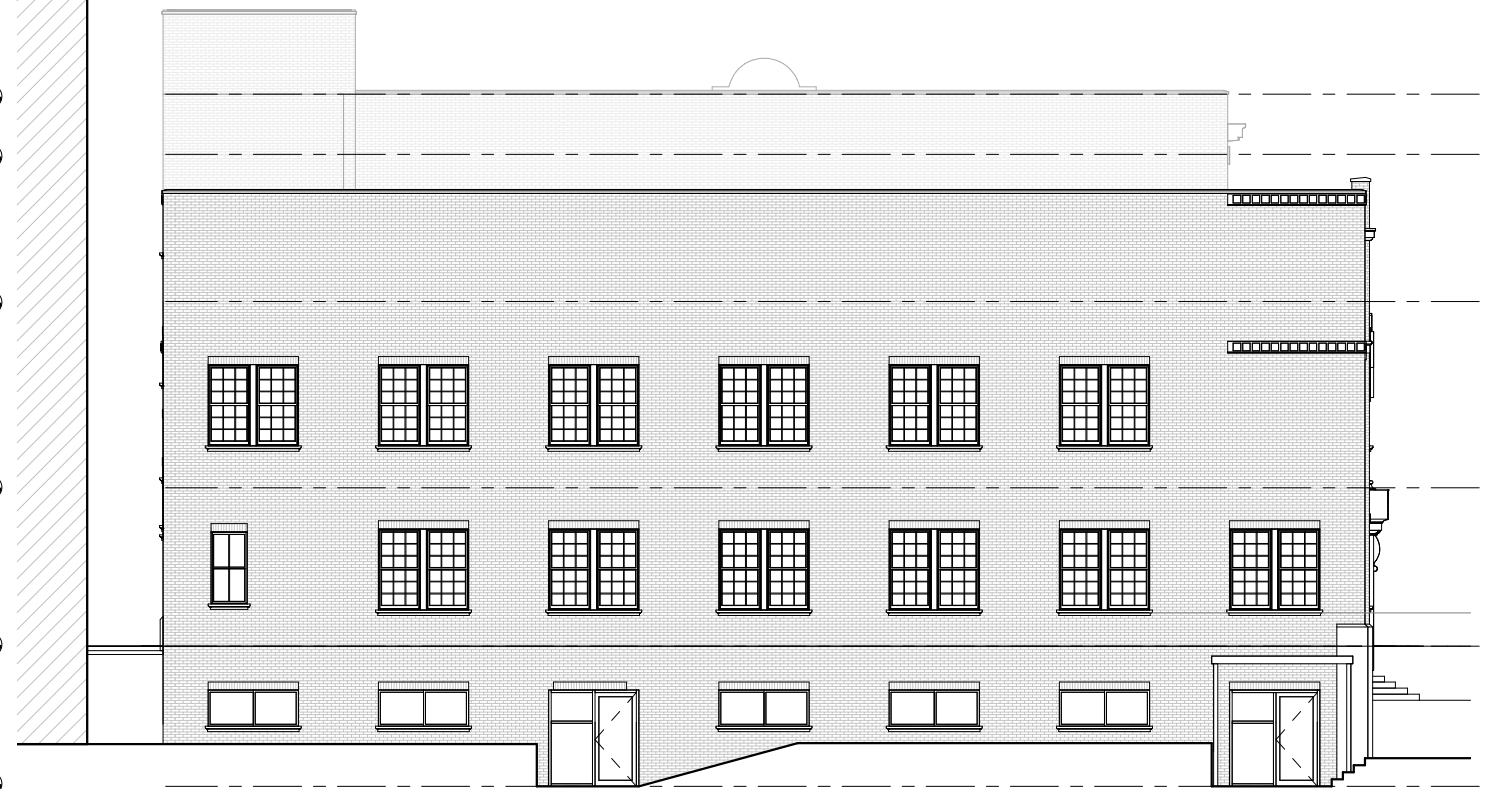
CLAYTON
& LITTLE

311 West 7th Street, Austin, Texas
EXPANSION & REHABILITATION PROPOSAL

HLC REVIEW & DISCUSSION
August 26, 2019



SOUTH ELEVATION - PROPOSED



SOUTH ELEVATION - EXISTING

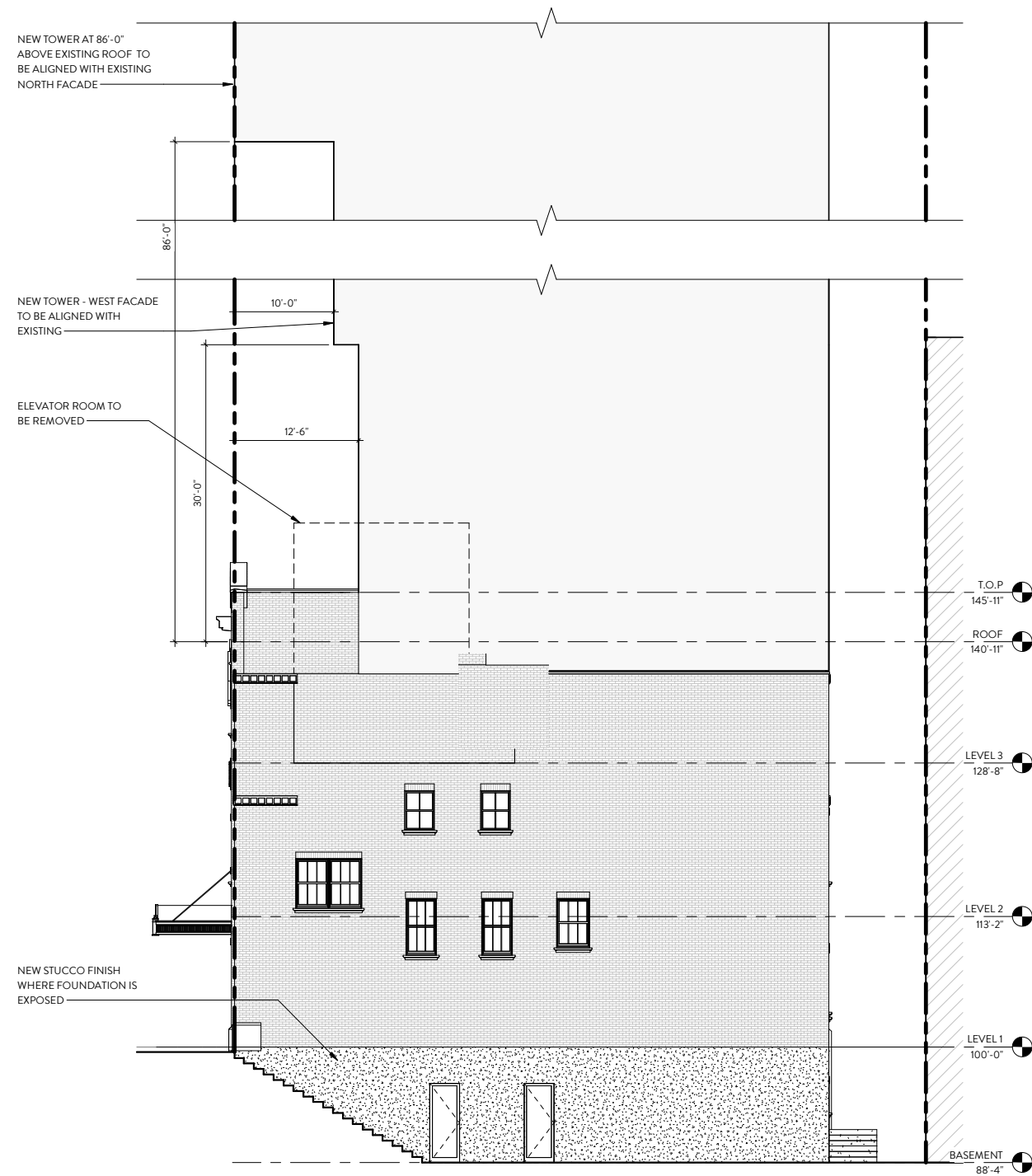


RHODE : PARTNERS

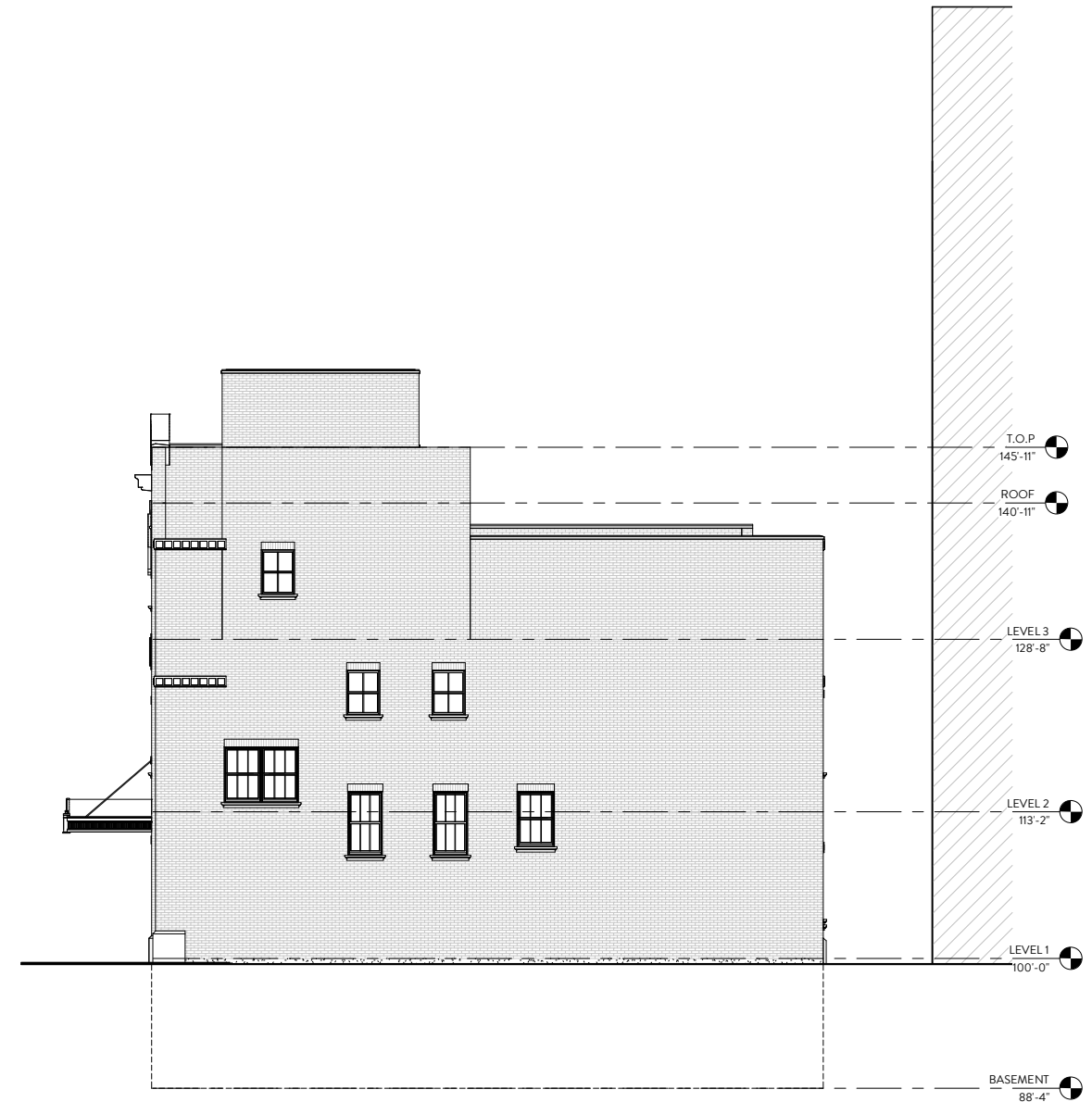
**CLAYTON
& LITTLE**

**311 West 7th Street, Austin, Texas
EXPANSION & REHABILITATION PROPOSAL**

HLC REVIEW & DISCUSSION
August 26, 2019



WEST ELEVATION - PROPOSED



WEST ELEVATION - EXISTING



RHODE : PARTNERS

CLAYTON
& LITTLE

311 West 7th Street, Austin, Texas
EXPANSION & REHABILITATION PROPOSAL

HLC REVIEW & DISCUSSION
August 26, 2019



**311 West 7th Street, Austin, Texas
EXPANSION & REHABILITATION PROPOSAL**

HLC REVIEW & DISCUSSION
August 26, 2019



RHODE : PARTNERS

**CLAYTON
& LITTLE**

EDCI
ENGINEERS

**311 West 7th Street, Austin, Texas
EXPANSION & REHABILITATION PROPOSAL**

HLC REVIEW & DISCUSSION
August 26, 2019



RHODE : PARTNERS

**CLAYTON
& LITTLE**

EDCI
ENGINEERS

**311 West 7th Street, Austin, Texas
EXPANSION & REHABILITATION PROPOSAL**

HLC REVIEW & DISCUSSION
August 26, 2019



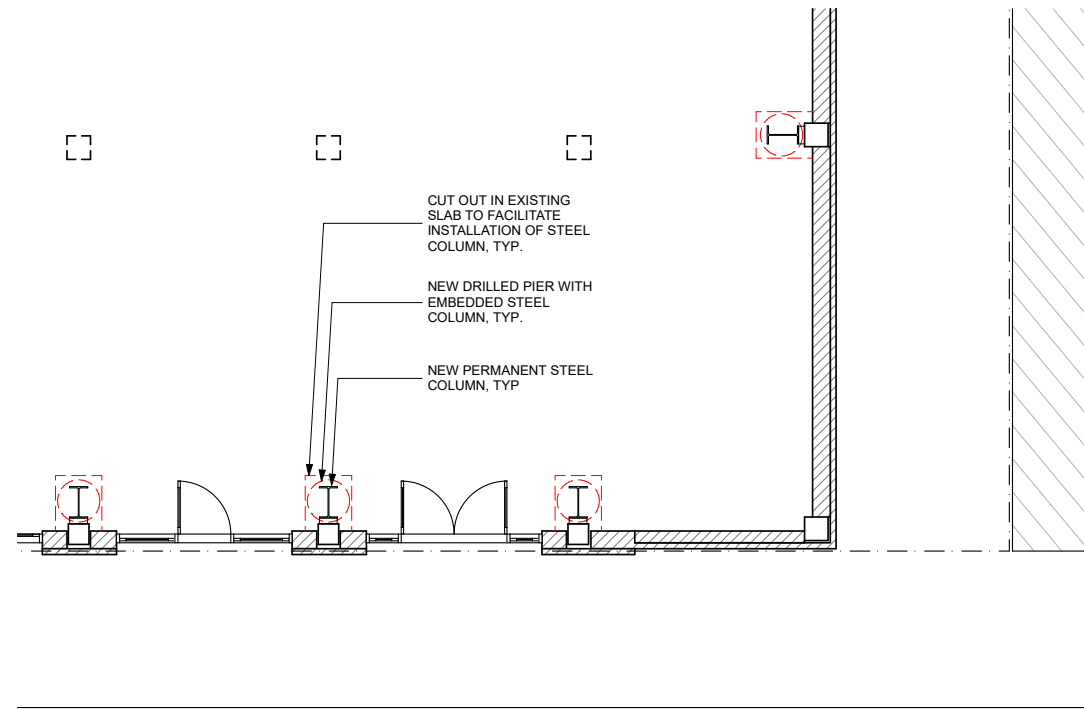
RHODE : PARTNERS

**CLAYTON
& LITTLE**

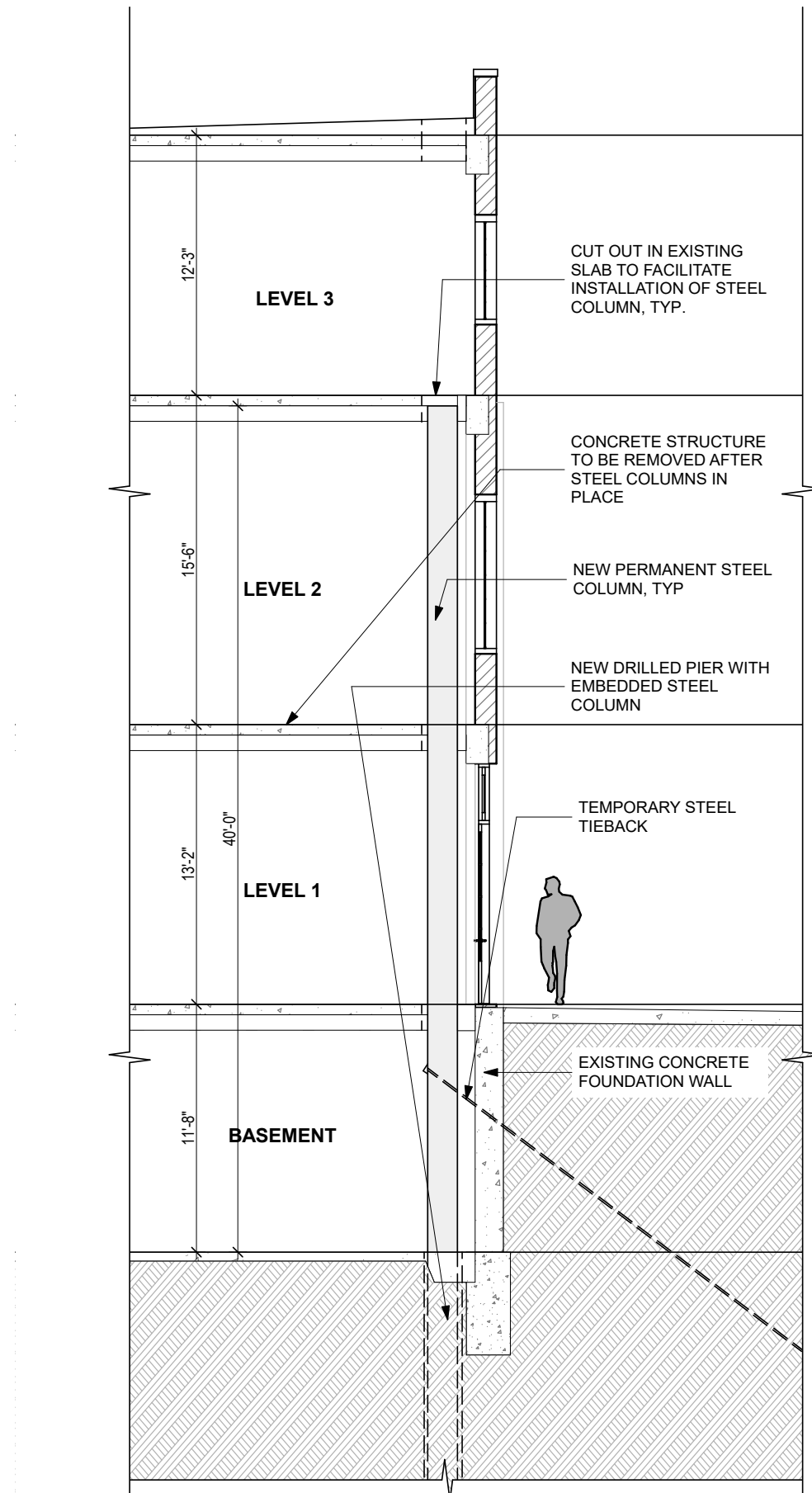
EDCI
ENGINEERS

**311 West 7th Street, Austin, Texas
EXPANSION & REHABILITATION PROPOSAL**

HLC REVIEW & DISCUSSION
August 26, 2019



PARTIAL FLOOR PLAN



311 West 7th Street, Austin, Texas
EXPANSION & REHABILITATION PROPOSAL

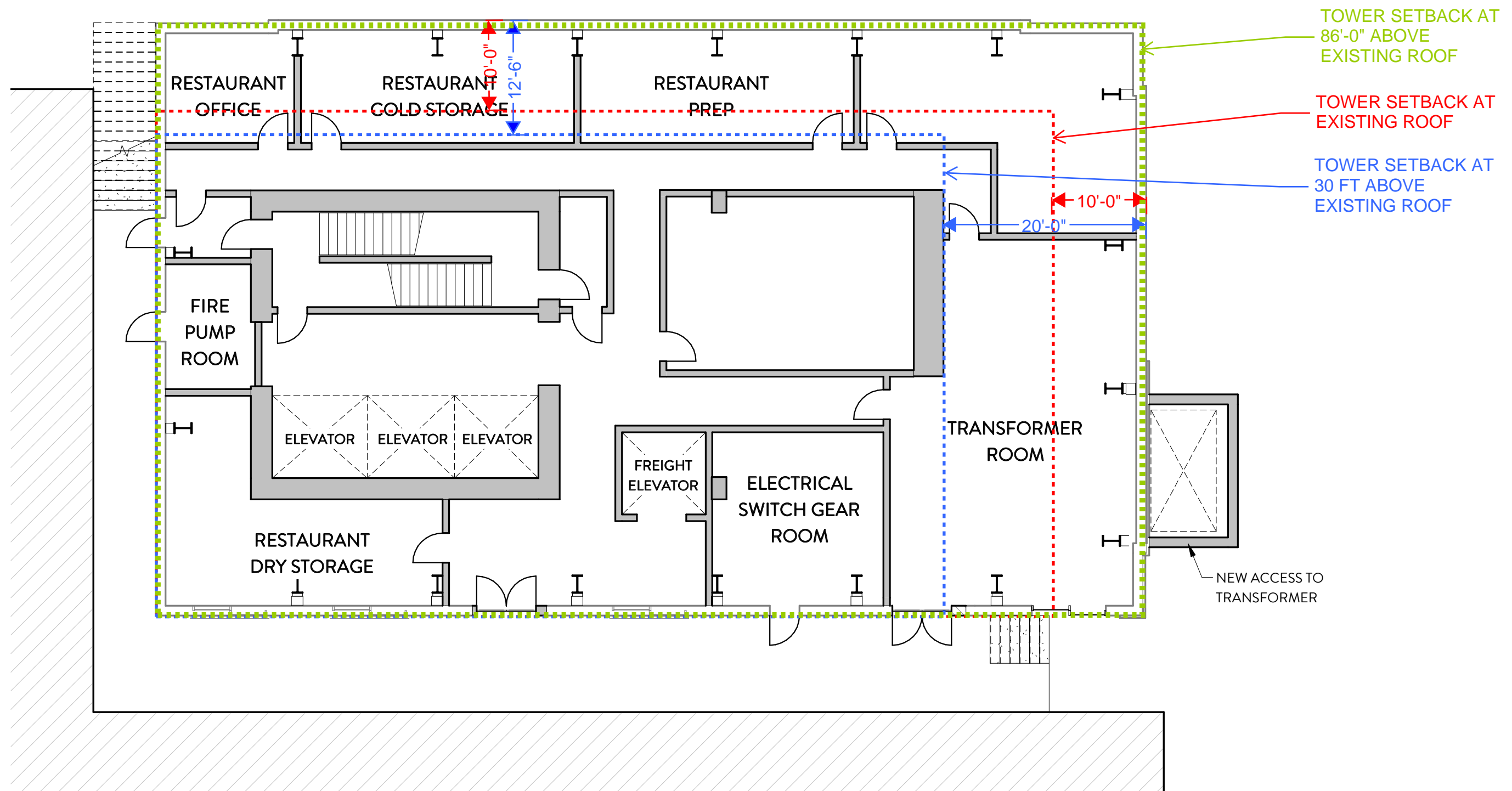
HLC REVIEW & DISCUSSION
August 26, 2019



RHODE : PARTNERS

CLAYTON
& LITTLE

EDCI
ENGINEERS



BASEMENT FLOOR PLAN
SCALE: 3/32" = 1'-0"



RHODE : PARTNERS

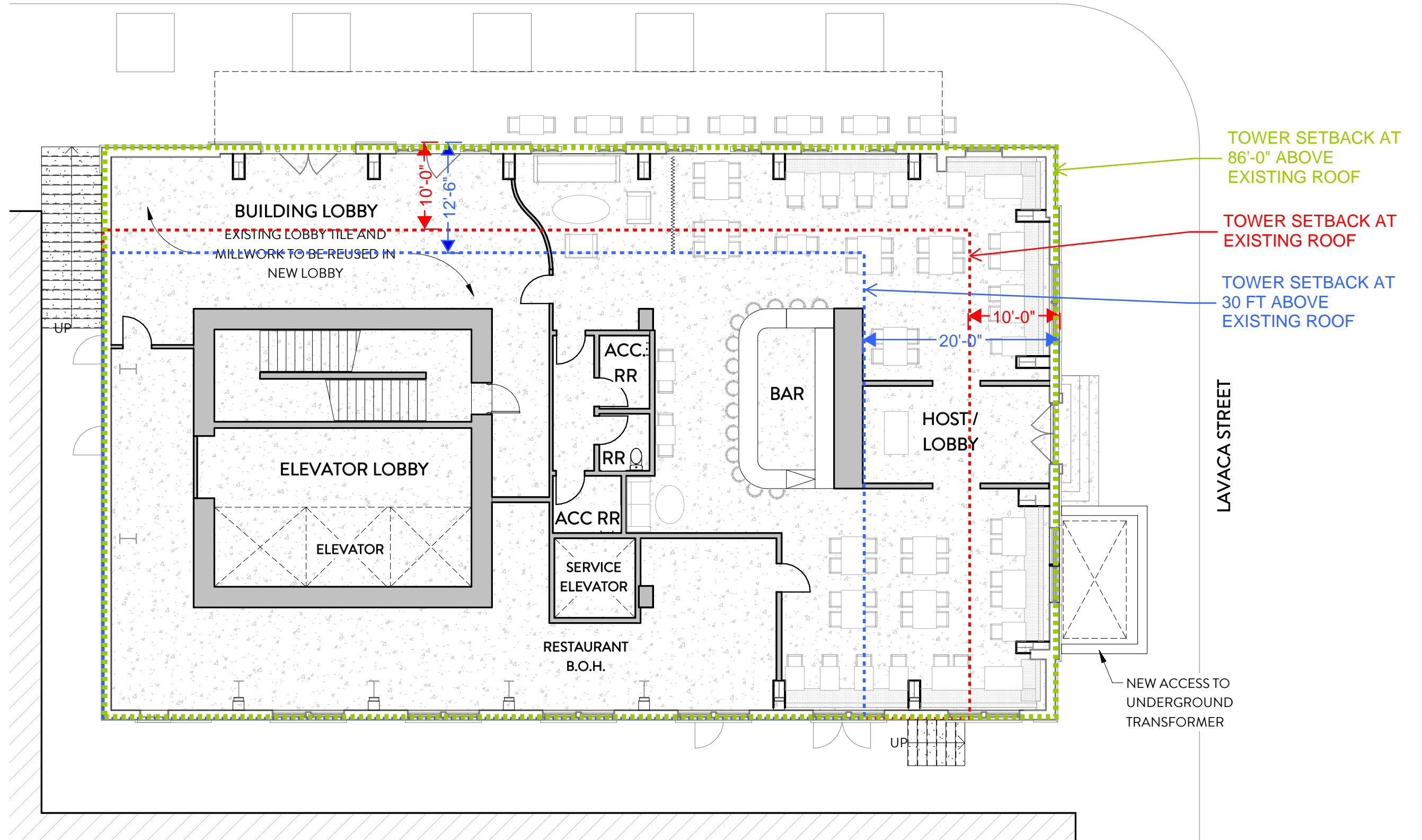
CLAYTON
& LITTLE



311 West 7th Street, Austin, Texas
EXPANSION & REHABILITATION PROPOSAL

HLC REVIEW & DISCUSSION
August 26, 2019

W. SEVENTH STREET



LEVEL 1 FLOOR PLAN
SCALE: 3/32" = 1'-0"



RHODE : PARTNERS

CLAYTON
& LITTLE



311 West 7th Street, Austin, Texas
EXPANSION & REHABILITATION PROPOSAL

HLC REVIEW & DISCUSSION
August 26, 2019