

THIS SET OF DRAWINGS IS FOR INFORMATION ONLY. THIS DOCUMENT IS INCOMPLETE. NOT FOR REGULATORY APPROVAL / PERMITTING / BIDDING OR CONSTRUCTION. ANDREW H. RANDALL, REGISTRATION NO. 22663

DARWIN'S PIANO BAR

223 E 6TH STREET  
AUSTIN, TX 78701

REVISIONS

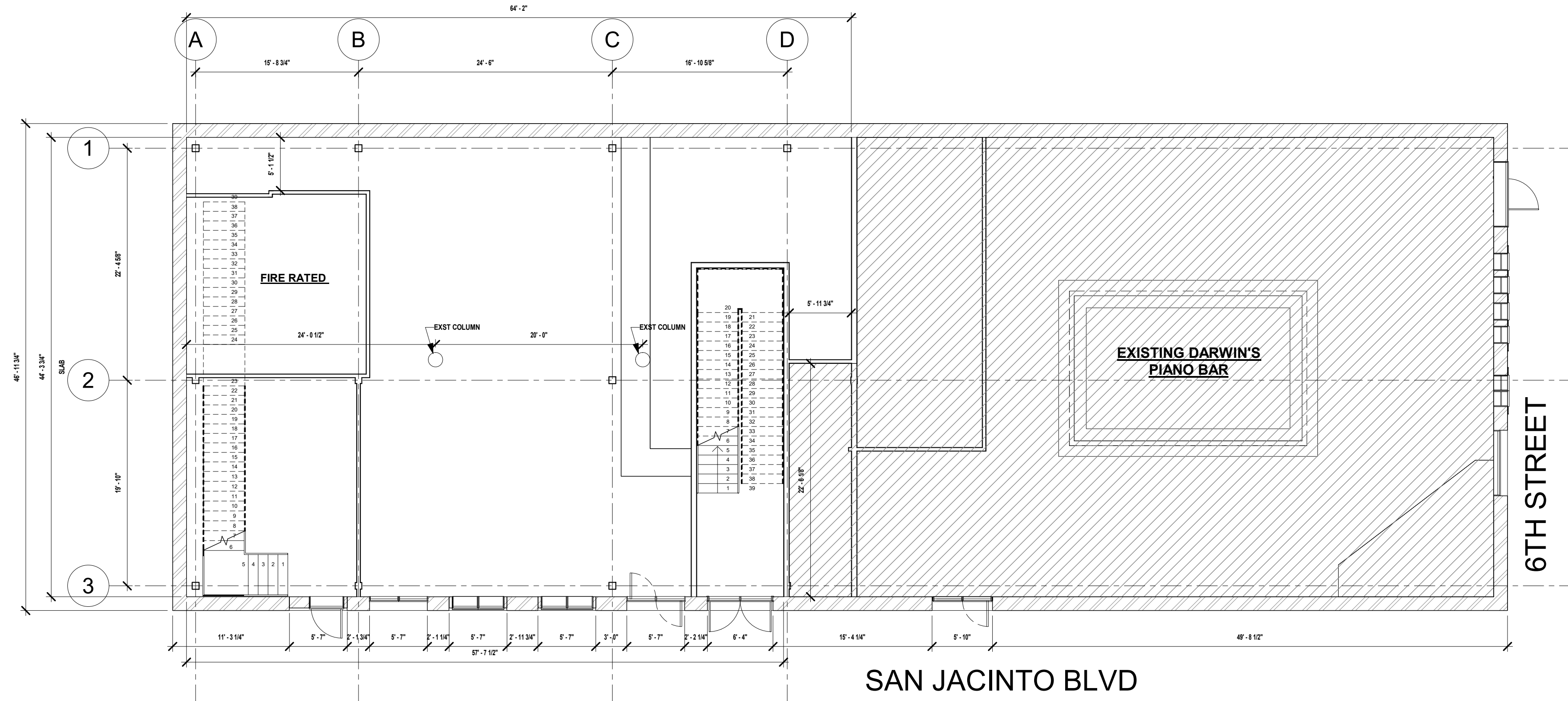
PHASE  
SCHEMATIC

DESCRIPTION  
FLOOR PLAN

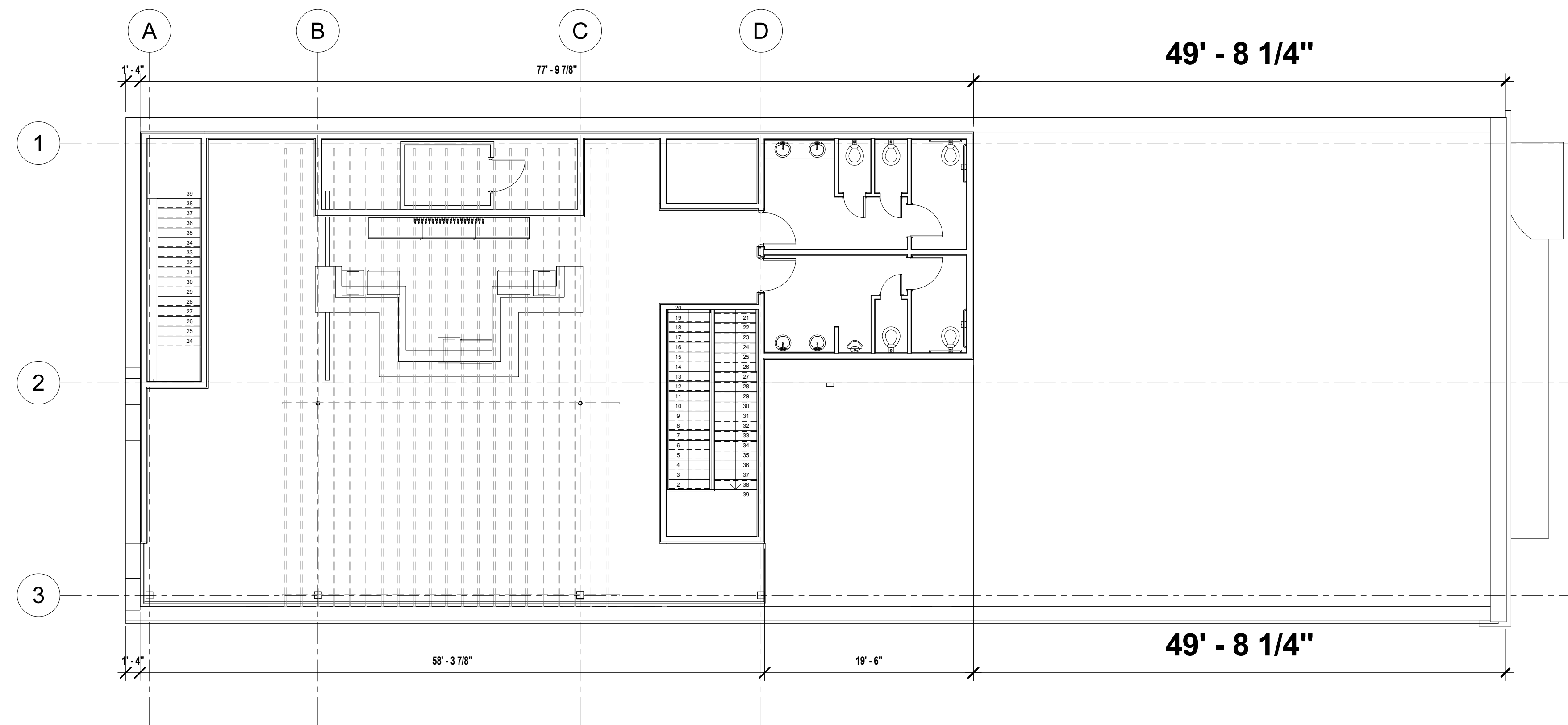


RESIDENTIAL & HOSPITALITY  
ARCHITECTURE & PLANNING  
2124 E. 6th Street  
Ste. 106  
Austin, TX 78702  
(512) 473.8228 Voice  
www.element5architecture.com

8.21.19



1 FIRST FLOOR  
1/8" = 1'-0"



2 ROOF DECK  
1/8" = 1'-0"

THIS SET OF DRAWINGS IS FOR INTERIM REVIEW ONLY. THIS DOCUMENT IS INCOMPLETE. NOT FOR REGULATORY APPROVAL / PERMITTING / BIDDING OR CONSTRUCTION. ANDREW H. RANDALL, REGISTRATION NO. 22663

DARWIN'S PIANO BAR

223 E 6TH STREET  
AUSTIN, TX 78701

REVISIONS

PHASE  
SCHEMATIC

DESCRIPTION  
EXTERIOR ELEVATIONS



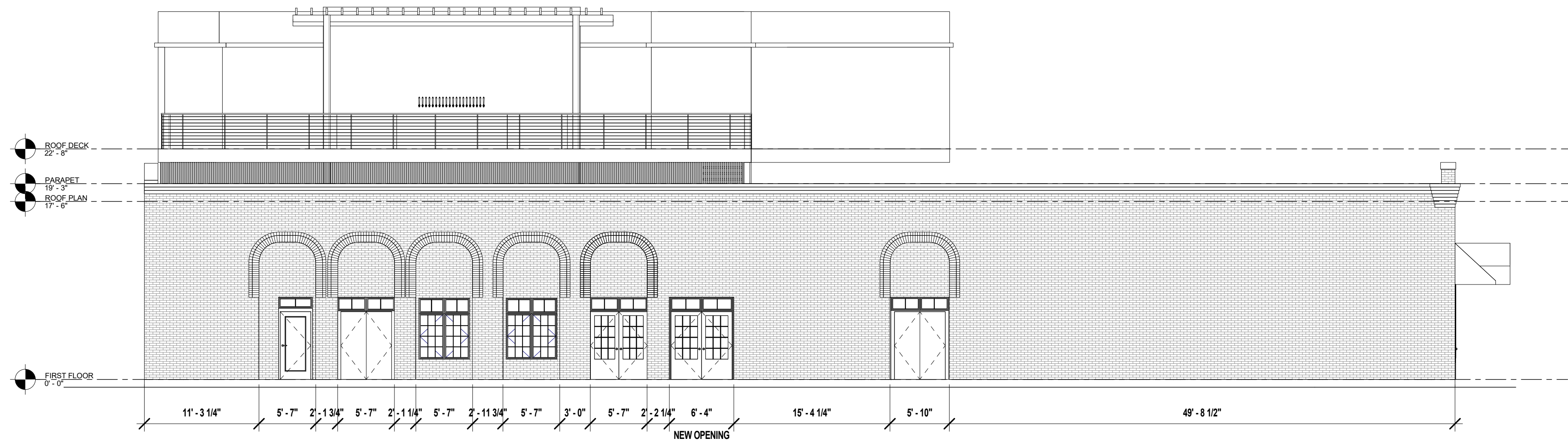
RESIDENTIAL & HOSPITALITY  
ARCHITECTURE & PLANNING

2124 E. 6th Street  
Ste. 106  
Austin, TX 78702  
(512) 473.8228 Voice

www.element5architecture.com

8.21.19

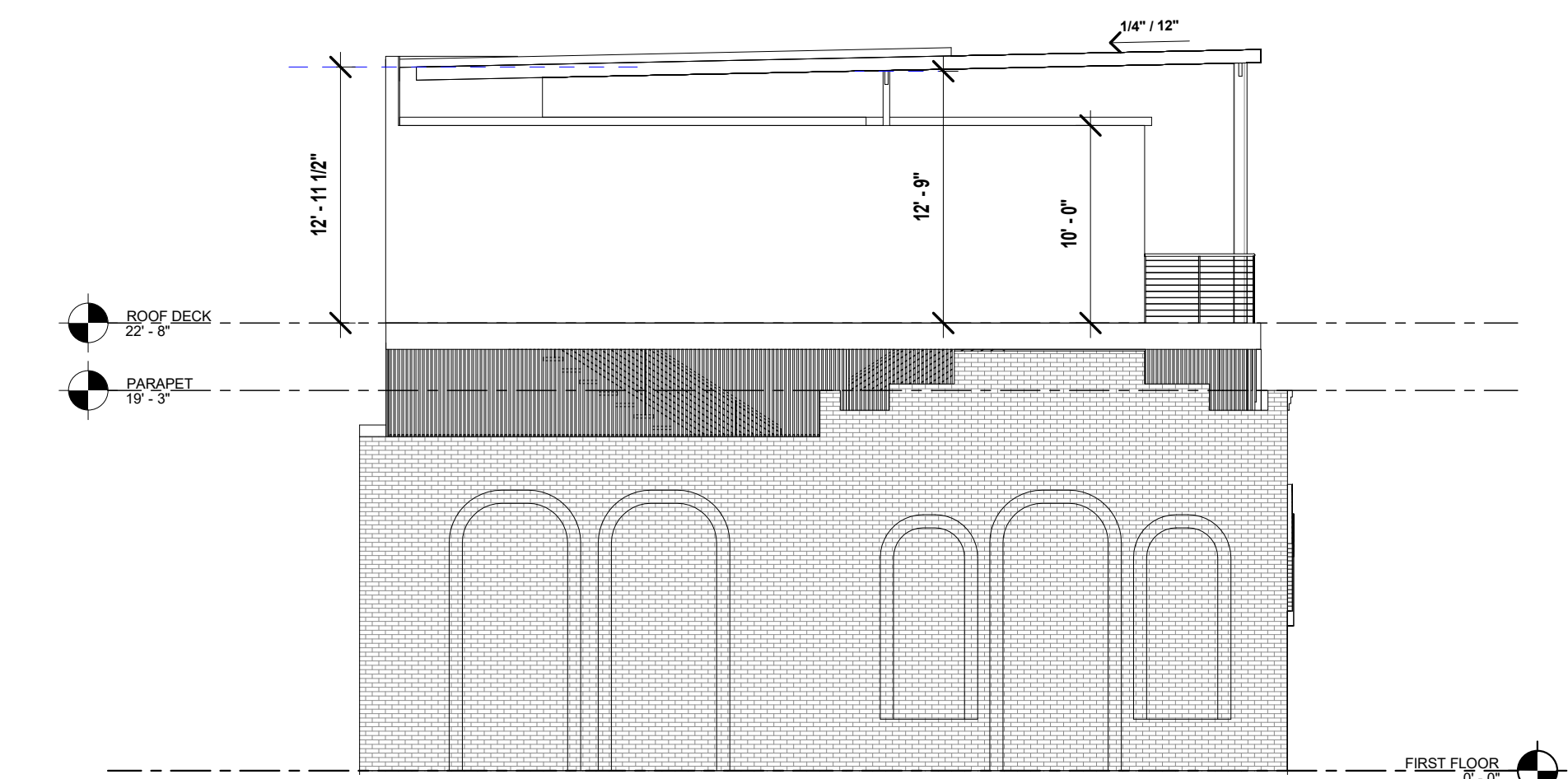
A3.0



2 EAST ELEVATION  
1/8" = 1'-0"



1 NORTH ELEVATION  
1/8" = 1'-0"



3 SOUTH ELEVATION  
1/8" = 1'-0"

THIS SET OF DRAWINGS IS FOR INTERIM REVIEW ONLY. THIS DOCUMENT IS INCOMPLETE. NOT FOR REGULATORY APPROVAL / PERMITTING / BIDDING OR CONSTRUCTION. ANDREW H. RANDALL, REGISTRATION NO. 22663

DARWIN'S PIANO BAR

223 E 6TH STREET  
AUSTIN, TX 78701

REVISIONS

PHASE  
SCHEMATIC

DESCRIPTION  
3D VIEWS



RESIDENTIAL & HOSPITALITY  
ARCHITECTURE & PLANNING  
2124 E. 6th Street  
Ste. 106  
Austin, TX 78702  
(512) 473.6228 Voice  
www.element5architecture.com

8.21.19

