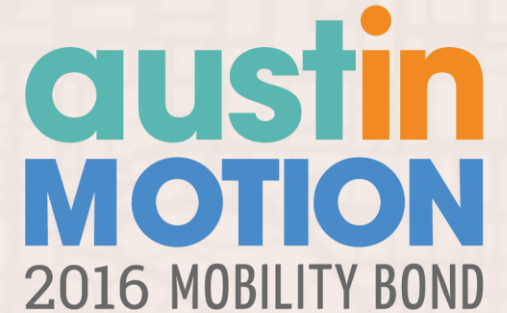
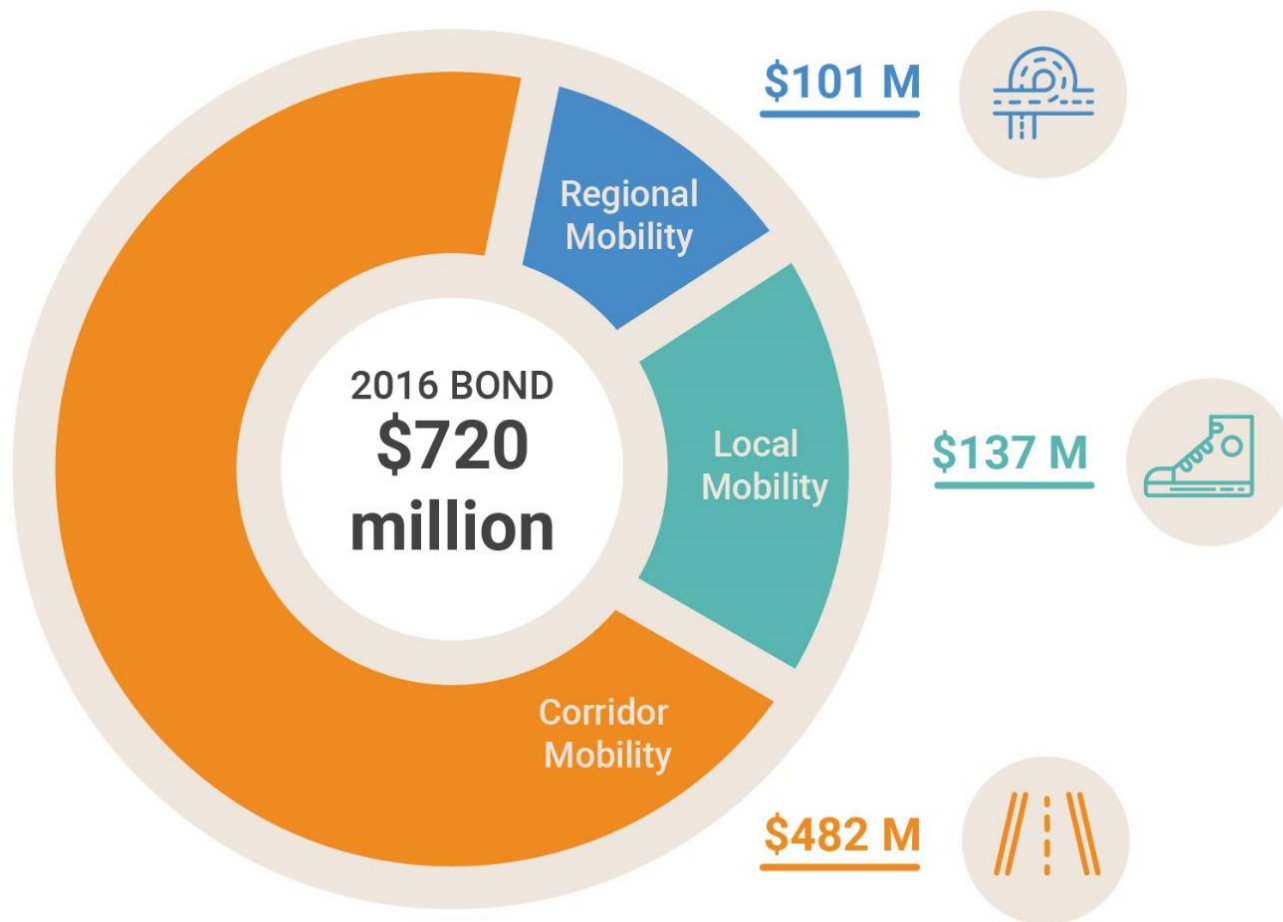


2016 MOBILITY BOND & CORRIDOR CONSTRUCTION PROGRAM

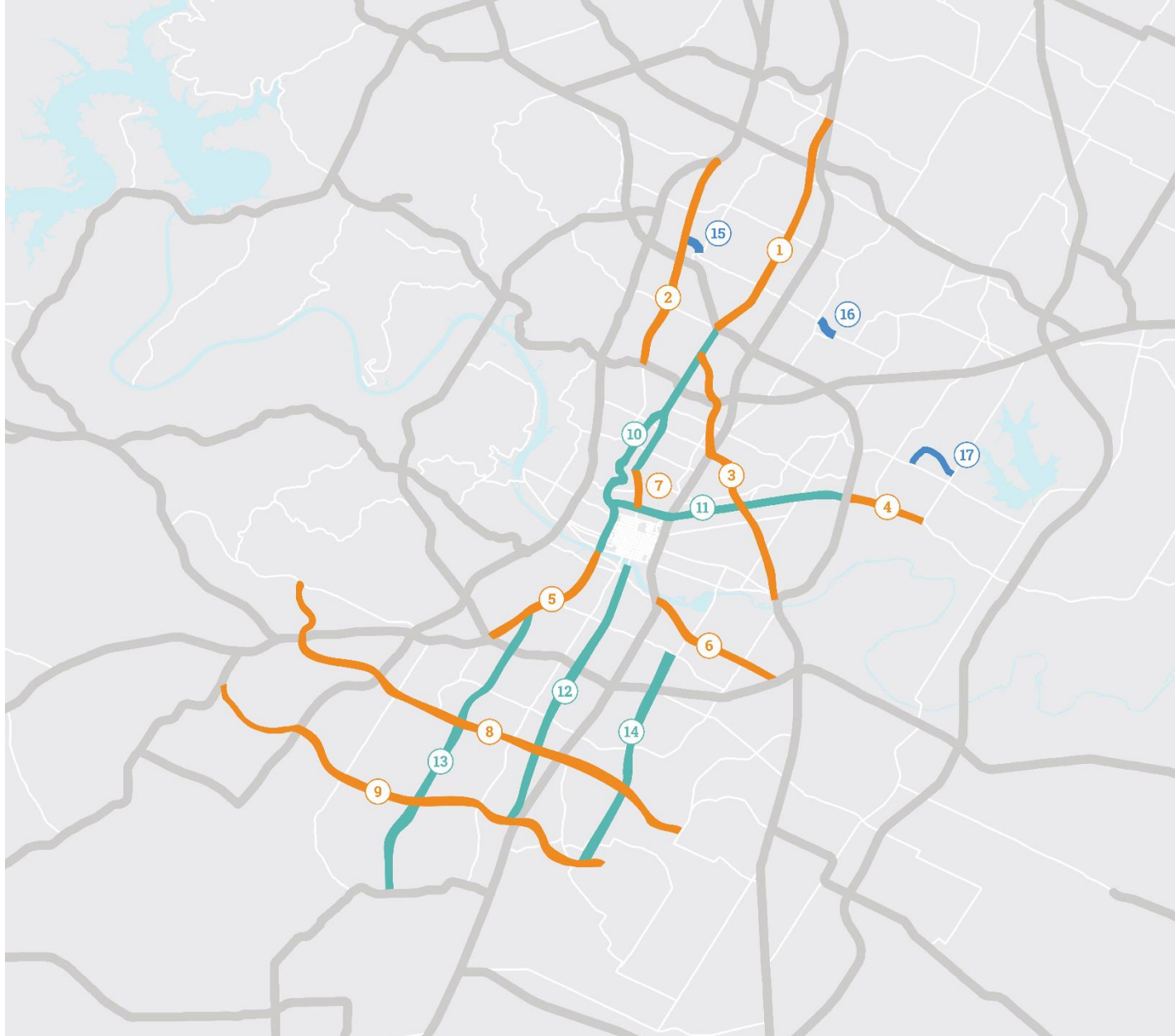
MBE/WBE & SMALL BUSINESS ENTERPRISE
PROCUREMENT PROGRAM ADVISORY COMMITTEE
SEPTEMBER 10, 2019



2016 MOBILITY BOND PROGRAM



CORRIDOR MOBILITY PROGRAM



CORRIDOR CONSTRUCTION PROGRAM:

- 1 North Lamar Boulevard
(US Hwy. 183 to Howard Lane)
- 2 Burnet Road
(Koenig Lane to MoPac Expressway)
- 3 Airport Boulevard
(North Lamar Boulevard to US Hwy. 183)
- 4 East MLK Jr. Boulevard/FM 969
(US Hwy. 183 to Decker Lane)
- 5 South Lamar Boulevard
(Riverside Drive to Ben White
Boulevard/US Hwy. 290 West)
- 6 East Riverside Drive
(I-35 to SH 71)
- 7 Guadalupe Street
(MLK Jr. Boulevard to W. 29th Street)*
- 8 William Cannon Drive
(Southwest Parkway
to McKinney Falls Parkway)*
- 9 Slaughter Lane
(FM 1826 to Vertex Boulevard)*
*Report in progress

PRELIMINARY ENGINEERING:

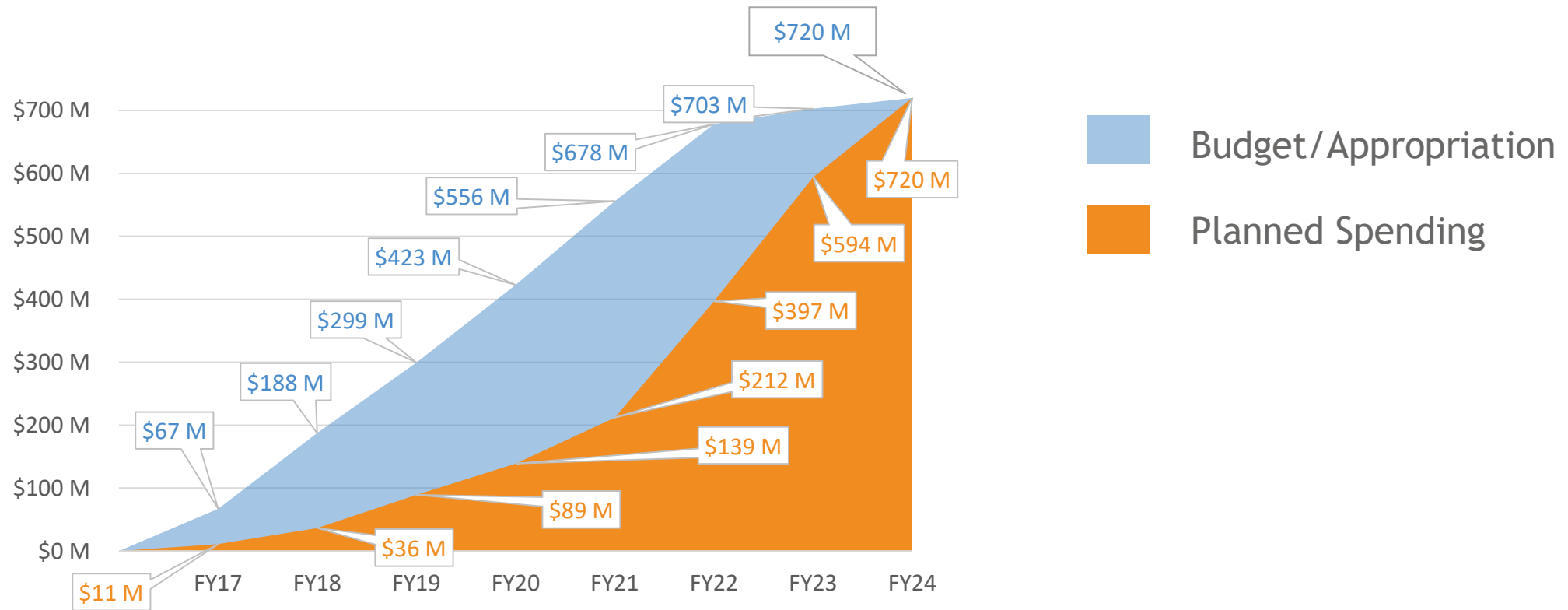
- 10 North Lamar Boulevard
(Lady Bird Lake to US 183) /
Guadalupe Street
(W. 29th St. to North Lamar Boulevard)
- 11 E. MLK Jr. Blvd/FM 969
(North Lamar Boulevard to US 183)
- 12 South Congress Avenue
(Lady Bird Lake to Slaughter Lane)
- 13 Manchaca Road
(South Lamar Boulevard to FM 1626)
- 14 South Pleasant Valley Road
(Oltorf Street to Slaughter Lane)

PRELIMINARY AND DESIGN WORK:

- 15 West Rundberg Lane
(Burnet Road to Metric Boulevard)
- 16 East Rundberg Lane
(Cameron Road to Ferguson Lane)
- 17 Colony Loop Drive
(Loyola Lane to Decker Lane)

2016 MOBILITY BOND

Program spending and schedule on track



PROGRAM HIGHLIGHTS

- 5 Vision Zero intersections
- 141 sidewalk projects constructed
- 20 bikeway projects
- 23 Safe Routes to School Projects
- 7 Urban Trails and trail connectors

Number of completed projects are based on data available as of July 2019 and are subject to change.



CORRIDOR CONSTRUCTION PROGRAM

CORRIDOR CONSTRUCTION PROGRAM



- Transitioning into full design phase
- Construction of first early-out projects already under way
- Accelerating next early-out projects for 2020 construction
- Ongoing coordination with partner departments and agencies
- Continuing outreach and engagement with the community, property owners and businesses
- Over half of the 35 action items in the MBE/WBE Action Plan completed or have commenced

ACCELERATED DELIVERY

- Executive level support and focus
- Robust coordination among programs
- Accelerated processes to meet eight-year goal
- Resources put to key areas of complexity, need
- Keeping community stakeholders engaged and informed
- Mitigate impacts on businesses and neighborhoods
- Stay focused on achieving mobility, community outcomes

EARLY-OUT PROJECTS

- Guadalupe and Lavaca transit improvements
- West Campus sidewalk improvements
- Slaughter Lane safety improvements
- Signal upgrades on all corridors
- North Lamar intersection improvements
- Burnet Road sidewalks



Left: Contraflow lane, Guadalupe and Lavaca Street transit improvements;
Below: Burnet Road pedestrian improvements



POTENTIAL NEXT EARLY-OUT PROJECTS

- Burnet Road intersections (Koenig, Braker)
- South Lamar enhanced multimodal improvements
- North Lamar Boulevard and East Riverside Drive
 - Critical Safety and Mobility Improvements
- CAMPO-funded projects
 - William Cannon
 - Slaughter Lane

*Based on initial preliminary engineering analysis, further design and analysis required to be confirmed

FULL DESIGN PHASE ACTIVITIES

- Finalizing environmental reviews and processes
- Initiating Right of Way/Access Mgmt processes
- Continuing coordination with utilities (private, public)
- Developing drainage mitigation, water quality plans
- Initial project phasing and sequencing; procurement planning
- Permitting process for projects (Development Services)
- Corridor Prep Course as part of MBE/WBE Action Plan
- Continued inter-agency coordination: TxDOT, CapMetro
- Developing Business Success Strategy

CREATING A VISION FOR PLACEMAKING/ PLACEKEEPING



Christine Angelone &
Alexander Bingham AIPP
2016



ATD's "Creative Crosswalks," like this one on Lake
Austin Blvd, increase safety and visibility of
pedestrians.

MBE/WBE OUTREACH

- MBE/WBE Outreach Program is essential to achieving the goals of the Corridor Construction Program.
 - Track MBE/WBE firm participation
 - Support increasing availability and capacity of City-certified MBE/WBE firms
 - Encourage the creation of solicitation opportunities that target availability and capability of City-certified MBE/WBE firms

MBE/WBE OUTREACH

- Corridor Prep Course as part of MBE/WBE Action Plan
 - Five sessions to assist City-certified firms to build capacity to bid and perform on City of Austin projects.
 - Attendance limited to:
 - Firms currently certified by the City of Austin as MBE/WBE construction companies that perform corridor-related Scopes of Work and identified “cross-over” commodity codes.
 - Firms whose MBE/WBE certification (new or renewal) is pending
 - Non-certified firms that perform corridor-related Scopes of Work and have attended SMBR outreach events such as Certification 101 Workshops

MBE/WBE OUTREACH

- Corridor Prep Course Schedule:
 - **September 11, 2019** – Session 1: Corridor Program Overview & Doing Business with the City of Austin (Part One)
 - **September 18, 2019** – Session 2: Doing Business with the City of Austin (Part Two)
 - **September 25, 2019** – Session 3: Submitting Responsive & Effective Bids
 - **October 2, 2019** – Session 4: Project Management
 - **October 9, 2019** – Session 5: Project Invoicing & Close-Out, OSHA Training

QUESTIONS?