

# Adoption of the International Wildland-Urban Interface Code

## Overview (updated September 18, 2019)

The *International Wildland-Urban Interface Code* is designed to bridge the gap between requirements of the *International Building Code* and the *International Fire Code* by mitigating the hazard of wildfires through model code regulations. This comprehensive wildland-urban interface (WUI) code establishes minimum regulations for land use and the built environment in recognized WUI areas. Adoption of the WUI code will provide the Austin Fire Department authority to enforce building construction and vegetation maintenance standards that will reduce wildfire risk in WUI areas (WUI Areas and Hazard Severity map) within Austin's City limits and limited purpose jurisdictions. The model code includes fire protection requirements for new and existing areas and structures, however AFD recommends only applying these requirements to existing areas and structures that are distinct hazards to life or property. Otherwise, the requirements of the WUI code will apply only to new construction being built or brought into the WUI areas and those areas and components of existing structures that are being remodeled or replaced.

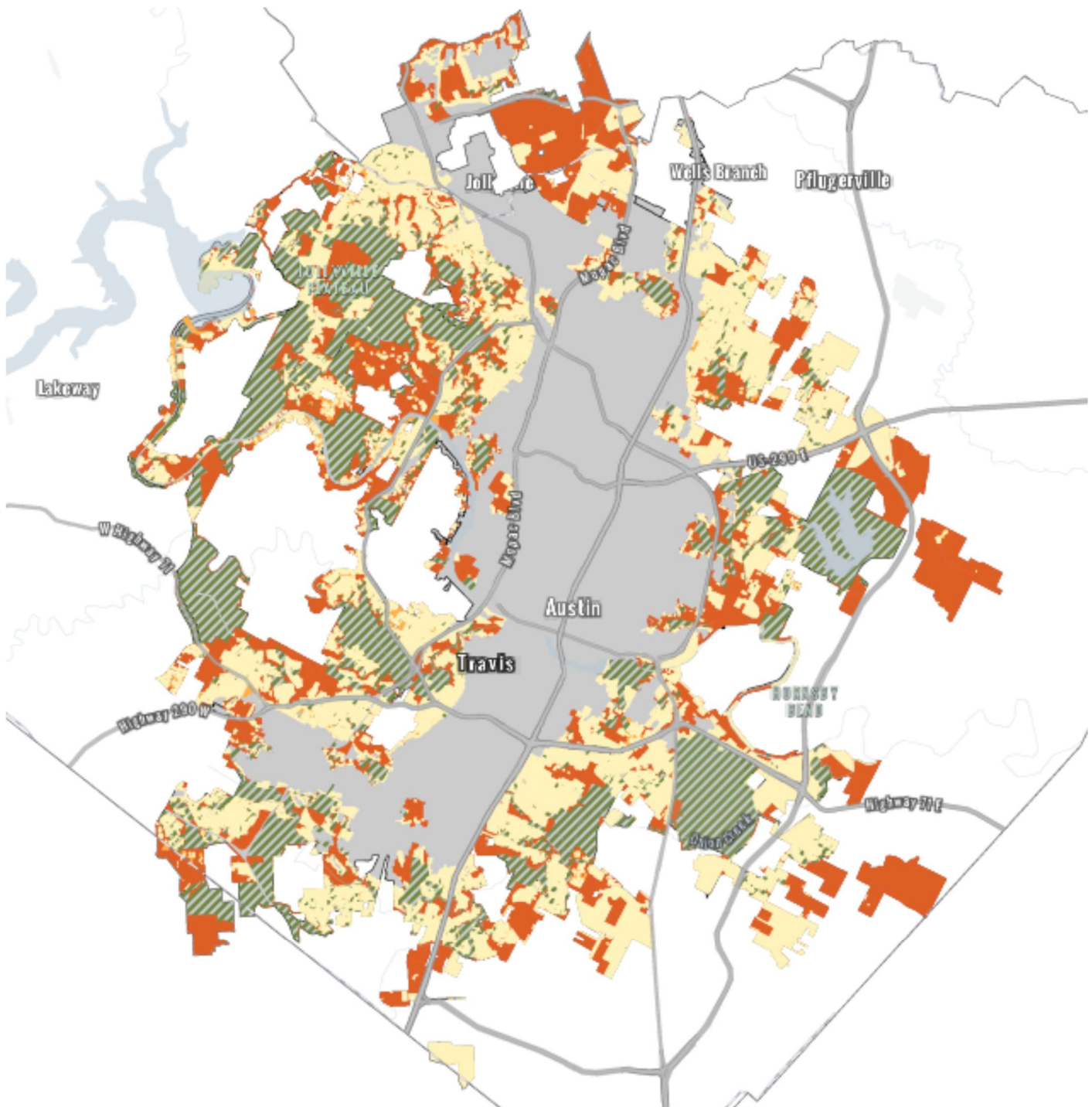
Key elements of the WUI code:

- Permit and inspection processes, fire apparatus access, and water supply (all deferred to Fire Code)
- Identification of WUI areas (WUI Areas and Hazard Severity map)
- Fire protection plans
- Ignition resistant building construction requirements based on wildfire hazard severity, fire apparatus access, water supply, and defensible space
- Fire protection requirements: automatic sprinkler systems (optional or conditional), defensible space, spark arresters, LPG installations (deferred to Fire Code), and storage of combustible materials

Distinct wildfire hazard conditions:

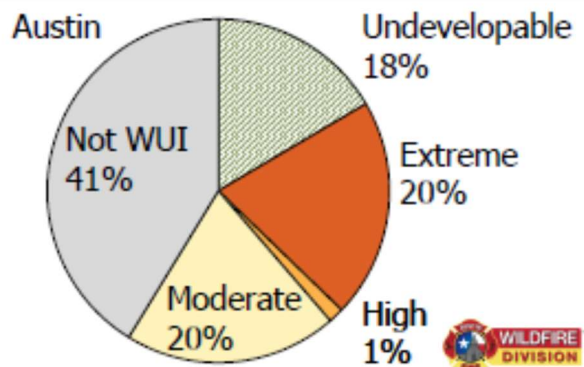
- Structures close to wildland areas, not ignition resistant, and near steep slopes
- Limited access, lack of space, and poor water supply for fire protection
- Lack of natural or built fire breaks
- Accumulated vegetation growth and debris that in periods of elevated fire danger could be expected to produce high fire intensity, fast rate of spread, and potential for fire spread to tree canopies

# WUI Areas and Hazard Severity Map



Fuel Model <sup>b</sup>	Proximity to Contiguous (40 Acres) Wildland Fuels					
	150' to 1.5 miles			< 150'		
	Slope (%)					
	< 10	10 to 25	> 25	< 10	10 to 25	> 25
Light	M	M	M	M	M	H
Medium	M	M	H	E	E	E
Heavy	H	H	H	E	E	E

<https://arcg.is/1L5nbj0>



Updated WUI Footprint September 2019

