

1/8" = 1'-0" @ 11X17

REFERENCES: Border\_Base.dwg, Border\_TileBlock\_Text.dwg, May 22, 2019 - 8:34pm, /tmp/AcfSublan\_46879/701 E 6TH ST 78705 v3.dwg LAYOUT: BASEMENT FLOOR PLAN (2) USER:

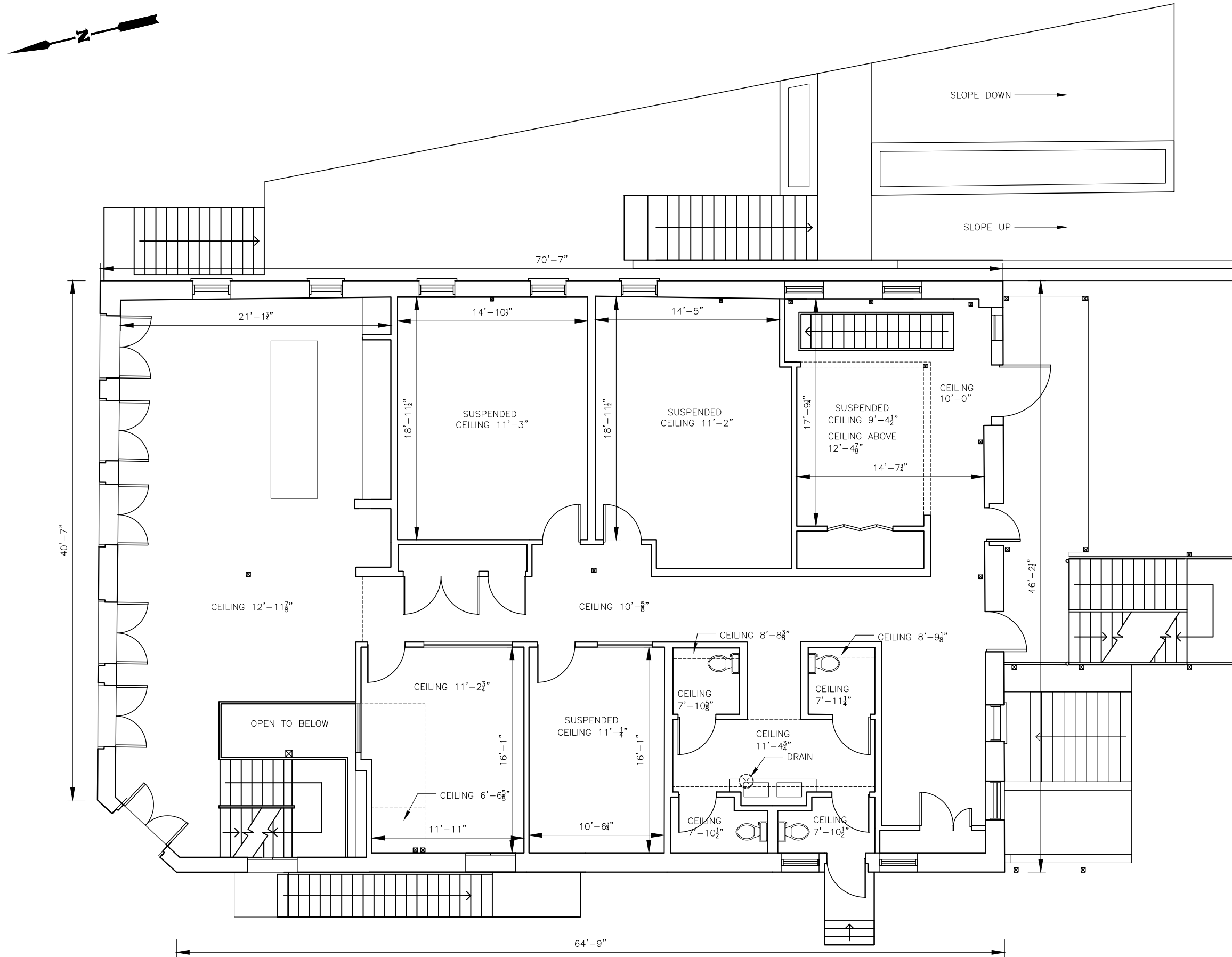
NO.	REVISION	BY	DATE

VERIFY SCALE  
 0 1' 1" NOT ONE INCH ON THIS SHEET, ADJUST SCALE

701 E 6TH ST AUSTIN TEXAS 78701  
**BASEMENT FLOOR PLAN**

Date: MAY 2019
Designed: GMC
Drawn: GMC
Reviewed: GMC
ATXCAD Proj. No.

REFERENCES: Border\_Base.dwg, Border\_TileBlock\_Text.dwg, May 22, 2019 - 8:34pm /tmp/Acfubian\_46879/701 E 6TH ST 78705 v3.dwg LAYOUT: EXISTING GROUND FLOOR PLAN USER:



1/8" = 1'-0" @ 11X17

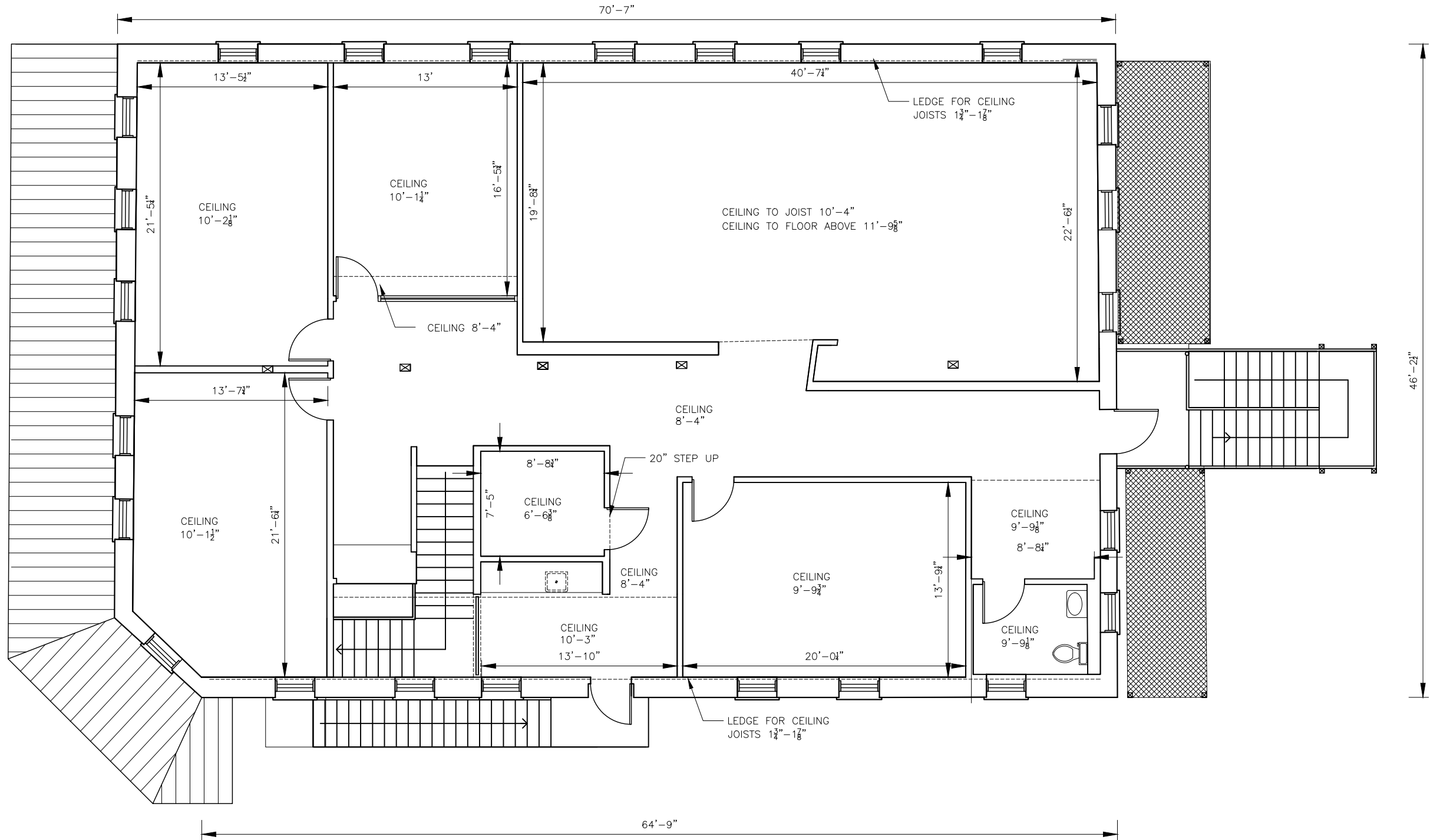
NO.	REVISION	BY	DATE

VERIFY SCALE  
0 1' 2'  
BARS IS ONE INCH ON ORIGINAL DRAWING. IF NOT ONE INCH ON THIS SHEET, ADJUST SCALE

701 E 6TH ST AUSTIN TEXAS 78701  
**EXISTING GROUND FLOOR PLAN**

Date: MAY 2019
Designed: GMC
Drawn: GMC
Reviewed: GMC
ATXCAD Proj. No.

REFERENCES: Border\_Base.dwg Border\_TileBlock\_Text  
 May 22, 2019 - 8:34pm /tmp/AcfSublan\_46879/701 E 6TH ST 78705 v3.dwg LAYOUT: EXISTING 2ND FLOOR PLAN USER:



1/8" = 1'-0" @ 11X17

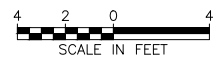
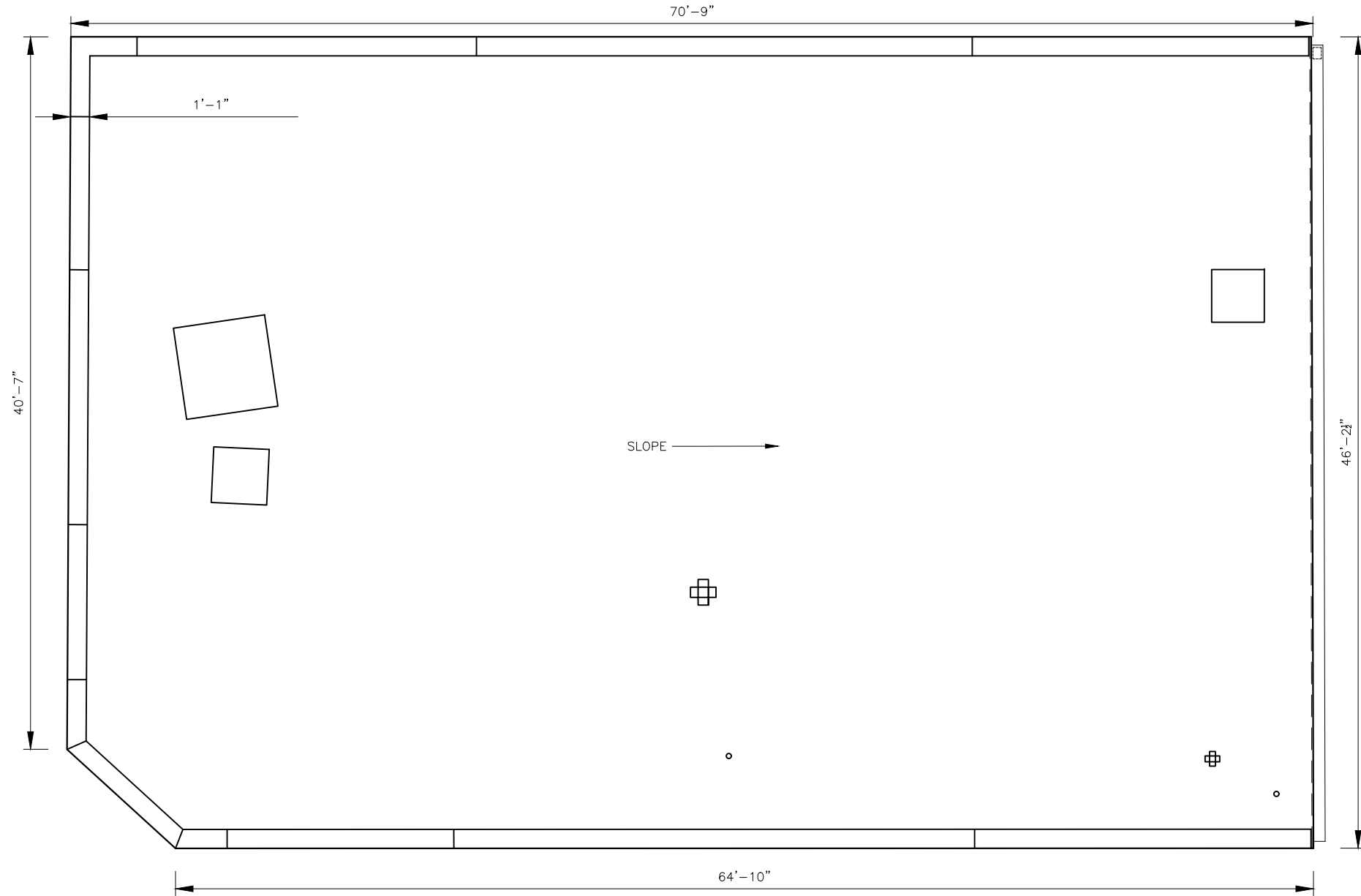
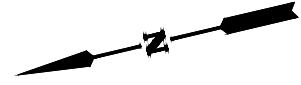
NO.	REVISION	BY	DATE

VERIFY SCALE  
 0 1' NOT ONE INCH ON THIS SHEET, ADJUST SCALE

701 E 6TH ST AUSTIN TEXAS 78701  
**EXISTING 2ND FLOOR PLAN**

Date: MAY 2019
Designed: GMC
Drawn: GMC
Reviewed: GMC
ATXCAD Proj. No.

REFERENCES: Border\_Base.dwg /tmp/Border\_TileBlock\_Text  
 May 22, 2019 - 8:34pm /tmp/AcfSublan\_46879/701 E 6TH ST 78705 v3.dwg LAYOUT: EXISTING ROOF FLOOR PLAN USER:



1/8" = 1'-0" @ 11X17

Date: MAY 2019  
 Designed:  
 Drawn: GMC  
 Reviewed: GMC  
 ATXCAD Proj. No.

SHEET  
 4  
 SHEET 4 OF 8

701 E 6TH ST AUSTIN TEXAS 78701

EXISTING ROOF PLAN

NO.	REVISION	BY	DATE

VERIFY SCALE  
 0 1' 2'  
 BAR IS ONE INCH ON ORIGINAL DRAWING. IF NOT ONE INCH ON THIS SHEET, ADJUST SCALE

REFERENCES: Border\_Base.dwg Border\_TileBlock\_Text  
 May 22, 2019 - 8:34pm /tmp/AcfSublan\_46879/701 E 6TH ST 78705 v3.dwg LAYOUT: SOUTH ELEVATION USER:

ROOF HIGHEST SLOPE  
 28'-8 1/2"

ROOF LOWEST SLOPE  
 26'-5 1/2"

2ND FLOOR  
 14'-11 1/2"

FIRST FLOOR  
 0'-0"

BASEMENT -7'-11 1/2"



SCALE IN FEET  
 1/4" = 1'-0" © 11X17

NO.	REVISION	BY	DATE

VERIFY SCALE  
 0 1' 2'  
 BAR IS ONE INCH ON ORIGINAL DRAWING. IF NOT ONE INCH ON THIS SHEET, ADJUST SCALE

701 E 6TH ST AUSTIN TEXAS 78701

SOUTH ELEVATION

Date: MAY 2019  
 Designed: GMC  
 Drawn: GMC  
 Reviewed: GMC  
 ATXCAD Proj. No.

NO.	REVISION	BY	DATE

VERIFY SCALE  
 0 1' 2'  
 BAR IS ONE INCH ON ORIGINAL DRAWING. IF NOT ONE INCH ON THIS SHEET, ADJUST SCALE

701 E 6TH ST AUSTIN TEXAS 78701  
**NORTH ELEVATION**

Date: MAY 2019
Designed: GMC
Drawn: GMC
Reviewed: GMC
ATXCAD Proj. No.

ROOF HIGHEST SLOPE  
 28'-8 $\frac{1}{2}$ "

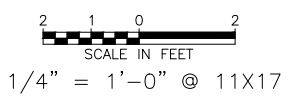
ROOF LOWEST SLOPE  
 26'-5 $\frac{1}{2}$ "

2ND FLOOR  
 14'-11 $\frac{1}{2}$ "

FIRST FLOOR  
 0'-0"

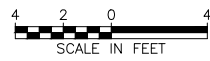
BASEMENT = 7'-11 $\frac{1}{2}$ "

LOWEST STEP  
 -0'-2 $\frac{3}{4}$ "



REFERENCES: Border\_Base.dwg Border\_TileBlock\_Text  
 May 22, 2019 - 8:34pm /tmp/AcfSublan\_46879/701 E 6TH ST 78705 v3.dwg LAYOUT: NORTH ELEVATION USER:

REFERENCES: Border\_Base.dwg Border\_TileBlock\_Text  
 May 22, 2019 - 8:34pm /tmp/Acfubian\_46879/701 E 6TH ST 78705 v3.dwg LAYOUT: EAST ELEVATION USER:



1/8" = 1'-0" @ 11X17

NO.	REVISION	BY	DATE

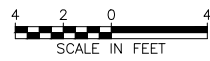
VERIFY SCALE  
 0 1' NOT ONE INCH ON THIS SHEET, ADJUST SCALE

701 E 6TH ST AUSTIN TEXAS 78701

**EAST ELEVATION**

Date: MAY 2019
Designed: GMC
Drawn: GMC
Reviewed: GMC
ATXCAD Proj. No.

REFERENCES: Border\_Base.dwg Border\_TileBlock\_Text  
 May 22, 2019 - 8:34pm /tmp/AcfSublan\_46879/701 E 6TH ST 78705 v3.dwg LAYOUT: WEST ELEVATION USER:



1/8" = 1'-0" © 11X17

NO.	REVISION	BY	DATE

VERIFY SCALE  
 1" = 1'-0"  
 0 1' 2'

BAR IS ONE INCH ON ORIGINAL DRAWING. IF NOT ONE INCH ON THIS SHEET, ADJUST SCALE

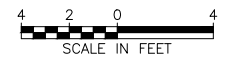
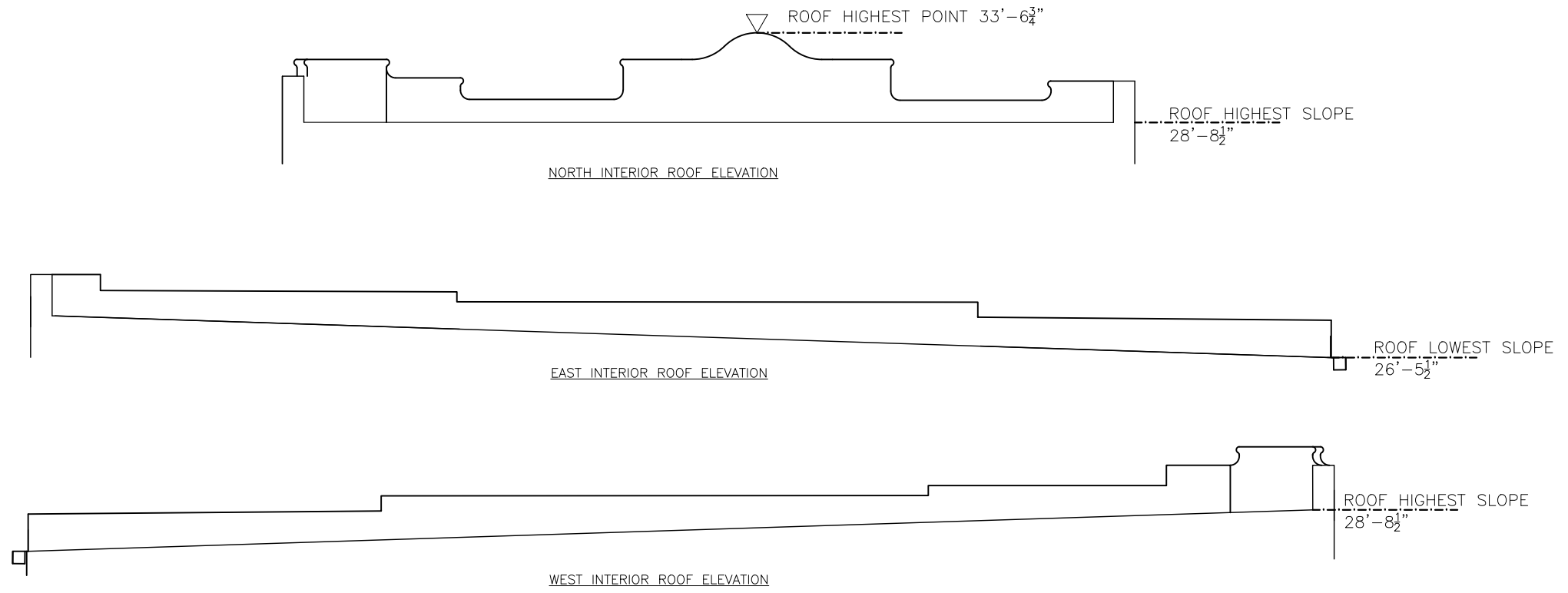
701 E 6TH ST AUSTIN TEXAS 78701

**WEST ELEVATION**

Date: MAY 2019
Designed: GMC
Drawn: GMC
Reviewed: GMC
ATXCAD Proj. No.



REFERENCES: Border\_Base.dwg Border\_TileBlock\_Text  
 May 22, 2019 - 8:34pm /tmp/Acfubian\_46879/701 E 6TH ST 78705 v3.dwg LAYOUT: INTERIOR ROOF ELEVATIONS USER:



1/8" = 1'-0" © 11X17

NO.	REVISION	BY	DATE

VERIFY SCALE  
 0 1' 2'  
 BAR IS ONE INCH ON ORIGINAL DRAWING. IF NOT ONE INCH ON THIS SHEET, ADJUST SCALE

701 E 6TH ST AUSTIN TEXAS 78701

INTERIOR ROOF ELEVATION

Date: MAY 2019
Designed: GMC
Drawn: GMC
Reviewed: GMC
ATXCAD Proj. No.