



COURTESY OF AUSTIN HISTORY CENTER, PHOTO TAKEN 1926

The Royal Arch Masonic Lodge was constructed in 1926 and was designed by architects J. G. Daves and W. E. Ketchum. The building is arts and crafts in overall form with prominent classical revival elements.

Most significant is the long, crested metal awning across the main north façade which terminates with arched ends and is tied back to the structure with angled metal struts. Other classical features include an array of limestone detailing such as the handsome broken arched pediment at the east entry, horizontal banding, decorative cartouches and the carved mason's emblem adorning the top parapet on the north elevation.

The structure is Concrete slab-on-grade with perimeter concrete foundation walls and perimeter columns and interior columns. There is clay tile infill with brick veneer. There are two types of exterior brick veneer: a rough-faced, textured tan blend on the primary north and east facades, and an Austin common blend for the secondary, south and west facades.

The structure is built on a sloping site and is three full levels including the basement and a partial fourth level that occupies the north portion of the footprint. It aligns with the west façade and is stepped back 11'-5" from the east façade. There is a small elevator penthouse in the northwest corner.

The structure was designated a City of Austin Historic Landmark in 2000.



RHODE PARTNERS

**CLAYTON
& LITTLE**

**311 West 7th Street, Austin, Texas
EXPANSION & REHABILITATION PROPOSAL**

HLC REVIEW & DISCUSSION
September 23, 2019



VIEW FROM W. 7th STREET - NORTH ELEVATION

MAY 2019

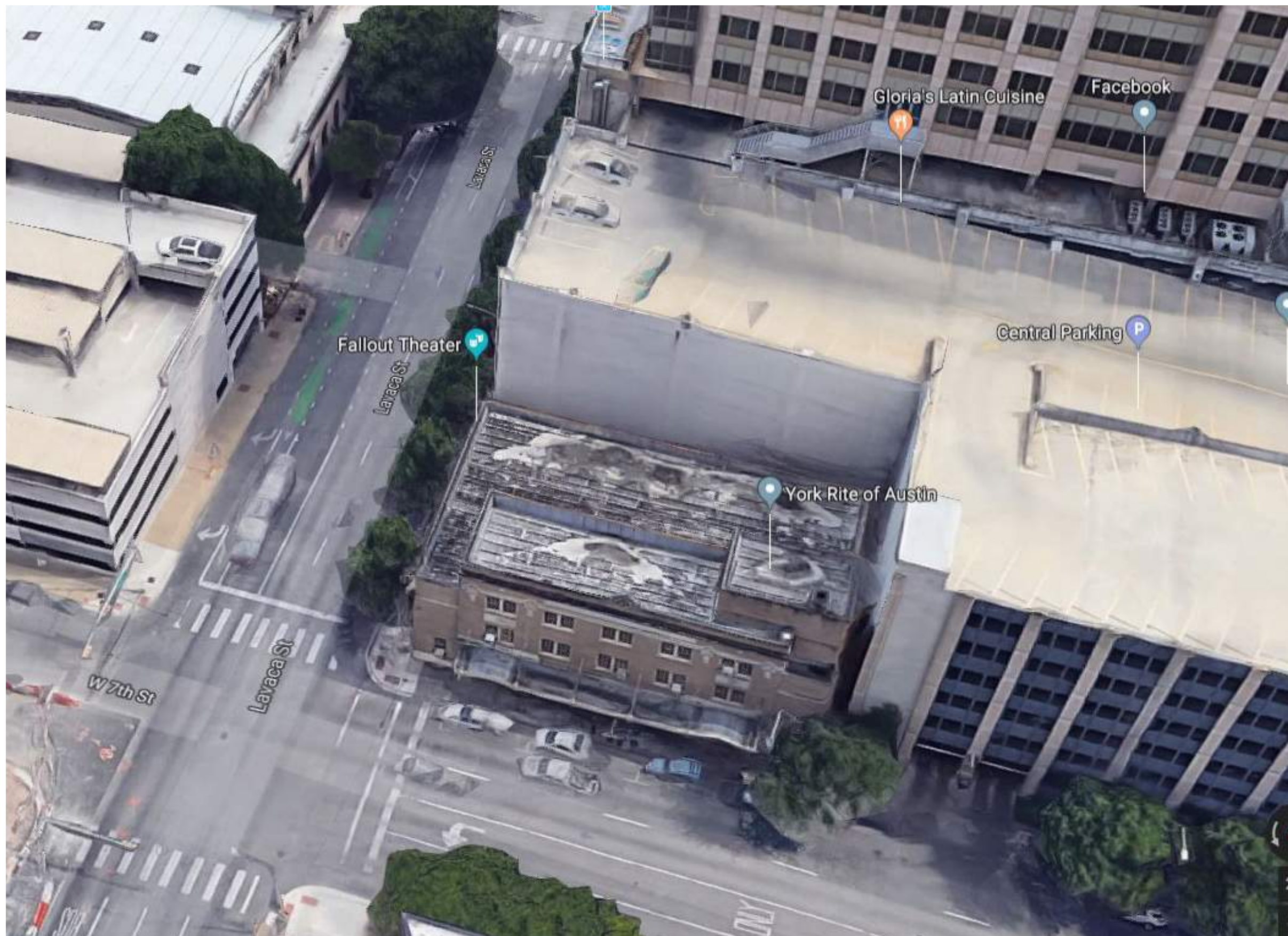


RHODE PARTNERS

**CLAYTON
& LITTLE**

**311 West 7th Street, Austin, Texas
EXPANSION & REHABILITATION PROPOSAL**

HLC REVIEW & DISCUSSION
September 23, 2019



AERIAL VIEW

MAY 2019



RHODE PARTNERS

**CLAYTON
& LITTLE**

**311 West 7th Street, Austin, Texas
EXPANSION & REHABILITATION PROPOSAL**

HLC REVIEW & DISCUSSION
September 23, 2019



RESTORE HISTORIC MASONS' ENTRY & LOBBY



REPAIR DETERIORATING BUILDING DETAILS

MAY 2019

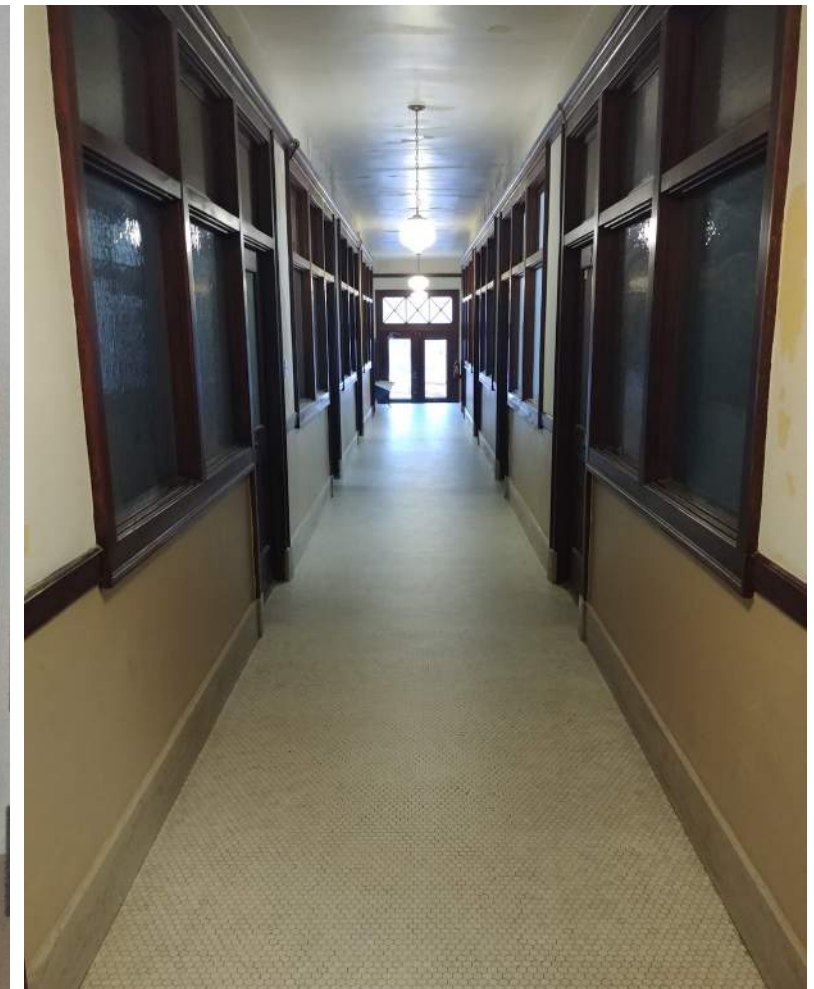


RHODE PARTNERS

**CLAYTON
& LITTLE**

**311 West 7th Street, Austin, Texas
EXPANSION & REHABILITATION PROPOSAL**

HLC REVIEW & DISCUSSION
September 23, 2019



RESTORE HISTORIC INTERIOR AT MASONS' ENTRY LOBBY



RHODE : PARTNERS

**CLAYTON
& LITTLE**

**311 West 7th Street, Austin, Texas
EXPANSION & REHABILITATION PROPOSAL**

HLC REVIEW & DISCUSSION
September 23, 2019



VICEROY CHICAGO

CHICAGO, ILLINOIS

*HISTORIC STRUCTURE BUILT CIRCA 1920'S
NEW CONSTRUCTION COMPLETED 2017*



RHODE PARTNERS

**CLAYTON
& LITTLE**

**311 West 7th Street, Austin, Texas
EXPANSION & REHABILITATION PROPOSAL**

CERTIFICATE OF APPROPRIATENESS REVIEW
September 23, 2019



HEARST TOWER

MANHATTAN, NEW YORK

HISTORIC STRUCTURE BUILT CIRCA 1928
NEW CONSTRUCTION COMPLETED 2006



RHODE : PARTNERS

**CLAYTON
& LITTLE**

311 West 7th Street, Austin, Texas
EXPANSION & REHABILITATION PROPOSAL

CERTIFICATE OF APPROPRIATENESS REVIEW
September 23, 2019



RHODE : PARTNERS

**CLAYTON
& LITTLE**

EDCI
ENGINEERS

**311 West 7th Street, Austin, TX
EXPANSION AND REHABILITATION PROPOSAL**

APPLICATION FOR CERTIFICATE OF APPROPRIATENESS REVIEW
September 23, 2019

NO CHANGES TO HISTORIC FACADE -
EXCEPT REMOVAL OF ELEVATOR ROOM



NORTH ELEVATION - PROPOSED



NORTH ELEVATION - EXISTING



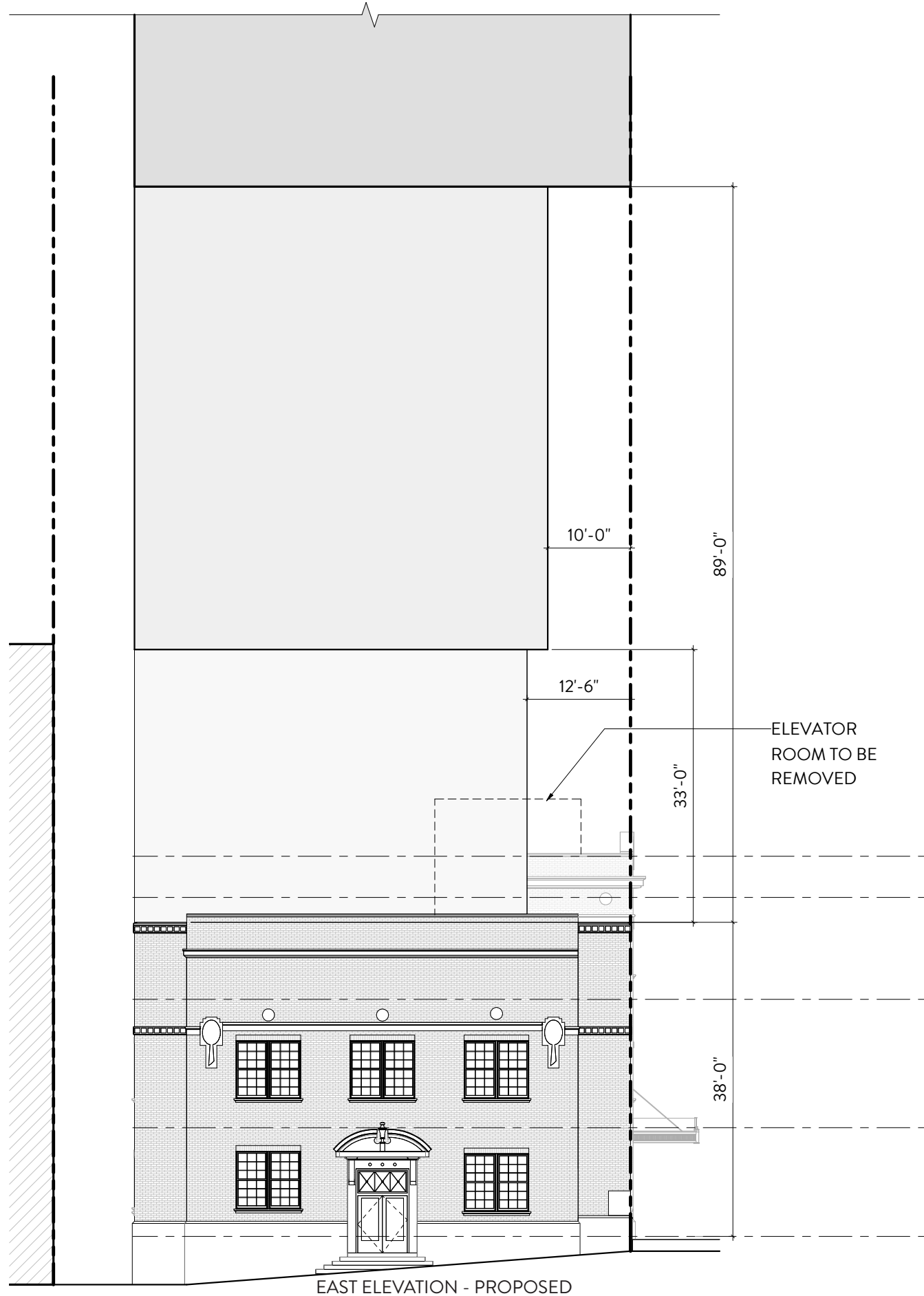
RHODE : PARTNERS

CLAYTON
& LITTLE

311 West 7th Street, Austin, Texas
EXPANSION & REHABILITATION PROPOSAL

HLC REVIEW & DISCUSSION
September 23, 2019

NO CHANGES TO HISTORIC FACADE -
EXCEPT REMOVAL OF ELEVATOR ROOM

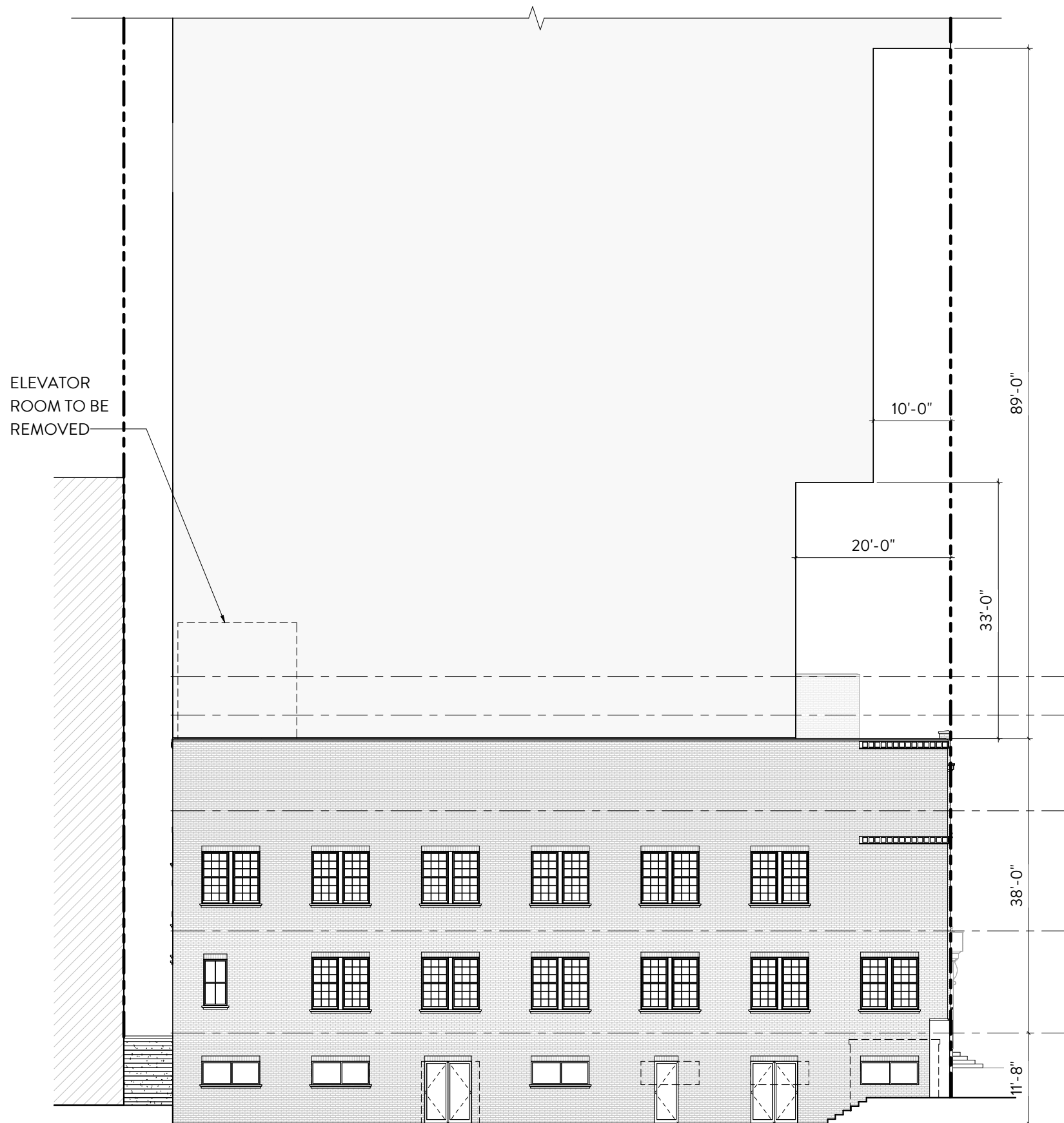


RHODE : PARTNERS

CLAYTON
& LITTLE

311 West 7th Street, Austin, Texas
EXPANSION & REHABILITATION PROPOSAL

HLC REVIEW & DISCUSSION
September 23, 2019



SOUTH ELEVATION - PROPOSED

MINIMAL CHANGES TO OPENINGS AT ALLEY LEVEL ONLY



SOUTH ELEVATION - EXISTING



RHODE : PARTNERS

**CLAYTON
& LITTLE**

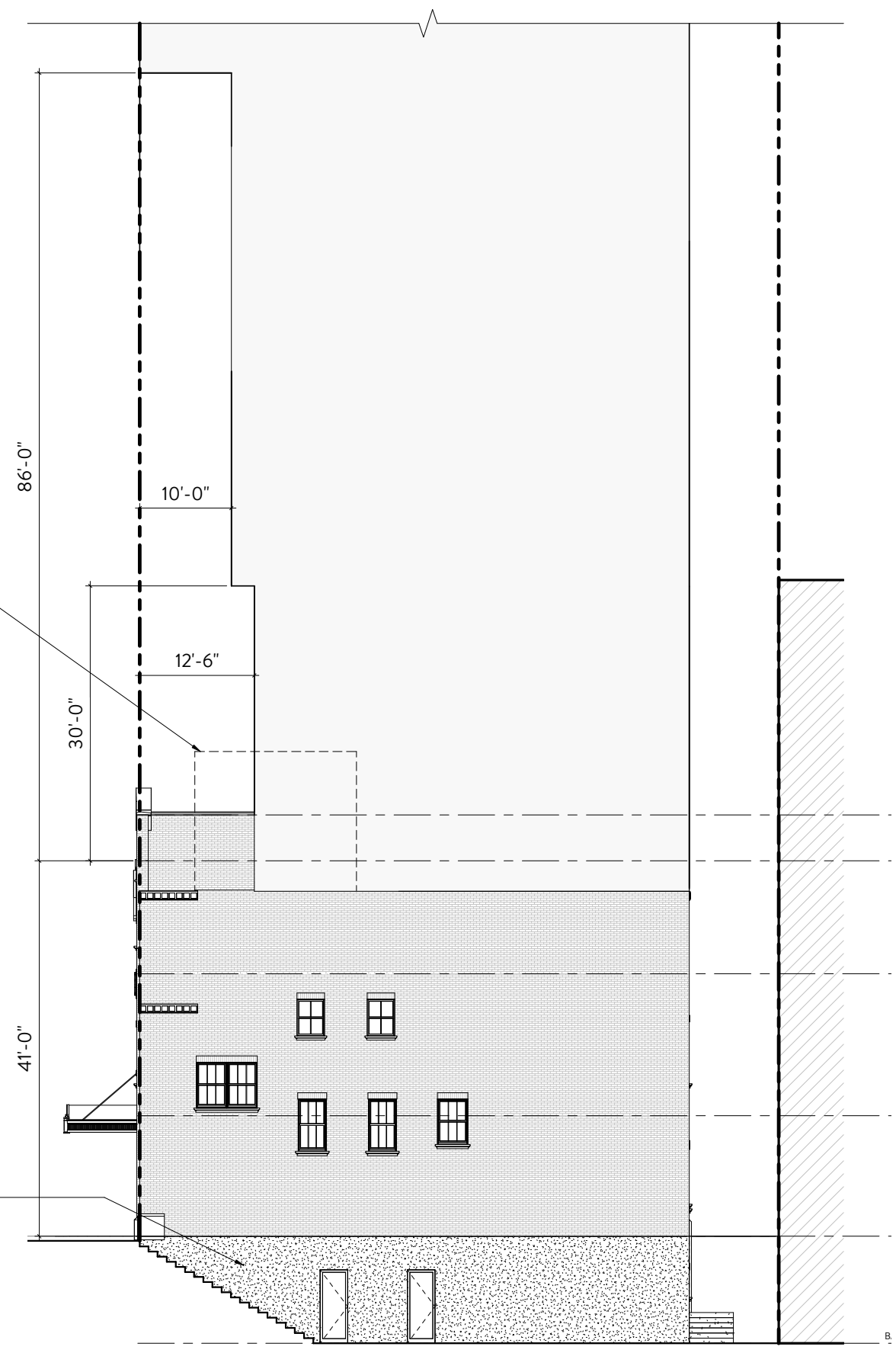
**311 West 7th Street, Austin, Texas
EXPANSION & REHABILITATION PROPOSAL**

HLC REVIEW & DISCUSSION
September 23, 2019

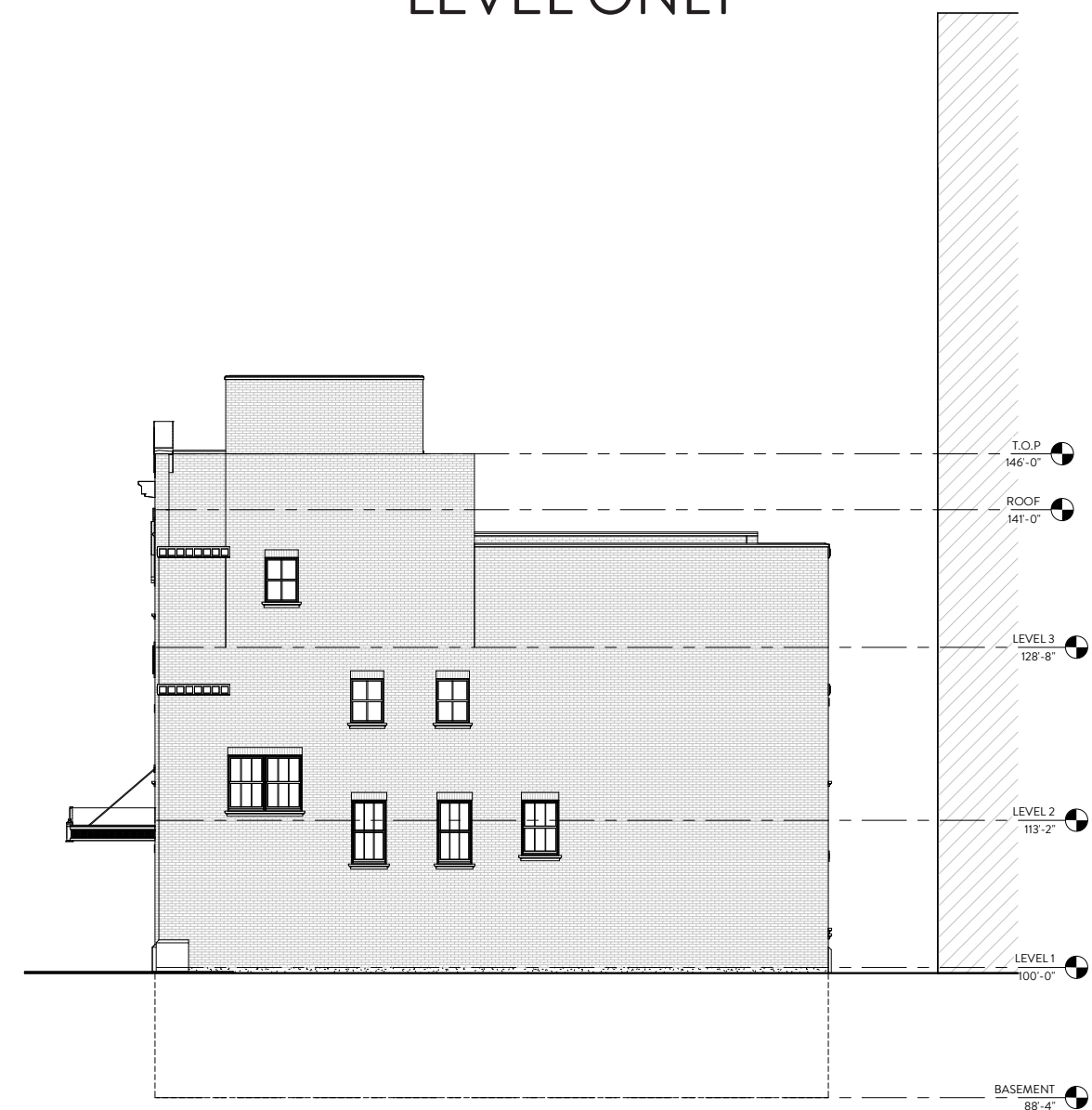
NEW OPENINGS AT ALLEY LEVEL ONLY

ELEVATOR ROOM
TO BE REMOVED

NEW STUCCO
FINISH WHERE
FOUNDATION IS
EXPOSED



WEST ELEVATION - PROPOSED



WEST ELEVATION - EXISTING

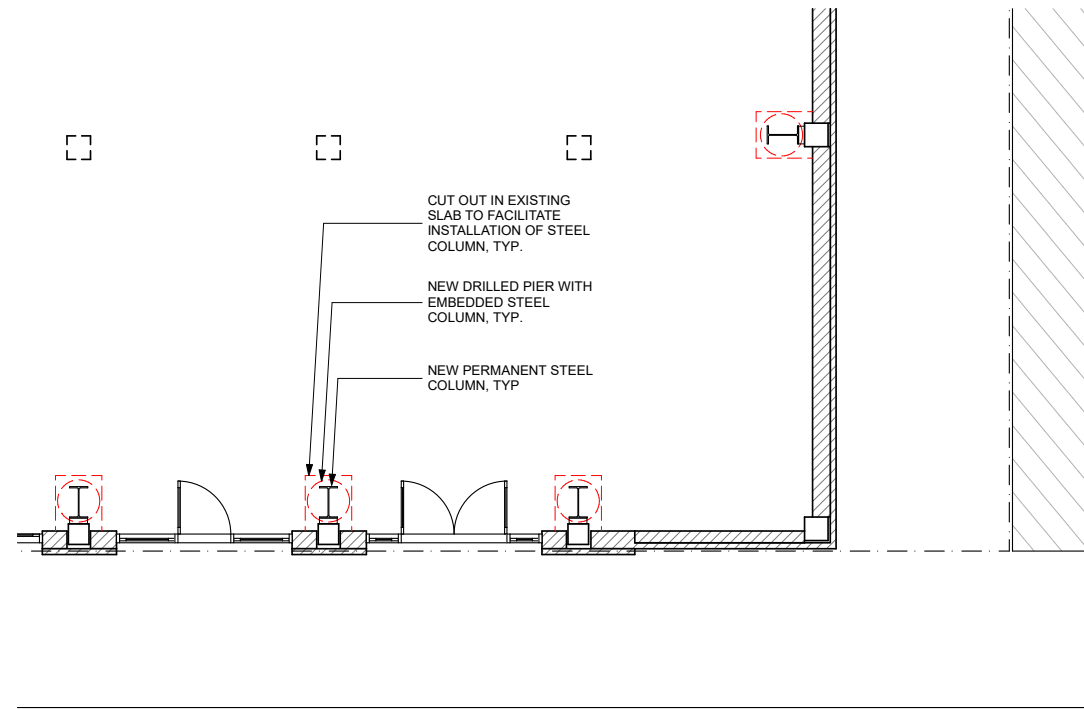


RHODE : PARTNERS

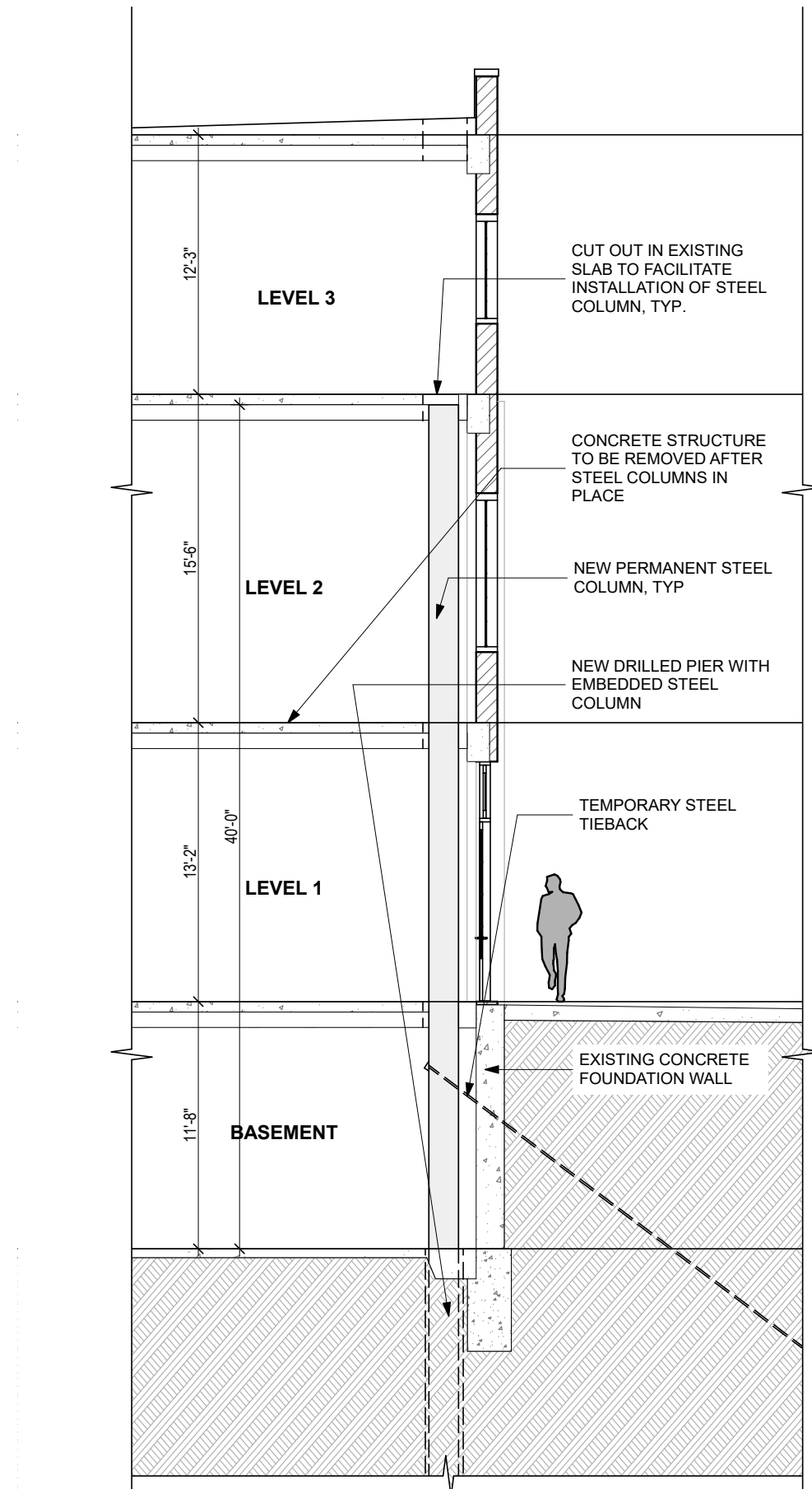
**CLAYTON
& LITTLE**

**311 West 7th Street, Austin, Texas
EXPANSION & REHABILITATION PROPOSAL**

HLC REVIEW & DISCUSSION
September 23, 2019



PARTIAL FLOOR PLAN



311 West 7th Street, Austin, Texas
EXPANSION & REHABILITATION PROPOSAL

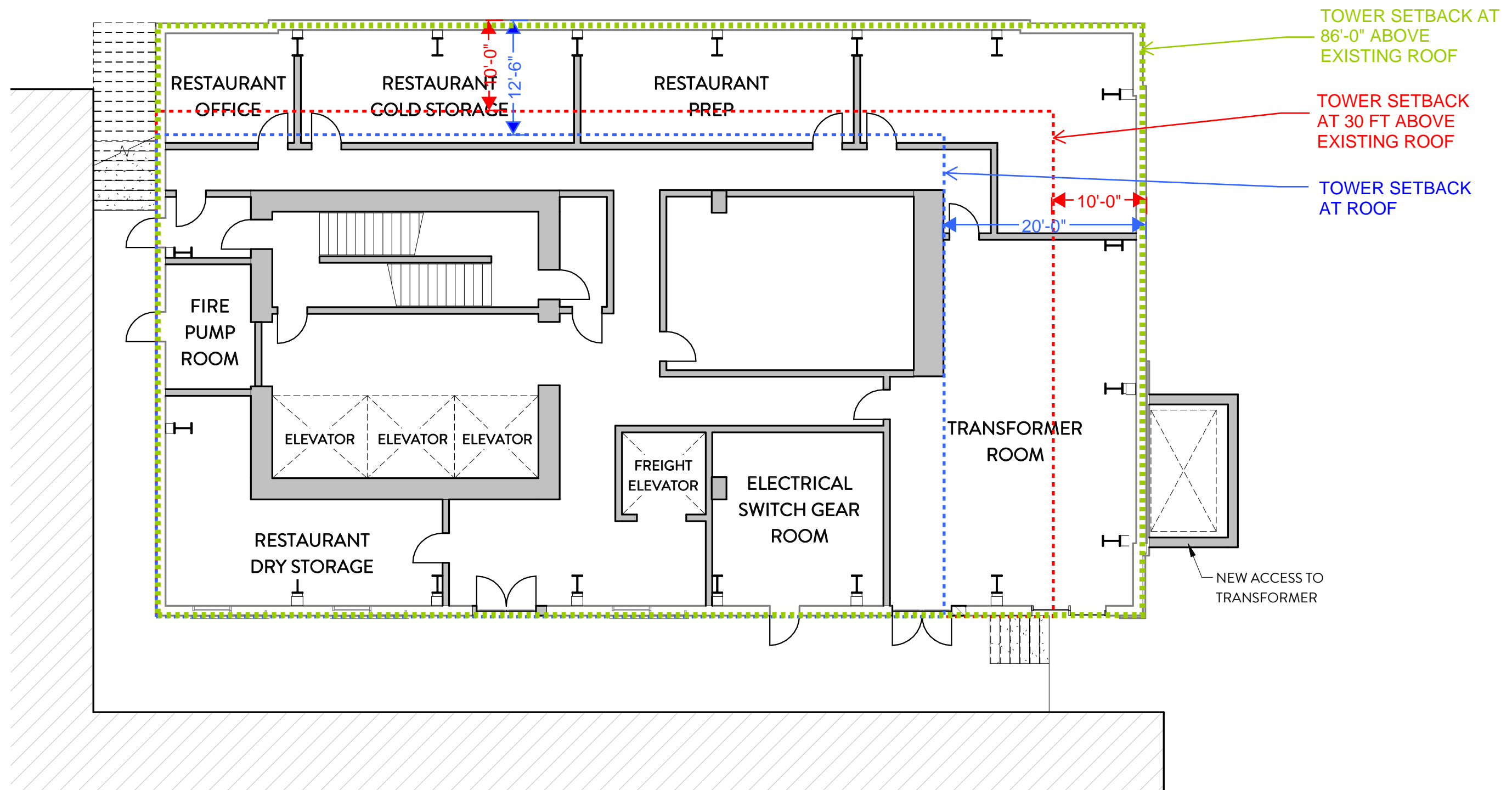
HLC REVIEW & DISCUSSION
September 23, 2019



RHODE : PARTNERS

CLAYTON
& LITTLE

EDCI
ENGINEERS



BASEMENT FLOOR PLAN
SCALE: 3/32" = 1'-0"



RHODE : PARTNERS

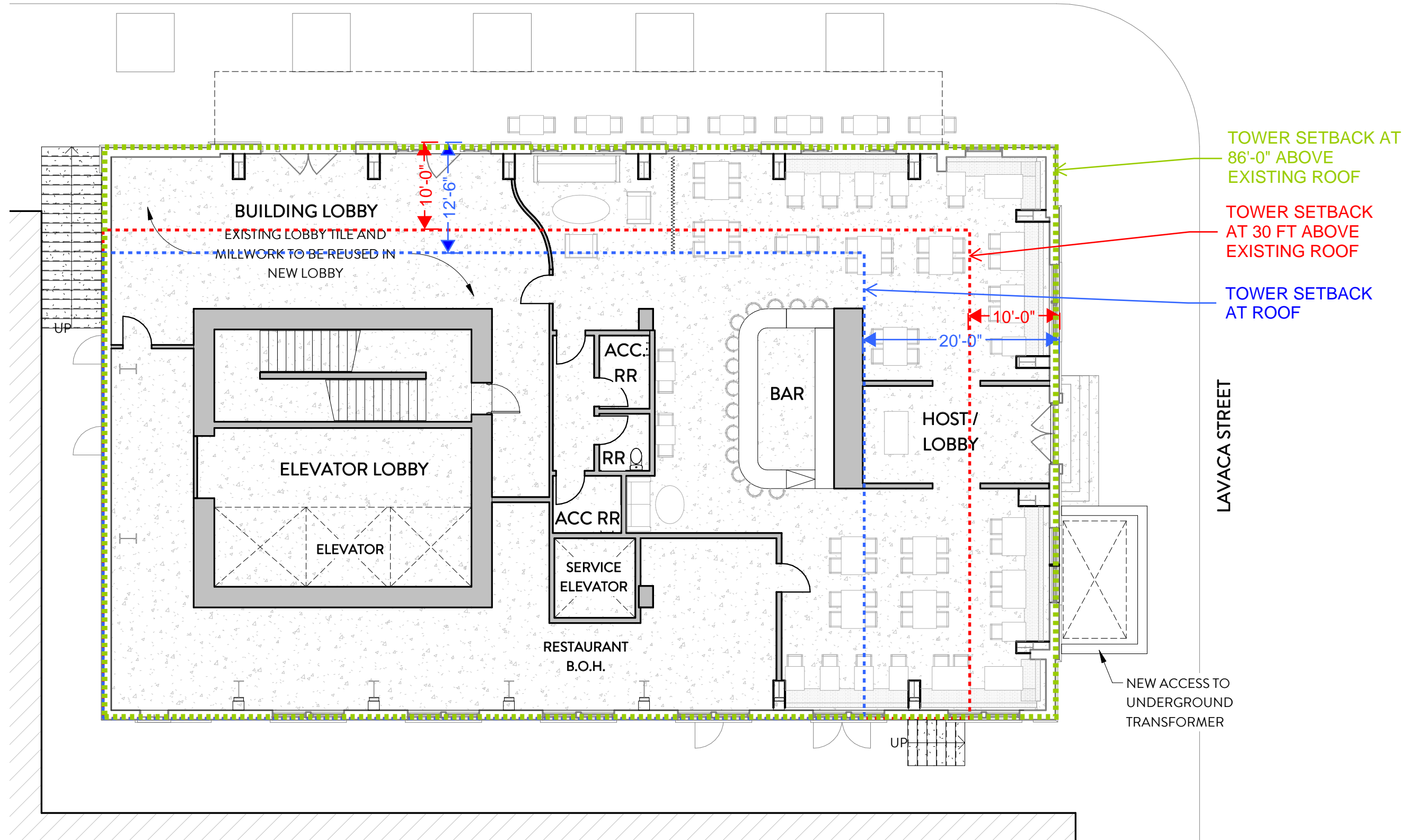
CLAYTON
& LITTLE



311 West 7th Street, Austin, Texas
EXPANSION & REHABILITATION PROPOSAL

HLC REVIEW & DISCUSSION
September 23, 2019

W. SEVENTH STREET



LEVEL 1 FLOOR PLAN
SCALE: 3/32" = 1'-0"



RHODE : PARTNERS

CLAYTON
& LITTLE



311 West 7th Street, Austin, Texas
EXPANSION & REHABILITATION PROPOSAL

HLC REVIEW & DISCUSSION
September 23, 2019