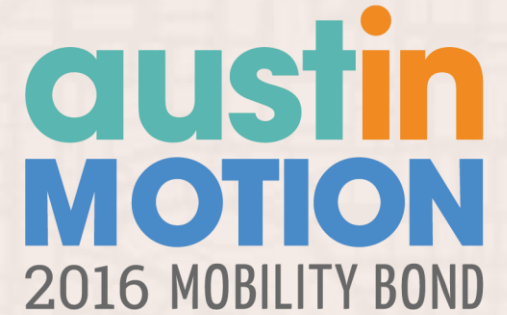
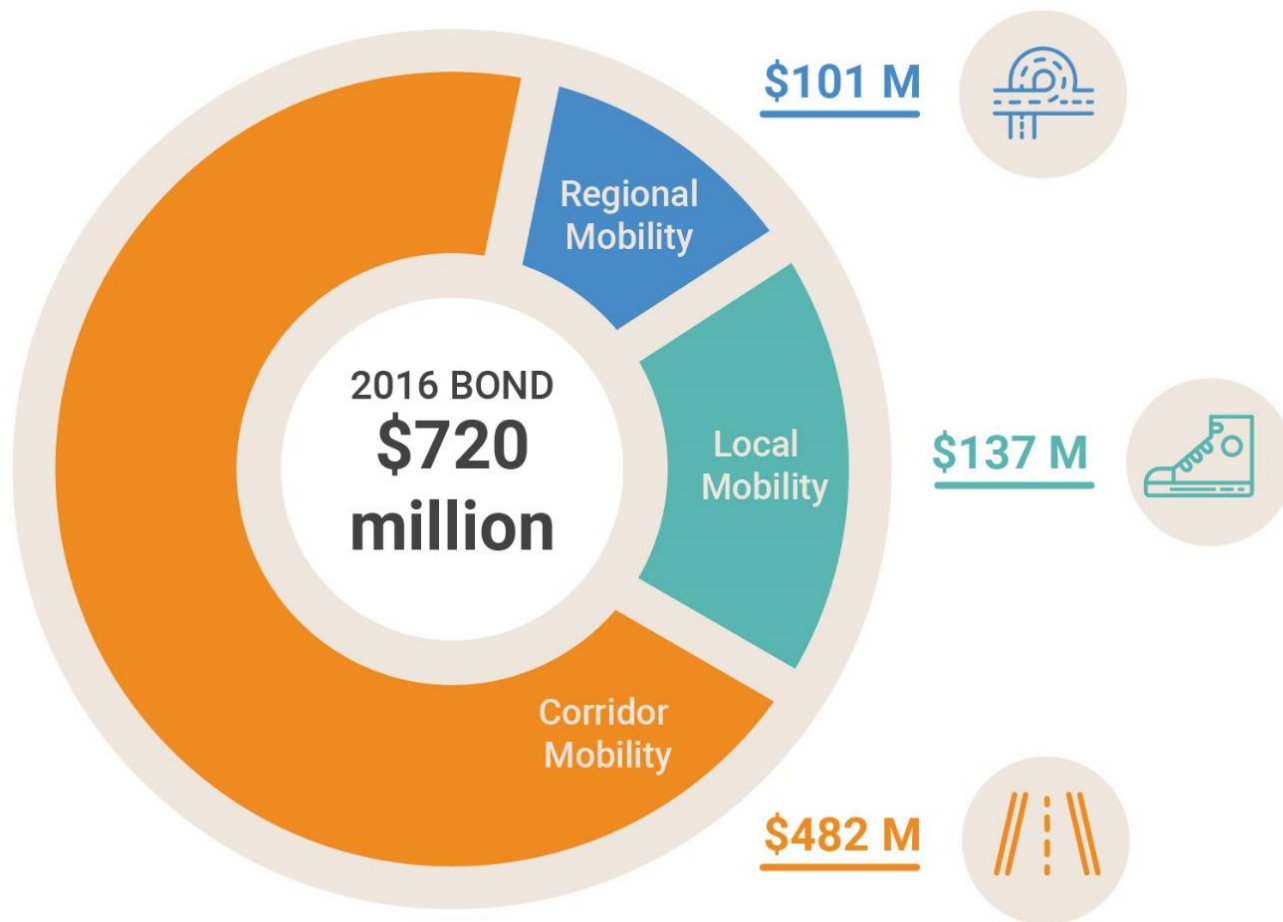


2016 MOBILITY BOND UPDATE

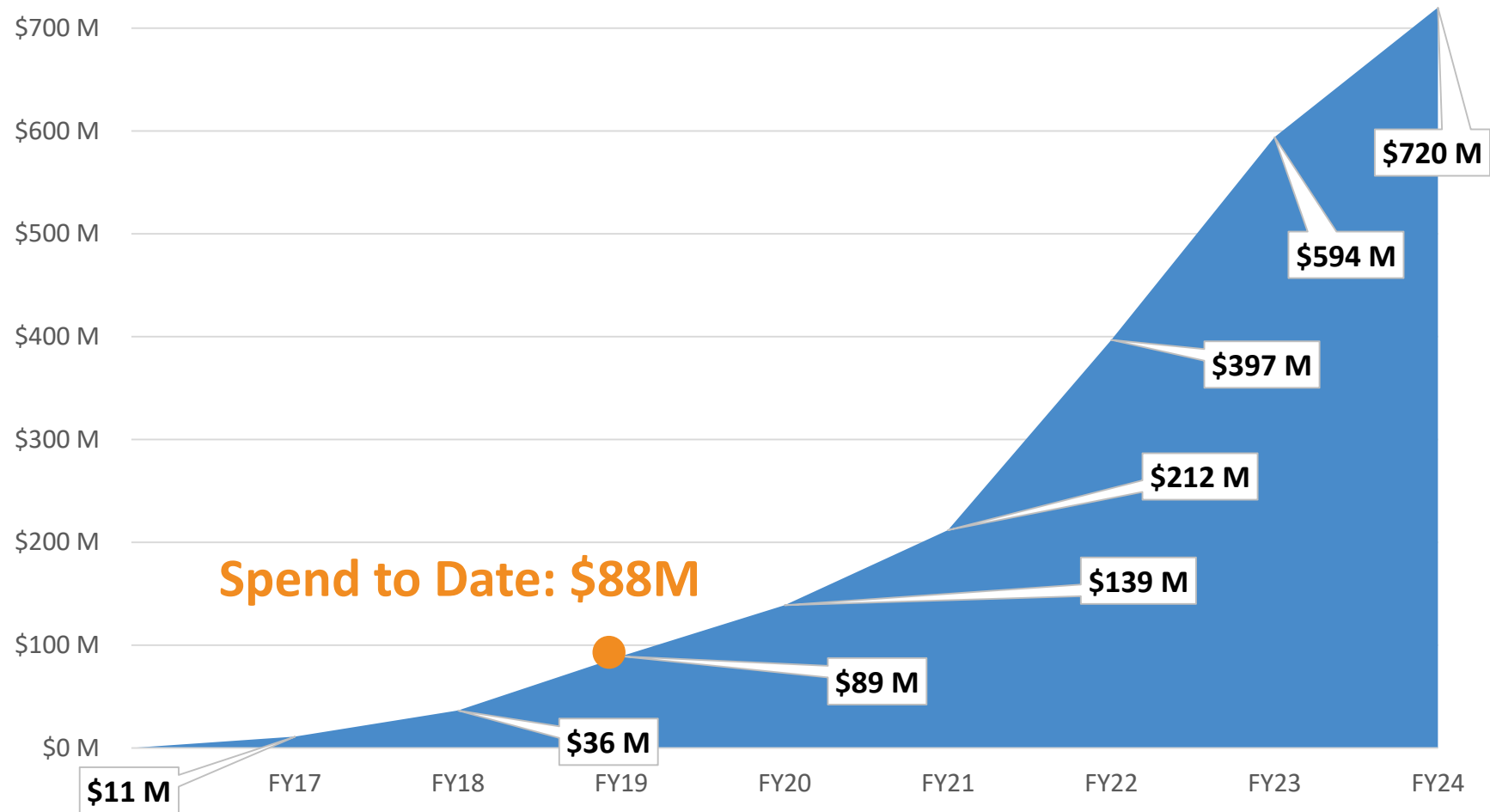
MBE/WBE ADVISORY COMMITTEE
NOVEMBER 5, 2019



2016 MOBILITY BOND PROGRAM



2016 BOND: SPENDING ON TRACK



2016 BOND: 200+ PROJECTS COMPLETED

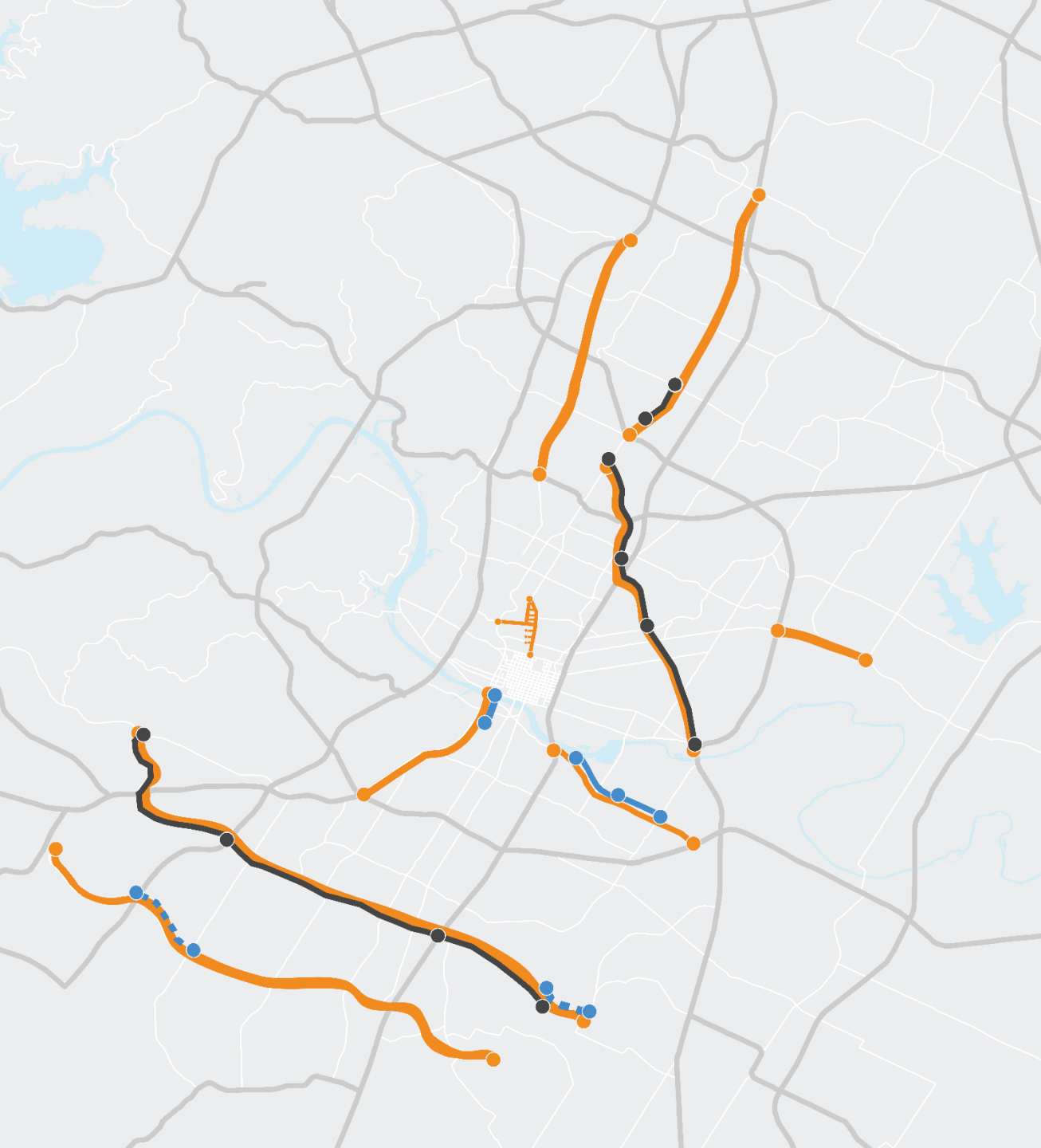
- **6** Vision Zero intersections
- **153** Sidewalk projects constructed
- **20** Bikeway projects
- **23** Safe Routes to School projects
- **7** Urban Trails and trail connectors
- Leveraging: **3 to 1 ROI** across all 2016 Programs



2016 CORRIDOR CONSTRUCTION PROGRAM

PROGRESS SINCE NOVEMBER 2016

- ☑ Updated and translated 9 Corridor Mobility Plan recommendations into investment packages
- ☑ Used robust prioritization model to develop Corridor Construction Program based on Contract With Voters
- ☑ Council adoption of Corridor Construction Program – April 2018
- ☑ Preliminary Engineering Phase: **COMPLETE**
- ☑ Council approval: Full Design/Implementation Phase – April 2019
- ☑ Final Design / Early Out Construction Phase: **IN PROGRESS**



Full Design and Construction

Corridor-wide Mobility Improvements on all 9 corridors

Enhanced Multimodal Improvements:

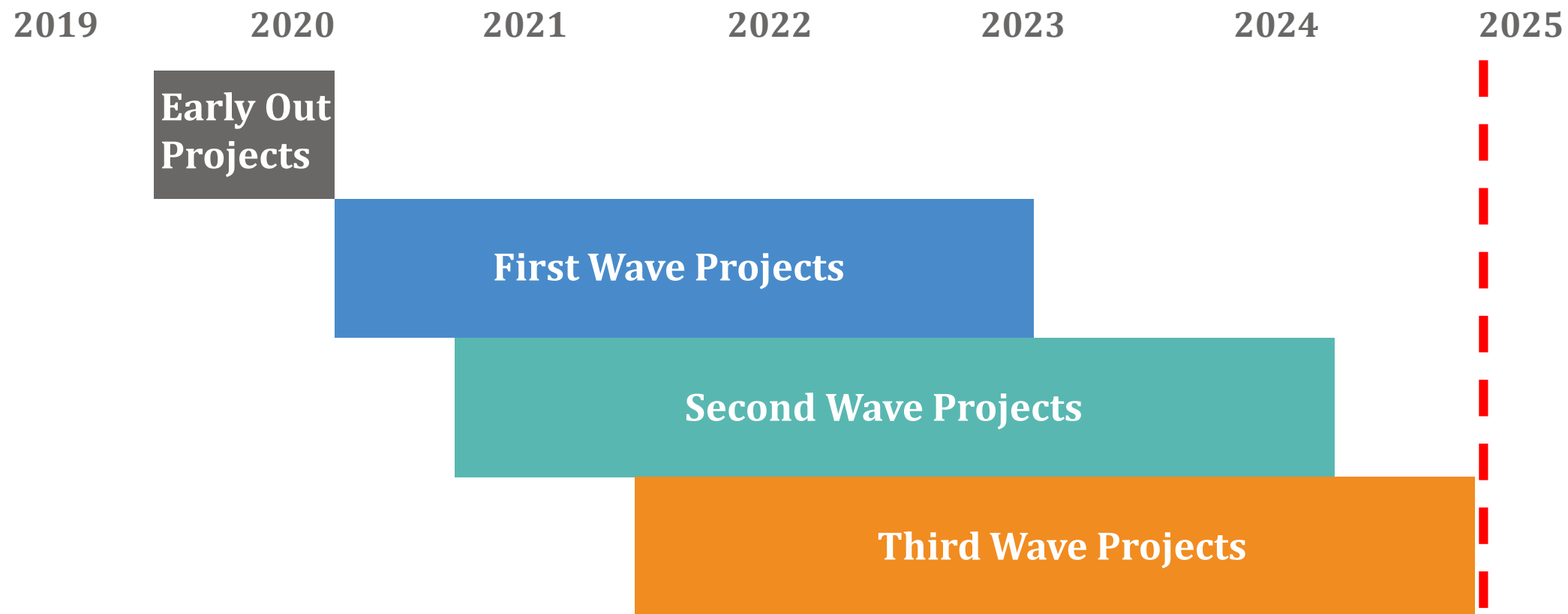
- **East Riverside** – Shore District Drive to Montopolis Drive
- **South Lamar Boulevard** – Barton Springs Road to Treadwell Street
- **William Cannon Drive** – Running Water Drive to McKinney Falls Parkway (CAMPO grant)
- **Slaughter Lane** – Mopac to Brodie Lane (CAMPO grant)

Initiate Design

Enhanced Multimodal Improvements:

- **Airport Boulevard** – North Lamar Boulevard to US 183
- **William Cannon Drive** – Southwest Parkway to Running Water Drive
- **North Lamar Boulevard** – Thurmond Street to Rundberg Lane

ACCELERATED DELIVERY



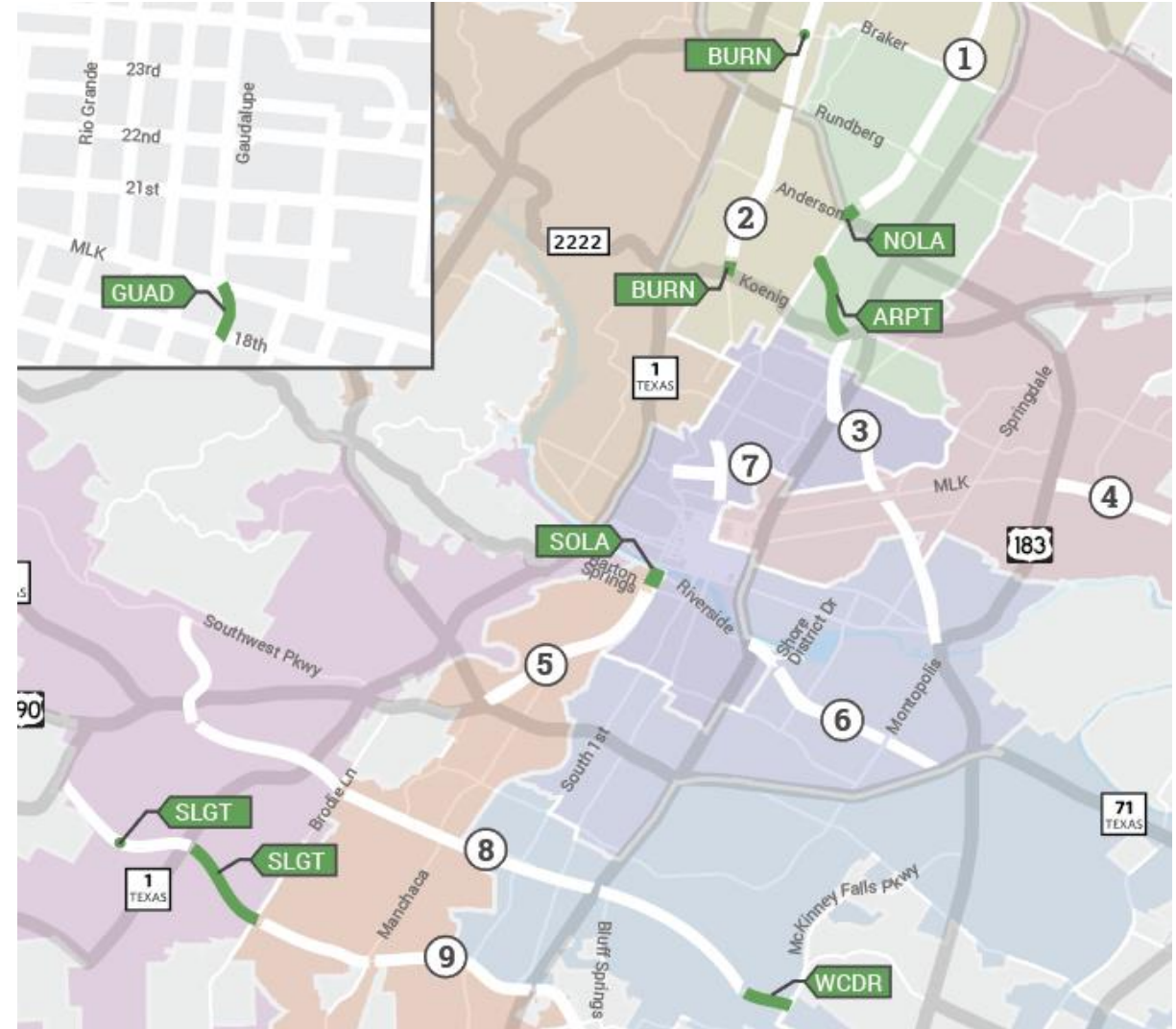
EARLY-OUT PROJECTS

- Guadalupe and Lavaca transit improvements
- West Campus sidewalk improvements
- Signal upgrades
- North Lamar intersection improvements
- Burnet Road sidewalks



FIRST WAVE PROJECTS*

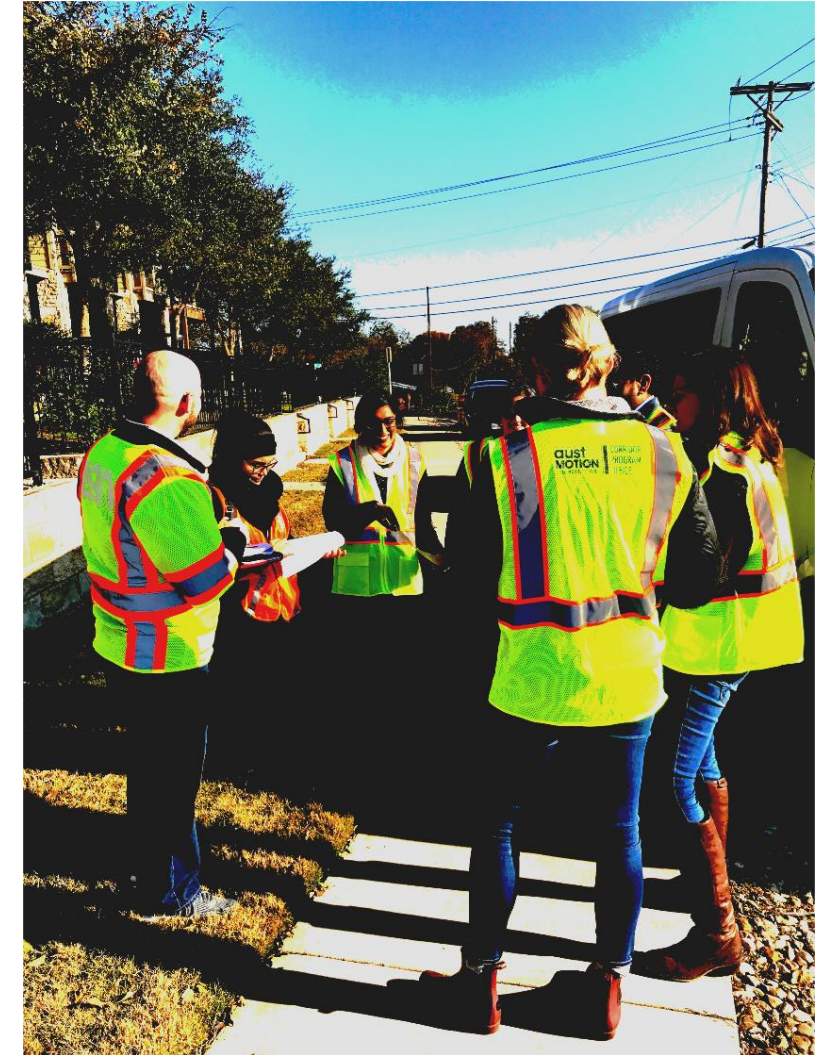
- **Burnet Road** intersections
 - Koenig, Braker Ln
- **South Lamar** enhanced multimodal improvements
- **Guadalupe** Contraflow Lane
- **North Lamar Boulevard** and **East Riverside Drive**
 - Critical Safety and Mobility Improvements
- CAMPO-funded projects
 - **William Cannon**
 - **Slaughter Lane**



*Based on prelim engineering analysis; list may be updated during final design phase

KEYS TO SUCCESS

- **Executive level** focus and priority
- **Integrated program management** approach
 - City institutional knowledge + **Consultant** expertise
 - **Co-location** = enhanced collaboration, integration
- **Aggressive Risk, Schedule, Cost mgmt**
- **Robust coordination:** inter-dept., inter-agency
- **Accelerated delivery** resource teams
- **Focus on outcomes:** Performance Mgmt Plan
- **Partnerships & Leveraging opportunities**



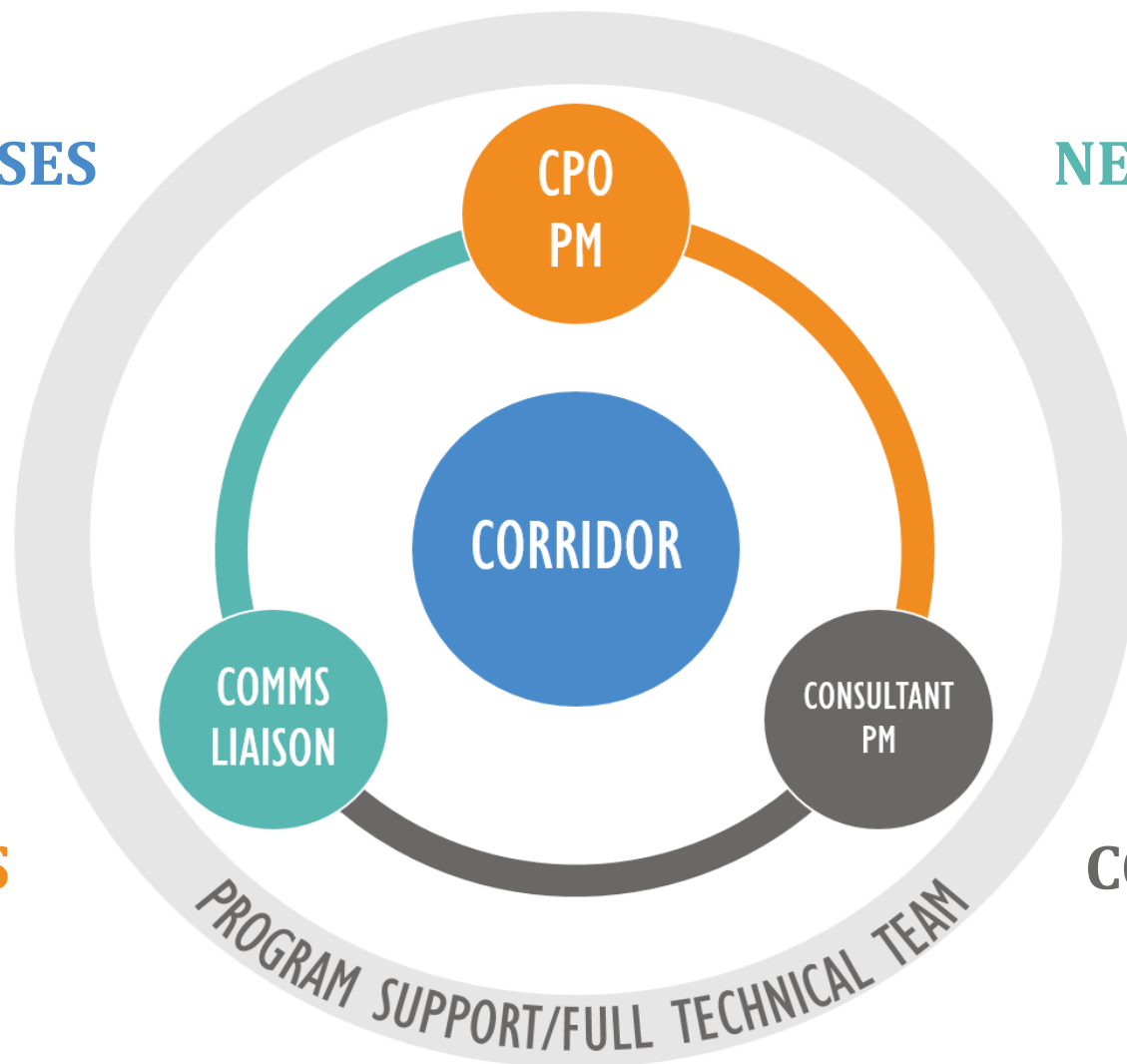
CORRIDOR AMBASSADOR APPROACH

BUSINESSES

NEIGHBORHOODS

SCHOOLS

COMMUNITY ORGS



CORRIDORS 4 COMPLETE COMMUNITIES



How might we leverage 2016 Bond corridor investments to support community outcomes and complete communities as per the Contract With Voters?

MBE/WBE OUTREACH

- MBE/WBE Outreach Program is essential to achieving the goals of the Corridor Construction Program.
 - Track MBE/WBE firm participation
 - Support increasing availability and capacity of City-certified MBE/WBE firms
 - Encourage the creation of solicitation opportunities that target availability and capability of City-certified MBE/WBE firms

ANTICIPATED OUTCOMES

10-15% Mode Shift



Avg 25% Reduction in Vehicular Delay

15%+ Reduction in Crashes

Complete Streets/Communities

QUESTIONS?