

A photograph of a building facade completely covered in a thick layer of green ivy. The ivy has many small, bright yellow flowers scattered throughout. In the center of the image, a window with a dark brown frame is visible, partially obscured by the foliage. The window has multiple panes, and some red flowers are visible inside. The overall scene is lush and green.

**Austin Environmental Commission**

***Alternatives to Toxic Chemicals in  
Building Products***

**Paul Robbins  
November 20, 2019**



# Pathway 1: Chemicals in Air

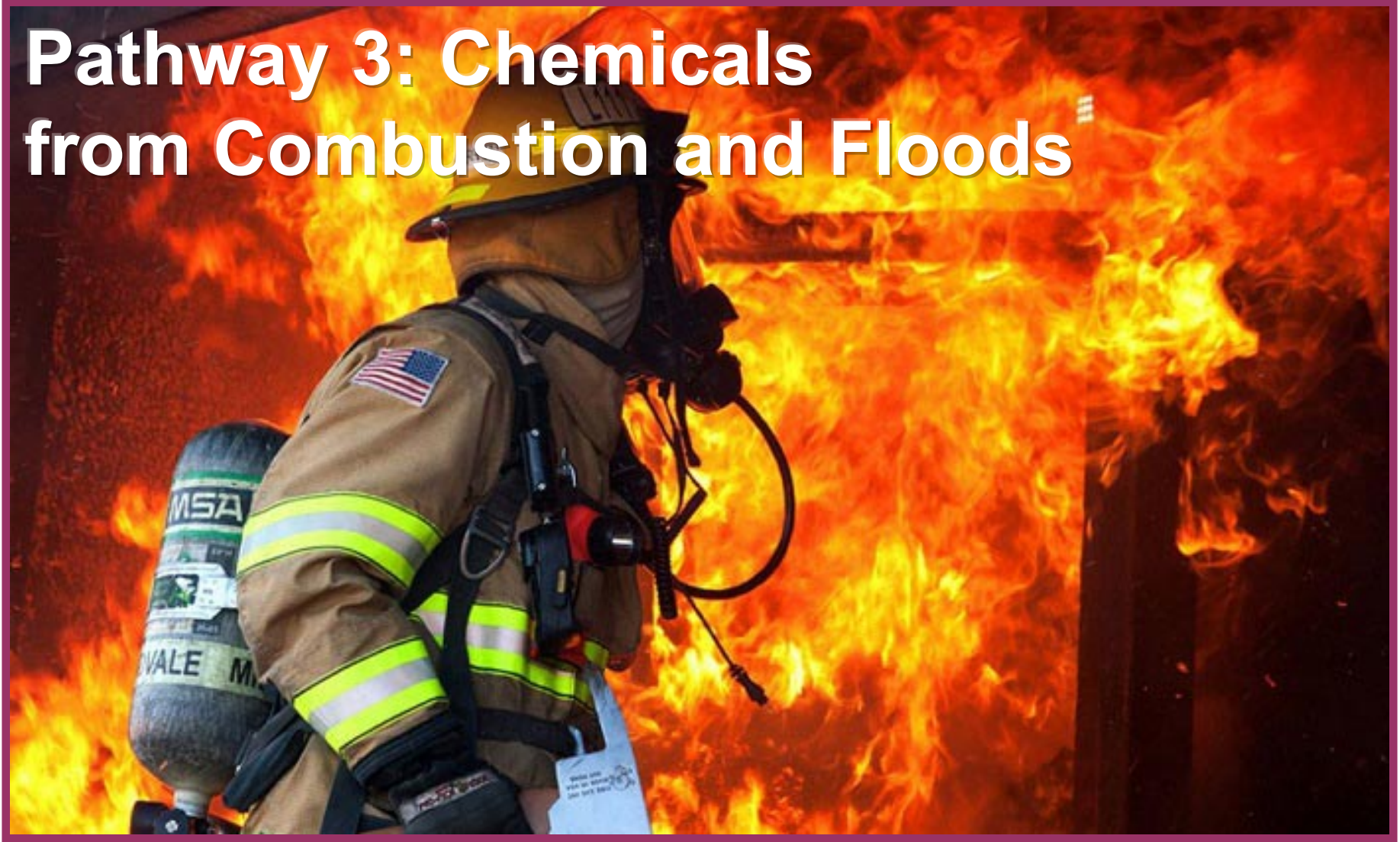


# Pathway 2: Chemicals in Dust





# Pathway 3: Chemicals from Combustion and Floods



## Pathway 4: Chemicals from Contact



# Pathway 5: Chemicals in Water





# Pathway 6: Chemicals from Landfill Fire



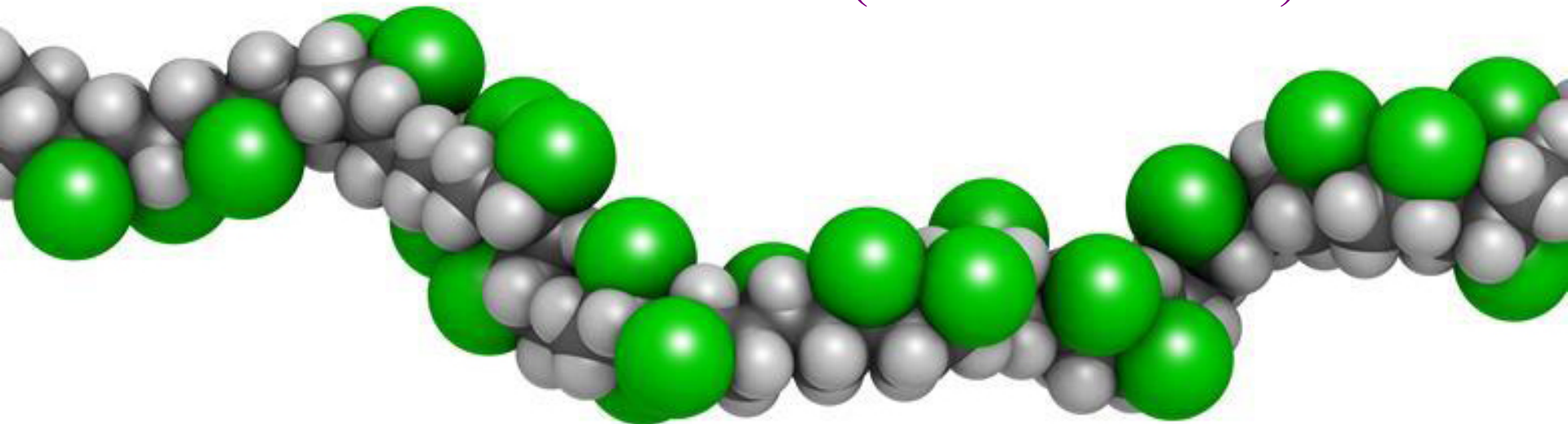
# Pathway 7: Chemical Emissions from Chemical Factories

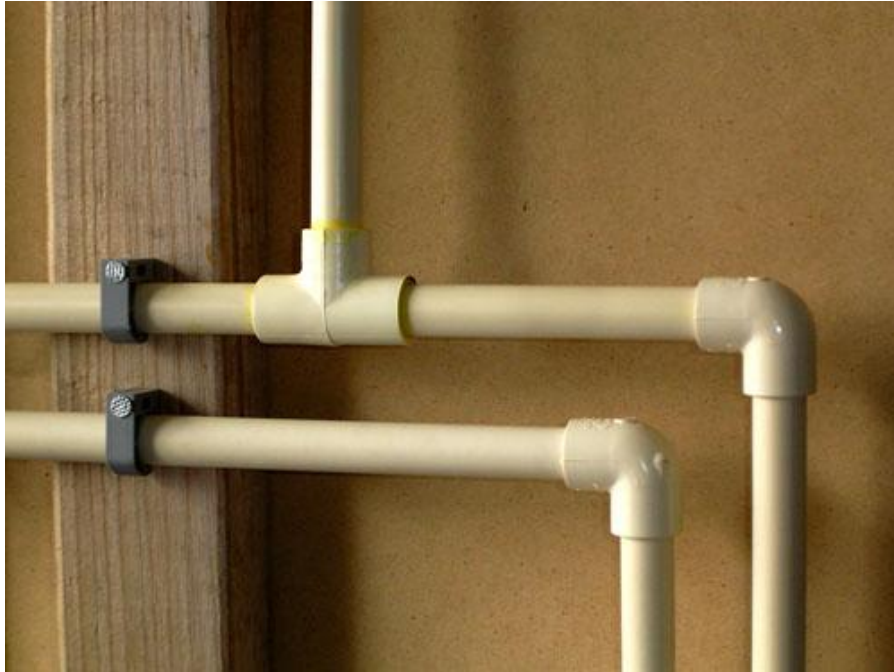




# PVC (Polyvinyl Chloride)

- Developmental toxin
  - Respiratory toxin
- Internal organ toxicant
- Highly Carcinogenic when burned (dioxin emissions)
  - Potent Endocrine Disrupting Chemical when burned (dioxin emissions)





- Blinds & Curtains
- Shower Curtains
- Carpet Backing
- Fence Material
- Sheet Flooring
- Plumbing Pipe
- Siding
- Wallpaper
- Windows & Doors





*Chlorine fire and leak and Louisiana chemical factory*



## Perfluorocarbons (Teflon)

- Carcinogen
- Developmental toxin
- Reproductive toxin
- Internal organ toxicant
- Persistent Bioaccumulative Toxin





- Carpet Coatings
- Countertop Coatings
  - Paint
- Caulking & Sealants
  - Adhesives
- Window gliders
- Plumbing Tape
- Roof coatings
- Solar module coatings



## Antimicrobials

21 Separate Chemicals  
including Triclosan,  
Formaldehyde, Silver  
Nanoparticles, and OBPA

Aquatic Toxicant, Carcinogen, Developmental Toxicant,  
Mutagen, Endocrine Disruptor, Mammalian Toxicant,  
Eye and Skin Irritation, Internal Organ Toxicant,  
Neurotoxin, Persistent Bioaccumulative Toxin,  
Reproductive Toxicant, Asthmagen and Respiratory  
Sensitizer, Skin Sensitizer





- Carpets
- Concrete
- Countertops
- Door handles
- Light switches & covers



- Paints
- Tile
- Toilets & toilet seats
- Wallpaper
- Wood products



***Antibiotic Resistant  
Super Bugs***



# Wallboard w/ Coal Ash

- Arsenic
- Cadmium
- Lead
- Mercury

All are Carcinogenic,  
Developmental Toxins, Endocrine  
Disruptors, Internal Organ Toxins,  
Neurotoxins, Reproductive Toxins,  
and Persistent Bioaccumulative  
Toxins





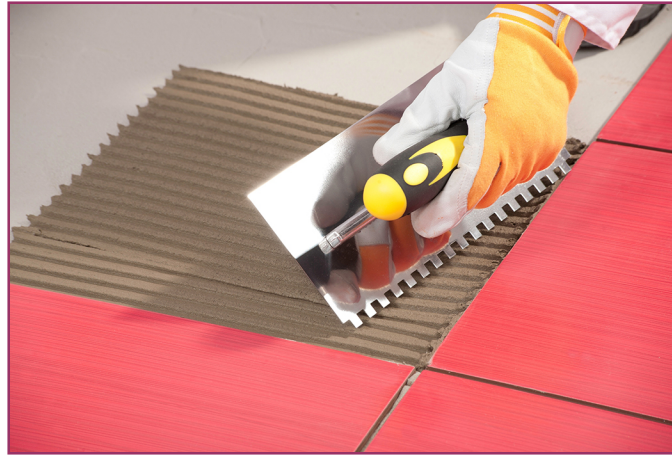
# Paint

- Alkylphenol Ethoxylates (APEs)
- Ammonia
- Antifreeze
- Biocides
- Volatile Organic Compounds (VOCs)

Carcinogenic, Developmental Toxin, Endocrine Disruptor,  
Eye and Skin Irritant, Internal Organ Damage, Neurotoxin,  
Persistent Bioaccumulative Toxins, Reproductive Toxin,  
Respiratory Irritant



# Flooring



- Over 70% in 2016 was carpet or PVC
- Carpet often has antimicrobials, PVC or styrene backing, coal ash fillers with heavy metals, flame retardants, phthalate plasticizers, organotin stabilizers, VOC emissions, and Teflon stain resisters
- PVC often has phthalate plasticizers, organotin stabilizers, and VOC emissions
- Imported glazed tile can contain lead pigments
- Wood floors finished onsite have VOC emissions



SM

AUSTIN ENERGY

**GREEN  
BUILDING**





# **Austin Environmental Board advise the Austin City Council:**

1) Austin Energy Green Building program's revised standards should ban toxic building materials in new and remodeled homes when cost-effective alternatives exist.

2) The Green Building Program's revised standards aggressively encourage the installation of non-toxic and less-toxic alternatives through its voluntary point system.





**For More Information, contact:  
Paul Robbins • (512) 447-8712**