

**RULE NO.: R161-19.23**

**ADOPTION DATE: November 25, 2019**

**NOTICE OF RULE ADOPTION**

NOV 25 2019 AM 10:21

By: Jorge L. Morales, P.E., CFM, Director  
Watershed Protection Department

The Director of the Watershed Protection Department has adopted the following rule. Notice of the proposed rule was posted on October 8, 2019. Public comment on the proposed rule was solicited in the October 8, 2019 notice. This notice is issued under Chapter 1-2 of the City Code. The adoption of a rule may be appealed to the City Manager in accordance with Section 1-2-10 of the City Code as explained below.

A copy of the complete text of the adopted rule is available for public inspection and copying at the following locations. Copies may be purchased at the locations at a cost of ten cents per page:

Watershed Protection Department, located at 505 Barton Springs Road, Suite 1200, Austin, TX, 78704; and

Office of the City Clerk, City Hall, located at 301 West 2nd Street, Austin, Texas.

**EFFECTIVE DATE OF ADOPTED RULE**

A rule adopted by this notice is effective on November 25, 2019.

## **TEXT OF ADOPTED RULE**

R161-19.23: Revises the Standards Manual as follows:

- Standard Detail 508S-4 – Repeals and replaces Standard Detail 508S-4 to clarify drawings, to add a detail for 5' inlets, and to renumber existing drawings.

## **COMMENTS AND CHANGES FROM PROPOSED RULE**

No comments were received, and no changes were made.

## **AUTHORITY FOR ADOPTION OF RULE**

The authority and procedure for the adoption of a rule to assist in the implementation, administration, or enforcement of a provision of the City Code is established in Chapter 1-2 of the City Code. The authority to regulate design and construction of drainage facilities and improvements is established in Section 25-7-151 of the City Code.

## **APPEAL OF ADOPTED RULE TO CITY MANAGER**

A person may appeal the adoption of a rule to the City Manager. **AN APPEAL MUST BE FILED WITH THE CITY CLERK NOT LATER THAN THE 30TH DAY AFTER THE DATE THIS NOTICE OF RULE ADOPTION IS POSTED. THE POSTING DATE IS NOTED ON THE FIRST PAGE OF THIS NOTICE.** If the 30th day is a Saturday, Sunday, or official city holiday, an appeal may be filed on the next day which is not a Saturday, Sunday, or official city holiday.

An adopted rule may be appealed by filing a written statement with the City Clerk. A person who appeals a rule must (1) provide the person's name, mailing address, and telephone number; (2) identify the rule being appealed; and (3) include a statement of specific reasons why the rule should be modified or withdrawn.

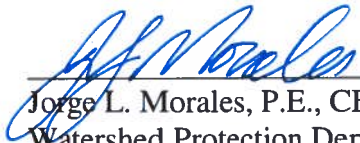
Notice that an appeal was filed and will be posted by the city clerk. A copy of the appeal will be provided to the City Council. An adopted rule will not be enforced pending the City Manager's decision. The City Manager may affirm, modify, or withdraw an adopted rule. If the City Manager does not act on an appeal on or before the 60th day after the date the notice of rule adoption is posted, the rule is withdrawn. Notice of the City Manager's decision on an appeal will be posted by the city clerk and provided to the City Council.

On or before the 16th day after the city clerk posts notice of the City Manager's decision, the City Manager may reconsider the decision on an appeal. Not later than the 31st day after giving written notice of an intent to reconsider, the City manager shall make a decision.


## **CERTIFICATION BY CITY ATTORNEY**

By signing this Notice of Rule Adoption (R161-19.23), the City Attorney certifies that the City Attorney has reviewed the rule and finds that adoption of the rule is a valid exercise of the Director's administrative authority.

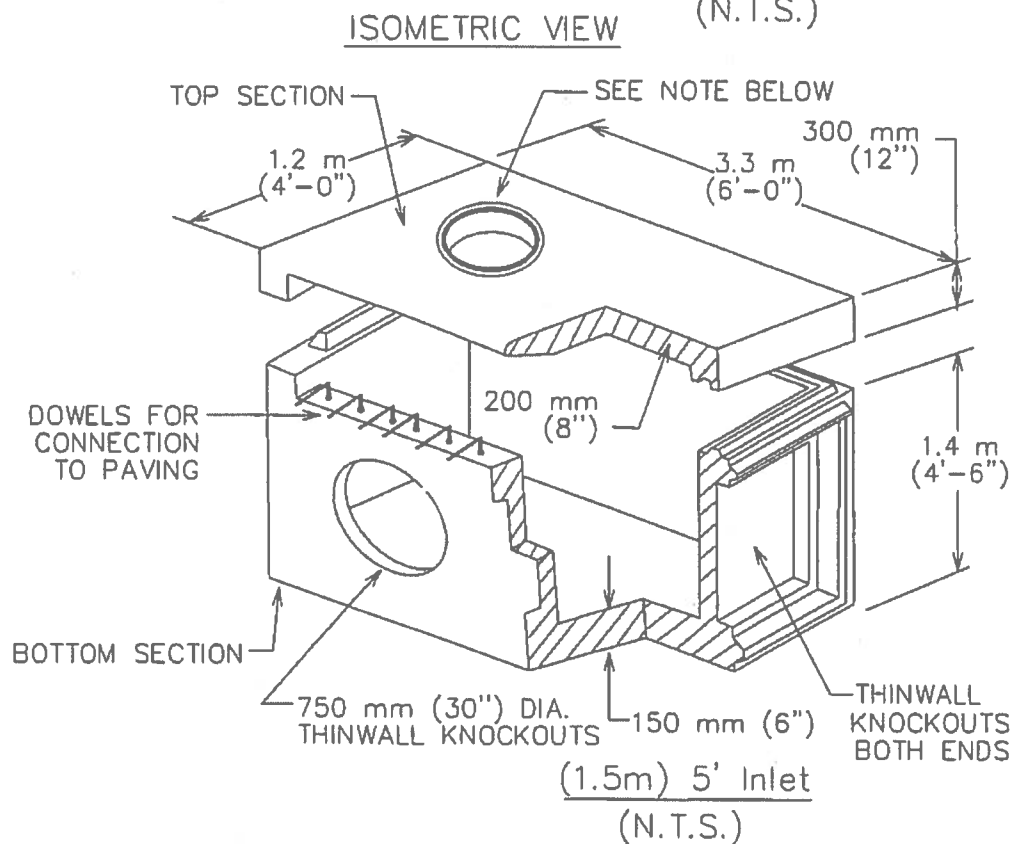
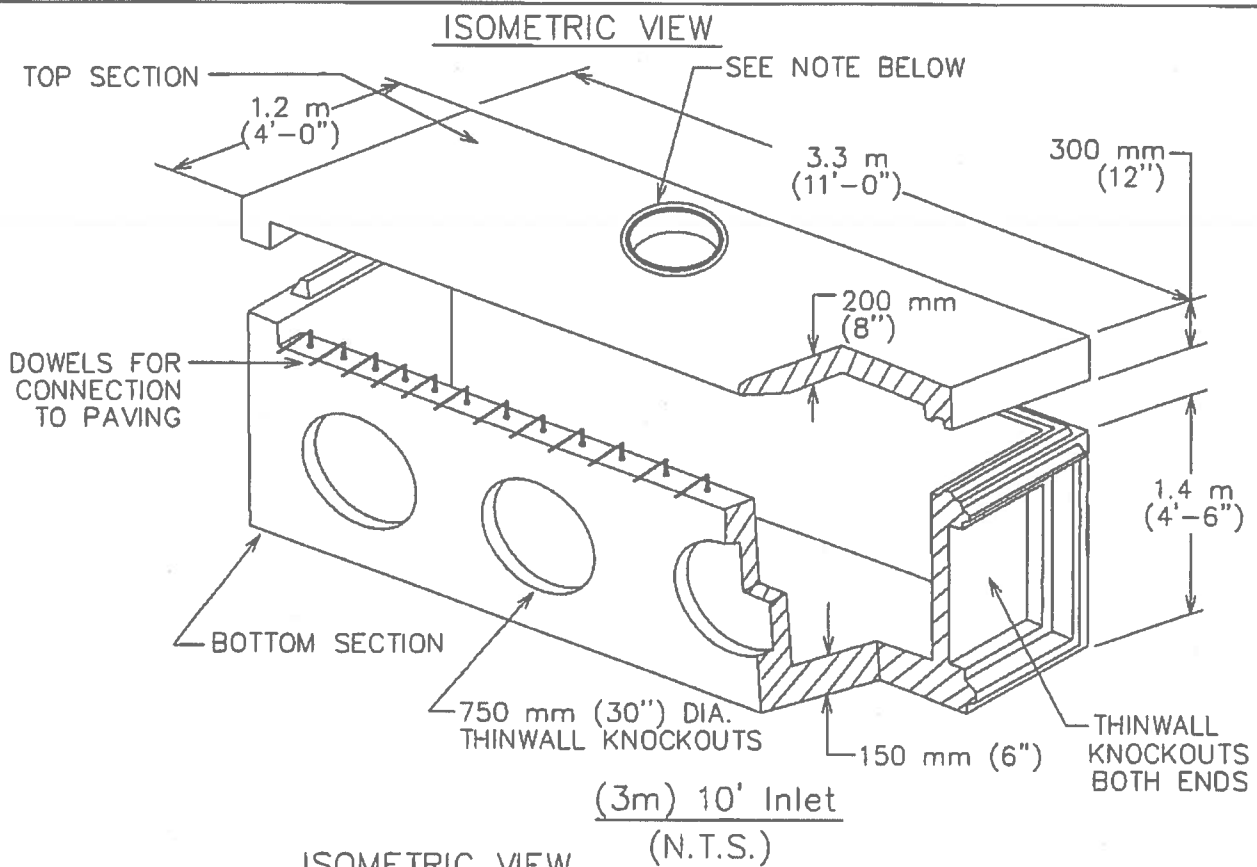
## **REVIEWED AND APPROVED**

  
\_\_\_\_\_  
Jorge L. Morales, P.E., CFM, Director  
Watershed Protection Department

Date: 11/13/19

  
\_\_\_\_\_  
Anne Morgan  
City Attorney

Date: 11/14/19



NOTE:  
MANHOLE FRAME  
AND COVER  
SHALL BE IN  
ACCORDANCE WITH  
CITY OF AUSTIN  
STANDARD 503S-1

CITY OF AUSTIN  
WATERSHED PROTECTION DEPARTMENT

CURB INLET 1.5m(5') AND 3m(10') PRECAST  
TYPE 1 OR TYPE 1-R

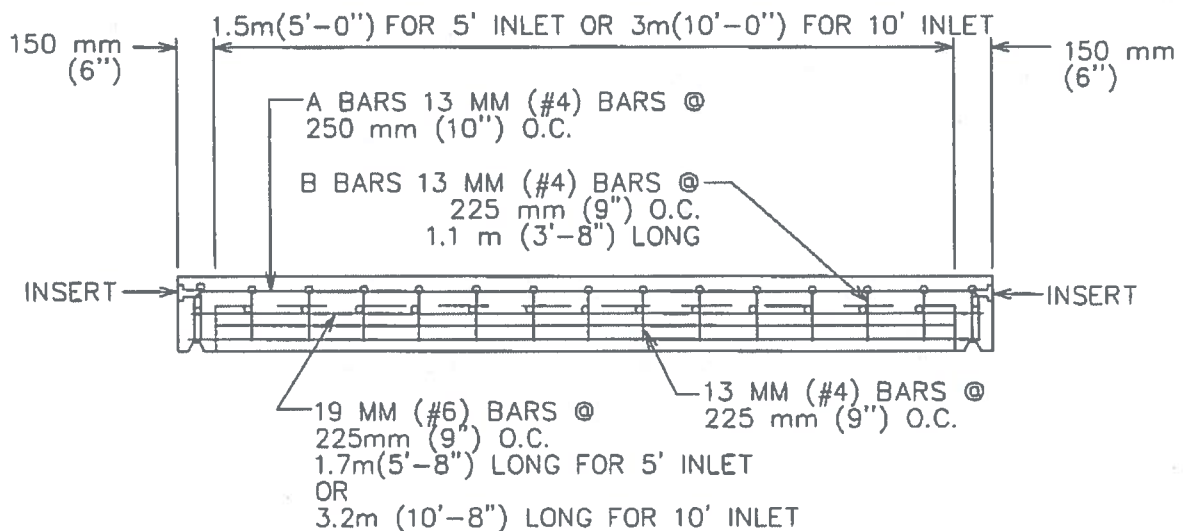
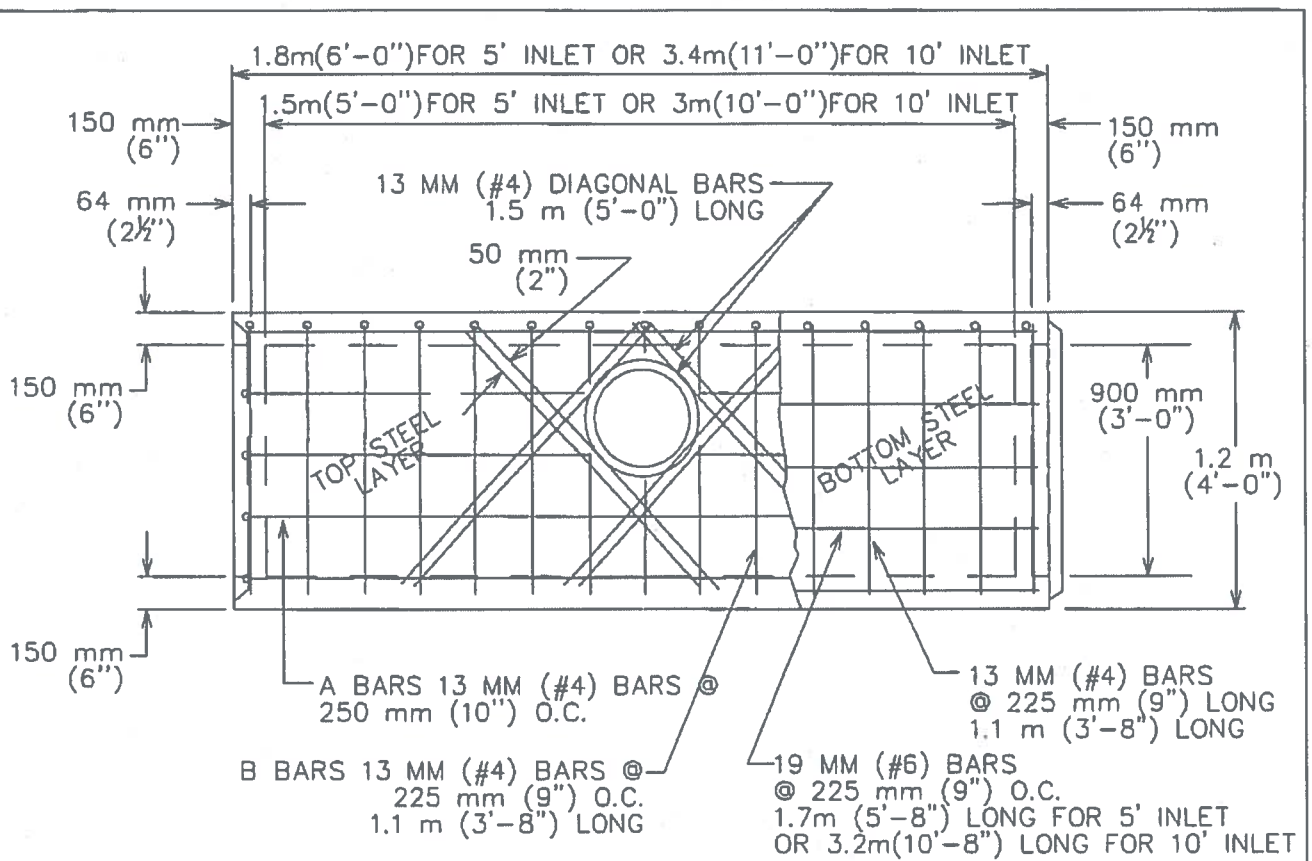
THE ARCHITECT/ENGINEER ASSUMES  
RESPONSIBILITY FOR APPROPRIATE USE  
OF THIS STANDARD.

STANDARD NO.

508S-4

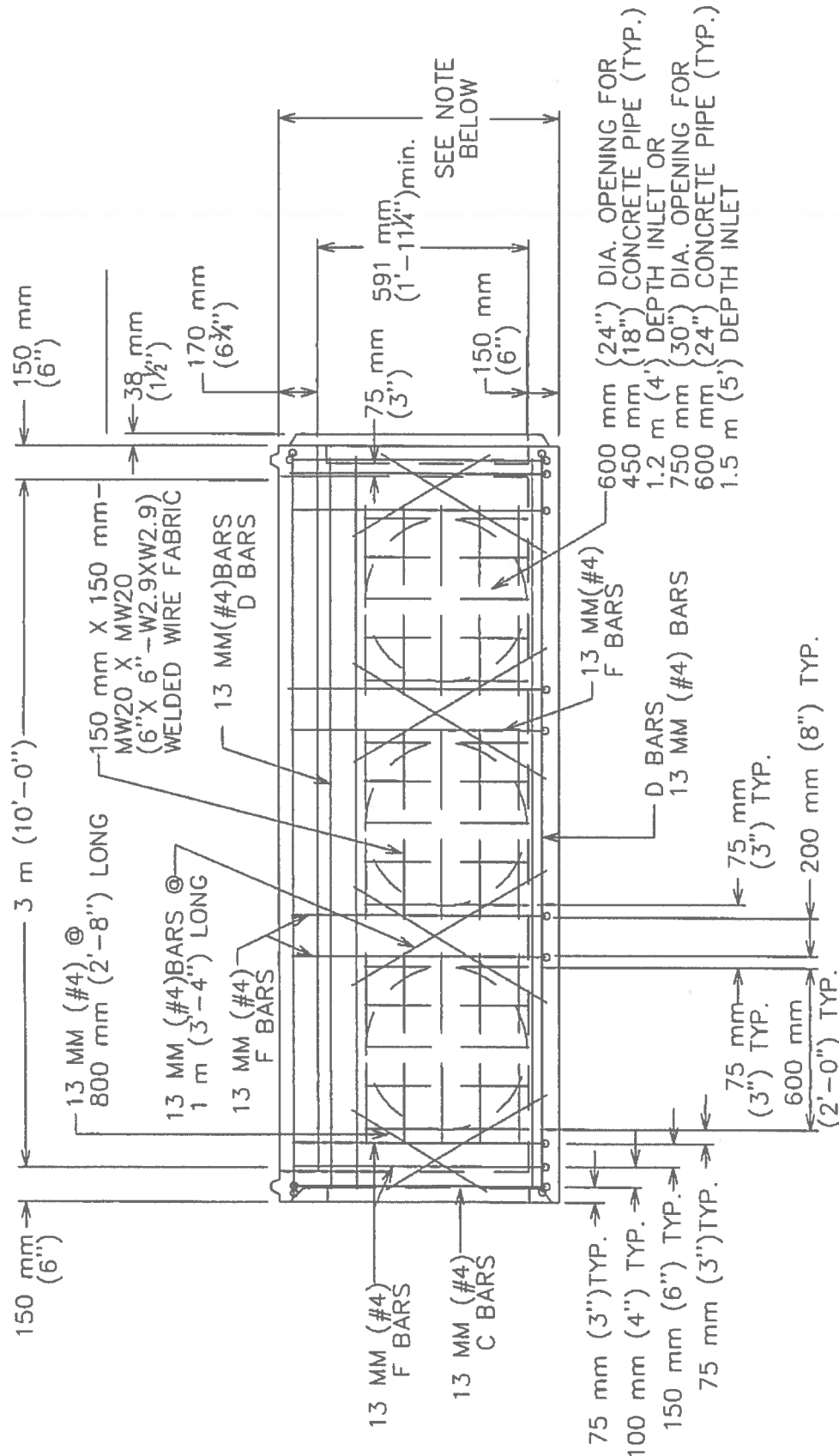
1 OF 7

ADOPTED



INLET TOP  
FOR 1.5m(5') AND 3m(10') INLET  
(N.T.S.)

CITY OF AUSTIN WATERSHED PROTECTION DEPARTMENT	CURB INLET 1.5m(5') AND 3m(10') PRECAST TYPE 1 OR TYPE 1-R	
_____ ADOPTED	THE ARCHITECT/ENGINEER ASSUMES RESPONSIBILITY FOR APPROPRIATE USE OF THIS STANDARD.	STANDARD NO. <b>508S-4</b> 2 OF 7



NOTE:

900 mm (3'-0") FOR 1.2 m (4') DEPTH INLET

1.2 m (4'-0") FOR 1.5 m (5') DEPTH INLET

(3m) 10' INLET  
(N.T.S.)

CITY OF AUSTIN  
WATERSHED PROTECTION DEPARTMENT

CURB INLET 1.5m(5') AND 3m(10') PRECAST  
TYPE 1 OR TYPE 1-R

THE ARCHITECT/ENGINEER ASSUMES  
RESPONSIBILITY FOR APPROPRIATE USE  
OF THIS STANDARD.

STANDARD NO.  
**508S-4**  
3 OF 7

ADOPTED

150 mm X 150 mm-MW20 X MW20  
(6"X 6"-W2.9XW2.9)  
WELDED WIRE FABRIC

150 mm (6")  
1.5m (5'-0")  
150 mm (6")

38 mm (1 1/2")

170 mm (6 3/4")

13 MM(#4) @  
800 mm  
(2'-8") LONG

75 mm (3")  
591 mm (1'-11 1/4") min.

SEE NOTE  
BELOW

C BARS  
13 MM(#4) BARS

13 MM (#4)  
F BARS

D BARS  
13 MM (#4) BARS

600 mm (24") DIA. OPENING FOR  
450 mm (18") CONCRETE PIPE (TYP.) FOR  
1.2 m (4') DEPTH INLET  
OR

750 mm (30") DIA. OPENING FOR  
600 mm (24") CONCRETE PIPE (TYP.) FOR  
1.5 m (5') DEPTH INLET

NOTE:

900 mm (3'-0") FOR 1.2 m (4') DEPTH INLET  
1.2 m (4'-0") FOR 1.5 m (5') DEPTH INLET

(1.5m) 5' Inlet  
(N.T.S.)

CITY OF AUSTIN  
WATERSHED PROTECTION DEPARTMENT

CURB INLET 1.5m(5') AND 3m(10') PRECAST  
TYPE 1 OR TYPE 1-R

THE ARCHITECT/ENGINEER ASSUMES  
RESPONSIBILITY FOR APPROPRIATE USE  
OF THIS STANDARD.

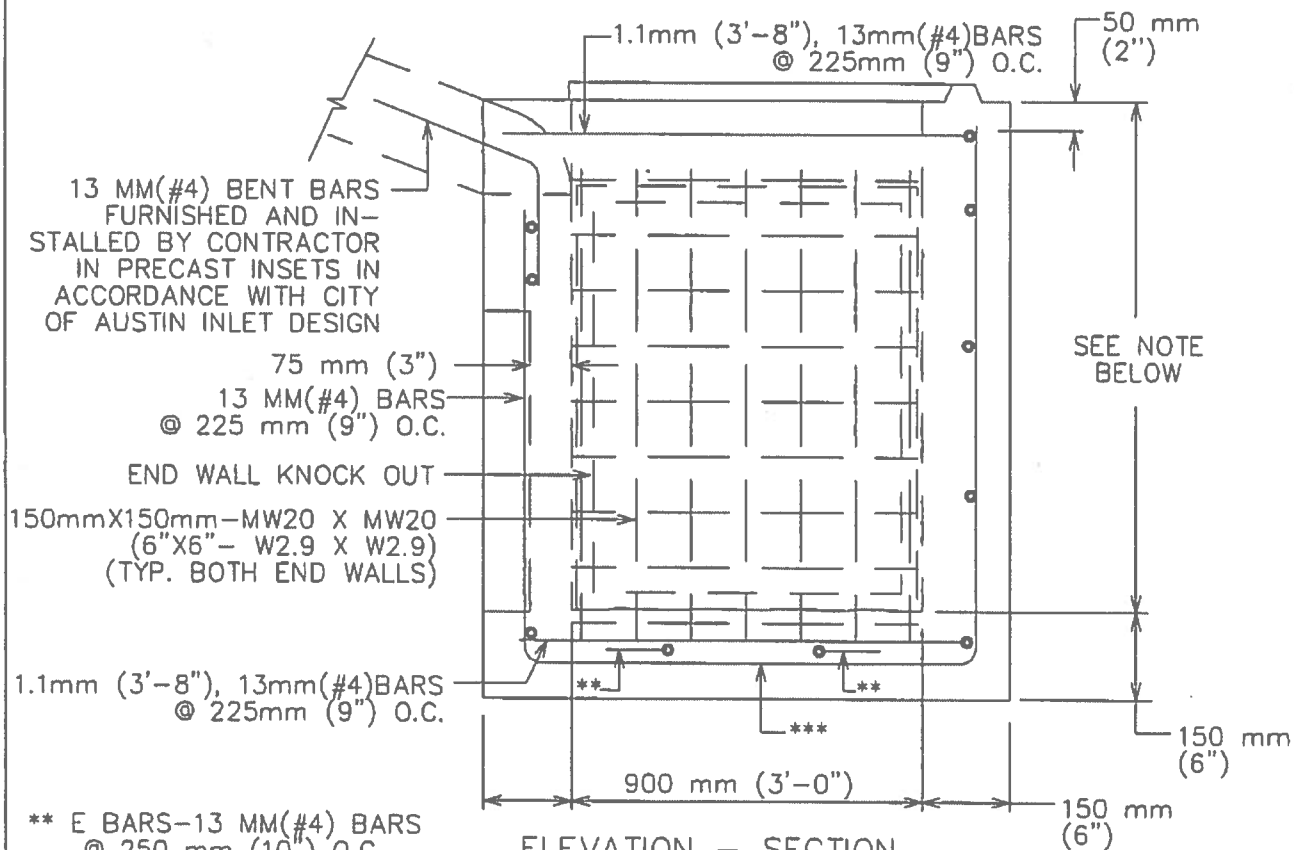
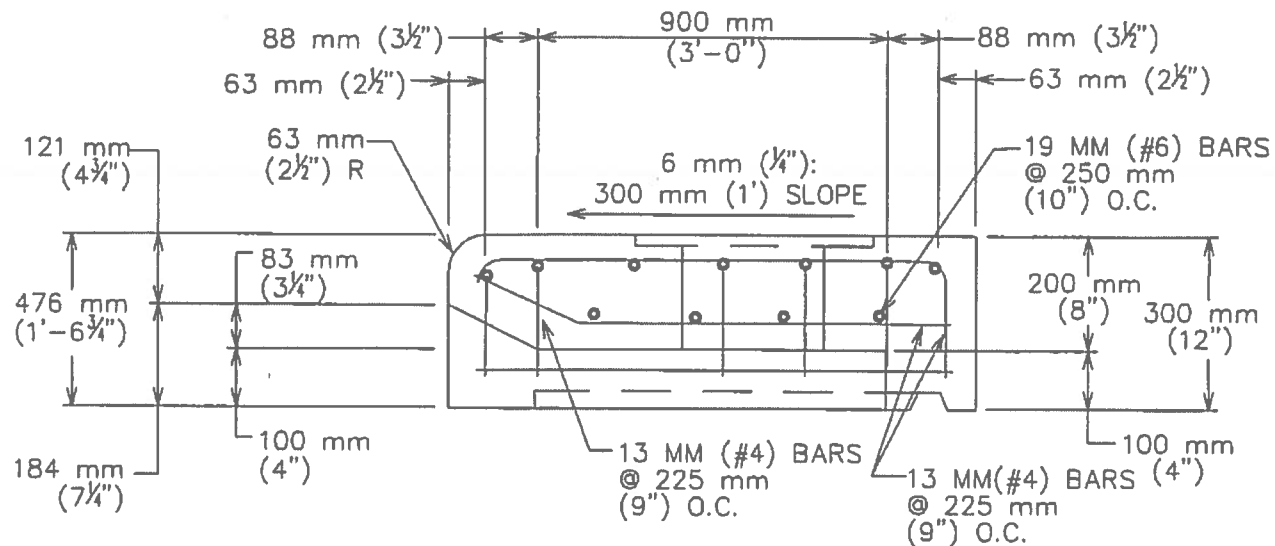
STANDARD NO.

508S-4

4 OF 7

ADOPTED





ELEVATION - SECTION  
FOR 1.5m(5') AND 3m(10')  
INLET  
(N.T.S.)

NOTE:  
900 mm (3'-0") FOR  
1.2 m (4') DEPTH INLET  
1.2 m (4'-0") FOR  
1.5 m (5') DEPTH INLET

CITY OF AUSTIN  
WATERSHED PROTECTION DEPARTMENT

CURB INLET 1.5m(5') AND 3m(10') PRECAST  
TYPE 1 OR TYPE 1-R

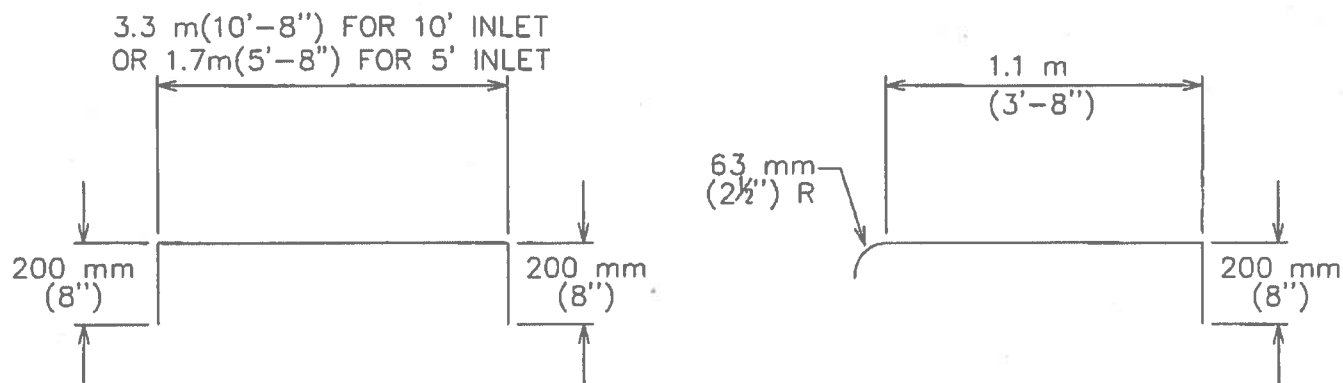
THE ARCHITECT/ENGINEER ASSUMES  
RESPONSIBILITY FOR APPROPRIATE USE  
OF THIS STANDARD.

STANDARD NO.

508S-4

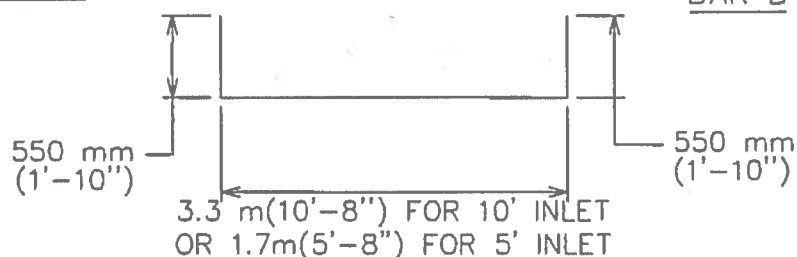
5 OF 7

ADOPTED

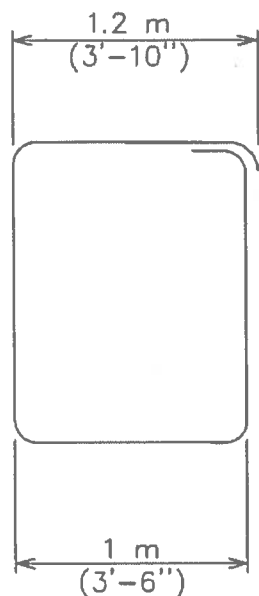


BAR A

BAR B

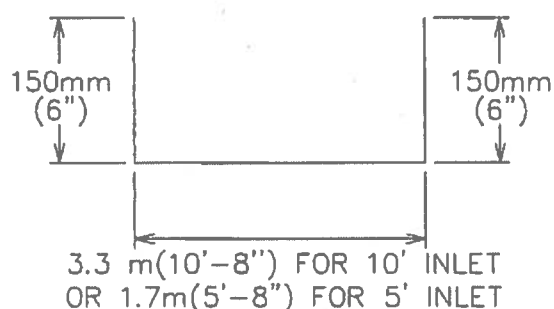


BAR D



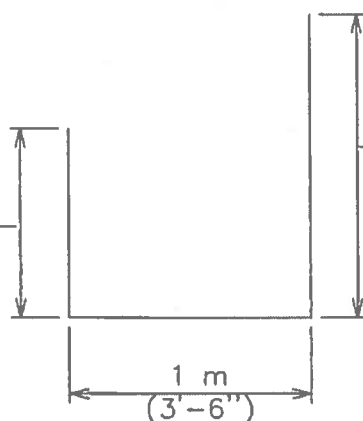
BAR C

850 mm (2'-10'') FOR  
1.2 (4') DEPTH INLET,  
OR  
1.1 m (3'-10'') FOR  
1.5 m (5') DEPTH INLET



BAR E

850 mm (2'-10'') FOR  
1.2 m (4') DEPTH INLET,  
OR  
1.1 m (3'-10'') FOR  
1.5 m (5') DEPTH INLET



BAR F

CITY OF AUSTIN  
WATERSHED PROTECTION DEPARTMENT

CURB INLET 1.5m (5') AND 3m (10') PRECAST  
TYPE 1 OR TYPE 1-R

THE ARCHITECT/ENGINEER ASSUMES  
RESPONSIBILITY FOR APPROPRIATE USE  
OF THIS STANDARD.

STANDARD NO.

508S-4

6 OF 7

ADOPTED

NOTES:

1. ALL CONCRETE SHALL BE CLASS "A" AS PER ITEM 403S.
2. ALL REINFORCING STEEL SHALL BE GRADE 60
3. DIMENSIONS RELATING TO REINFORCING STEEL ARE TO CENTERS OF BARS.
4. IN AREAS OF CONFLICT BETWEEN REINFORCING STEEL, PIPES AND MANHOLE FRAME, THE REINFORCEMENT SHALL BE BENT OR ADJUSTED TO CLEAR AS DIRECTED BY THE ENGINEER.
5. PAYMENT FOR INLET AT THE CONTRACT PRICE SHALL INCLUDE THE TRANSITION CURB, IN ACCORDANCE WITH CITY OF AUSTIN STANDARD INLET DESIGN.
6. INVERT OF INLET SHALL BE SLOPED 1:20 WITH FILL CONCRETE BY CONTRACTOR, SHAPED AS "V" SECTION
7. THIS STANDARD COMPLIES WITH THE CITY OF AUSTIN STANDARD SPECIFICATIONS ITEM NO. 508S.
8. WHEN PLACING PRECAST INLETS IN SERIES TO CREATE A 15'-0" OR 20'-0" CURB INLET, THE CONNECTION BETWEEN INLET BOXES SHALL BE SOIL TIGHT AND FULLY CONVEY THE PEAK DESIGN FLOW FROM THE UPSTREAM INLET(S). THE 1:20 INVERT SLOPE DESCRIBED IN NOTE 6 OF THIS DETAIL SHALL EXTEND FROM THE MOST DOWNSTREAM POINT TO THE MOST UPSTREAM OF THE CONNECTED INLET BOXES. AT NO TIME CAN MORE THAN 20-LF OF CURB OPENING BE CONNECTED TO A MAIN STORM DRAIN LINE WITH ONE LATERAL STORM DRAIN CONNECTION.

CITY OF AUSTIN WATERSHED PROTECTION DEPARTMENT	CURB INLET 1.5m(5')AND3m(10')PRECAST TYPE 1 OR TYPE 1-R	
_____ ADOPTED	THE ARCHITECT/ENGINEER ASSUMES RESPONSIBILITY FOR APPROPRIATE USE OF THIS STANDARD.	STANDARD NO. <b>508S-4</b> 7 OF 7

