

East Elevation
Scale: 3/16" = 1'-0"

East Elevation - Congress Ave Leased Frontage 72' (L)

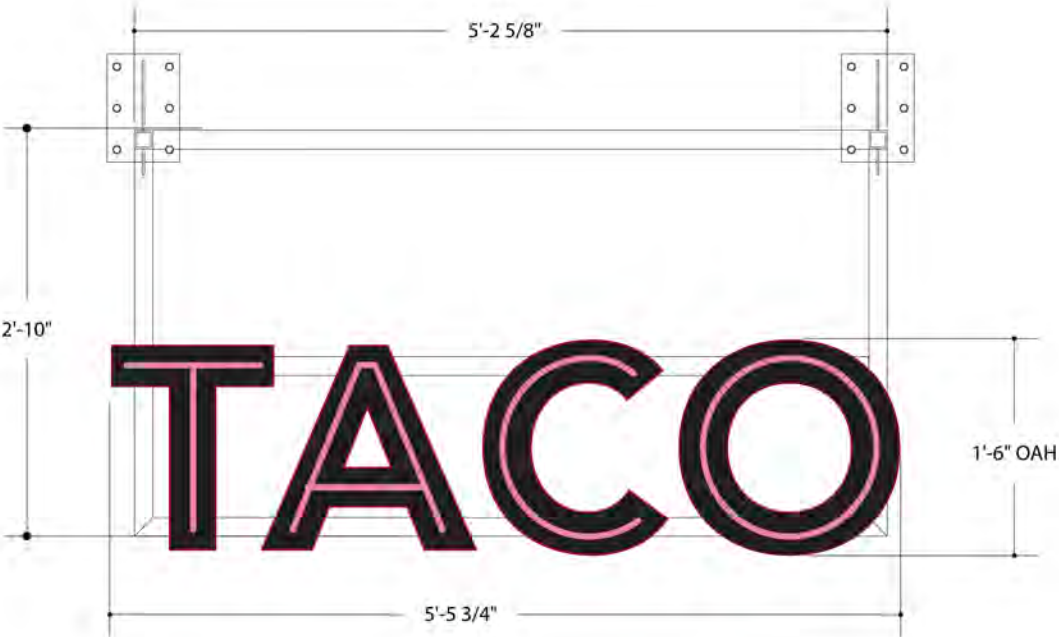
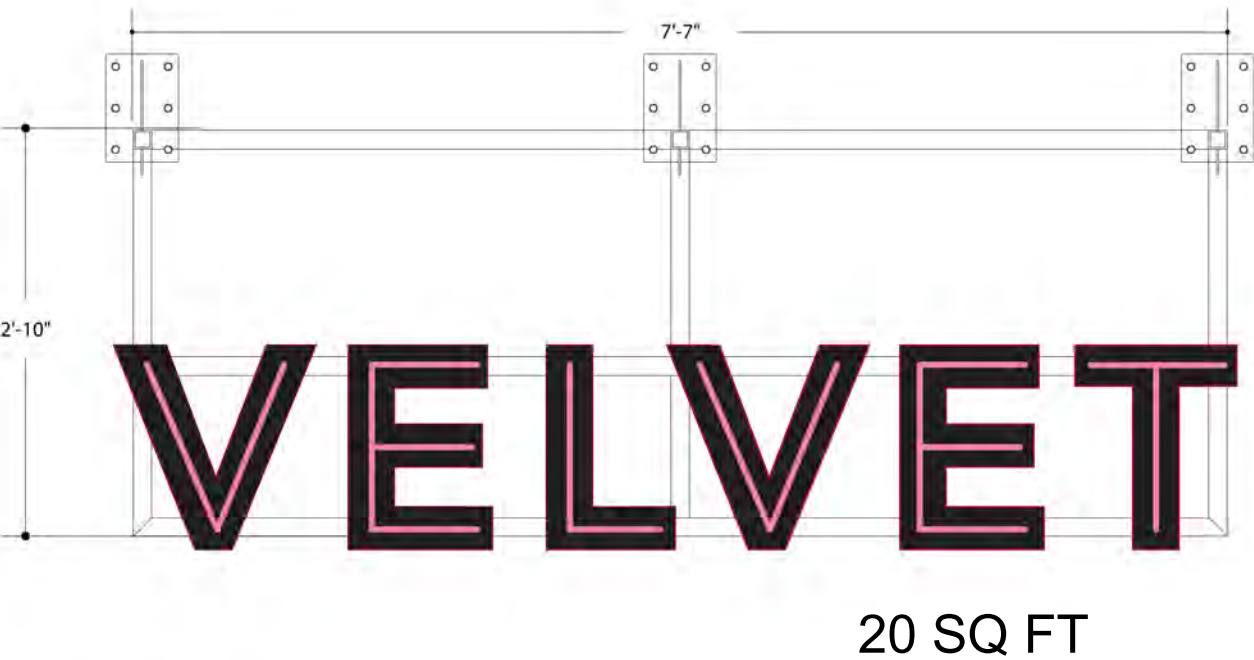
20 SQ FT



Section Detail and Framing Detail / refer to 92J10411BV2S2.pdf



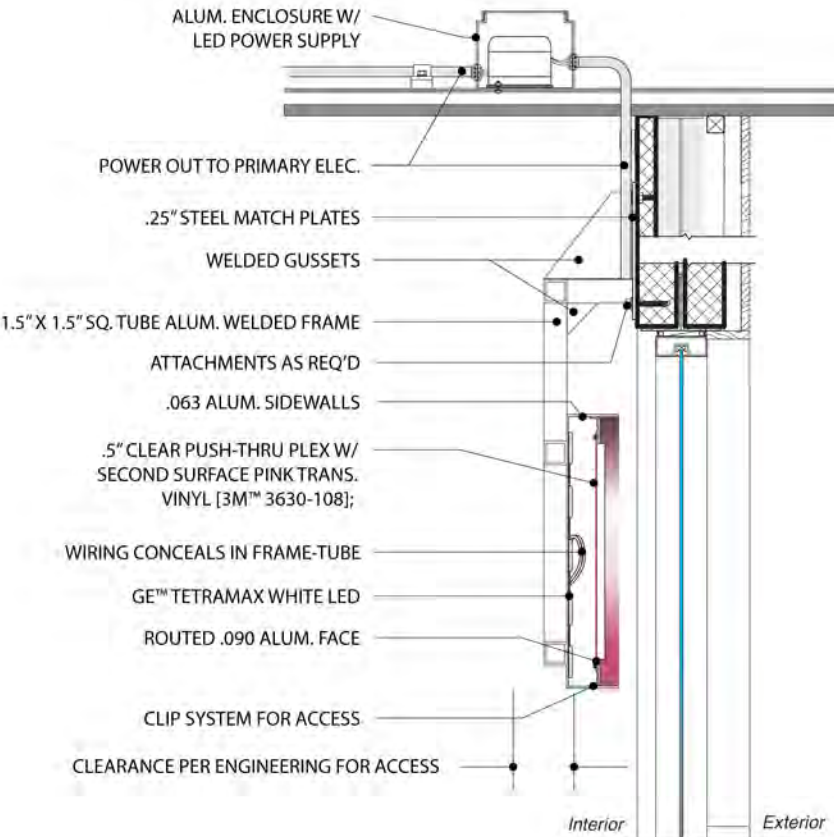
- B CHANNEL LETTERS**
Scale: 3/8" = 1'-0"
- Fabricate ONE (1) set of open-face channel letters built to UL specs.;
 - 3" deep channel letters: .063 aluminum sidewalls and raw-edges finished in Matthews Polyurethane to match PMS 208 Burgundy.
 - .090 aluminum faces painted Matthews Black;
 - Letters to have .5" clear push-thru acrylic with pink translucent vinyl applied to second-surface [3M™ 3630-108];
 - White GE™ Tetramax LED;
 - Letters to attach to, and suspend with sq. tube supports and mounting plates per engineering;
- Engineering and finish color tbd;
- Remote power source and disconnect switch;
 - Electrical requirement: 120v to be supplied at sign location by others;



B CHANNEL LETTERS

Scale: 3/4" = 1'-0"

- Fabricate ONE (1) set of open-face channel letters built to UL specs;
- 3" deep channel letters: .063 aluminum sidewalls and raw-edges finished in Matthews Polyurethane to match PMS 208 Burgundy.
 - .090 aluminum faces painted Matthews Black;
 - Letters to have .5" clear push-thru acrylic with pink translucent vinyl applied to second-surface [3M™ 3630-108];
 - White GE™ Tetramax LED;
 - Letters to attach to, and suspend with 1.5" sq. alum. tube supports and steel mounting plates per engineering;
- Engineering and finish color tbd;
- Remote power source and disconnect switch;
 - Electrical requirement: 120v to be supplied at sign location by others;



10212 METRIC BLVD.
AUSTIN, TEXAS 78758
800-327-1104 / 512-494-0002
fsgi.com

VELVET TACO
522 Congress Ave.
Austin, Texas 78701

Start Date: 7/26/19
Last Revision: 10/11/19
Job#92J10411
Dwg. #92J10411BV2S2

Design:
Ben Anglin / IDV
Sales:
Andrew Chapman

CLIENT APPROVAL: I have reviewed and approved the sign details on this drawing for fabrication and installation.
© COPYRIGHT 2019 / ALL RIGHTS RESERVED



UL Installation Requirements:
This sign is intended to be installed in accordance with the requirements of Article 600 of the National Electrical Code and/or other applicable local codes. This includes proper grounding and bonding of the sign.

East Elevevation - Congress Ave / Leased Space 67' (L)



East Elevation
Scale: nts

SIGN TYPE A

SIGN TYPE B



10212 METRIC BLVD.
AUSTIN, TEXAS 78758
800-327-1104 / 512-494-0002
fsgi.com

VELVET TACO
522 Congress Ave.
Austin, Texas 78701

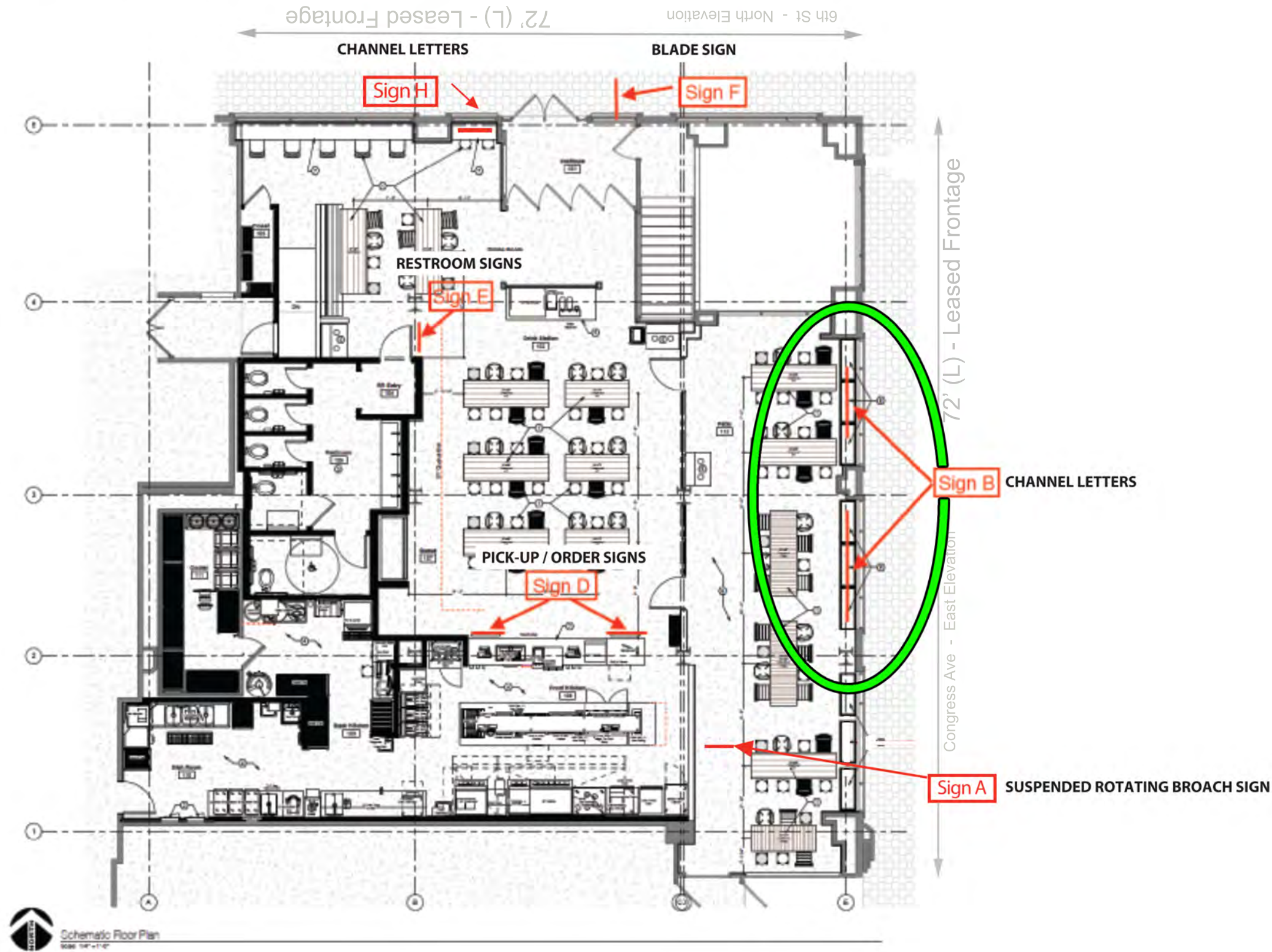
Start Date: 7/26/19
Last Revision: 11/08/19
Job#92J10411
Dwg. #92J10411EASTELE1_REV2

Design:
Ben Anglin
Sales:
Andrew Chapman

CLIENT APPROVAL: I have reviewed and approved the sign details on this drawing for fabrication and installation.
© COPYRIGHT 2018 / ALL RIGHTS RESERVED



UL Installation Requirements:
This sign is intended to be installed in accordance with the requirements of Article 600 of the National Electrical Code and/or other applicable local codes. This includes proper grounding and bonding of the sign.



10212 METRIC BLVD.
AUSTIN, TEXAS 78758
800-327-1104 / 512-494-0002
fsgi.com

VELVET TACO
522 Congress Ave.
Austin, Texas 78701

Start Date: 7/26/19
Last Revision: 11/08/19
Job# 92J10411
Dwg. # 92J10411_SITEPLAN_REV3

Design:
Ben Anglin
Sales:
Andrew Chapman

CLIENT APPROVAL: I have reviewed and approved the sign details on this drawing for fabrication and installation.
© COPYRIGHT 2018 / ALL RIGHTS RESERVED



UL Installation Requirements:
This sign is intended to be installed in accordance with the requirements of Article 600 of the National Electrical Code and/or other applicable local codes. This includes proper grounding and bonding of the sign.

H CHANNEL LETTERS
Scale: 3/4" = 1'-0"

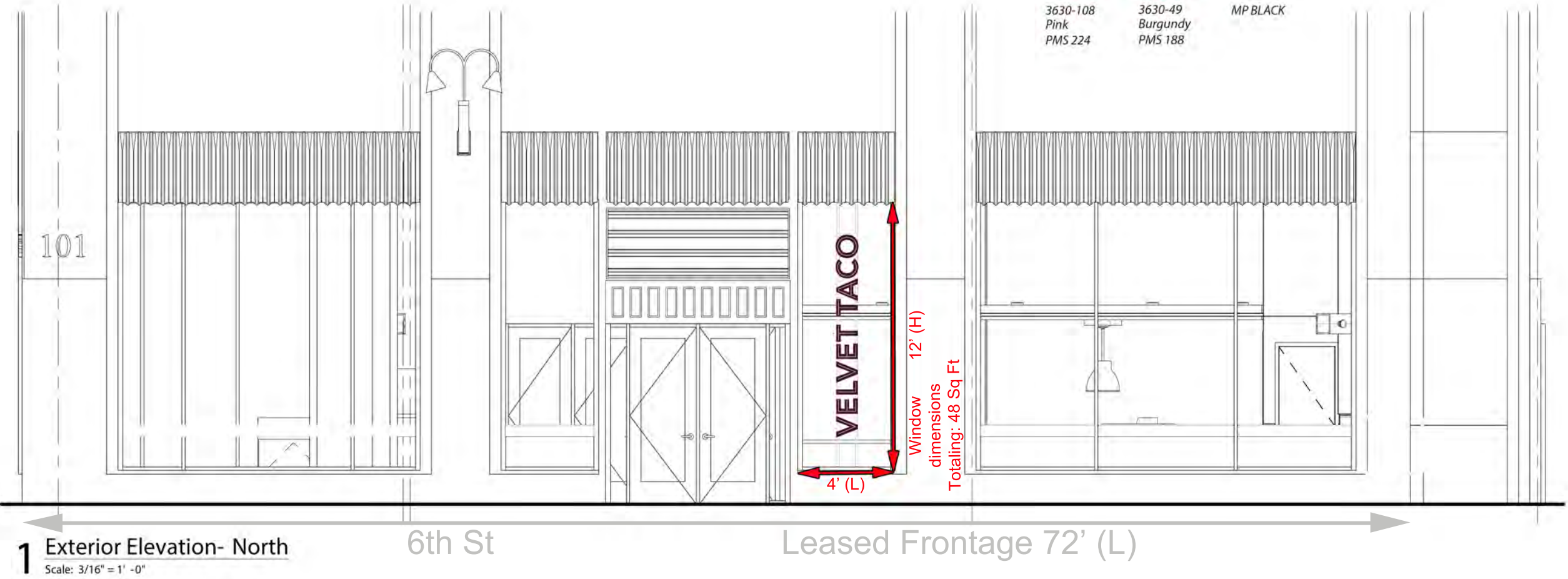
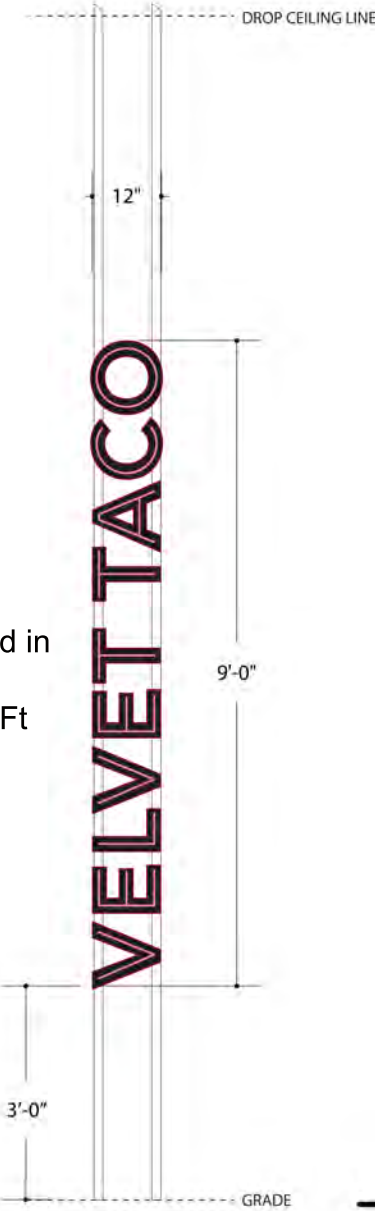
- Fabricate ONE (1) set of open-face channel letters built to UL specs.;
- 3" deep channel letters: .063 aluminum sidewalls finished in Matthews Polyurethane to match PMS 208 Burgundy.
 - .090 aluminum faces painted Matthews Black;
 - Letters to have .5" clear push-thru acrylic with pink translucent vinyl applied to second-surface [3M™ 3630-108];
 - White GE™ LED;
 - Letters to attach to, and suspend with 1 5/8" sq. uni-strut supports and mounting method per engineering; finish color tbd;
 - Remote power source and disconnect switch;
 - Electrical requirement: 120v to be supplied at sign location by others;



3M™ Translucent vinyls and
Pantone equivalents:



Sign to be placed in
window.
Totaling: 9 Sq Ft



10212 METRIC BLVD.
AUSTIN, TEXAS 78758
800-327-1104 / 512-494-0002
fsgi.com

VELVET TACO
522 Congress Ave.
Austin, Texas 78701

Start Date: 7/26/19
Last Revision: 11/5/19
Job#92J10263
Dwg. #92J10263HV2S1

Design:
Ben Anglin
Sales:
Andrew Chapman

CLIENT APPROVAL: I have reviewed and approved the sign details on this drawing for fabrication and installation.
© COPYRIGHT 2019 / ALL RIGHTS RESERVED



UL Installation Requirements:
This sign is intended to be installed in accordance with the requirements of Article 600 of the National Electrical Code and/or other applicable local codes. This includes proper grounding and bonding of the sign.



1 Exterior Elevation-North
Scale: NTS

SIGN TYPE F

North Elevation - 6th St / Leased Space 67' (L)

SIGN TYPE H



10212 METRIC BLVD.
AUSTIN, TEXAS 78758
800-327-1104 / 512-494-0002
fsgi.com

VELVET TACO
522 Congress Ave.
Austin, Texas 78701

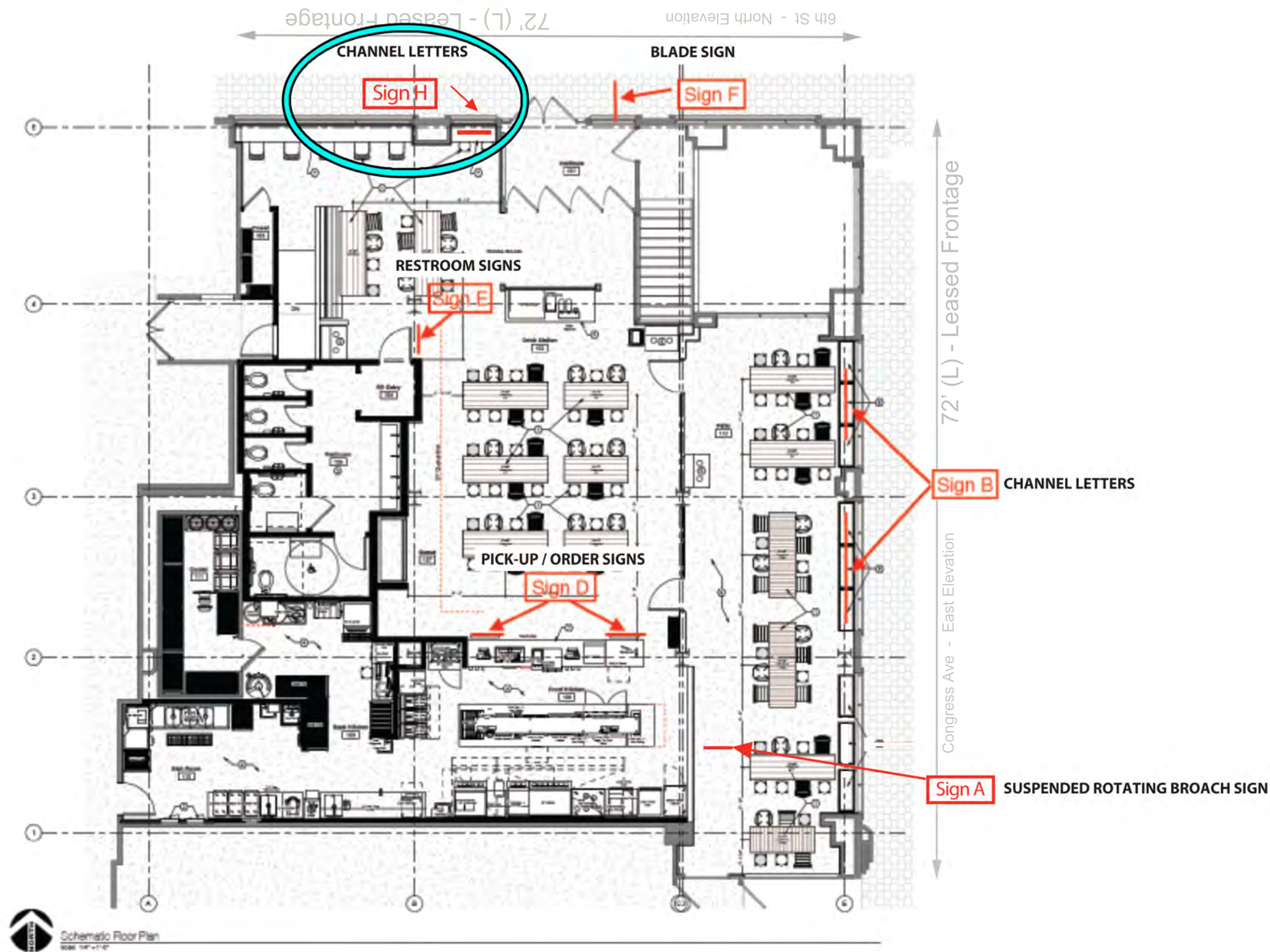
Start Date: 7/26/19
Last Revision: 10/9/19
Job#92J10411
Dwg. #92J10411NORTH_ELE1_REV2

Design:
Ben Anglin
Sales:
Andrew Chapman

CLIENT APPROVAL: I have reviewed and approved the sign details on this drawing for fabrication and installation.
© COPYRIGHT 2018 / ALL RIGHTS RESERVED



UL Installation Requirements:
This sign is intended to be installed in accordance with the requirements of Article 600 of the National Electrical Code and/or other applicable local codes. This includes proper grounding and bonding of the sign.



10212 METRIC BLVD.
AUSTIN, TEXAS 78758
800-327-1104 / 512-494-0002
fsgi.com

VELVET TACO
522 Congress Ave.
Austin, Texas 78701

Start Date: 7/26/19
Last Revision: 11/08/19
Job# 92J10411
Dwg. #92J10411_SITEPLAN_REV3

Design:
Ben Anglin
Sales:
Andrew Chapman

CLIENT APPROVAL: I have reviewed and approved the sign details on this drawing for fabrication and installation.
© COPYRIGHT 2018 / ALL RIGHTS RESERVED



UL Installation Requirements:
This sign is intended to be installed in accordance with the requirements of Article 600 of the National Electrical Code and/or other applicable local codes. This includes proper grounding and bonding of the sign.