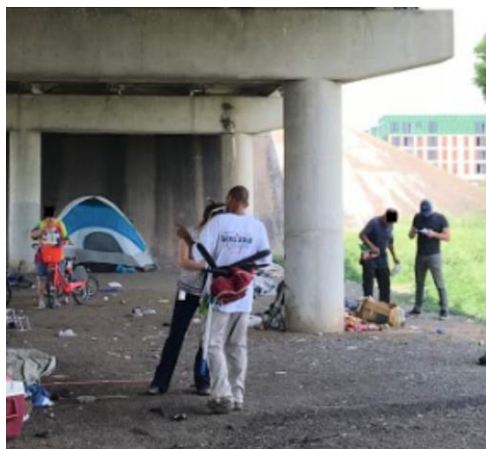
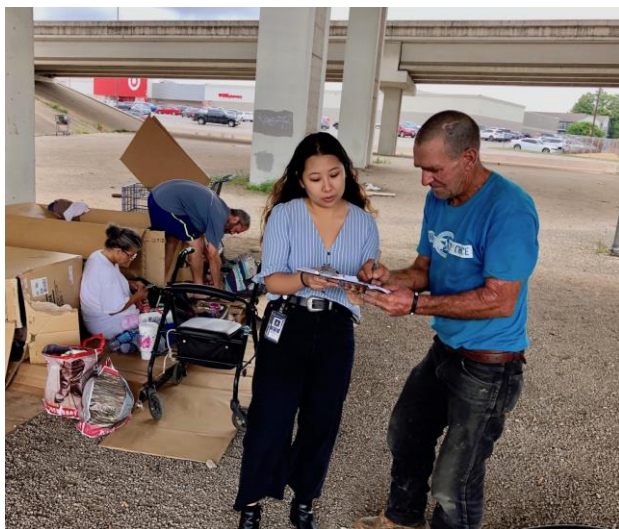


Violet Bag Encampment Garbage Collection Pilot

Zero Waste Action Committee 01/08/2020
Learnings and Recommendations

Interdepartmental Homelessness Encampment Management Program





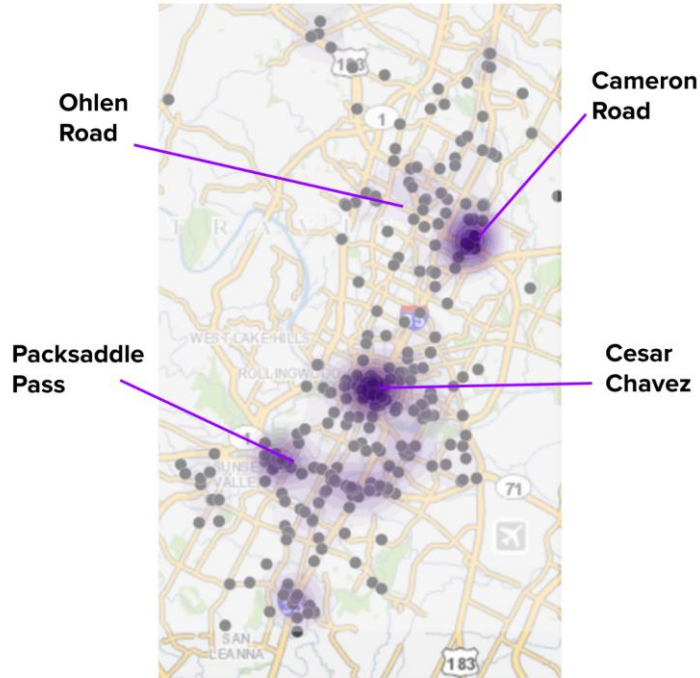
Seattle
Public
Utilities

Encampment Trash Pilot

2017 Annual Report



4 sites chosen based on 311 call data



Below is the list of locations that are reported the most to us since we began tracking at the end of March 2019.

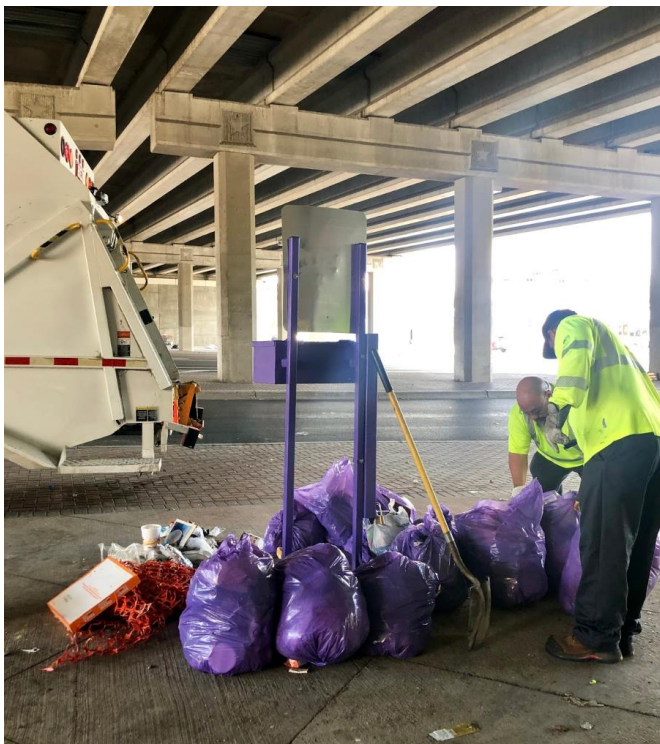
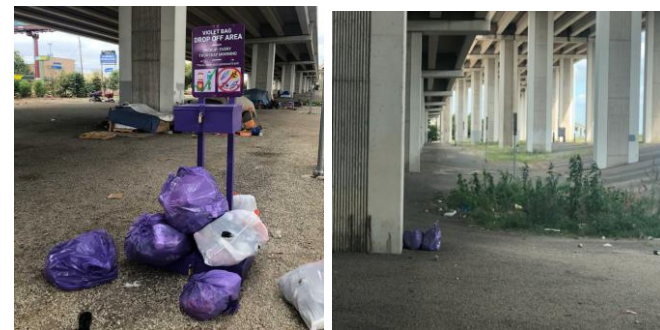
Location	Issue	Total Reported
Us 183 and Cameron	Transient camp; trash	92
290/Ben White and S Lamar	Transient camp; trash	64
Ben White and Manchaca	Transient camp; trash	48
183 and Ohlen/Spicewood Springs/McNeil/Braker	Transient camp; trash	45
Ben White and Congress	Transient camp; trash	27
Ben White and Packsaddle	Transient camp; trash	12

Other necessary criteria for a pilot site:

- An active encampment with resident buy in
- Along an existing ARR route
- Have a safe, accessible area to pull up a truck

Kiosks vs. Outreach Distribution





Violet Bag Garbage Collection Pilot



WHAT

This summer, the City of Austin will test a Garbage Collection Pilot to extend weekly personal trash collection to un-housed residents. This location has been selected as an area for the Pilot. As part of the Pilot you may notice:

- Integral Care outreach workers providing site residents with the purple garbage bags
- Filled purple garbage bags left at designated sites for collection
- Weekly collection from Austin Resource Recovery using the existing collection schedules for this neighborhood

WHEN

Testing will begin the week of July 8th and run for six weeks. Thorough monthly clean-ups, lead by the Public Works Department, will continue on the regular schedule.

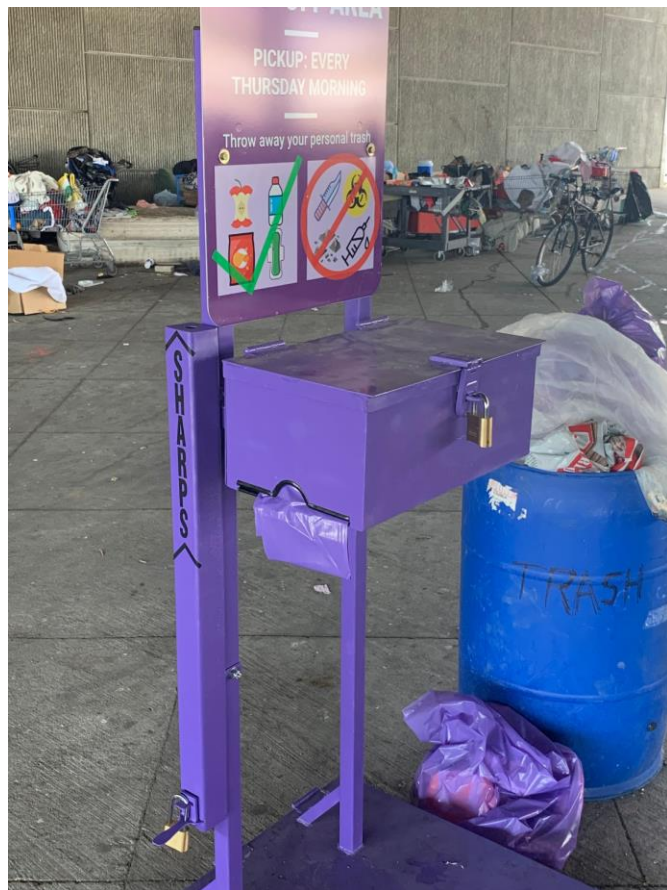
WHERE

The City will operate the pilot in four areas around the city. Departments are working together to identify specific locations within those areas for trash collection that are safe for Austin Resource Recovery employees and accessible for site residents. The designated collection sites may change during the pilot based on what we learn.

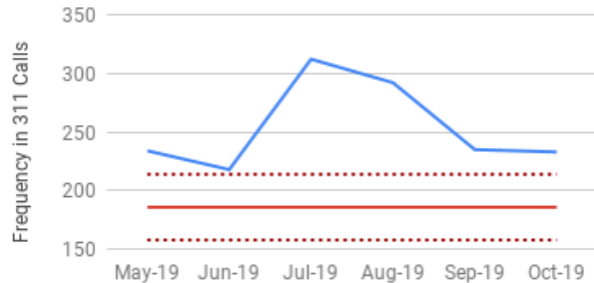
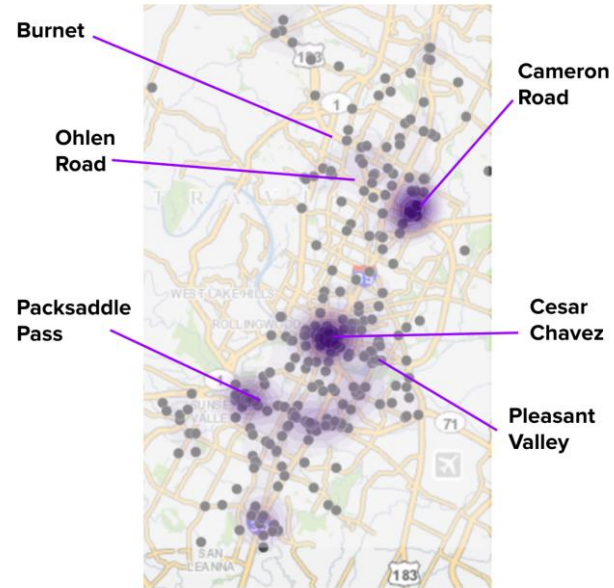
How you can help?

Question? Concerns? Ideas? Your observations are important to this Pilot. Please contact homeless.input@austintexas.gov if you would like to provide input for the project.

Iterations



Impact

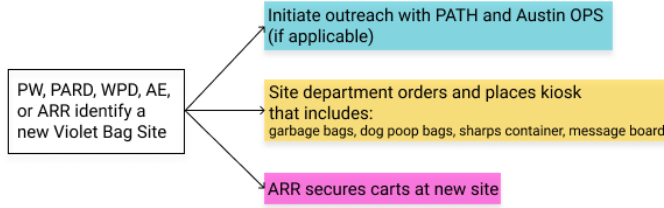


Residents are proud of their efforts. The tract looks immensely better. - PW

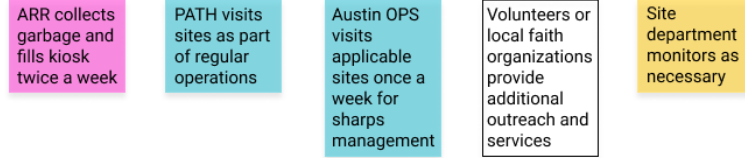
Next Steps

Violet Bag Program Model

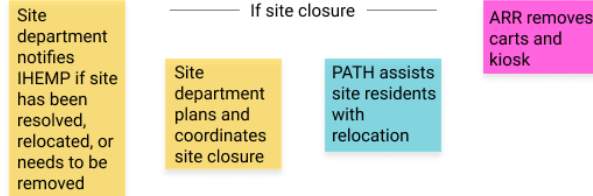
Site Identification



Site Operation



Site Resolution



Continue weekly Interdepartmental Homeless Encampment Management Program (IHEMP) meetings to coordinate site activities

- ARR has taken over responsibility for ordering bags and filling kiosks
- All sites ideally will have kiosks, with new iterations of kiosks being explored
- Integral Care and the Office of Design and Delivery assist in site identification and outreach
- Sites will will close and move as necessary, coordinated at weekly Interdepartmental Homelessness Encampment Management Program meetings