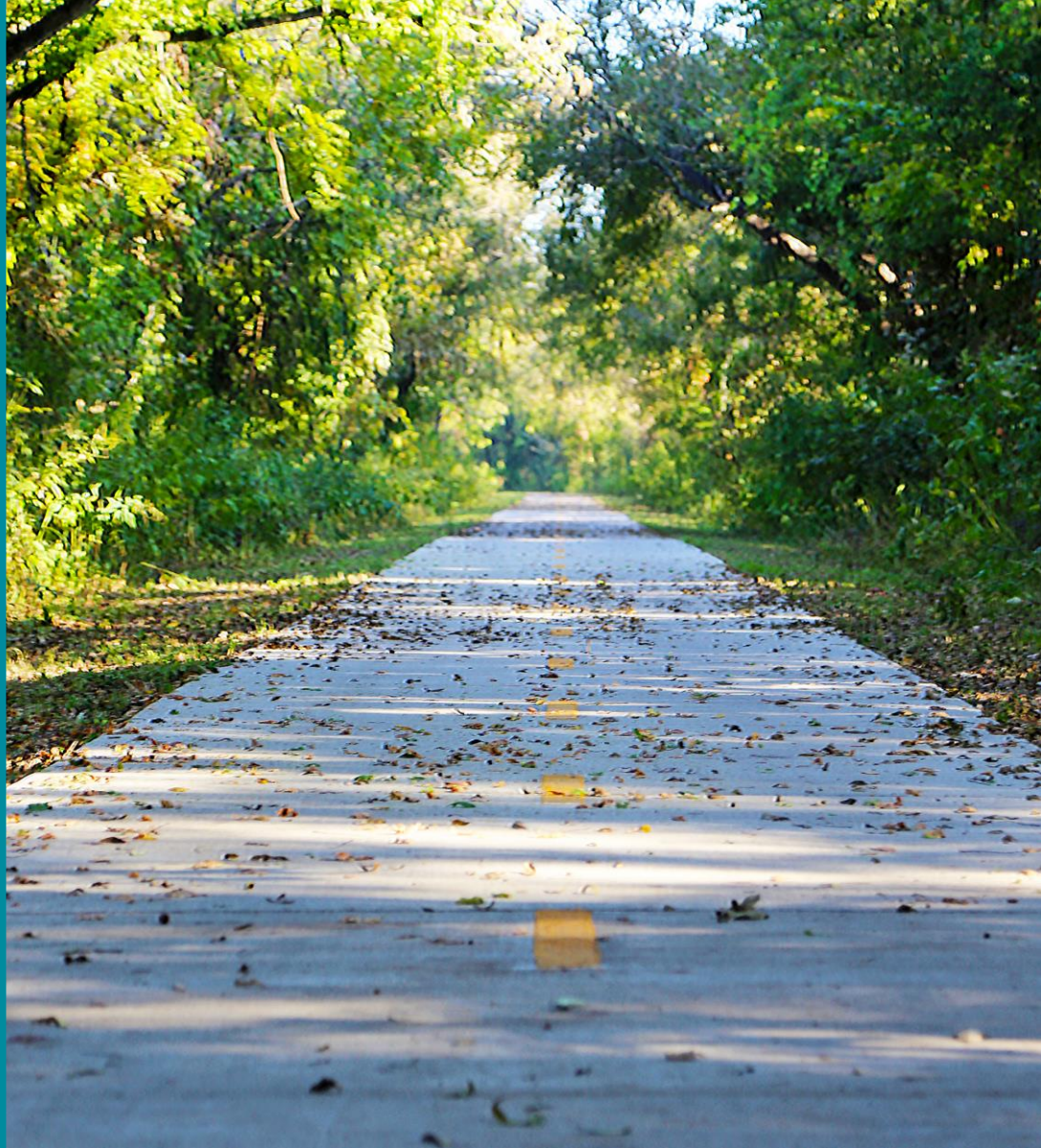


CITY OF AUSTIN

Northern Walnut Creek Trail Phase 1A at Balcones District Park

Parks & Recreation Board Update



Agenda

- **Project History**
- **Trail Design and Citizen Communication**
- **Site Drainage**
- **Warranty Items**
- **Maintenance**
- **Project Closeout**
- **Questions**

Project History



2002 Trail
planning
initiated

2010
Construction of
Phase 1
initiated

2011-2013
Project on hold

2013 Phase 1A
broken out of
Phase 1

2014 Water
Utility project
combined with
Phase 1A

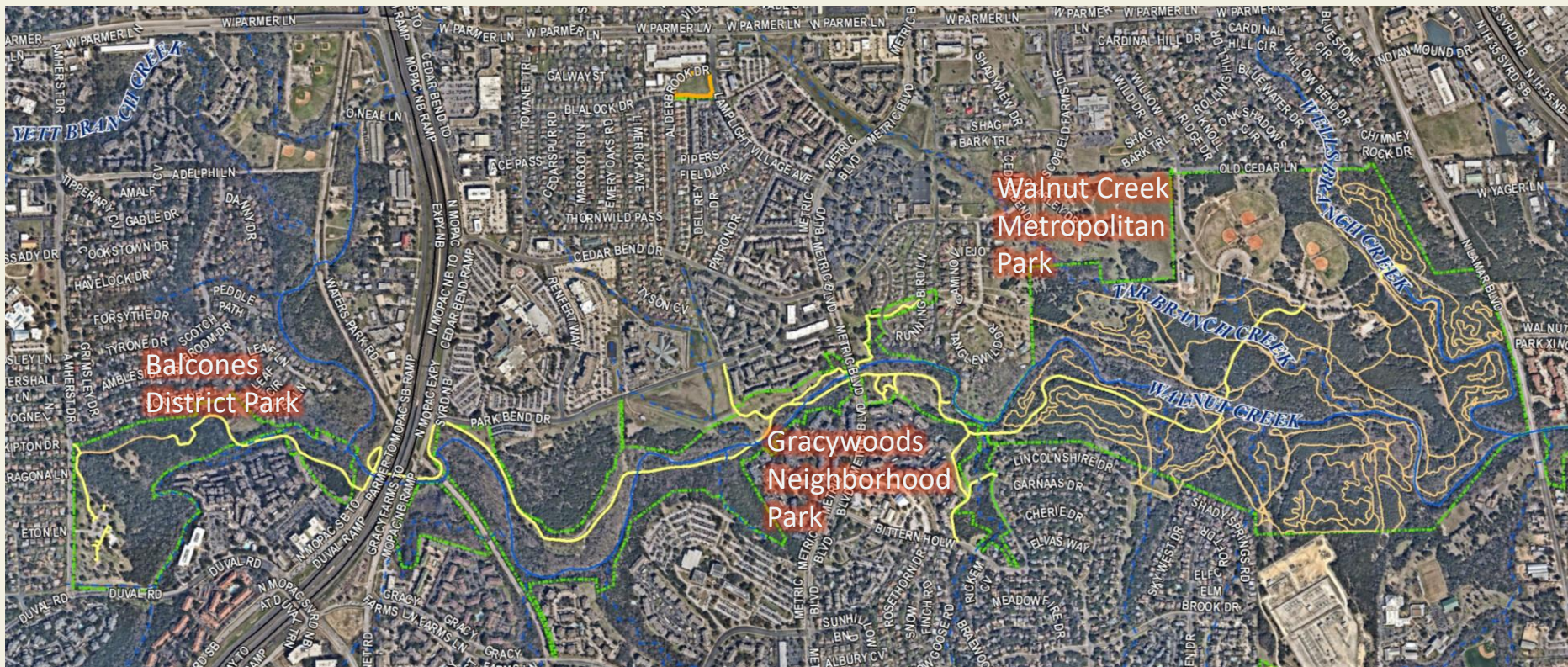
2017 Phase 1
trail complete

Jan. 2018
Water Utility
trail section
complete

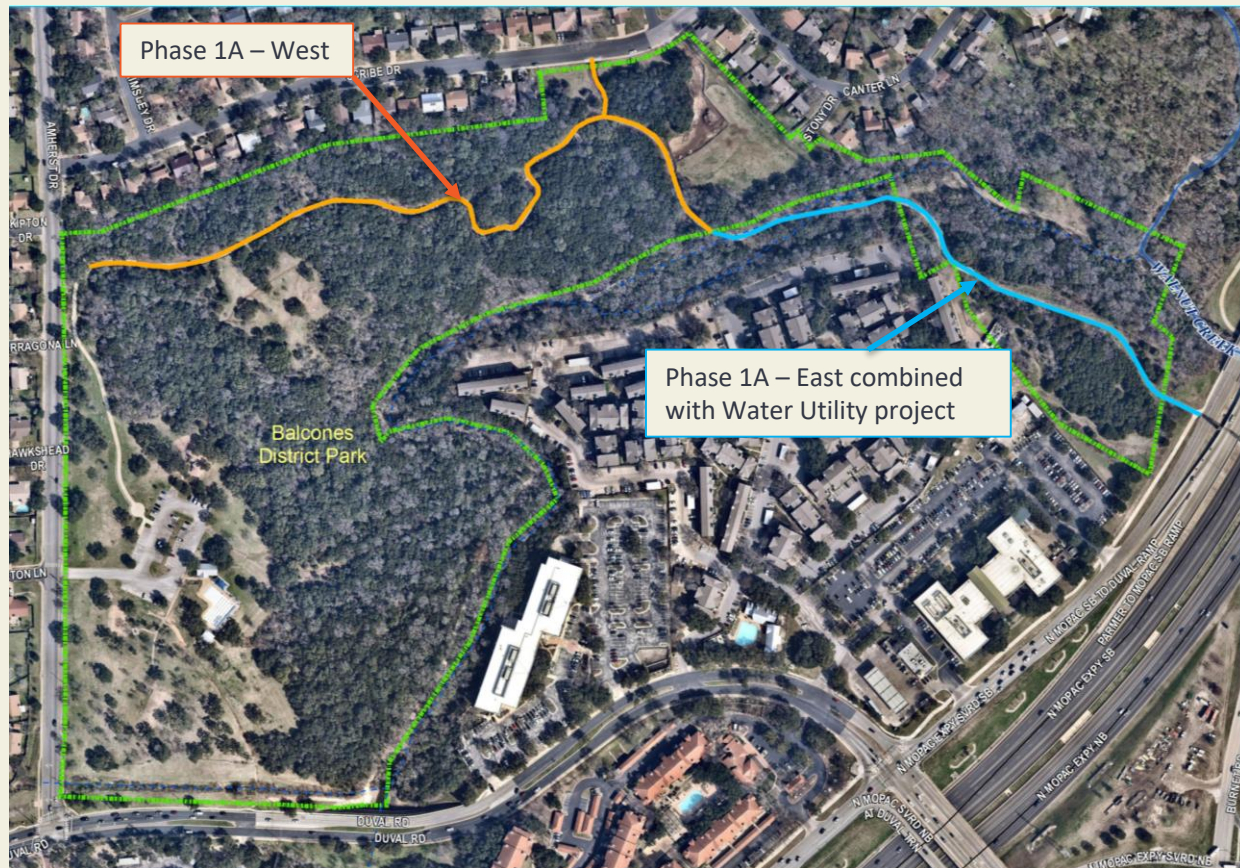
Nov. 2018
Phase 1A
complete

Northern Walnut Creek Trail

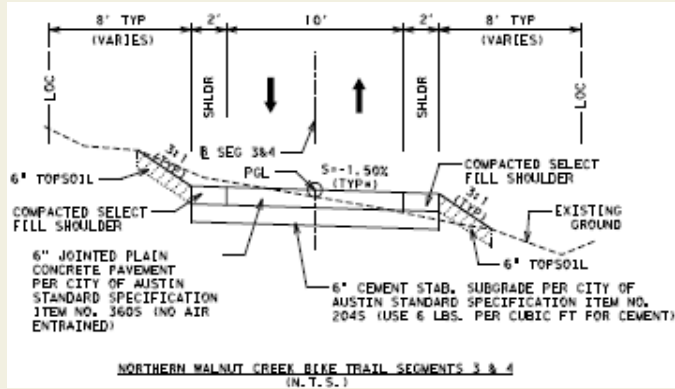
Phase 1



Project Map Phase 1A



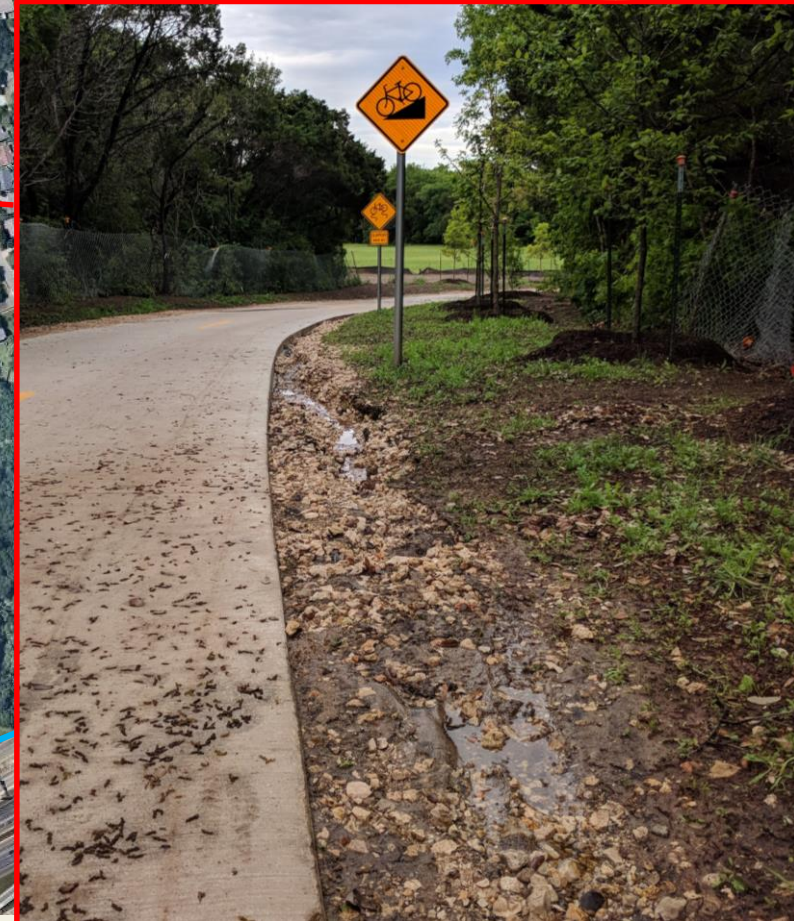
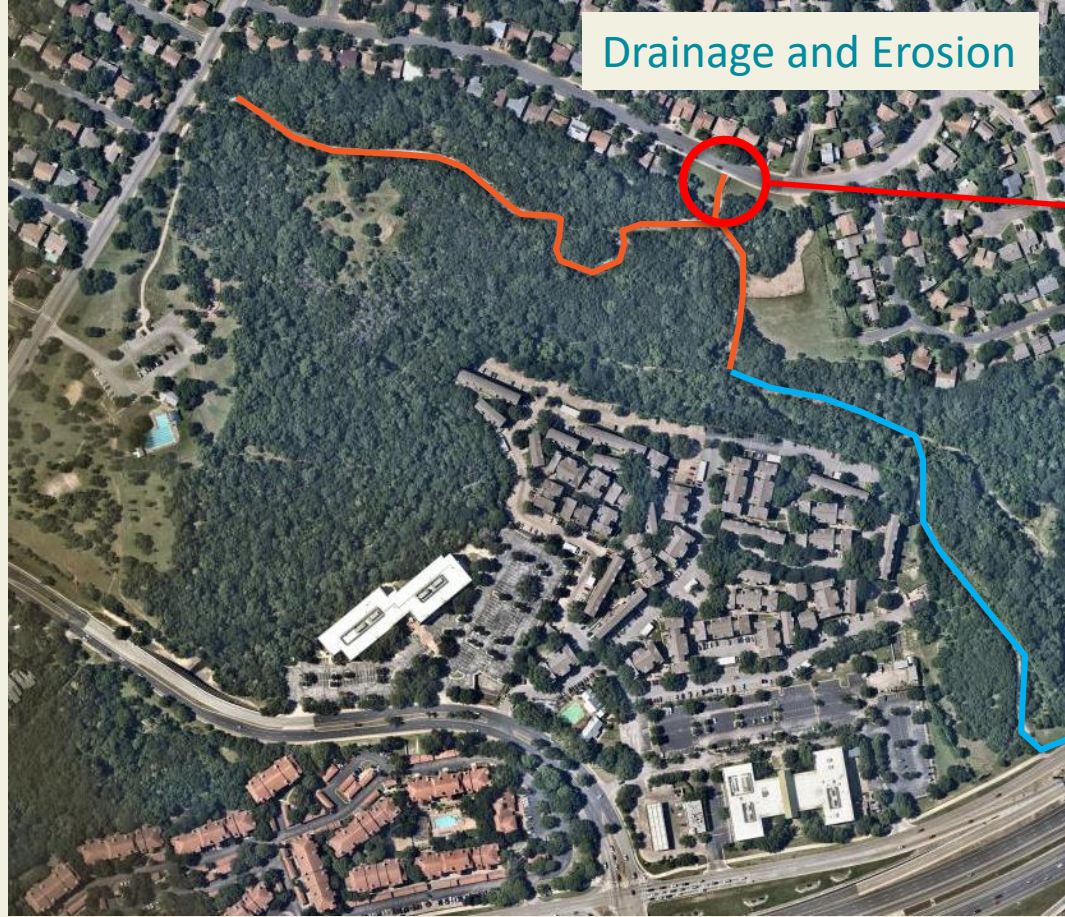
Trail Design and Citizen Communication



- The design of the Phase 1A trail includes a compacted gravel shoulder. This design was in response to community and maintenance staff feedback.
- Staff consulted with the Milwood Neighborhood on the design of the Phase 1A trail section during and outside of public meetings.
- City staff met with representatives of the Milwood Neighborhood on site on multiple occasions during the project to discuss concerns.
- Staff was responsive to citizen communications throughout the project.



Site Drainage



Warranty Items



Cracked Concrete



Trees in Stress



Maintenance



Trail Shoulder Erosion

- Two change orders were added to the construction contract to address site erosion and the ramp at Scribe Drive.
- The 1ft wide compacted gravel shoulder is part of the permitted trail design, and not part of the landscaping of the trail.
- Native vegetation is slow to establish but has begun to fill in after a long hot summer. As vegetation increases, erosion and drainage issues will naturally decrease.
- The current urban trail detail showing topsoil over sub-base was adopted in December 2018, after the trail had been permitted and construction began.

Tree Health

- This is the first urban trail project where trees were planted along the trail as part of the project.
- Watering and survival of the trees during the project is the responsibility of the contractor. Tree maintenance and survival are covered under the one year warranty and become the responsibility of the Owner at the end of the warranty phase.
- Ensuring water access in greenbelts is a challenge especially near creeks and in flood plains.

Project Closeout



- **Gravel shoulder removal in select areas** removed and replaced with top soil and native seeding where significant scouring was occurring. COMPLETE
- **Ramp at Scribe Drive** re-design and install ramp to prevent water from Scribe Drive entering the park. COMPLETE



Project Closeout



- **Pavement cracking**– substantial cracks identified in panels of the trail that could pose an ADA compliance concern have been replaced. Minor cracking in the pavement has been caulked per Street and Bridge normal maintenance procedures.
COMPLETE



Project Closeout



- **Bridge/Railing** – Separation between the trail paving, retaining walls and railing were identified as being caused by soil conditions found in active floodways. These separations will be filled and sealed. The railing will be repaired as needed.
COMPLETE



Project Closeout



- **Silt Fence** – The environmental inspector approved removal of all of the silt fence except the staging area.
- **Environmental compliance** – Project team has met with Development Services representatives and have confirmed all concerns have been addressed.
- **Trees** – Forty-one trees in Phase 1A West have been replaced under the contract warranty. Staff is working on options to provide supplemental watering to the trees. Multiple trees replaced under warranty in Phase 1A East have died. The project team is working to determine how to address the loss of these trees along with trees planted in Phase 1A West.

The project team will continue to monitor trail conditions as part of the urban trail regional systems maintenance and operations. City maintenance staff will address issues as they are identified.



CITY OF AUSTIN

Questions?

Ana Seivert
Urban Trails
Project Coordinator
Ana.Seivert@austintexas.gov
512-974-2858

D'Anne Williams
Parks and Trails
Project Manager
Danne.Williams@austintexas.gov
512-974-9456

