

City of Austin Joint Sustainability

Your Community Tree Preservation Division

January 22, 2020

Keith Mars, AICP, CA
City of Austin, Texas



Overview

- **The Community Tree Preservation Division**
- **Tree preservation policy objectives and outcomes**
- **Code and process**
- **Due diligence**
- **Proposed Code Rewrite**

Chapter 1

The Community Tree Preservation Division: Urban Forest Program



(A Healthy Urban Forest for All)

Click [here](#) to see all the great work

Chapter 2

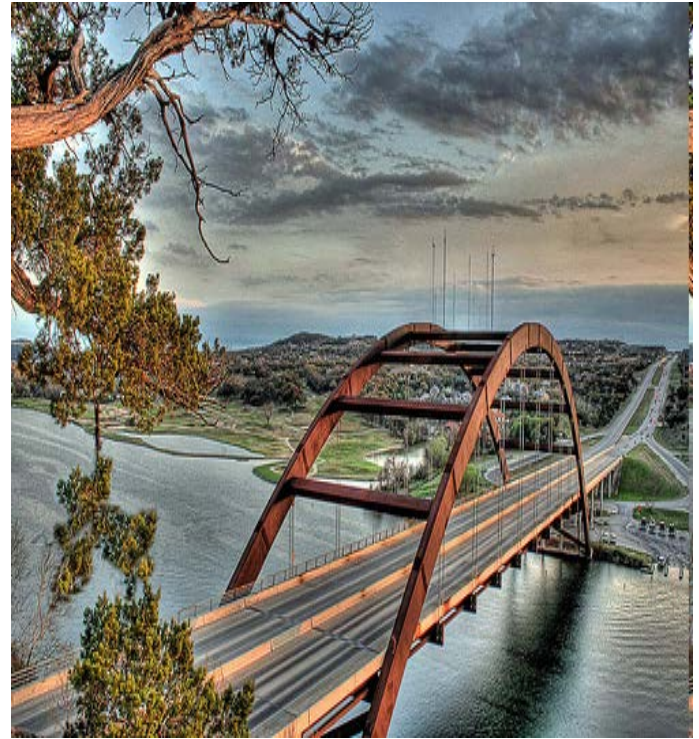
The Community Tree Preservation Division: City Arborist Program



(Nationally recognized tree preservation ordinances)

Tree Ordinances in Austin

- First adopted in 1983
- Public health, safety, and welfare (Home Rule & Discretionary)
- Preserve first then replenish
- Alignment with council strategic outcomes



Preserve the character of Austin's urban forest, protect its current health, and increase its longevity

The Value of Trees in the Urban Environment

- Trees are foundational to multiple public policy objects
- Trees are a \$16 billion asset
- Trees reduce energy cost by ~\$20M/year
- Trees reduce speed and shade pedestrians



CITY OF AUSTIN STRATEGIC DIRECTION

OUR VISION

Austin is a beacon of sustainability, social equity, and economic opportunity; where diversity and creativity are celebrated; where community needs and values are recognized; where leadership comes from its community members, and where the necessities of life are affordable and accessible to all.

OUR STRATEGIC OUTCOMES

Together we strive to create a complete community where every Austinite has choices at every stage of life that allow us to experience and contribute to all of the following outcomes:



ECONOMIC OPPORTUNITY & AFFORDABILITY

Having economic opportunities and resources that enable us to thrive in our community.



MOBILITY

Getting us where we want to go, when we want to get there, safely and cost-effectively.



SAFETY

Being safe in our home, at work, and in our community.



HEALTH & ENVIRONMENT

Enjoying a sustainable environment and a healthy life, physically and mentally.



CULTURE & LIFELONG LEARNING

Being enriched by Austin's unique civic, cultural, ethnic, and learning opportunities.



GOVERNMENT THAT WORKS FOR ALL

Believing that city government works effectively and collaboratively for all of us—that it is equitable, ethical and innovative.



Our Community Values Trees

- Home Rule—Tree protection is an expression of our values
- Continued public support for trees and tree preservation is crucial to the future of our urban forest



Efficacy of Heritage Tree Ordinance

- Ordinance adopted in February 2010
- 14 Commission variances
- Over 5,000 reviews by City Arborist staff
- More than 70,000 inches of Heritage Trees reviewed
- 95% preservation rate. National model.

Chapter 2

Administering the Tree Ordinances



(Process matters)

The Larger the Tree, the Greater the Protection

Levels of Tree Ordinance Protection



8" and larger

- Required to be surveyed on commercial site plan submittals



19" and larger are PROTECTED SIZE TREES

- All species are protected
- Tree permit is required for impacts or removal (residential and public)



24" and larger can be HERITAGE TREES

- Only specific species qualify
- Requires a variance for removal or impacts that exceed code requirements
- Variances can be administrative
- Greater penalties for unpermitted impacts



30" and larger HERITAGE TREES

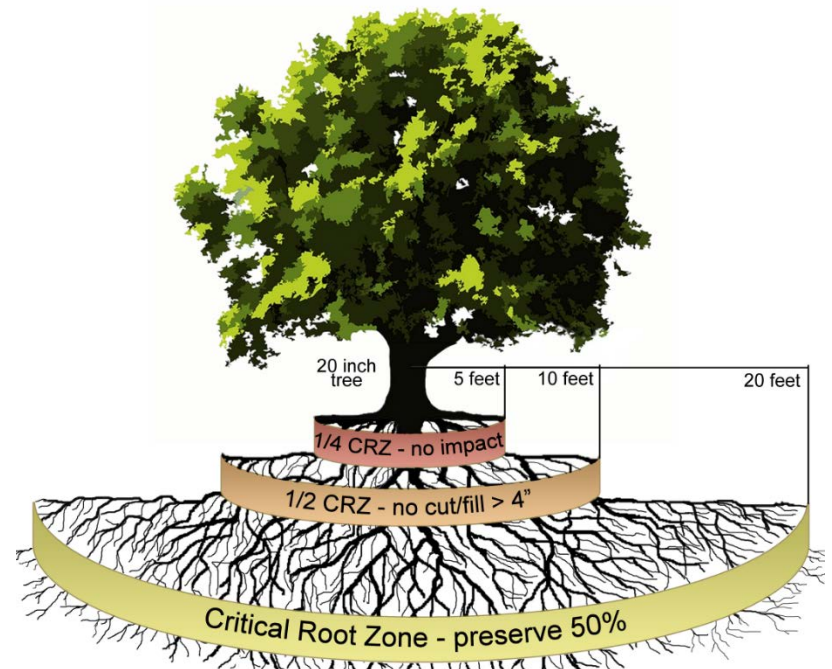
- Proposed variances must go through the public process

Review Criteria for Protected and Heritage Trees

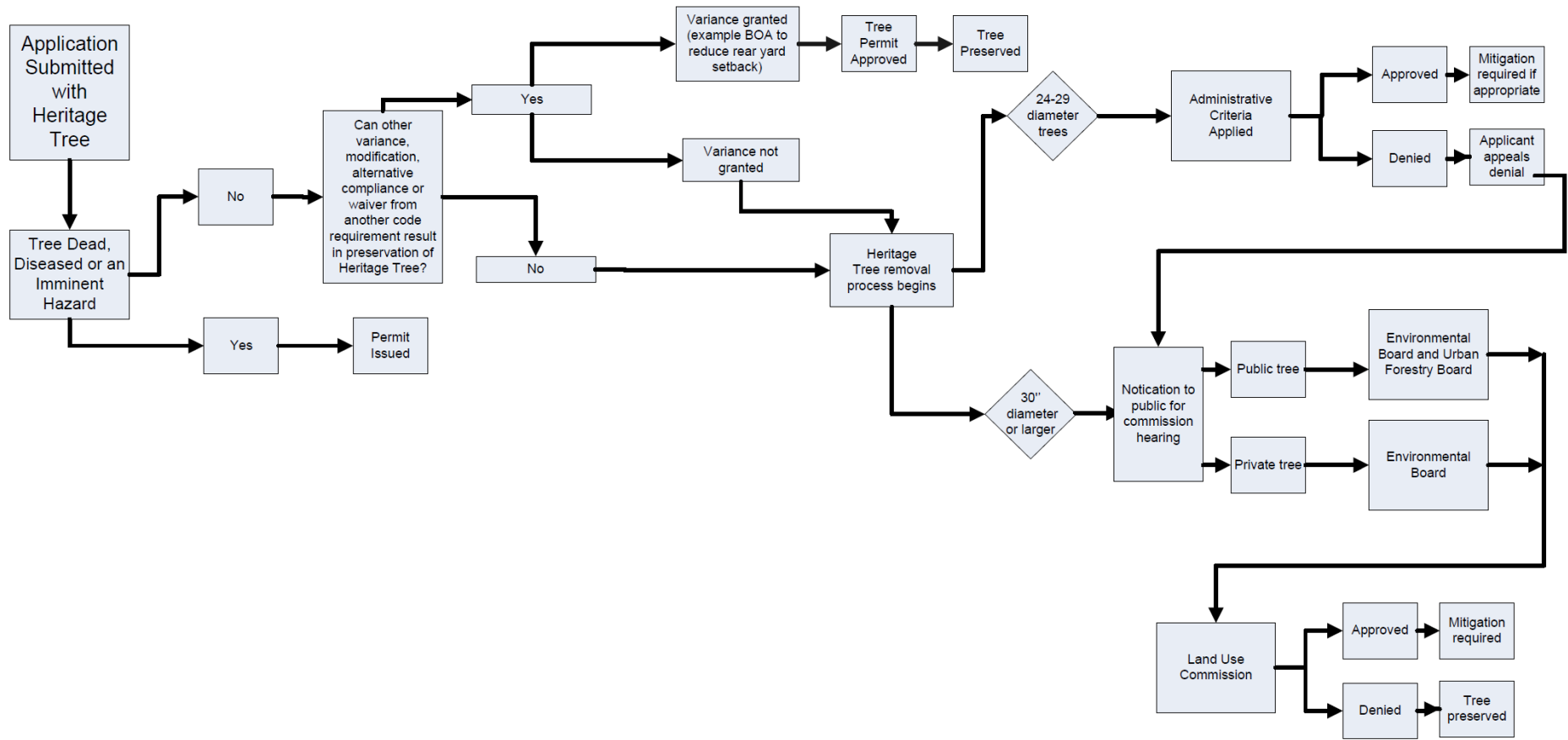
Code Criteria for Removal

1. Prevents a reasonable use
2. Prevents reasonable access
3. Dead, diseased, or imminent hazard

Rules for Protecting Trees



Due Process for Administering Heritage Tree Ordinance



Chapter 3

Due Diligence for Reasonable Use



(Reveal the real and perceived constraints, protect
more trees)



2D

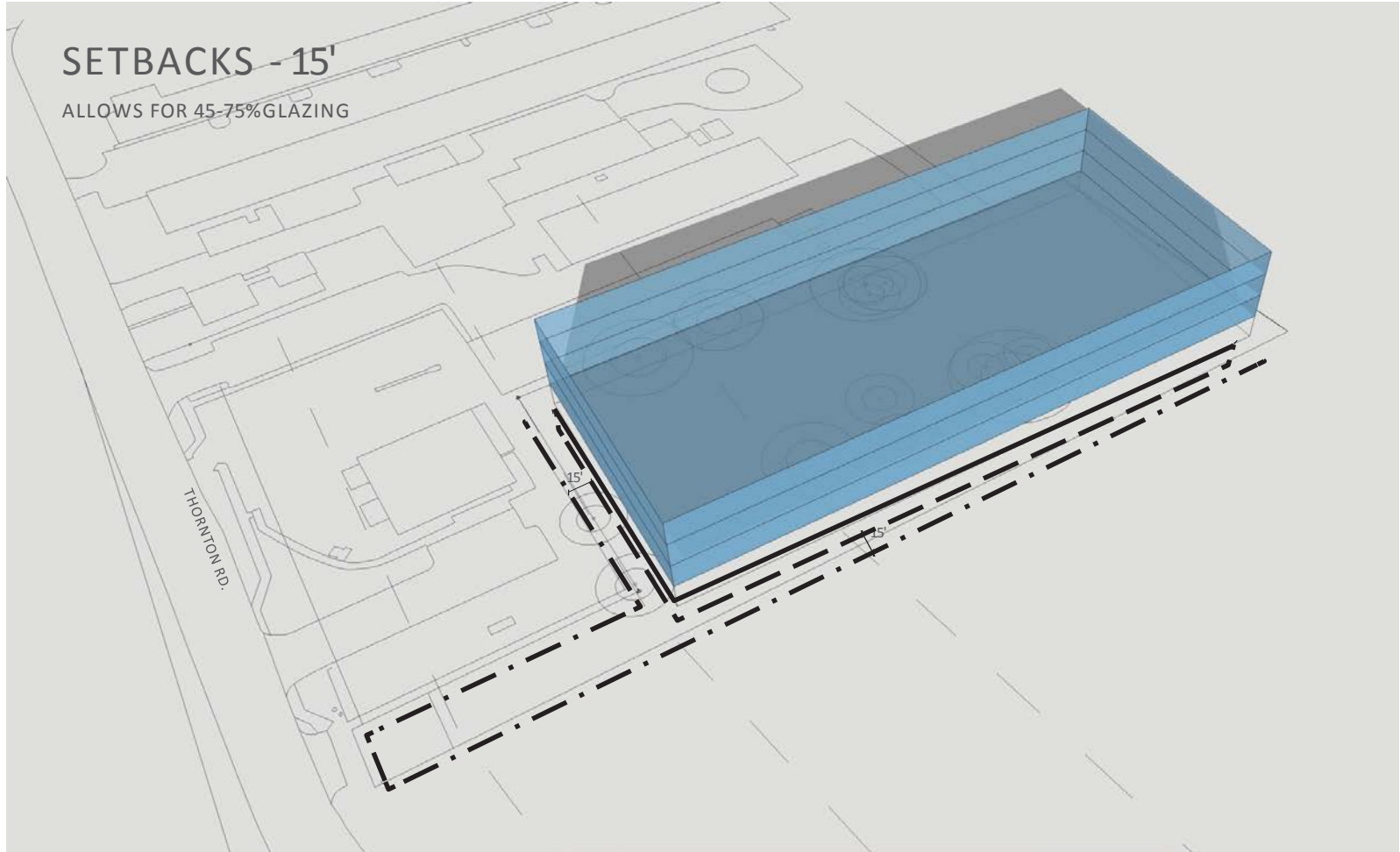


- Parking standards.
- Know your Fire Code! It has a big impact on land use and trees.
- Know your driveway alignment options.



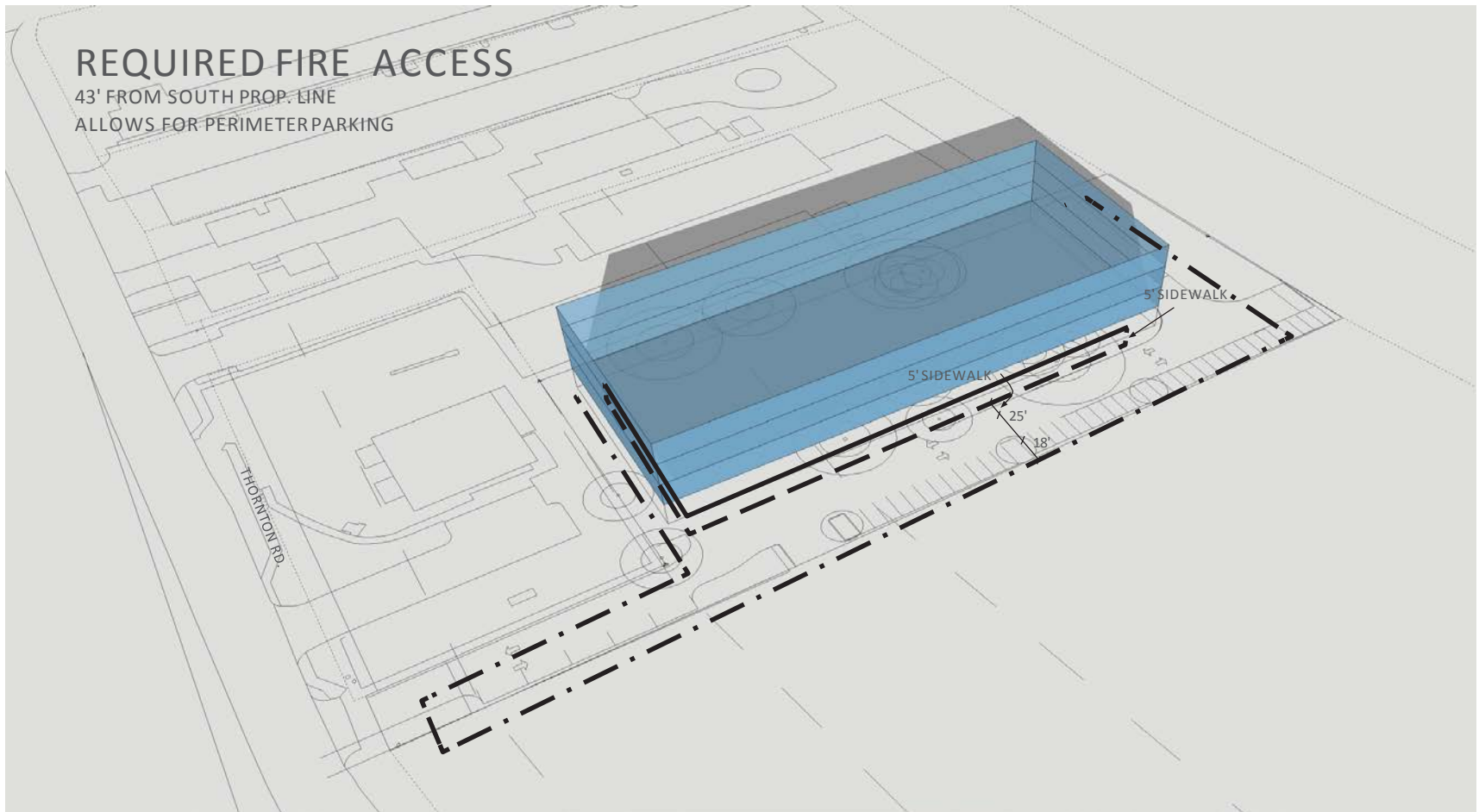
SETBACKS - 15'

ALLOWS FOR 45-75% GLAZING

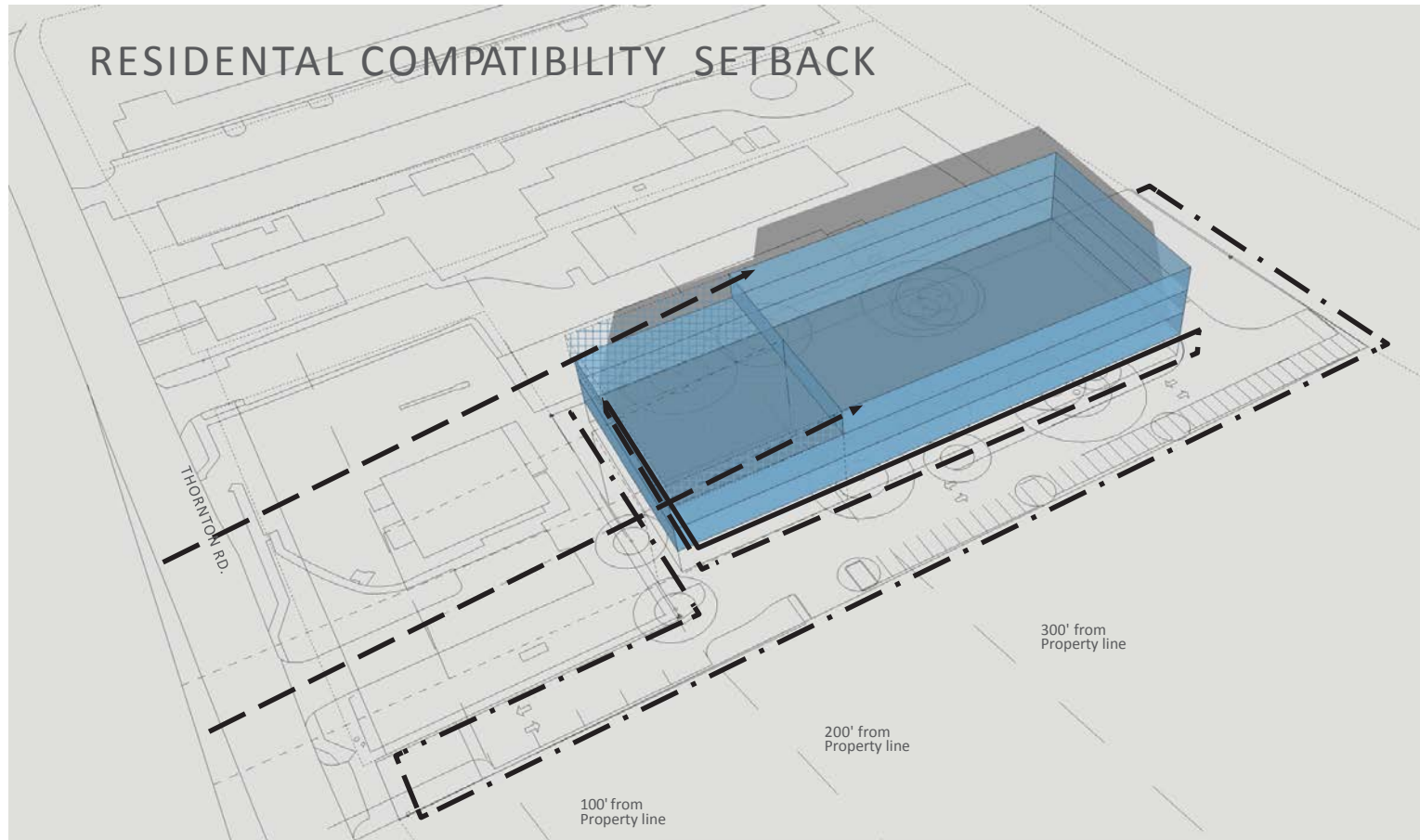


REQUIRED FIRE ACCESS

43' FROM SOUTH PROP. LINE
ALLOWS FOR PERIMETER PARKING



RESIDENTIAL COMPATIBILITY SETBACK



TREE PRESERVATION

TOP FLOOR

COUNCIL
HERITAGE TREE
OFFSET

SHIFTED TO 20'
OFF PROP. LINE
FOR CRZ OF
NORTH TREES

THORNTON RD.

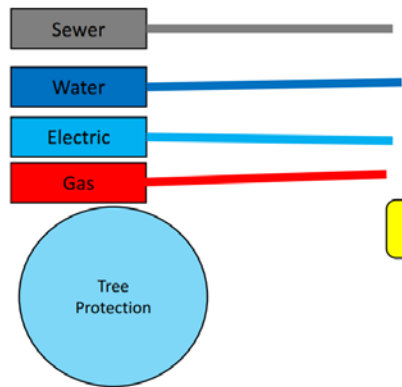
Site Diagram
Thornton 2 Office
Building



TREE PRESERVATION



Example Plans for Tree Review

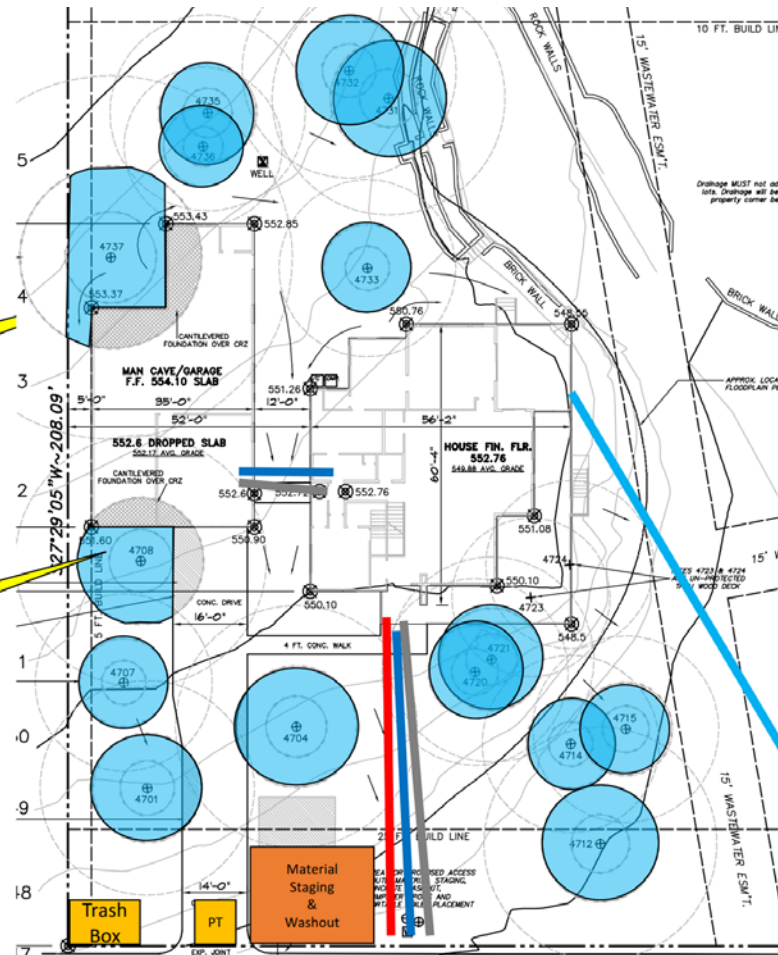


Add 2"x4" around trees

Add 2"x4" around trees

TREE TABLE

TAG#	SIZE/SPECIES
4701	23" PO
4704	26" LO
4707	19" ELM
4708	27" PO
4712	25" LO
4714	19" LO
4715	19" LO
4720	20" LO
4721	22" LO
4723	17" LO UN-PROTECTED
4724	18" SO UN-PROTECTED
4731	25" LO
4732	23" LO
4733	19" LO
4735	21" LO
4736	17" LO UN-PROTECTED
4737	39" LO



Chapter 4

Code Rewrite: Proposed Tree Code



Proposed Tree Code Updates

- Administrative modifications along corridors
- Street tree planting requirements
- Residential planting requirements
- Improved language and definitions

Thank You. Questions?



<http://austintexas.gov/departments/community-tree-preservation>

Keith.mars@austintexas.gov

(512) 974-2755

A little something extra

- <http://austin.maps.arcgis.com/apps/MapJournal/index.html?appid=6556beb9b4674d52a4720a30ffc012de>

Tree Canopy Cover

Year	% Tree Canopy Cover	Source
1977	39%	Rodgers & Harris, 1983
1982	37%	Crownover, 1991
1990	34%	Crownover, 1991
1996	34%	American Forests, 1996
2006	31%	City of Austin, 2006
2010	38%	City of Austin, 2010

Canopy webmap: <https://arcg.is/0OWDaP>