



## **Success By 6 Coalition Strategic Plan to Make Austin / Travis County a Happy, Healthy, and Enriching Place for Families and Young Children**



**SUCCESS BY 6**  
AUSTIN/TRAVIS COALITION

February 18, 2020

Cathy McHorse, Vice President Success By 6, United Way for Greater Austin

Thomas Trinh, Hogg Mental Health Policy Fellow, United Way for Greater Austin



LIVE UNITED

# Austin / Travis County Community Context

United Way for  
Greater Austin



# In Austin/ Travis County....

More than **one in three**  
children under six living in Travis County  
live in households with  
**low income.**



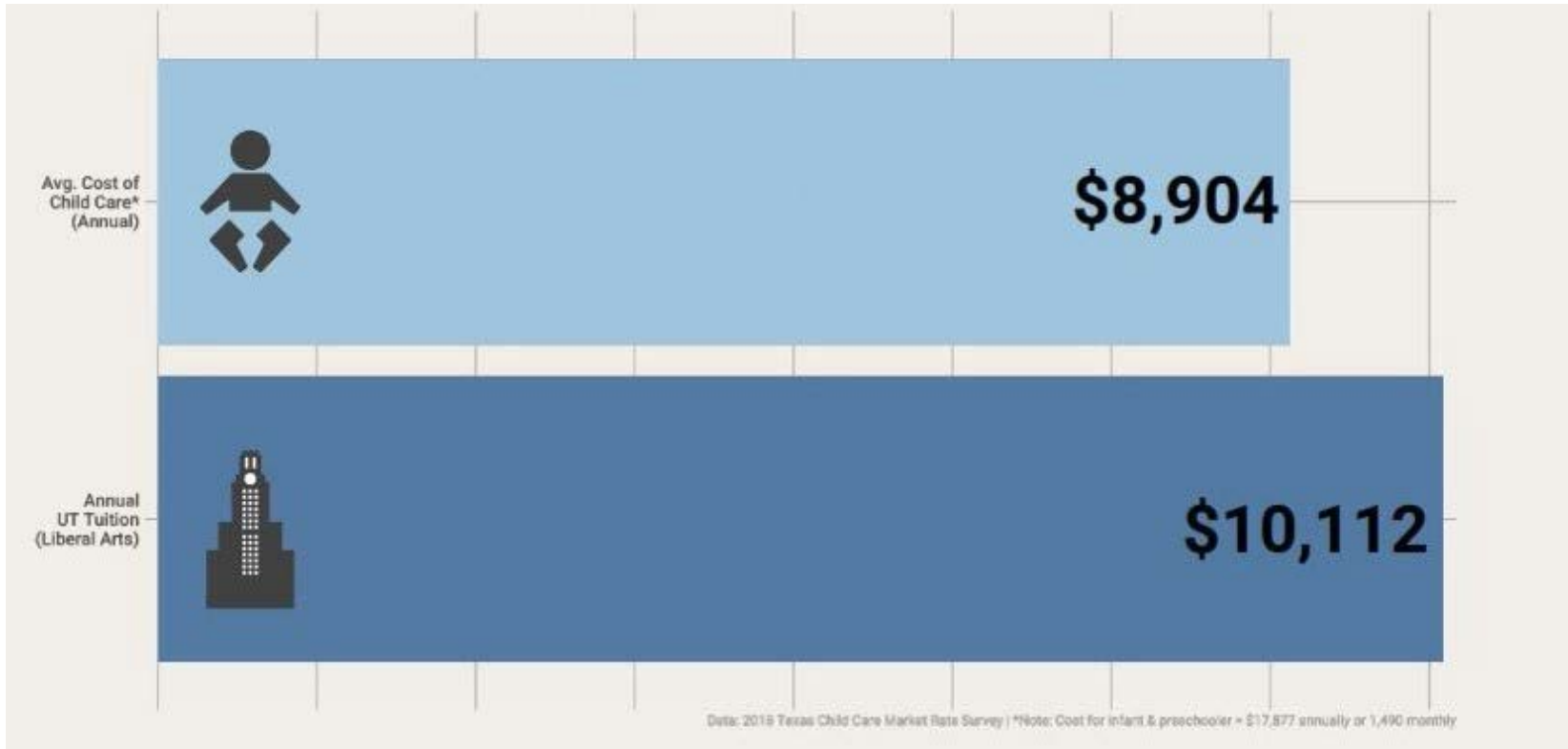
**90%**

of children under  
six from households  
experiencing poverty  
are children of color.

**3%**

of these children are  
Asian American

# Child Care is Incredibly Expensive



**45%** of programs serving children from households with low income are high quality.



# Why Does Poverty Matter?

---





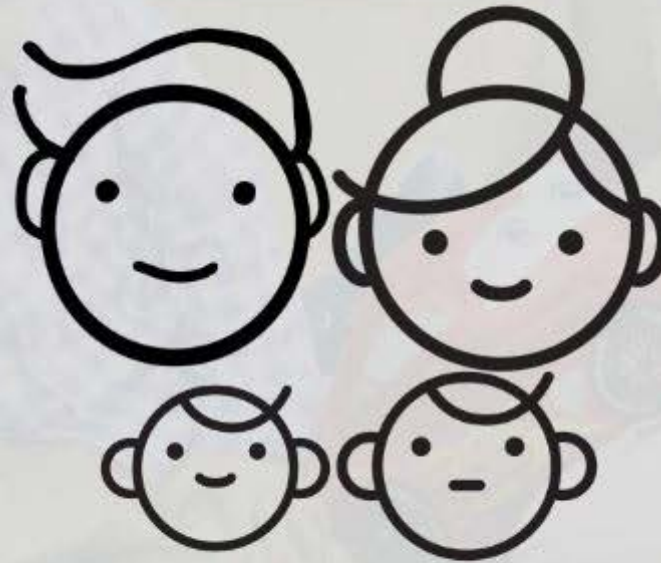
**Worse Birth &  
Life Outcomes**

Worse Education  
Opportunities

**Challenging Housing  
Environment**

Lower Life  
Expectancy

**Fewer Developmental  
Opportunities**



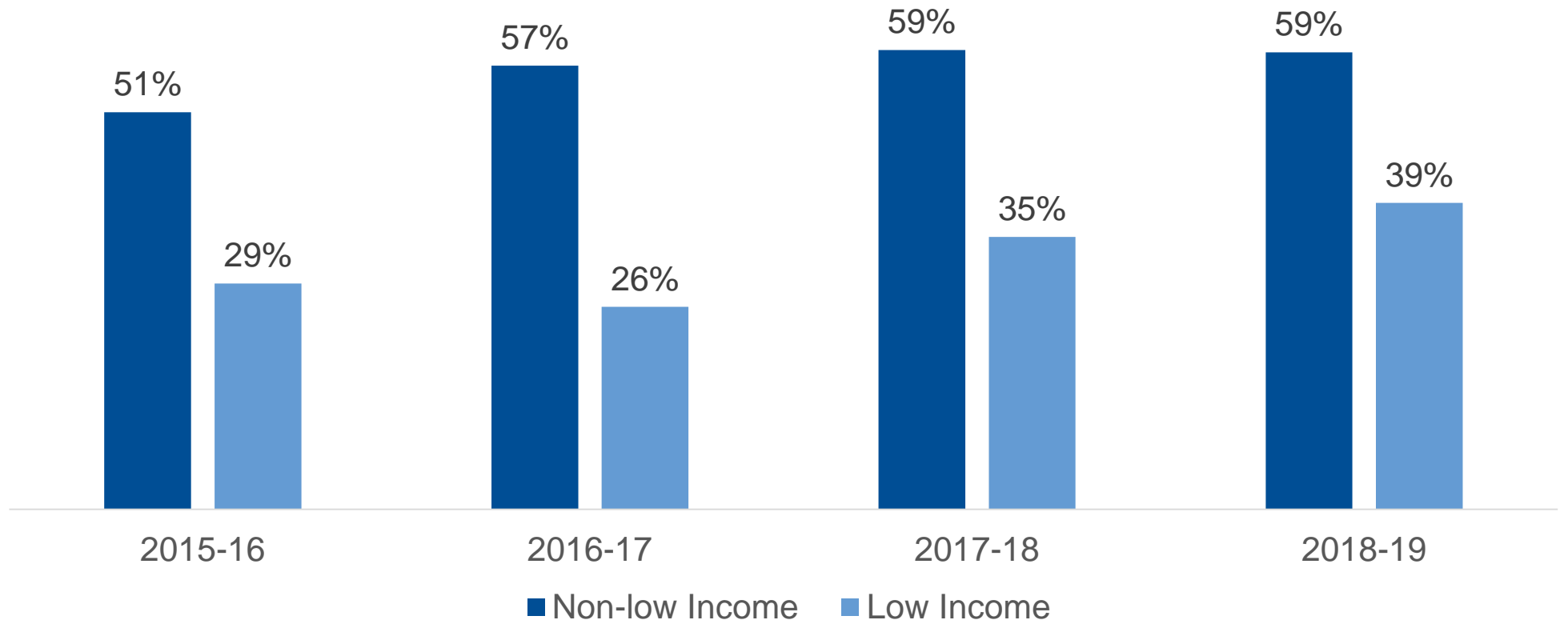
Challenging Neighborhood  
Environments

Constrained Social &  
Economic Mobility

**Increased Transportation  
Challenges**

**Toxic Stress**

# Percent of Children who are School Ready



# Disproportionality in Low Rates

Overall School Readiness				
	2015-16	2016-17	2017-18	2018-19
All Students	38%	41%	46%	49%
Non-low Income	51%	57%	59%	59%
Low Income	29%	26%	35%	39%

Asian	64%	67%	71%	40%
Black	36%	21%	35%	36%
Hispanic	31%	32%	37%	44%
White	50%	59%	61%	63%





LIVE UNITED

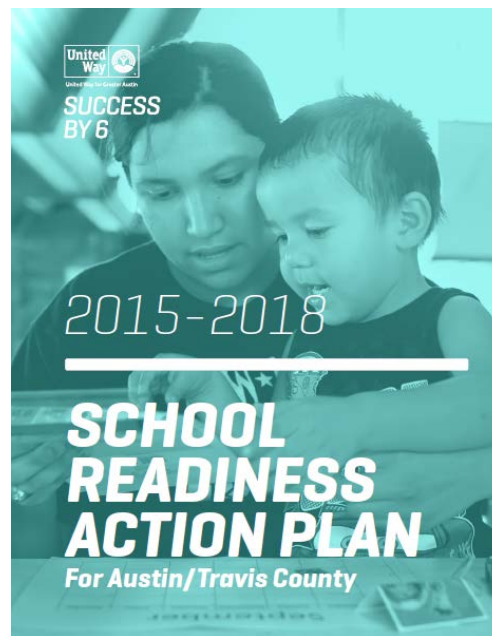
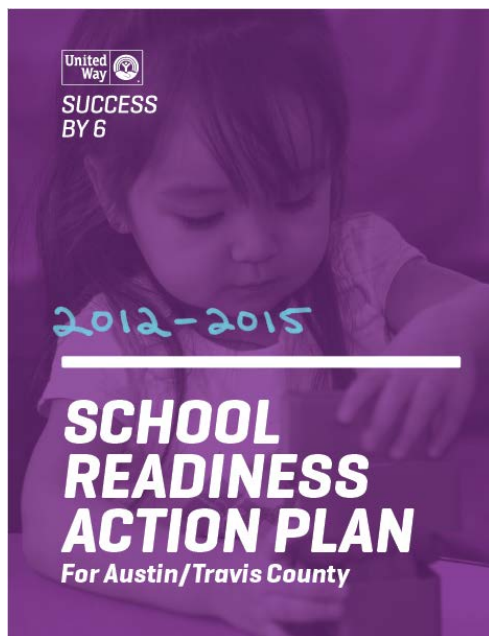
# Success By 6 Coalition Strategic Plan: A 2,000 Day Journey

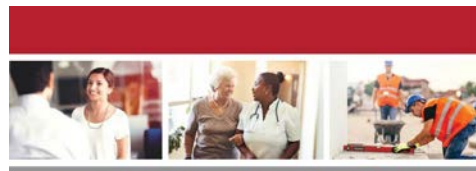
United Way for  
Greater Austin





# Success By 6 Coalition





**AUSTIN METRO AREA**  
MASTER COMMUNITY WORKFORCE PLAN  
JUNE 2017



## SUCCESS BY 6 ATX STRATEGIC PLAN

Strengthen *future* workforce

**VISION** | Public and private sectors in Austin/Travis County will work together to ensure that school readiness becomes and remains a top priority. By the time children enter kindergarten, they will have the cognitive, physical, social, emotional and language skills needed to thrive in an educational setting.

## MASTER COMMUNITY WORKFORCE PLAN

Strengthen *current* workforce

**VISION** | A workforce system that effectively engages employers, community-based organizations, and educational institutions, empowers residents to more efficiently match employers' skill needs and successfully prepares economically disadvantaged residents for family-sustaining careers.

## 2-GENERATION STRATEGIC PLAN

Connect efforts to strengthen  
*current and future* workforce

**VISION** | Policies and programs are designed, and their resources are aligned, to help parents improve educational skills and become economically stable, to strengthen parents' ability to be positive influences on their children's development, and to help children achieve their maximum potential by simultaneously addressing the needs of parents and children.



United Way for Greater Austin





SUCCESS BY 6  
AUSTIN/TRAVIS COALITION

# SX6 Coalition Leadership



United Way for Greater Austin



children's  
optimal health





UNITED WE FIGHT.  
UNITED WE WIN.

LIVE UNITED

# Framework



# Healthy Beginnings

**SX6 Goal:** To ensure all children receive early and regular developmental screenings and immunizations, and are linked to accessible and coordinated, integrated and responsive basic needs, medical, dental, and mental health services including services for children with developmental delays.

Preterm birth rates are highest for African American and Hispanic/Latino families.

- African American 13.5%
- Hispanic 7.11%
- White 9%
- Asian 6.2%
- More than one race: 5.8%



Many Hispanic families get no or late prenatal care:

- African American 22.3%
- Hispanic 21%
- White 15.8%
- Asian 10.7%

## Today in Austin

14,000 babies are born in Austin/Travis County each year.

# 95%

of families have physical, mental, or social-emotional health needs within the first few weeks of a baby's birth.

# 15%

of African-American infants born in Austin/Travis County are born early, and 13% are born at low birth-weight.

# 1 in 5

children under 18 experience food insecurity.

# Supported Families

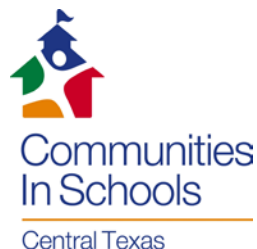
**SX6 Goal:** To ensure families have access to and use the resources that provide them with the knowledge, skills, confidence and social supports to positively nurture the health, safety, and development of their children, and to develop greater financial stability.

Commission Health & Human Services Report - Concerns raised apply to the barriers for families with young children feeling supported and having access to supports and services:

- **Language**
- **Cultural Awareness**
- **Trust (in government)**
- **Safety**
- **Myth of the Model Minority**
- **Isolated Communities**
- **Accessing Services**
- **Mobility**



**AFSSA**  
ASIAN FAMILY SUPPORT SERVICES OF AUSTIN



## Today in Austin

**33%**

of two-parent families with low income have both parents working.

**80%**

of single-parent families with low income are working and are still unable to meet their basic needs.

Only 8% of children 0-3 receive research- and evidence-based home visiting or parent-education services.

**1,200**

children younger than six are confirmed victims of child abuse or neglect.

# High Quality Care & Education

**SX6 Goal:** To ensure children and families are informed and able to access high-quality early learning environments that demonstrate positive developmental outcomes for all children (including children with unique developmental and cultural needs) through competent, responsive, and caring relationships.

## Challenges:

- State policies & practices that impact non-English speakers access to child care subsidy
- National Data: Asian American children have the lowest rate of access to child care subsidies – with only 3% of potentially eligible children served
- Lack of culturally congruent care

## Today in Austin

The cost of high-quality infant care ranges from \$15,000 per year on Austin's east side to \$20,000 on the city's west side.

**45%** of programs serving children from households with low income are high quality.

Child care workers earn \$10.67 to \$14.07 an hour, but our city's living wage is \$15.

**1 in 4**

potential students are served by Austin ISD Pre-K3, and children from families with low income who attend Pre-K are more than twice as likely to be school ready.



# Safe & Stimulating Communities

**SX6 Goal:** To ensure public and private sectors in Austin/Travis County work together to ensure that the community has the resources and infrastructure to deliver services to children and their families, and to provide a safe and healthy environment in which to raise children. .

## Challenges:

- Early Childhood is often invisible or forgotten between sectors of health and education.
- ECE system is inherently fragile and fragmented with disparate eligibility requirements because of funding streams, complicated by systemic inequalities.

## Opportunities:

- New relationships - Who is missing in our Coalition work?
- Redistribute public investment into early childhood sector to reduce inequity

**34%**  
of children under four from households with low income are receiving any early learning services at all.

Austin/Travis County invested

**\$220**

in early childhood last year per child under 6 from low-income households.

San Antonio invested **\$419** per capita

**\$935** per capita  
Denver budgeted

Portland spent **\$965** per capita

**\$1,141** per capita  
Philadelphia invested

more than 5x what Austin spends

# Priorities for SX6 Coalition

---

- SX6 Coalition participation in Beyond Diversity and Undoing Racism (Fall 2019)
- Establish Family Leadership Initiative to elevate community voice (Fall 2019)
- SX6 Leadership Team Strategy Sessions: Embedding an Equity Lens in Coalition and Strategic Planning (Jan. 2020)
- Evaluate Leadership Team composition to incorporate community voice (Feb 2020)
- Improve collection of disaggregated data to inform strategies and action steps (2020)
- Collaboration with ATX Quality of Life Initiatives (2020)
- Ensure a Complete Count in TX 2020





***Thank you***