

Salt & Time Salt & Time Cafe Design Intent

18 November 2019



FD2S INC.

1634 E César Chávez
Austin Texas 78702
512 476 7733
fd2s.com

© 2019 FD2S INC.

All rights reserved. The intellectual property, concepts,
and designs contained in this document are the exclusive
property of fd2s inc.

Neither the document nor the information it contains may
be copied, disclosed to others, or used in connection with
any work or project other than the specific project for
which it has been prepared and developed, without the
written consent of fd2s inc.

PROJECT NAME/PROJECT CODE

Salt & Time
Salt & Time Cafe
18SALT001

ISSUES/REVISIONS

24JUN2019	Schematic Design Review
01JUL2019	Revised Schematic Design
16JUL2019	Pricing Document
14OCT2019	Design Intent
18NOV2019	Final Design Intent

SALT & TIME

CAFFE



FD2S INC.

1634 E César Chávez
Austin Texas 78702
512 476 7733
fd2s.com

© 2019 FD2S INC.

All rights reserved. The intellectual property, concepts,
and designs contained in this document are the exclusive
property of fd2s inc.

Neither the document nor the information it contains may
be copied, disclosed to others, or used in connection with
any work or project other than the specific project for
which it has been prepared and developed, without the
written consent of fd2s inc.

PROJECT NAME/PROJECT CODE

Salt & Time
Salt & Time Cafe
18SALT001

ISSUES/REVISIONS

24JUN2019	Schematic Design Review
01JUL2019	Revised Schematic Design
16JUL2019	Pricing Document
14OCT2019	Design Intent
18NOV2019	Final Design Intent

PAGE TITLE / ELEMENT TYPE

Logo

SHEET NUMBER

2

Typography

ABCDEFGHIJKLMNOPQRSTUVWXYZ

abcdefghijklmnopqrstuvwxyz

1234567890!@#\$%&();:”,.?”

1 Font Set
Archer Book

ABCDEFGHIJKLMNOPQRSTUVWXYZ

abcdefghijklmnopqrstuvwxyz

1234567890!@#\$%&();:”,.?”

2 Font Set
Archer Medium

ABCDEFGHIJKLMNOPQRSTUVWXYZ

ABCDEFGHIJKLMNOPQRSTUVWXYZ

1234567890!@#\$%&();:”,.?”

3 Font Set
Archer Medium Small Caps

ABCDEFGHIJKLMNOPQRSTUVWXYZ

abcdefghijklmnopqrstuvwxyz

1234567890!@#\$%&();:”,.?”

4 Font Set
Archer Semibold



3 Type Size Measurement
No Scale

Typography Typography

Normal letterspacing is to be used on this project unless otherwise noted - in Adobe Illustrator, set kerning to "optical"

~~Typography Typography~~

Loose letterspacing is not to be used on this project unless otherwise noted - in Adobe Illustrator, set kerning to "optical"

~~Typography Typography~~

Tight letterspacing is not to be used on this project unless otherwise noted - in Adobe Illustrator, set kerning to "optical"

4 Letter and Word Spacing
No Scale

“Pool Depth 5'-2”

Please note the difference between foot/inch marks and apostrophe/quotation marks.

5 Typesetting
No Scale

Note

The typeface shown is used in this environmental graphics program. The font shown here is for reference only, and may not in any way be used as artwork. No font substitutions are allowed. Font names must match exactly for accurate execution of design; "LT Std" following a font denotes an OpenType font. Fonts are available for purchase through a variety of retailers, likely including:

- adobe.com/type
- fonthaus.com
- fonts.com
- typography.com
- linotype.com

Typography

ABCDEFGHIJKLMNOPQRSTUVWXYZ
ABCDEFGHIJKLMNOPQRSTUVWXYZ
1234567890!@#\$%&():;’”,.?’”

1 Font Set
Sackers Gothic Heavy

ABCDEFGHIJKLMNOPQRSTUVWXYZ
ABCDEFGHIJKLMNOPQRSTUVWXYZ
1234567890!@#\$%&():;’”,.?’”

2 Font Set
Sackers Gothic Medium



3 Type Size Measurement
No Scale

TYPOGRAPHY

Normal **letterspacing** is to be used on this project unless otherwise noted - in Adobe Illustrator, set kerning to "optical"

~~TYPOGRAPHY~~

Loose **letterspacing** is not to be used on this project unless otherwise noted - in Adobe Illustrator, set kerning to "optical"

~~TYPOGRAPHY~~

Tight **letterspacing** is not to be used on this project unless otherwise noted - in Adobe Illustrator, set kerning to "optical"

4 Letter and Word Spacing
No Scale

“POOL DEPTH 5'-2"”

Please note the difference between foot/inch marks and apostrophe/quotation marks.

5 Typesetting
No Scale

Note

The typeface shown is used in this environmental graphics program. The font shown here is for reference only, and may not in any way be used as artwork. No font substitutions are allowed. Font names must match exactly for accurate execution of design; "LT Std" following a font denotes an OpenType font. Fonts are available for purchase through a variety of retailers, likely including:

- adobe.com/type
- fonthaus.com
- fonts.com
- typography.com
- linotype.com



FD2S INC.
1634 E César Chávez
Austin Texas 78702
512 476 7733
fd2s.com

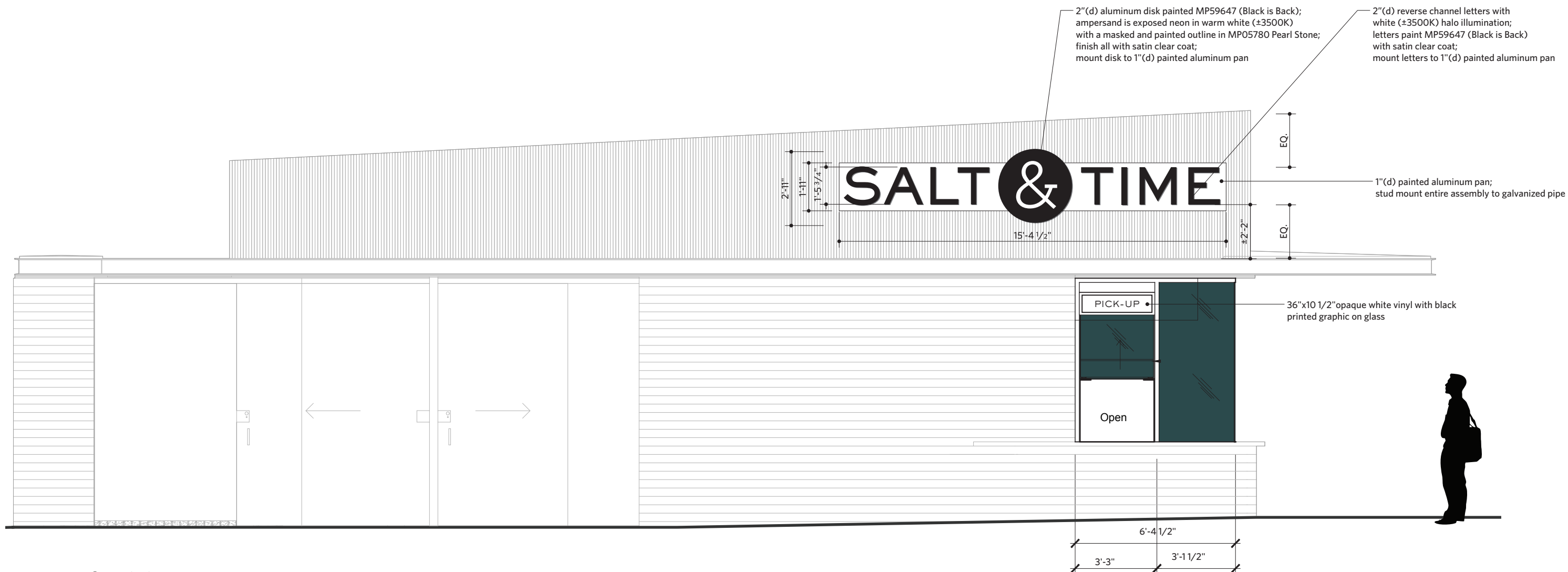
© 2019 FD2S INC.
All rights reserved. The intellectual property, concepts, and designs contained in this document are the exclusive property of fd2s inc.
Neither the document nor the information it contains may be copied, disclosed to others, or used in connection with any work or project other than the specific project for which it has been prepared and developed, without the written consent of fd2s inc.

PROJECT NAME/PROJECT CODE
Salt & Time
Salt & Time Cafe
18SALT001

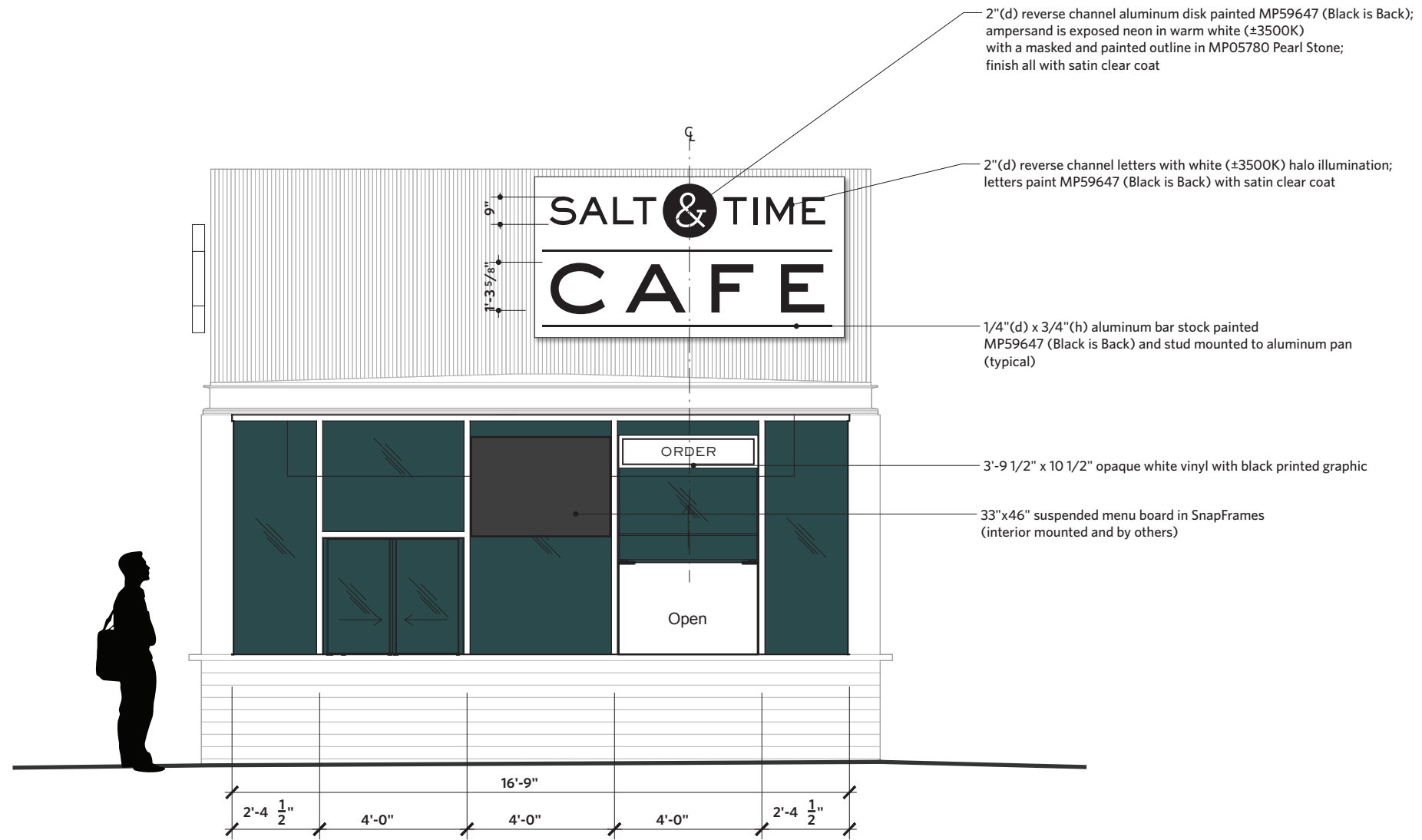
ISSUES/REVISIONS
24JUN2019 Schematic Design Review
01JUL2019 Revised Schematic Design
16JUL2019 Pricing Document
14OCT2019 Design Intent
18NOV2019 Final Design Intent

PAGE TITLE / ELEMENT TYPE
Typography
Sackers Gothic

SHEET NUMBER
4

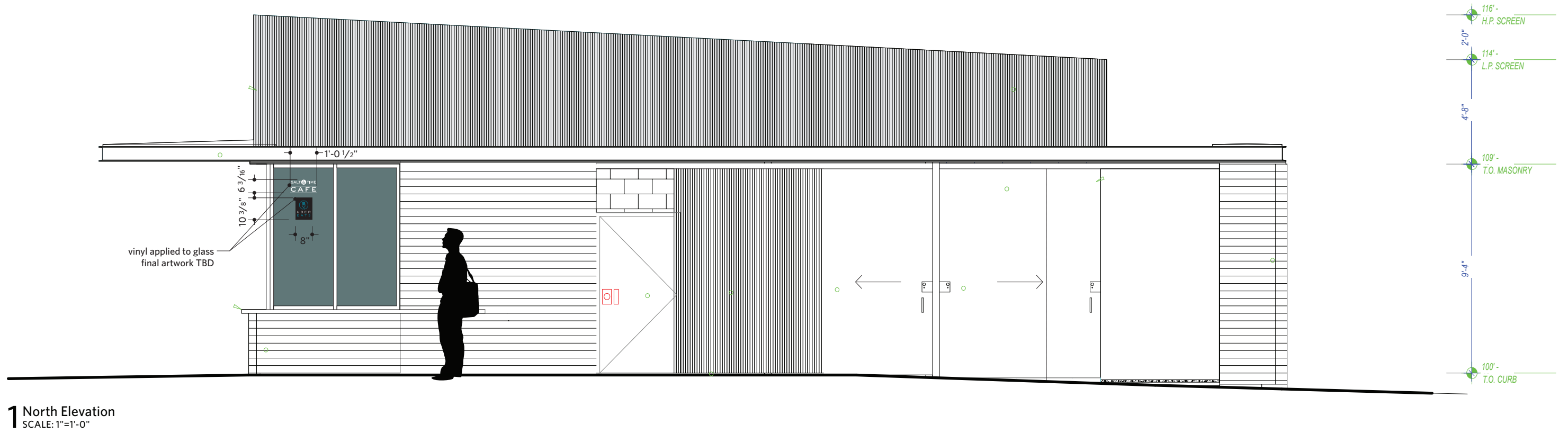


1 South Elevation
SCALE: 1"=1'-0"



1 West Elevation
SCALE: 1"=1'-0"





1 North Elevation
SCALE: 1"=1'-0"



FD2S INC.
1634 E César Chávez
Austin Texas 78702
512 476 7733
fd2s.com

© 2019 FD2S INC.
All rights reserved. The intellectual property, concepts, and designs contained in this document are the exclusive property of fd2s inc.
Neither the document nor the information it contains may be copied, disclosed to others, or used in connection with any work or project other than the specific project for which it has been prepared and developed, without the written consent of fd2s inc.

PROJECT NAME/PROJECT CODE
Salt & Time
Salt & Time Cafe
18SALT001

ISSUES/REVISIONS
24JUN2019 Schematic Design Review
01JUL2019 Revised Schematic Design
16JUL2019 Pricing Document
14OCT2019 Design Intent
18NOV2019 Final Design Intent

PAGE TITLE / ELEMENT TYPE
North Elevation

SHEET NUMBER

7