

**HISTORIC LANDMARK COMMISSION  
APRIL 27, 2020  
DEMOLITION AND RELOCATION PERMITS  
HDP-2020-0086  
200-06 E. 4<sup>TH</sup> STREET**

---

**PROPOSAL**

---

Demolish a ca. 1910 warehouse.

---

**ARCHITECTURE**

---

One-story, rectangular-plan, flat-roofed brick commercial warehouse building with a raised concrete loading platform along the south (4<sup>th</sup> Street) elevation. The building has single, rectangular fenestration in segmental-arched openings; all windows have been replaced with plate glass. Each window opening has a rectangular transom above, with a raised brick sill and lintel. Above the transoms is a belt course of raised brick, tapering from top to bottom; above the belt course is a flat-topped parapet with a tablet defined by raised brick. The building has a non-historic continuous metal awning along the south (4<sup>th</sup> Street) elevation; it replaced a historic metal awning. There is a modern, one-story rooftop addition to the building, set back from the exterior walls.

---

**RESEARCH**

---

Marks Grain Company, a wholesale and retail feed, hay, and grain business, built this building in phases as its warehouse. At the time the first section was built, around 1910, at the northeast corner of 4<sup>th</sup> and Brazos Streets, the remainder of the block eastward on 4<sup>th</sup> Street was still residential; the 1900 Sanborn map shows a line of relatively large houses along the north side of E. 4<sup>th</sup> Street. Marks Grain Company was established by brothers Harry and Charles Marks before the turn of the 20<sup>th</sup> century. The 1909-10 city directory, issued just prior to their construction of this building, shows Marks Grain Company at 406 Congress Avenue and their warehouse at the southeast corner of 3<sup>rd</sup> and Brazos Streets, a block south of the current building. Around 1912, their business address changed to 200-04 E. 4<sup>th</sup> Street, indicating an expansion to the building. No residences remained to the east of the building along E. 4<sup>th</sup> Street. By 1920, according to the city directory of that year, the business address for Marks Grain Company was 200-08 E. 4<sup>th</sup> Street, indicating an additional, and final expansion of the warehouse.

Both Harry and Charles Marks died in 1924, within a few months of each other. The business continued out of this building, with James S. Howse as the manager, until around 1931. Lolla Marks, the widow of Harry Marks, is listed as the president of the company in the 1932-33 city directory, the last that the company is listed. Between 1924 and 1931, the Marks successors began leasing out space in this building: to George Reichardt, a merchandise broker, from 1924 to 1928, and then to Wayland Rivers, who operated both the Texas Tobacco Company and Checker Front Grocery Company out of this building.

The 1935 city directory shows that the space at the corner of 4<sup>th</sup> and Brazos was serving as a warehouse for the Patton Transfer Company, while the space further

east housed the Checker Front Grocery warehouse. This arrangement remained until around 1936 when the Blatz Beer warehouse occupied the middle space between Patton Transfer on the corner and Checker Front on the east end of the building. Patton Transfer moved their warehouse out of this building around 1940; the space on the corner was then occupied by Sunset Freight Lines, while a flour mill occupied the middle space, and Checker Front remained to the east. Waylon Rivers was no longer listed as the proprietor of Checker Front; the business was run by a manager, Edward Westling, who eventually came to lead the company.

Sunset Motor Lines occupied the corner space as a warehouse until around 1950, when the space became a warehouse for E.M. Scarbrough & Sons, a downtown department store. The middle space continued to have a flour mill around 1948, when it became the warehouse for another wholesale grocery company. A wholesale food products company is listed in the 1949 city directory as occupying the space shown as 401-03 Brazos Street, the first time that address appears. Checker Front Stores continued to maintain its warehouse and office in the east end of the building until around 1960. Since the mid-1950s, the building has housed a variety of small businesses and warehouses, including an auto garage on the Brazos Street side, an electrical supply warehouse, and as warehouse space for Cabaniss-Brown Furniture Company. One of the more distinctive later businesses to occupy the space was Gordon Fowler's Caliente Chili, a manufacturer and wholesaler of chili spices in the late 1970s.

#### **STAFF COMMENTS**

---

The building is listed as 200-04 and 206 E. 4<sup>th</sup> Street, and as a Priority 1 for research in the Comprehensive Cultural Resources Survey (1984).

Staff has evaluated this building for designation as a historic landmark and has determined that the building may meet the criteria for landmark designation as set forth in City Code:

- a. **Architecture.** The building is a vernacular brick warehouse building that still retains its integral form if not all of its original materials. The building exemplifies the distinguishing characteristics of a warehouse, including its concrete loading platform along 4<sup>th</sup> Street. Utilitarian buildings that reflect and be identified as serving a use significant in the history of the city may qualify for landmark designation.
- b. **Historical association.** The building was constructed as a feed and grain warehouse, once a very important business in Austin; the company, Marks Grain Company, was one of the most prominent in the city, and operated here until it closed following the deaths of its proprietors (brothers) during the Depression. The building then became the office and warehouse of the Checker Front Grocery Stores, a franchise of self-serve supermarkets, from mid-1930s until around 1960. In mid-1970s, Gordon Fowler opened Caliente Chili, a manufacturer and distributor of chili and chili products, out of this building. The history of this building supports qualification under the criterion for historical association.

- c. **Archaeology.** The building was not evaluated for its potential to yield significant data concerning the human history or prehistory of the region.
- d. **Community value.** The building may possess a unique location, physical characteristic, or significant feature that contributes to the character, image, or cultural identity of the city, the neighborhood, or a particular demographic group. It is located along E. 4<sup>th</sup> Street, the spur line for the railroad, and represents the warehouses that used to line this street because of the proximity of the railroad. Very few of these rail-side warehouses remain in Austin.
- e. **Landscape feature.** The property is not a significant natural or designed landscape with artistic, aesthetic, cultural, or historical value to the city.




#### **STAFF RECOMMENDATION**

---

Strongly encourage rehabilitation and adaptive re-use. This is one of the very few remaining warehouse buildings in downtown Austin, and one of only two sites where the old loading platforms remain. Staff recognizes that the building has been modified with the replacement of original windows, doors, and awning, and the construction of a rooftop use, but urges the applicants to consider incorporation of this building into their development is feasible. If the Commission votes to release the permit, then staff recommends the completion of a documentation package consisting of HABS Level II drawings, photographs of all elevations, and a narrative history, for archiving at the Austin History Center prior to release of the permit.

# LOCATION MAP



-  SUBJECT TRACT
-  PENDING CASE
-  ZONING BOUNDARY

1" = 333'

## NOTIFICATIONS

CASE#: HDP-2020-0086

LOCATION: 204-06 E 4TH STREET

This product is for informational purposes and may not have been prepared for or be suitable for legal, engineering, or surveying purposes. It does not represent an on-the-ground survey and represents only the approximate relative location of property boundaries.

This product has been produced by CTM for the sole purpose of geographic reference. No warranty is made by the City of Austin regarding specific accuracy or completeness.



**200-12 E. 4<sup>th</sup> Street/401-03 Brazos Street  
ca. 1910**







2019 Google streetview photograph; all others taken 2008

## OCCUPANCY HISTORY

### 200-12 E. 4<sup>th</sup> Street/401-03 Brazos Street

City Directory Research, Austin History Center  
By City Historic Preservation Office  
November, 2008

1987	<b>200 E. 4<sup>th</sup> Street</b> Vacant
	<b>206 E. 4<sup>th</sup> Street</b> Vacant
	<b>401-03 Brazos Street</b> The addresses are not listed in the directory.
1977	<b>200 E. 4<sup>th</sup> Street</b> Vacant
	<b>206 E. 4<sup>th</sup> Street</b> Nunn Electric Supply Company William L. Collie, manager
	<b>401 Brazos Street</b> Caliente Chili Spices Gordon Fowler, president
1967	<b>200 E. 4<sup>th</sup> Street</b> Vacant
	<b>403 Brazos Street</b> Cabaniss-Brown Furniture Warehouse Hiram S. Brown, president NOTE: The store was at 201 E. 5 <sup>th</sup> Street.
1957	<b>200 E. 4<sup>th</sup> Street</b> Scarbrough's Warehouse
	<b>206 E. 4<sup>th</sup> Street</b> Checker Front Stores Offices and Warehouse Groceries Edward L. Westling, president and general manager
	<b>403 Brazos Street</b> Mueller & Benson Garage Auto repairs Dewey F. Mueller and James D. Benson, proprietors

- 1953      **200 E. 4<sup>th</sup> Street**  
E.M Scarbrough & Sons Warehouse
- 204 E. 4<sup>th</sup> Street**  
Jo-Mil Stores, Inc.  
Wholesale feed  
John T. Parker, manager
- 206 E. 4<sup>th</sup> Street**  
Checker Front Stores Offices and Warehouse  
Groceries  
Edward L. Westling, general manager
- 401-03 Brazos Street**  
The addresses are not listed in the directory.
- 1949      **200 E. 4<sup>th</sup> Street**  
Sunset Motor Lines  
The directory has no listing for Sunset Motor Lines.
- 204 E. 4<sup>th</sup> Street**  
Austin Distributing Company  
Wholesale groceries  
Coad Robinson, proprietor
- 206 E. 4<sup>th</sup> Street**  
Checker Front Stores Warehouse and Office  
Edward L. Westling, manager
- 403 Brazos Street**  
J&R Distributing Company  
Food products  
Melvin A. Richard, proprietor
- 1944-45      **200 E. 4<sup>th</sup> Street**  
Sunset Motor Lines  
Joseph J. Moritz, branch manager
- 204 E. 4<sup>th</sup> Street**  
Liberty Mills  
Arthur M. Scott, manager
- 206 E. 4<sup>th</sup> Street**  
Checker Front Stores Warehouse and Office  
Edward Westling, manager
- 401-03 Brazos Street**  
The addresses are not listed in the directory.
- 1941      **200-02 E. 4<sup>th</sup> Street**  
Sunset Motor Lines



Joseph J. Moritz, agent

**204 E. 4<sup>th</sup> Street**

Liberty Mills

Flour mills

Frank Reynolds, manager

**206 E. 4<sup>th</sup> Street**

Checker Front Stores Warehouse and Office

Edward Westling, manager

**401-03 Brazos Street**

The addresses are not listed in the directory.

1937

**200-02 E. 4<sup>th</sup> Street**

Patton's Inc. Warehouse

NOTE: Patton Transfer Company was located at 116 E. 7<sup>th</sup> Street.

**204 E. 4<sup>th</sup> Street**

Blatz Beer Distributors

George Mezzetti, proprietor

**206 E. 4<sup>th</sup> Street**

Checker Front Stores Warehouse and Office

Edward Westling, manager

**401-03 Brazos Street**

The addresses are not listed in the directory.

1935

**200-02 E. 4<sup>th</sup> Street**

Patton's Inc. Warehouse

NOTE: Patton Transfer Company was located at 116 E. 7<sup>th</sup> Street.

**206 E. 4<sup>th</sup> Street**

Checker Front Stores Warehouse and Office

Wayland C. Rivers, president

**401-03 Brazos Street**

The addresses are not listed in the directory.

1932-33

**200-02 E. 4<sup>th</sup> Street**

Marks Grain Company

Mrs. Lolla Marks, president

**206 E. 4<sup>th</sup> Street**

Texas Tobacco Company

Wayland C. and M. Leon Rivers, proprietors

Checker Front Stores Warehouse and Office

Wayland C. Rivers, president

**401-03 Brazos Street**

The addresses are not listed in the directory.

1930-31

**200-12 E. 4<sup>th</sup> Street**

Marks Grain Company  
J.S. Howse, manager

Texas Tobacco Company  
D.S. Bassist, manager

Checker Front Stores Office  
W.C. Rivers, manager

**401-03 Brazos Street**

The addresses are not listed in the directory.

1929

**200-12 E. 4<sup>th</sup> Street**

Marks Grain Company  
J.S. Howse, manager

George F. Reichardt & Company  
Merchandise brokers  
George F. Reichardt, proprietor

**401-03 Brazos Street**

The addresses are not listed in the directory.

1927

**200-12 E. 4<sup>th</sup> Street**

Marks Grain Company  
James S. Howse, manager

George F. Reichardt & Company  
Merchandise brokers  
George F. Reichardt, proprietor

**401-03 Brazos Street**

The addresses are not listed in the directory.

1924

**200-12 E. 4<sup>th</sup> Street**

Marks Grain Company  
Harrison L. and Charles J. Marks, proprietors

**401-03 Brazos Street**

The addresses are not listed in the directory.

1922

**200-08 E. 4<sup>th</sup> Street**

Marks Grain Company  
Grain, hay, and feed  
Harrison L. and Charles J. Marks, proprietors

**401-03 Brazos Street**

The addresses are not listed in the directory.

1920

**200-08 E. 4<sup>th</sup> Street**

Marks Grain Company  
Grain, hay, and feed  
Harry L. and Charles J. Marks, proprietors

**401-03 Brazos Street**

The addresses are not listed in the directory.

1918

**200-04 E. 4<sup>th</sup> Street**

Marks Grain Company  
Grain, hay, and feed  
Harry L. and Charles J. Marks, proprietors

**401-03 Brazos Street**

The addresses are not listed in the directory.

1916

**200-04 E. 4<sup>th</sup> Street**

Marks Grain Company  
Grain, hay, and feed  
Harry L. and Charles J. Marks, proprietors

**401-03 Brazos Street**

The addresses are not listed in the directory.

1914

**200-04 E. 4<sup>th</sup> Street**

Marks Grain Company  
Wholesale and retail grain, hay, and feed  
Harry L. and Charles J. Marks, proprietors

**401-03 Brazos Street**

The addresses are not listed in the directory.

1912-13

**200-04 E. 4<sup>th</sup> Street**

Marks Grain Company  
Wholesale and retail grain, hay, and feed  
Harry L. and Charles J. Marks, proprietors

**401-03 Brazos Street**

The addresses are not listed in the directory.

1910-11

**200 E. 4<sup>th</sup> Street**

Marks Grain Company  
Wholesale and retail grain, hay, and feed  
Harry L. and Charles J. Marks, proprietors  
NOTE: 204 E. 4<sup>th</sup> Street was listed as the home of Edith Cooper, an African-American woman, with no occupation stated.

**401-03 Brazos Street**

The addresses are not listed in the directory.

1909-10

The 200 block of E. 4<sup>th</sup> Street was residential.

*Have Hot Biscuits*  
IN THE MORNING



*Easy to  
Make*  
  
*Easy to  
Bake*

**RECIPE**

2 cups Flour, 2 Level  
Teaspoonsful baking Pow-  
der,  $\frac{1}{2}$  Teaspoonful Salt, 3  
Level Tablespoonful Lard.

Sift flour, baking powder and  
salt together, then work in the  
lard. Add milk sufficient to  
make a soft dough, then turn on  
a floured board and work just  
enough to get the dough in  
shape. Roll or pat out and cut  
with a biscuit cutter. Bake in  
hot oven—15 minutes will be  
sufficient.



**MARKS GRAIN CO.**  
DISTRIBUTORS  
Phone 6406—200 East 4th Street

Advertisement for the Marks Grain Company  
Austin American, April 7, 1926

## DEATH CLAIMS HARRY MARKS

**Austin Business Man Dies  
Suddenly.**

Harry I. Marks, 54, senior member of the firm of Marks Grain Company, died suddenly Monday evening at 10:15 o'clock after a severe heart attack. Earlier in the day he had been carried to his home from his office after a slight attack. Later in the day he was reported improving and although he had been in ill health for some time, his death was unexpected. Death occurred at the Marks home, 515 West Twenty-Third street.

Surviving the deceased are his wife, Mrs. Lolla Marks, and two daughters, Misses Laufa Eleanor and Dorothy Marks. One brother, Charles J. Marks, who was associated with him in business, also survives.

Marks was a prominent Mason, being a member of Hill City Lodge, No. 454 and of the Scottish Rite Masonic bodies. He was also a member of Ben Hur temple, Ancient Arabic Order Nobles of the Mystic Shrine.

Funeral services have not been set and arrangements will be announced Tuesday.

## MARKS FUNERAL SERVICE TODAY

**Will Be Held From Family  
Residence at 4 P. M.**

The funeral services of Harry I. Marks, Austin grain dealer, who died suddenly Monday evening, will be held at the family residence at 515 West Twenty-third street today at 4 p. m. Rev. E. R. Barnes of the First Methodist church will conduct the ceremony.

The active pall bearers will be Will Foite, Tom Isenhar, Louis Davis, Jim McTendon, Huston Caswell, Elmer Wroe. The honorary pall bearers are W. E. Armstrong, J. N. Houston, Dr. T. J. Houston, W. E. Long, Edwin Stebbins, Albert Wilkerson, James R. Hamilton, George Matthews, Sam Sparks, Harry Becker, Max Bender, J. F. Johnson, Arthur Skelley, W. L. Gillman, A. C. Bull, P. J. Lawton, John Butler, John Chiles, W. H. Caswell, Walter Wilcox, H. A. Wroe, Ed Robinson, Henry Robinson, Adolph Goldman, C. Heinenheimer, John Tobin, Fred Gannery, George Edwards, W. G. Bell, Chas. Egan, Geo. Shelley.

Funeral notice for Harry Marks  
Austin American, May 21, 1924

Obituary of Harry Marks, the owner of  
Marks Grain Company, the first  
business in this building.  
Austin American, May 20, 1924

### THE DEAD

**REICHARDT**—George F. Reichardt, 71, well known commission merchant of Austin, 50 years, died at his home, 806 West Fifth street, early Monday morning. He is survived by his widow, Mrs. Amelia Reichardt of Austin; two sisters and two brothers in Arkansas. The body will be taken to San Antonio Tuesday afternoon. Funeral services will be held from 108 Slocum street, San Antonio, Tuesday at 4 p. m.

Obituary of George F. Reichardt, who  
had a merchandise brokerage business  
in this building in the late 1920s.  
Austin Statesman, May 2, 1938

**GEORGE F. REICHARDT**  
The body of George F. Reichardt Monday was taken to San Antonio, where funeral services will be held from 103 Stocum street Tuesday at 4 p. m. with the Rev. F. G. Rosener of the St. Martin's Lutheran church of Austin officiating.

Funeral notice for George F. Reichardt  
Austin American, May 3, 1938

## Wayland Rivers Dead at Age 71

Wayland Coates Rivers, 71, vice president of the Elgin Standard Brick Company and a director of the Elgin National Bank, died Monday night at his home at 306 Enfield Road.

The well-known Austin and Central Texas businessman is survived by his widow, Mrs. LaRuth Smith Rivers; a son, Wayland C. Rivers Jr. of Austin; a sister, Mrs. H. R. Thornburg of Lachmont, N.Y.; two brothers, W. H. Rivers Jr. and Roy D. Rivers, both of Elgin, and two grandchildren.

The body is at Cook Funeral Home, where funeral arrangements are pending.

### Texan Killed In Wyoming

JEFFREY CITY, Wyo. (AP)—A charge from a seismographic oil drill hole killed A. M. Hendrix, 38, of Cleburne, Texas, Sunday.

He came to this area only a week ago to work for the Century Geophysical Service. The body was returned to Cleburne.

Obituary of Wayland Rivers, who operated the Checker Front Stores chain of grocery stores in Austin from this building from the early 1930s through the late 1950s.

Austin American, January 27, 1959

### WAYLAND C. RIVERS

Funeral services for Wayland Coates Rivers will be held at 10 a.m. Wednesday at Cook Funeral Home Chapel with Dr. Marvin Vance officiating. Pallbearers will be Jack McKay Jr., Austin, C. B. Maynard of Bastrop, Bill Rivers, W. H. Rivers III, Roy D. Rivers Jr., J. K. Prewitt, Ray Arbuckle Jr., all of Elgin, and George S. McCall, Austin. Burial will be in Elgin Cemetery.

Funeral notice for Wayland C. Rivers  
Austin American, January 28, 1959



Ed Luther Westling

Ed Luther Westling, 88, of Austin died Saturday, September 21, 1966.

He was born November 21, 1907, in New Sweden, Texas. He married Frances Ohlson on September 3, 1931, at Gethsemane Lutheran Church at 16th and Congress Avenue.

At an early age he moved to Austin and held various jobs in the grocery business. He became general manager of Piggly Wiggly stores in Austin, and later was president and general manager of Checker Front Stores Inc., where he served from 1935 to 1966. He then owned Westling Minimax in Hyde Park for nearly 20 years, retiring in 1965.

He was a 57 year member of Austin Kiwanis Club. He was also a lifetime

member of Gethsemane Lutheran Church, and served as Chairman of the Board of Trustees and also the Task force for the Future.

He is survived by his wife of 65 years, Frances Ohlson Westling of Austin; two sons, Eddie of Austin, and Robert and wife, Patricia, of Del Rio. Also by two grandchildren, Steve and John Westling of Austin; several step-grandchildren, Lee and Eirik Farrell of Del Rio and Heather, Matthew and Corey Farrell of Grand Forks, North Dakota; and also many nieces and nephews throughout Texas.

Funeral services will be held at 11:00 a.m. Tuesday in the Gethsemane Lutheran Church, 200 W. Anderson Lane, with Pastor Karl A. Gronberg officiating. Burial will be in Oakwood Cemetery Annex.

Pallbearers will be Phil Nelson Jr., Clarence Lucas Sr., Terry Raven, Lex Ott, Lyle Larson and Oliver Nelson.

Honorary pallbearers will be all loving nieces and nephews and all former employees of Checker Front Stores and Westlings Minimax.

Memorial contributions may be made to the Gethsemane Lutheran Church Memorial Fund.

Arrangements by Weed-Corley-Fish  
Funeral Home 2195 N. Lamar 459-8811

Obituary of Edward Westling, the manager of the Checker Front Stores, who had their offices and warehouse in this building from the mid-1930s through the late 1950s.

Austin American-Statesman,



September 23, 1996



**ED. L. WESTLING**, General Manager - Checker Front Stores, Austin. Mr. Westling has been general manager of the Checker Front Stores, a local grocery chain in Austin, since 1936.

The stores were organized about 1927, the first one being located at 1917 E. 6th St., Austin; it was one of the first self-service stores in this section of the state, employing only a few people. At present, nine self-service stores are in operation in Austin, employing over 100 persons.

Mr. Westling was born on Nov. 21, 1907, in Manor, Texas, the son of Mr. and Mrs. O. C. Westling; his father was a merchant, operating a retail grocery and general merchandise store near Manor. He attended public school in Austin and Austin High School and later completed a course in business training. His first job was working with his father during his school days.

In 1926 he began work for an Austin grocery store chain, working up through the ranks to general manager. In 1936 he assumed his present position with the Checker Front stores.

He was married on Sept. 3, 1931, to the former Francis Ohlson of Brady, Texas; they have two children: Eddie H. and Robert.

Mr. Westling is a member of the Austin Chamber of Commerce, the Austin Country Club and is a past director of the local Kiwanis Club. Mrs. Westling is a member of the Kians and is active in church work at the Gethsemane Lutheran Church.

Hobbywise, Mr. Westling prefers fishing, also enjoys bowling and golf.

Biography of Edward Westling, the manager of Checker Front Stores  
Central Texas Business and Professional Directory, 1952

HISTORIC LANDMARK COMMISSION  
MARCH 23, 2020  
DEMOLITION AND RELOCATION PERMITS  
HDP-2020-0086  
204 E. 4<sup>TH</sup> STREET

		<b>CHECKER FRONT STORES</b> <b>QUALITY FOODS AT MONEY</b> <b>SAVING PRICES. FRI., SAT. and MON.</b>		<b>AMERICAN BAKERIES</b> In Checker Front Stores 1501 San Jacinto St. 710 West 6th St. 4015 Guadalupe St. 504 West 19th St. Large Popen-Topped BUTTER ROLLS 3 for 10c LARGE CHERRY PIES 19c Each SPECIAL EVERY DAY HOME-MADE BREAD 2 Loaves 15c CHOCOLATE and BUTTER COOKIES 9c Dozen
<b>SHORTENING</b> Vegetole 4 lb. ctn. .... 55c 1 lb. ctn. .... 14c		<b>FLOUR</b> Pioneer 12 lb. sack. .... 51c High Patent 24 lb. sack. .... 95c 48 lb. sack. .... \$1.83 PIONEER, 5 lb. bag. .... 33c CORN MEAL, 10 lb. bag. .... 23c PILLSBURY Sno-Sheen Cake Flour, pkg. .... 28c PILLSBURY PANCAKE FLOUR, reg. pkg. .... 9c		AUN-MAID PUFFED RAISINS, 15 oz. pkg. .... 84c COCOA, Bakers, 1 lb. can. .... 11c BROWN'S SALTINE FLAKES, 1 lb. pkg. .... 9c
<b>PEACHES</b> DEL MONTE No. 2 1/2 can. .... 16c EVANGELINE Strawberry Preserves, 1 lb. jar. .... 14c <b>CORN</b> PIONEER No. 2 can. .... 84c OLMITO STRING BEANS, No. 2 can. .... 84c		<b>PINEAPPLE</b> DEL MONTE No. 2 can. .... 15c CATSUP, 14 oz. bot. .... 14c <b>HOMINY</b> VAN CAMP No. 2 1/2 can. .... 8c DEL MONTE ASPARAGUS, No. 1 Picnic cans. .... 14c		<b>VAN CAMP PEAS</b> No. 1 can. 9c No. 2 can. 12c VAN CAMP TOMATO JUICE, 14 oz. can. .... 7c <b>TOMATOES</b> STANDARD 4 No. 1 cans. .... 19c
<b>FRUITS &amp; VEGETABLES</b> Fancy Wisconsin APPLES, 163s, doz. .... 19c ORANGES, Texas 150s, doz. .... 21c GRAPEFRUIT, 80s, large, doz. .... 30c BANANAS, Golden Ripe, doz. .... 17c CABBAGE, Hard, Green, Lb. .... 24c LETTUCE, large head. .... 6c CARROT, BEETS, MUSTARD, ONIONS AND TURNIPS, 3 bunches .... 10c Potatoes Colorado U.S.N. # 10 19c		<b>MEAT MARKETS</b> SELECT QUALITY MEATS, ALWAYS TENDER Decker's Butter Ball PICNIC HAMS, lb. .... 24c TONY DEET and Yea SHOULDER ROAST, lb. .... 14c HEAVY BRISKET and SHORT RIBS, lb. .... 11c GROUND MEAT Extra Quality, 2 lbs. .... 25c DECKER'S TALL KORN BACON, No Rind, lb. .... 34c FAMILY STYLE STEAK, Always Tendered, lb. .... 15c FRESH PORK SHOULDER ROAST, whole or half, lb. .... 23c LEAN LOIN PORK CHOPS, lb. .... 27c Plenty Lamb, Fully Dressed		COFFEE PLEASANT CUP 1 lb. pkg. .... 21c STATE HOUSE 1 lb. pkg. .... 25c GRAPENUT FLAKES, Pkg. .... 10c <b>COFFEE</b> Red Stripe Rio, 1 lb. pkg. 15c Blue Stripe Pberry, 1 lb. pk. 15c GUSTO, Almond or Lemon WHITE KING, 3 cakes. .... 11c <b>P&amp;G SOAP 10</b> Regular 27c <b>OXYDOL</b> Large Medium package

Advertisement for Checker Front Stores, Austin Statesman, January 10, 1936

	The Checker Front Stores are glad to announce that they are sponsoring a team in the Soft Ball Tournament that is now in progress. It is a game of plenty of thrills, exciting, interesting, and we invite your attendance.
--	---

Checker Front Stores sponsored a softball team  
Austin American, April 8, 1937

- 3.) Marks Grain Company Warehouse (1910)  
 401 Brazos Street  
 Adaptive Use: Headquarters, Caliente Chile, Inc.  
 Preservationists: Ann Fowler and Gordon Fowler

This old warehouse in downtown Austin is a fine example of how an empty old building can be brought back to life and can contribute to the Austin economy. Used for many of its early years as the Marks Grain Company Warehouse, the structure later served as a Cabaniss-Brown furniture warehouse. When Ann and Gordon Fowler, children of humorist-newsman Wick Fowler, discovered it, it was in the trust department of a local bank, from which they now lease it. Some old tires were about its only occupants.

Today, the building is headquarters of fast-growing Caliente Chile, Inc., which was founded by Wick Fowler and his kids to make and market Two-Alarm Chili. Some 25 employees work there now, and taco mix and bean mix have been added to the product line. From Wick's first chili cookoff in Terlingua against H.C. Allen, some 80 chiliapiads have developed across the U.S., and Two-Alarm Chili is sold widely.

Ann and Gordon Fowler had the building's Austin common brick walls cleaned. Floors are "2 by" pine, honeycolored, with Indian design area rugs here and there. 14 foot ceilings, weathered wood look stain, hand-crafted simple desks, period artifacts and paintings, an old caboose stove given them by Bob Ogden, Mondo Crouch's retired chair hanging on a wall, a barber chair, etc. etc. contribute to the early Texas look of the interior.

Ann Fowler has worked in business since the beginning. Mrs. Gordon Fowler,

Shari, is a potter and a UT graduate student in art. Tom Nall, who will accept the award if the Fowlers are out of state, is vp for marketing. From Dallas, he is a marathon runner and is in the Guinness (sp?) Book of Records for eating the most flour tortillas at one time. Jan Scott is an employee, also.

Unless the Plumbing is done in strict accordance with City Ordinances, do not turn on the water.

**PERMIT FOR WATER SERVICE** Austin, Texas N°A 3048

M. Marks Grain Warehouse Address 206 E. 4th

Plumber Geo. L. Martin Size of Tap 1/2" Date 2-26-30

Foreman's Report.

Date of Connection	3/4/30	Size of Connection	3/4"
Size of Tap Made	3/4"	Size Service Made	3/4"
Size Main Tapped	1/2"	From Front Prop. Line to Curb Cock	2' 6"
Location of Meter	2' 6"	Type of Box	2' 6"
Depth of Main in St.	2' 6"	" " Service Line	2' 6"
From Curb Cock to Tap on Main	9' 6"	Checked by Engr. Dept.	4-3-30

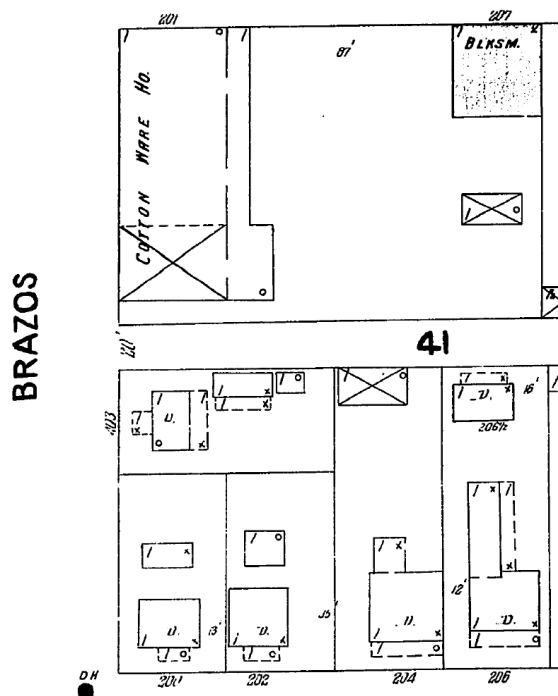
INDEXED

Foreman's Signature [Signature]

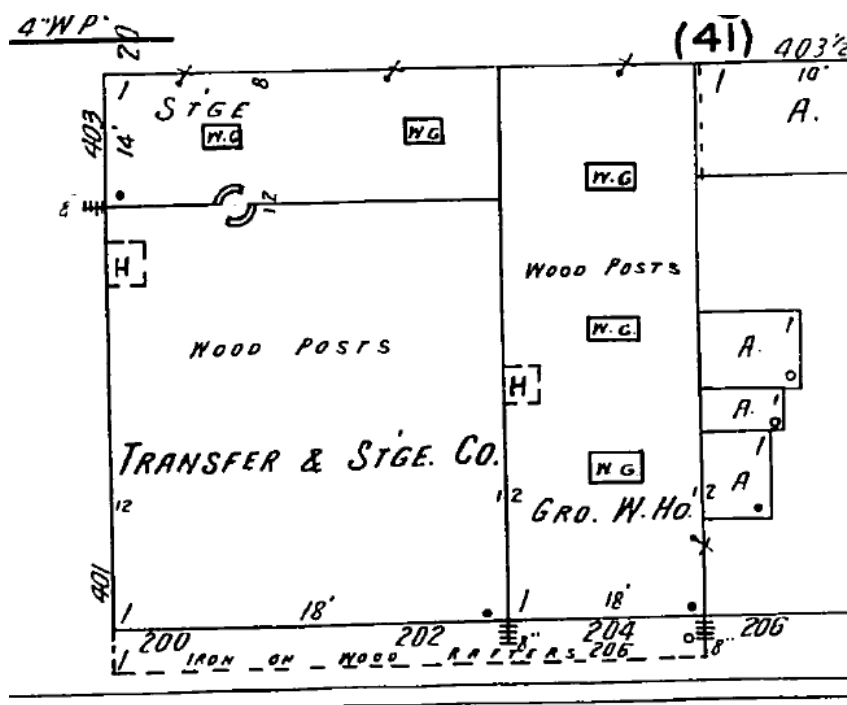
Water service permit (1930)

Sewer service permit to Mr. Marks (1930)

Building permit to repair the loading dock (1941)

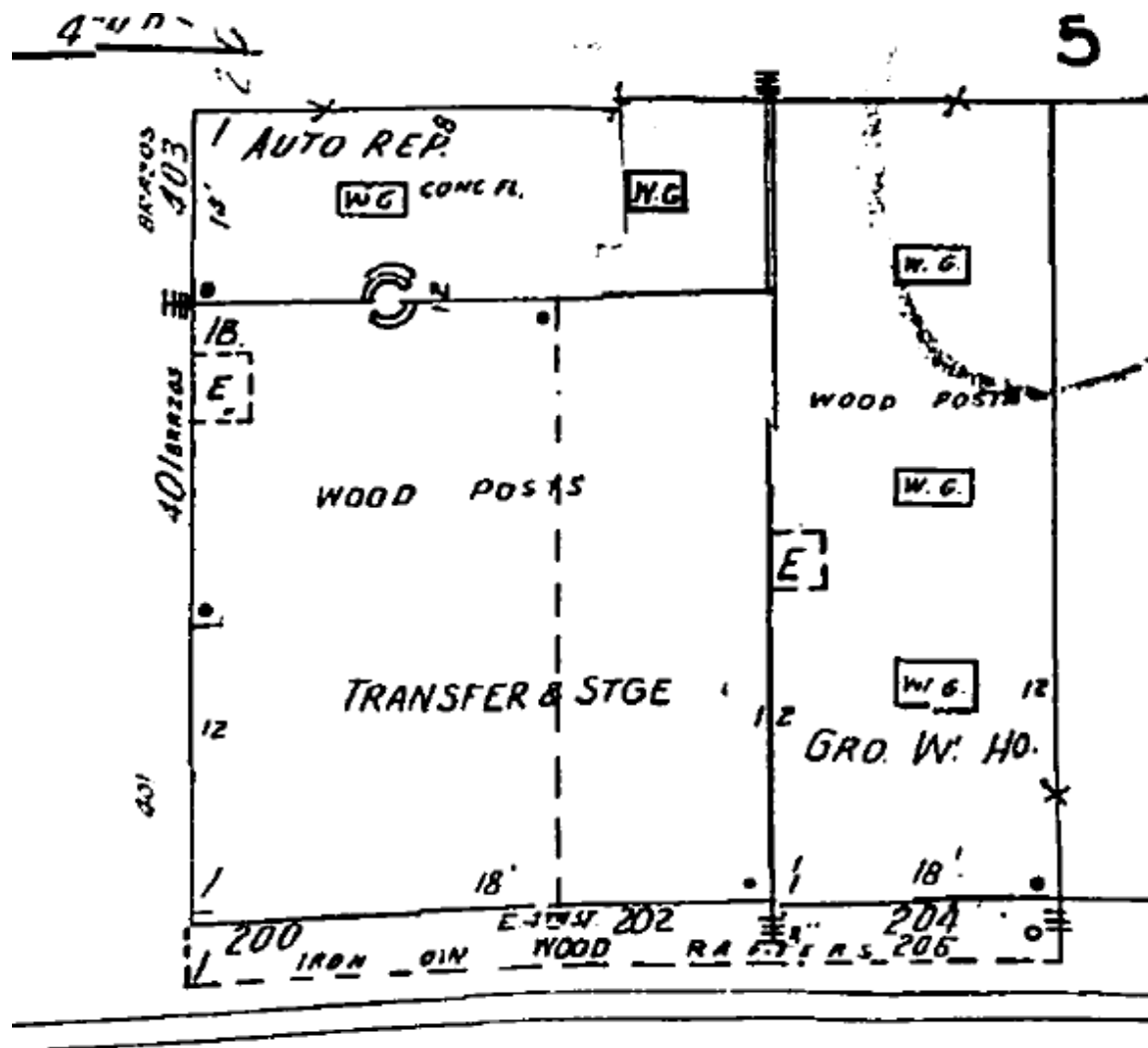


The 1900 Sanborn map shows houses along the north side of E. 4<sup>th</sup> Street between Brazos and San Jacinto (bottom of map). There was a cotton warehouse across the alley to the north.



The 1935 Sanborn map shows the current building with addresses of 200-02 E. 4<sup>th</sup> Street and being used as a transfer and storage warehouse. City directories show that Patton's Transfer used this building as a warehouse in the mid-1930s. At 204 E. 4<sup>th</sup> Street is a grocery warehouse, corresponding to the warehouse and office of Checker Front Stores, a grocery chain. Note the small attached outbuildings along the east (right) wall of the building. Note the

area shown as 403 Brazos Street, separated off from the 200-02 space at the corner, and listed as a storage building.



The 1961 Sanborn map shows the current building used as a transfer and storage warehouse, with the northern section of the building being used for auto repair, and the eastern part of the building as a grocery warehouse. In the late 1950s and early 1960s, Scarbrough's maintained a warehouse here; there was an auto repair shop at 403 Brazos Street, and Checker Front Stores had their office and warehouse at 206 E. 4<sup>th</sup> Street.