

Master Plan for John Treviño Jr. Metropolitan Park at Morrison Ranch

Land, Facilities, and Programs Committee

Request for Recommendation to the Parks and Recreation Board

Charles Mabry, Associate Project Manager, PARD

David Malda, Principal, GGN

May 15, 2020



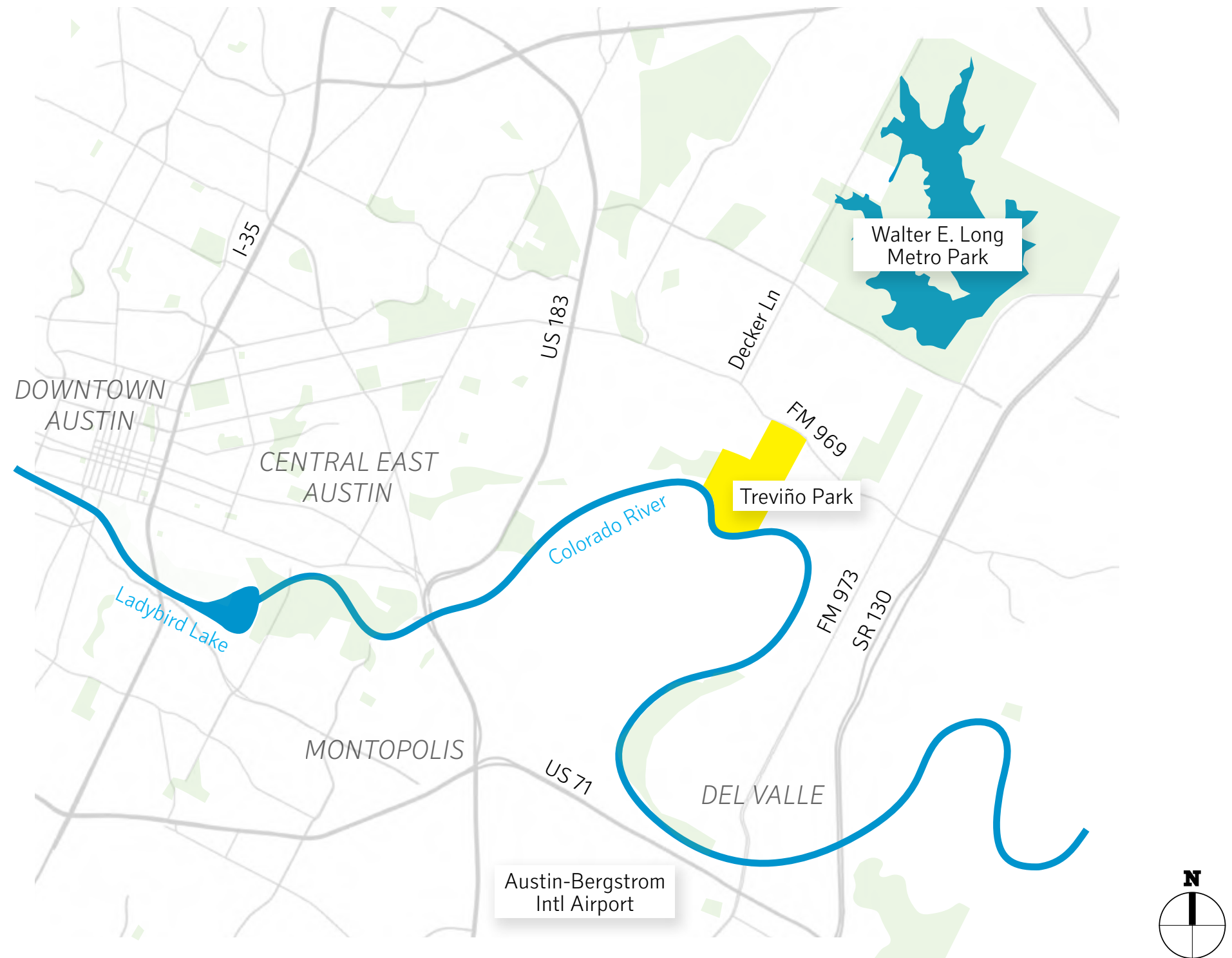
GGN

Park Context

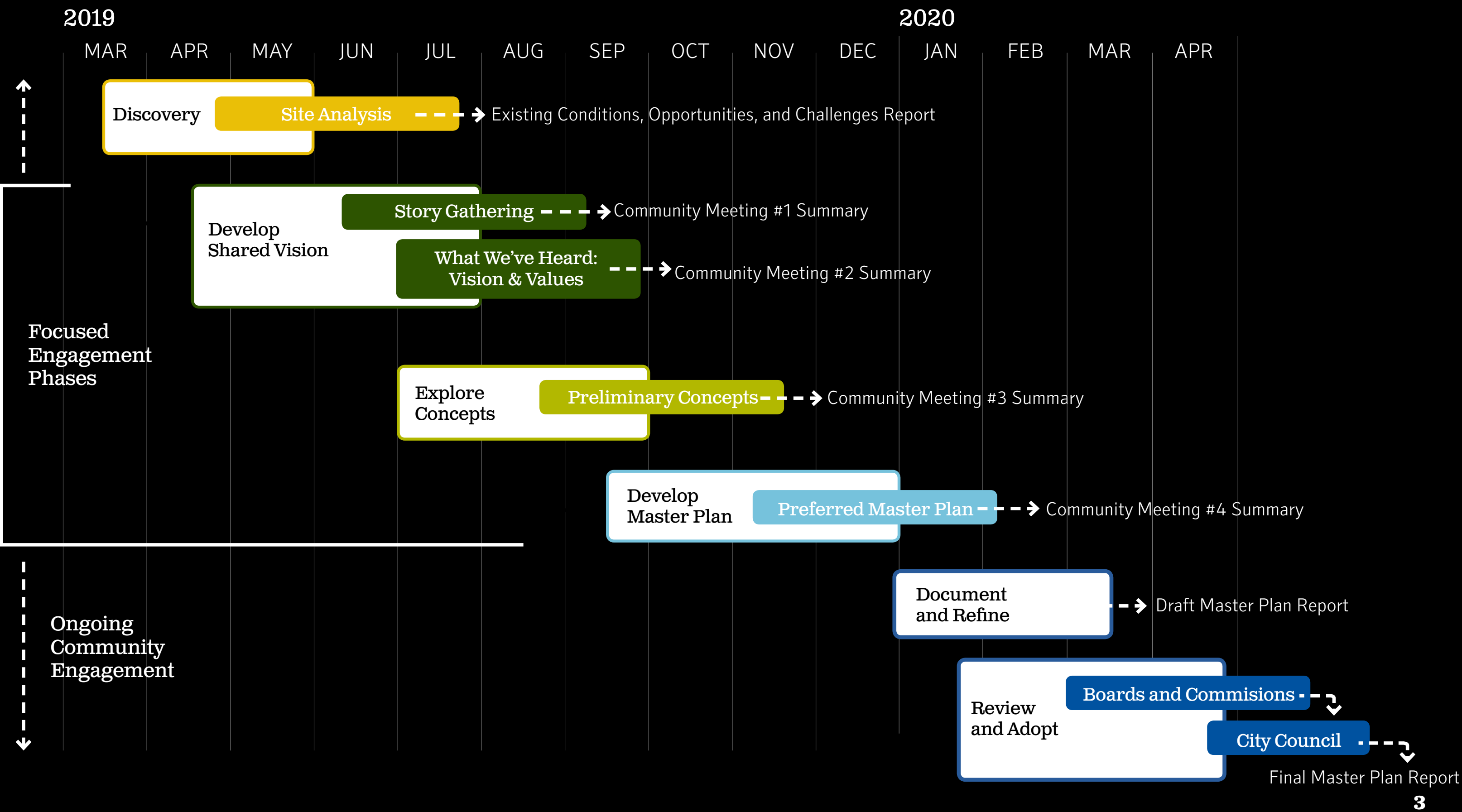
- 2003: Purchased by PARD
- 2006: Named after John Treviño Jr., former Council Member and Mayor Pro Tem
- 330 acres of former ranch
- 5,000 feet of Colorado River frontage
- 2/3 of the site lies in the 100-year floodplain
- Located at 9501 FM-969 between US-183 and TX-130



John Treviño Jr. at City of Austin park dedication in 2016 (Image credit: BetoATX)



Master Plan Schedule



Public Engagement: Approach

Meetings and Events

- 4 community meetings (two on-site at Treviño Park)
- 11 Small Group Discussions
- 3 Technical Advisory Group (TAG) Meetings

Surveys

- 3 community surveys (digital and print in English and Spanish)

Individual outreach

- Engagement with individuals, 16+ organizations, 3 neighborhood associations, and 5 local schools
- In-person outreach in East Austin: 3 school events, 5 neighborhood/organization events, and 5 church services



July 8 community meeting nature talk + hike



December 7 community meeting with organization partners

Public Engagement: Listening

1) Site, parks, and your story

- Connection to place
- Notes & postcards
- Oral histories
- Survey: 398 respondents (41% responses from neighboring zip codes*)

2) What we heard

- Park Vision and Values
- Opportunity to share feedback to date and confirm understanding of community goals

3) An ideal day at Treviño Park

- Site character, activities, design concepts
- Survey: 222 respondents (33% responses from neighboring zip codes*)

4) Early phase priorities

- How does the park grow?
- Community building with potential partner organizations
- Inauguration of Community's Walk
- Survey: 428 respondents (31% responses from neighboring zip codes*)

Community Priorities:



* Neighboring zip codes to the park: 78721, 78724, 78725

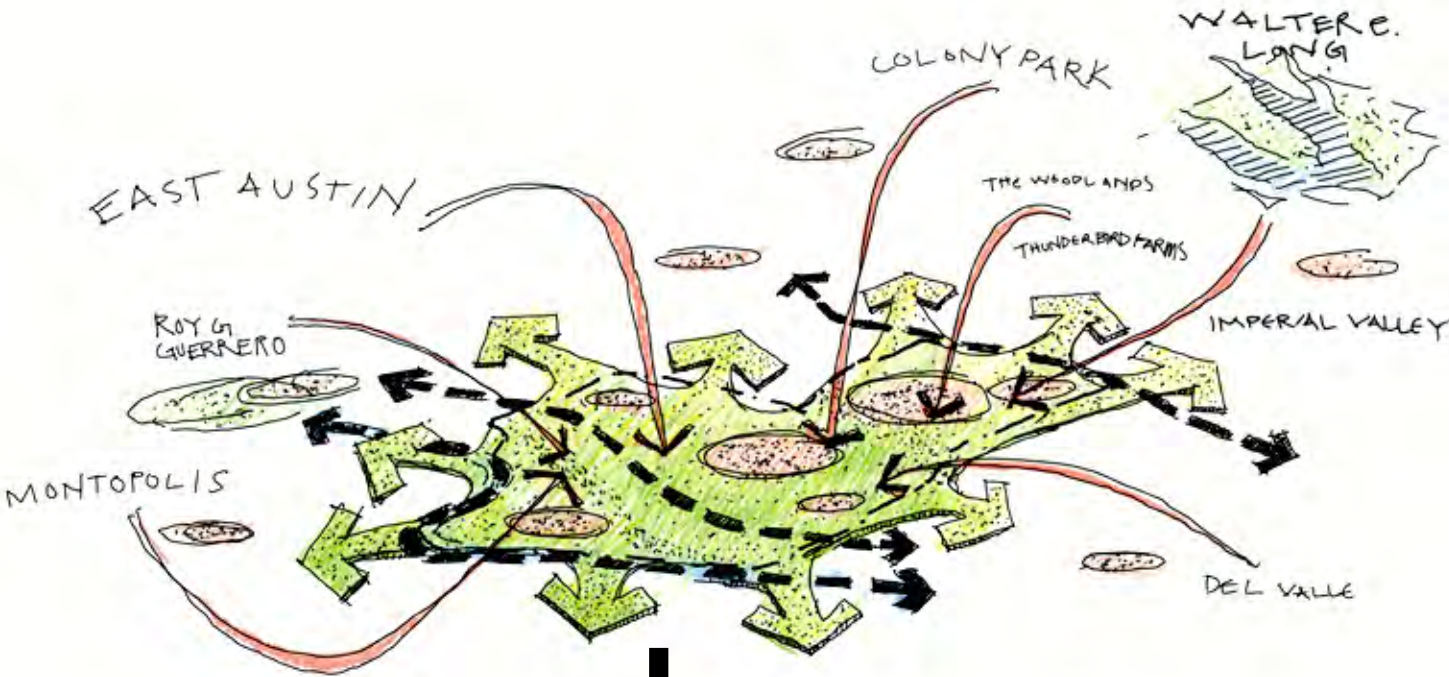
Three Primary Values

what we've heard

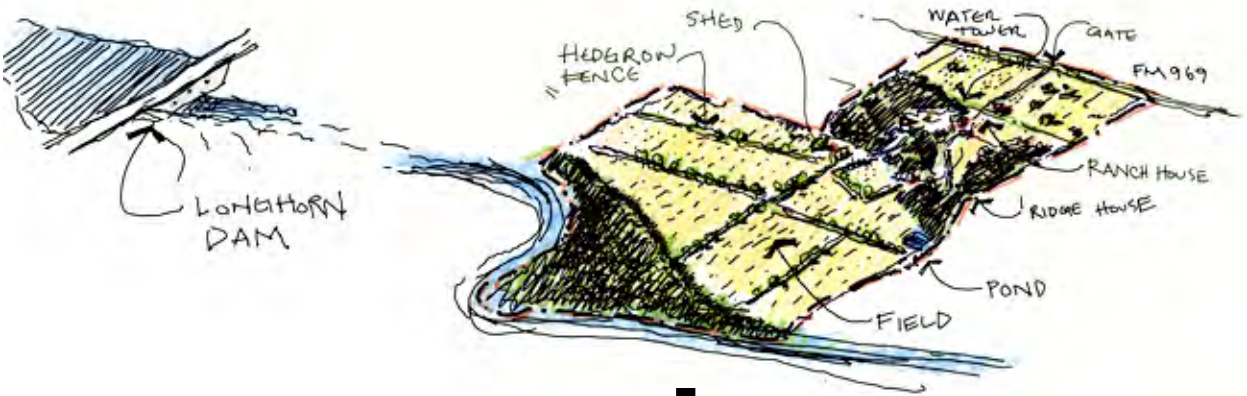
1 Advance Community through the Legacy of John Treviño Jr.

2 Adapt the Heritage of the Site

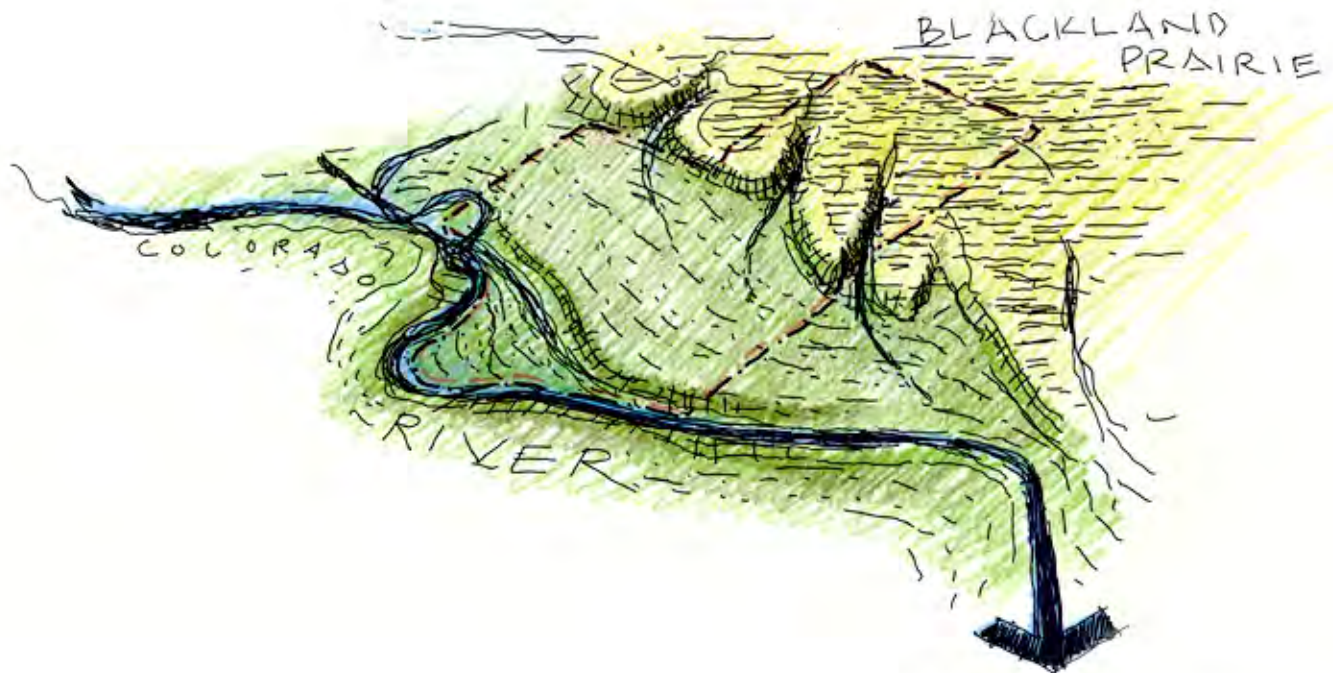
3 Engage the Intersection of Prairie and River



+



+



Overall Master Plan



The Field

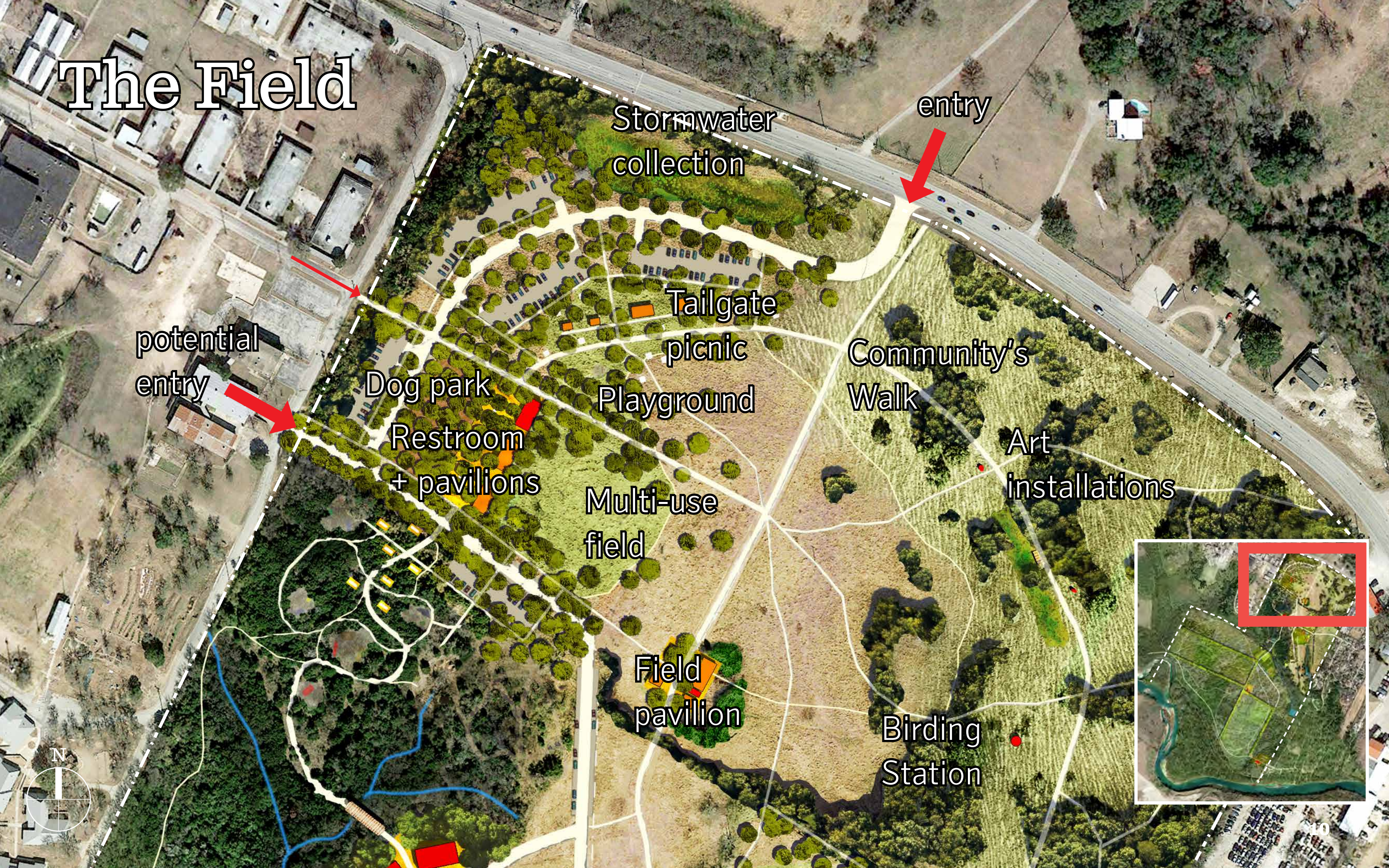


The Field: Wildflower Meadow + Picnic



- ① post oak restoration
- ② wildflower meadow
- ③ field pavilion
- ④ Community's Walk
- ⑤ barn + water tower
- ⑥ multi-use field
- ⑦ tailgate picnic pavilion⁹

The Field



Stormwater
collection

entry

potential
entry

Dog park

Restroom
+ pavilions

Tailgate
picnic

Playground

Community's
Walk

Art
installations

Multi-use
field

Field
pavillion

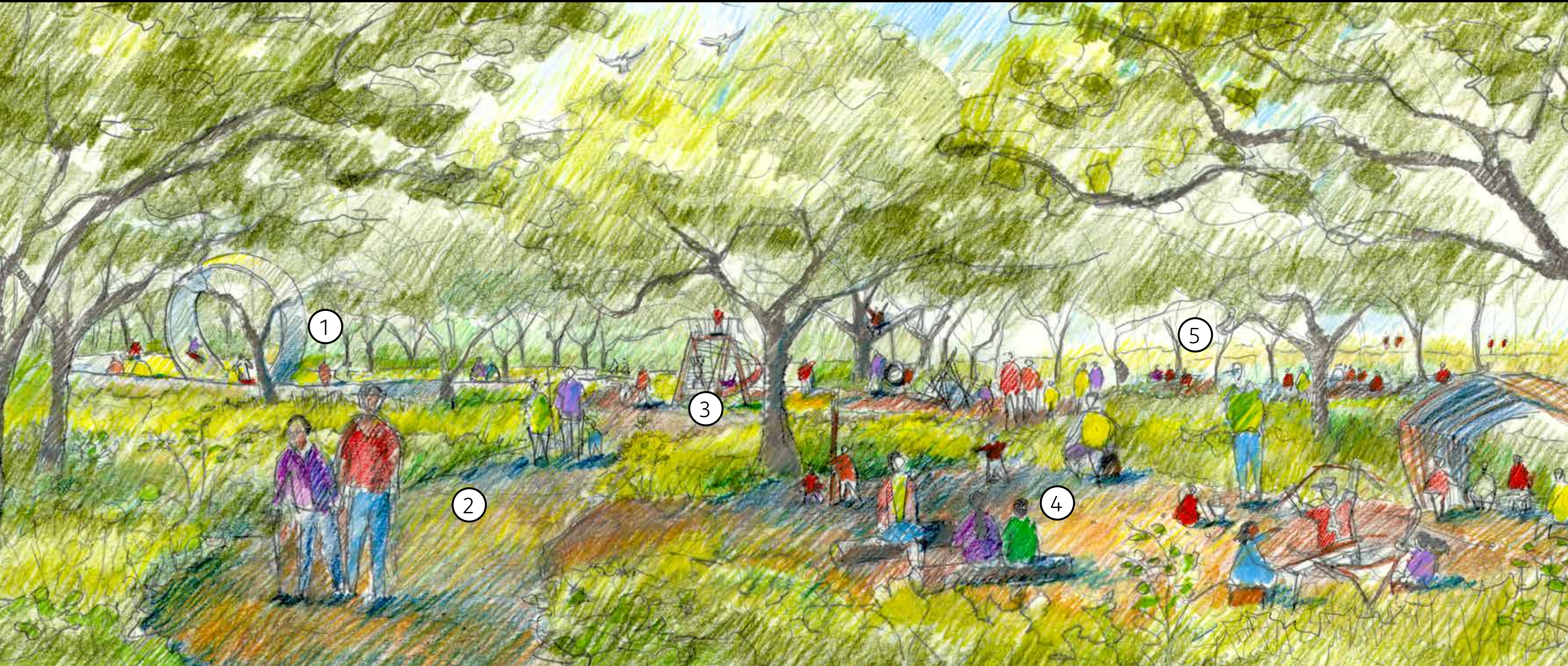
Birding
Station



The Ravine

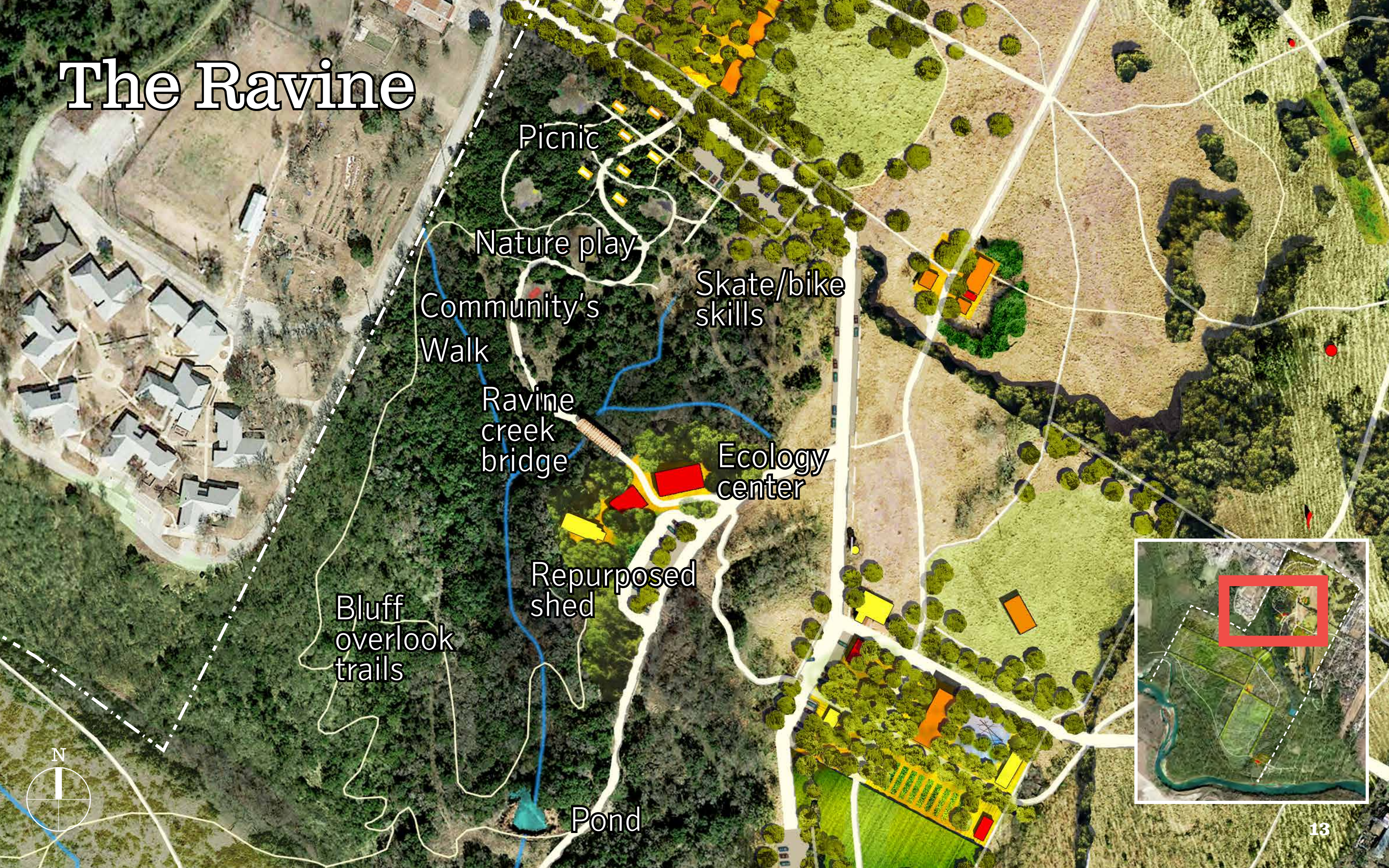


The Ravine: Forest Trails + Nature Play



① skate park ② Community's Walk ③ nature play ④ environmental education ⑤ picnic area

The Ravine



Picnic

Nature play

Skate/bike
skills

Community's
Walk

Ravine
creek
bridge

Ecology
center

Repurposed
shed

Bluff
overlook
trails

Pond



The Farm



The Farm: Community Resource + Gathering



① food garden

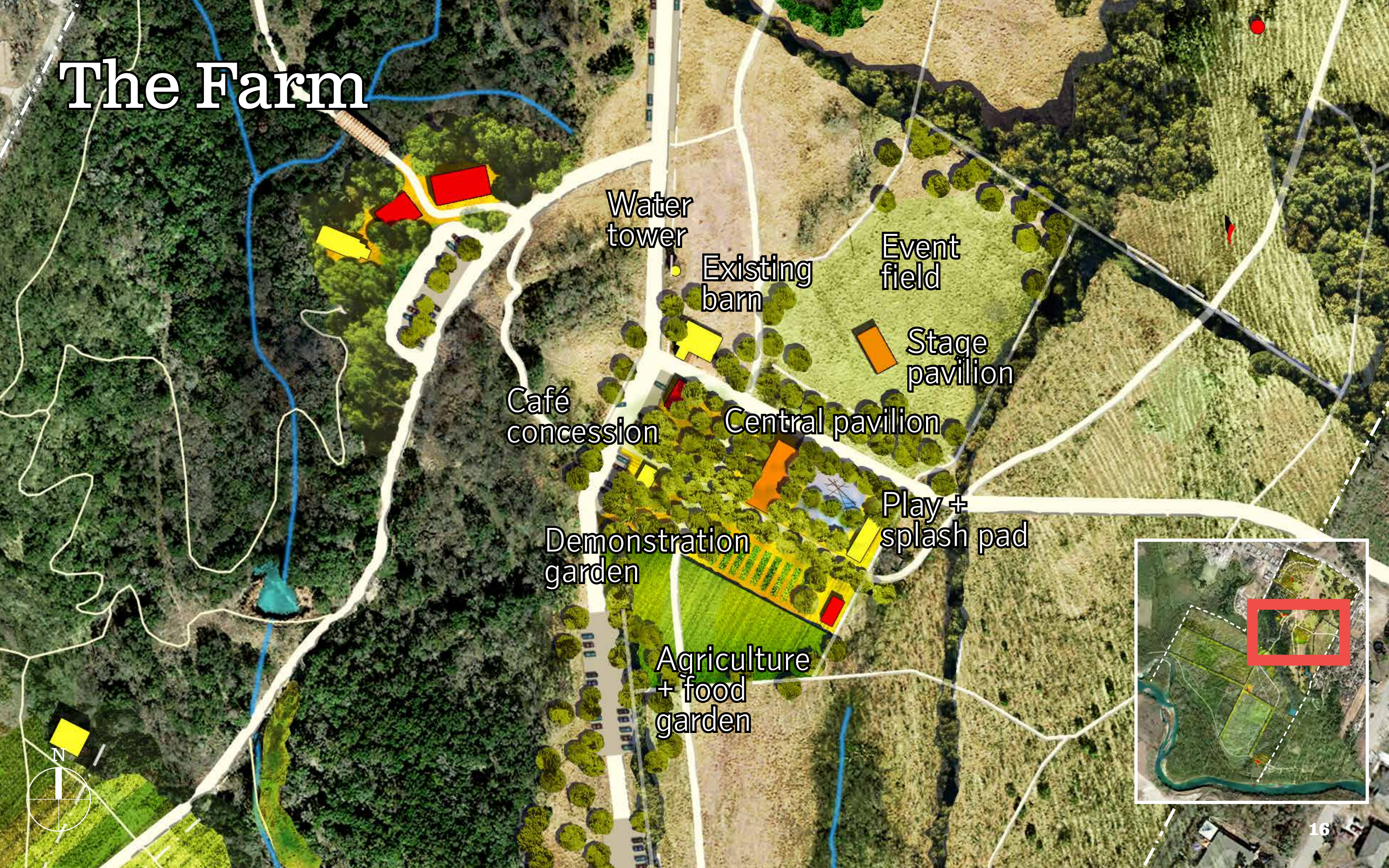
② demonstration garden

③ mobile pop-up event spaces

④ central pavilion gathering space

⑤ playground and splash pad

The Farm



Water
tower

Existing
barn

Event
field

Stage
pavilion

Café
concession

Central pavilion

Play +
splash pad

Demonstration
garden

Agriculture
+ food
garden



Home



Home

Drop-off

Bluff House

Bluff
overlook
trail

Paths +
picnic

Picnic
shelter

Pond



A Community's Walk

As a living legacy of John Treviño Jr., an accessible one-mile loop unites many of the park's primary spaces and varied ecologies. It is an opportunity for art, discovery, and community to grow with time.



John Treviño Jr. (Image credit: Voces Oral History Project, University of Texas at Austin School of Journalism)



Community walk along the proposed trail during



Floodplain Level

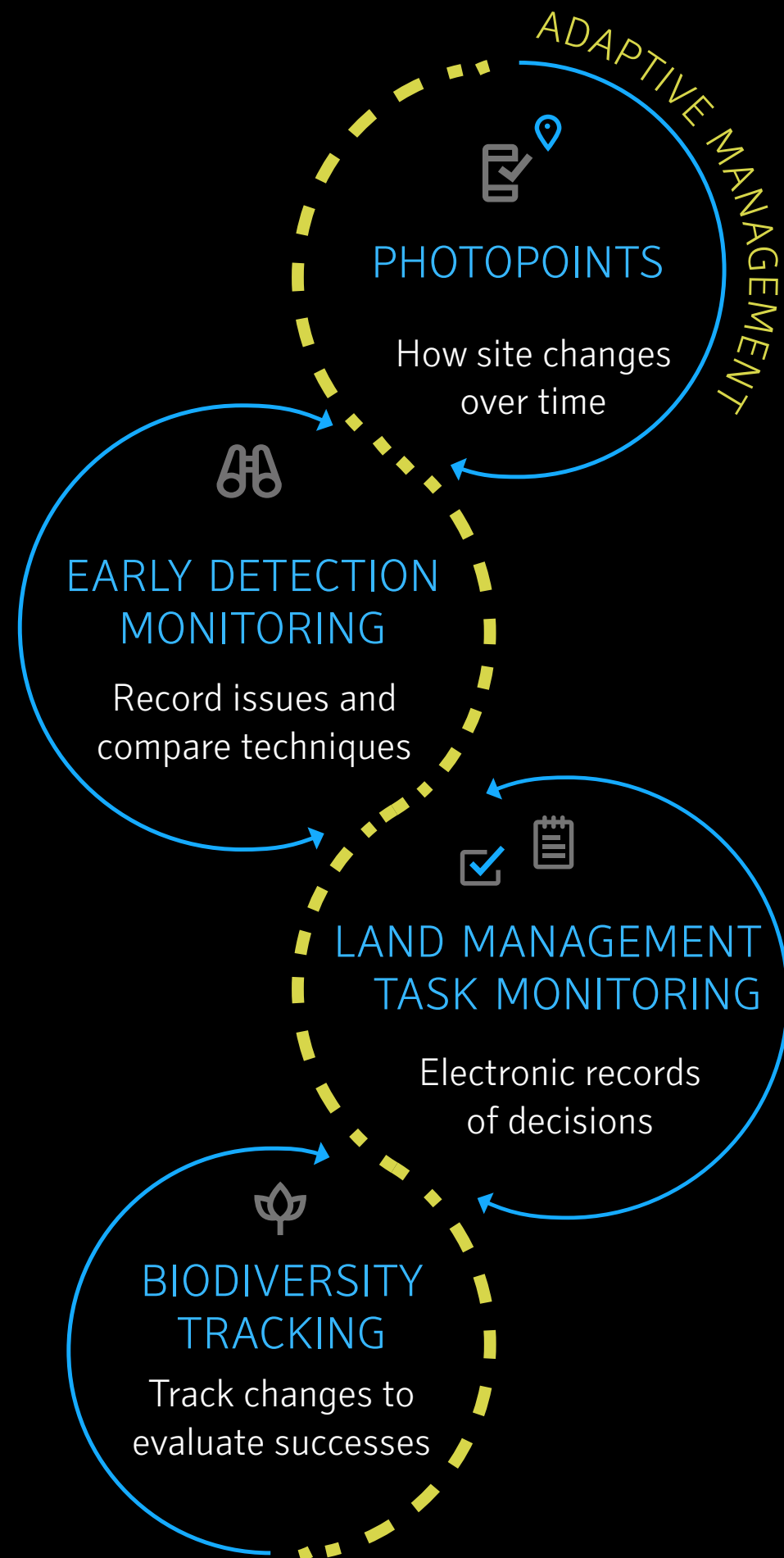


Image credit: snapshot from ATXN aerial footage of Treviño Park

Floodplain Forest and River



Ecology: Adaptive Management

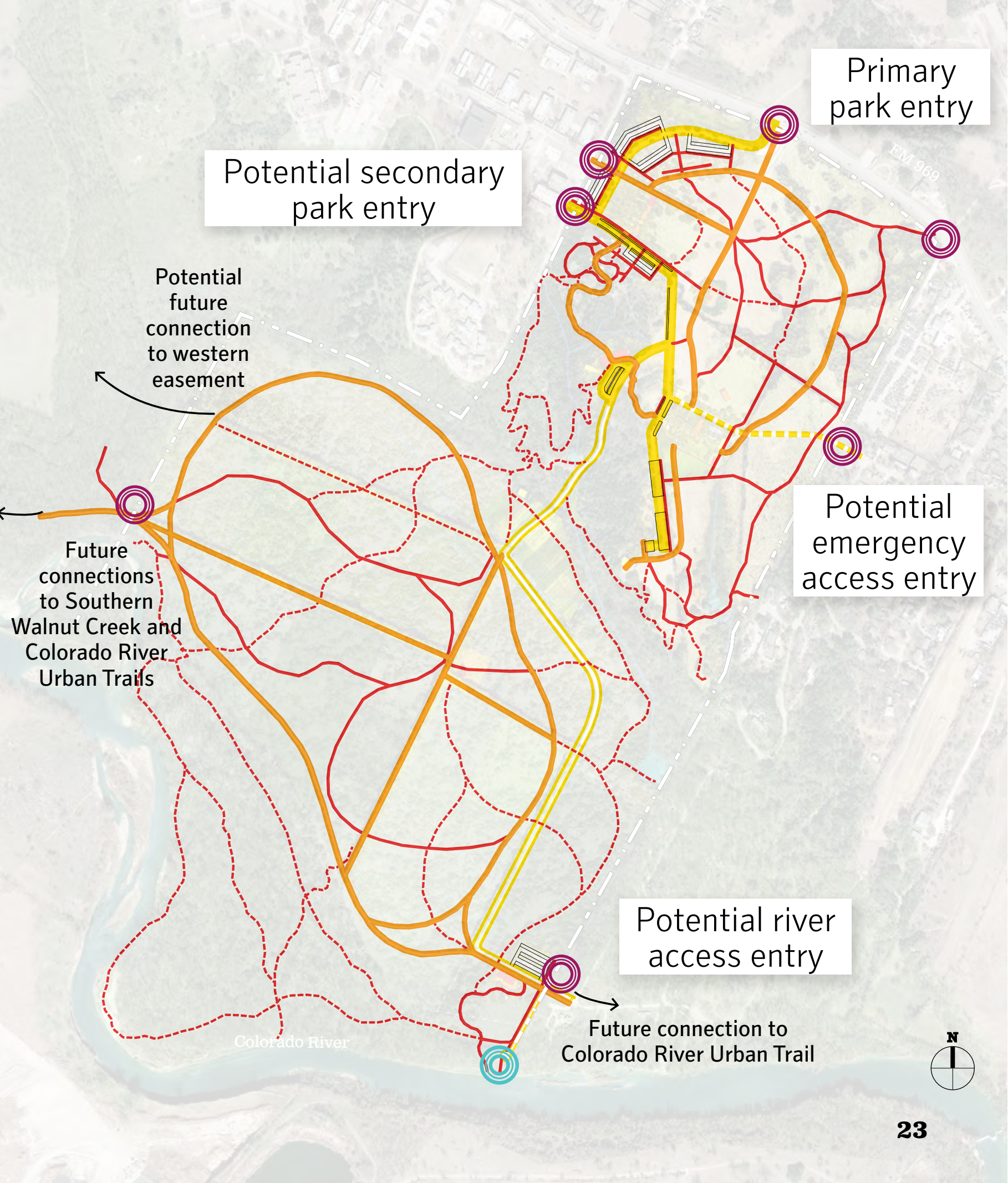


Access: Trails and Connectivity

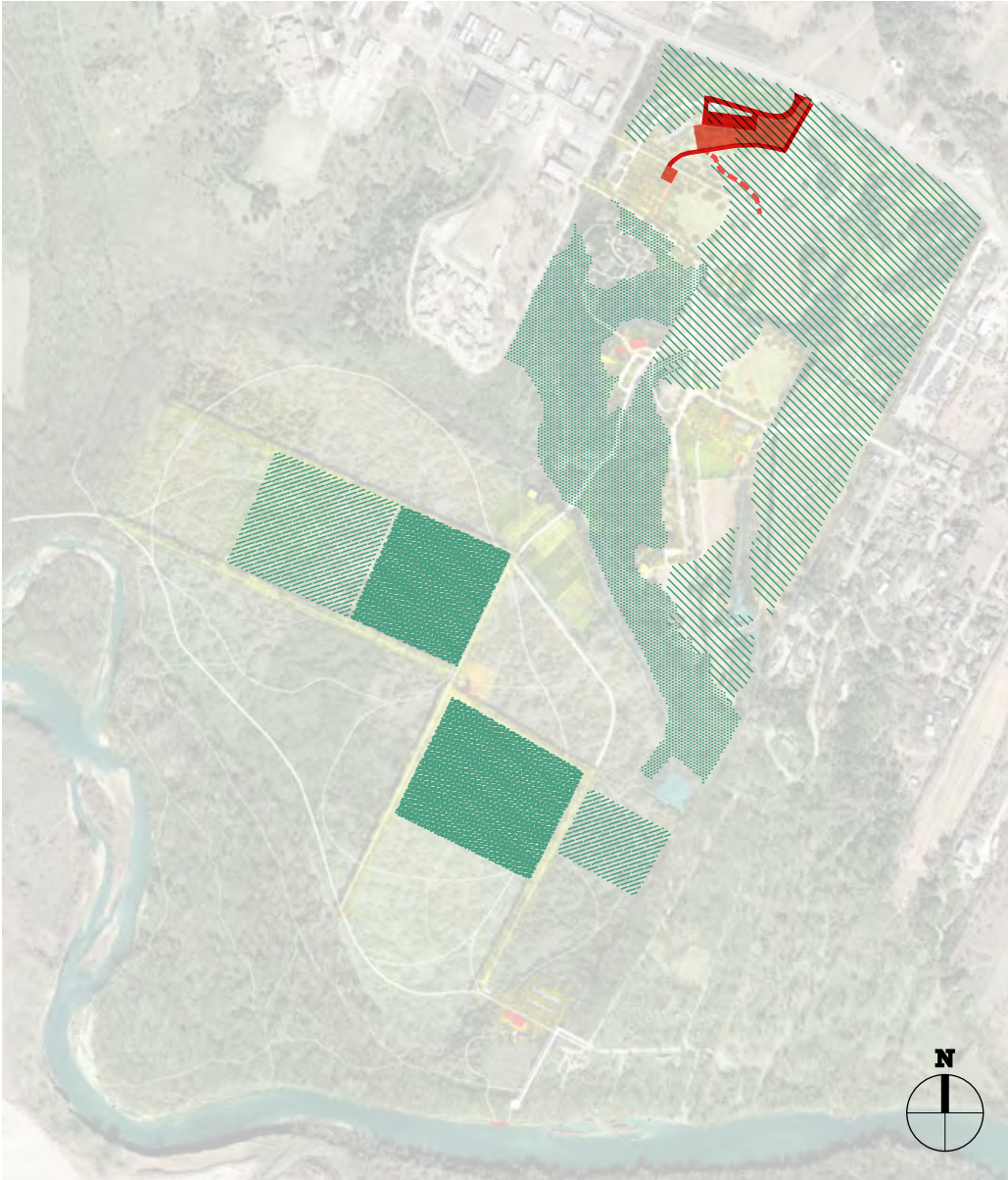


Proposed Access

- Primary trails
- Secondary trails
- Bike or pedestrian trails
- Primary roads
- Secondary roads
- Emergency access
- Park Entries
- Boat access
- Site boundary



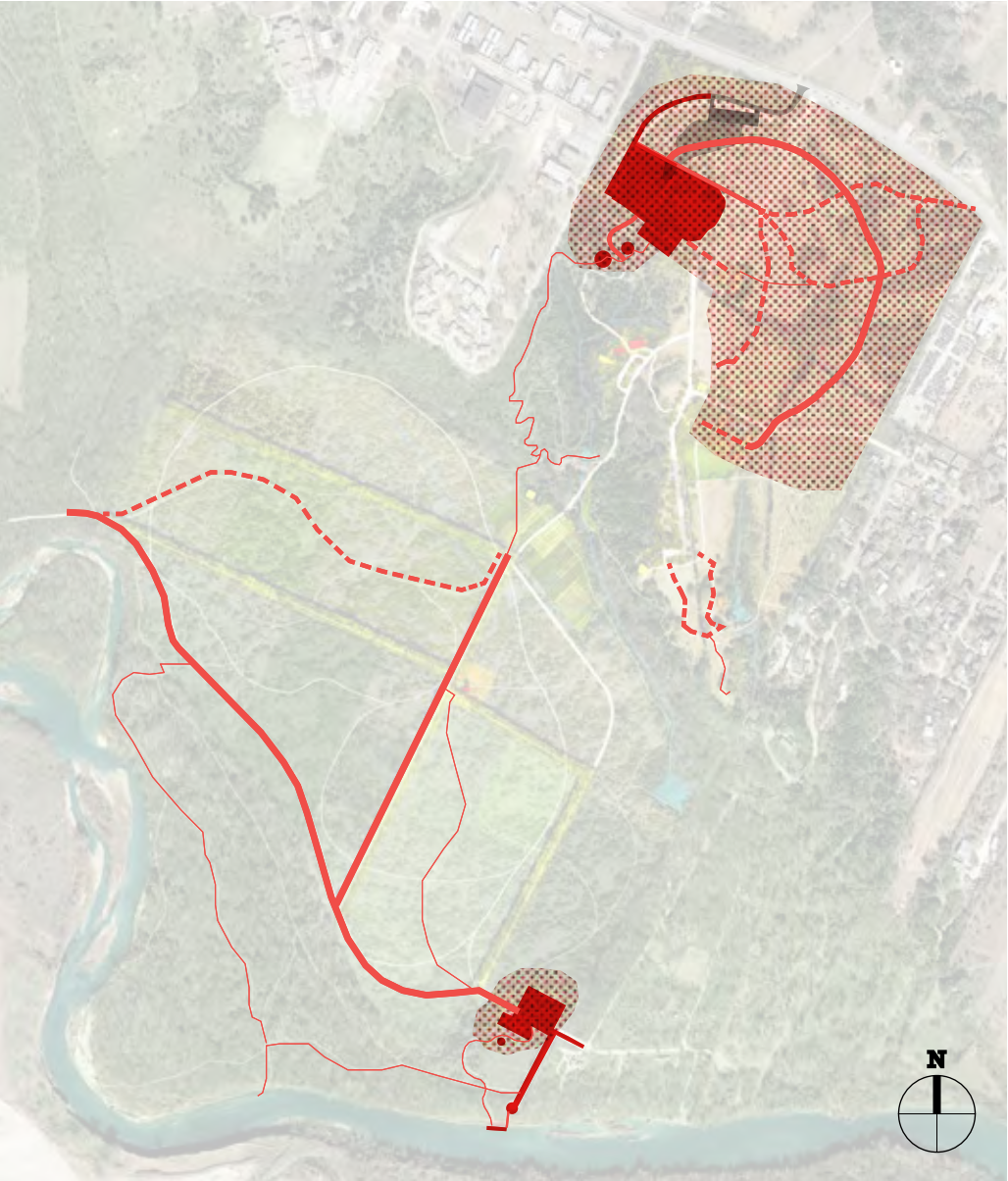
Recommended Phasing



Phase 1

Trailhead, tailgate, and opening the nature park: \$4.6 - \$5.5M

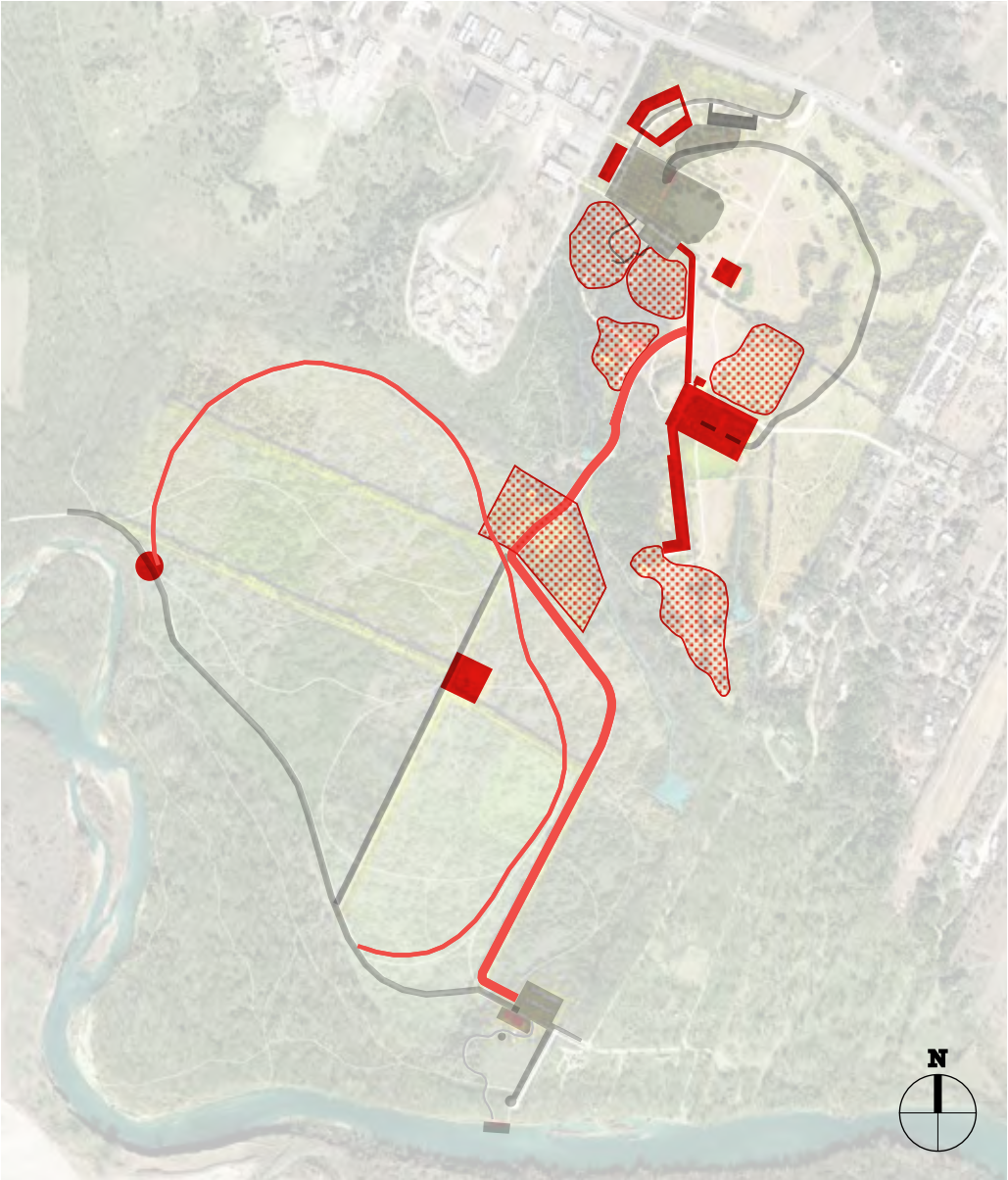
Restroom facility add-on alternate: \$1.5 - \$1.8M



Future Phases

Upland Neighborhood Park: \$15.2 - \$17.8M

River Access: \$11.1 - \$12.9M



Partner Projects

Grow Park Zones and Build on Partnerships



Master Plan for John Treviño Jr. Metropolitan Park at Morrison Ranch

Request for Recommendation to Parks and Recreation Board

For more information visit:

www.austintexas.gov/JohnTrevinoMetroPark