

Conditional Use Permit Waterloo School Austin

Private Secondary Educational Facility
1511 S. Congress Avenue
Case #: SPC-2019-0608A



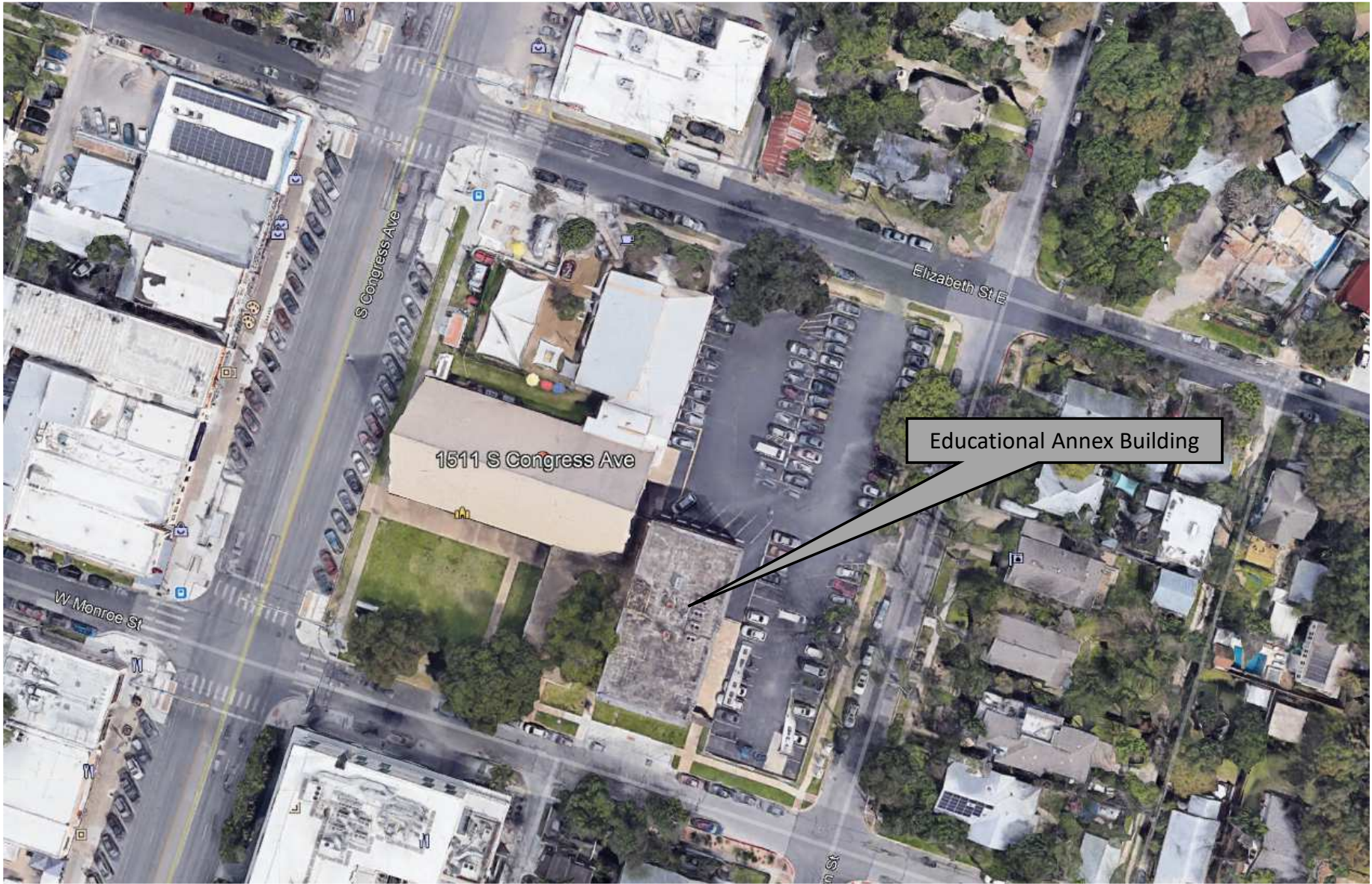
Vincent Gerard & Associates, Inc.

Land Planning, Development & Zoning Consultants

1715 South Capital Of Texas Highway, Suite 207

Austin, Texas 78746

Vincentgerard.com | (512) 328-2693





Property Profile



0.0 0 0.02 0.0 Miles

NAD_1983_StatePlane_Texas_Central_FIPS_4203_Feet

Date Printed:

This product is for informational purposes and may not have been prepared for or be suitable for legal, engineering, or surveying purposes. It does not represent an on-the-ground survey. This product has been produced by the City of Austin for the sole purpose of geographic reference. No warranty is made by the City of Austin regarding specific accuracy or completeness.

Legend

- Street Labels
- TCAD Parcels
- Zoning
- Lake Austin, Rural Residence (LA; I
 - Single Family (SF-1; SF-2; SF-3; SI
 - Mobile Home (MH)
 - Multi-family (MF-1; MF-2; MF-3; MF
 - Commercial (CH; CR; CS; CS-1; GI
 - Office (GO; LO; NO)
 - Industrial (IP; LI; MI; R&D; W/LO)
 - CBD, Downtown Mixed Use (DMU)
 - ERC; NRG; TND; TOD
 - Planned Unit Development (PUD)
 - Agriculture, Development Reserve (A
 - Aviation, Public, Unzoned (AV; P; U
 - Unclassified
- Zoning Text
- City of Austin Historic Landmark
- National Register of Historic Pl
- Local Historic Districts
- Aldridge Place Historic District
 - Castle Hill Historic District
 - Harthan Street Historic District
 - Hyde Park Historic District
 - Mary Street Historic District
 - Robertson/Stuart and Mair Historic
 - Smoot/Terrace Park Historic District
- National Register of Historic Di

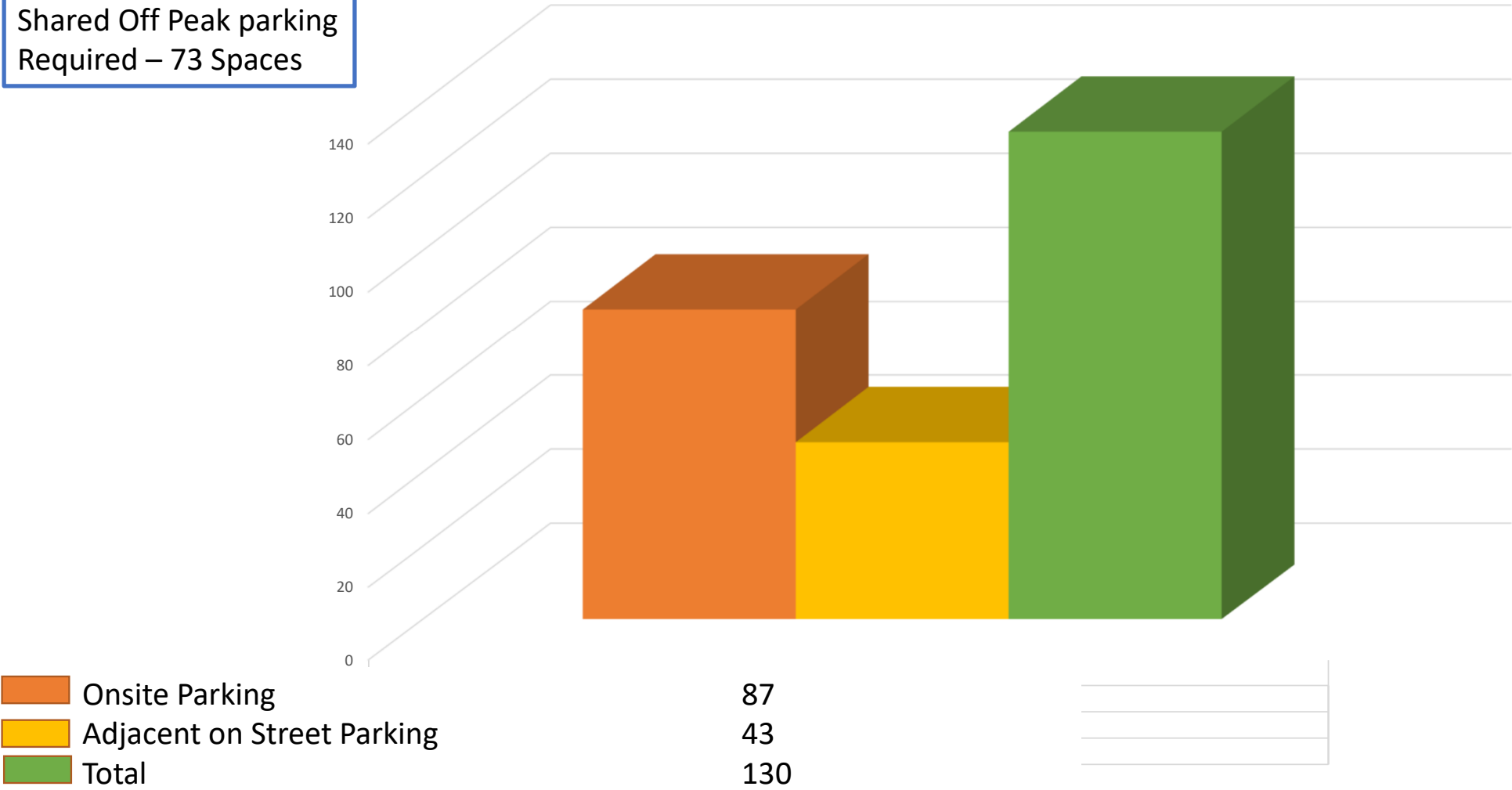
Notes

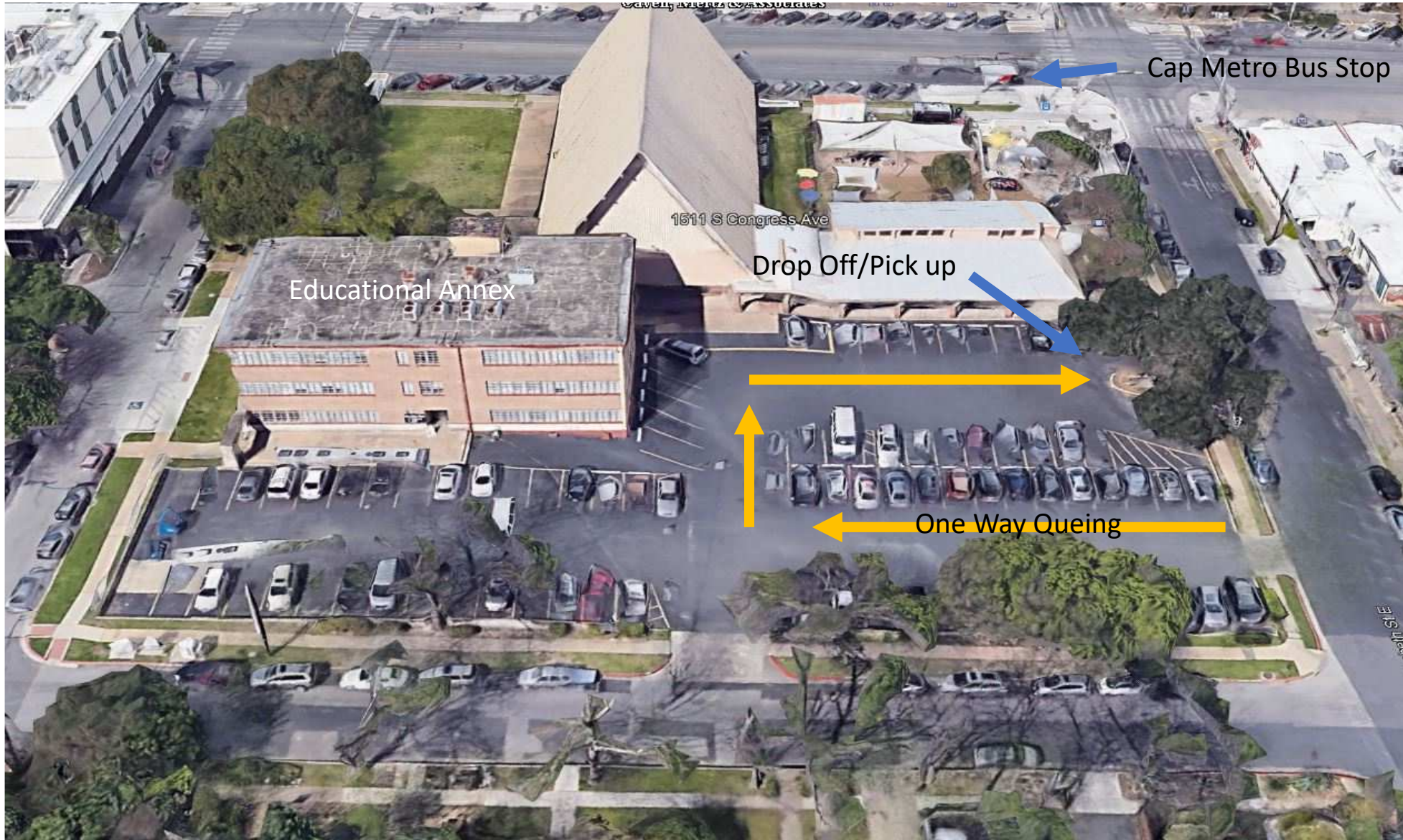
Existing Education Annex



Available Parking

Shared Off Peak parking
Required – 73 Spaces





Cap Metro Bus Stop

Educational Annex

1511 S Congress Ave

Drop Off/Pick up

One Way Queuing

No New Construction

Extremely Compatible Land Uses

- Child Care – Religious Assembly – Private Secondary
- All off Peak Uses

Traffic Study

- Plans for queuing spaces – acceptable levels
- Can adjust to staggered times – Full enrollment
- Arrival & departure times will be staffed
- Improvements to Two Curb Ramps