

An aerial photograph of a city skyline, likely Austin, Texas, featuring a river and various buildings. The image is overlaid with a semi-transparent blue filter. A white rectangular border is positioned in the upper-middle section of the frame.

COMMUNITY RESILIENCE TRUST

ATX

It started as a question:

**How do we make Austin the most
equitable city, starting with COVID-19?**

Community Resilience Trust ATX

1. Provide a community-driven, holistic, strategic and systemic response to this pandemic in the short term, and
2. Develop our resilience as a community in the long term.



Perspectives Included

Food

Universities

City Staff

Black

Infographics

Latino

Media

Advocacy

Undocumented

Marketing

Recently Incarcerated

Design

Transportation

LGBTQIA+

Government

Research

Housing

Disaster Recovery

Environment

Medical

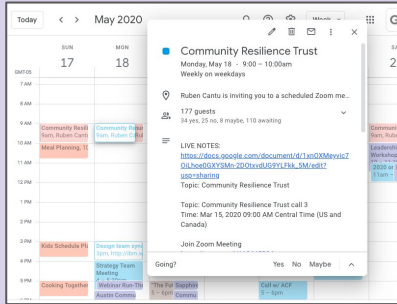
Education

Funding

Asian

Small Business

Community Resilience Trust in Action



Daily Meetings

Strategic Partnerships

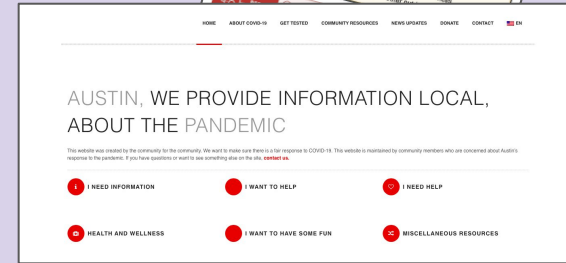
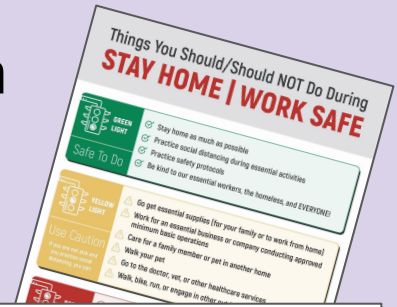
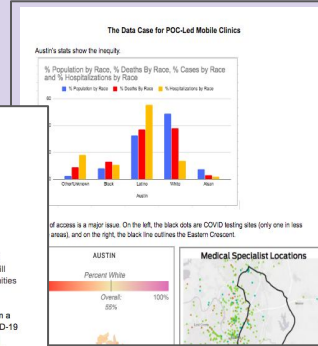
Submitted To:
Austin Public Health, Social Service Branch
Emergency Operations Center

From:
The Undersigned Community Leaders and Organizations

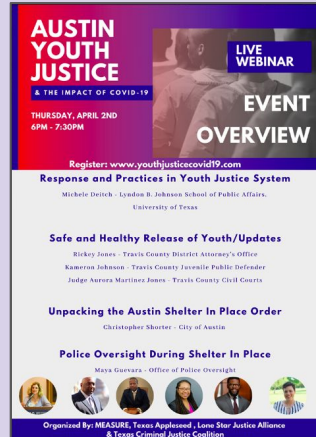
Dear Members of the Granting Committee:

I, along with the undersigned, are writing to express our support for the Austin Area Urban League (AAUL) / Central Texas Allied Health Institute (CTAHI) Rapid Response Project, an initiative that will launch much needed Mobile Clinics and other healthcare support in the most vulnerable communities of Austin to effectively address and alleviate longstanding disparities in care.

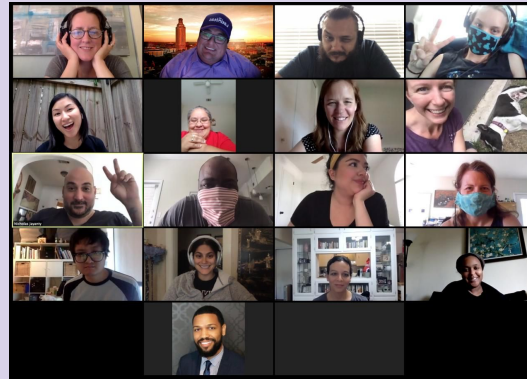
Since March 14 of this year, a diverse and representative group of over 30 community leaders from a cross-section of Austin have been meeting daily to address the gaps in Austin's response to COVID-19 with particular emphasis on equity. Collectively, we have created and implemented cross-sectional projects that tackle food insecurity, education access, culturally relevant communications, and more. This collaboration emerged out of a recognition that disasters amplify inequitable outcomes for our most vulnerable communities. Collectively and strategically this group is offsetting the impacts of the systemic operations and infrastructure that keeps those inequities in place. This group is coalescing as an effective model for a holistic, non-siloed approach necessary for developing true community resilience.



Communications



Collaborative Projects



Research & Design



Amplification of Events & Projects

What We've Produced

Research &
Briefings

Culturally Relevant Website

PPE Re-allocation

Infographics

AI/SD Response Support

Amplified Events

Funding Community Nonprofits

Facebook Group

Service Experience Survey

Community Strategies

Food Systems

Minute with the Mayor

Input to Officials

Prisons & Juveniles

Mobile Clinics

Resource Aggregation

Convergence of Worlds

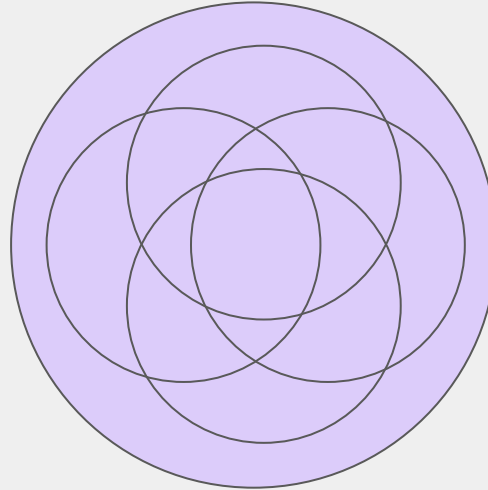
Diverse & Representative
Stakeholder Partnership

EQUITY

Standing in the Future
Listening to Listening
Responsible

HEALING

Inclusive
Accessible
Consent-based



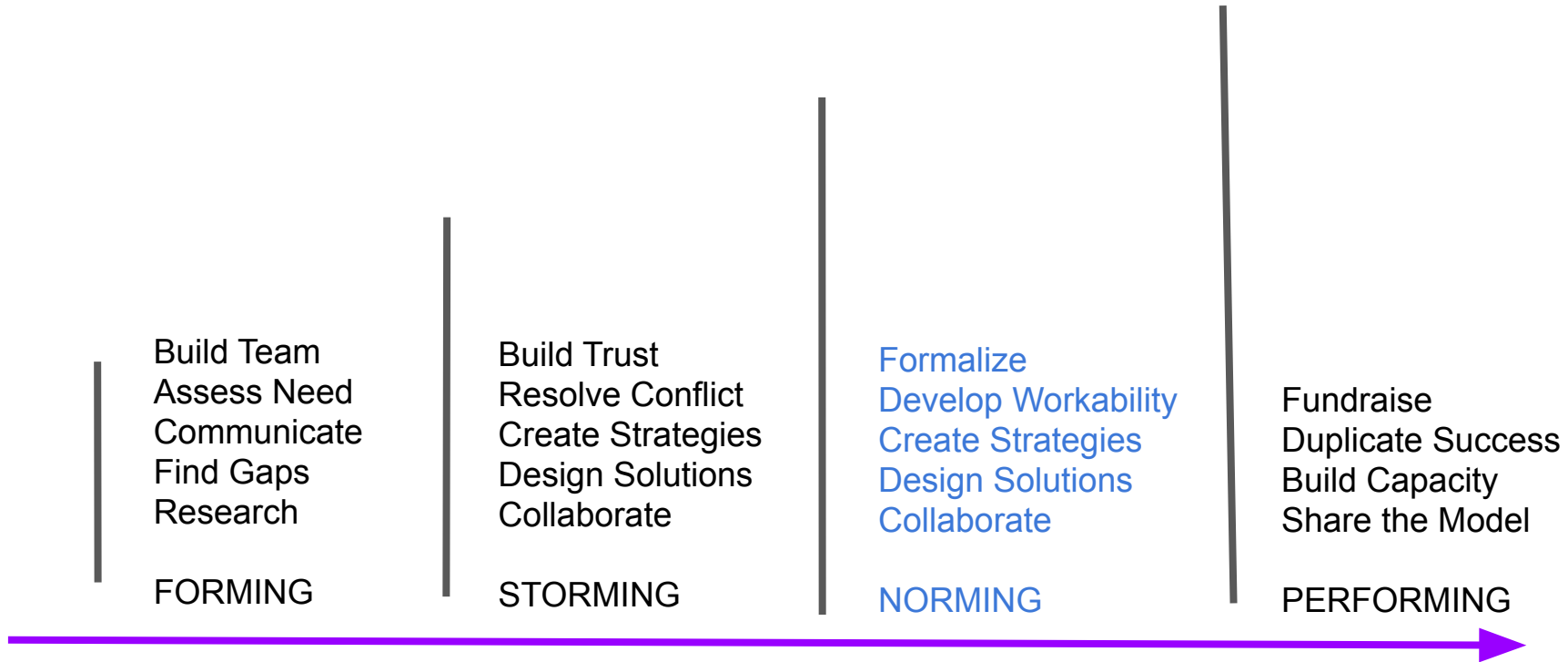
TRANSFORMATION

Human-Centered
Strategic
Actionable

SYSTEMS DESIGN

Strategic Approach

- 1. What are the key issues influencing outcomes?**
(Lived experience + Data)
- 2. What is at the source of the issue?**
(What is happening causally?)
- 3. Where does the inequity lie? Where is the integrity lacking?**
(Policies, practices, training, gatekeepers, etc.)
- 4. What are the leverage points to impact that issue at the source?**
(Who to talk to, opportunities to influence, public pressure points)
- 5. What are we as a group going to take on or who could we support that is already addressing it?**



CRT Evolution

QUARTERLY UPDATE

PROGRESS MILESTONES

Established Mid-March

- Cohort grew from 8 to 30+
- CRT Facebook Community
- CoVid Website Launched
- Successful in Move to Phase 5
- Stay Home / Work Safe Infographic
- Design Team Formation
- 8k Food Delivery Program
- Facebook Group Started
- AISD Equity Group
- Pregnant Mamas Group
- Translation Team
- Anti-Racist Lens

April Update

- Cap Metro & AISD Partner re: Wifi
- Protocols Infographics
- Minute w/ The Mayor
- Frontline Worker Design Workshop
- Testing Research
- Food Project In Full Swing
- Cohort grew to 100+
- Officials Start Attending Calls
- Small Business Grant Research
- AISD Goes Pass/Incomplete
- 5K Clicks on Website Daily
- Service Experience Survey
- Elm Ridge Supported

May Update

- Cohort Grows
- Mobile Clinics Initiatives Launch
- Strategy Team Formation
- Equitable Funding with ACF and United Way w/ Design Team
- Fundraising
- Hispanic COVID Task Force
- Letter to AISD & Parent Survey
- 10K+ Meals Delivered
- Wifi Extended
- Outside Interest Grows - Invites to Present

June Update

- Cohort Becomes “Family”
- Partnership Agreement Draft
- City Council Presentations
- Hispanic CoVid Design Program
- Census / Can Partnership
- Civics Ed Team Formation
- Police Violence Stats Collected
- Speaking at City Council re: APD
- Protests
- Texas Tech for All Petition
- Support Letter for Mobile Clinics
- Equitable COVID Outcomes Research
- CRT Presentation at Community Advancement Network
- Mobile Clinic Presentation at Community Advancement Network
- Voting Project Started
- RNA & Jereka join Strategic Learning Cohort Program
- Police System Mapping
- Police Budget Analysis
- Blog: A Call for Discomfort. A Call for Action
- Project to Offset AISD Meal Gap
- Partnership Agreement Enters Last Phase
- Wardrobe for Woman Reentering Workforce
- All APD Reform Resolutions Pass
- Systems Visualization Project Starts
- Successful Group Photo Taken
- William Buster Visits
- 700+ on Facebook

Immediate Priorities

- **APD Accountability**
- **Primary Election July 14th**
- **Hispanic Covid Response**
- **Partnership Agreement**
- **Strategic Focus**
- **Food**
- **Mobile Clinics**
- **Others?**

Identifying Big Goals

- **Equitable Outcomes for COVID-19 ?**
- **Austin Equity Roadmap ?**
- **Voter Drive to November ?**
- **CRT Adaptive Capacity ?**
- **Model for Systemic Change ?**
- **Systems Mapping ?**

Where Do Our Needs Overlap?

- 1. Interconnecting to make sure that we share tables.**
- 2. Understand where you are headed to see how we can collaborate and strategize together?**
- 3. Explore how to amplify each other's efforts.**



Contact Us

Janis@earthdayaustin.com

Rubencantu@austin.utexas.edu