



hatch+ulland owen
architects

1010 East 11th Street
Austin, Texas 78702
T: 512.474.8548
F: 512.474.8643
www.huoarchitects.com

Civil Engineer:
Civiltude LLC
5110 Lancaster Ct
Austin, TX 78723
512.761.6161

Structural Engineer:
TDI Engineering
5906 Old Fredericksburg Rd.
Ste. 300 Austin, Tx 78749
512.301.3389

Mechanical, Electrical,
and Plumbing Engineer:
Aptus Engineering LLC
1919 South 1st St.
Building B, Austin TX 78704
512.852.5059

LA VISTA DE LOPEZ

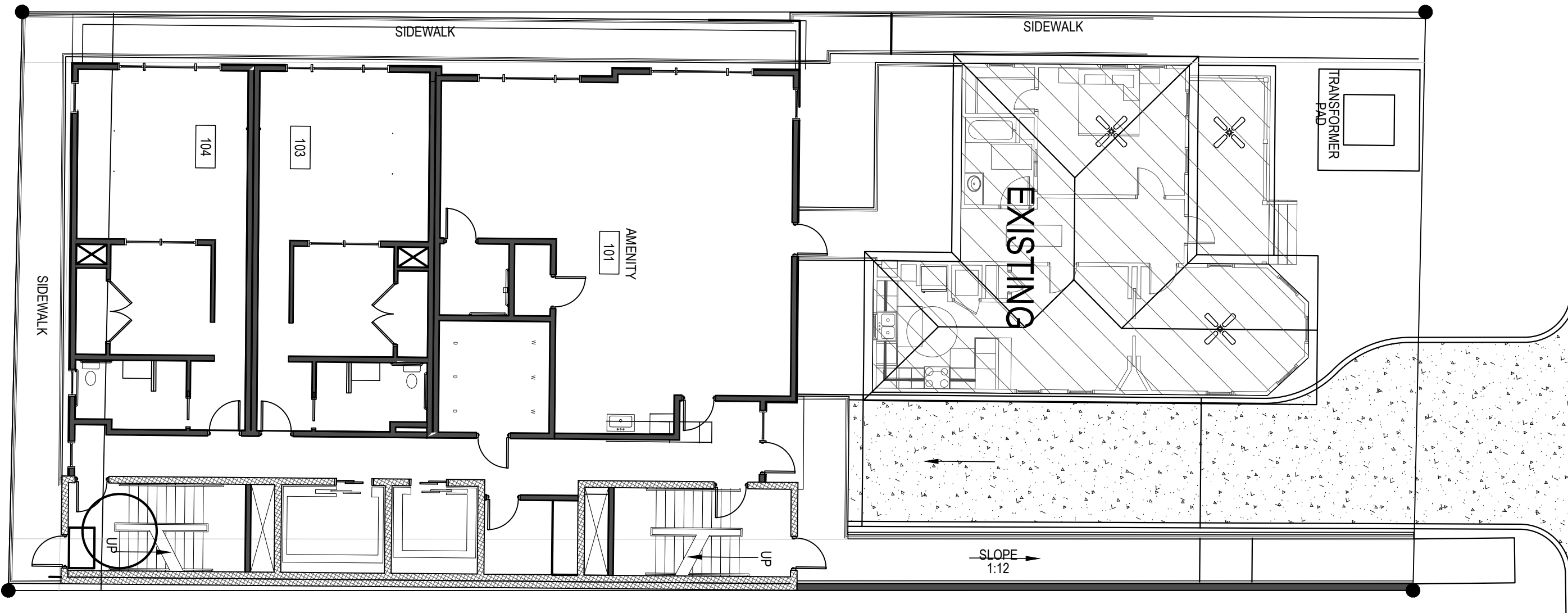
809 EAST 9TH STREET AUSTIN, TX 78702

NOT FOR REGULATORY APPROVAL
PERMITTING OR CONSTRUCTION

FOR CITY OF AUSTIN USE

SITE PLAN

SCALE: 3/32" = 1' -0"





hatch+ulland owen
architects

1010 East 11th Street
Austin, Texas 78702
T: 512.474.8548
F: 512.474.8643
www.huoaarchitects.com

Civil Engineer:
Civillitude LLC
5110 Lancaster Ct
Austin, TX 78723
512.761.6161

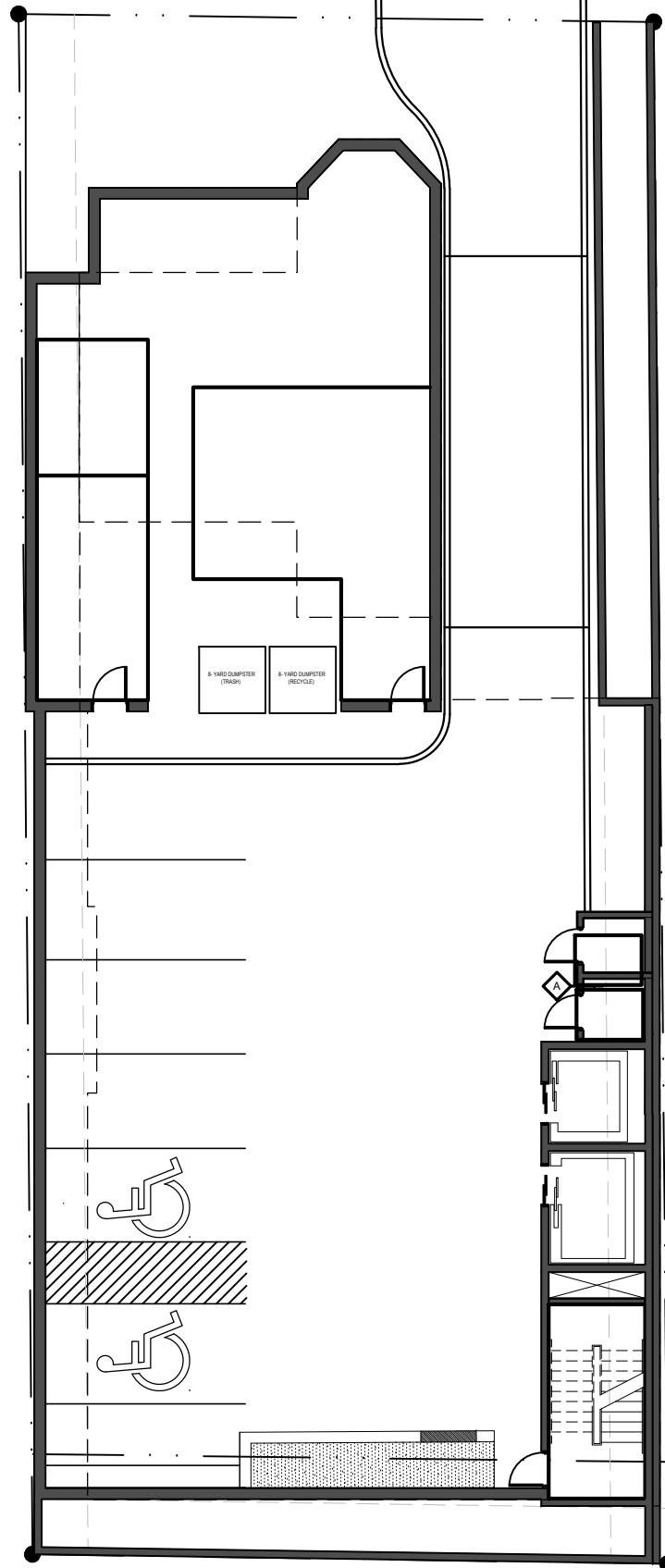
Structural Engineer:
TDI Engineering
5906 Old Fredericksburg Rd.
Ste. 300 Austin, Tx 78749
512.301.3389

Mechanical, Electrical,
and Plumbing Engineer:
Aptus Engineering LLC
1919 South 1st St.
Building B, Austin TX 78704
512.852.5059

LA VISTA DE LOPEZ

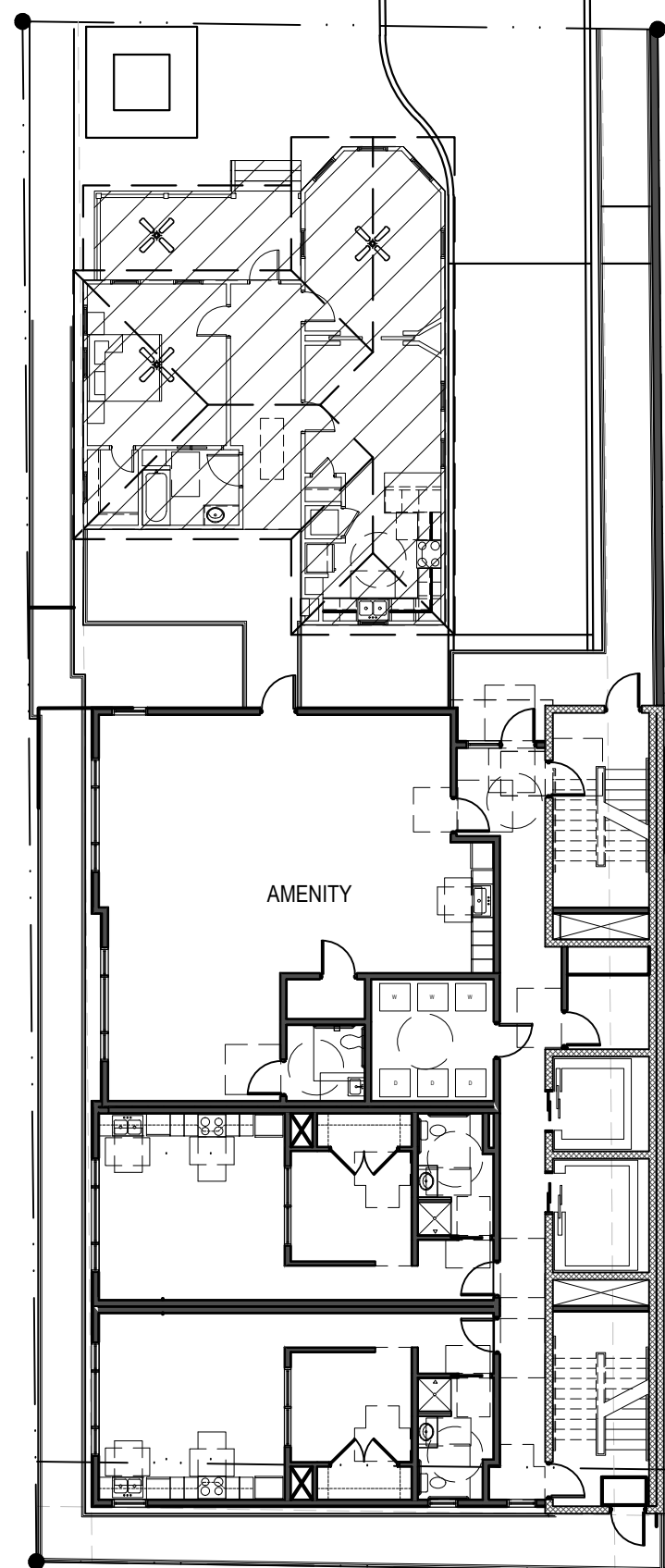
809 EAST 9TH STREET AUSTIN, TX 78702

NOT FOR REGULATORY APPROVAL,
PERMITTING OR CONSTRUCTION



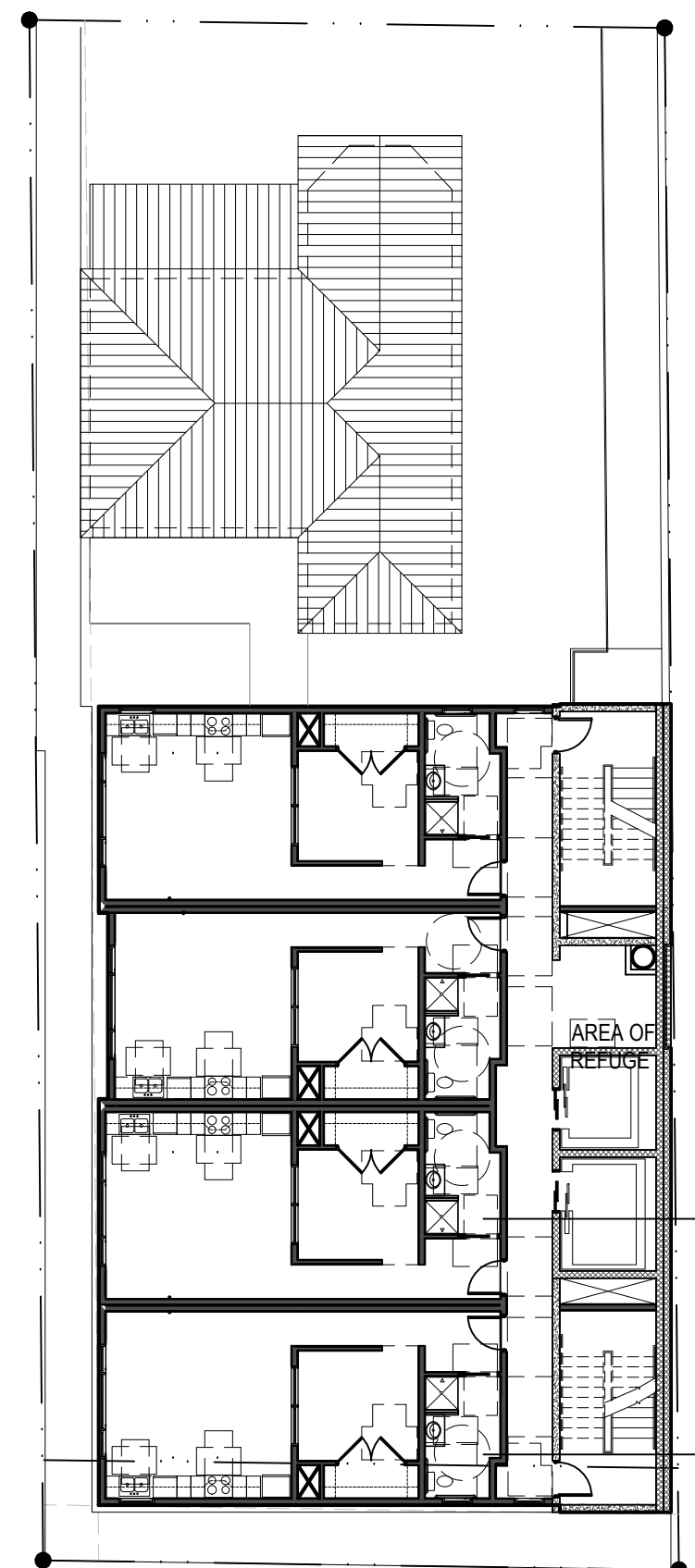
PARKING LEVEL

SCALE: 1/16" = 1'-0"



GROUND LEVEL

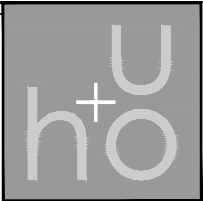
SCALE: 1/16" = 1'-0"



LEVELS 2-9

SCALE: 1/16" = 1'-0"

FOR CITY OF AUSTIN USE



hatch+ulland owen
architects

1010 East 11th Street
Austin, Texas 78702
T: 512.474.8548
F: 512.474.8643
www.huoaarchitects.com

Civil Engineer:
Civillitude LLC
5110 Lancaster Ct
Austin, TX 78723
512.761.6161

Structural Engineer:
TDI Engineering
5906 Old Fredericksburg Rd.
Ste. 300 Austin, Tx 78749
512.301.3389

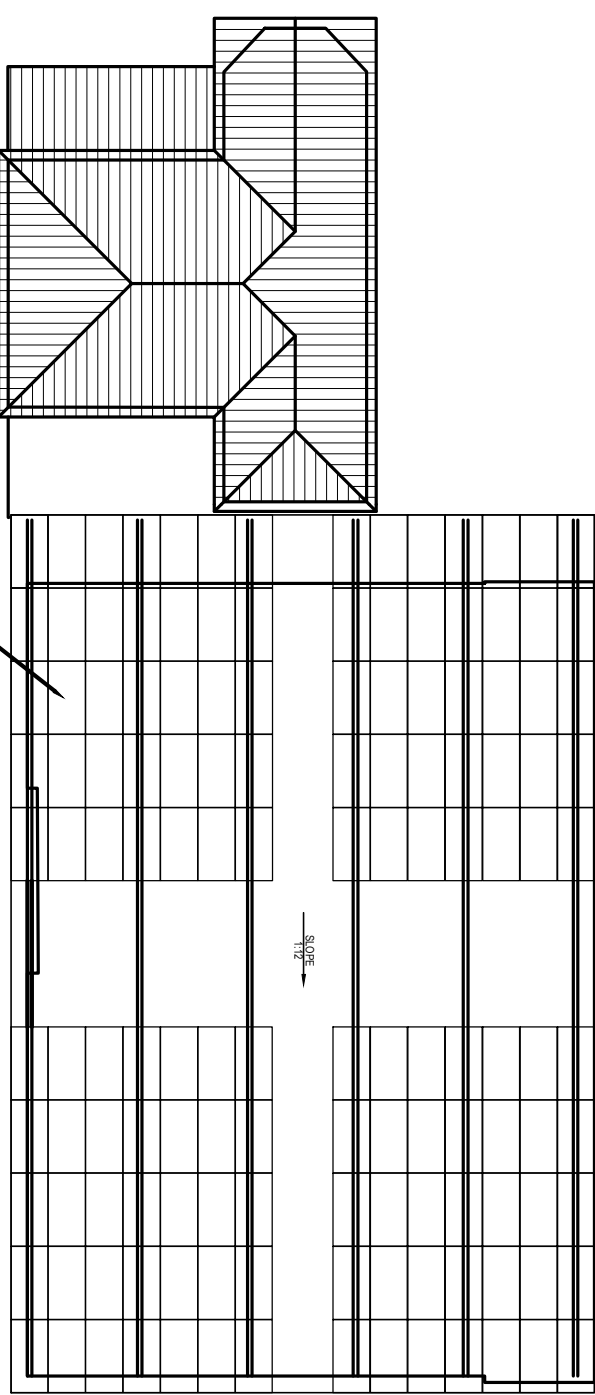
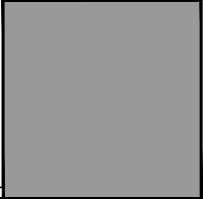
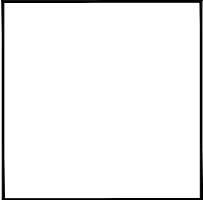
Mechanical, Electrical,
and Plumbing Engineer:
Aptus Engineering LLC
1919 South 1st St.
Building B, Austin TX 78704
512.852.5059

LA VISTA DE LOPEZ
PROJECT NAME SUB-HEADING
809 EAST 9TH STREET AUSTIN, TX 78702

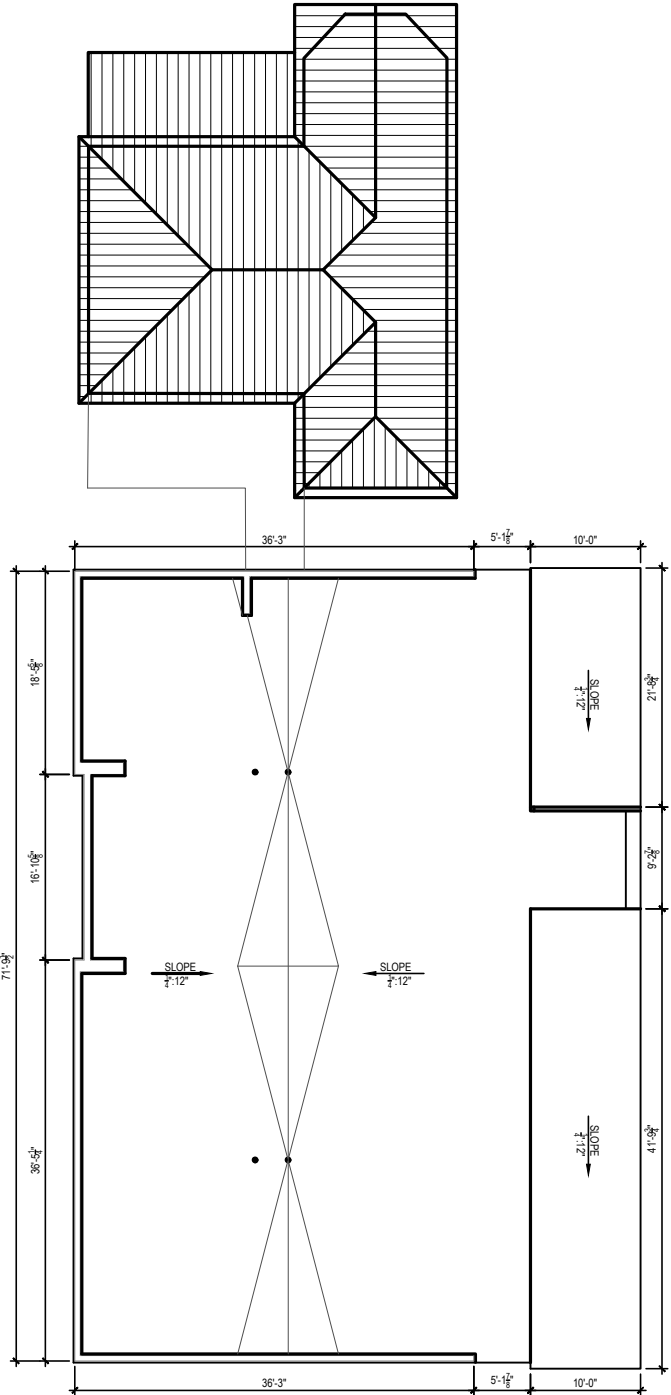
NOTE: This document, the ideas and design incorporated herein are and shall remain the property of h+u architects. These documents are not to be used or altered, in whole or in part, for other than the original intended use, nor are they to be assigned to any third party without written permission from h+u architects.

NOTE: By act of submitting a bid for the proposed contract, the bidder warrants that the bidder, and all subcontractors and material suppliers, he intends to use have carefully and thoroughly reviewed the drawings and specifications and other construction documents and have found them complete and free from any ambiguities and sufficient for the purpose intended. The bidder further warrants that to the best of their or their subcontractor's and material supplier's knowledge all materials and products specified or indicated herein are acceptable for all applicable codes and authorities.

NOT FOR REGULATORY APPROVAL
PERMITTING OR CONSTRUCTION



ROOF PLAN
SCALE: 3/32" = 1'-0"



ROOF PLAN
SCALE: 3/32" = 1'-0"

FOR CITY OF AUSTIN USE



hatch+ulland owen
architects

1010 East 11th Street
Austin, Texas 78702
T: 512.474.8548
F: 512.474.8643
www.huorchitects.com

Civil Engineer:
Civiltude LLC
5110 Lancaster Ct
Austin, TX 78723
512.761.6161

Structural Engineer:
TDI Engineering
5906 Old Fredericksburg Rd.
Ste. 300 Austin, Tx 78749
512.301.3389

Mechanical, Electrical,
and Plumbing Engineer:
Aptus Engineering LLC
1919 South 1st St.
Building B, Austin TX 78704
512.852.5059

LA VISTA DE LOPEZ

809 EAST 9TH STREET AUSTIN, TX 78702

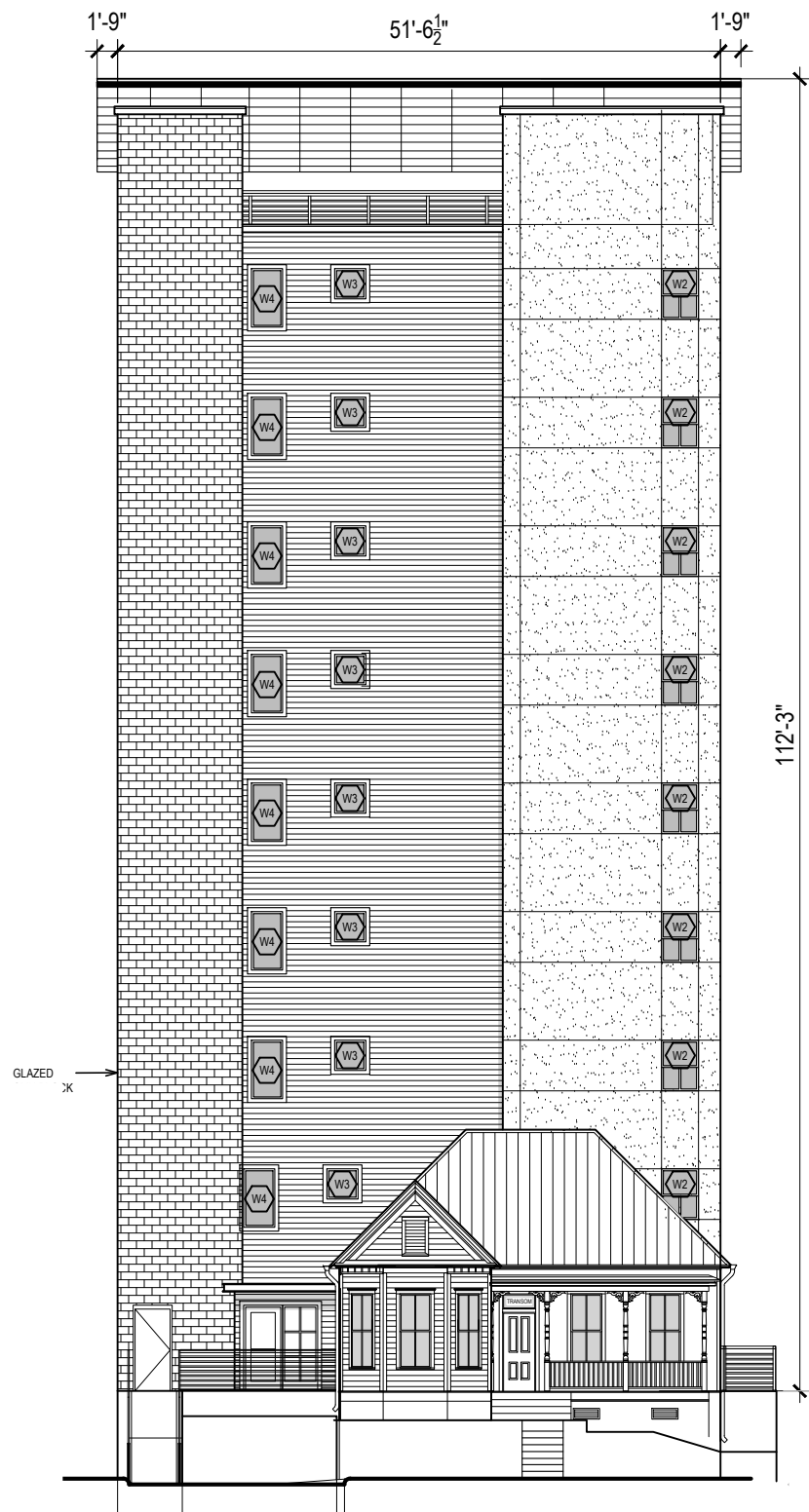
NOT FOR REGULATORY APPROVAL
PERMITTING OR CONSTRUCTION

FOR CITY OF AUSTIN USE

WEST ELEVATION

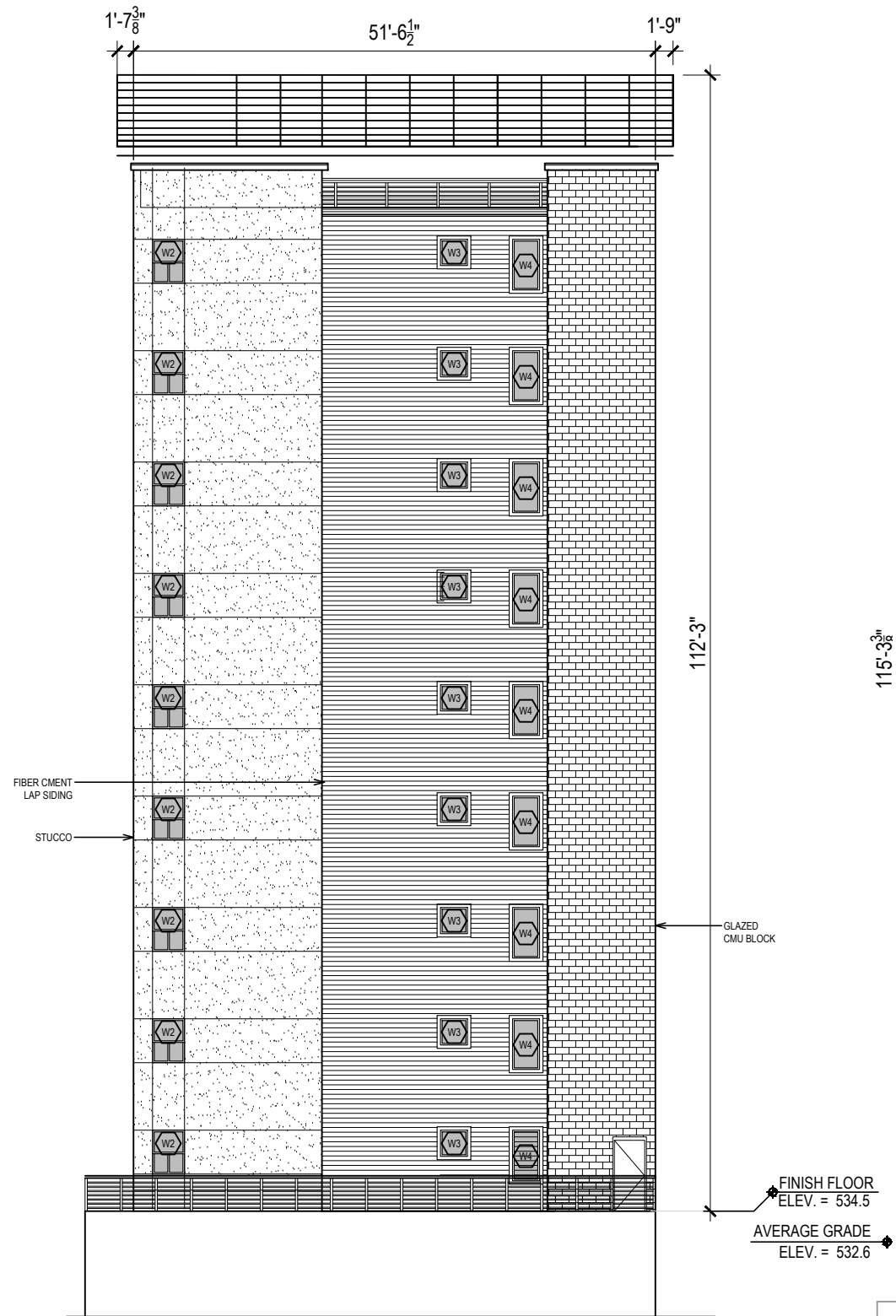
SCALE: 1/16" = 1'-0"





NORTH ELEVATION

SCALE: 1/16" = 1'-0"



SOUTH ELEVATION

SCALE: 1/16" = 1'-0"



hatch+ulland owen
architects

1010 East 11th Street
Austin, Texas 78702
T: 512.474.8548
F: 512.474.8643

www.huoarchitects.com

Civil Engineer:
Civiltude LLC
5110 Lancaster Ct
Austin, TX 78723
512.761.6161

Structural Engineer:
TDI Engineering
5906 Old Fredericksburg Rd.
Ste. 300 Austin, Tx 78749
512.301.3389

Mechanical, Electrical,
and Plumbing Engineer:
Aptus Engineering LLC
1919 South 1st St.
Building B, Austin TX 78704
512.852.5059

LA VISTA DE LOPEZ

809 EAST 9TH STREET AUSTIN, TX 78702

FOR CITY OF AUSTIN USE

NOT FOR REGULATORY APPROVAL,
PERMITTING OR CONSTRUCTION