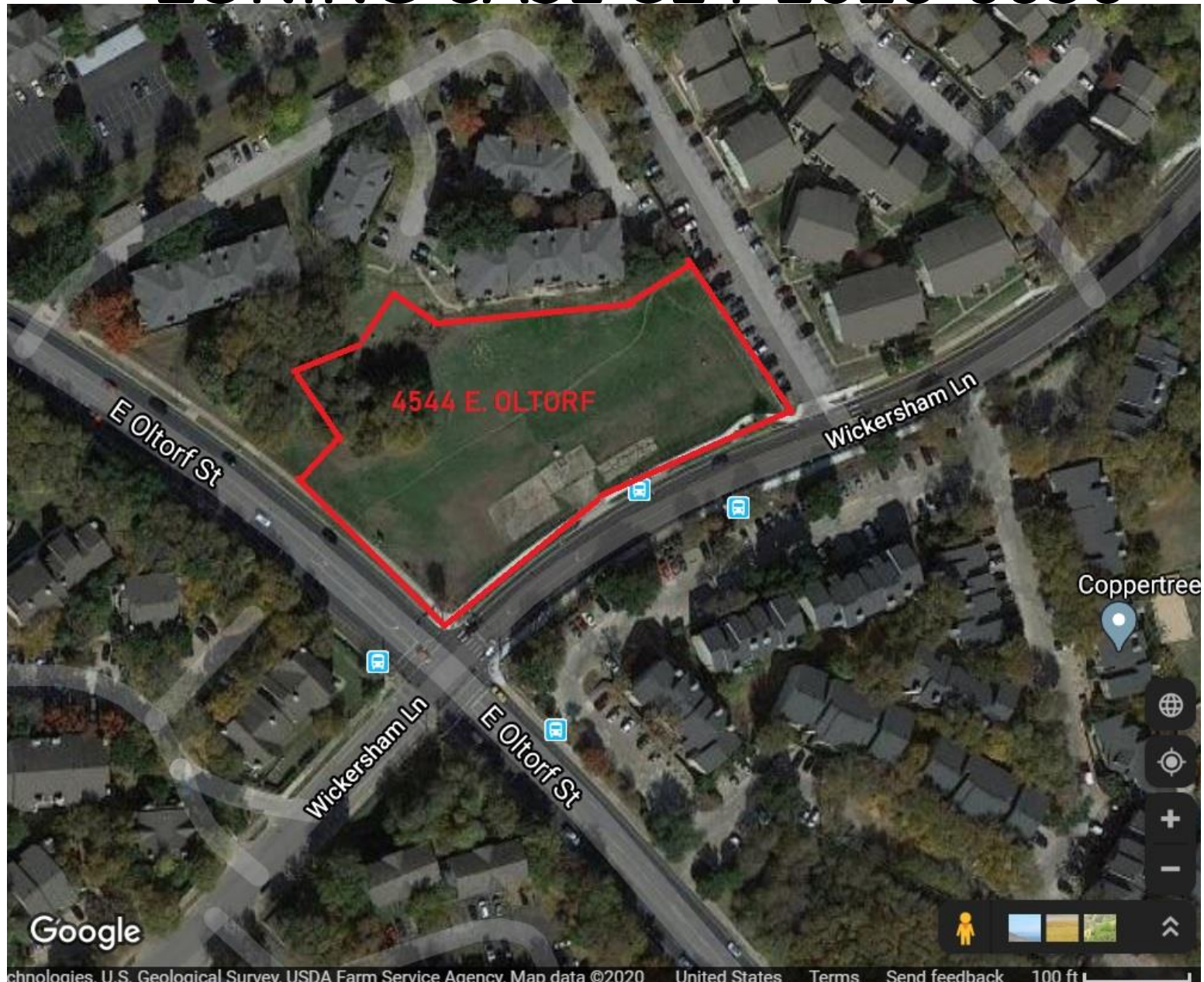


# ZONING CASE C14-2020-0056



# WICKERSHAM IS DESIGNATED AS A HEALTHY STREET

Figure 1 – Typical cross section for Wickersham Lane

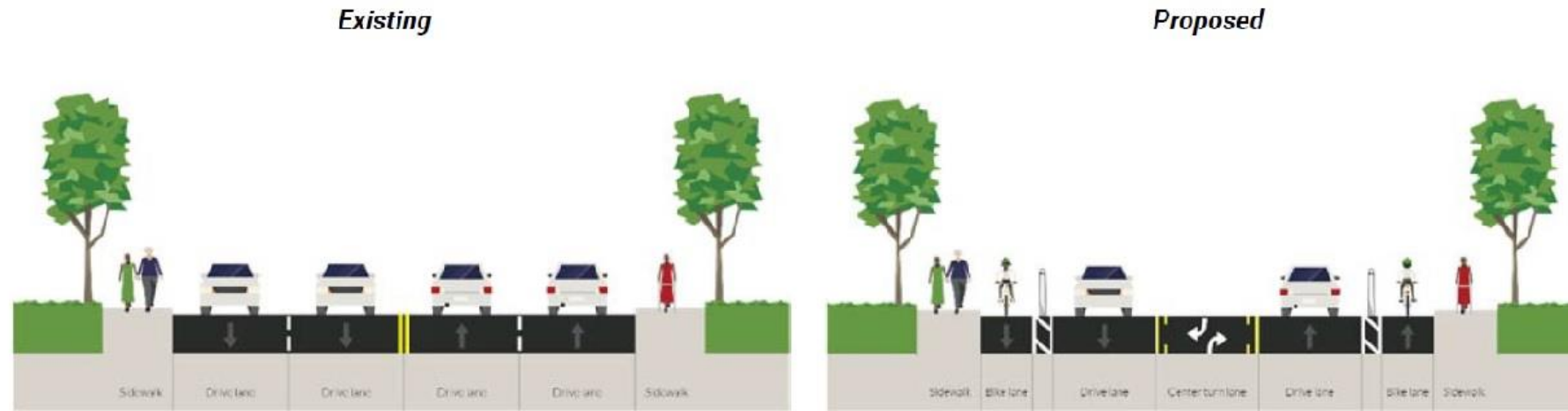
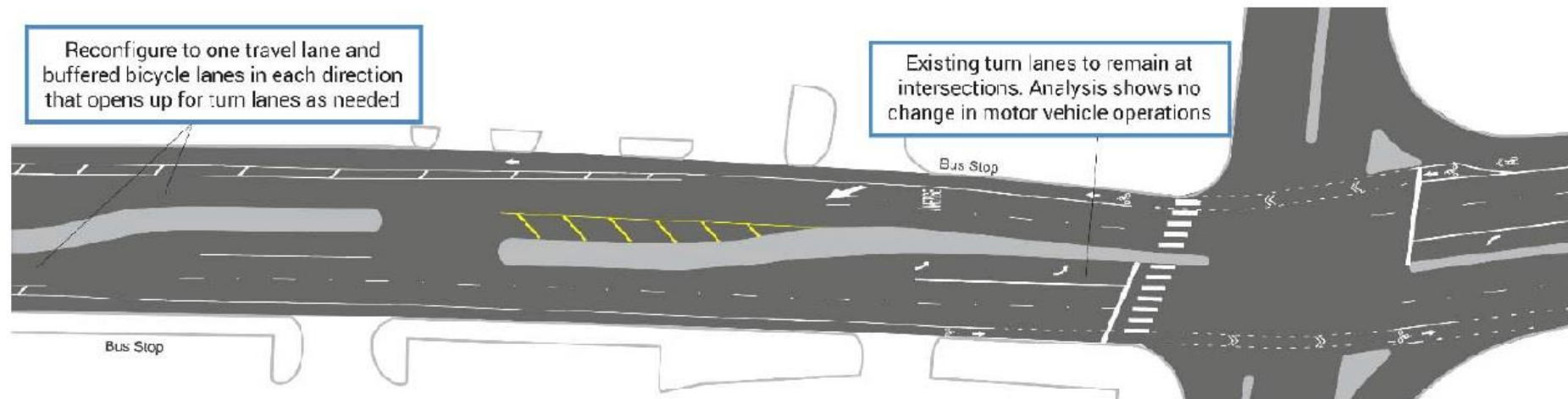


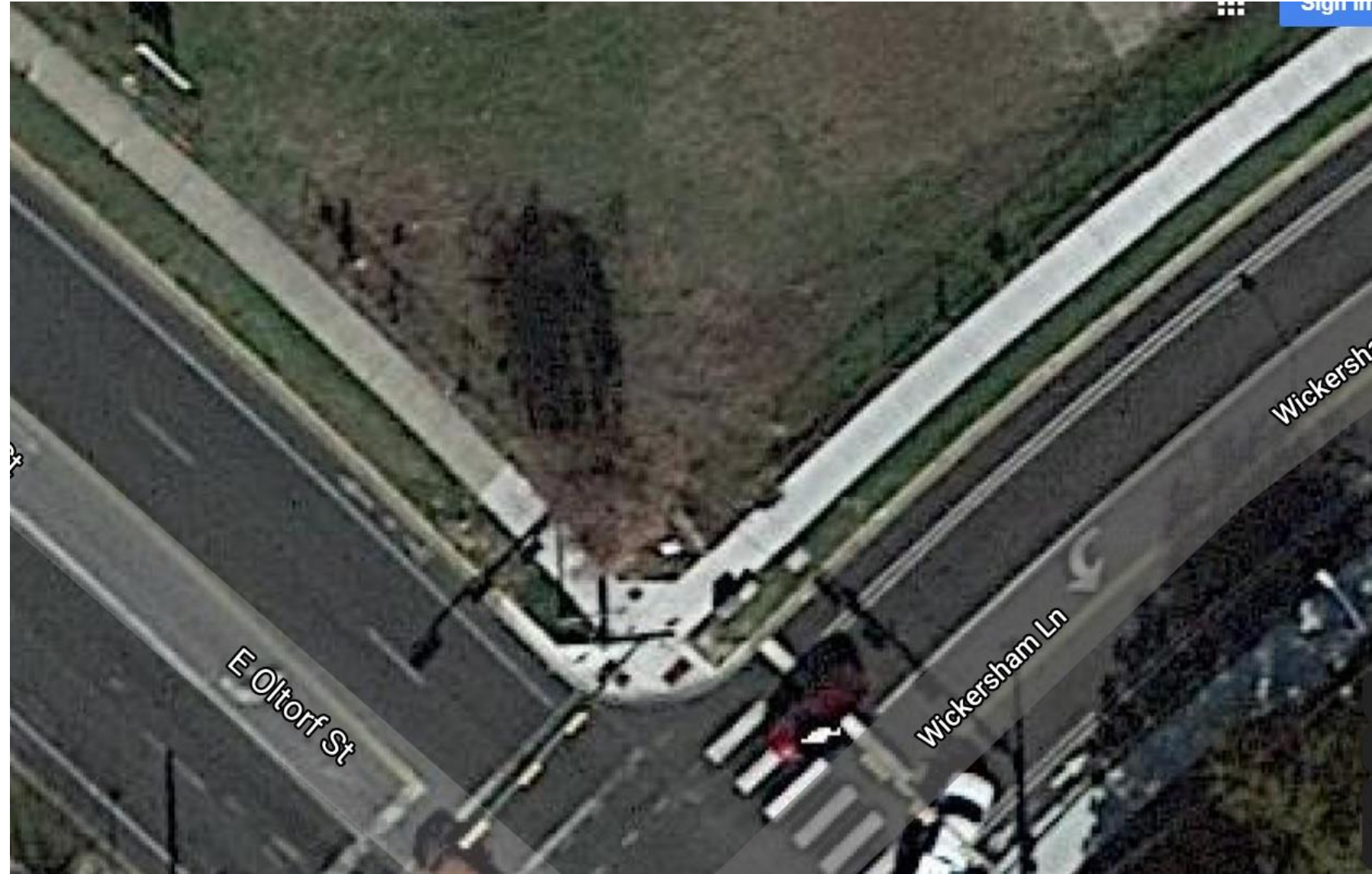
Figure 2 – An illustrative example of a typical approach to maintain lanes at an intersection for a lane conversion project





# WICKERSHAM-OLTORF INTERSECTION

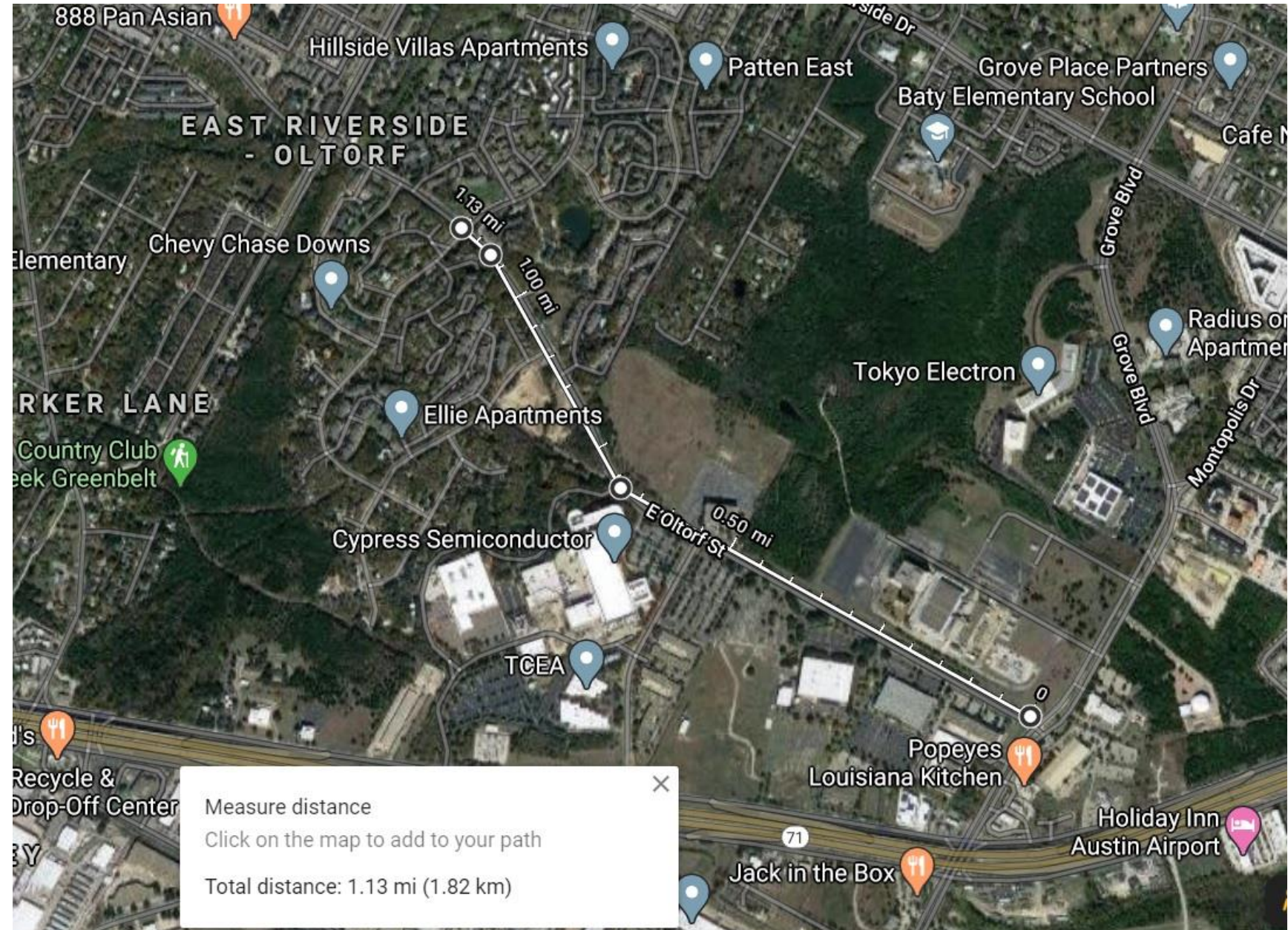
There are bike lanes on both Wickersham and Oltorf. Wickersham is designated as a Heathy Street as part of the Country Club Creek Trail. Drive through exits on these streets will create dangerous situations for bike riders.





# MONTOPOLIS TO WICKERSHAM DISTANCE ON OLTORF

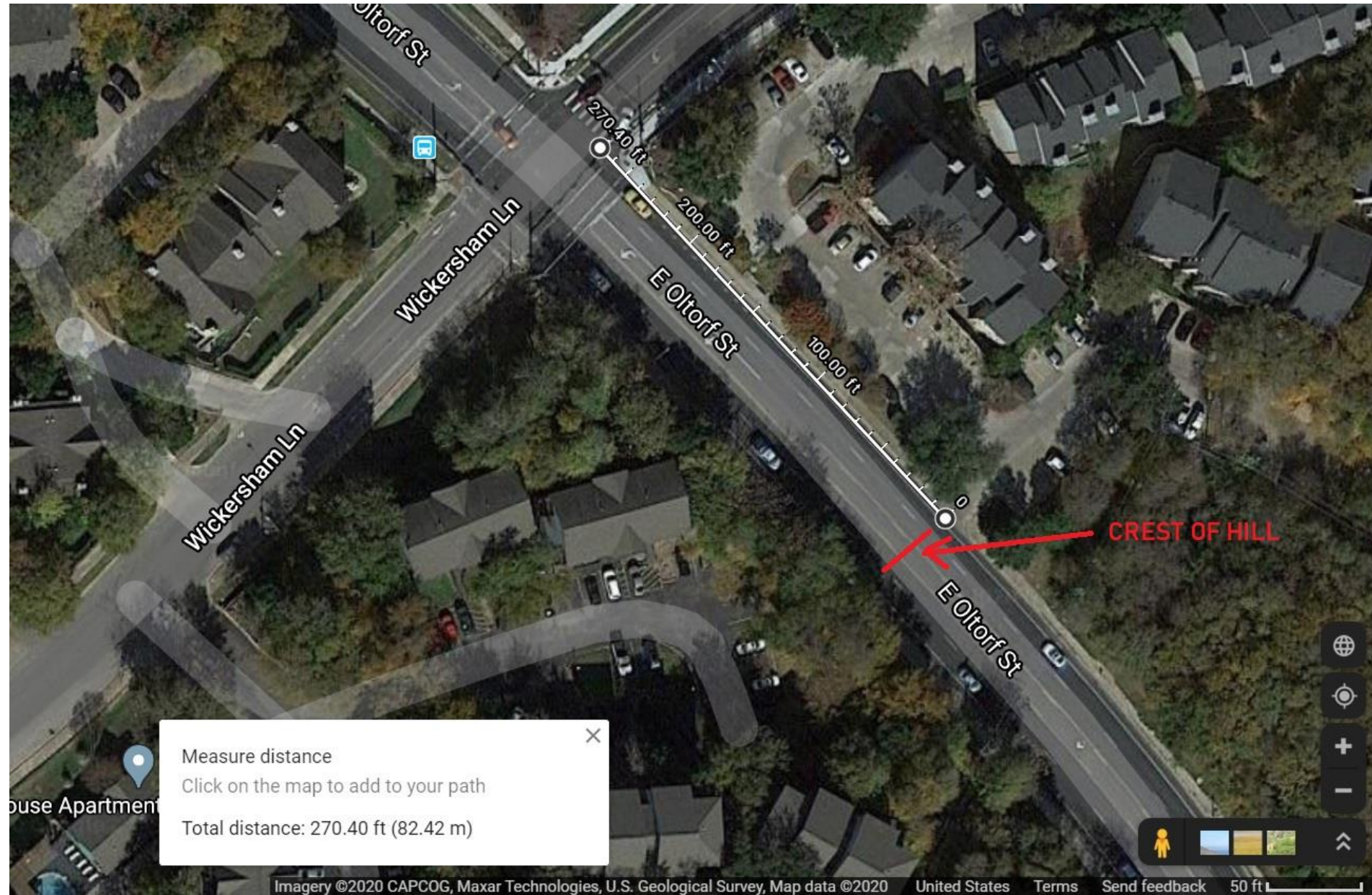
WEST-BOUND CARS ON OLTORF ENCOUNTER NO CROSS STREETS OR TRAFFIC LIGHTS FROM MONTOPOLIS TO WICKERSHAM, A DISTANCE OF OVER 1 MILE. THE SPEED LIMIT IS 45 M/HR.





# HIGH SPEED WEST-BOUND TRAFFIC ON OLTORF

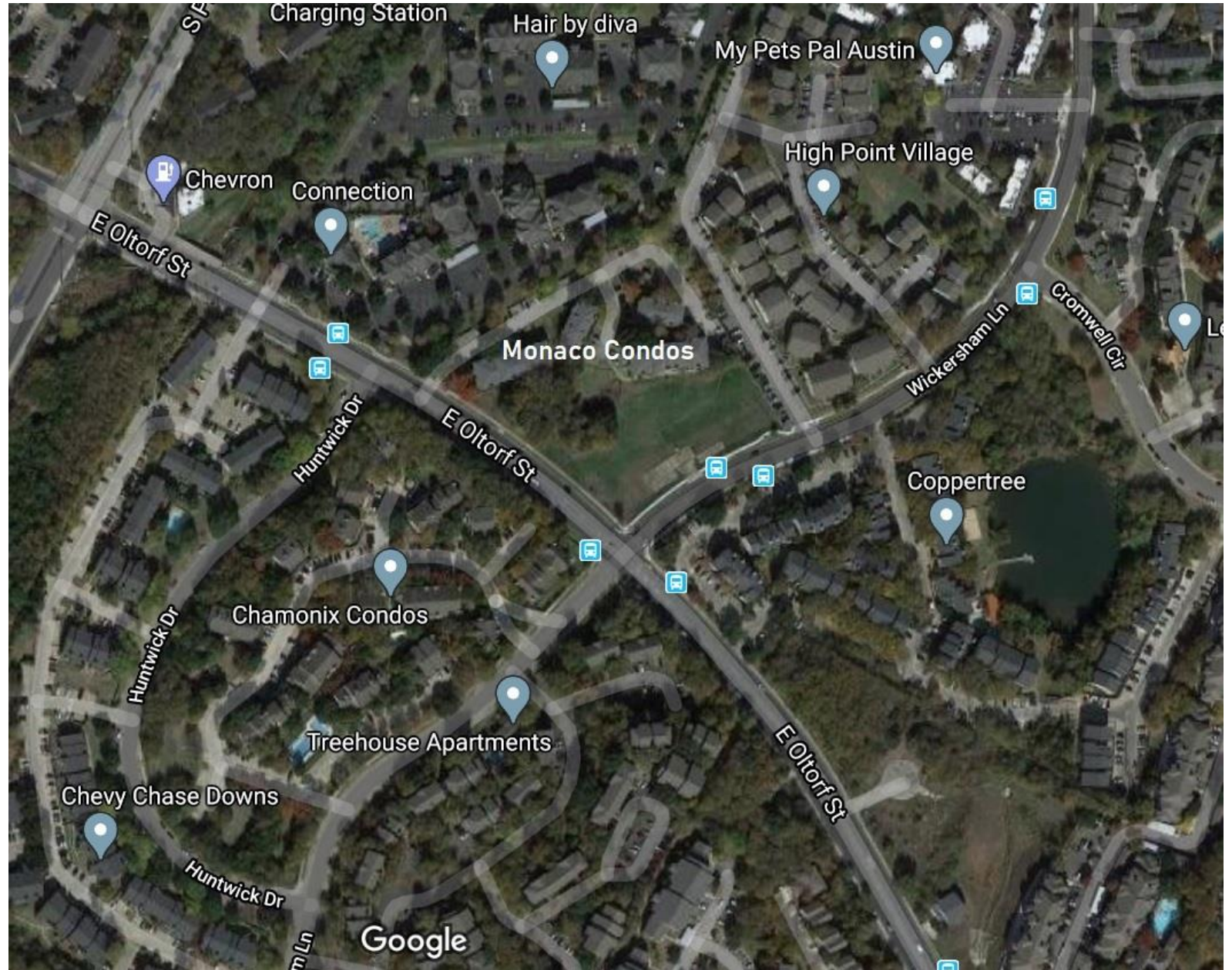
West-bound cars on Oltorf crest the hill east of Wickersham at 40 m/hr. This crest is 270 feet east of the Wickersham intersection. At this speed and distance, a west-bound driver has 4.7 seconds to react to a car entering Oltorf at the Wickersham intersection. This is the reason there are many accidents at this intersection.





# THIS IS A RESIDENTIAL NEIGHBORHOOD

The area around the Wickersham-Oltorf intersection is entirely residential, with condominiums and apartment complexes on all sides. The residents of the adjacent Monaco and Chamonix condominiums oppose drive-through services. The EROC Contact Team has voted to oppose this change. Drive-through services will disrupt the residential character of this area with increased traffic, noise, and lights.



# RECOMMENDATIONS

- Retain the prohibition on drive-through services.
- If the Planning Commission does recommend allowing drive-through services, do not allow high traffic volume services like fast food restaurants.