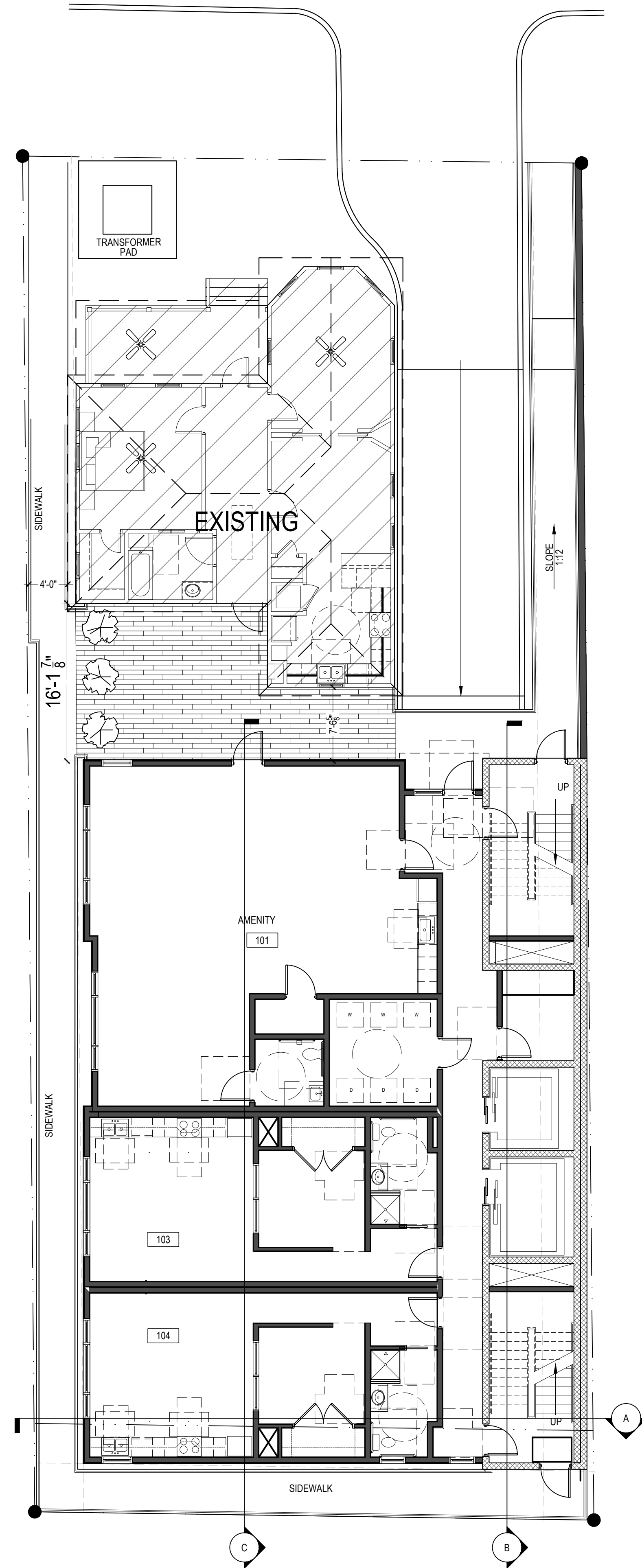


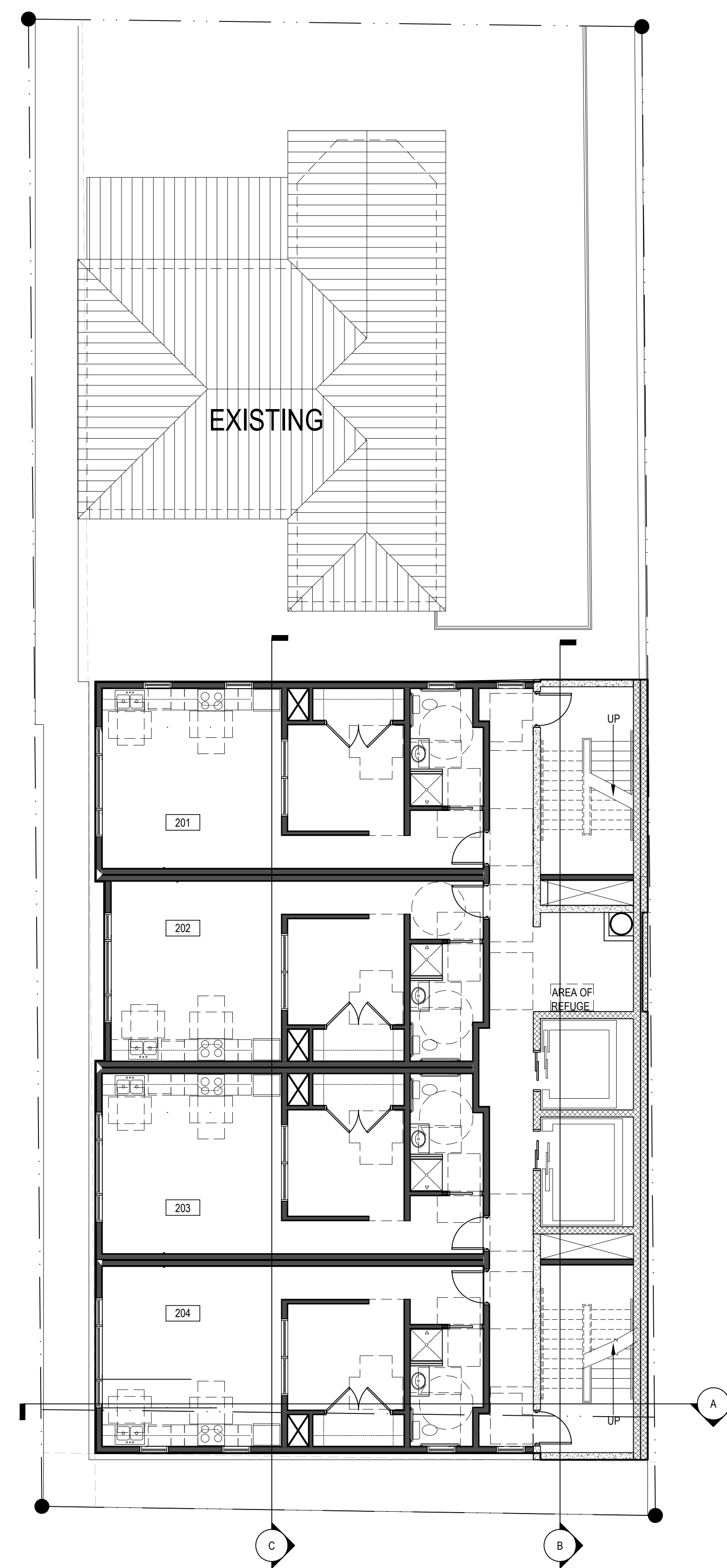
PARKING LEVEL

SCALE: 1/8" = 1'-0"



GROUND LEVEL

SCALE: 1/8" = 1'-0"



RESIDENTIAL FLOORS 2-9

SCALE: 1/8" = 1'-0"



hatch+ulland owen
architects

1010 East 11th Street
Austin, Texas 78702
T: 512.474.8548
F: 512.474.8643

www.huoarchitects.com

Civil Engineer:
Civiltude LLC
5110 Lancaster Ct
Austin, TX 78723
512.761.6161

Structural Engineer:
TDI Engineering
5906 Old Fredericksburg Rd.
Ste. 300 Austin, TX 78749
512.301.3389

Mechanical, Electrical,
and Plumbing Engineer:
Aptus Engineering LLC
1919 South 1st St.
Building B, Austin TX 78704
512.852.5059

LA VISTA DE LOPEZ

809 EAST 9TH STREET AUSTIN, TX 78702

NOTE: This document, the ideas and design incorporated herein are and shall remain the property of huo architects. These documents are not to be used or altered, in whole or in part, for other than the original intended use, nor are they to be assigned to any third party without written permission from huo architects.

NOTE: By act of submitting a bid for the proposed contract, the bidder warrants that the bidder, and all subcontractors and material suppliers he intends to use have carefully and thoroughly reviewed the drawings and specifications and other construction documents and have found them complete and free from any ambiguities and sufficient for the purpose intended. The bidder further warrants that to the best of their or their subcontractor's and material supplier's knowledge all materials and products specified or indicated herein are acceptable for all applicable codes and authorities.

NOT FOR REGULATORY APPROVAL,
PERMITTING OR CONSTRUCTION

EXTERIOR
ELEVATIONS

A-201

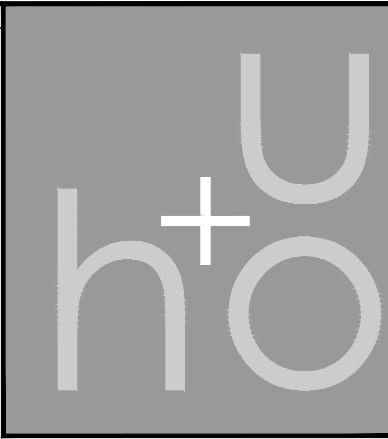


NORTH ELEVATION

SCALE: 1/8" = 1' - 0"

WEST ELEVATION

SCALE: 1/8" = 1' - 0"



hatch + ulland owen
architects

1010 East 11th Street
Austin, Texas 78702
T: 512.474.8548
F: 512.474.8643

www.huoarchitects.com

Civil Engineer:
Civiltude LLC
5110 Lancaster Ct
Austin, TX 78723
512.761.6161

Structural Engineer:
TDI Engineering
5906 Old Fredericksburg Rd.
Ste. 300 Austin, Tx 78749
512.301.3389

Mechanical, Electrical,
and Plumbing Engineer:
Aptus Engineering LLC
1919 South 1st St.
Building B, Austin TX 78704
512.852.5059

LA VISTA DE LOPEZ

809 EAST 9TH STREET AUSTIN, TX 78702

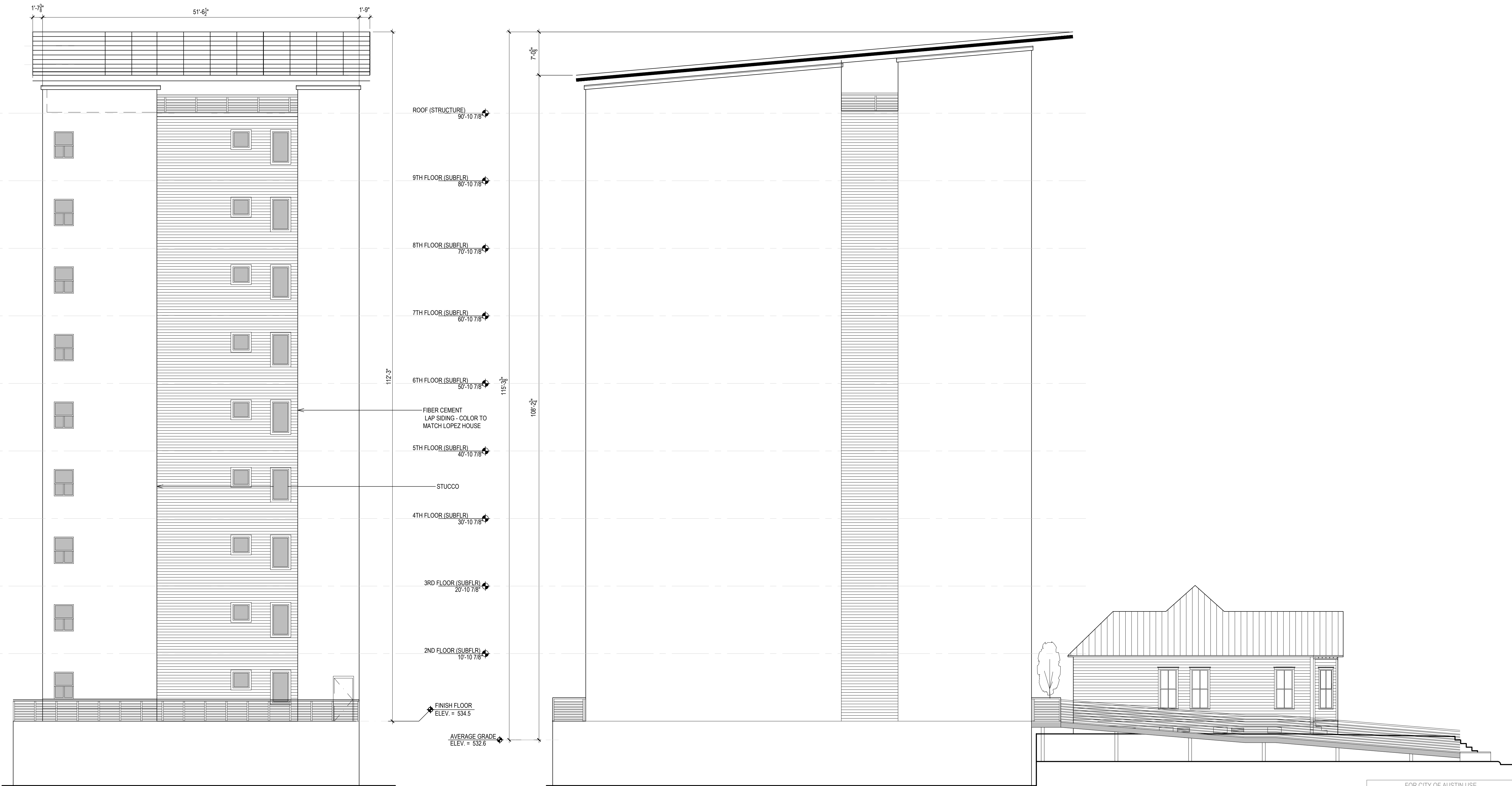
NOTE: This document, the ideas and design incorporated herein are and shall remain the property of h+o architects. These documents are not to be used or altered, in whole or in part, for other than the original intended use, nor are they to be assigned to any third party without written permission from h+o architects.

NOTE: By act of submitting a bid for the proposed contract, the bidder warrants that the bidder, and all subcontractors and material suppliers he intends to use have carefully and thoroughly reviewed the drawings and specifications and other construction documents and have found them complete and free from any ambiguities and sufficient for the purpose intended. The bidder further warrants that to the best of their or their subcontractor's and material supplier's knowledge all materials and products specified or indicated herein are acceptable for all applicable codes and authorities.

NOT FOR REGULATORY APPROVAL
PERMITTING OR CONSTRUCTION

EXTERIOR
ELEVATIONS

A-202



SOUTH ELEVATION
SCALE: 1/8" = 1' - 0"

EAST ELEVATION
SCALE: 1/8" = 1' - 0"