



BCP PARTNER EDUCATION SUMMARY

FY 2020 Third Quarter: April 1 – June 30, 2020

City of Austin, Travis County, The Nature Conservancy, Westcave Preserve, Wild Basin Preserve, and Travis Audubon's Baker Sanctuary

3rd Quarter: Outreach & Education (All Partners)

Activity	Location	Events	Youth	Adults	Volunteer Hours
Guided Hikes	Onsite	105	160	430	
Programs / Presentations	Offsite	5	4	140	13
Land Stewardship	Onsite	14	2	29	333
Ecological Monitoring	Onsite	58		15	173.5
	Offsite	11		12	362
Training	Onsite	3		13	19.5
April-June Total		196	166	639	901
Monetary value of volunteer work (\$25.10/hour): \$22,615.10					

SELF-GUIDED PUBLIC ACCESS

Many of the publically accessible areas of the preserve closed in March to help prevent the spread of COVID-19. These include Hamilton Pool Preserve and Wild Basin Wilderness Preserve.



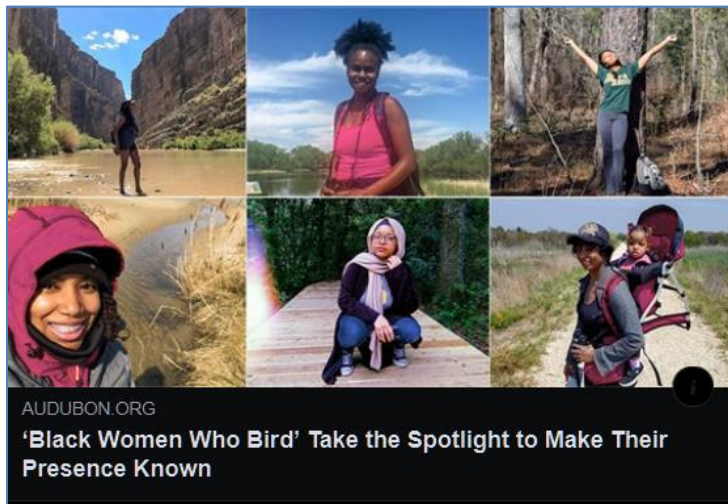
BCP PARTNER EDUCATION SUMMARY

FY 2020 Third Quarter: April 1 – June 30, 2020

City of Austin, Travis County, The Nature Conservancy, Westcave Preserve, Wild Basin Preserve, and Travis Audubon's Baker Sanctuary

3rd Quarter Highlights

CITY OF AUSTIN



- Most community engagement moved online, with tiny groups of volunteers contributing to masked, distanced workdays when appropriate. We held an online appreciation event for Golden-cheeked Warbler re-sighting volunteers to share photos (photo by volunteer Lori Mallory pictured above right), stories from the field, and a little time together.
- On social media, we shared powerful stories and breathtaking photos of birds from near and far as part of the #BlackBirdersWeek (pictured above left). This nationwide effort, heralded from the Audubon Society to *Bird Watching Daily*, "was borne out of a large friend group of Black scientists and outdoor explorers who want to make sure the world knows that Black birders belong here, we are thriving, and our community is growing."
- Our actions on the Balcones Canyonlands Preserve can't undo the country's long history of inequality and violence, but we can and will continue to do our small part to build a diverse, welcoming BCP community for all. Volunteers, advisory councils, the BCCP, and staff are a part of that!



BCP PARTNER EDUCATION SUMMARY

FY 2020 Third Quarter: April 1 – June 30, 2020

City of Austin, Travis County, The Nature Conservancy, Westcave Preserve, Wild Basin Preserve, and Travis Audubon's Baker Sanctuary

BAKER SANCTUARY (TRAVIS AUDUBON)



- Braving COVID-19, rattlesnakes, and mysterious, unmanned, woodland balloons, volunteers Beth Samuelson, Toni Taylor, and Celeste Treadway conducted over 30 surveys and recorded a trove of data that will help to determine productivity, density, and distribution of the warblers at Baker Sanctuary. In addition to survey efforts, Toni had time to design a t-shirt (pictured above) memorializing the (presumably) late, great Rico Mauve, otherwise known as Mauve/Mauve:Mauve/Silver after the bands on his legs. Rico was banded several years ago but was not located this season on the study plot. All hope is not lost though - he may have dispersed to somewhere more festive.
- All work days were cancelled due to the pandemic but luckily labor laws do not regulate utilizing one's children as somewhat reluctant 'volunteers'. Their middle school angst was partially dispelled while tending to trails as well as the immaculate grounds surrounding the historic Baker Cabin and cemetery.

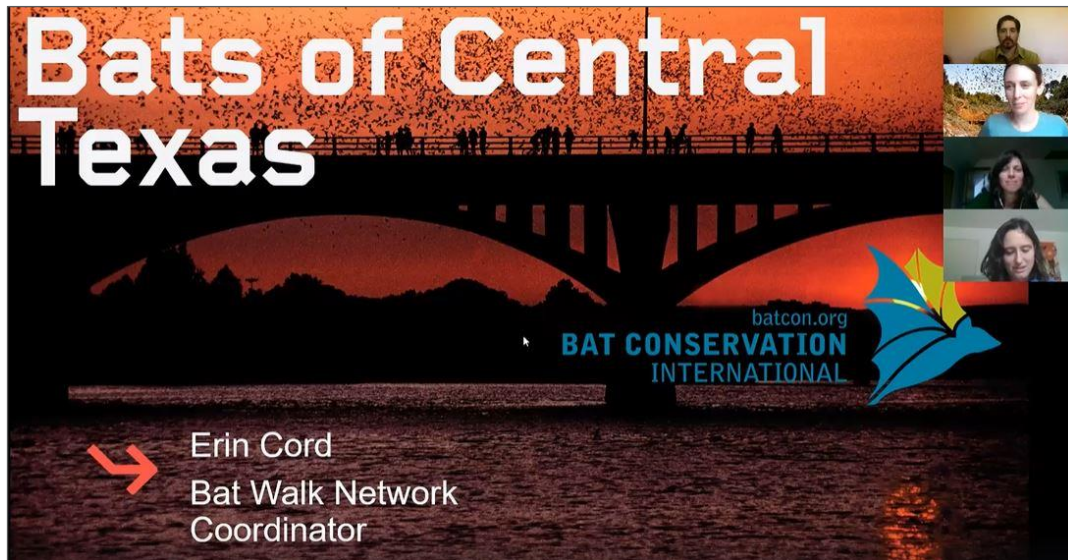


BCP PARTNER EDUCATION SUMMARY

FY 2020 Third Quarter: April 1 – June 30, 2020

City of Austin, Travis County, The Nature Conservancy, Westcave Preserve, Wild Basin Preserve, and Travis Audubon's Baker Sanctuary

TRAVIS COUNTY



- This quarter, Travis County and the City of Austin took the Wild Neighbors speaker series to the web. It was originally hosted at Concordia University Texas, but moved online to help prevent the spread of COVID-19. Holding the presentations online as webinars actually allows us to increase our reach, since people can join from anywhere from the comfort of their own homes. No traffic or parking issues involved! For those who can't make it for the live webinars, recordings of the talks are posted on our Facebook pages and the Travis County website. The Wild Neighbors series features subject experts each month to talk about Central Texas wildlife and how individuals can help their wild neighbors thrive. The first online edition of the Wild Neighbors speaker series featured Erin Cord of Bat Conservation International (pictured above)
- While we suspended the majority of our volunteer activities this quarter to help reduce the spread of COVID-19, we did work with a handful of volunteers helping with essential activities including patrol and Snowden garden maintenance. All volunteers worked outside and practiced social distancing and masking protocols.



BCP PARTNER EDUCATION SUMMARY

FY 2020 Third Quarter: April 1 – June 30, 2020

City of Austin, Travis County, The Nature Conservancy, Westcave Preserve, Wild Basin Preserve, and Travis Audubon's Baker Sanctuary

WILD BASIN WILDERNESS PRESERVE



- From April to June 2020, due to the presence of COVID-19 in the Austin community, all in-person programs for schools and the public were cancelled. Wild Basin held one online program called "Find Your Wild" affiliated with the City Nature Challenge in April.
- Wild Basin conducted two online volunteer trainings in June. Ten land steward and ecological monitoring volunteers were trained in techniques for safe access to the preserve during COVID-19 including Wild Basin updates, volunteer protocol, scheduling online shifts, and liability form compliance.
- Plant survey volunteers have been conducting surveys to update information and document new species. Preserve management volunteers have been doing erosion control, trimming, troubleshooting trespass issues, cutting off trespass access, and sign construction and installation (pictured above right).
- Volunteers have been working with staff and checking acoustic recorders, analyzing data, and scoring wildlife photos for a wildlife acoustic study as well as a wildlife photo study (pictured above left). Staff has been training student volunteers to score wildlife camera images. An anuran survey was also performed by a volunteer university researcher at a neighboring property.



BCP PARTNER EDUCATION SUMMARY

FY 2020 Third Quarter: April 1 – June 30, 2020

City of Austin, Travis County, The Nature Conservancy, Westcave Preserve, Wild Basin Preserve, and Travis Audubon's Baker Sanctuary

WESTCAVE PRESERVE



- Westcave has been able to reopen in a limited capacity for our members group and the public during the pandemic. Operating by reservation only, guests are able to experience the joy and wonder of the Westcave Grotto by scheduling a private preserve session or booking a limited capacity household group online. Social distancing practices of 10+ feet are in place and household groups rotate between locations in the grotto to maximize their time and space. One of the favorite spots for guests to relax is under the grotto as they listen to and watch the water fall into the pool below.
- During the end of May, Westcave provided some hikes at no charge during Black Birders Week as Black in Nature activities. We have plans to do other no-charge events like these in the future.



BCP PARTNER EDUCATION SUMMARY

FY 2020 Third Quarter: April 1 – June 30, 2020

City of Austin, Travis County, The Nature Conservancy, Westcave Preserve, Wild Basin Preserve, and Travis Audubon's Baker Sanctuary

ACTIVITY DEFINITIONS

Guided Hikes

Hikes on the BCP guided by staff or volunteers; includes education about the BCP, wildlife, and land management practices.

Programs / Presentations

Presentations by staff or volunteers about the BCP and related scientific and land management topics; includes educational events and programs.

Land Stewardship

Volunteer work on the BCP that includes removing invasive species, preparing for prescribed burns, creating fuel breaks, restoring habitat, patrolling, and maintenance of grounds, trails & facilities.

Ecological Monitoring

Includes surveys of endangered species, vegetation, and nuisance species such as cowbirds, hogs and red imported fire ants.

Campouts

Campouts on the BCP, usually organized by outside groups such as the Boy Scouts.

Visiting Groups / Educators

Groups visiting or hosting an event on the BCP that was not organized by BCP staff.

Administrative Help

Volunteer help with administrative work such as office work, research, and event coordination.

Training

Volunteer training & other trainings that support the BCCP's mission. Examples include educating emergency response and infrastructure maintenance staff about protecting sensitive environmental features and complying with clearing restrictions.