

Community Solar Program Offerings

Tim Harvey

Customer Renewable Solutions Manager



8-19-2020

© 2020 Austin Energy

Customer driven. Community focused.

Customer Renewable Solutions



Solar Incentives

- Residential
 - Education + \$2500 Rebate
- Commercial
 - 10 Year On-Bill Credits for Production
- Multifamily



Subscriptions

- GreenChoice
 - 100% Texas Wind
- Community Solar
 - 100% Local Solar



Customer driven. Community focused.

Renewable Subscription Options



Community Solar

- 100% of participants' electric use is offset by energy from local solar projects
- Half of La Loma's capacity dedicated to Customer Assistance Program (CAP) customers at discounted rate
- First Green-e® certified Community Solar program in the country!

GreenChoice

- 100% Texas Wind
- Powers Electric Vehicle Charging Stations
- Over 20,000 Customers Subscribed
 - Equivalent of removing the same amount of carbon from the air as 6 million trees
 - Avoids more than 350,000 metric tons of carbon emissions



Community Solar in Austin



Clockwise from Top Left: Palmer Event Center, La Loma Community Solar Farm, ABIA Blue Garage Carports

Community Solar

Provides access to solar energy to customers unable to install solar panels on their own homes:

- Renters and condo owners
- Homeowners with shaded roofs
- Customers unable to make the upfront investment in rooftop systems
- Customers with poor credit

Participants receive the benefits of solar power without actually owning/maintaining the solar panels on-site

Austin Energy can leverage purchasing experience and economies of scale to create a low cost, high value solar offering

Supports Austin's Climate Protection Plan and local solar goals



Palmer Events Center Community Solar 165kW

Site Considerations



- Public Facing
 - High Visibility
 - In the Community
- Downtown Grid
 - Had to bring Regular DG to it
- City of Austin owned building
- Utilized Local Workforce

La Loma Community Solar 2.6MW

Site Considerations



- Highest Best Use
 - Not suitable for other uses (e.g. parks, housing)
 - Flood plain
 - Gas Easement
 - Railway
- Co-located with substation
- Distribution feeder allows for capacity
- Land owned by City of Austin
- Utilized Local Workforce

ABIA Community Solar 1.5MW

Site Considerations



- Dual Purpose Solar-Carport
 - New Garage was designed to have carports
 - Avoided costs of putting metal roofing on top
- Aligned with new Construction
- To Co-Located EV Charging
- High Visibility
 - Marketing opportunity to educate and cross promote programs
- Utilized Local Workforce



Local Solar RFP

Currently on the street

- Distribution Grid connected
- Respondents to provide diversity, inclusion and local workforce development plan
- Also looking at storage options
- [RFP For the Purchase of Renewable Capacity and Energy from Local Renewable Energy Resources](#)



Image: RALPH BARRERA / AMERICAN-STATESMAN

Community Solar

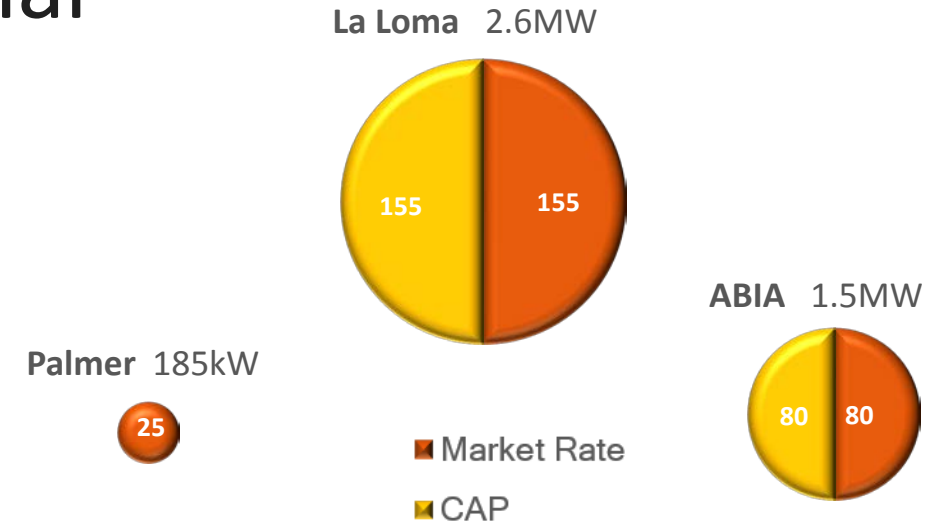
First Green-e® certified Community Solar program in the country!

100% of participants' electric use is offset by energy from local solar projects

Community Solar Charge replaces Power Supply Adjustment (PSA) on participants' bills

Half of La Loma's capacity dedicated to Customer Assistance Program (CAP) customers at discounted rate

1.5 MW Austin-Bergstrom International Airport project currently under construction, to be completed in 2020



Current Program	Market-Rate	Low-Income
Est. # of Participants	160	135
Community Solar Rate	4.27¢/kWh	2.77¢/kWh
Δ vs 2019 PSA	+1.13¢/kWh	-0.37¢/kWh

Community Solar Discount for CAP Customers

CAP Customers may sign up and receive Community Solar at a reduced rate plus receive no-cost energy efficiency improvements.

CAP Auto Enrollment:

- Medicaid Program
- Supplemental Nutrition Assistance Program (SNAP)
- Children's Health Insurance Program (CHIP)
- Telephone Lifeline Program
- Travis County Comprehensive Energy Assistance Program (CEAP)
- Medical Access Program (MAP)
- Supplemental Security Income (SSI)
- Veterans Affairs Supportive Housing (VASH)

Income verification also available to meet eligibility.

Call 855-319-6630 with CAP questions



Shared Solar Pilot

- Allows for single point of interconnection with virtual allocation of generation to tenants
- Testing automation in the billing system
- Targeting July 2021 for program launch
 - limited to LMI properties with possible further expansion.
- 5th Multifamily project added in April

Project Name	Date Installed	# of units	Installed Cost (\$)	Rebate Amount	Capacity (kW-DC)	Annual kWh
Guadalupe Jeremiah LP	9/27/2018	35	\$ 125,000	\$ 103,950	57.75	83,615
GNDC La Vista	1/16/2019	22	\$ 172,730	\$ 97,090	97.09	142,798
Four Points	9/27/2018	120	\$ 431,809	\$ 200,020	200.02	263,843
Chalmers South	9/27/2019	86	\$ 291,642	\$ 151,240	151.24	202,743
Goodrich	4/14/2020	120	\$ 453,500	\$ 258,400	258.4	357,058
Total		383	\$ 1,474,681	\$ 810,700	764.5	1,050,057

HACA at Goodrich

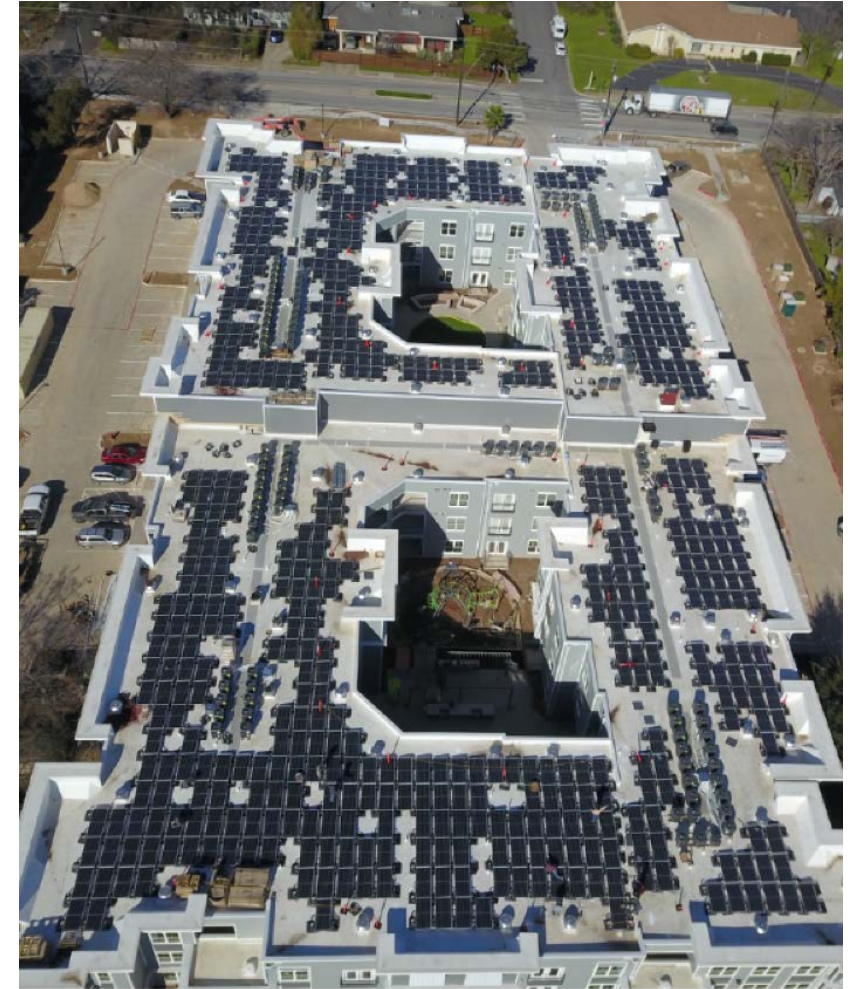


Photo by Lighthouse Solar



Thank You!

Tim Harvey

**Customer Renewable Solutions
Manager**

512-482-5386

tim.harvey@austinenergy.com

solar@austinenergy.com



**Customer Driven.
Community Focused.SM**

