

Austin Energy

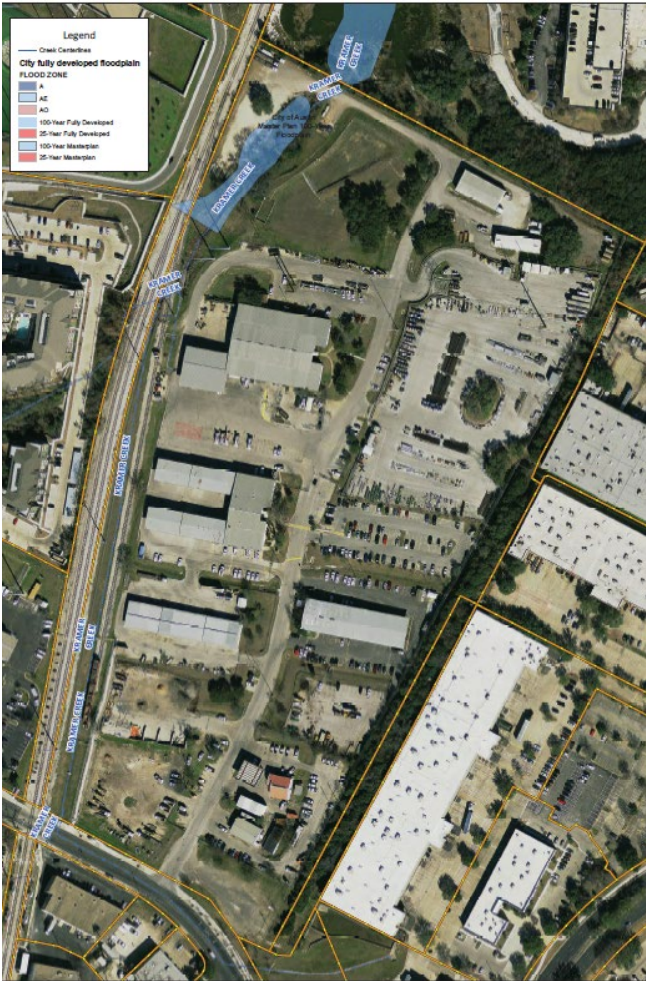
North Burnet/Gateway Plan and the Kramer Lane Service Center

Susan Groce - Shared Services Process Manager



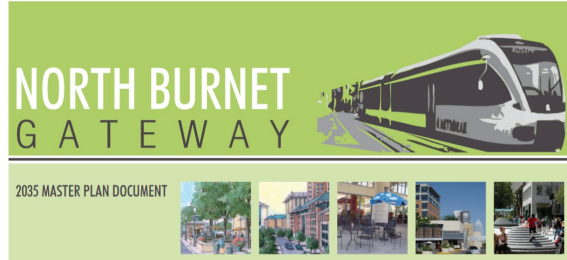
November 9, 2020

North Burnet/Gateway Plan and the Kramer Lane Service Center Meeting Topics

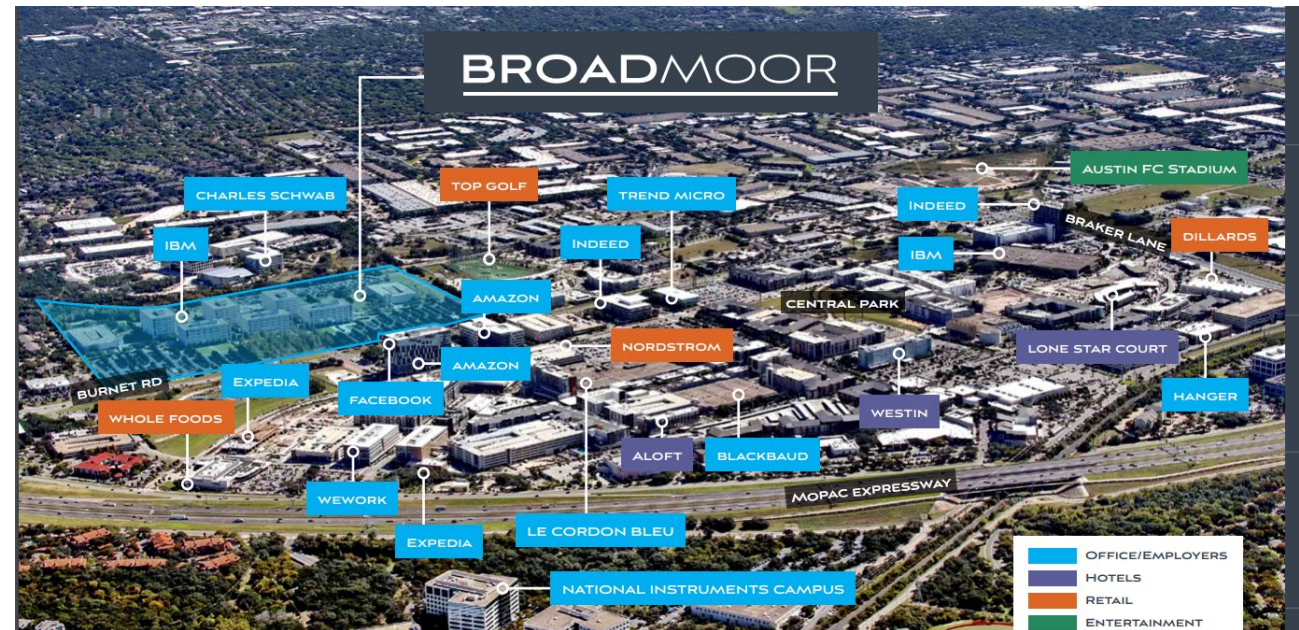


- 1) Executive Summary
- 2) Site History and Uses
- 3) Site Ideally Located to Serve Area Growth
- 4) Support of Mobility Improvements
- 5) Steps to Kramer Lane Substation Energization

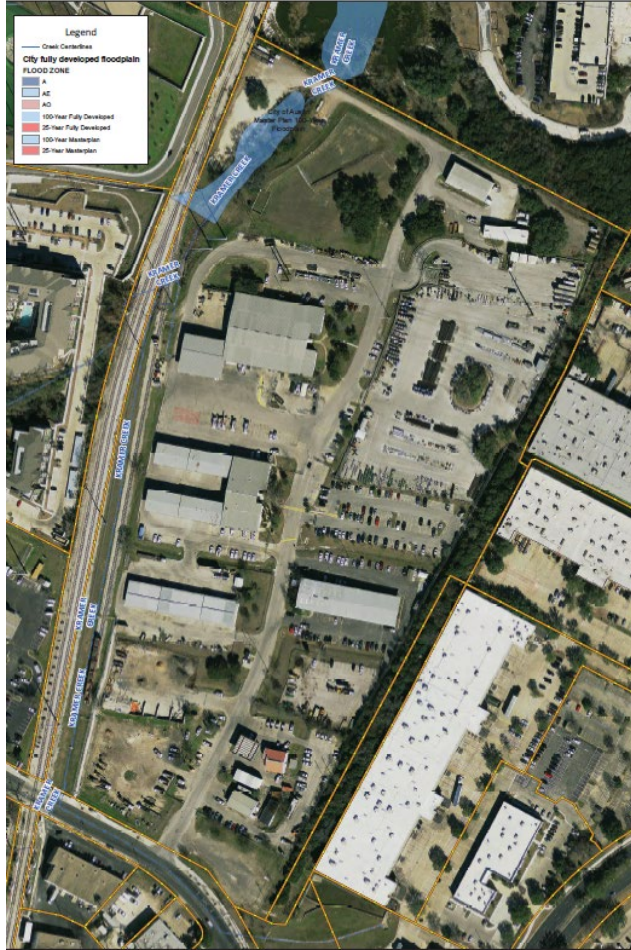
Austin Energy support of the North Burnet/Gateway Plan Executive Summary



- 1) The North Burnet/Gateway Plan has been a tremendous success for the City
- 2) The rapid growth has resulted in a level of urgency for building a new substation by May 2023
- 3) The Kramer Lane Service Center site is ideally located adjacent to Broadmoor and is a key link in the path of the Red Line Bike Trail
- 4) City Council and the Mayor have been very supportive of a new substation at the Kramer Lane Service Center site



Kramer Lane Service Center Site History and Uses

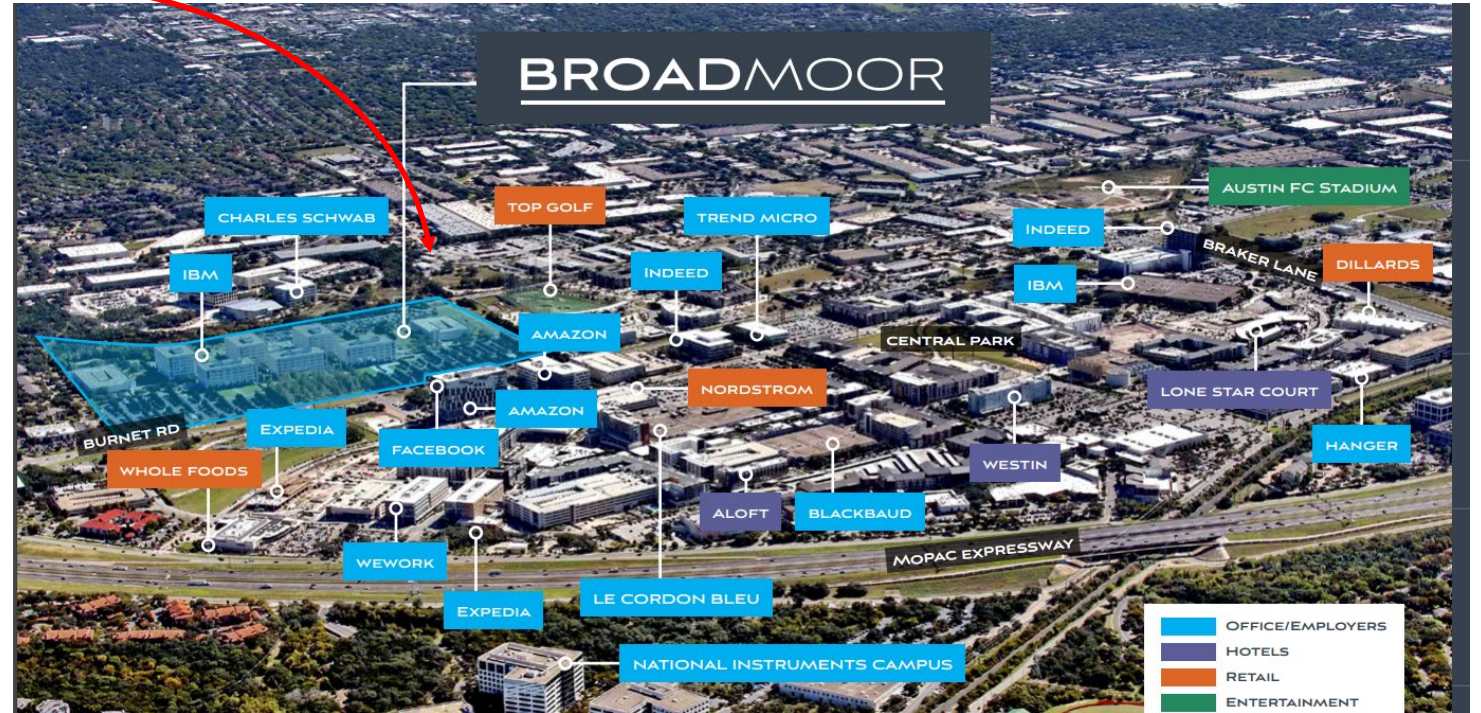
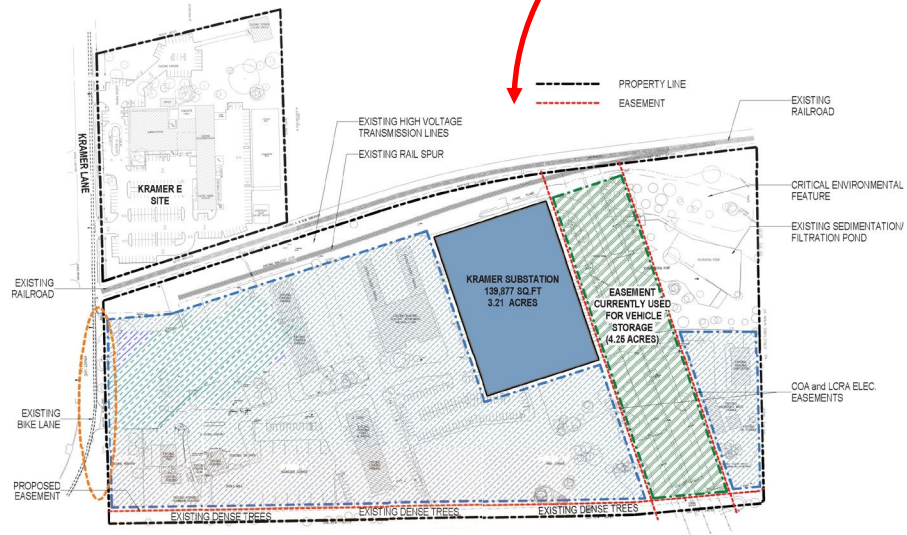


- 33.56 acre tract purchased in 1965 for Municipal Use
- Austin Energy
 - 217 Employees located at Kramer Lane facilities
 - Office buildings, training yard, warehouse space and laydown yards
 - 300+ vehicles, including trucks, vans, cars, forklifts, trailers and parking for personal and contractor vehicles
- City of Austin Fleet Services - Fuel Station and Car Service facility
- City of Austin Public Works (Street and Bridge)
 - Parking for department trucks, vans, cars, forklifts, trailers and contractor and employee vehicles
 - Stockpile and materials storage
- Site also provides water quality features for storm water run-off

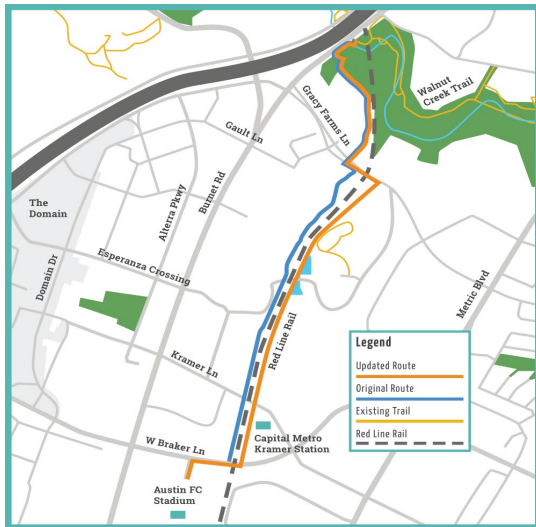
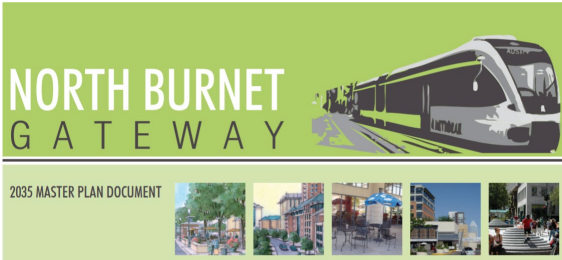


Kramer Lane Service Center

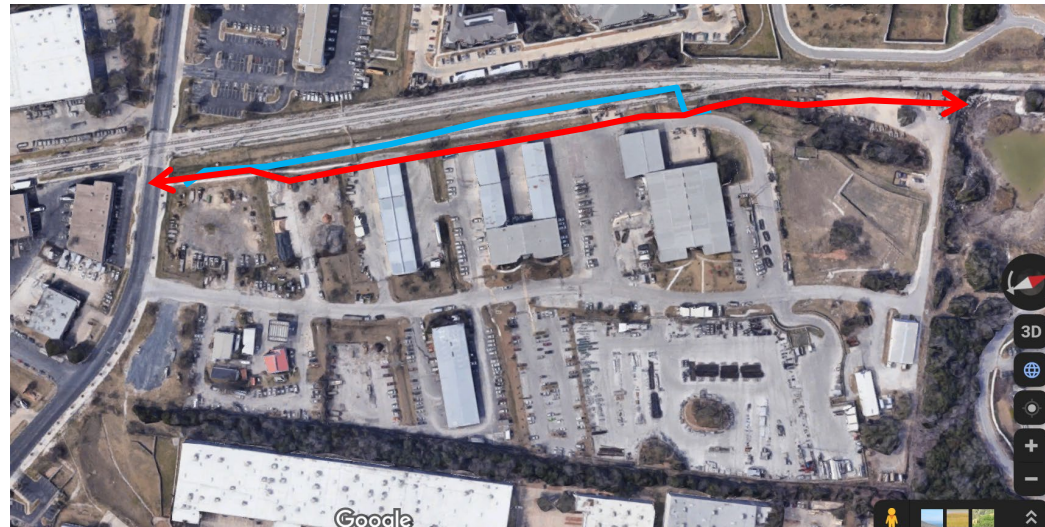
Site Ideally Located to Serve Area Growth



Kramer Lane Service Center Support of Mobility Improvements



- **Urban Trails – Red Line Trail easement**
 - Austin Energy supports granting of a western easement for a safe and functional trail
 - Sacrificing the rail spur will provide more space for the requested trail location
- **Capital Metro improvements for Project Connect**
 - Drainage easement
 - Rail easement for second rail line (double track)
- **Burnet Road Corridor Project**
 - Austin Energy working with Corridor Office to respond to request for drainage easement for Burnet Road Corridor project



Kramer Lane Service Center

Steps to Kramer Lane Substation Energization

- On October 29, 2020, City Council passed Resolution initiating rezoning to Public (P) zoning
- Site Development Permitting
- Complete process of Public (P) property rezoning before Planning Commission and City Council
- Engineering and Equipment Order and Delivery
- Environmental Assessment
- Substation Construction
- Energize Substation – May 2023





**Customer Driven.
Community Focused.SM**

