

Transit Enhancement Program Update

A solid blue horizontal bar with a diagonal cut on the right side, extending across the width of the slide.

Urban Transportation Commission

February 9, 2021



Agenda

- Transit Enhancement Program Overview
- Recent Project Examples
- Upcoming Project

Transit Enhancement Program Overview

- History
 - Transit Priority Working Group
 - Program within Austin Transportation Department
- Funding
 - 2018 Interlocal Agreement - \$3M
 - 2020 Mobility Bond (Proposition B) - \$19M
- Focus
 - Improve transit speed, reliability and safety
 - Enhance rider comfort and access to transit

Recent Project Examples

- Spot Improvements
 - North Lamar Blvd at West Powell Ln
- Corridor Improvements
 - Guadalupe & Lavaca Red Lanes
- Design Support
 - ACC Riverside Transit Hub

Spot Improvement: North Lamar Blvd at West Powell Ln

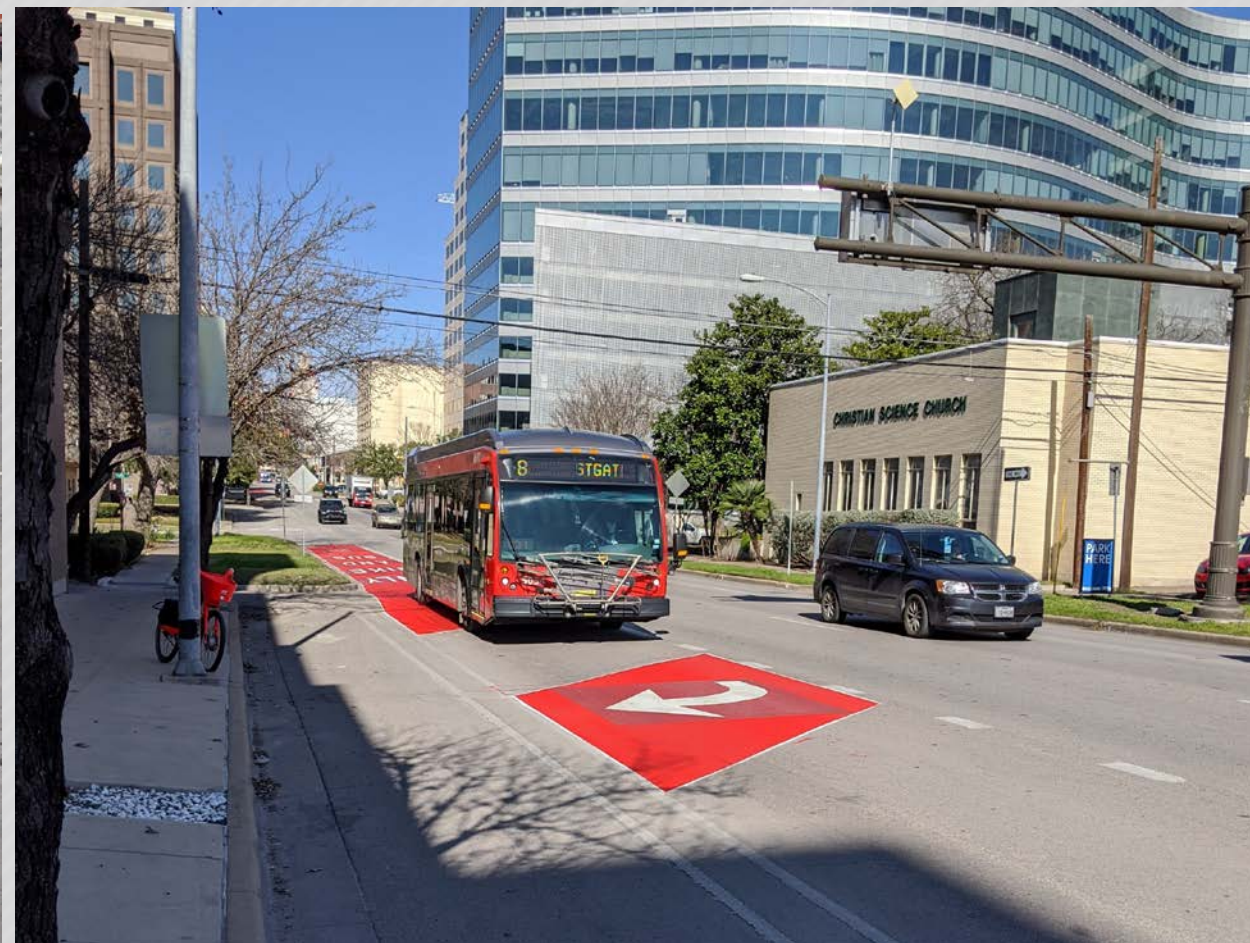
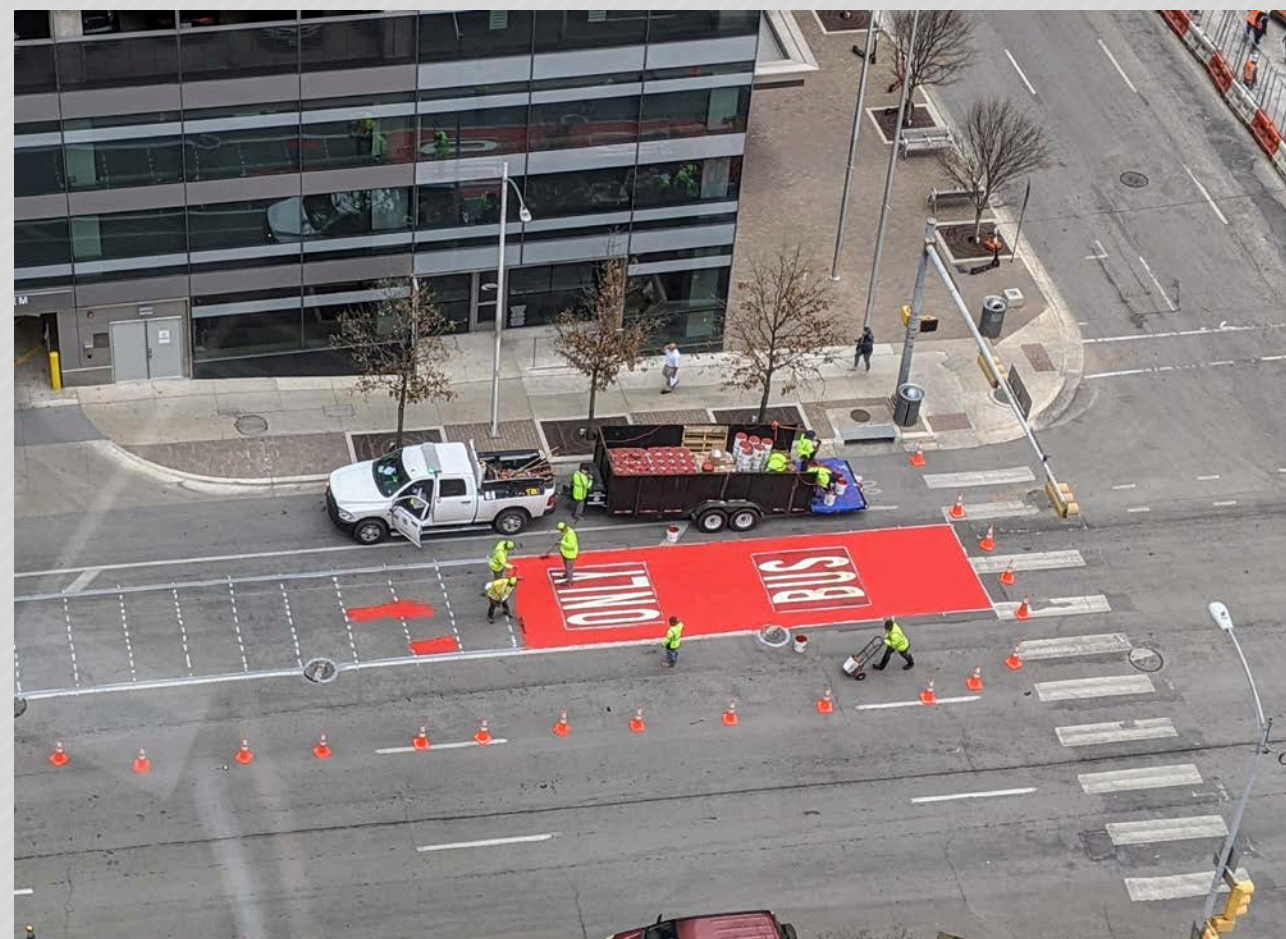


● – New bus stop

● – Bus stop closed

■ – New signaled intersection

Corridor Improvement: Guadalupe & Lavaca Red Pavement Markings



Design Support: ACC Riverside Transit Hub



East Riverside Drive Transit Priority Lanes



East Riverside Drive Transit Priority Lanes

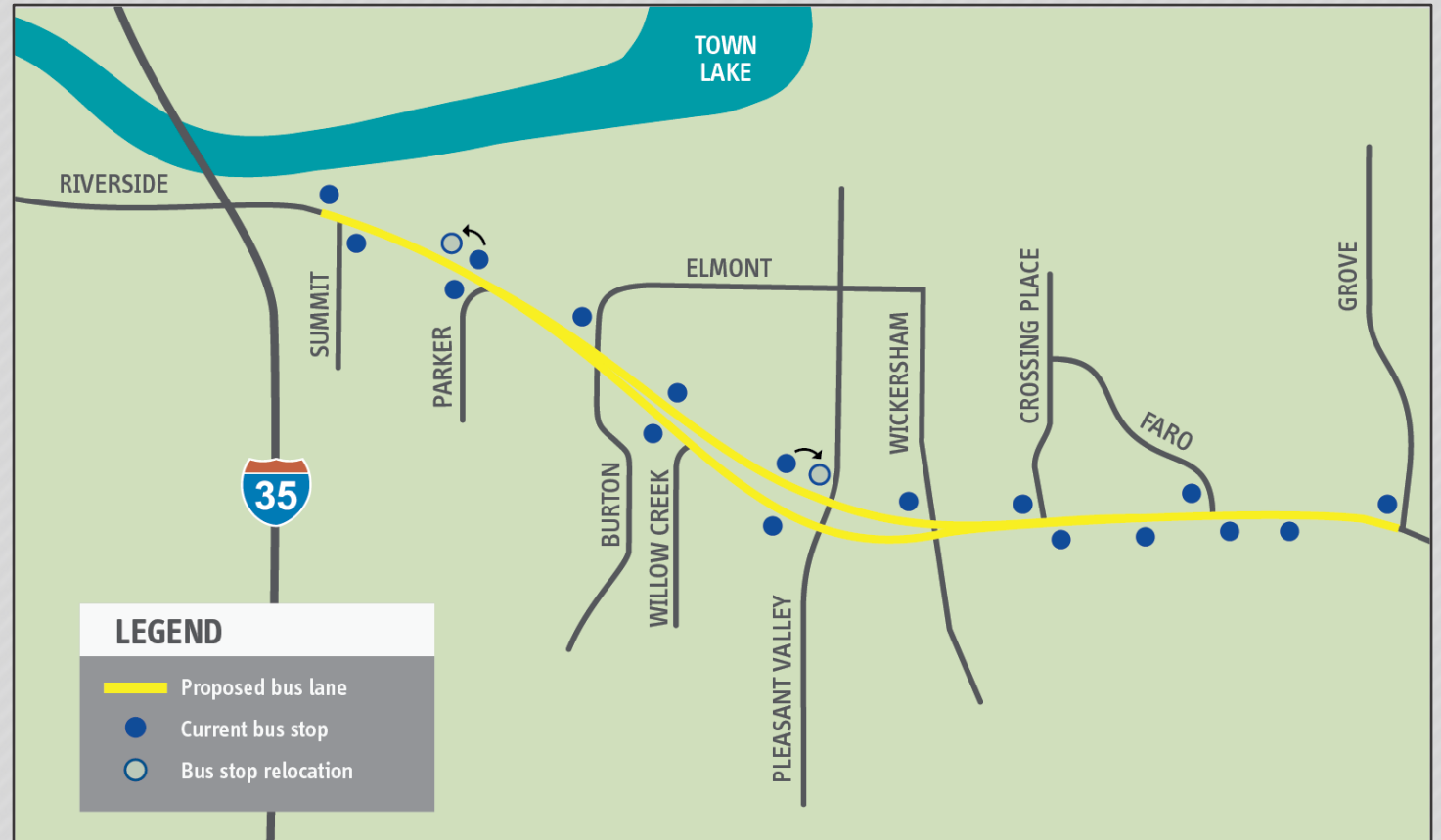
This February, the Austin Transportation Department and Capital Metro are partnering to install transit priority lanes on East Riverside Drive from Grove Boulevard to Summit Street.



EAST RIVERSIDE DRIVE TRANSIT PRIORITY LANES

East Riverside Drive Transit Priority Lanes: Grove Boulevard to Summit Street

- 2-mile stretch between Grove and Summit
- Install complete by April 2021
- Right-most, curbside travel lane will be marked with a solid white line and “BUS LANE ONLY”
- Also includes new signage
- Other vehicles permitted to enter the transit priority lanes for right-turn only.

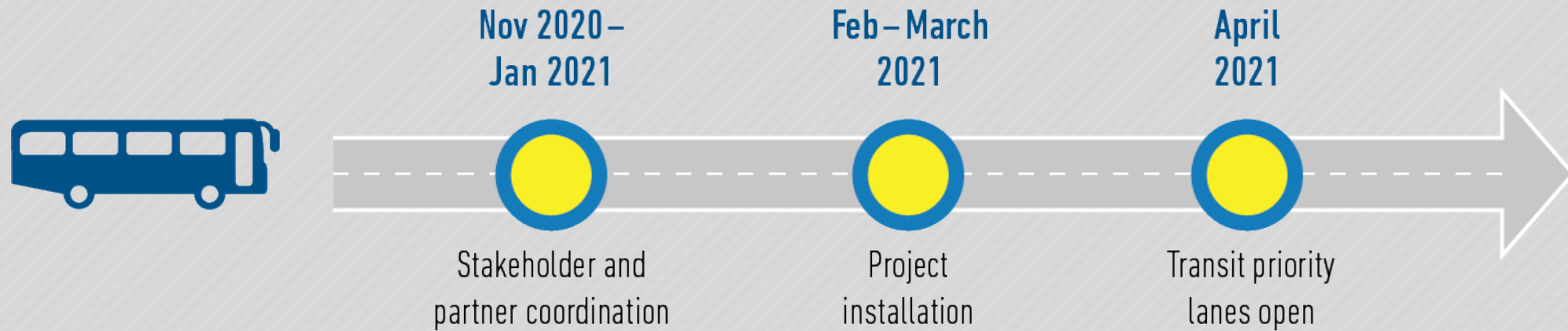


Why Transit Priority Lanes on East Riverside Drive?

- Responds to community demand for better transportation options
 - Interim improvement in advance of Project Connect Blue Line work
- Major transit corridor with high ridership and heavy peak delay
 - Nine routes carry almost 20% of daily transit riders
 - Transit service improvements benefit all riders on these routes
- Supports City's multimodal goals
 - 50/50 mode share
- Supports job access, economic recovery and equity



Project Timeline



Learn more:

austintexas.gov/transit

capmetro.org/majorprojects

Thank You!

Caitlin D'Alton

Transit Enhancement Program
Austin Transportation

Caitlin.D'Alton@austintexas.gov

Nadia Barrera-Ramirez

Transit Speed & Reliability Program
Capital Metro

Nadia.Barrera-Ramirez@capmetro.org

