

WATER and WASTEWATER COMMISSION Lead Strategies Update

Matt Cullen, P.E. | Gary Chauvin

May 5, 2021



Water and Wastewater Commission Meeting

May 5, 2021

- 💧 EPA's Lead and Copper Rule Revisions
- 💧 AW Compliance - Sampling Results for Lead
- 💧 Lead Service Line Inventory
- 💧 School and Childcare Facility Sampling
- 💧 Lead Webpage and Customer Requested Lead Sampling



EPA's Lead and Copper Rule Revisions



- 💧 **Goal:** Further reduce exposure to lead in drinking water
- 💧 Final rule issued by EPA on January 15, 2021
- 💧 **Current compliance date for water systems: January 16, 2024**
- 💧 EPA announced that final rule is under review & will seek more public input
 - Compliance deadline may be delayed to **September 16, 2024**



EPA's Lead and Copper Rule Revisions (continued)

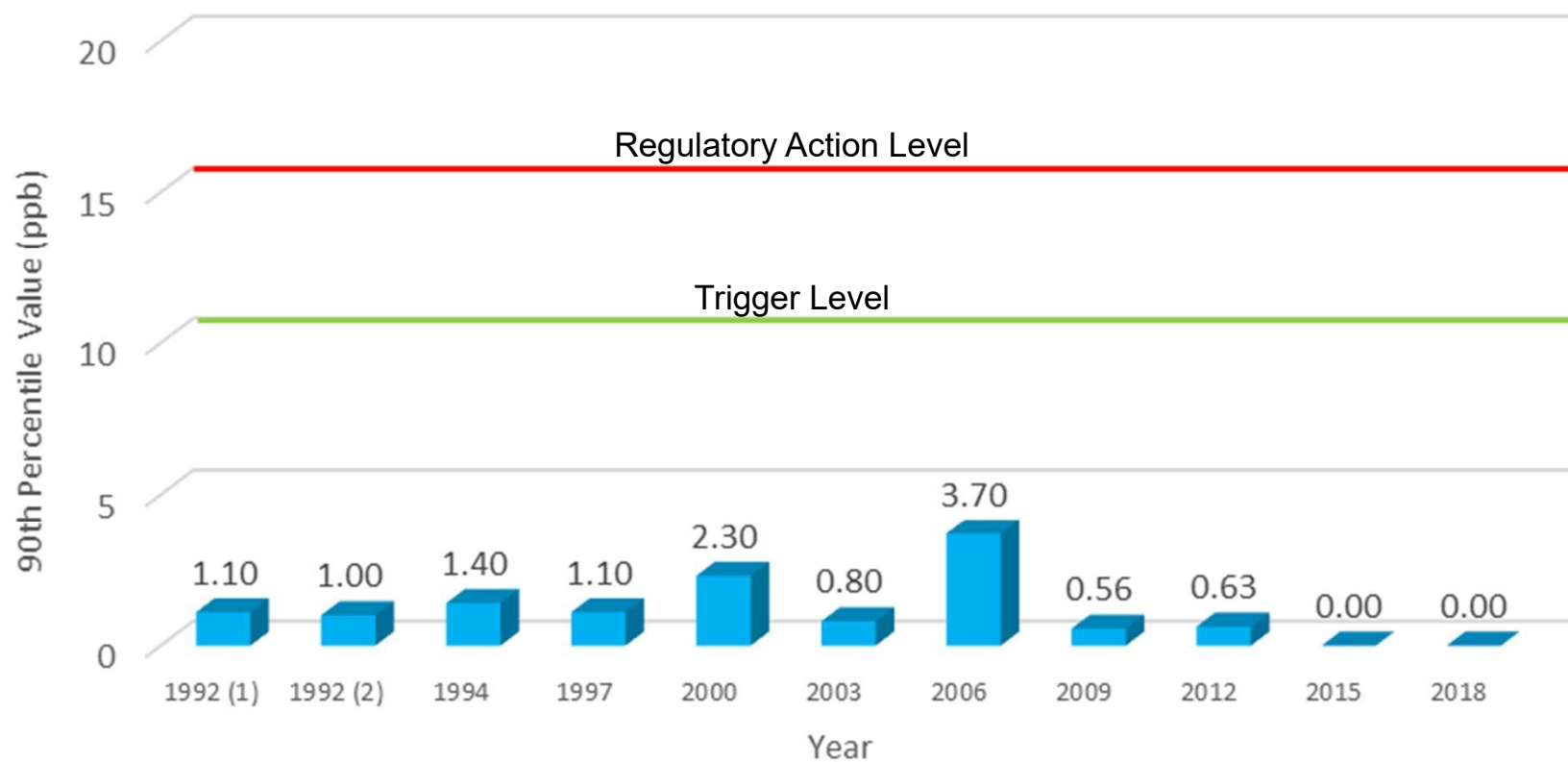


💧 Several major changes from previous rule:

- **Lead Service Line Inventory**
- Lead Service Line Replacement Plan (as applicable)
- **Lead monitoring at schools and childcare facilities**
- New lead "Trigger Level" of 10 parts per billion (ppb)
 - **Lead "Action Level" of 15 ppb is unchanged**
- Possible changes to sample locations for compliance monitoring
- New mandatory language on lead for Annual Water Quality Report



Lead Compliance Sampling Results



Lead Service Line Inventory

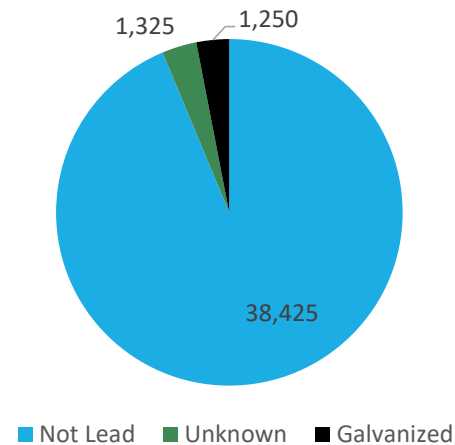
- 💧 Identify water service line materials
 - Includes public & private service line
- 💧 Categorize service line material
 - Lead
 - Galvanized Requiring Replacement
 - Non-lead
 - Lead Status Unknown
- 💧 Complete by January 16, 2024 & submit to TCEQ
- 💧 **AW Goal:** All service lines in “non-lead” category
 - LSL Replacement Plan required as applicable



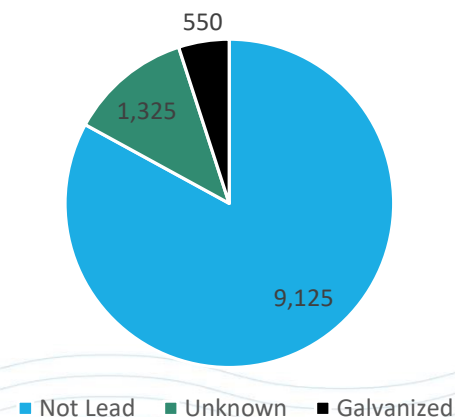
Lead Service Line Inventory (continued)

- Austin's code allowed lead services on the public side until 1954, on the private side until 1967
- After reviewing all tap cards prior to 1956
 - Not lead – 30,000
 - Unknown – 10,000
 - Galvanized – 1,000
- 9,675 Unknown/Galvanized field inspected so far; 1 lead found
 - No lead detected in pre or post replacement sampling

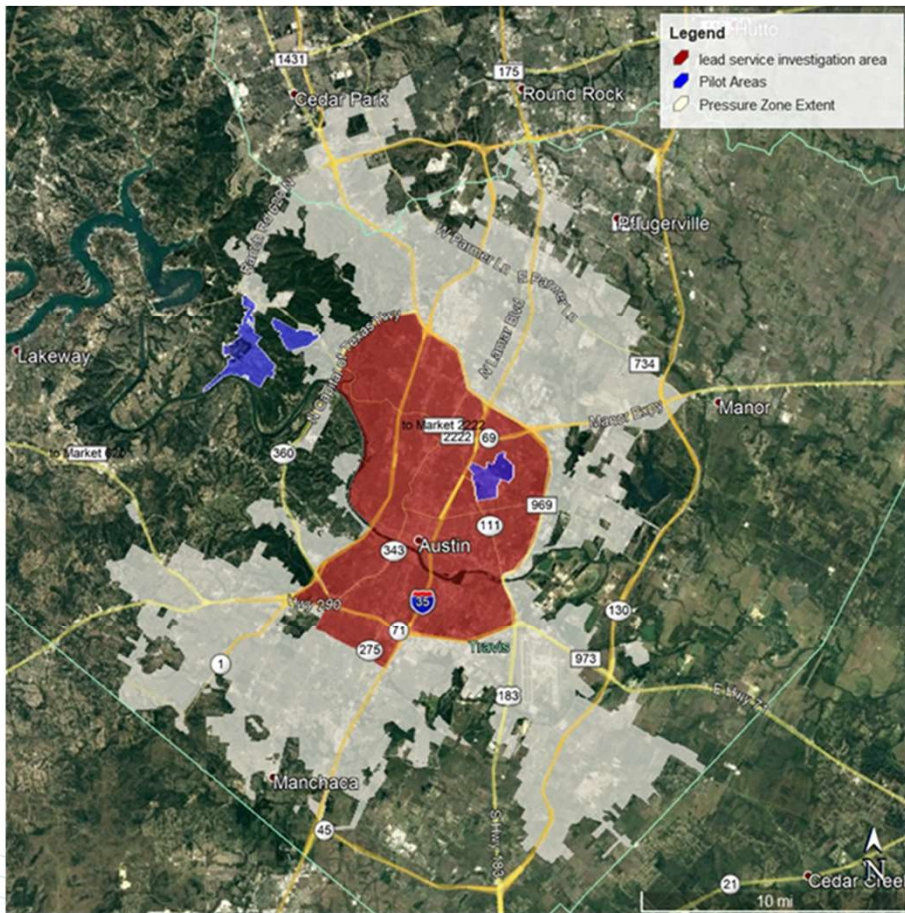
Public Side Materials



Private Side Materials



Lead Service Line Inventory (continued)



- Area in red is approximate area developed as of 1960
- Red area contains approximately 60,000 meters
 - 40,000 already investigated
- Approximately 190,000 meters outside red area

School & Child Care Facility Sampling



3Ts for Reducing Lead in Drinking Water
in Schools and Child Care Facilities

A Training, Testing, and Taking Action Approach

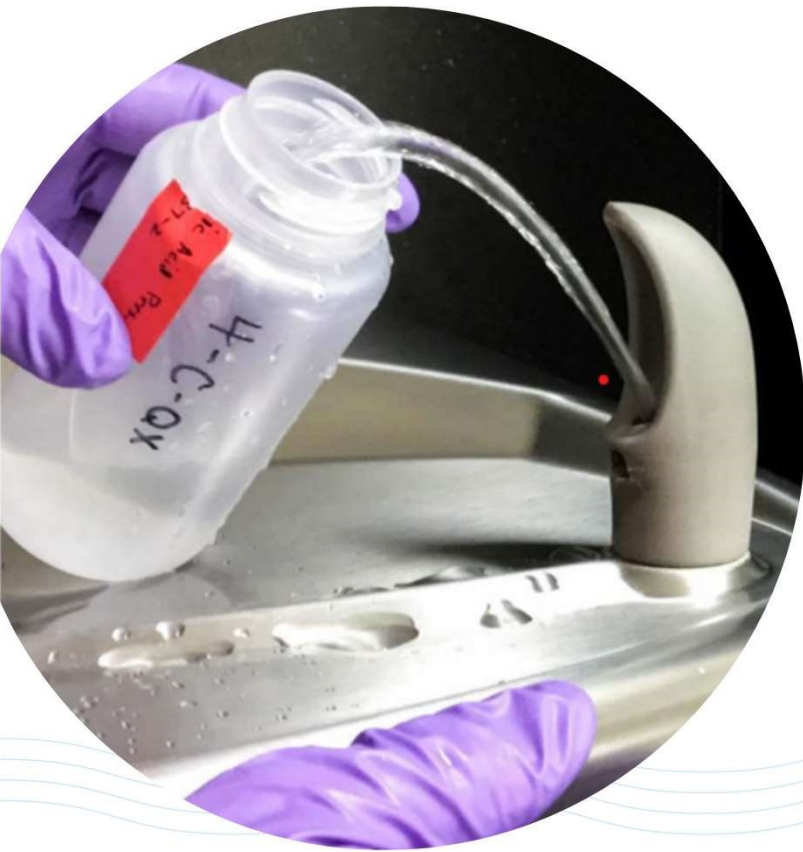
Revised Manual



- ◆ Applies to all elementary schools & licensed childcare facilities built before 2014
- ◆ One 5-year round of sampling conducted
 - 20% of schools/facilities per year
 - 5 taps per school, 2 taps per childcare facility
 - Upon request thereafter
- ◆ Secondary schools sampled upon request
- ◆ AW provides sampling instructions, bottles, & lab analysis
 - School/facility staff can collect samples
- ◆ EPA's 3Ts for Reducing Lead in Drinking Water Toolkit



Lead Webpage and Customer Requested Lead Sampling



- 💧 AW Lead info page at:
www.austintexas.gov/lead
- 💧 Requested for 21 residences over the last year
 - Two samples at each address
- 💧 20 residences had non-detect results, 1 residence had a detect
 - Detect was 1.9 ppb in first sample, non-detect in second sample
 - Cause of detection is internal plumbing



Questions?

