

# ***A Sustainable Greenway for South Austin***

***Presentation to the Parks and Recreation Board May 25, 2021***



ASAKURA  
ROBINSON



The Nature  
Conservancy



**StDavid's**  
**FOUNDATION**



ONGOING  
REPEATED  
FLOOD  
EVENTS

2006 - TODAY  
COMMUNITY-LED  
NEIGHBORHOOD  
IMPROVEMENTS

2015 - TODAY  
CITY-INITIATED  
FLOOD-RISK  
REDUCTION

TOMORROW  
WILLIAMSON  
CREEK  
GREENBELT  
AS RESILIENT  
CONNECTED  
SPACE

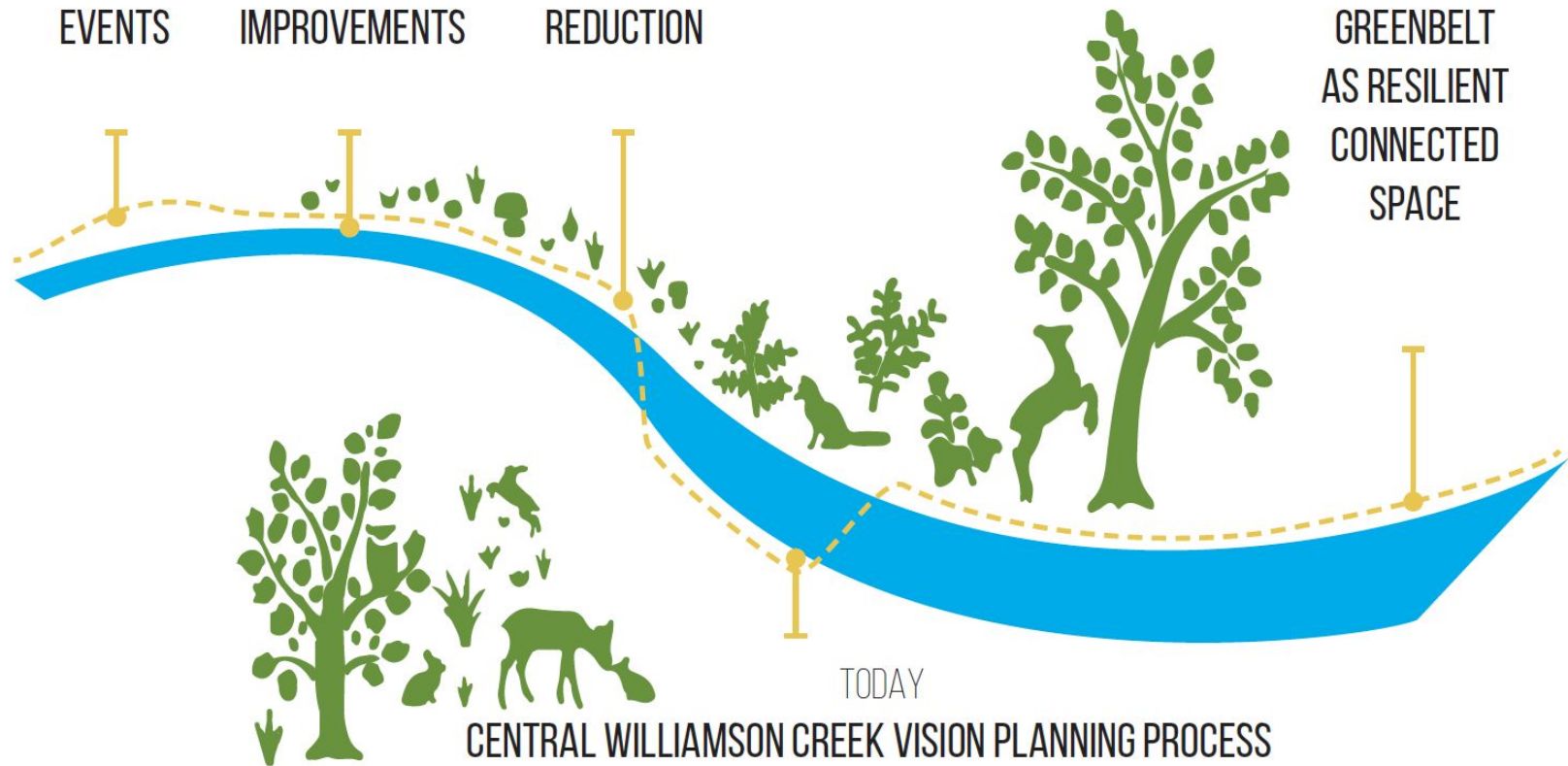






Photo Credit: Kari Spiegelhalter





Photo Credit: Kari Spiegelhalter



# Community Engagement

- Community & City Working Groups
- iNaturalist
- Conversation Toolkit
- Virtual Creek Stomps
- Creek Stomp Journal
- Flat Stanley
- Social Pinpoint interactive map
- Creek Chats - Virtual & socially distanced Pop-ups
- Virtual Community Picnics
- Newsletters, social media, listservs
- Participatory Budget
- Creek Idea Cards





# THE DESIGN PROCESS

The Central Williamson Creek Greenway Vision Plan was created over a 11-month period

## Feedback on Social Pinpoint Timeline



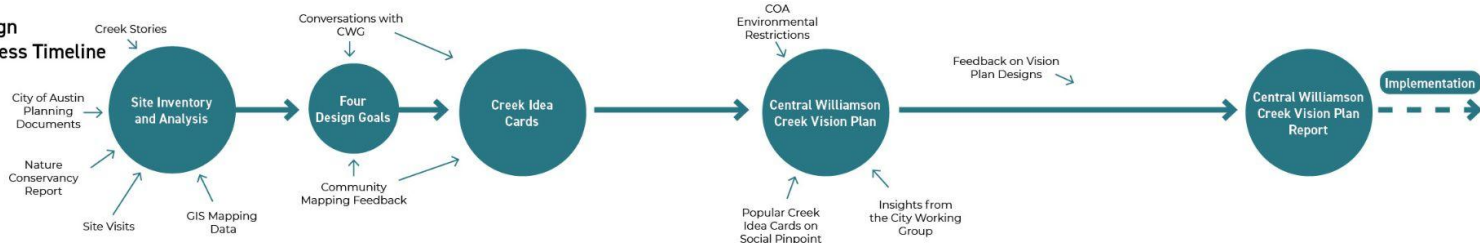
## Social Pinpoint

Social Pinpoint was the online virtual community engagement platform utilized to gather ideas and feedback from the general public throughout this project.

## Meetings and Presentations Timeline



## Design Process Timeline



Commission and Board Meetings



Community Working Group Meeting



Community Meeting



COA Working Group Meeting



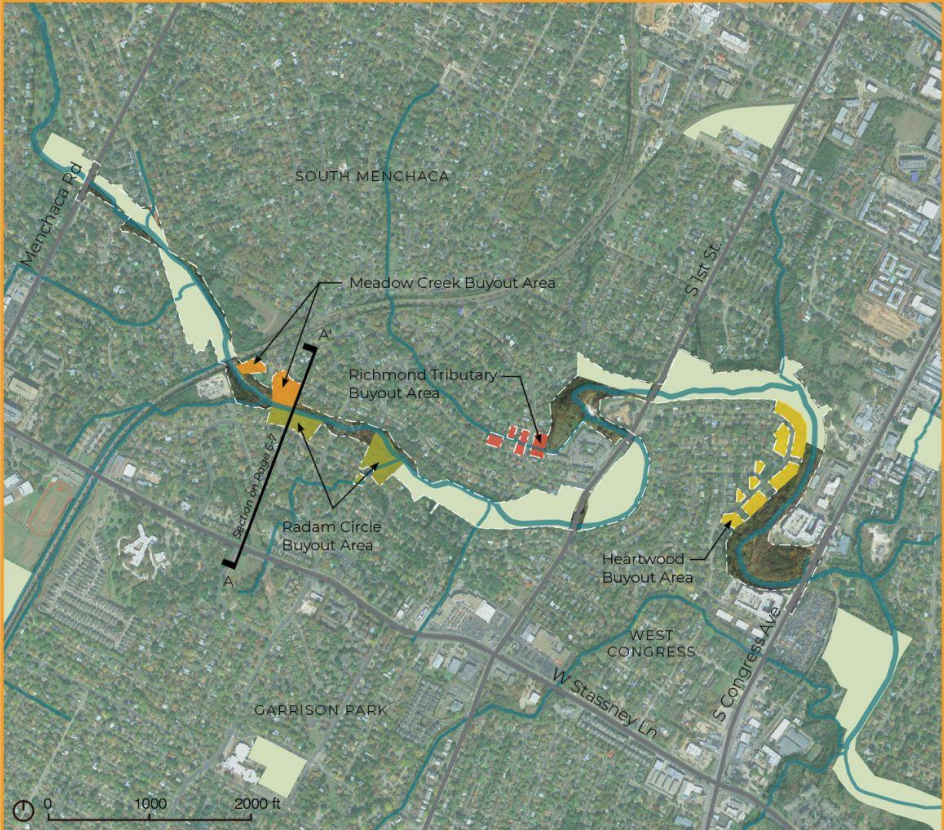
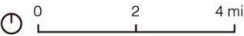
Community Celebration



# CENTRAL WILLIAMSON CREEK GREENWAY

## Legend

- Meadow Creek Buyout Area
- Radam Circle Buyout Area
- Richmond Tributary Buyout Area
- Heartwood Buyout Area
- Parks and Recreation Department Land
- Creeks



Data sources: City of Austin, Google, The Nature Conservancy, USGS

# CENTRAL WILLIAMSON CREEK GREENWAY



# THE FUTURE CENTRAL WILLIAMSON CREEK IS...

1.

## A RESTORED, BIODIVERSE GREENWAY

### DESIGN STRATEGIES

- Enhance biodiversity through floodplain restoration
- Preserve the creek's wild character
- Reveal ecology through environmental education experiences
- Balance access with conserving floodplain ecology

3.

## AN ACCESSIBLE AND VISIBLE GREENWAY

### DESIGN STRATEGIES

- Connect all communities to the creek
- Orient through clear wayfinding
- Reveal the creek's ecology and history
- Prioritize key land acquisition for trail connectivity

2.

## A COMMUNITY- CENTERED GREENWAY

### DESIGN STRATEGIES

- Support community-built projects
- Create inviting gathering spaces at key nodes
- Integrate community agriculture and agroforestry

4.

## AN ACTIVE AND CONNECTED GREENWAY

### DESIGN STRATEGIES

- Integrate accessible creek experiences
- Connect to public transportation and community resources
- Create activities for all ages



## VISION PLAN ELEMENTS

These vision plan elements included in this design are a result of the “Creek Cards” community engagement process outlined in Chapters 3 and 4.



Creek & Woodland  
Restoration



Environmental  
Signage



Green  
Infrastructure



Invasive Species  
Management



Pollinator Nesting  
Boxes



Wildflower  
Planting



BYO Hammock  
Grove



Community  
Gardens



Community  
Message Boards



Food Forests



Labyrinth



Nature Play



Music Groves



Bonded Mulch  
Trail



Potential  
Easement or Land  
Acquisition



Natural Surface  
Trail



Wayfinding  
Signage



Weather Warning  
Signage



On-Street  
Bike Lanes



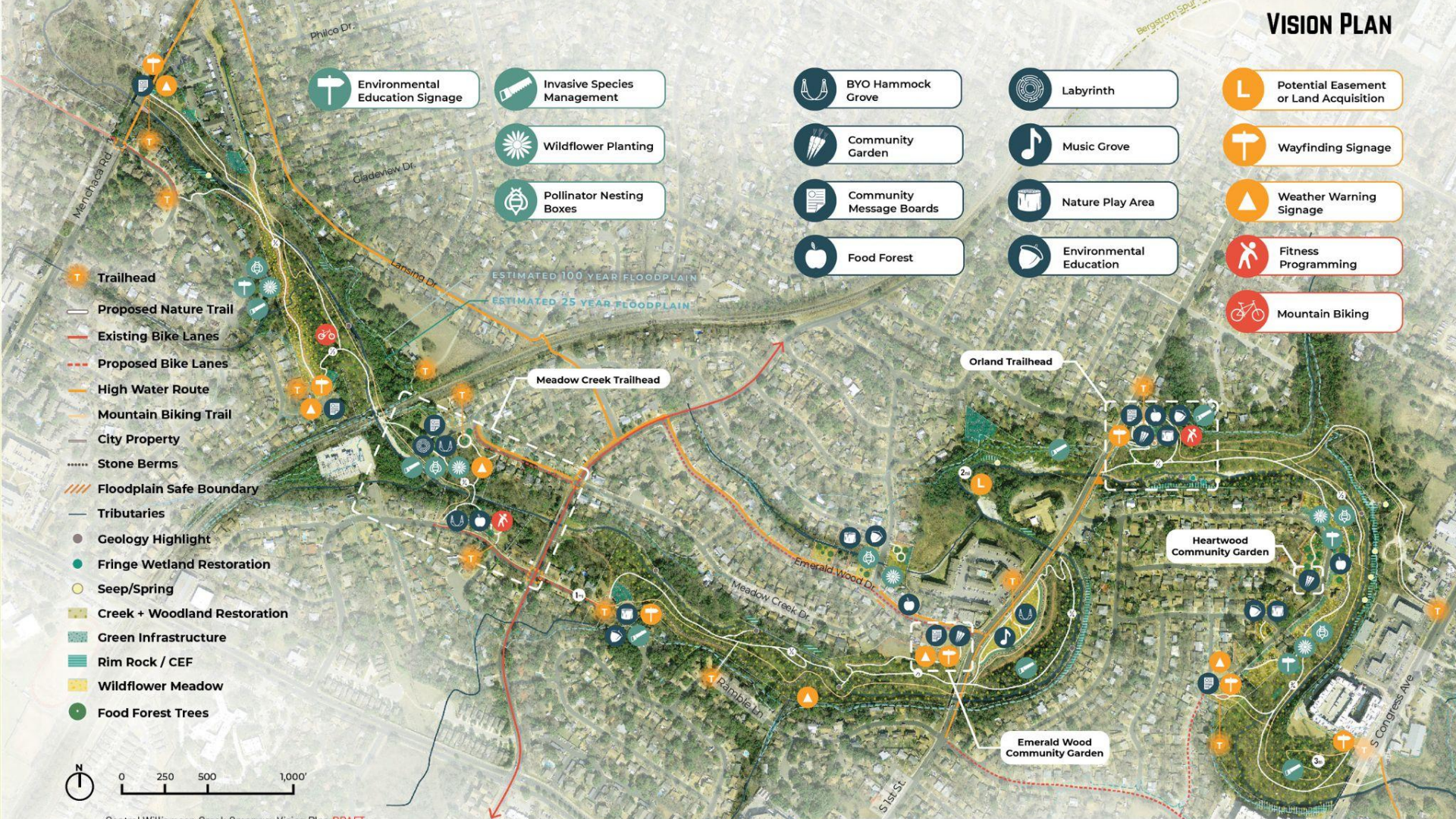
Fitness  
Programming



Mountain Biking



# VISION PLAN





# IMPLEMENTATION STREAM

## Tier 1 Projects

**Community -led collaborations with City of Austin landowners Watershed Protection, and the Parks and Recreation Department.**

They can involve work and support with non-profits such as Austin Parks Foundation and Keep Austin Beautiful. All projects must have prior approval by City of Austin property owners.

Toolkit Items Include:

- **Nature Trails**
- **Creek and Woodland Restoration**
- **Fitness Programming**
- **Food Forest**
- **Community Gardens**
- **Mountain Bike Trails**
- **Invasive Species Removal**
- **Labyrinth**
- **Music Grove**
- **Seating**
- **Pollinator Nesting Boxes**

---

### Maintenance Considerations:

For Tier 1 community and city-partnered projects, a maintenance agreement must be developed and approved by the City of Austin.

## Tier 2 Projects

**These are City of Austin landowner projects of \$50,000 dollars or less.** They are part of the missions and plans of WPD or PARD, but require advocacy from the community. The community may also be involved for portions of these projects such as planting days.

Toolkit Items Include:

- **Nature Play**
- **Green Infrastructure**
- **Wildflower Meadows**
- **Community Message Board**
- **Bonded Wood Mulch Trail**
- **BYO Hammock Grove**

---

### Maintenance Considerations:

Tier 2 projects should be maintained per City code and operations; however, the City may partner with non-profits and community groups to perform maintenance.

## Tier 3 Projects

**Projects that require long-term study and funding by City of Austin landowners that will total more than \$50,000 dollars and require major construction.** Funds and grants may be raised on behalf of the community to implement these projects.. They will have required community engagement on their further development and route to implementation.

Toolkit Items Include:

- **Land Acquisition and Easements**
- **On-street Bicycle Lanes**
- **Sidewalk-Shared Use Path**
- **Green Infrastructure (Large Scale)**

---

### Maintenance Considerations:

Tier 3 projects should be maintained per City code and operations; however, the City may partner with non-profits and community groups to perform maintenance.



# IMPLEMENTATION STREAM

## OPINION OF PROBABLE COST BY AREA

### AREA 1

TIER 1 - 15,000-30,000\*

TIER 2 - 206,000

TIER 3 - 320,000

Meadow Creek Trailhead

### AREA 2

TIER 1 - 15,000-30,000\*

TIER 2 - 175,000

Orland Trailhead

### AREA 3

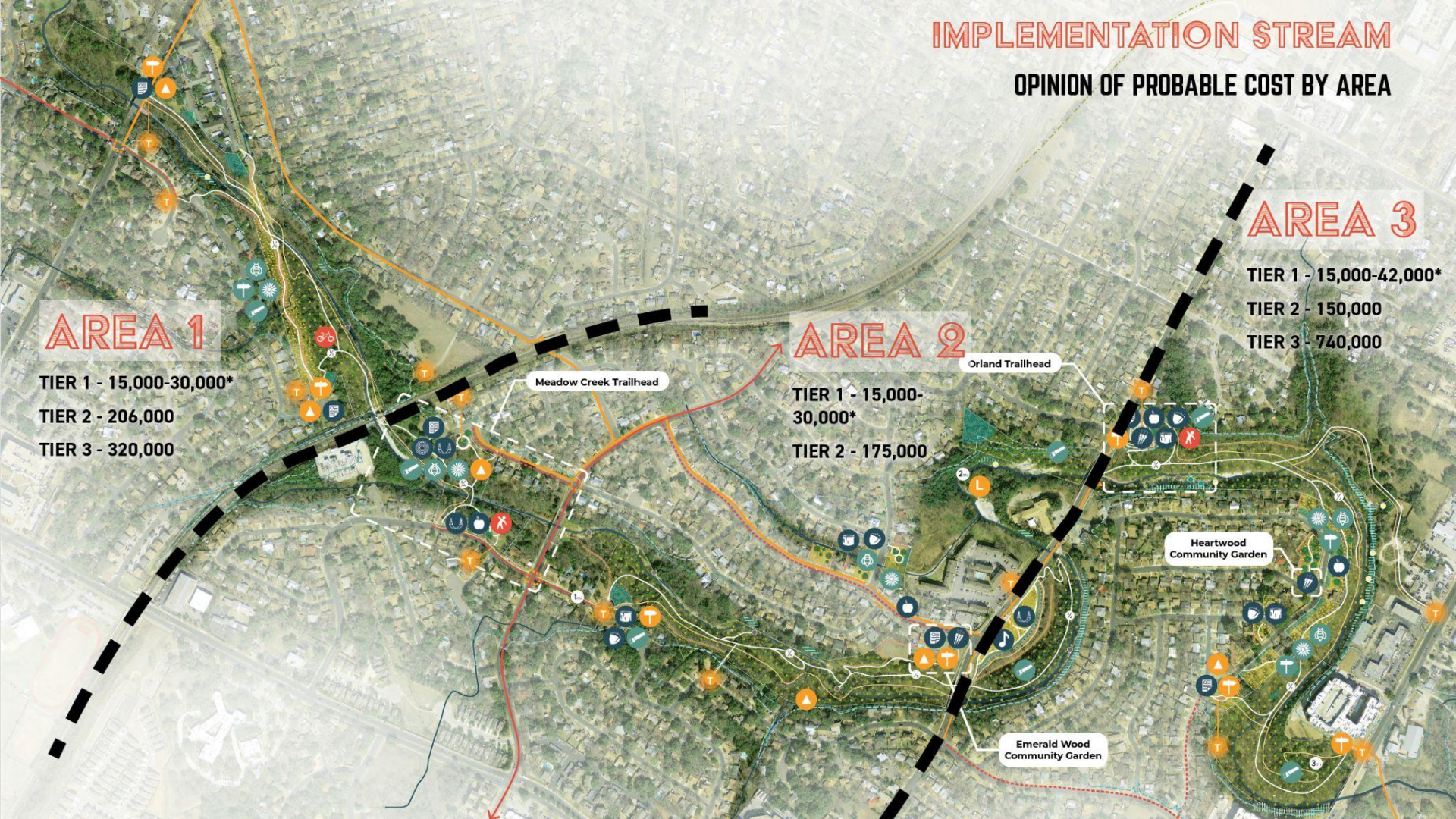
TIER 1 - 15,000-42,000\*

TIER 2 - 150,000

TIER 3 - 740,000

Heartwood Community Garden

Emerald Wood Community Garden





# SUSTAINABLE SITES AND CENTRAL WILLIAMSON CREEK GREENWAY

## Meets PreCertification, Targets Gold-Platinum for Implementation

### SITES v2 Scorecard Summary

YES	?	NO			
10	0	0	<b>1: SITE CONTEXT</b>	Possible Points: 13	
Y			CONTEXT P1.1	Limit development on farmland	2 to 3
Y			CONTEXT P1.2	Protect floodplain functions	2
Y			CONTEXT P1.3	Conserve aquatic ecosystems	2
Y			CONTEXT P1.4	Conserve habitats for threatened and endangered species	2
3			CONTEXT C1.5	Redevelop degraded sites	3 to 6
4			CONTEXT C1.6	Locate projects within existing developed areas	4
3			CONTEXT C1.7	Connect to multi-modal transit networks	2 to 3
3	0	0	<b>2: PRE-DESIGN ASSESSMENT + PLANNING</b>	Possible Points: 3	
Y			PRE-DESIGN P2.1	Use an integrative design process	3
Y			PRE-DESIGN P2.2	Conduct a pre-design site assessment	3
Y			PRE-DESIGN P2.3	Designate and communicate VSPs	3
3			PRE-DESIGN C2.4	Engage users and stakeholders	3
20	0	0	<b>3: SITE DESIGN - WATER</b>	Possible Points: 23	
Y			WATER P3.1	Manage precipitation on site	3 to 4
Y			WATER P3.2	Reduce water use for landscape irrigation	3 to 4
5			WATER C3.3	Manage precipitation beyond baseline	4 to 6
5			WATER C3.4	Reduce outdoor water use	4 to 6
5			WATER C3.5	Design functional stormwater features as amenities	4 to 5
5			WATER C3.6	Restore aquatic ecosystems	4 to 6
33	4	0	<b>4: SITE DESIGN - SOIL + VEGETATION</b>	Possible Points: 40	
Y			SOIL-VEG P4.1	Create and communicate a soil management plan	4
Y			SOIL-VEG P4.2	Control and manage invasive plants	4
Y			SOIL-VEG P4.3	Use appropriate plants	4
6			SOIL-VEG C4.4	Conserve healthy soils and appropriate vegetation	4 to 6
4			SOIL-VEG C4.5	Conserve special status vegetation	4
6			SOIL-VEG C4.6	Conserve and use native plants	3 to 6
6			SOIL-VEG C4.7	Conserve and restore native plant communities	4 to 6
6			SOIL-VEG C4.8	Optimize biomass	1 to 6
4			SOIL-VEG C4.9	Reduce urban heat island effects	4
1			SOIL-VEG C4.10	Use vegetation to minimize building energy use	1 to 4
0	4		SOIL-VEG C4.11	Reduce the risk of catastrophic wildfire	4
31	0	0	<b>5: SITE DESIGN - MATERIALS SELECTION</b>	Possible Points: 41	
Y			MATERIALS P5.1	Eliminate the use of wood from threatened tree species	2
4			MATERIALS C5.2	Maintain on-site structures and paving	2 to 4
4			MATERIALS C5.3	Design for adaptability and disassembly	3 to 4
4			MATERIALS C5.4	Use salvaged materials and plants	3 to 4
4			MATERIALS C5.5	Use recycled content materials	3 to 4
5			MATERIALS C5.6	Use regional materials	3 to 5
3			MATERIALS C5.7	Support responsible extraction of raw materials	1 to 5
3			MATERIALS C5.8	Support transparency and safer chemistry	1 to 5
3			MATERIALS C5.9	Support sustainability in materials manufacturing	5
3			MATERIALS C5.10	Support sustainability in plant production	1 to 5
25	4	0	<b>6: SITE DESIGN - HUMAN HEALTH + WELL-BEING</b>	Possible Points: 30	
3			HHWB C6.1	Protect and maintain cultural and historic places	2 to 3
2			HHWB C6.2	Provide optimum site accessibility, safety, and wayfinding	2
2			HHWB C6.3	Promote equitable site use	2
2			HHWB C6.4	Support mental restoration	2
2			HHWB C6.5	Support physical activity	2
2			HHWB C6.6	Support social connection	2
4			HHWB C6.7	Provide on-site food production	3 to 4
4			HHWB C6.8	Reduce light pollution	4
4			HHWB C6.9	Encourage fuel efficient and multi-modal transportation	4
1			HHWB C6.10	Minimize exposure to environmental tobacco smoke	1 to 2
3			HHWB C6.11	Support local economy	3
6	6	0	<b>7: CONSTRUCTION</b>	Possible Points: 17	
Y			CONSTRUCTION P7.1	Communicate and verify sustainable construction practices	3
Y			CONSTRUCTION P7.2	Control and retain construction pollutants	3
Y			CONSTRUCTION P7.3	Restore soils disturbed during construction	3
3			CONSTRUCTION C7.4	Restore soils disturbed by previous development	3 to 5
3			CONSTRUCTION C7.5	Direct construction and demolition materials from disposal	3 to 4
3			CONSTRUCTION C7.6	Divert reusable vegetation, rocks, and soil from disposal	3 to 4
3			CONSTRUCTION C7.7	Protect air quality during construction	2 to 4
0	9	0	<b>8. OPERATIONS + MAINTENANCE</b>	Possible Points: 22	
Y			O+M P8.1	Plan for sustainable site maintenance	2
Y			O+M P8.2	Provide for storage and collection of recyclables	2
0	5		O+M C8.3	Recycle organic matter	3 to 5
0	4		O+M C8.4	Minimize pesticide and fertilizer use	4 to 5
0			O+M C8.5	Reduce outdoor energy consumption	2 to 4
0			O+M C8.6	Use renewable sources for landscape electricity needs	3 to 4
0			O+M C8.7	Protect air quality during landscape maintenance	2 to 4
4	7	0	<b>9. EDUCATION + PERFORMANCE MONITORING</b>	Possible Points: 11	
4			EDUCATION C9.1	Promote sustainability awareness and education	3 to 4
3			EDUCATION C9.2	Develop and communicate a case study	3
4			EDUCATION C9.3	Plan to monitor and report site performance	4
3	0	0	<b>10. INNOVATION OR EXEMPLARY PERFORMANCE</b>	Bonus Points: 9	
3			INNOVATION C10.1	Innovation or exemplary performance	3 to 9
33	30	0	<b>TOTAL ESTIMATED POINTS</b>	Total Possible Points: 200	
				<b>SITES Certification Levels</b>	<b>Points</b>
YES				CERTIFIED	70
?				Project striving to achieve points, not 100% certified	
NO				Project is unable to achieve these credit points	
				<b>GOLD</b>	<b>100</b>
				<b>PLATINUM</b>	<b>135</b>

## Vision Plan Includes SITES Materials and Plants Criteria

### RECOMMENDED MATERIALS CRITERIA

Selecting sustainable and safe materials for construction along Williamson Creek will ensure the continued health of the creek and retain the environmental impacts of construction and development. Learn more about these strategies through the Sustainable Sites Initiative ([sustainable.sites.org](https://sustainable.sites.org)).

Recommendation	Intent	Strategy 1	Strategy 2	Strategy 3	More Resources
Use sustainable wood sources	Many commonly-used landscape wood products are sourced from threatened tree species or threatened ecosystems. Minimize impact on these species by purchasing sustainably-sourced wood from non-threatened tree species.	Review the Convention on International Trade in Endangered Species (CITES) website to review the status of tree species and ensure that is not threatened with extinction or listed as requiring trade controls to avoid utilization incompatible with their survival. <a href="https://www.cites.org/eng/resources/species.html">www.cites.org/eng/resources/species.html</a>	Review the International Union for Conservation of Nature's Red List of Endangered Species to ensure the species is not in danger of extinction. <a href="https://www.iucnredlist.org">www.iucnredlist.org</a>	Use recycled plastic, composite lumber, or another material instead of wood.	
Use salvaged materials and plants	Salvaging landscape materials from on-site or from re-use suppliers like a member of the Building Materials Reuse Association is an effective way to divert waste from landfills and conserve financial resources. Salvaged plant materials also conserve native, local plant genetic pools.	Identify salvaged materials suppliers or local demolition and construction projects. Search directories of reuse stores here: <a href="https://www.buildingmaterialsreuse.org">Building Materials Reuse Association, www.buildingmaterialsreuse.org</a>	Get in touch with a local native plant conservation group. Many of these groups "rescue" native plants from construction sites, and may be able to provide locally-sourced salvaged plants.	Green Building Research Council's searchable database. <a href="https://www.green-guild.com/exchange/search.html">www.green-guild.com/exchange/search.html</a>	Deuse Development Organization, <a href="https://www.deuse.org">www.deuse.org</a>
Use materials with a high recycled content	Use of new materials with a high recycled content reduces resource extraction and diverts materials away from landfills and production of new materials.	Speak with local materials suppliers about products that may help achieve this goal. Extraction of some materials include plastic lumber with recycled plastic, asphalt with recycled asphalt aggregate, and high recycled content steel.	Learn more about recycled products and industry materials recycling. The U.S. EPA Industrial Materials website <a href="https://www.epa.gov/industrialmaterials">www.epa.gov/industrialmaterials</a> The U.S. EPA's Comprehensive Procurement Guidelines <a href="https://www.epa.gov/cpg">www.epa.gov/cpg</a>	California Department of Resources and Recycling's Recycled Content Products Directory. <a href="https://www.cdrecycle.ca.gov/PCRD/full.asp">www.cdrecycle.ca.gov/PCRD/full.asp</a>	





## QUESTIONS + DISCUSSION

Photo Credit: Steve Prather

[centralwilliamsoncreek.org](http://centralwilliamsoncreek.org)



ADDITIONAL REFERENCE





Wayfinding  
Signage



Weather Warning  
Signage



Pollinator Nesting  
Boxes



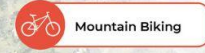
Wildflower Planting



Environmental  
Education Signage



Invasive Species  
Management



Mountain Biking



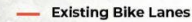
Community  
Message Boards



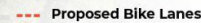
Trailhead



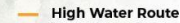
Proposed Nature Trail



Existing Bike Lanes



Proposed Bike Lanes



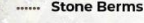
High Water Route



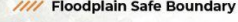
Mountain Biking Trail



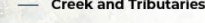
City Property



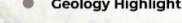
Stone Berms



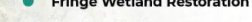
Floodplain Safe Boundary



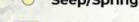
Creek and Tributaries



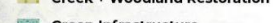
Geology Highlight



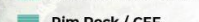
Fringe Wetland Restoration



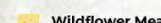
Seep/Spring



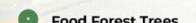
Creek + Woodland Restoration



Green Infrastructure



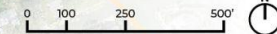
Rim Rock / CEF



Wildflower Meadow



Food Forest Trees



Note: Mapped locations are conceptual. Final locations must be approved by city property owners and meet City of Austin Environmental Code, including protection of tree critical root zones. Refer to the implementation section and appendices.

# MENCHACA TO UNION PACIFIC

ESTIMATED 100 YEAR FLOODPLAIN

ESTIMATED 25 YEAR FLOODPLAIN

Menchaca Rd

Lansing Dr

Union Pacific Railroad





Note: Mapped locations are conceptual. Final locations must be approved by city property owners and meet City of Austin Environmental Code, including protection of tree critical root zones. Refer to the implementation section and appendices.



## MEADOW CREEK TRAILHEAD

A group of contiguous floodplain buyout properties west of Emerald Forest Drive presents an opportunity for a major trailhead and community gathering space. Because these properties are within the floodplain, all site improvements must be low-impact and flood safe. Amenities shown here include a fitness lawn, hammock groves, and a labyrinth, providing spaces for neighbors to gather, relax, and stay healthy. Wildflower meadows, pollinator nesting boxes, and green infrastructure help to conserve and improve the creek environment. Other programming ideas include invasive species management, public art, and expansion of existing seating areas.



Note: Mapped locations are conceptual. Final locations must be approved by city property owners and meet City of Austin Environmental Code, including protection of tree critical root zones. Refer to the implementation section and appendices.



# SOUTH 1ST TO SOUTH CONGRESS

- Trailhead
- Proposed Nature Trail
- Existing Bike Lanes
- Proposed Bike Lanes
- High Water Route
- Mountain Biking Trail
- City Property
- Stone Berms
- Floodplain Safe Boundary
- Creek and Tributaries
- Geology Highlight
- Fringe Wetland Restoration
- Seep/Spring
- Creek + Woodland Restoration
- Green Infrastructure
- Rim Rock / CEF
- Wildflower Meadow
- Food Forest Trees

- Food Forest
- Community Garden
- BYO Hammock Grove
- Music Grove
- Fitness Programming
- Nature Play Area
- Community Message Boards
- Outdoor Classroom
- Invasive Species Management
- Environmental Education Signage
- Wildflower Planting
- Pollinator Nesting Boxes

- Wayfinding Signage
- Land Acquisition
- Weather Warning Signage

## Orland Trailhead

Heartwood Dr

Heartwood Food Forest (In Progress)

Heartwood Community Garden (Existing)

Woodbine Dr



South Congress Ave

Note: Mapped locations are conceptual. Final locations must be approved by city property owners and meet City of Austin Environmental Code, including protection of tree critical root zones. Refer to the implementation section and appendices.





## ORLAND STREET TRAILHEAD

A PARD-owned site at the intersection of South 1st and Orland streets presents opportunities for creek access and amenities. This property includes outside the floodplain, meaning it can accommodate a wider variety of programming and site improvements. This flexibility allows the site to serve as a potential hub for activities such as community gardening, environmental education, nature play, and invasive species management. The site also features a steep descent into the floodplain. A boardwalk or other more extensive site improvements may be necessary to ensure creek access and connectivity.

Note: Mapped locations are conceptual. Final locations must be approved by city property owners and meet City of Austin Environmental Code, including protection of tree critical root zones. Refer to the implementation section and appendices.



# BILINGUAL CREEK IDEA CARDS EXAMPLE

## English | Ingles



### INVASIVE SPECIES MANAGEMENT

Removal of invasive species, either by volunteers or professionals. Methods may include hand-pulling plants, herbicide application, or cutting down woody vegetation.



Net Environmental Impact

Enhances Habitat

Enhances Water Quality

Reduces Heat Island Effect

Reduces Erosion

Honors Community Identity

Opportunities for Social Connections

Accessibility

Size

Phasing

1 2 3

\$\$\$ \$

People icons

Waves icon

Heart icon

Hard hat icon

Pairs well with...

CLEAN-UP DAYS

WILDFLOWER PLANTING

CREEK RESTORATION

Considerations

- Consult with ecological restoration experts to determine plan of removal to minimize herbicide usage and erosion potential.

## Spanish | Español



### Manejo de Especies Invasivas

Remoción de especies invasivas por voluntarios o profesionales. Algunos de los métodos incluyen remoción manual, aplicación de herbicidas, o cortando vegetación leñosa.



Impacto Ambiental Neto

¿Mejora el hábitat?

¿Mejora la Calidad del Agua?

¿Reduce el efecto de "isla de calor"?

¿Reduce la Erosión?

¿Honra la Identidad de la Comunidad?

¿Ofrece Oportunidades para Interacciones Sociales?

¿Accesibilidad?

Tamaño

Fase Recomendada

1 2 3

\$\$\$ \$

People icons

Waves icon

Heart icon

Hard hat icon

Va Bien Con...

Días de Limpieza

Siembra de Plantas Silvestres

Restauración de Arroyo

Consideraciones

- Consultar con expertos de restauración ecológica para establecer un plan de remoción que minimice el uso de herbicidas y potencial de erosión.



### CREEK RESTORATION

Work done to improve the environmental health of Williamson Creek in support of biodiversity, recreation, flood management, and habitat.



Net Environmental Impact

Enhances Habitat

Enhances Water Quality

Reduces Heat Island Effect

Reduces Erosion

Honors Community Identity

Opportunities for Social Connections

Accessibility

Size

Phasing

1 2 3

\$\$\$ \$

People icons

Waves icon

Heart icon

Hard hat icon

Pairs well with...

CLEAN-UP DAYS

INVASIVE SPECIES MANAGEMENT

WILDFLOWER PLANTING

Considerations

- Consult with ecological restoration experts to determine plan for restoration.

"EROSION HAS MADE FENCING FALL DOWN"



### Restauración del Arroyo

Trabajo para mejorar la salud ambiental del Arroyo Williamson para proteger la biodiversidad, recreación, manejo de inundaciones, y hábitats que se encuentran a lo largo del mismo.



Impacto Ambiental Neto

¿Mejora el hábitat?

¿Mejora la Calidad del Agua?

¿Reduce el efecto de "isla de calor"?

¿Reduce la Erosión?

¿Honra la Identidad de la Comunidad?

¿Ofrece Oportunidades para Interacciones Sociales?

¿Accesibilidad?

Tamaño

Fase Recomendada

1 2 3

\$\$\$ \$

People icons

Waves icon

Heart icon

Hard hat icon

Va Bien Con...

Días de Limpieza

Manejo de Especies Invasivas

Siembra de Plantas Silvestres

Consideraciones

- Consultar con expertos de restauración ecológica para establecer un plan de restauración.

"La erosión ha causado que cercas se caigan"

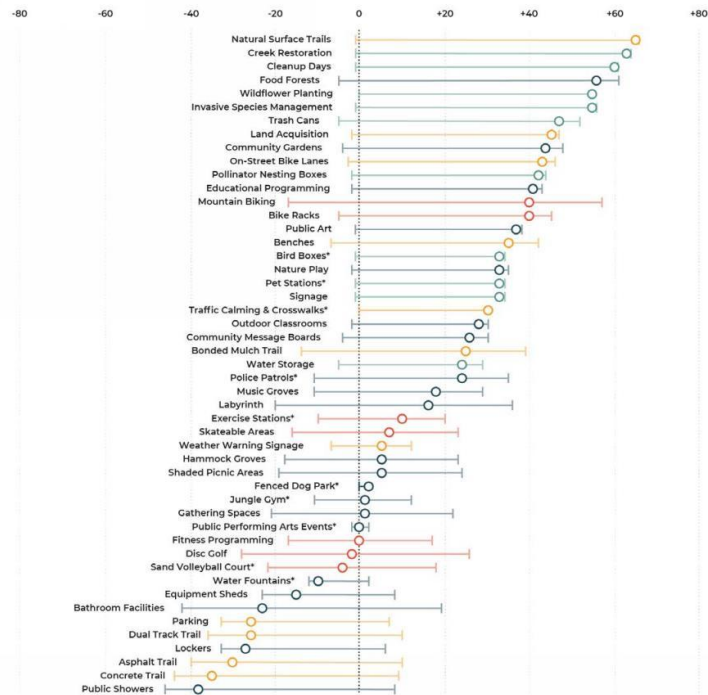


# SCORING AND APPLICATION OF CREEK IDEA CARDS

## Idea Card Scores

Once the voting period on Social Pinpoint closed, the results were tabulated and summarized. This graphic shows the net score each creek idea card received. Idea

cards received one point when they received a "thumbs up" and one negative point when they received a "thumbs down." The sum of these points produced the net score.



\* Indicates ideas added by community members via Social Pinpoint during feedback period

## Vision Plan- Placement of Creek Idea Cards

After the voting period on Social Pinpoint closed, the idea cards were then placed along the Greenway using information gathered from existing conditions, conversations with the working group, and the initial Social Pinpoint Greenway Mapping Exercise. A conceptual design for the entire greenway, as well as two trailheads at South 1st and Orland streets and Meadow Creek Drive were available for comment until January 18th, 2021.



Comment on the Central Williamson Creek Greenway Vision Plan in the forum below!

- You can download the document from the Site Design section above.
1. Are there any ideas you would like to see at locations we don't currently have shown?
  2. Are there any ideas you see that should be removed from their locations because they are not ideal for that location?
  3. What do we not have enough of?
  4. What do we have too much of?
  5. Are there any other community-led ideas that should be added?
  6. What are we missing?
  7. Do you see anything that doesn't work?