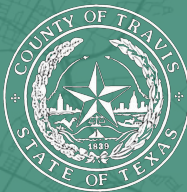


JOINT SUBCOMMITTEE RESILIENCE HUBS

SEPTEMBER 24, 2021



AGENDA

- I. Council Resolution and Resilience Hub Overview
- II. Austin ISD Partnership
- III. Working Together



COUNCIL RESOLUTION 20210408-028

PLAN:

- Conduct an **assessment** to identify potential locations for resilience hubs.
- Explore "**passive survivability**", redundant power and water.
- **Engagement with each community**, center the needs of the most vulnerable and affected community members.
- Potential resilience hubs are based on **15-minute walkshed** of each neighborhood.

DELIVERABLE:

- **Budget** sufficient to fund recommendations and strategies to design and equip hubs.
- Plan, budget recommendations, funding strategies, and a timeline for designing and equipping an initial **six pilot hubs for disasters**.
- **Intergovernmental memorandum** necessary to memorialize community partnerships necessary to create resilience hubs."



WHY RESILIENCE HUBS?



Disasters

- Extreme Weather Events
- Power and Water Outages
- Health & Safety emergencies

Events Highlight Need For

- Accessible community spaces
- Distribution centers (water, food, medicine, etc.)
- Back-up power & water
- Sheltering during events
- Truly engaging community

Equity Focus

- Empower low-income communities and communities of color in the planning process
- Build an equity lens for all staff participating in the process
- Move as much as possible towards community leadership and ownership of the work



WHAT ARE RESILIENCE HUBS?

What they are:

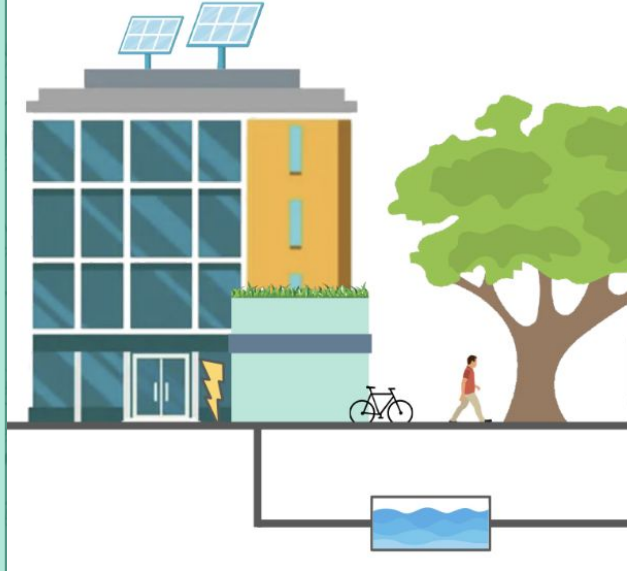
- Networks of Physical Facilities
- Community Focused

What they are not:

- Replacement for traditional emergency planning and disaster response
- Replacement for sheltering plan

Day to Day v. Emergency

- 98% of the time, function to serve the community
- 2% of the time, activated with resilient systems



STAKEHOLDERS:

- City and County
- Community Organizations
- Faith-based Groups
- Schools & Higher Ed
- Utility Providers
- Housing Authority
- Online Networks
- Local Businesses
- Chambers of Commerce
- Etc.

TOPICS & STAKEHOLDERS



POTENTIAL FACILITY SOLUTIONS

- Solar PV Installation
- Battery Energy Storage
- Backup Generators, large or small
- Electric Vehicle Charging
- WiFi & Backup Communications
- Backup Potable & Non-potable Water
- Dry Storage for water and supplies

- Refrigerated Storage
- Commercial Kitchen
- Passive Survivability Design
- MERV-13 Air Filtration and other IAQ measures
- Outdoor staging areas, shaded areas, and utility hookups for mobile disaster response
- Indoor staging areas, large conditioned space



THE NETWORK

RANGE OF FACILITIES

**BASIC
GATHERING
HUB**

**BASIC +
BACKUP
POWER
HUB**

**GRID-
INDEPENDENT
HUB**



CITYWIDE NETWORK

~400 facilities would be needed to serve the entire city (272 square miles, 15 minute walk-shed)

Range of Facilities Activated:

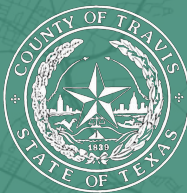
- City
- County
- School Districts
- Community College / Universities
- Health Clinics
- Faith Based Facilities

Range of Functionality:

- Range of neighborhood typology
- Range of community needs
- Range of size
- Range of facility attributes
- High need for collaboration



AUSTIN ISD PARTNERSHIP



EXISTING ROLE IN EMERGENCY RESPONSE

- Schools are a trusted part of the Community
- During extreme events, the community gravitates towards schools
- Schools have functioned as community hubs and shelters during past events



LESSONS LEARNED

- Logistics
 - Infrastructure, Distribution and Storage
- Communication Network
 - External and Internal
- Flexibility in Crisis
- Purchasing Power
 - Food and Water



AI SD EQUITY BY DESIGN



SVI IN AISD

The district contains some of the state's most vulnerable neighborhoods, and some of the least vulnerable ones.

There are **12 census tracts** in the district categorized as **very high vulnerability within the state**.

SVI = Social Vulnerability Index



SVI State Category

SVI: State Category

Very Low

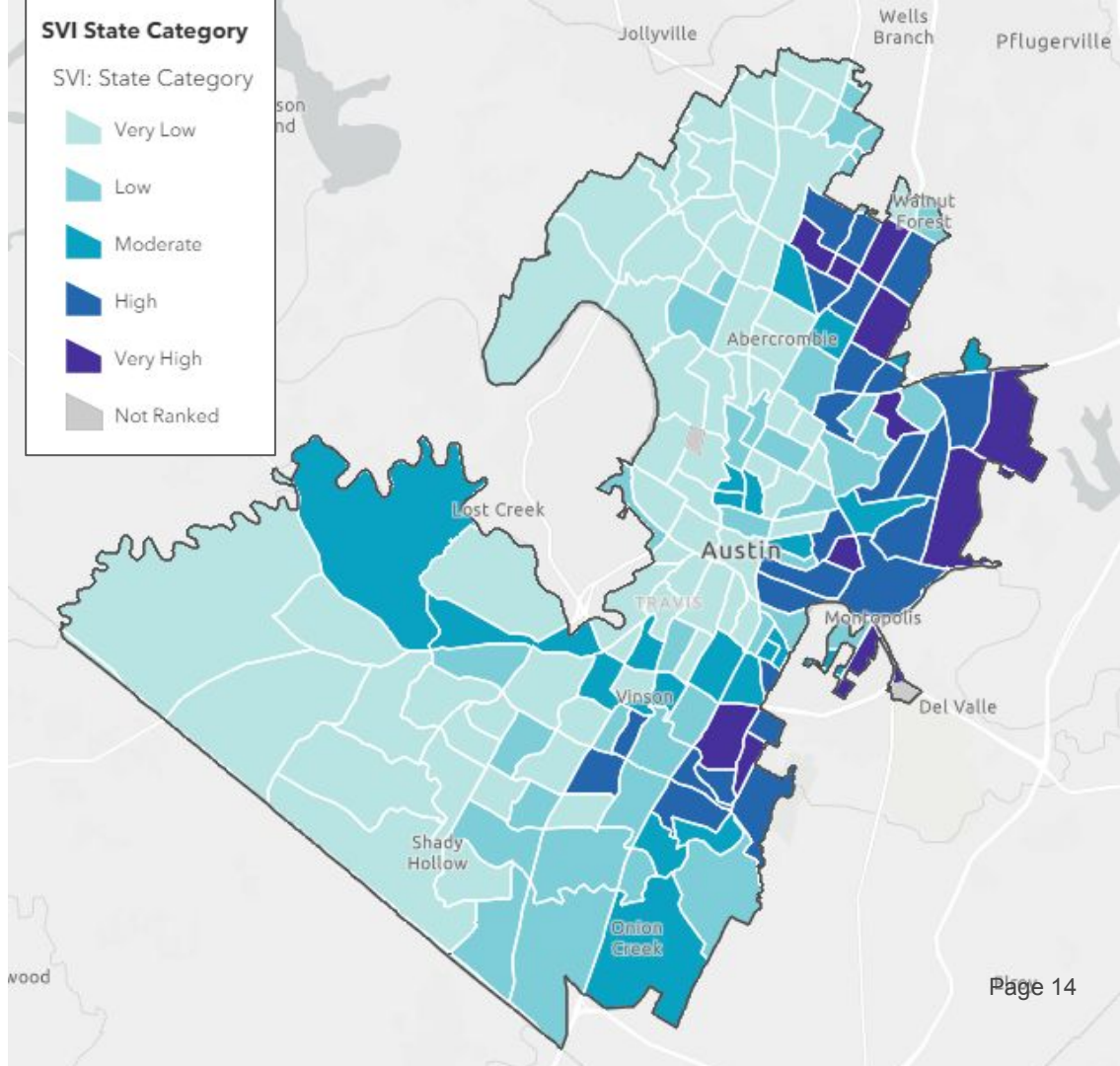
Low

Moderate

High

Very High

Not Ranked



AISD LONG-RANGE PLANNING

LONG-RANGE PLANNING COMMITTEES:

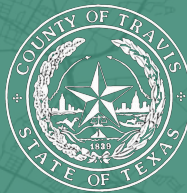
- Academics & Career and Technical Education
- Athletics
- Visual & Performing Arts
- Facilities
- **SAFETY, SECURITY & RESILIENCY**
- Transportation, Food Service & Maintenance
- Technology

Committee members include 13 community members, 2 students and 6 AISD staff.

TIMELINE



WORKING TOGETHER



THE APPROACH

Identify Existing Assets and Facilities

- Mapping
- Identify gaps to create hub and spoke network

Identify & Prioritize Sites for Potential New Investments

- AISD + COA collaboration
- Methodology of SVI, equity, transparency
- Consider range of 3 types of Hubs

Conduct Stakeholder Engagement to Inform the Process

Once Initial Sites are Selected, Conduct Community Engagement

Identify Additional Resources Needed to Fill in the Hub and Spoke Network



AMERICAN RESCUE PLAN FUNDING

- \$3M allocated to Resilience Hubs by the Council-approved American Rescue Plan (ARP) funding framework
- We plan to share resources across a network of hubs for project planning and capital investments
- The funds need to be spent by December 31, 2024





CLOSING

NEXT STEPS

- **Map and explore Hub and Spoke network**
- **Continue and expand partner collaboration**
- **AI SD Bond Process**
- **Report back to this Joint Subcommittee**



Thank you!

