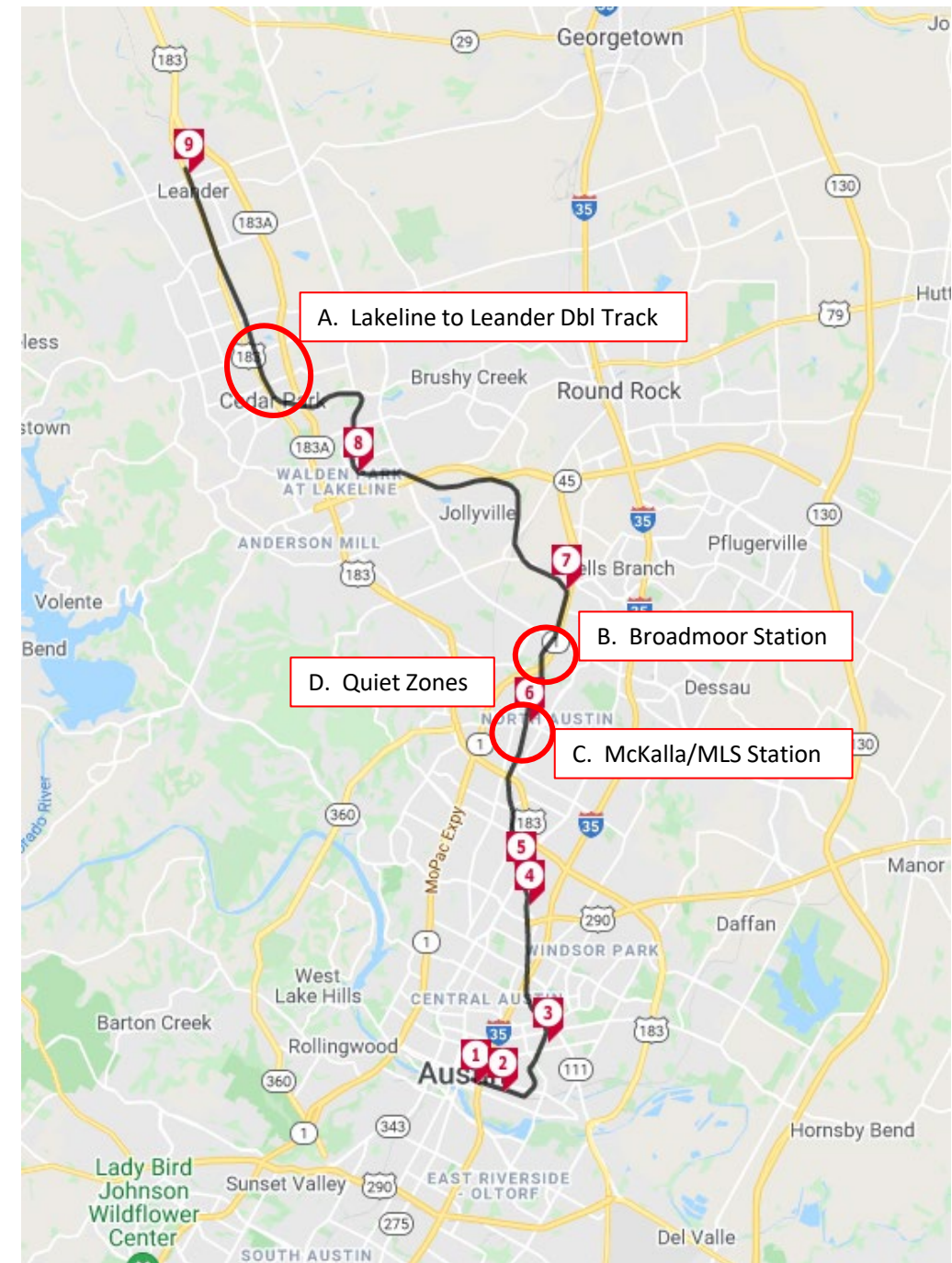


Agenda

Programmed Improvements

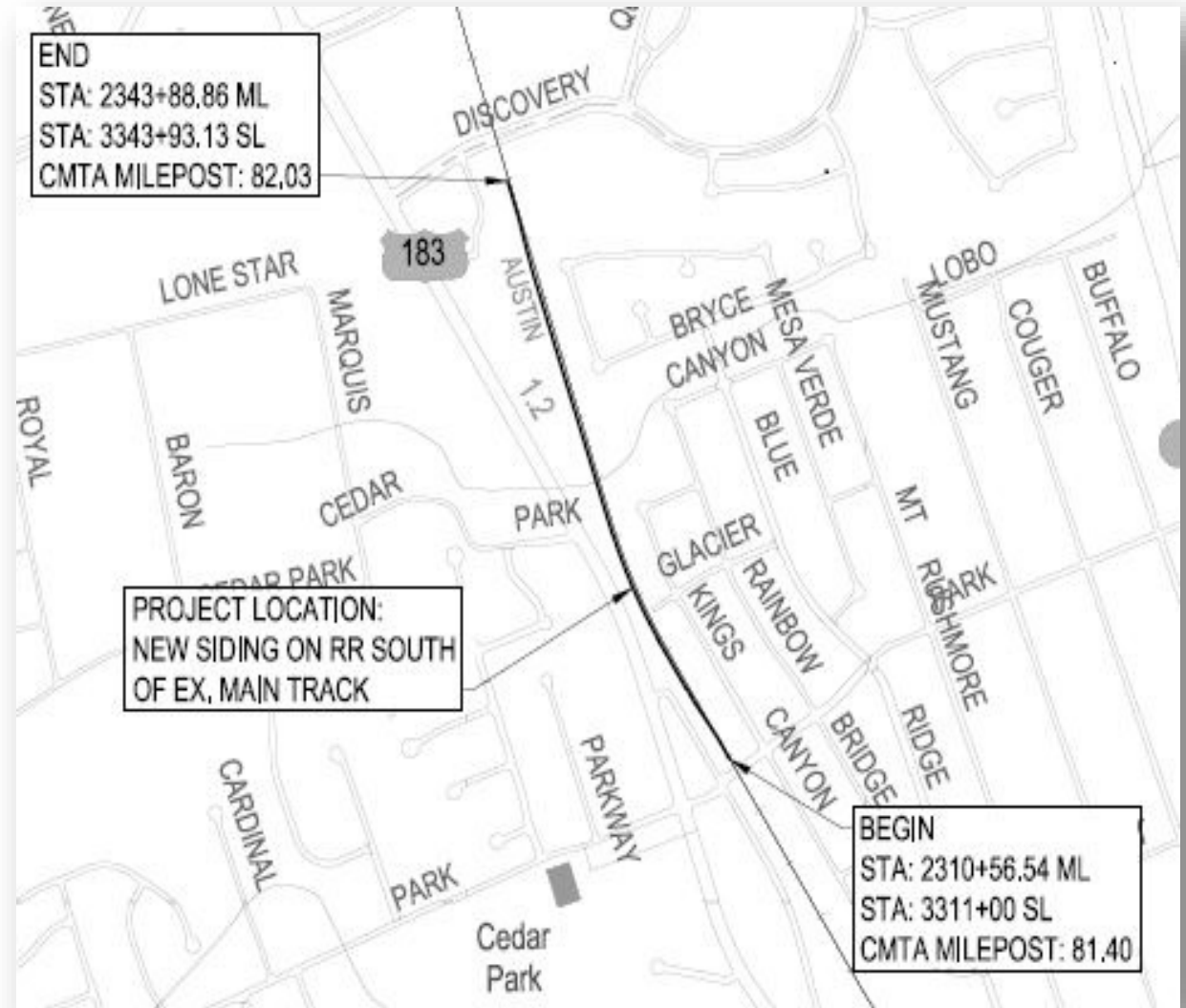
- Lakeline to Leander Double Track
- Broadmoor MetroRail Station
- McKalla/MLS MetroRail Station
- Quiet Zones



Lakeline to Leander Double Track Project

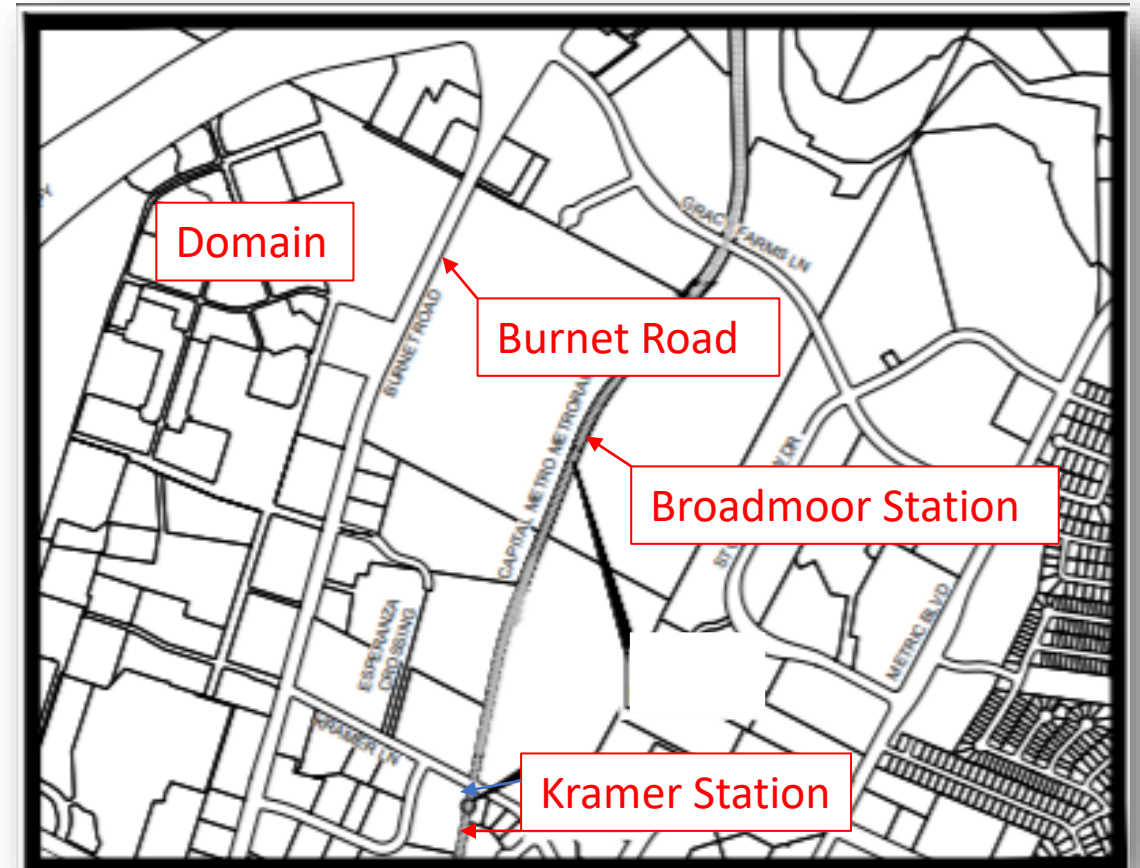
Park Street to Discovery Blvd

- Currently, there is a single main track between the Lakeline and Leander Stations
- New 3350 LF double track to establish a zone for passing trains
 - Turnouts
 - Replace railroad bridge
 - Retaining Walls
 - Minor utility work
- Provides improved service frequency and reliability; continuous improvement of the customer experience
- Construction October 2021 through Fall 2022

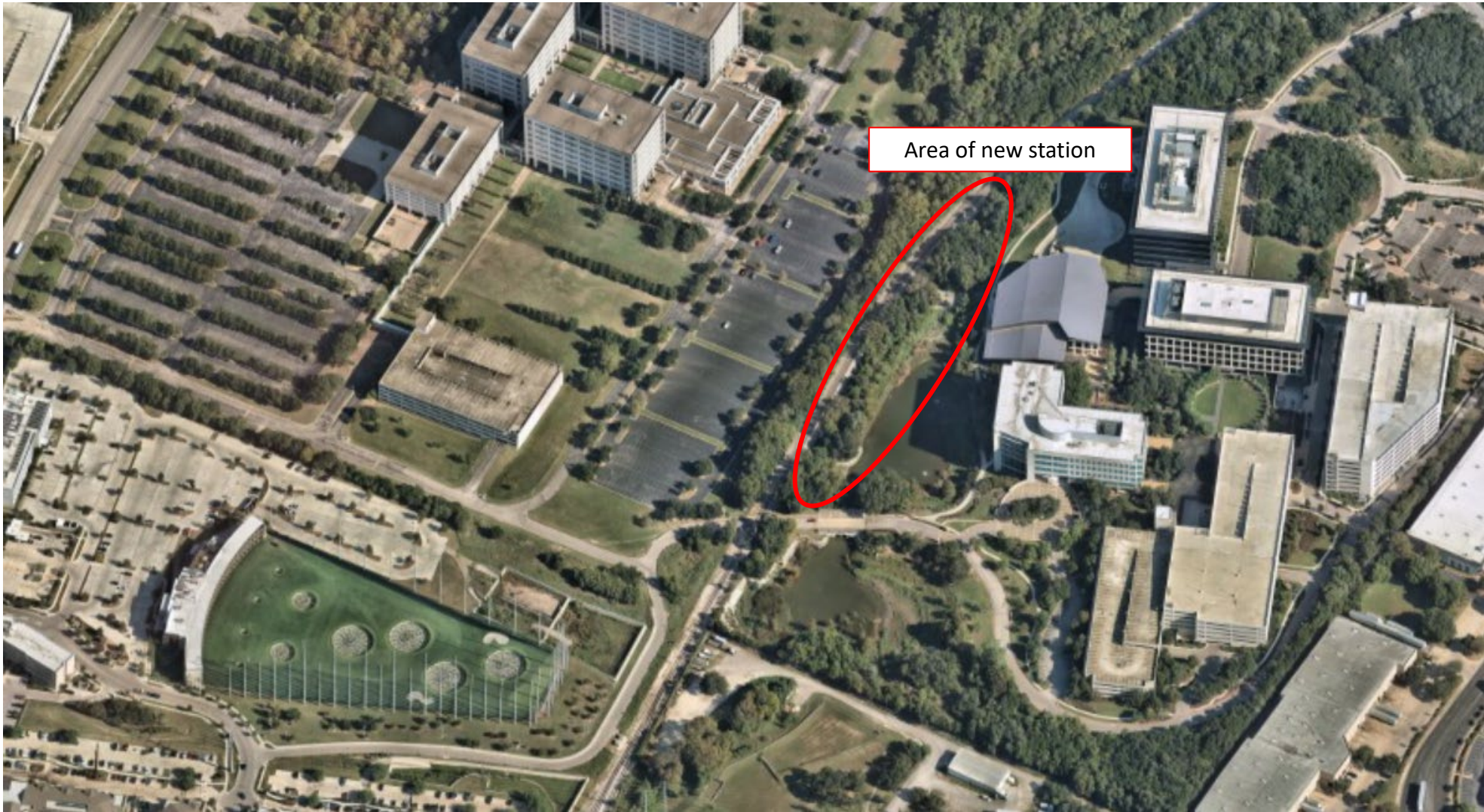


Broadmoor MetroRail Station-Overview

- New multi-modal transit hub
- Adjacent to the Domain on N. Burnet Road
- Half mile north of the existing Kramer station
- One mile north of the new Austin FC Q2 Stadium
- Direct connectivity to the 803, and 466



Broadmoor MetroRail Station



Looking north towards new Broadmoor Station



Broadmoor MetroRail Station-Amenities

- Rail station with two double length, covered platforms
- Over ½ mile of new double track as part of the new station
- More than 400 shared parking spaces for transit users
- Abundant pedestrian and bike friendly pathways
- Safety and security enhancements



Rail Station at Night

Artist conceptual rendering



Broadmoor P3 Development - Benefits

- Increases MetroRail Red Line station annual boardings
- Provides a multi-modal transit connection in North Austin (Austin's second downtown)
- Connected to a high-density, mixed-use development with a safe and walkable street grid
- Leverages private investment for a public project
- Supports the *Imagine Austin* vision of a more compact and connected city



Platform Looking North

Artist conceptual rendering



McKalla/MLS MetroRail Station

Based on Preliminary (30%) Designs

Project includes:

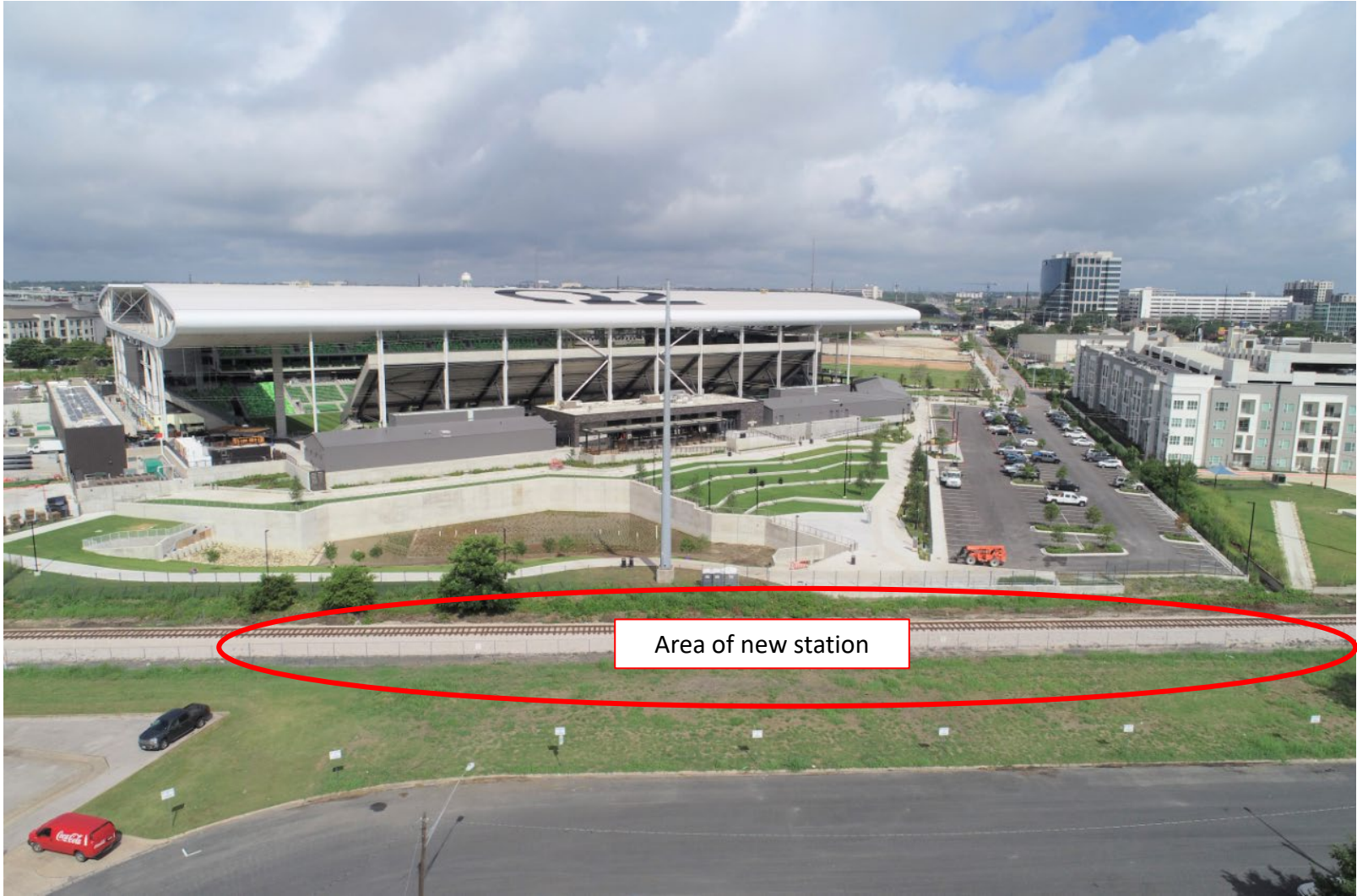
- New passenger rail station
- Customer amenities
- Site specific canopy designs
- Crowd control & safety provisions
- Double tracking
- Drainage improvements
- Train signals & control systems
- Modifications to grade crossings
- Sidewalks (limited)
- Sustainability Features

Coming Summer 2023



McKalla/MLS MetroRail Station

Based on Preliminary (30%) Designs



Area of new station

Looking west towards new Q2 Stadium



McKalla/MLS MetroRail Station

Based on Preliminary (30%) Designs



Artist's conceptual rendering



Quiet Zones

- Work with our partners in the city and the FRA to design and implement additional quiet zone crossings.
- We will conduct a diagnostic review to determine the requirements to convert four additional crossings into quiet zones.
- During normal operating conditions, CapMetro will be able to cross these intersections without sounding the train horn.
- Design and construct the necessary protection and safety devices at:
 - Rundberg Lane
 - Rutland Drive
 - Braker Lane
 - Kramer Lane





QUESTIONS?



Thanks for joining us.
Visit ProjectConnect.com for more information.

