



Project Connect Update

Blue Line Bridge

December 2021



Project Components

PROJECT CONNECT – PROGRAM COMPONENTS

Orange Line – NLTC to Stassney Phase 1 (LRT), Enhanced MetroRapid

Blue Line – Riverside Corridor (LRT)

Gold Line – MetroRapid, NEPA completion for LRT

Downtown Tunnel (Orange, Blue Lines)

MetroRapid – Expo, Pleasant Valley, Burnet to Menchaca/Oak Hill

Green Line to Colony Park – NEPA, Final Design, Construction

Red Line Improvements

MetroExpress, Park & Rides, Transit Centers (3 New Routes, 9 P&R, 1 TC)

Neighborhood Circulators (15 New Zones / Vehicles)

Maintenance Facility Improvements

Customer Technology Systems

Anti-Displacement Investments

LEGEND

LIGHT RAIL

- Orange Line
- Potential Future Extension
- Blue Line

METRO RAIL

- Red Line
- Green Line
- Potential Future Extension

METRO RAPID

- Gold Line
- Enhanced MetroRapid Route
- Potential Future Extension

METROBUS

- Current Frequent Local Routes

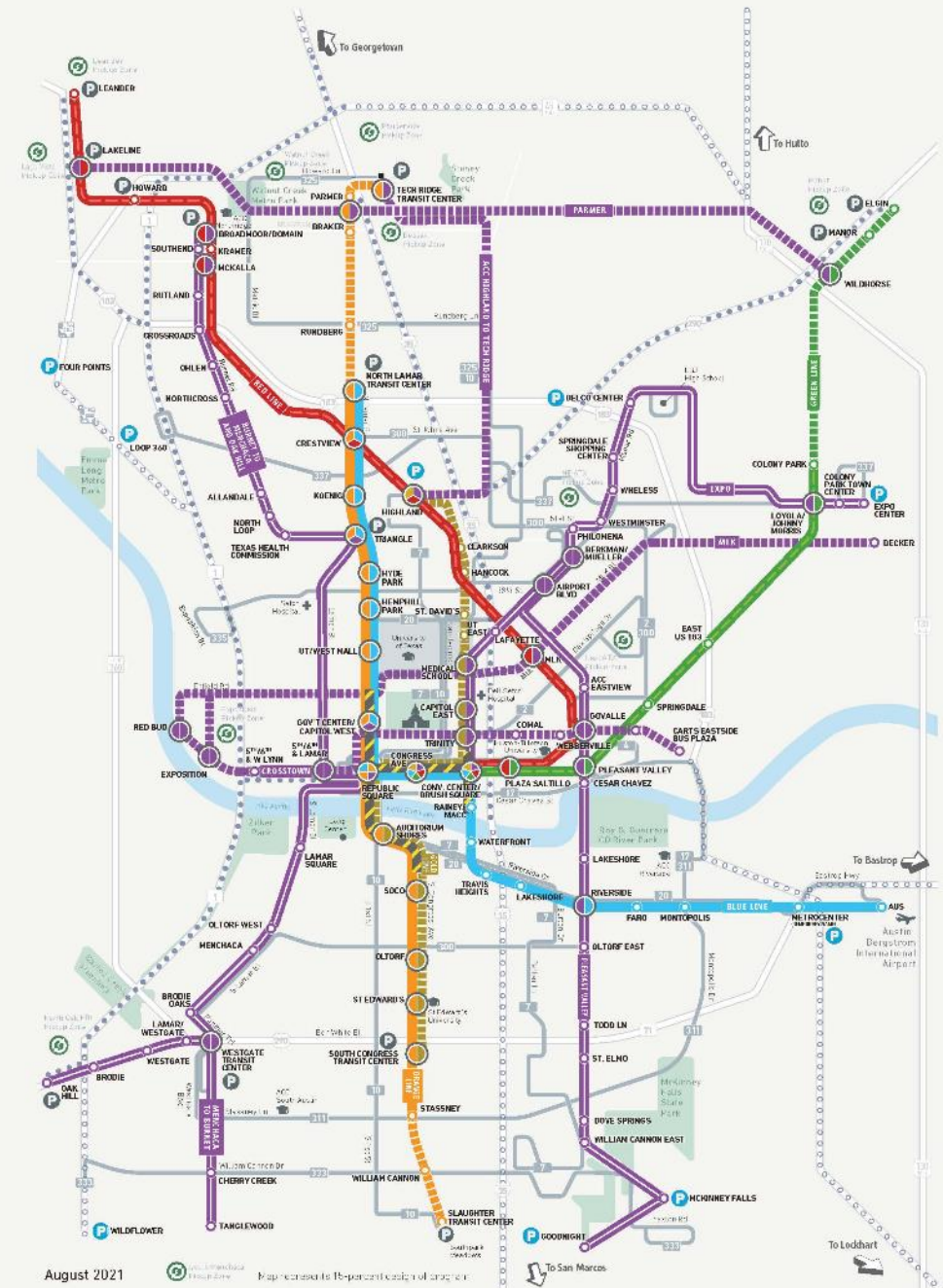
METROEXPRESS

- Current MetroExpress
- Future MetroExpress

ADDITIONAL AVAILABLE SERVICES

- MetroAccess
- MetroBike
- CURRENT PARK & RIDE
- PROPOSED PARK & RIDE
- CIRCULATOR
- TUNNEL

SCHEMATIC MAP
NOT TO SCALE



INTEGRATED PROGRAM DELIVERY PARTNERSHIP



Orange Line
Blue Line
Tunnel
Green Line – Phase 1
Facilities



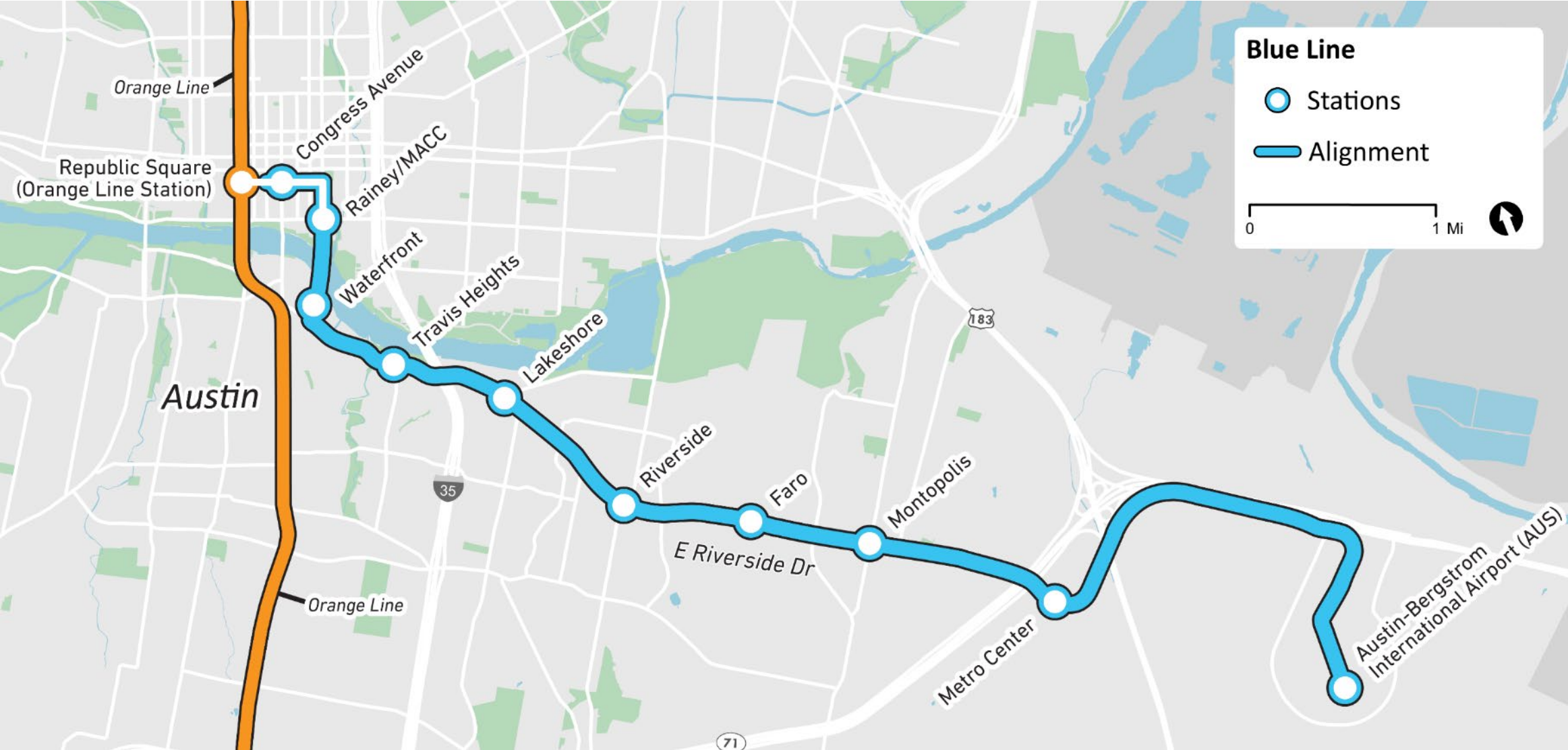
MetroRapid
MetroExpress
Neighborhood Circulators
Customer Tech
Red Line – Phase 1



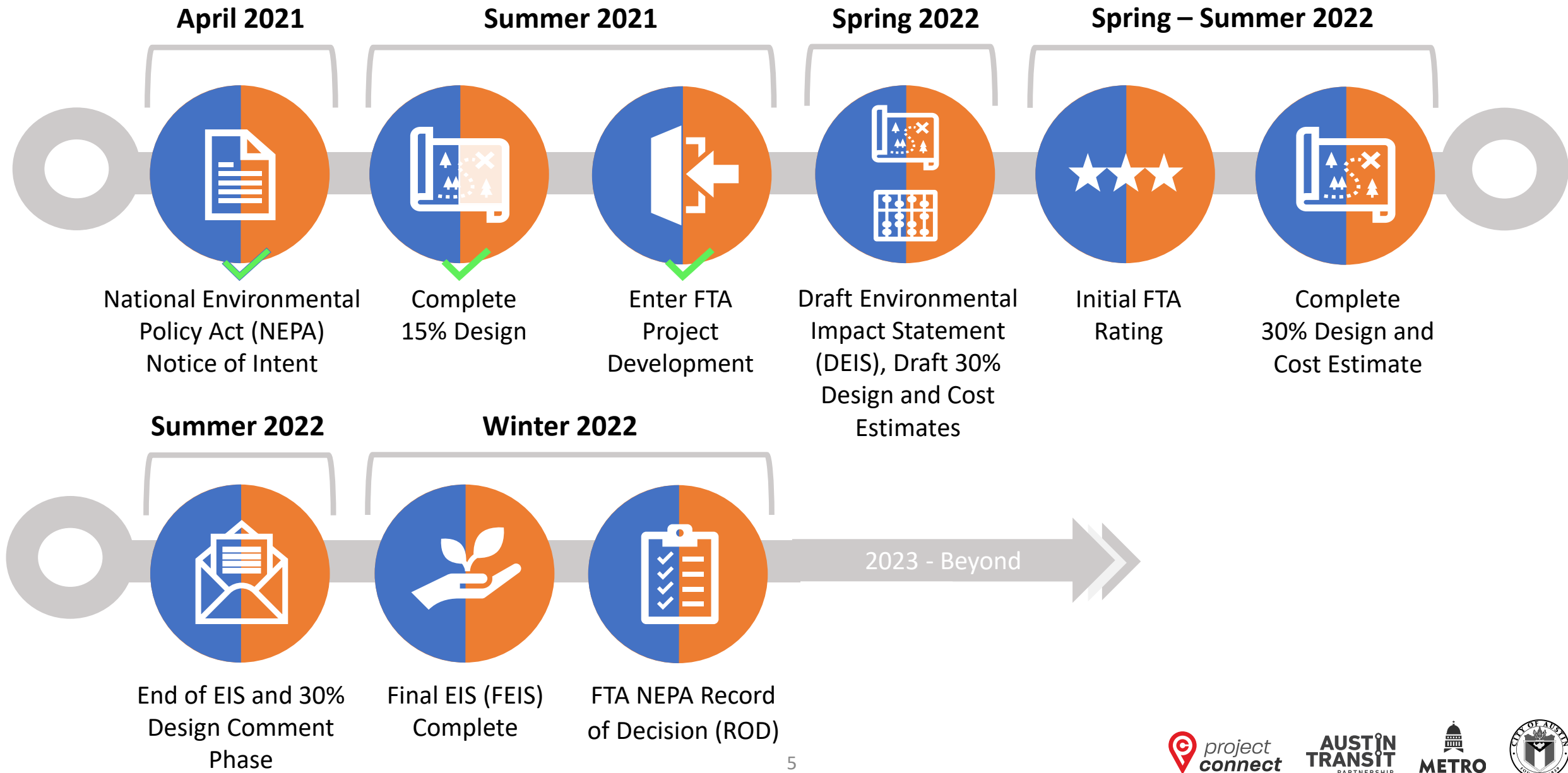
Permitting
Right of Way Coordination
Utility Design and Coordination
Active Transportation
and Traffic Coordination
Anti-Displacement
Investments

Blue Line – Corridor Overview

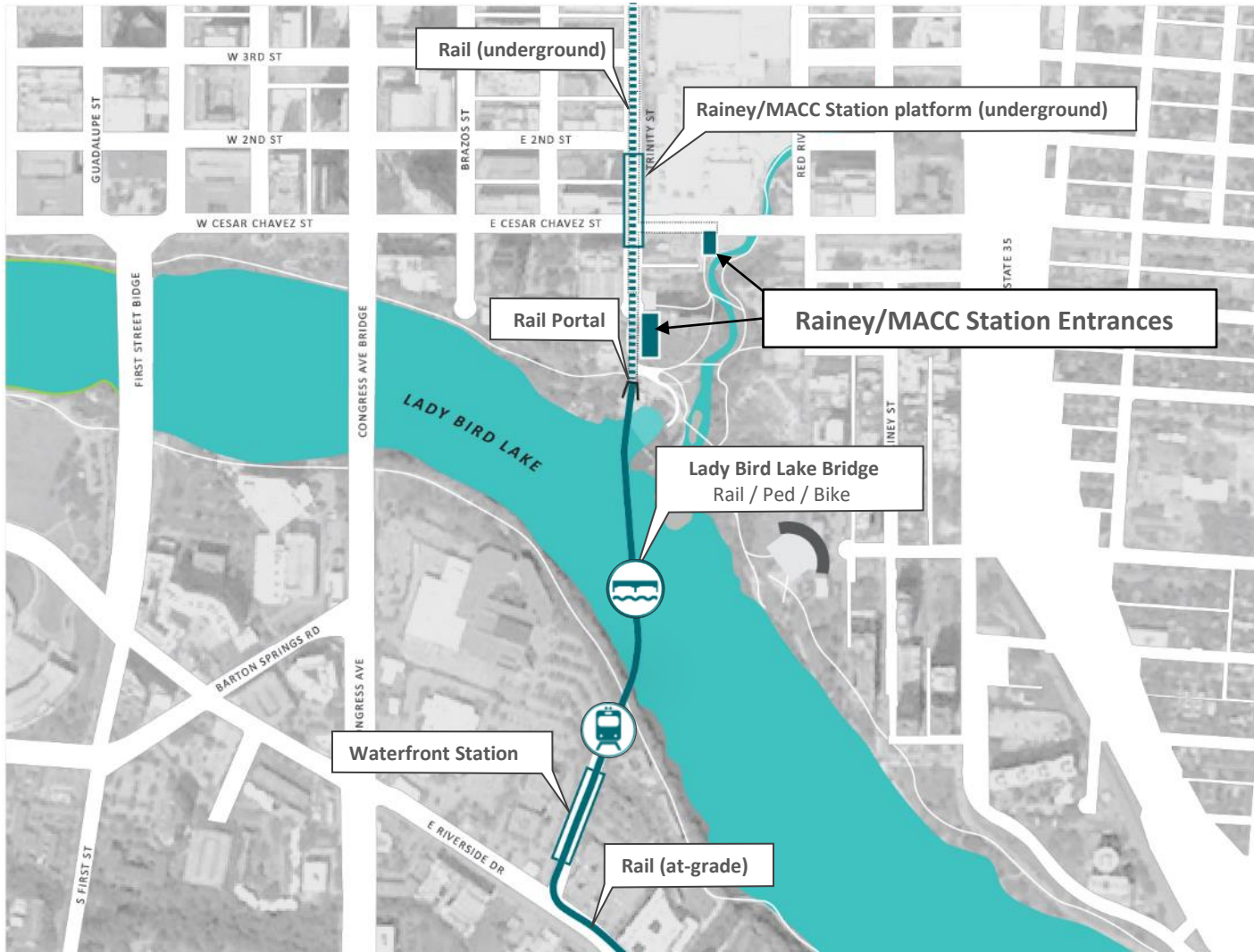
Note: Station locations and names subject to change



ORANGE & BLUE LINE – KEY MILESTONES (2021 – 2022)



Blue Line Bridge



Key Rail Connections:

- South Shore: Above-ground station (“Waterfront”)
- North Shore: underground station (“Rainey/MACC”)

Bridge modes:

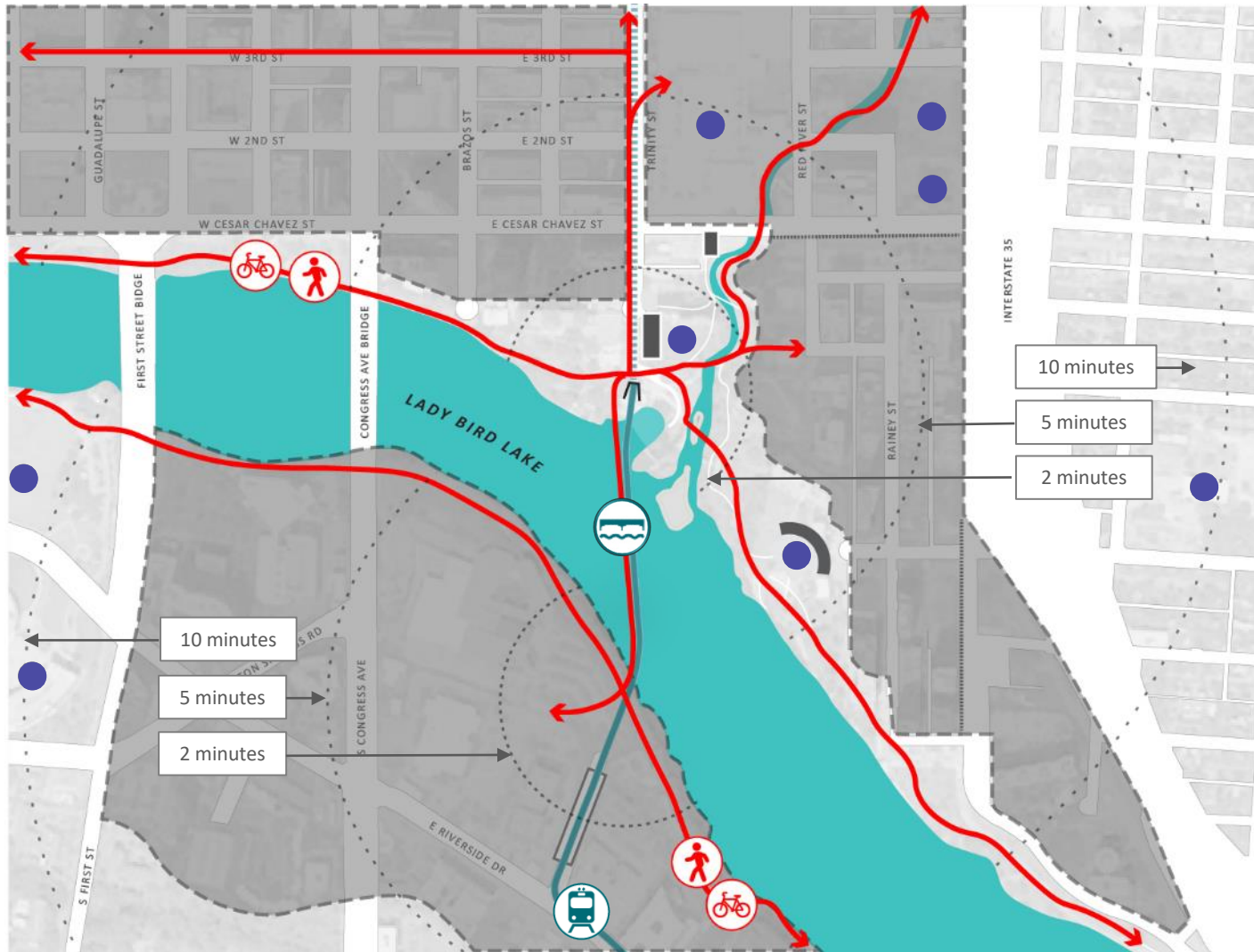
1. Light rail (Blue Line) – electric vehicles
2. Cyclists
3. Pedestrians

Other considerations:

- Connections to Butler Hike and Bike Trail and Waterloo Greenway
- Waller Creek Tunnel outfall structure
- Waller Creek Boathouse impacts



Blue Line Bridge: Connections



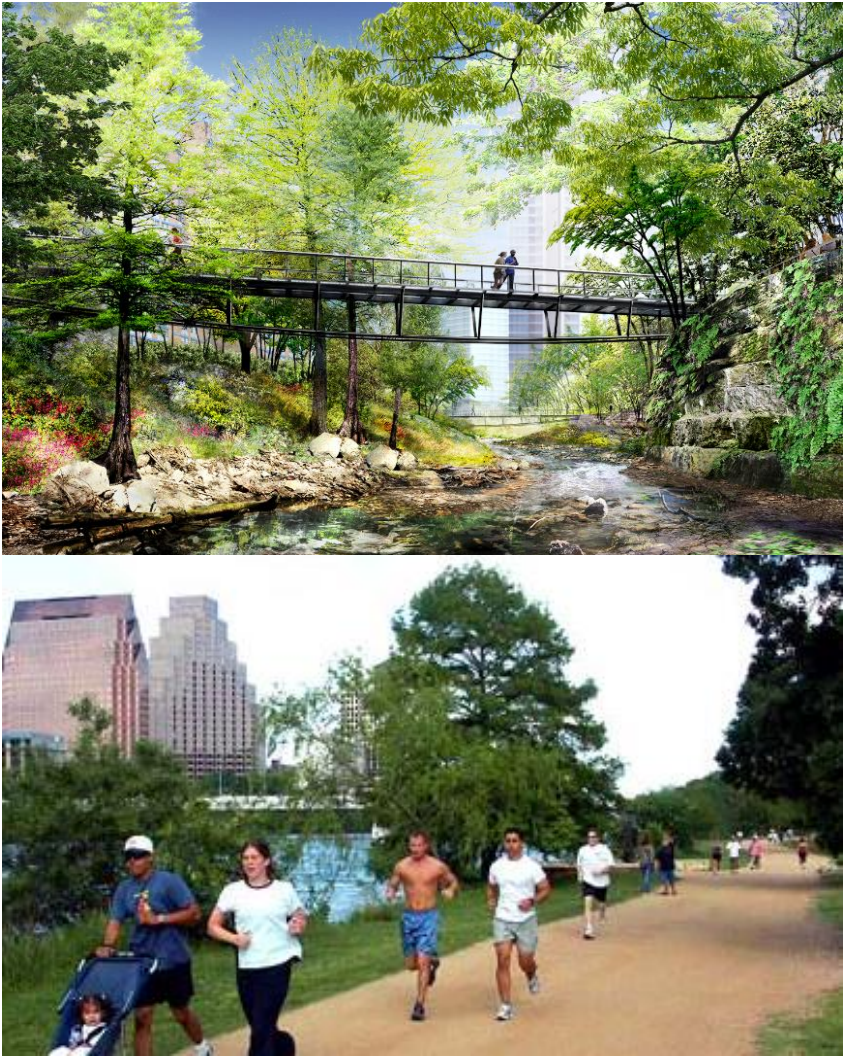
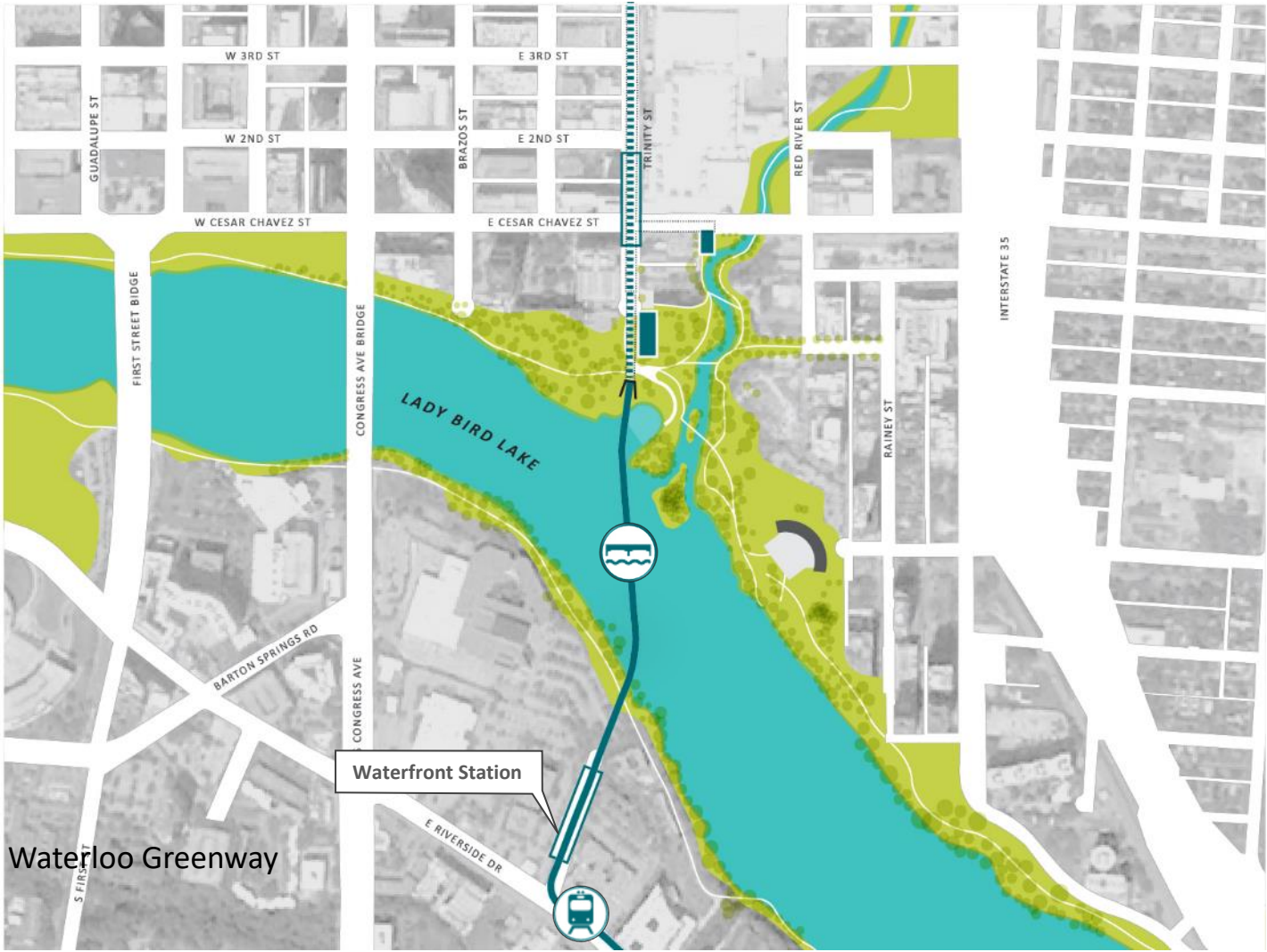
Pedestrian Connections

Walking time across the bridge: **<5 minutes**

- Within 2 minutes walking distance from bridge:
 - Rainey/MACC & Waterfront Station Entrances
 - South Central Waterfront
 - Waterloo Greenway Trails
 - Butler Hike/Bike Trail
- Within 5 minutes walking distance from bridge:
 - ESB-MACC
 - Rainey Street District
 - Convention Center
 - Palm School
- Within 10 minutes walking distance from bridge:
 - Long Center
 - Auditorium Shores
 - Sanchez Elementary School
 - City Hall
 - Downtown Jobs and Retail
 - 6th Street & Congress Avenue



Blue Line Bridge: Landscape



Context: Waterloo Greenway and Pontoon Bridge*



*included in Council Approved Waller Creek Design Plan



Opportunity



- In addition to being an important mobility corridor connecting north and south Austin, this new bridge can be a community connector - an inclusive PLACE serving the community broadly.
- A rare chance to create a new symbol for our community and our community's values.



History: Lady Bird Lake



Congress & Drake Bridges (1981)



Downtown Austin Flood (1935)



Town Lake Hike & Bike Trail (1972)



Context: Natural Elements



Context: Human Use



Context: Bats!



Context: Austin's Pedestrian Bridges



New Longhorn Dam Pedestrian Bridge



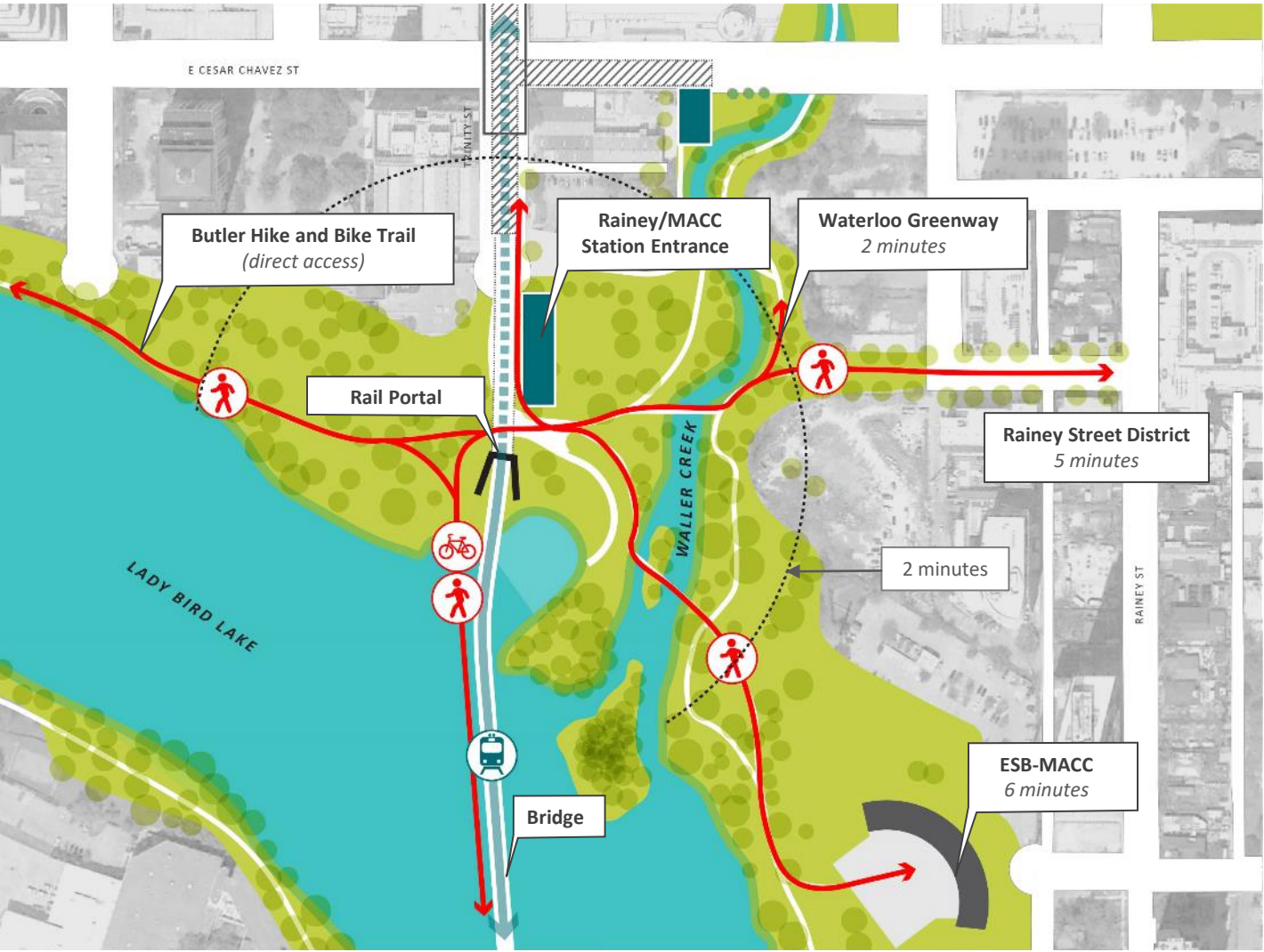
Pfluger Pedestrian Bridge



The Bridge: North Lake Shore Portal



The Bridge: North Shore Connections



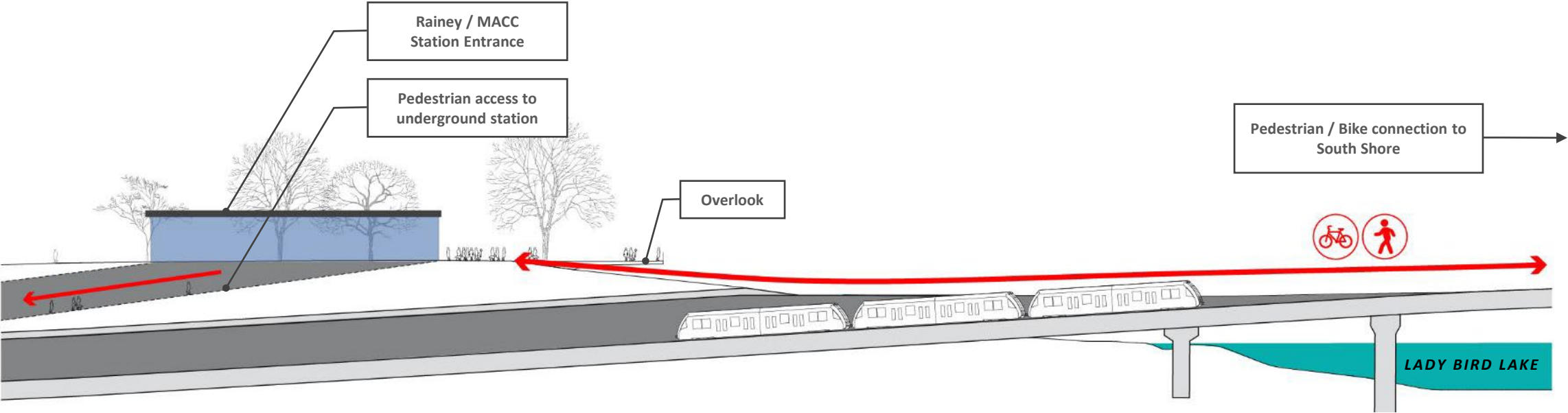
Butler Hike/Bike Trail



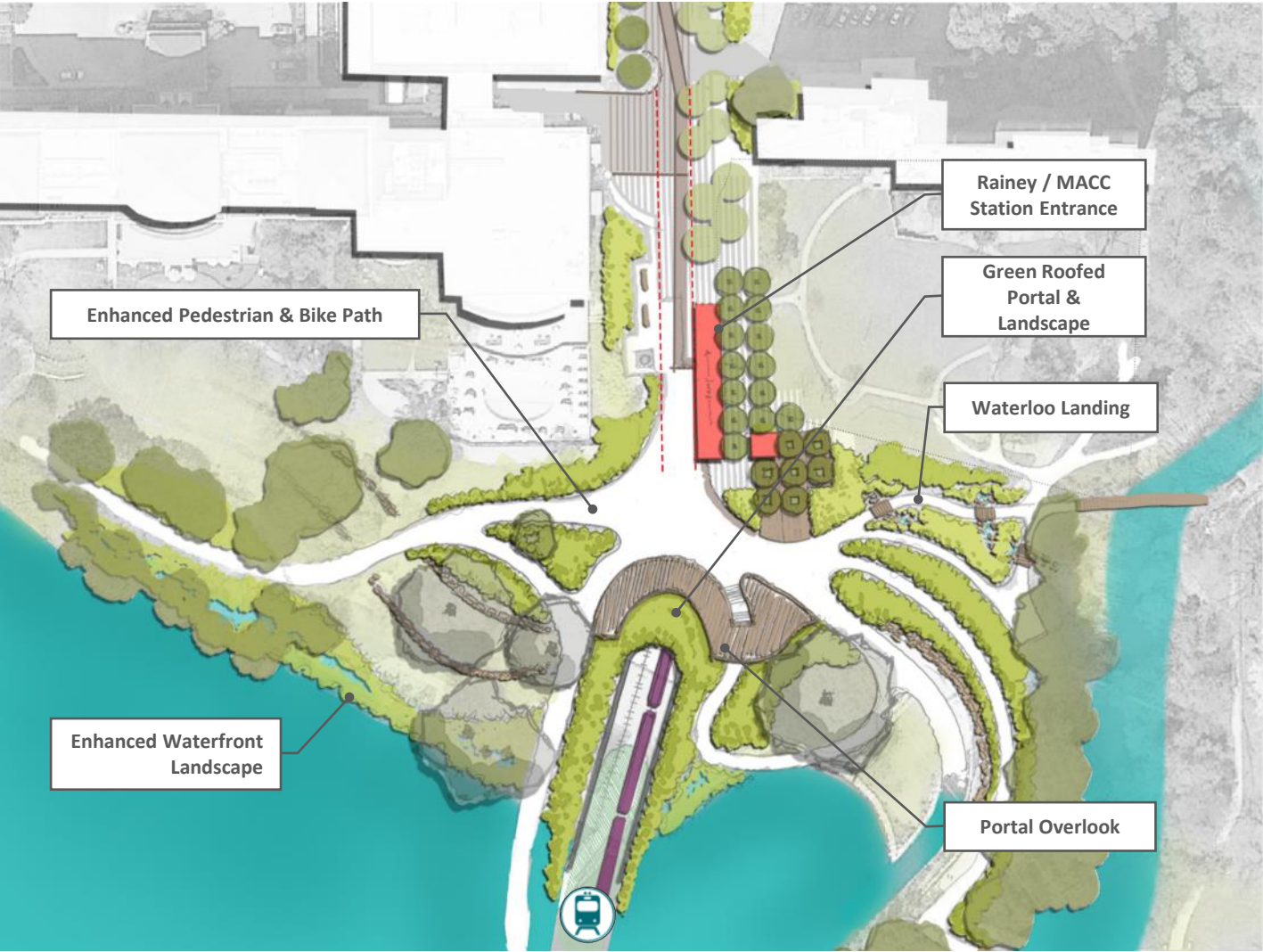
New Waterloo Greenway Bridge



The Bridge: North Portal



Landscape Opportunities: Overview



Precedents



Lady Bird Lake Bridge Workshop – High-level recap

- 10/12/21 from 5:30 – 7:00 p.m.
- Approximately 135 participants
- Many participants, including Austin Rowing Club members, expressed concerns about the Blue Line Project impact to the Waller Creek Boathouse and want more information about its potential relocation
- Other questions related to:
 - Use of buses on bridge
 - Congress Avenue Bridge bats
 - Noise level
 - Consideration of tunnel under Lady Bird Lake
 - Tunnel construction method and impacts
 - Parking availability
- Mapping exercise indicated that people would access the bridge using a variety of means, including by bicycle, on foot and by boat





Thank you!