

Corporate Headquarters Project Update



Robin Cappello

Director, Corporate Support Services



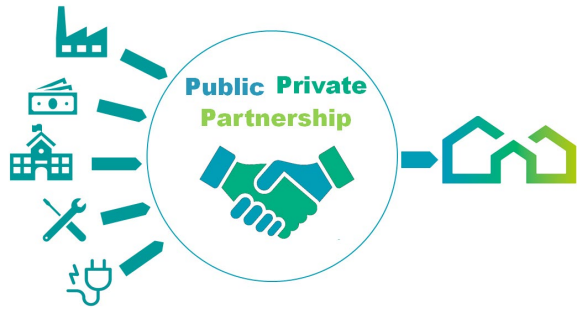
01/10/2022

Highlights

- 1 Project Status
- 2 Project Performance
- 3 Schedule and Upcoming Milestones

Project Report

Project Completion
100%



The Public Private Partnership real estate development model proved effective in delivering a high quality and cost-effective vertical construction project from inception through completion.

Project Brief

The Austin Energy Corporate Headquarters Project is largely complete with all major construction milestones achieved to position the Utility to commence operations within the facility.



The project goals were LEED Gold 4-Star minimum standards. Project is on target to achieve LEED Platinum /AEGB 5-Star accreditation.



The project goals were WELL Silver building standards. Project is on target to achieve WELL Gold accreditation.

Features:

- ✓ LED Lighting
- ✓ Smoke-Free Campus
- ✓ Ergonomic Furniture
- ✓ UV Air filtration MERV-13 (hospital grade)



Project Report



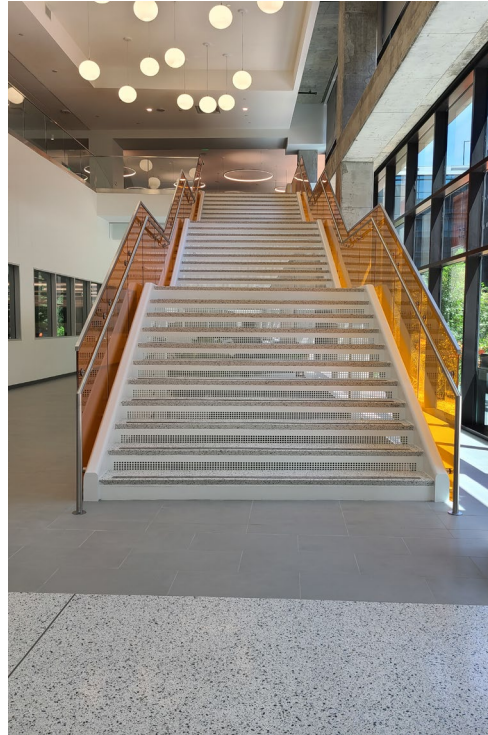
Austin Energy's Corporate Headquarters modern and sustainable design is a vibrant new addition to the Mueller Development



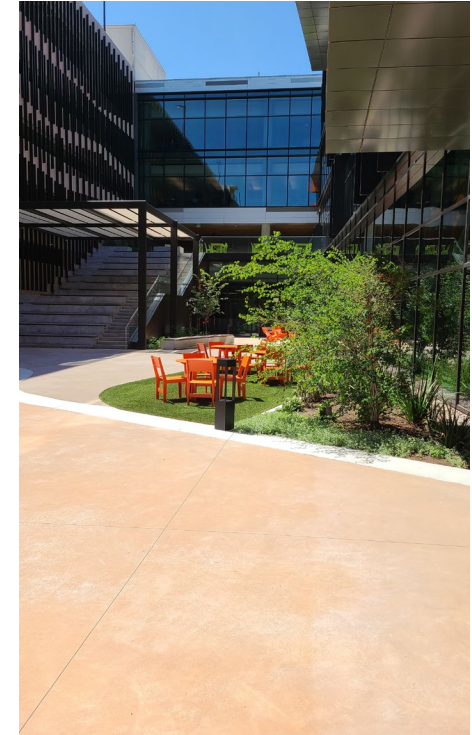
Project Report



Iconic Colorado River path embedded in the flooring of main lobby of the headquarters as a historical milestone reference for Austin Energy



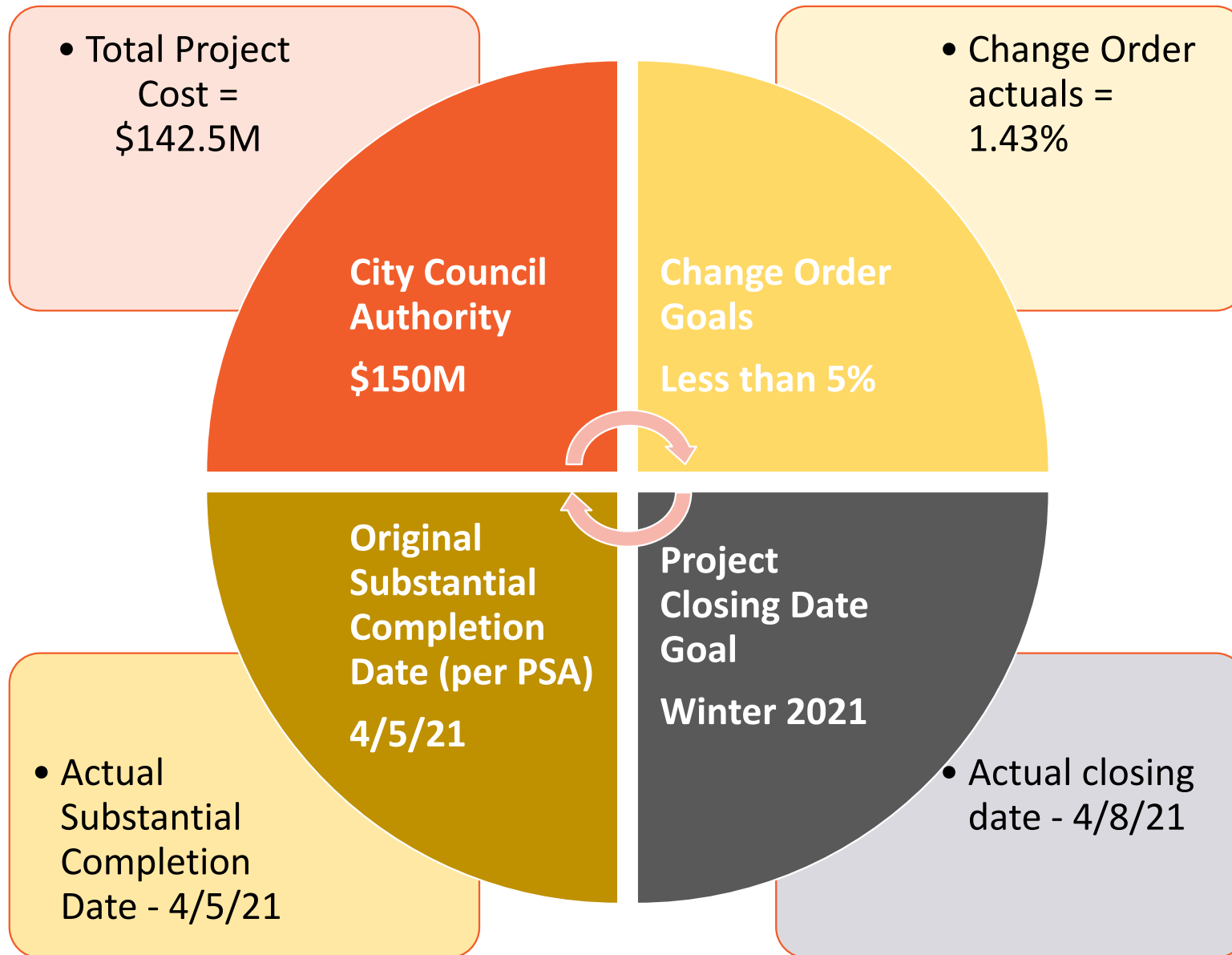
Prominent Staircase is a focal point of the building providing connections throughout the facility. It promotes '*chance meetings*' and opportunities to engage



Community Courtyard hosts amenities which allow for linkages to the outdoors and a variety of different meet-up offerings



Project Performance



Schedule and Upcoming Milestones

- All AE teams completed move activities in October 2021
- *AE fully operational at Corporate Headquarters November 1, 2021
- Workplace reintegration for AE January 31, 2022



**AE operated in a 'Stay Home, Stay Safe' workplace readiness posture*

A large orange hexagon with a gradient from light orange at the top to a darker orange at the bottom. The text "Q&A" is centered in white.

Q&A



**Customer Driven.
Community Focused.SM**

