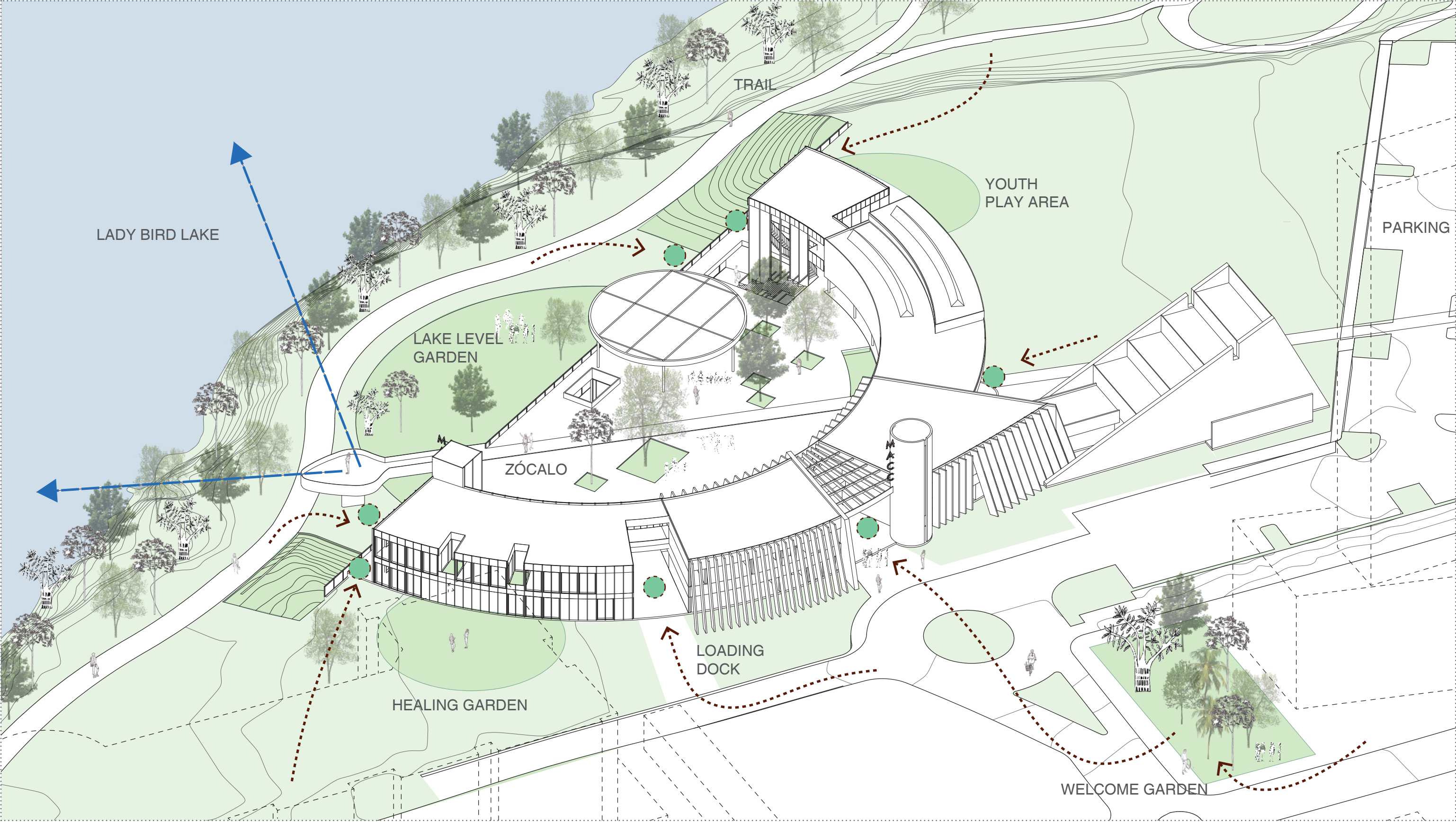


**CIP ID#5201.008**

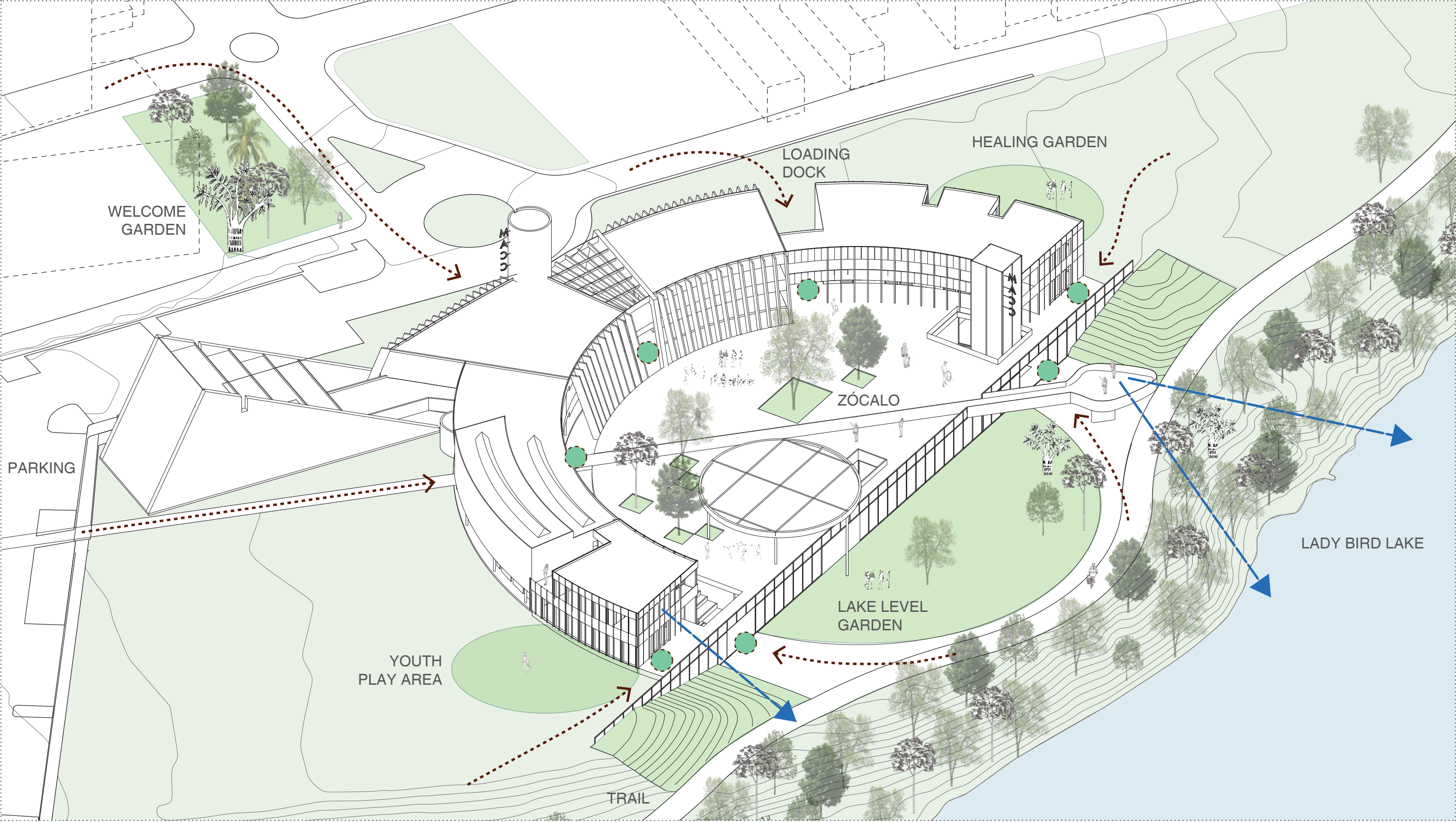
**ESB-MACC Phase 2 Improvements  
Schematic Design Presentation**

Miró Rivera-Tatiana Bilbao LLC

January 20, 2022







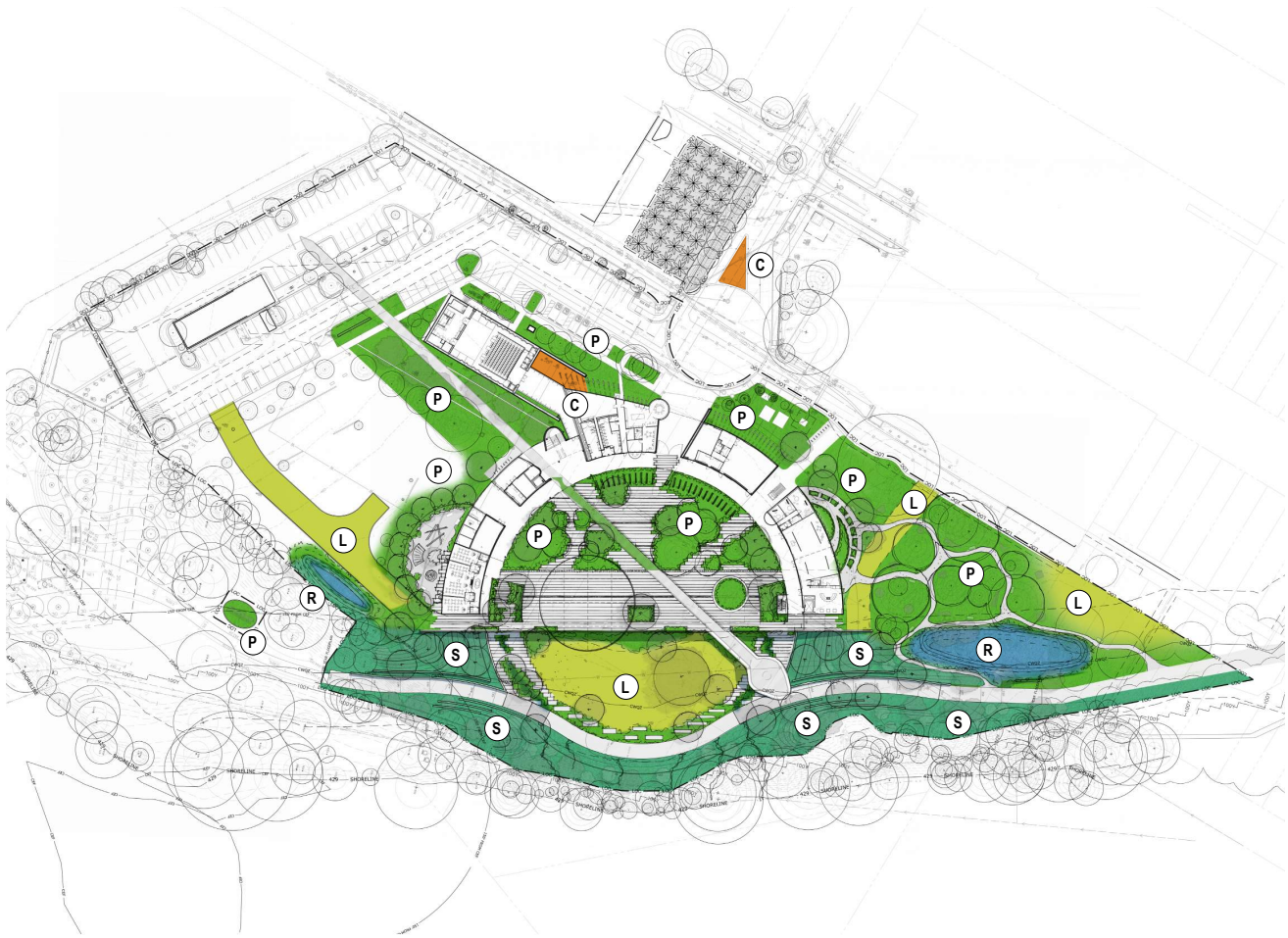












PLANTING ZONE DIAGRAM

- (SHRUBS, FORBS, GRASSES, GROUNDCOVERS)
- |   |                                 |   |                     |
|---|---------------------------------|---|---------------------|
| S | RIPARIAN W/ SLOPE STABILIZATION | R | RAIN GARDEN / SWALE |
| P | NATIVE PLANTING AREA            | L | LAWN                |
| C | CACTUS GARDEN                   |   |                     |



TREE DIAGRAM

- TREES (QUANTITY IS APPROXIMATE)
- |   |                   |   |             |   |       |
|---|-------------------|---|-------------|---|-------|
| ○ | TRANSPLANTED TREE | ● | LARGE TREES | ✱ | PALMS |
| ● | SPECIMEN TREE     | ● | SMALL TREES |   |       |



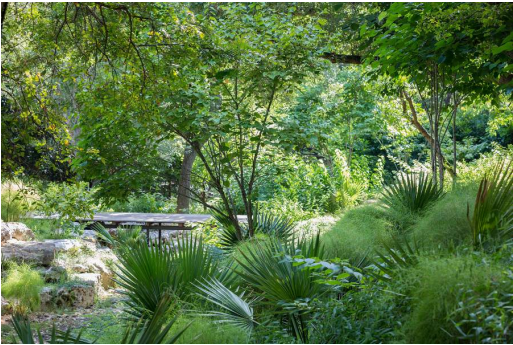
UNDERSTORY / RIPARIAN



UNDERSTORY / RIPARIAN



SLOPE / RIPARIAN



RAIN GARDEN



SUNNY SLOPE



UNDERSTORY / RIPARIAN



UNDERSTORY / RIPARIAN



SLOPE / RIPARIAN

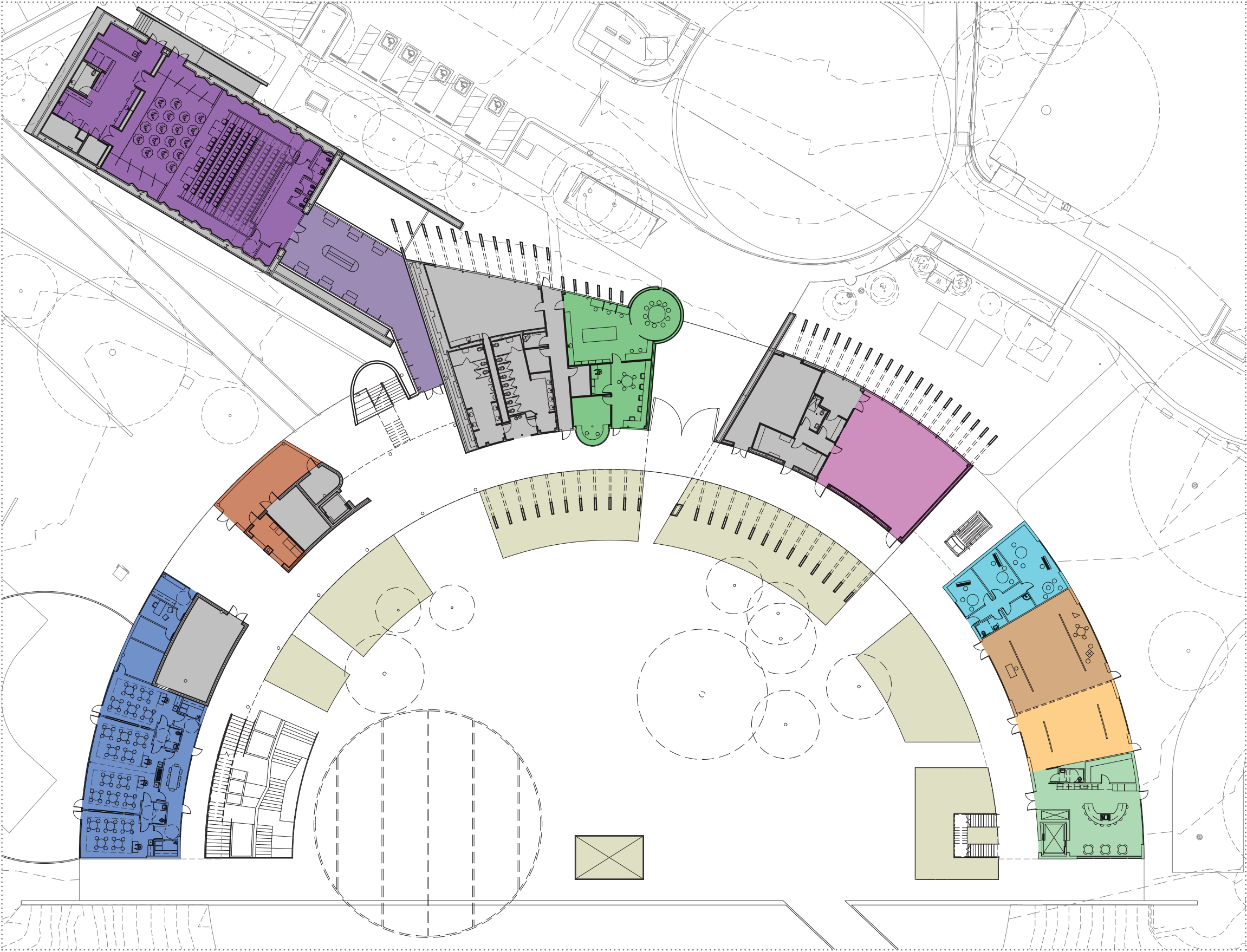


RAIN GARDEN



CACTUS GARDEN

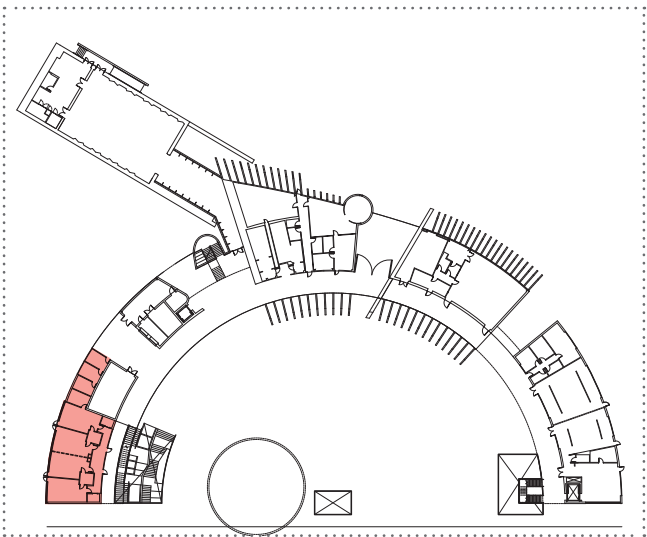




KEY PLAN

- Existing (Non-Renovated Space)
- Youth Education
- Utility / Mechanical
- Multi-use Auditorium
- Auditorium Lobby
- Reception / Visitor Information
- Dance Class
- Music Room
- Community Gallery
- Permanent Gallery
- Teaching Kitchen



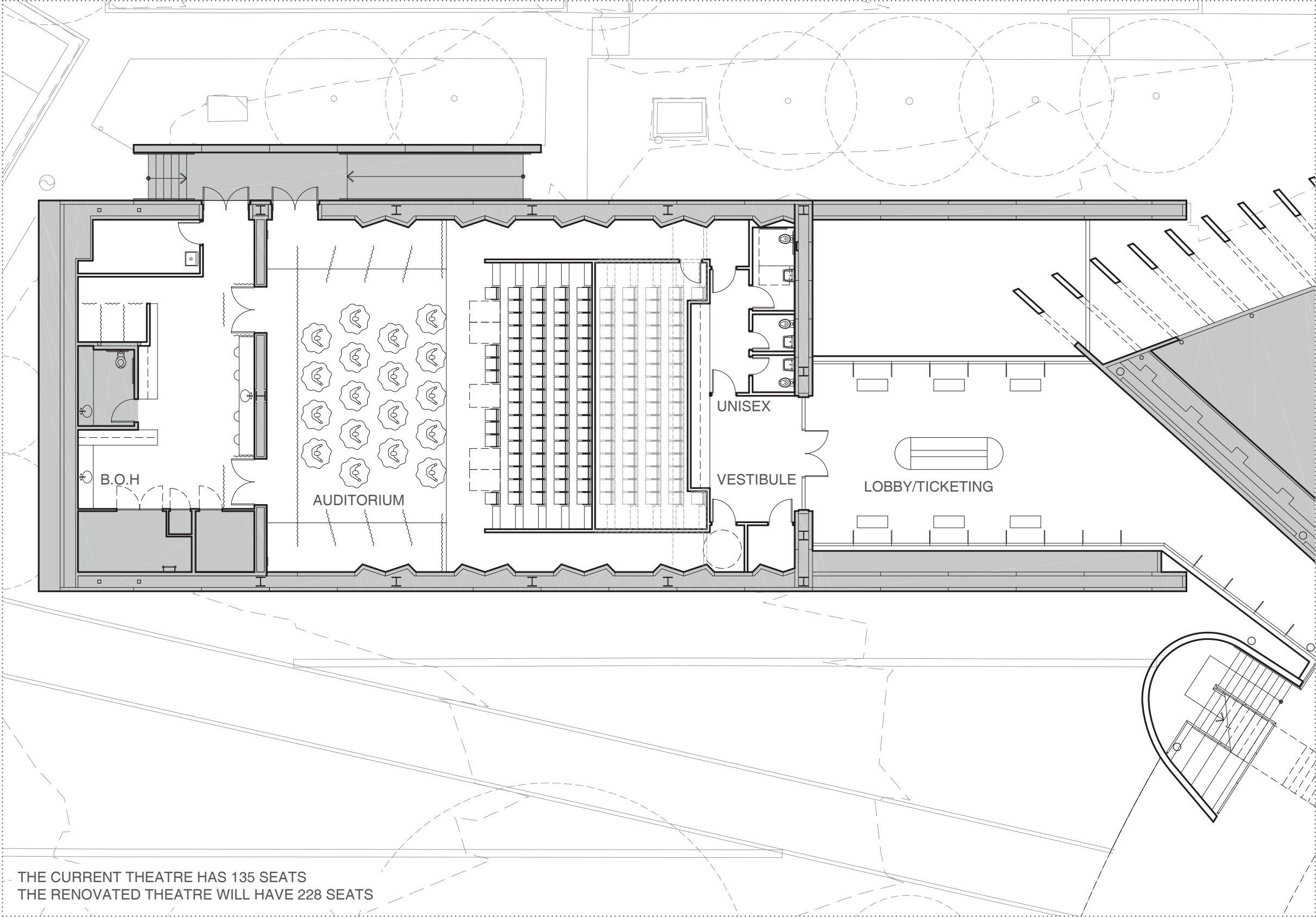


Key: Plan Level 1

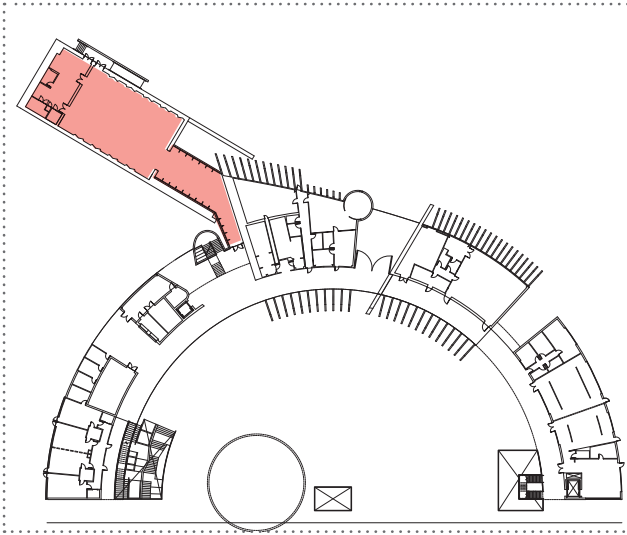






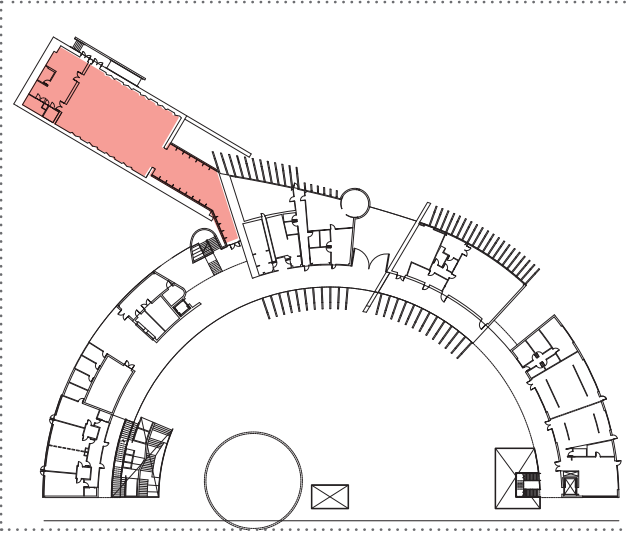
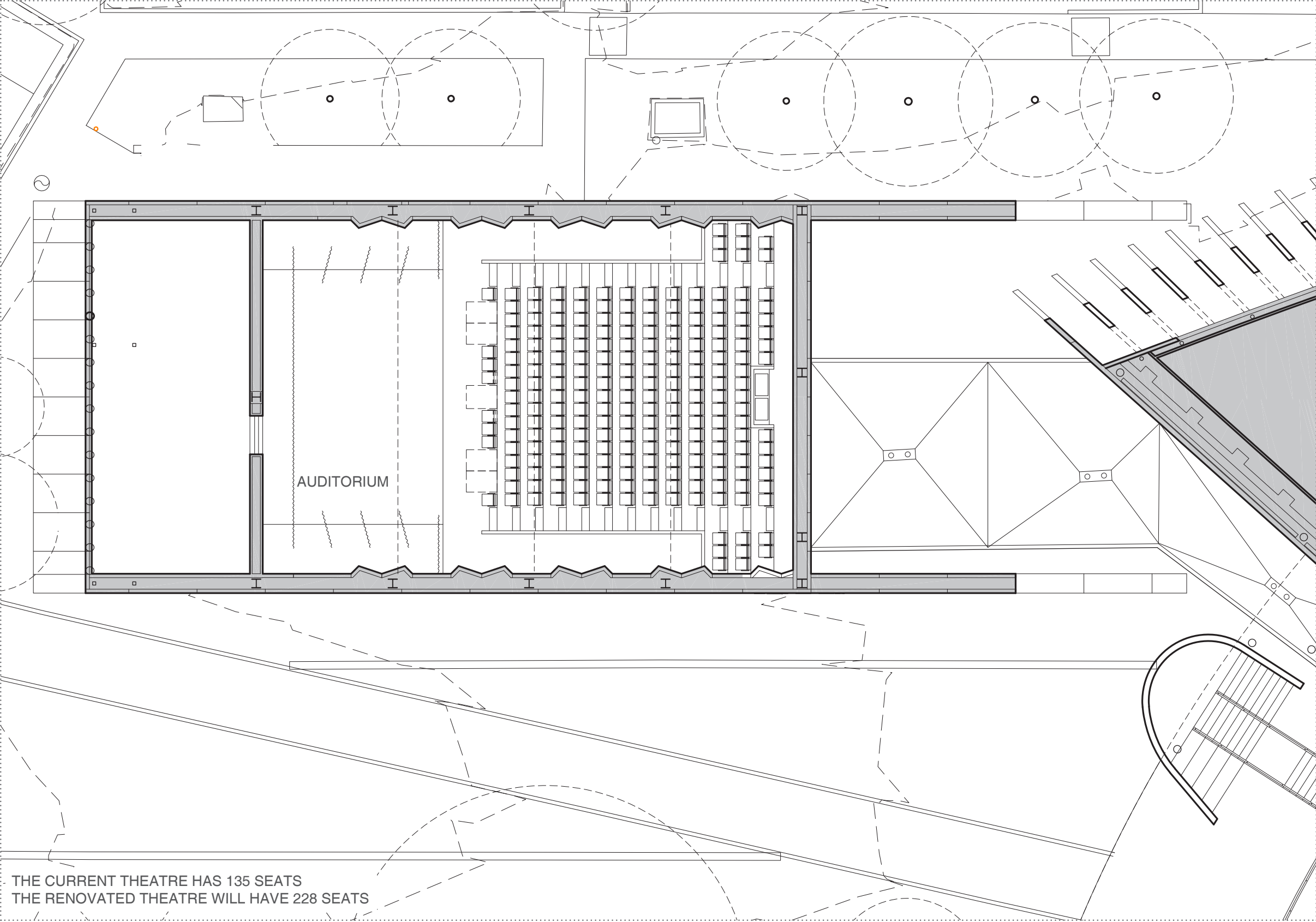


THE CURRENT THEATRE HAS 135 SEATS  
THE RENOVATED THEATRE WILL HAVE 228 SEATS



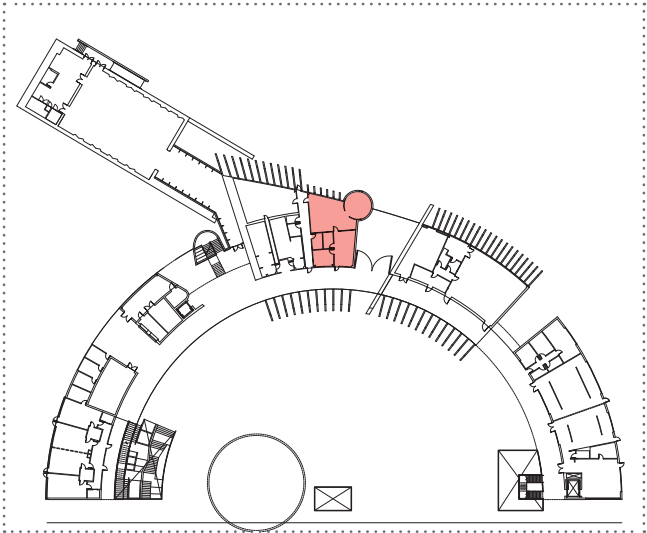
Key: Plan Level 1



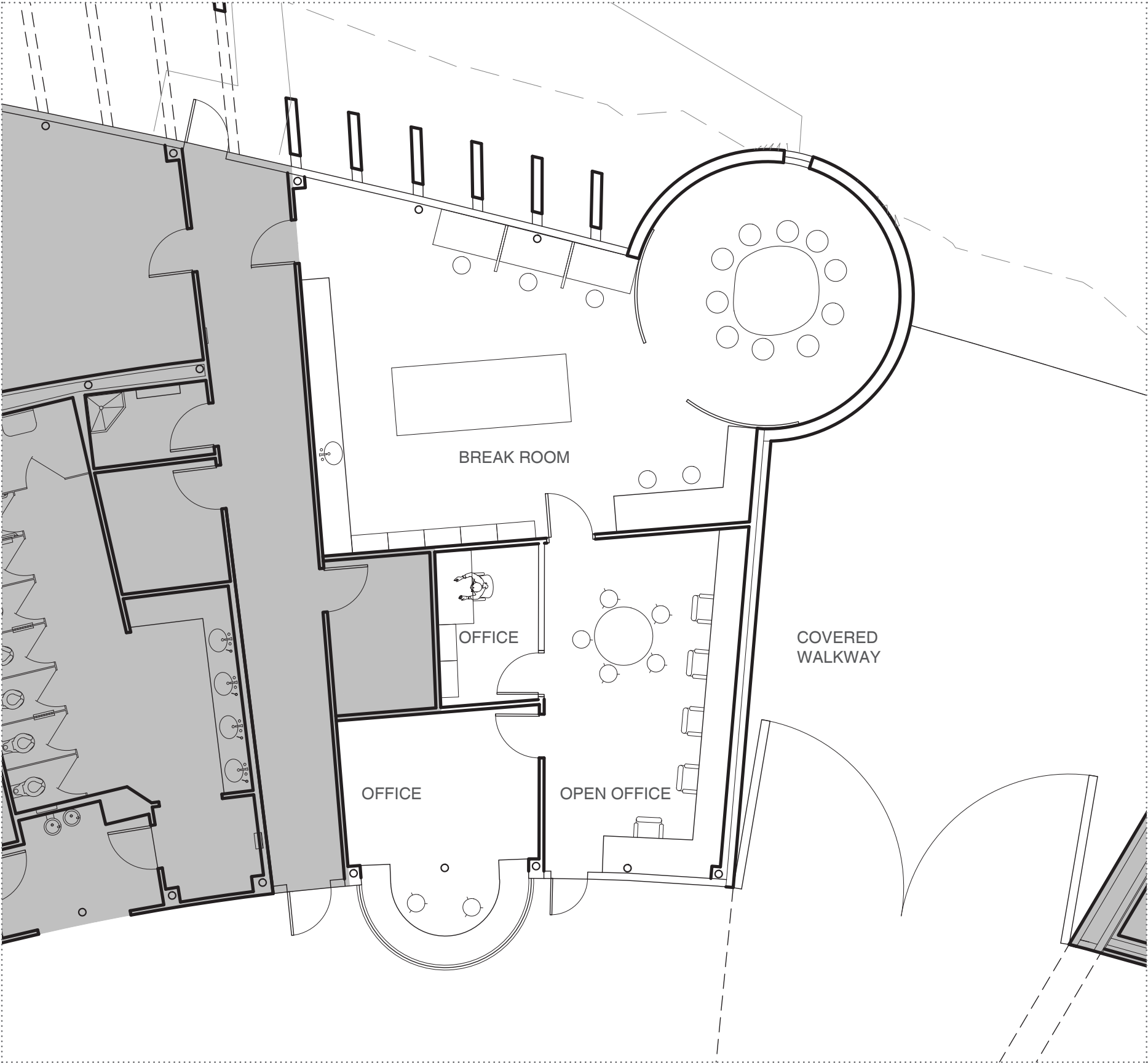


Key: Plan Level 1

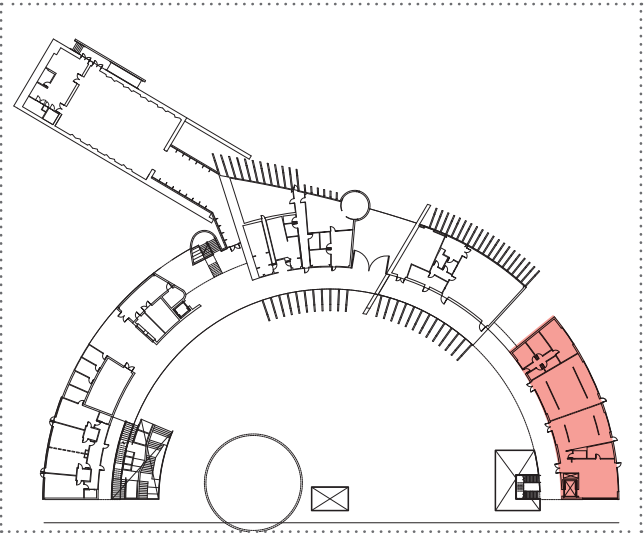




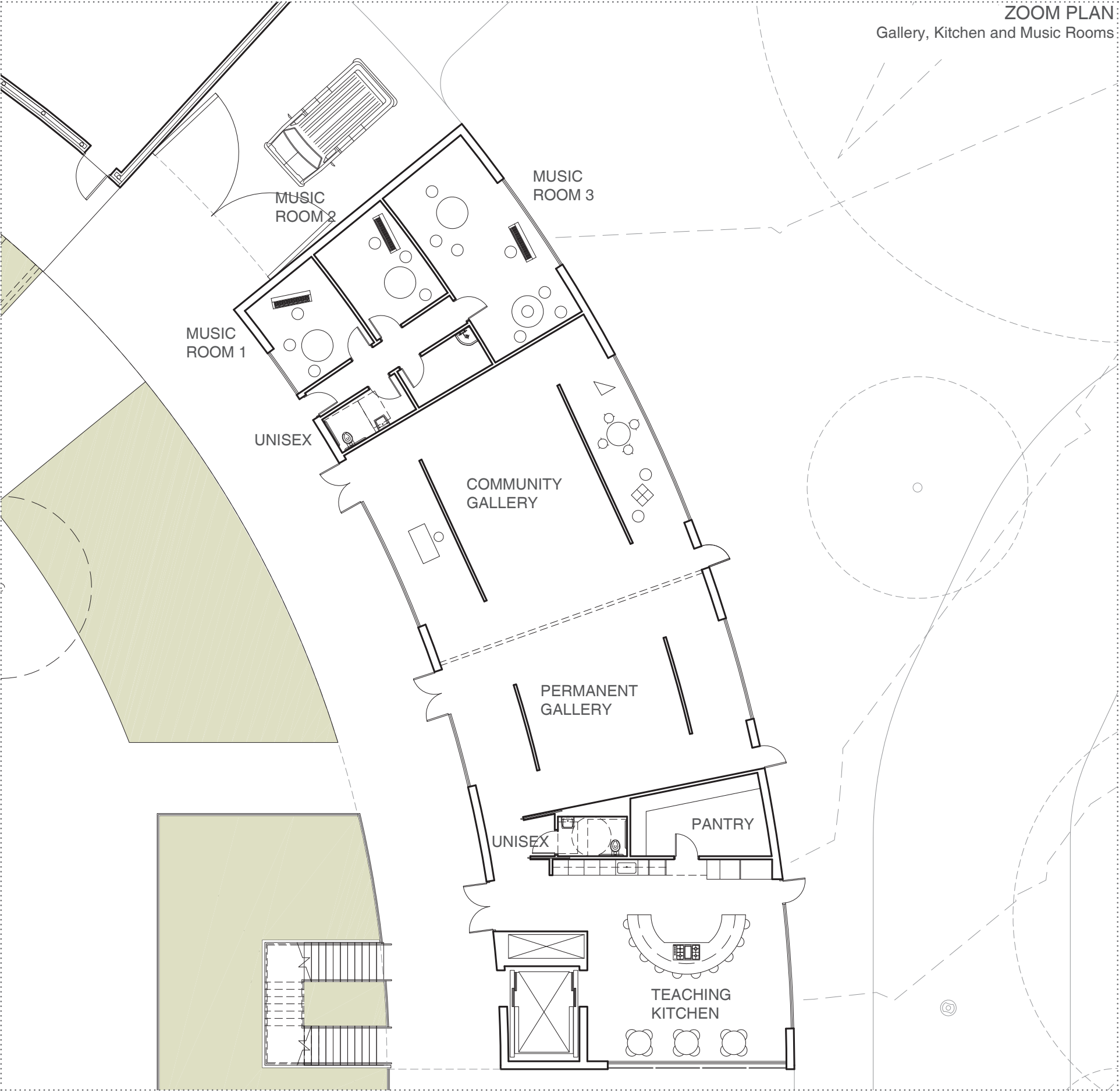
Key: Plan Level 1







Key: Plan Level 1

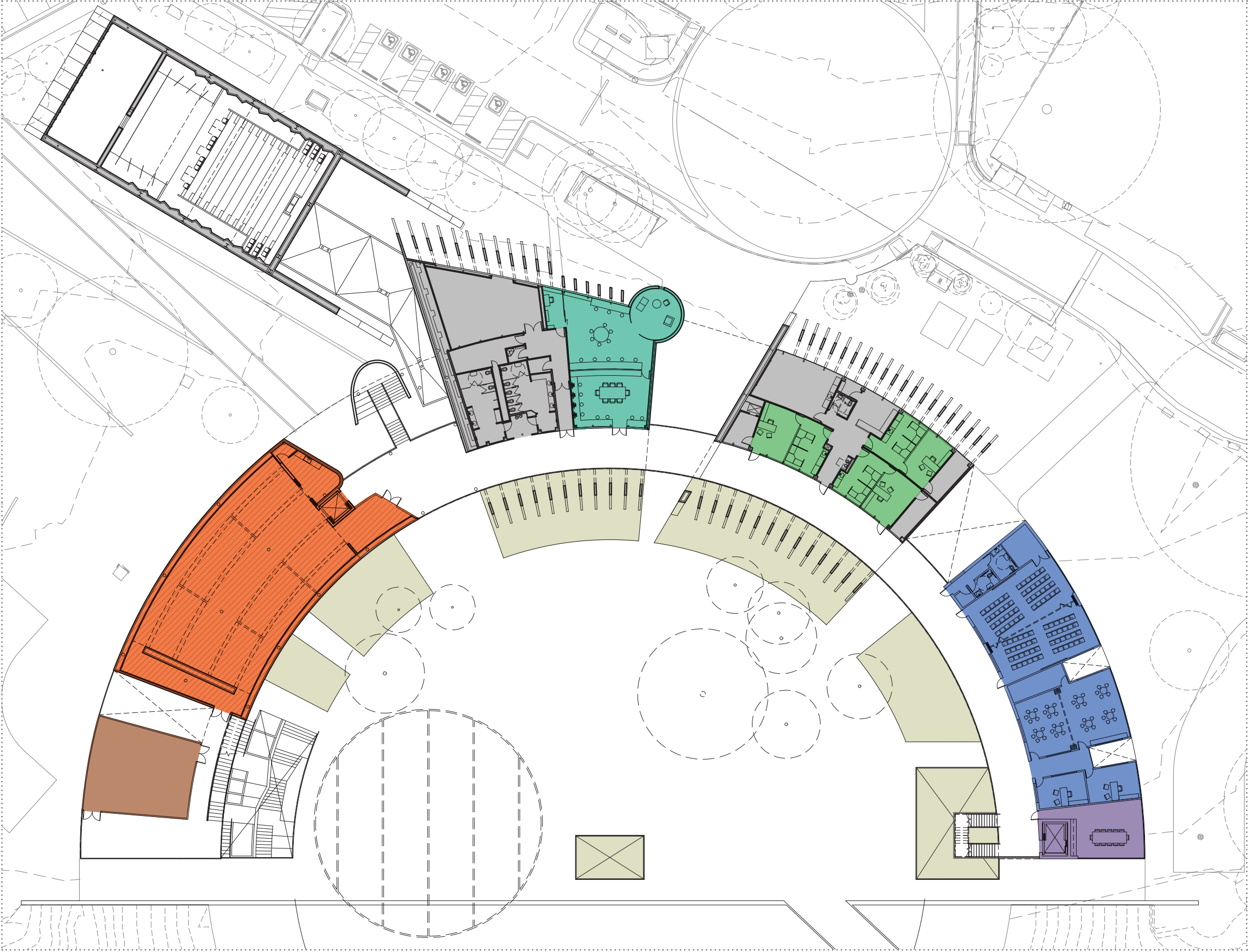




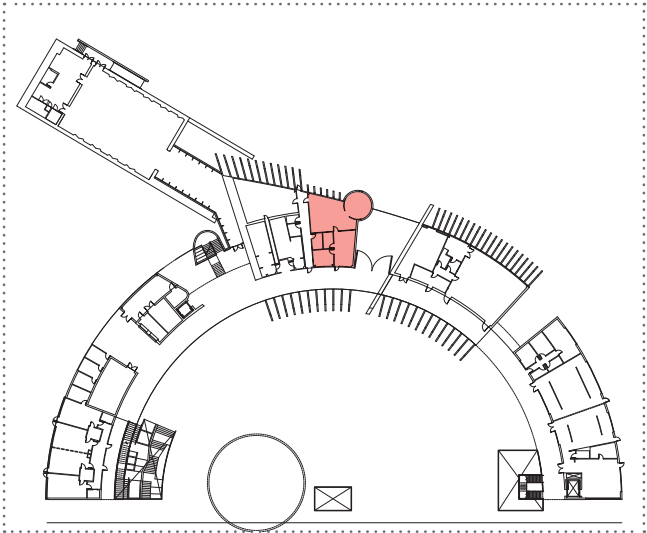




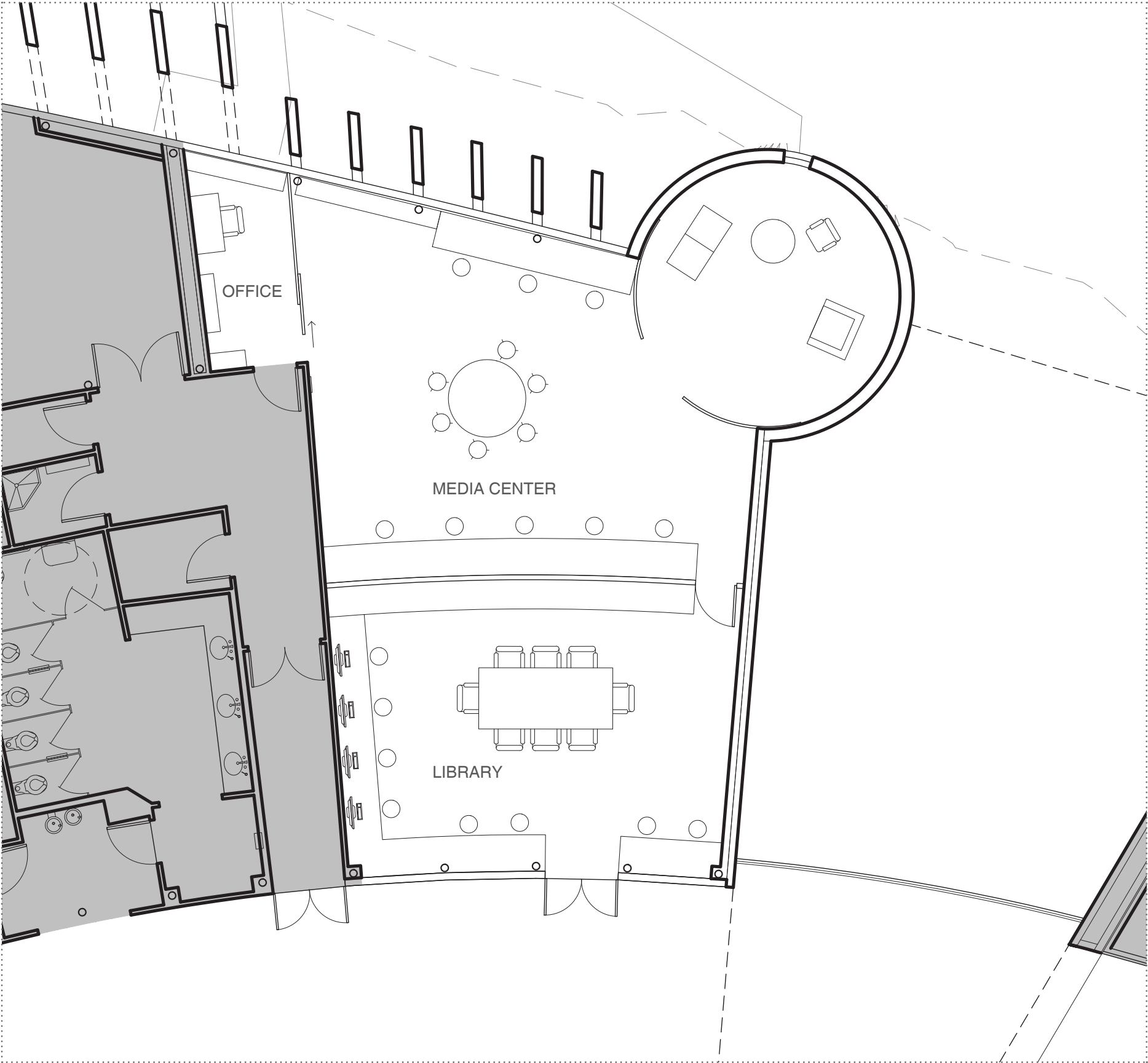
- KEY PLAN
- Existing (Non-Renovated Space)
  - Shell
  - Artist's Studios
  - Library / Media Center
  - Offices
  - Adult Education
  - Conference Room



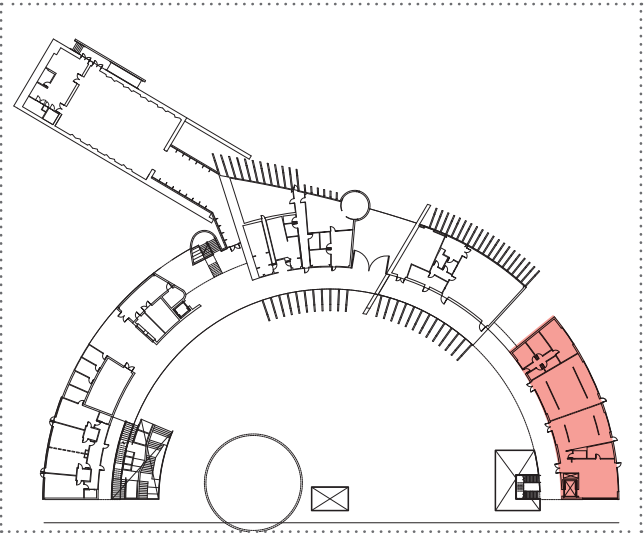




Key: Plan Level 2



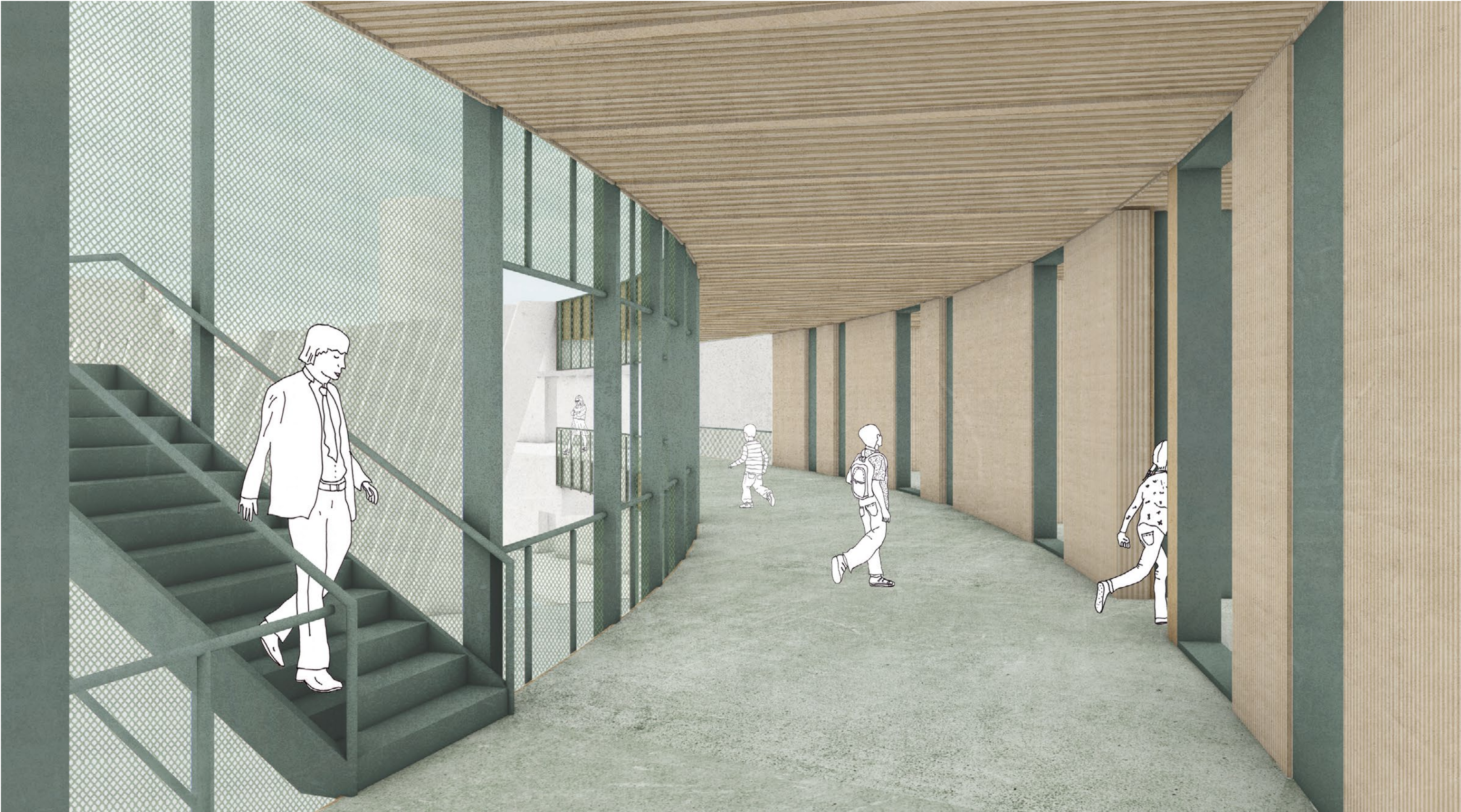




Key: Plan Level 2











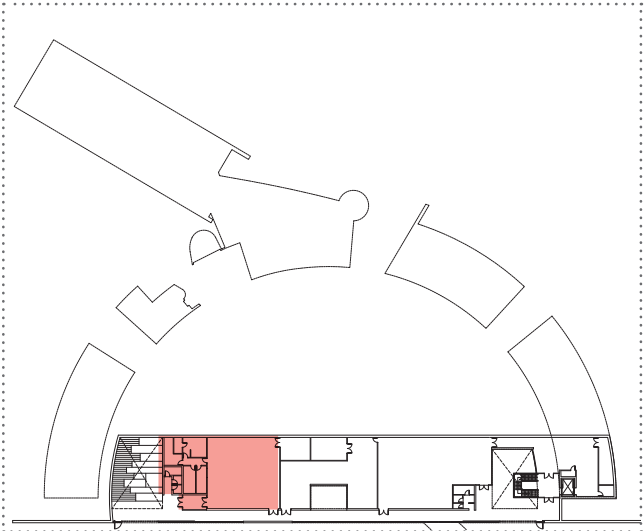




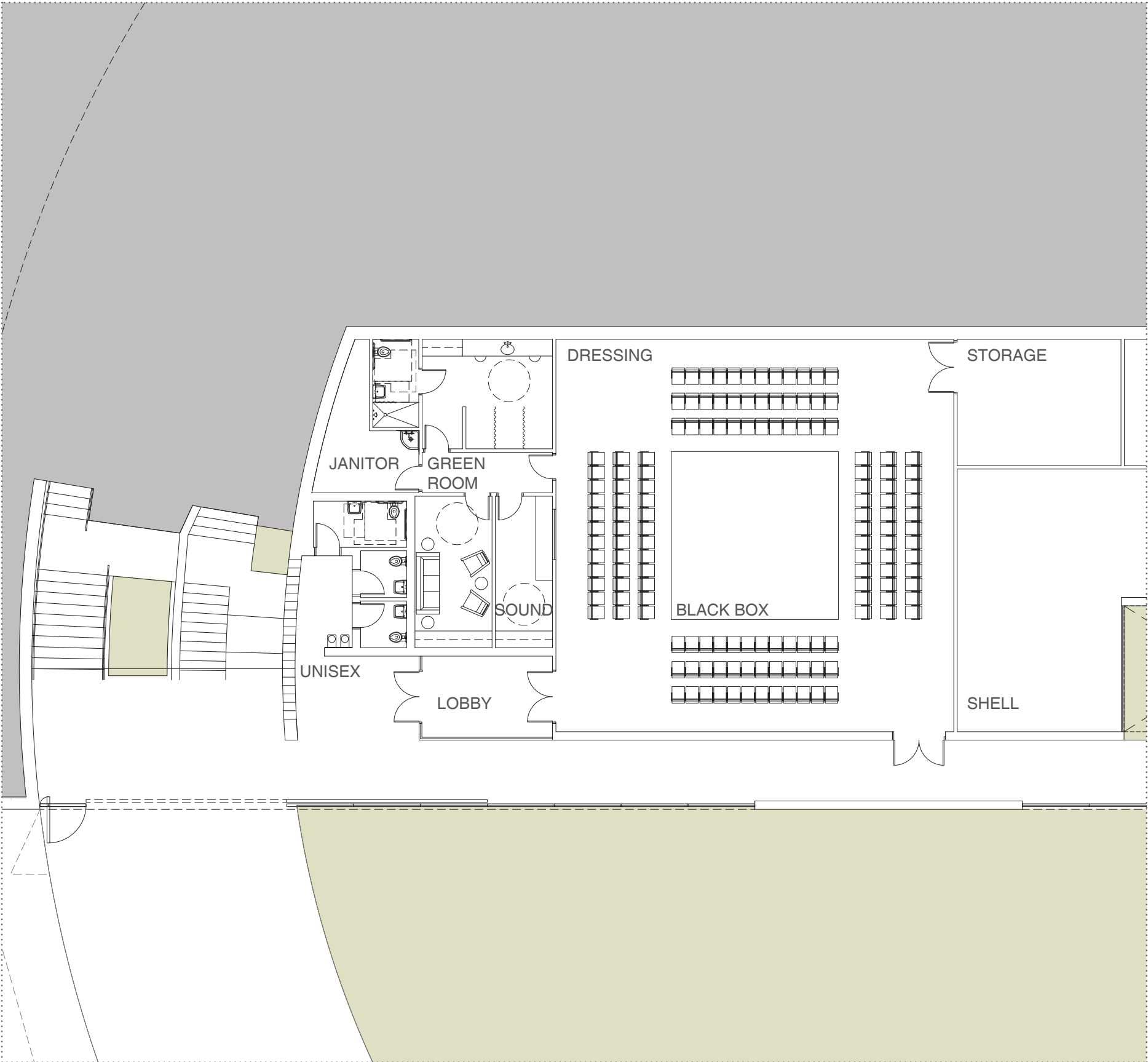
KEY PLAN

- Black Box
- Shell
- Permanent Gallery
- Prep. Room





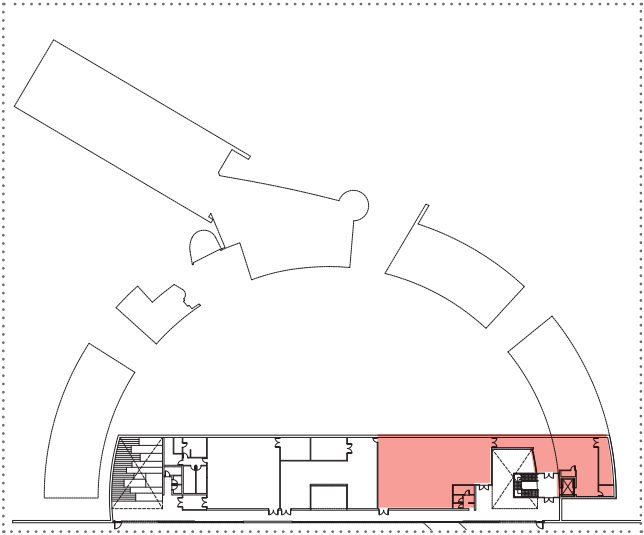
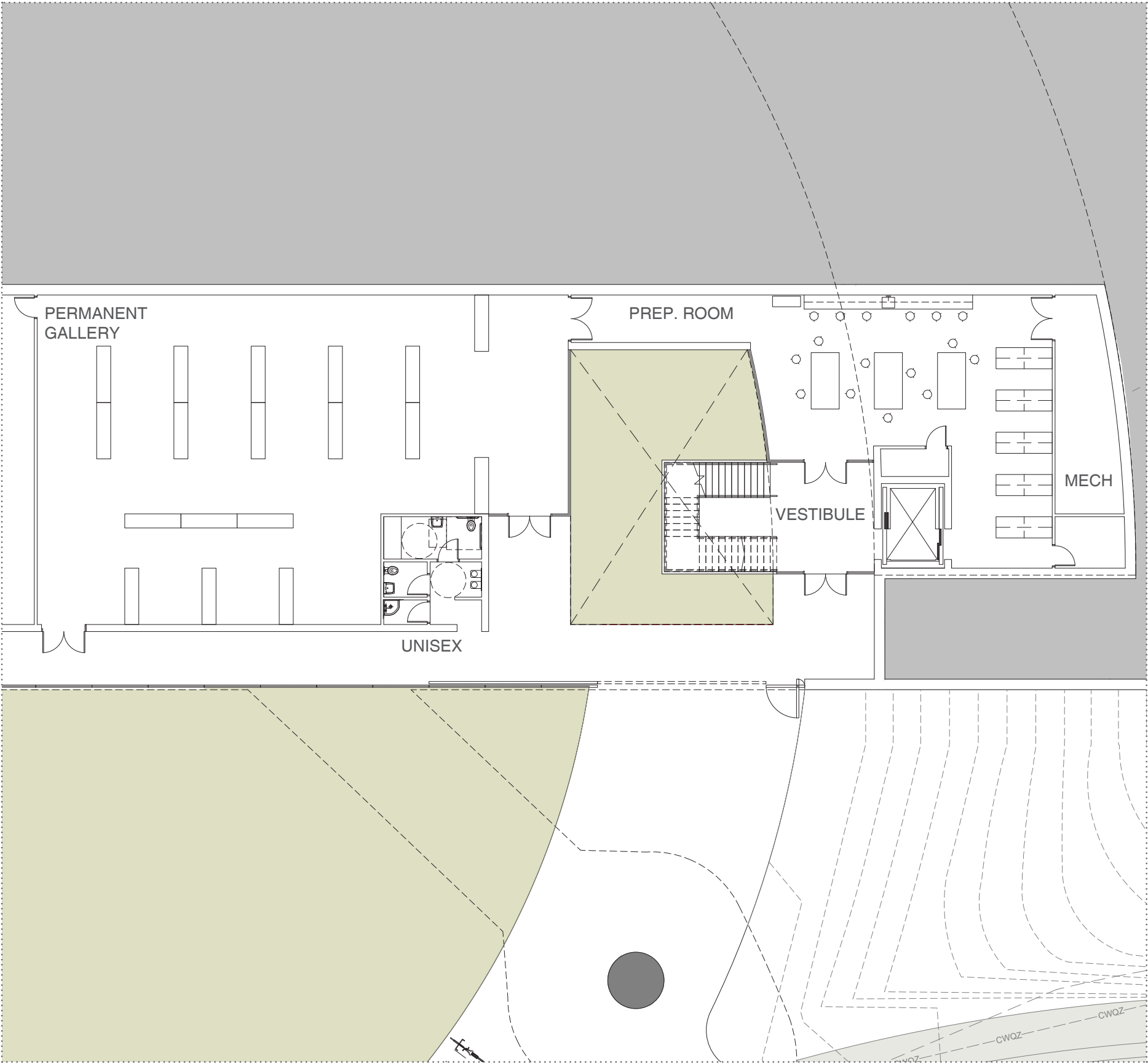
Key: Plan Lake Level











Key: Plan Lake Level





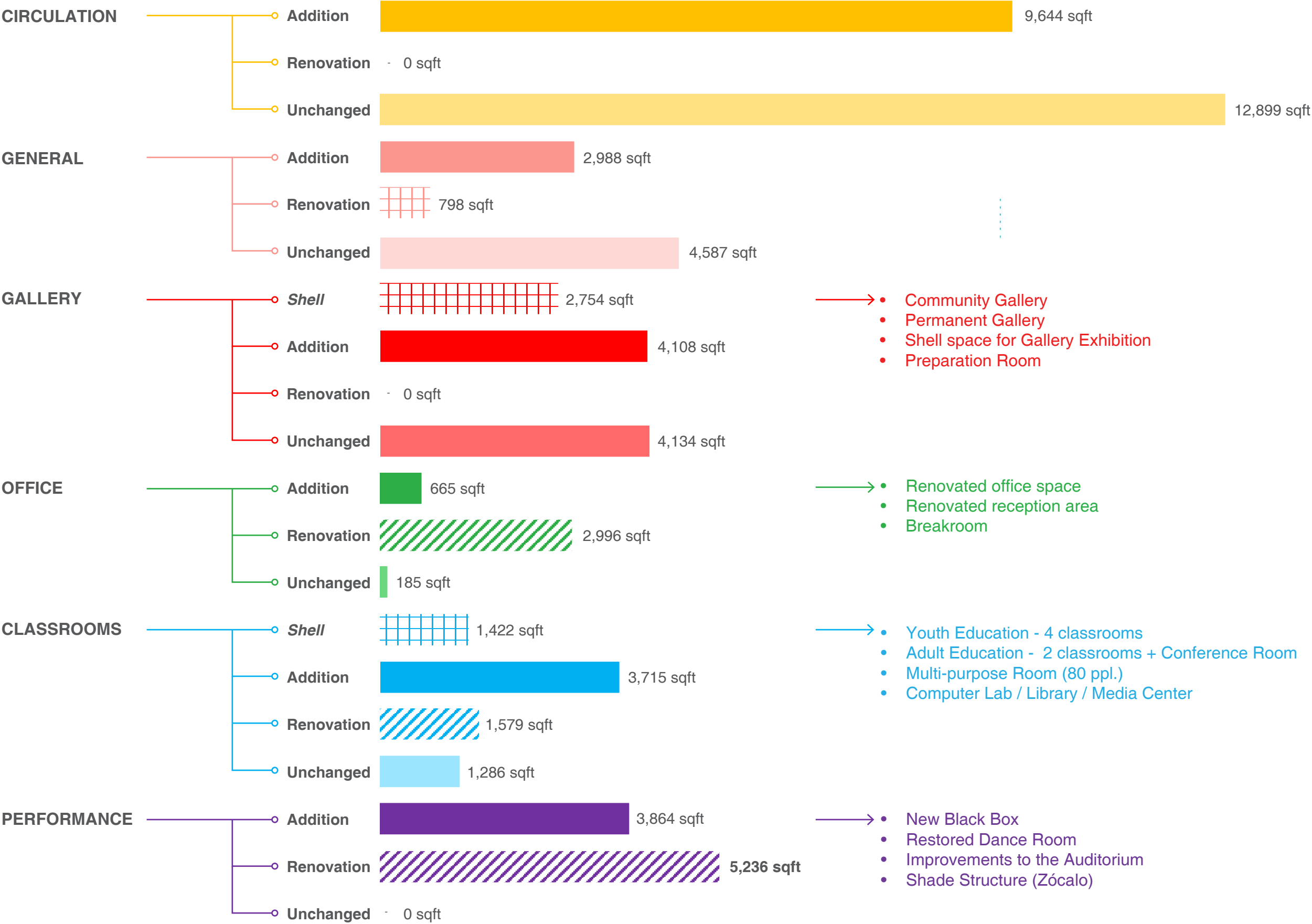


















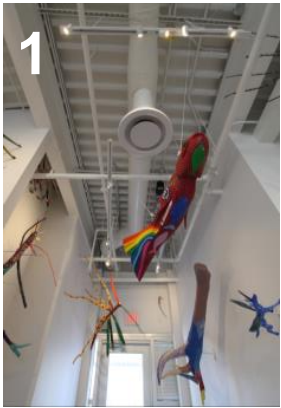
Tatiana Bilbao ESTUDIO





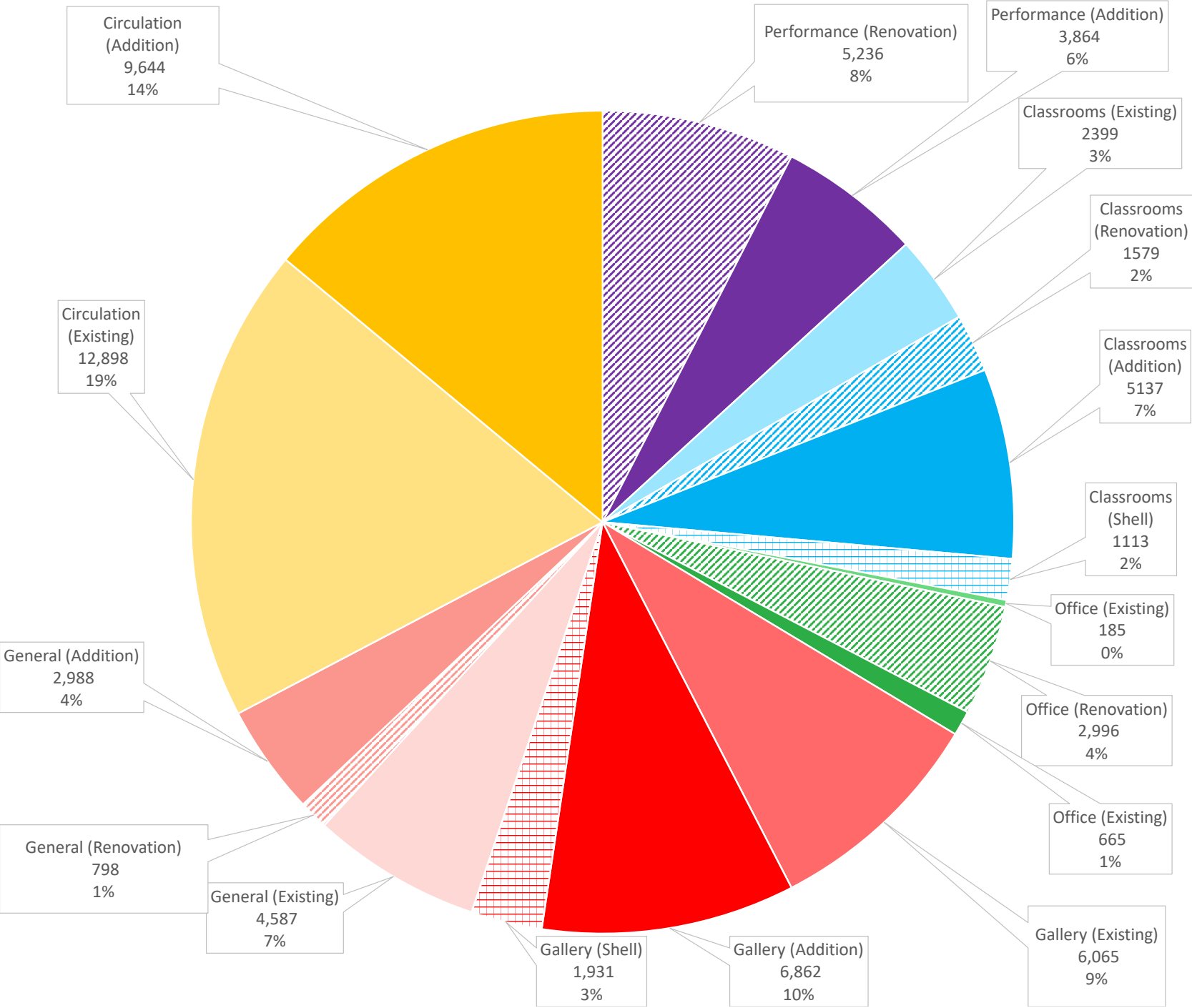
**END OF PRESENTATION**  
**THE FOLLOWING SLIDES ARE BACKUP ONLY**



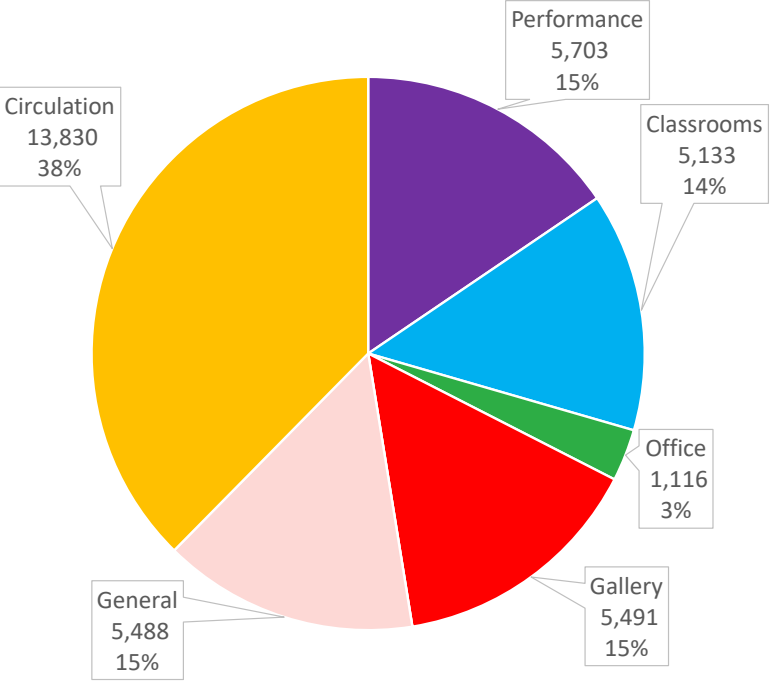




SCHEMATIC DESIGN BREAKDOWN



ACTUAL SF





| MACCp2 - SD SF Analysis |   |   | Actual SF<br>(exst'g per .dwg) | Phase 2 SF<br>(per Masterplan) | Delta<br>(Phase 2 - SF @ end) | Untouched @ end<br>of SD | Renovation @ end<br>of SD | Addition @ end of<br>SD | Shell @ end of<br>SD | Subtotal @ end of SD |        |        |        |
|-------------------------|---|---|--------------------------------|--------------------------------|-------------------------------|--------------------------|---------------------------|-------------------------|----------------------|----------------------|--------|--------|--------|
|                         |   |   | Subtotal                       |                                |                               | Subtotal                 | Subtotal                  | Subtotal                | Subtotal             | Subtotal             | LVL 0  | LVL 1  | LVL 2  |
|                         | 1 | Performance & Support Spaces                  | 5,703                          | 8,343                          | 2848                          | 2,091                    | 5,236                     | 3,864                   | -                    | 11,191               | 3,209  | 7,982  | -      |
|                         | 2 | Classrooms and Meeting Rooms                  | 5,133                          | 12,010                         | -2895                         | 2,399                    | 1,579                     | 5,137                   | 1,113                | 9,115                | -      | 3,343  | 5,772  |
|                         | 3 | Offices                                       | 1,116                          | 4,863                          | -1017                         | 185                      | 2,996                     | 665                     | -                    | 3,846                | -      | 1,615  | 2,231  |
|                         | 4 | Gallery/ Visual Arts                          | 5,491                          | 14,875                         | -1948                         | 6,065                    | -                         | 6,862                   | 1,931                | 12,927               | 6,437  | 2,356  | 4,134  |
|                         | 6 | General Support Spaces                        | 5,488                          | 9,175                          | -802                          | 4,587                    | 798                       | 2,988                   | -                    | 8,373                | 1,304  | 4,441  | 2,628  |
|                         | 7 | Circulation and Lobbies (Interior & Exterior) | 13,830                         | 18,007                         | 4535                          | 12,898                   | -                         | 9,644                   | -                    | 22,542               | 3,717  | 11,562 | 7,263  |
|                         |   |   | 36,761                         | 68,483                         | (489)                         | 28,225                   | 10,609                    | 29,160                  | 3,044                | 67,994               | 14,667 | 31,299 | 22,028 |