



**To:** Zero Waste Advisory Commission

**From:** Ken Snipes  
Director  
Austin Resource Recovery

**Date:** April 13th, 2022

**Subject:** Director's Monthly Report to the Zero Waste Advisory Commission

---

### **Austin Resource Recovery Annual Report**

Austin Resource Recovery (ARR), a department of the City of Austin, has released its Fiscal Year 2021 Annual Report. From facility closures and service suspensions to environmental equity and weekly curbside collections, the report details the extensive work ARR accomplished while continuing to navigate COVID-19 and enduring Winter Storm Uri.

"Despite the challenges that accompanied the global COVID-19 pandemic – a national shortage of truck drivers, multiple service delays and suspensions, unforeseen expenses, and the aftermath of winter Storm Uri – we have managed to adapt and find innovative ways to provide essential services and programs that prioritize people and our planet. I am proud to highlight these accomplishments with this year's annual report," ARR Director Ken Snipes said.

Some highlights include:

- ARR collected 63,030 tons of recycling, 53,455 tons of compost and 138,955 tons of trash through curbside collections from 209,981 single-family homes and multifamily properties with four units or fewer.
- 987 tons of household hazardous waste and 1,323 tons of other hard-to-recycle material were collected. 222 tons of household hazardous waste were recycled or reused and 33 tons of ReBlend Paint were produced from unwanted paint customers dropped off.
- ARR managed the debris cleanup from Winter Storm Uri, resulting in the collection of over 1,700 tons of large brush material through 518 special service requests placed by customers. ARR also experienced significant increases in the amount of material collected through the curbside composting program (which collects food scraps and residential yard trimmings) during the month of March, with an approximately 60% increase of tonnages collected, compared to March 2020.
- The diversion rate at the end of fiscal year 2021 was 41.96%. The City of Austin is committed to a zero waste goal to reduce the amount of trash sent to landfills by 90% by the year 2040.

### **Earth Day 2022**

Austin Resource Recovery (ARR) is celebrating Earth Day 2022. This year, we are focused on getting batteries out of the blue carts and collected for proper recycling. Improper handling of batteries is a safety concern and has been expressed as a priority by our material recovery facilities.

This year's campaign includes an engaging direct mail piece to all ARR residential customers with education on how to properly dispose of batteries. Staff is collaborating with both of the city's recycling processors on coordinated messaging. Additionally, ARR will host or participate in several events over the weekend to:

#### **Saturday, April 23**

- Battery collection – Rutherford Lane Campus, 10am-1pm
- Forklift Danceworks - Dances for dogs and people who walk them at Austin Animal Center, 1pm-4pm
- Battery collection—The Union at Easton Park, 10am-1pm Sunday, April 24
- Waterloo Earth Day, noon-5pm
- EarthDay Austin (signage and materials only)

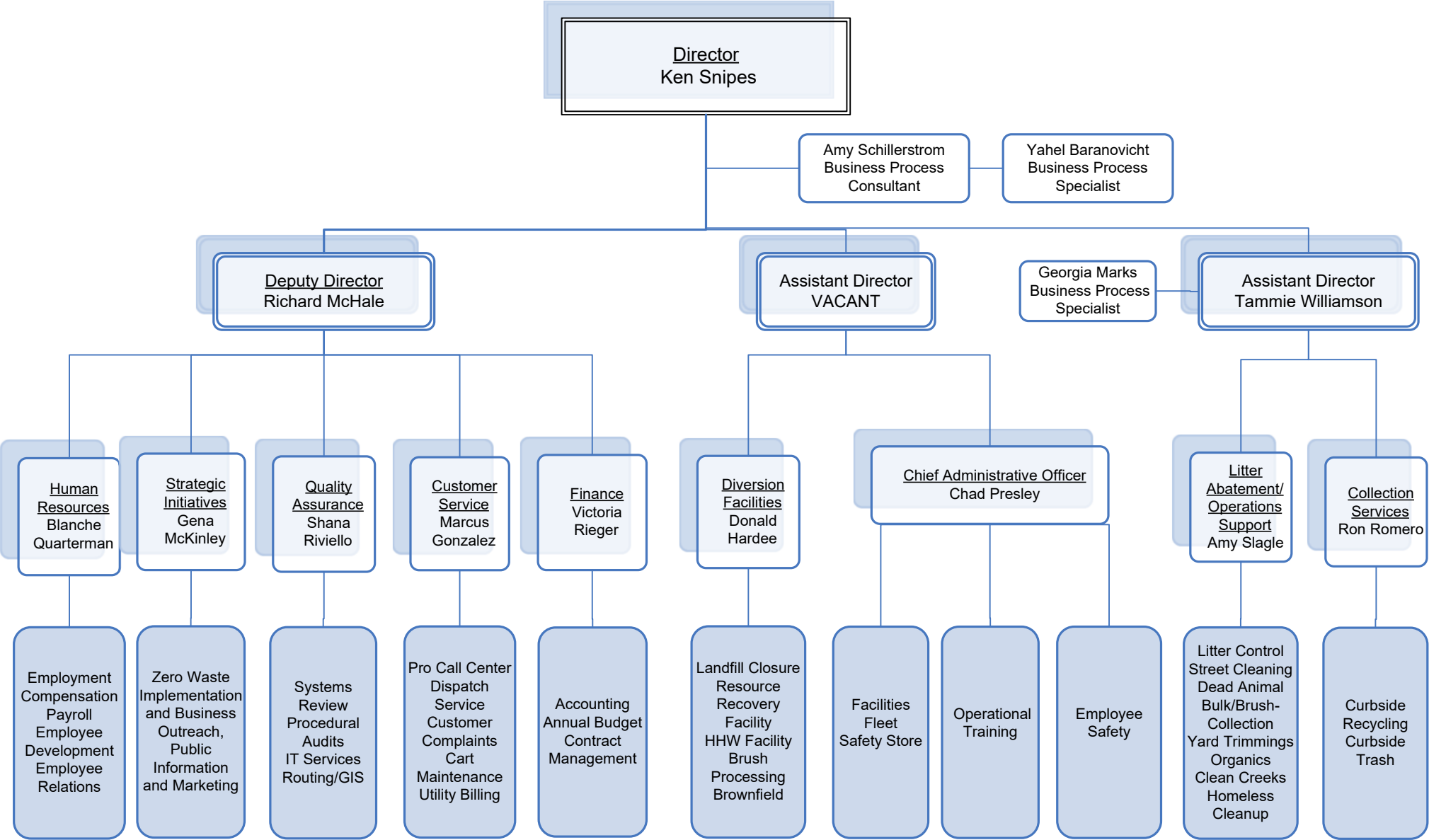
### **2021 ARR Customer Survey Results**

The 2021 ARR Customer Survey was conducted by the Austin Energy Data Analytics and Business Intelligence Team and randomly distributed to residents through email to all the districts February 7- 25, 2022. This is the second year the survey was also conducted over the phone (February 7-March 5, 2022). ARR collects the information annually during the first quarter to determine how customers are engaging with our strategic direction goal and identify areas of opportunity to improve the services we provide to our customers. Listed below are the completion rates for the survey:

894 - Total completions of the 2021 Customer Satisfaction survey

- 126 - Phone completions
- 768 - Email completions
- 867 - English completions
- 27 – Spanish completions

Details of the results will be presented during a future ZWAC meeting.





ARR Solicitations Update  
As of March 29, 2022  
ZWAC Meeting April 13, 2022

**Upcoming Solicitations and Agreements Under Development (in alphabetical order):**

1. Household Hazardous Waste and Recycling Collection Services: ILA – The City will provide household hazardous waste, recycling, and other collection services for Travis County households located outside the incorporated limits of the city.
2. Mattress Recycling Program: RFP – The Contractor shall develop and implement a mattress and box spring collection and recycling program. No existing contract.

**Solicitations Expected to be Posted Within the Next 90 Days:**

1. Lead Abatement Services: IFB/CCO – The Contractor shall provide removal, encapsulation, and disposition of lead. No existing contract.

**Published Solicitations:**

1. Solid Waste Industry Consulting Services: [RFQS 1500 JTH4011REBID](#) - This solicitation was posted on March 07, 2022 and is scheduled to close on April 05, 2022. The Consultants shall provide professional solid waste industry consulting services, including delivering industry knowledge, technical advice, and recommendations related to the solid waste industry on an as needed basis. No existing contract.

**Solicitations in Evaluation or Negotiation:**

1. Vehicle Wrap and Installation Services: [IFB 1500 AMA1069](#) – This solicitation was posted on January 31, 2022 and closed on March 22, 2022. The Contractors shall provide vehicle wrap and installation services on various vehicles. No existing contract.

**Definitions:**

CCO (Capital Contracting Office): Administers the procurement of professional and construction services.

CO-OP (Cooperative Contract): A contract that has been competitively bid and issued by another government or purchasing alliance with the intention of sharing it with other governmental entities.

ILA (Interlocal Agreement): A collaborative contract between local government entities (for example, ARR and a county, state, or school district) to provide more efficient and less costly services, where any payments are made from current revenues.

IFB (Invitation for Bid): Formal bidding documents inviting suppliers to submit pricing for goods or services.

RFI (Request for Information): Used to obtain industry input, feedback, or reactions from potential suppliers prior to issuing a solicitation.

RFQ (Request for Quotation): Informal request to suppliers to provide quotes on specific goods or services.

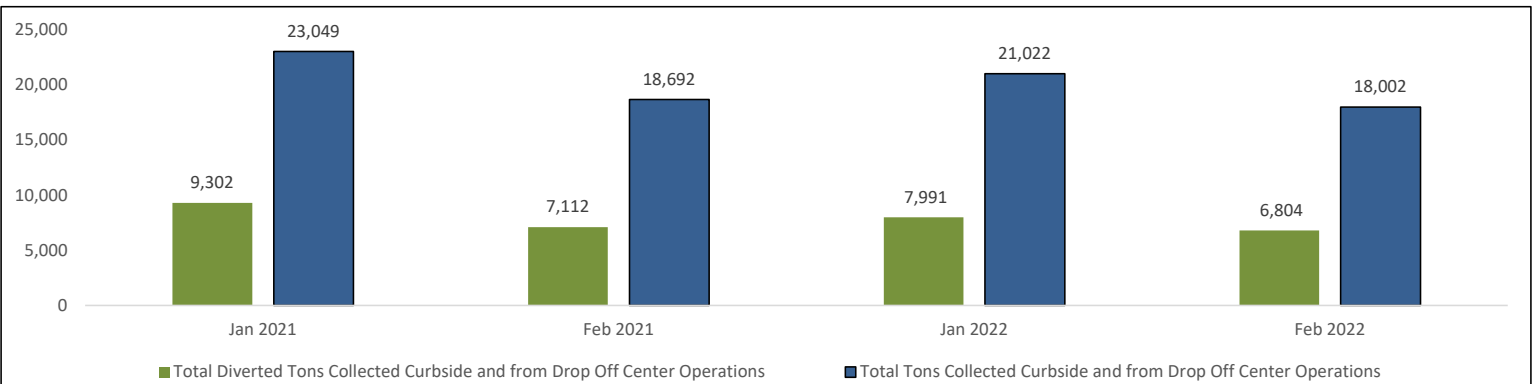
RFQS (Request for Qualifications): Formal solicitation used when qualifications are the main criteria for professional services.

RFP (Request for Proposals): Formal request for a supplier to provide a solution and cost estimate to a complex need.

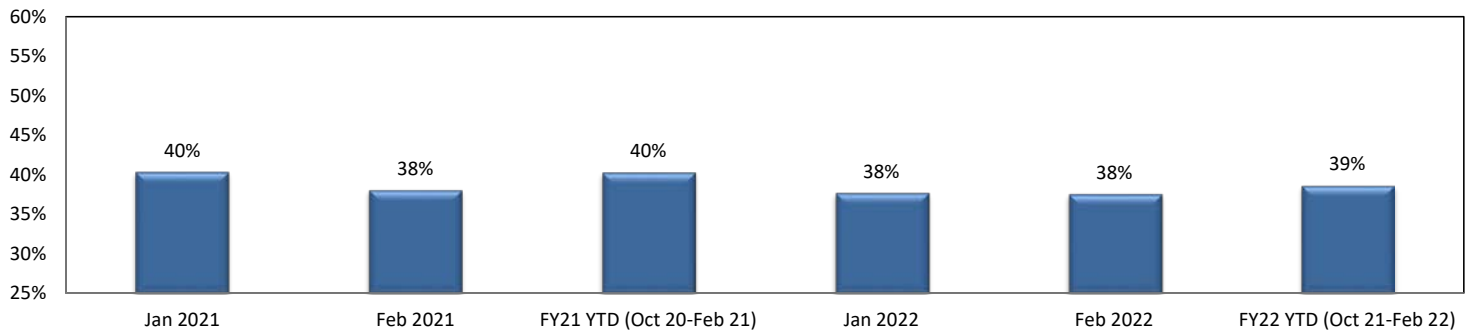
# Austin Resource Recovery Curbside Collection and Drop Off Center Operations

		LAST FISCAL YEAR					CURRENT FISCAL YEAR			
Description of Services		FY 2020	FY 2021	Jan 2021	Feb 2021	FY21 YTD (Oct 20-Feb 21)	Jan 2022	Feb 2022	FY22 YTD (Oct 21-Feb 22)	FY 2022 Goal
Tons Disposed	Tons of curbside Trash	136,709	138,955	11,585	10,010	56,780	11,334	10,050	56,053	133,800
	Tons of Curbside Bulk Disposed	5,379	11,651	1,151	916	4,532	661	231	3,073	11,220
	HHW Operations Tons Disposed	347	765	17	12	170	52	43	244	530
	Estimated Tons of Curbside Recycling Residuals*	11,302	11,321	994	642	4,552	984	875	4,797	10,803
	Total Disposed Tons Collected Curbside and from Drop Off Center Operations	153,737	162,693	13,747	11,580	66,034	13,032	11,198	64,167	156,353
*Estimated tons of curbside recycling processed by vendors as residual - based on bi-annual sample route audit										
Tons Diverted	Tons of curbside recycling	52,122	51,709	4,686	3,005	21,164	4,050	3,543	19,941	51,197
	RRC Tons Recycled/Reused	1,218	1,323	33	23	413	152	89	623	2,200
	RRC Tons of Brush Collected	1,722	563	9	0	158	0	0	8	2,000
	HHW Operations Tons recycled/reused	247	222	1	2	56	16	18	97	470
	Tons of Drop Off Center Collections Recycled/Reused	3,060	1,784	28	12	493	141	102	657	4,415
	Tons of Curbside Yard Trimmings	48,105	56,481	3,901	3,232	20,103	3,374	2,727	17,658	50,000
	Tons of Curbside Bulk Recycled	127	323	16	13	134	28	5	71	255
	Tons of Curbside Brush Collected	3,323	8,339	652	848	2,892	385	399	2,398	6,872
	Tons of Curbside Textiles Collected	25	42	3	2	14	3	3	14	75
	Tons of Carts Recycled	193	163	16	0	50	9	25	96	200
	Total Diverted Tons Collected Curbside and from Drop Off Center Operations	106,955	118,841	9,302	7,112	44,850	7,991	6,804	40,835	113,014
Tons of Curbside Compost Collected**		38,711	53,455	3,231	3,123	17,081	3,374	2,727	17,658	50,000
***Tons of Curbside Compost Collected" is included in the "Tons of Yard Trimmings Collected"										
Total Tons Collected Curbside and from Drop Off Center Operations		260,692	281,534	23,049	18,692	110,884	21,022	18,002	105,002	269,367
Estimated Percent of Curbside Collected Materials Diverted from Landfills by ARR		40.38%	41.96%	40.31%	38.03%	40.24%	37.69%	37.53%	38.60%	41.07%
Pounds of Trash collected per customer per pickup		25.57	25.52	25.67	22.16	25.19	24.74	21.93	24.49	24.32
Number of Trash and Recycling Customers		205,670	209,419	208,314	208,479	208,076	211,444	211,508	211,243	211,603
Pounds of Recycled materials collected per customer per pickup (every other week)		19.61	19.10	20.88	13.38	18.89	17.79	15.56	17.53	18.74
Pounds of Yard Trimmings collected per customer per week		9.05	10.43	8.69	7.20	8.97	7.41	5.99	7.76	9.15
Number of Yard Trimmings/Organics Customers		204,506	208,209	207,125	207,250	206,869	210,187	210,238	209,993	210,128
Total tons of Dead Animals Collected from COA rights-of-way and the animal shelter		34	31	2	1	13	4	3	18	30

## Austin Resource Recovery Curbside Collection and Drop Off Center Operations



### Estimated Percent of Curbside Collected Materials Diverted from Landfills by ARR

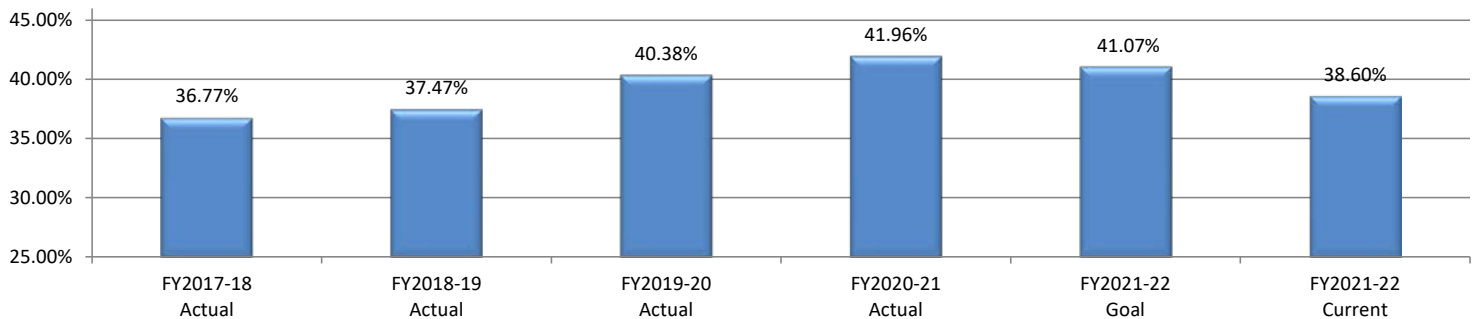


#### Reporting Status and Diversion Results for All Categories of Waste Generation

Category of Waste Generation	FY2017-18 Actual	FY2018-19 Actual	FY2019-20 Actual	FY2020-21 Actual	FY2021-22 Goal	FY2021-22 Current
<b>Residential Waste Diversion (city serviced accounts)</b>	36.77%	37.47%	40.38%	41.96%	41.07%	38.60%
<b>Community Diversion Rate</b>	*	*	*	*	*	*

\*As prescribed in the Austin Resource Recovery Master Plan, the Department will conduct a detailed waste assessment study every five years to determine progress toward our Zero Waste goal. The first such study was published in 2015 and is titled Austin's 2015 Community Diversion Study. The study focused on estimating diversion from both ARR-serviced properties and commercial properties. Commercial properties include retail businesses, food service establishments, professional offices, industrial properties, institutional facilities, government facilities, and multifamily properties five units and larger. According to Austin's 2015 Community Diversion Study, Residential Waste Diversion Rate (city serviced accounts) represents approximately 15% and the Community Diversion Rate (accounts serviced by private waste haulers) represents approximately 85% of the total citywide wastage.

### Residential Waste Diversion (city serviced accounts)



Category of Waste Generation	CY 2018	CY 2019	CY 2020
<b>Commercial Tons Landfilled**</b>	1,079,312	1,401,619	1,359,207
<b>Commercial Tons Recycled**</b>	402,292	470,786	435,875
<b>Commercial Organics Tons**</b>	80,906	102,215	81,436

\*\* Numbers reported here are compiled from self-reported data submitted by licensed private waste haulers via semi-annual tonnage reports required under Section 15-6-3 of the City Code on a calendar year basis and as such, ARR does not attest to the accuracy of these amounts. These numbers reflect data from 100-200 licensed haulers (number of haulers varies over time), and include haulers servicing dumpsters, roll-offs, construction and demolition debris, landscaping debris, and metal scrap. These numbers do not reflect all data sources included in Austin's 2015 Community Diversion Study.

**Zero Waste Advisory Commission Meeting - February 2022**  
**Single Stream Recycling Statistical Report**  
**FY22: October thru February**  
**Texas Disposal Systems (TDS) and Balcones Resources, Inc. (BRI)**

Month and Year	Contractor	Tons Delivered	Contractor Payments				Net Value to the City	Landfill Cost Avoidance	
			Revenue	Processing Cost	Net Value	Net Amount Due/(Owed) *	\$ per ton value	Cost Per Ton	Total
October 14 2021	TDS	1,008.56	\$95,968	\$91,275	\$4,693	\$4,693	\$4.65	\$23.89	\$24,094
	BRI	1,286.17	\$86,775	\$101,607	(\$14,833)	(\$14,833)	(\$11.53)	\$23.89	\$30,727
	<b>Total</b>	2,294.73	\$182,743	\$192,882	(\$10,139)	(\$10,139)			\$54,821
October 31 2021	TDS	1,002.72	\$24,782	\$50,136	(\$25,354)	(\$25,354)	(\$25.28)	\$23.89	\$23,955
	BRI	1,494.60	\$235,970	\$146,470	\$89,500	\$67,125	\$44.91	\$23.89	\$35,706
	<b>Total</b>	2,497.32	\$260,752	\$196,606	\$64,146	\$41,771			\$59,661
November 2021	TDS	2,549.49	\$58,468	\$127,475	(\$69,007)	(\$69,007)	(\$27.07)	\$23.89	\$60,907
	BRI	2,538.05	\$367,601	\$248,729	\$118,872	\$89,154	\$35.13	\$23.89	\$60,634
	<b>Total</b>	5,087.54	\$426,068	\$376,203	\$49,865	\$20,147			\$121,541
December 2021	TDS	2,058.14	\$42,423	\$102,907	(\$60,484)	(\$60,484)	(\$29.39)	\$23.89	\$49,169
	BRI	3,347.23	\$444,099	\$328,028	\$116,071	\$87,053	\$26.01	\$23.89	\$79,965
	<b>Total</b>	5,405.37	\$486,522	\$430,935	\$55,587	\$26,570			\$129,134
January 2022	TDS	3,044.60	\$61,285	\$152,230	(\$90,945)	(\$90,945)	(\$29.87)	\$23.89	\$72,735
	BRI	1,990.02	\$268,018	\$195,022	\$72,996	\$54,747	\$27.51	\$23.89	\$47,542
	<b>Total</b>	5,034.62	\$329,303	\$347,252	(\$17,949)	(\$36,198)			\$120,277
February 2022	TDS	1,977.64	\$39,238	\$98,882	(\$59,644)	(\$59,644)	(\$30.16)	\$23.89	\$47,246
	BRI	2,440.61	\$344,478	\$239,180	\$105,298	\$78,973	\$32.36	\$23.89	\$58,306
	<b>Total</b>	4,418.25	\$383,716	\$338,062	\$45,654	\$19,329			\$105,552
<b>FY22 Totals</b>		<b>24,737.83</b>	<b>\$2,069,104</b>	<b>\$1,881,941</b>	<b>\$187,164</b>	<b>\$61,480</b>			<b>\$590,987</b>

\* Net /Due(Owed) for TDS = (Revenue % X Value of Material) - Processing Cost

\* Net /Due(Owed) for Balcones = Net Value of Material = Gross Value of Material - Processing Cost  
then Net Value of Material X Revenue %