

Progress Update on the New AISD Middle School

RMMA Plan Implementation Advisory Commission

April 12, 2022

Key Information

- LPA, project architect, worked with Austin ISD, Catellus and the City of Austin to create a campus that would honor the aviation history of Mueller with a sustainable, next generation educational design approach
- A Campus Architectural Team (CAT) was formed in 2019, which included district staff, community members and Northeast Austin families; 16 CAT meetings and 3 community meetings were held providing guidance to the project team as they designed the facility
- Features include: gymnasium, cafeteria, community room, track and football field, courtyards and collaborative spaces, bike friendly urban edges, on-site parking, and tennis courts
- Facility is 130,000 square feet and will serve 800 learners and doubles as a community hub after hours
- Spaces will cater to different learning modalities by allowing the ability to teach outside, in collaborative break-out spaces, in small group rooms, and in technology rich expandable spaces
- Project is ambitious environmentally targeting LEED Gold status along with incorporating AEGB - 4star Sustainable Strategies and targeting an Energy Use Intensity reduction of 60%
- Anticipated Opening Date: Fall 2023



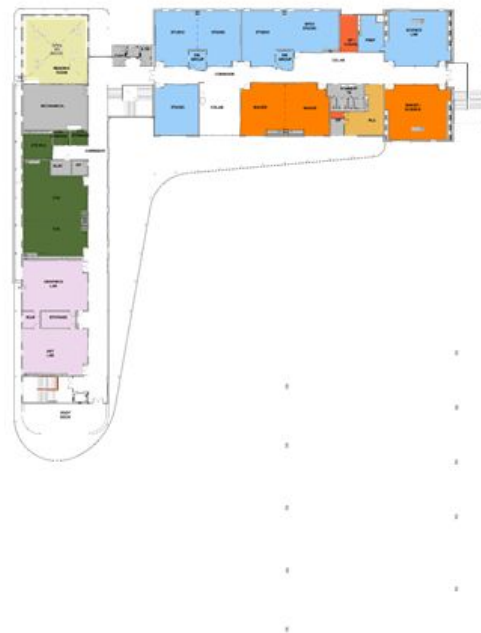




Ground Level



Second/Third Level













Current Status





Planning Milestones

- **February - March 2022:**
 - Met with Campus Advisory Councils to learn their particular hopes, ideas and concerns
 - Created a public survey to gather input from the school communities in the area that will be affected by decisions about which students it will serve and what programming will be offered
 - Hosted virtual regional community conversations and reached out to families through a district led phone bank
- **April - May 2022:**
 - Finalize goals and develop enrollment options
 - Facilitate community conversations to evaluate enrollment options based on goals
 - Begin school name discussions
- **June 2022:**
 - Select principal
 - Selection of enrollment model and programming
 - Identify branding, colors, mascot





Planned Community Spaces

- Gymnasium
- Cafeteria
- Community room
- Library
- Classrooms
- Track and athletic field
- Tennis courts



Contact Information

Shashank Singh

Project Manager

singh.shashank@austinisd.org

Jeremy Striffler

Director of Real Estate

jeremy.striffler@austinisd.org

