



Briefing on the terms of the Park Operations and Maintenance Agreement with The Trail Foundation for portions of the Town Lake Metropolitan Park

Parks and Recreation Board

Parks and Recreation Department, City of Austin
Christine Chute Canul, Partnership Manager, PARD
Heidi Anderson, CEO, The Trail Foundation

May 23, 2022



The Trail
Foundation



Council Resolution - 20200312-041



BE IT RESOLVED BY THE CITY COUNCIL OF THE CITY OF AUSTIN:

The City Council expresses support for the concept of parkland agreements between nonprofit organizations and PARD if the agreements further the mission And vision of the department with regard to non-enterprise fund public parks and trails in an effective, efficient, and inclusive manner.

BE IT RESOLVED:

The City Council directs the City Manager to work with parks nonprofit partners that have established relationships with PARD, including but not limited to The Trail Foundation and the Pease Park Conservancy, to create opportunities for partnership agreements that benefit the community, and to outline roles and responsibilities between those groups and PARD.



The Trail Foundation (TTF)



A 501(c)3 dedicated to protecting, enhancing, and connecting the Butler Hike-and-Bike Trail at Lady Bird Lake *for the benefit of all.*

TTF/City of Austin Partnership Timeline

- **1971** – Public-private civic effort formed led by the Citizen's Committee for a More Beautiful Town Lake
- **2003** – Town Lake Trail Foundation (now The Trail Foundation) was formed to continue the work of the Citizen's Committee and ensure that the Trail remains one of Austin's outstanding places
- **2014** – Boardwalk opens, completes the 10+ mile loop of the Ann and Roy Butler Trail
- **2015** – TTF adopted the Butler Trail at Lady Bird Lake Urban Forestry and Natural Areas Management Guidelines, developed by Siglo Group in consultation with TTF, Austin Parks and Recreation (PARD) and the City of Austin Watershed Protection Department (WPD).
- **2018** – PARD and TTF begin discussions to formalize partnership
- **2020** – Formal process begins to enter into phased Parkland Operations & Maintenance Agreement (POMA) with PARD



The Trail
Foundation



The Trail Foundation (TTF)

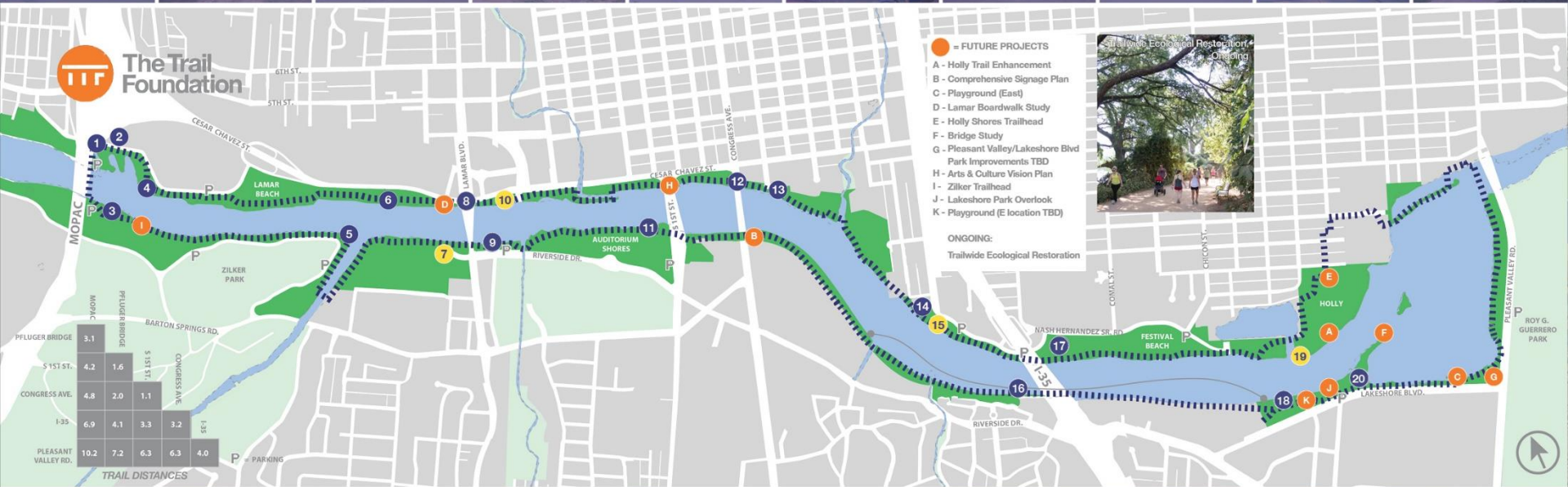
A 501(c)3 dedicated to protecting, enhancing, and connecting the Butler Hike-and-Bike Trail at Lady Bird Lake *for the benefit of all.*



The Trail
Foundation



Ann and Roy Butler Hike and Bike Trail TTF Capital Projects



TTF Investment & Public Benefit



Since 2003, TTF has invested more than

\$19,830,000

on the Butler Trail and the Town Lake Metro Park, including infrastructure projects, ecological restoration, and maintenance.

(Pre-pandemic (2019) Annual TTF Investment: \$3,319,731)

Note: TTF will **not** receive any funding from the City as a part of the POMA



Volunteer Impact Since January 2020:

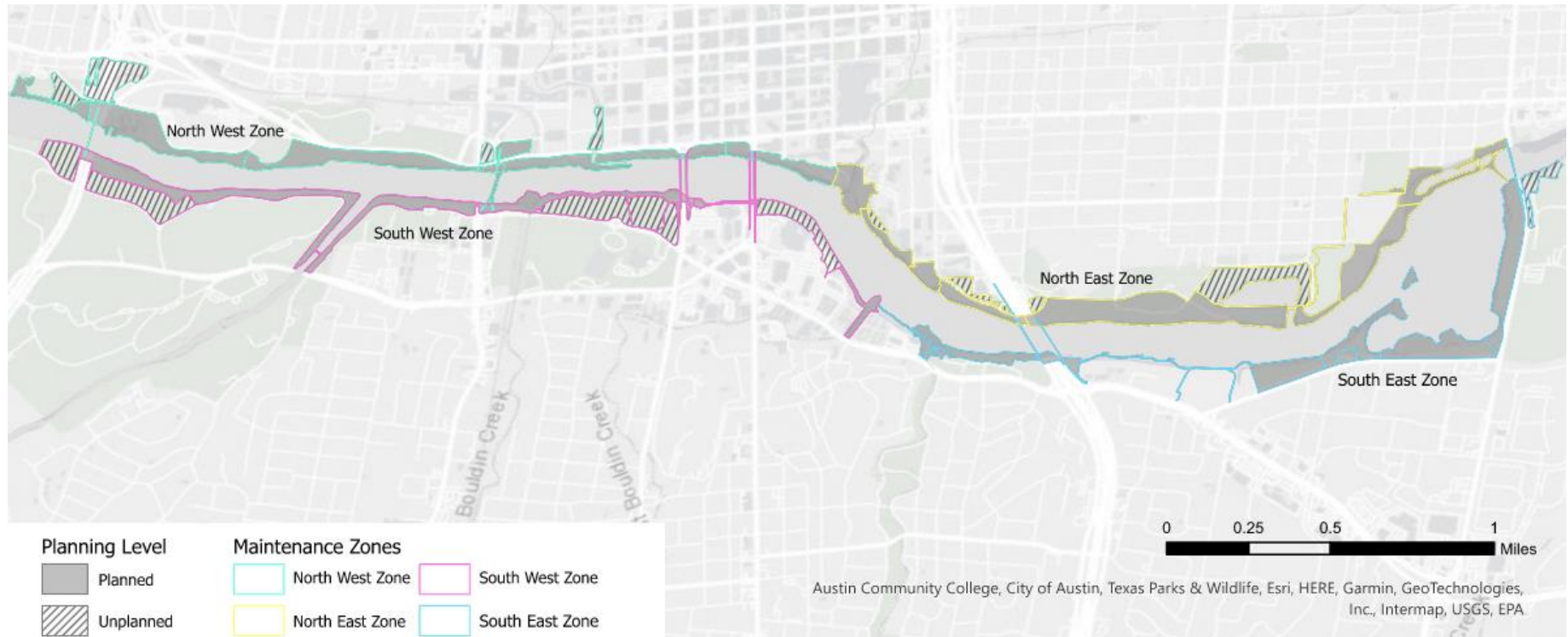
- 191 Volunteer Events
- 2,802 Volunteers
- 12,495 Native Plants and Trees Planted
- 544 Yards of Mulch/compost Spread
- 9.8 Acres of Wildflowers Planted
- 15,625 Pounds of Trash Removed



The Trail
Foundation



Proposed Partnership Phasing



ZONE	YEAR									
	1	2	3	4	5	6	7	8	9	10
Southeast	Yellow	Yellow	Green	Green	Green	Blue	Blue	Blue	Blue	Blue
Northeast	Yellow	Yellow	Yellow	Green	Green	Green	Blue	Blue	Blue	Blue
Northwest	Yellow	Yellow	Yellow	Yellow	Yellow	Green	Green	Green	Blue	Blue
Southwest	Yellow	Yellow	Yellow	Yellow	Yellow	Yellow	Green	Green	Green	Blue
		Yellow	Phase 1		Green	Phase 2		Blue	Final Phase	



The Trail Foundation



Roles & Responsibilities



Below chart shows 2 examples of full roles and responsibilities by phase and asset as defined by party in the O&M Plan.

TTF	PARD	WPD	Public Works	Private Land Owner	3rd Party
-----	------	-----	--------------	--------------------	-----------

TASK	Phase 1		Phase 2		Phase 3		Volunteer (Y/N)	ASSUMPTIONS
	Primary Respon.	Secondary Respon.	Primary Respon.	Secondary Respon.	Primary Respon.	Secondary Respon.		
Gathering Areas								
PARD Owned/Managed							Y	TTF will continue to act as the primary responsible party for TTF-built projects. In the Phase 3, TTF will also act as primary on all gathering areas.
TTF Built							Y	
Public Works Managed							N	
3rd Party Built / Managed							N	
Privately Owned/Managed							N	
Trail Edge Vegetation								
PARD Owned/Managed							Y	TTF will provide support to PARD for vegetation management with increasing support. TTF will act as primary responsible party for all Trail edge vegetation in Phase 3. In any areas where TTF installs new trail, TTF will become the primary responsible party starting in Phase 1.
TTF Built							Y	
3rd Party Built / Managed							N	
Public Works Managed							Y	
Privately Owned/ Managed							N	



The Trail Foundation



POMA Public Process



TTF coordinates regular/ongoing community engagement outreach directly with PARD's Communications & Engagement Unit and maintains consistency with the COA Public Participation Principles.



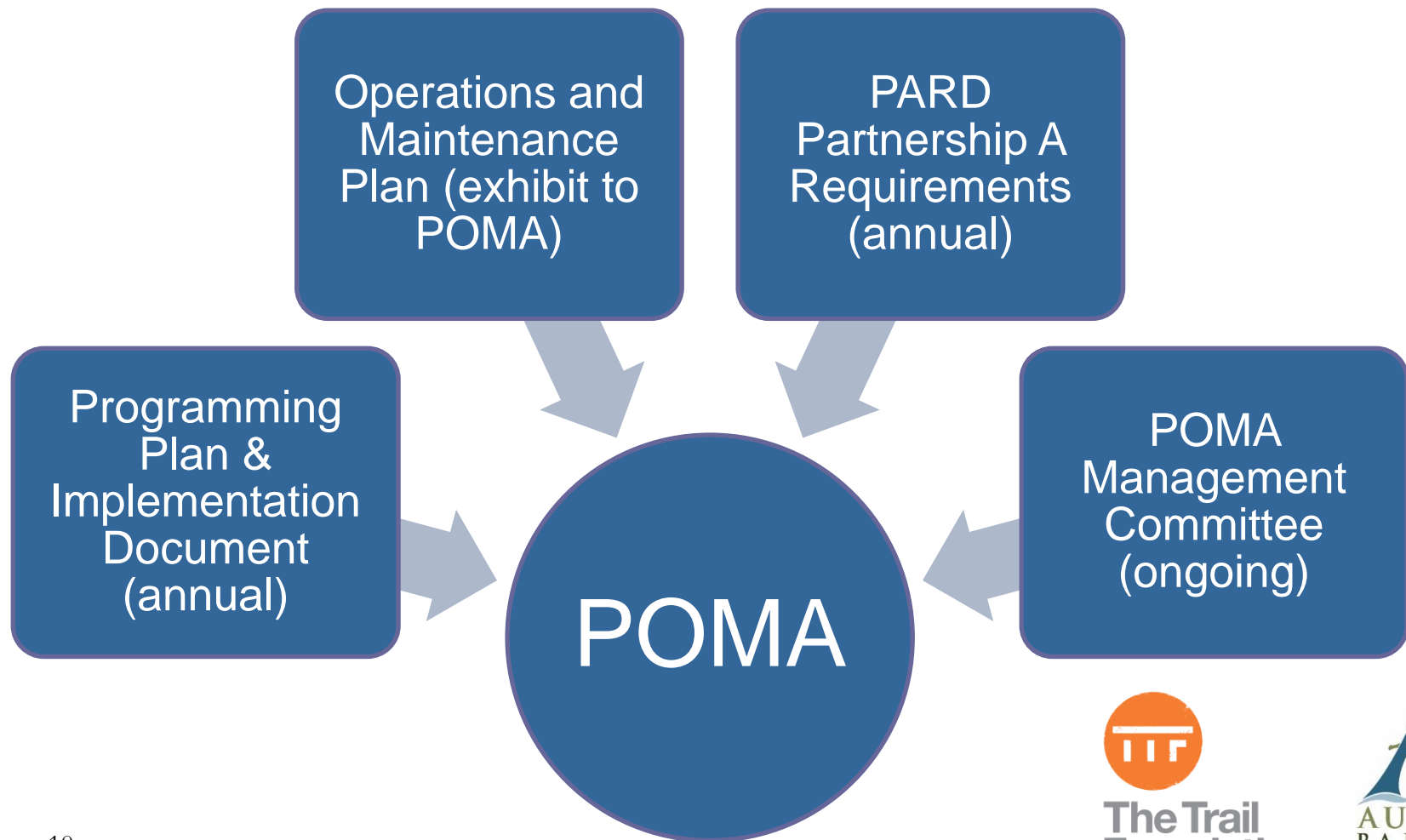
- Community engagement included **interviews with 100** residents, business and community leaders, and representatives who shared their perspectives, experiences, and insights with the panel (hosted at City Hall).
- The panel held a final presentation for the community at the Austin Central Library and recommended formalizing the public/private partnership between the City and TTF, to allow each entity to build on the strengths of the other.



The Trail
Foundation



Park Operations and Maintenance Agreement (POMA)



Outline Partnership Agreement Terms



- Meet PARD Partnership A Criteria
- Delineate Roles and Responsibilities
- COA and TTF Management Committee (PARD, WPD, AIPP and TTF)
- PARD Director Annually Approves TTF Programming Plan (Council the initial two years)
- Annual Implementation Document
- Annual Reporting Requirements
- Annual Agreement Compliance Review
- 25-year initial term w/ up to five (5), 5-year extensions



The Trail
Foundation





POMA Terms

Operations & Maintenance

- **Concessions**
 - Adhere to City Code
- **Signage & Donor Recognition**
 - Follows City Code & PARD policies
- **Communication**
 - Regular Meetings
 - Public communication remains through 311
- **O&M Plan & Annual Implementation Document**
 - 10-year phasing plan with annual agreed upon implementation
- **Future Improvements**
 - Follows City Code
- **Financials**
 - Reserve Fund
 - Park Operations Fund
 - Capital Repair Fund



The Trail
Foundation





POMA Terms

Programming and Events Highlights

- TTF will **never close** The Butler Trail
- Community Events
- Community Programming
 - Free and open to the public
- Environmental Stewardship
- Partners & Neighborhood/Community events
- Initial two years of POMA Annual Programming Plans to Council



The Trail
Foundation



50th Anniversary & Future POMA Impact



- 2022 Marks the Trail's 50th Anniversary
- Began as a vision of Lady Bird Johnson, Ann Butler, and the Town Lake Beautification Committee
- TTF Continues that Vision

A long-term, formal partnership between the City & TTF increases the resources and capacity available to maintain and enhance this iconic and beloved green space to the level it deserves.



**The Trail
Foundation**



Thank You!

Questions or Comments

