

# ATX Walk Bike Roll

## Project Update

Urban Transportation Commission— July 5th, 2022



atx  
**Walk Bike Roll**  
*Urban Trails | Sidewalks | Bikeways Plans*



# Agenda

- ATX Walk Bike Roll Overview
  - Equity Focus
- What We've Learned So Far
- How We're Moving Forward





# Goals of ATX Walk Bike Roll

- Update three modal plans that identify where to build sidewalks and crossings, urban trails, and bikeways
- Embed social and racial equity within the programs
- Add maintenance into plans and update project prioritization
- Work with partners to create a safer, more connected network
- Identify ways to build high quality bicycle and pedestrian pathways in less time





# ATX Walk Bike Roll Principles & Values

- **Communities:** Travel options affect the way we live
- **Equity and Diversity** – Consider the needs of every community member – all ages, abilities, races, cultures, and classes
- **Mobility and Accessibility** – Serve all ages and abilities, so that everyone has a safe way to travel
- **Health and Environment** – Provide travel options that benefit physical, social, mental, and environmental health
- **Connections** – Connect people to place
- **Transportation and Housing Affordability** – Provide a low-cost way to travel with easier access to transit





# Timeline

- **Phase 1: Winter 2021 – Summer 2021**
  - Equity Framework; Conditions Analysis; Outreach Planning
  - **Outreach goal:** introduce project, discuss community needs and priorities to shape guiding values of ATXWBR.
- **Phase 2: Fall 2021 – Fall 2022**
  - Programs & Policies; Scenario Evaluation; Project Prioritization; Buildout Plans
  - **Outreach goal:** determine where we build, how we prioritize projects, and what we base decisions on.
- **Phase 3: Fall 2022 – Spring 2023**
  - Plan Document Development and Revisions
  - **Outreach goal:** review and discuss the plans and priorities – did we get it right?
- **Anticipated Adoption: Spring / Summer 2023**





# Equity Focus

Equity is achieved when race no longer predicts a person's quality of life outcomes in our community.

**The City of Austin recognizes that past plans and investments have not met the needs of all Austinites or have actively harmed communities - especially low-income communities and communities of color. This furthered inequalities in transportation, health, safety, housing, and income.**





# Equitable Outreach Goals

- Engage communities who have been underrepresented in past planning efforts, such as communities of color and low-income communities so their input meaningfully shapes the project
- Prioritize engagement with historically underrepresented and underserved stakeholders by collaborating with key community organizations with access and credibility to these populations
- Participant demographics exceed the racial/ethnic and income demographic makeup of the city





# What We Asked (Phase 1)

- Preferences and perceptions of walking biking and rolling in Austin
- What kinds of trips are made without a car, how often, and how far
- What factors influence whether people choose to walk, bike or roll
- How can the City better serve the needs of people who walk, bike, and roll and / or who would like to do this more
- Where barriers to access exist



# What We Learned

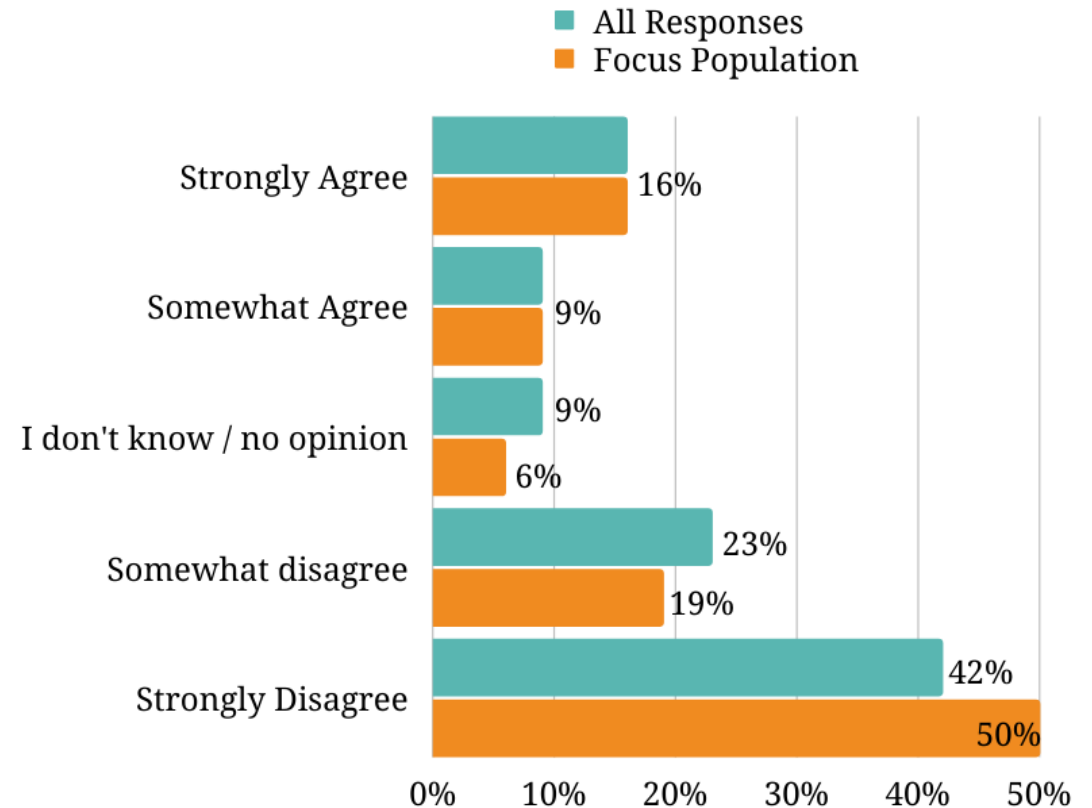
## Respondent's level of agreement with the statement:

"In Austin, people of all races share equal access to safe and comfortable places to walk, bike, or roll"



**Focus populations** are respondents who either:

- Reported an annual income below \$50,000, or
- Reported a race /ethnicity other than non-Hispanic White



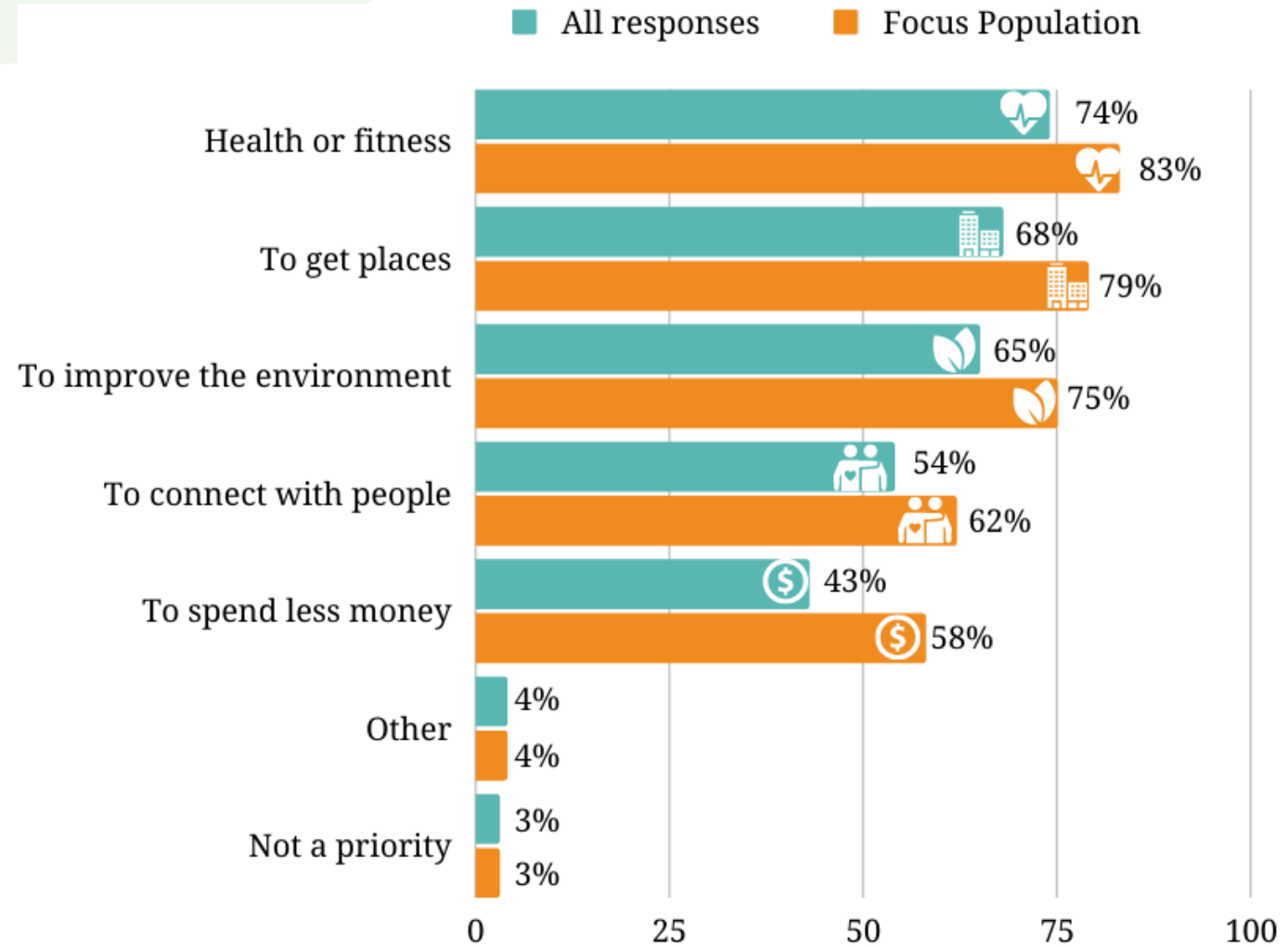
# What We Learned

Why respondents want safe and comfortable places to walk, bike, or roll in their community



**Focus populations** are respondents who either:

- Reported an annual income below \$50,000, or
- Reported a race /ethnicity other than non-Hispanic White



# What We Learned – Concerns Around Housing

“Saw two more homes being prepared for seeming relocation - but perhaps demolition. There seems to be at least one property on every single block which is turning into one or several gentrified homes for people with much higher income and other privileges than those they have displaced. The cars I see are getting more expensive and of luxury brands. **It hurts to be so aware that this is the active and ongoing displacement driving out older, longtime, nonwhite, and/or low-income renters and owners.** I feel robbed of my enjoyment and helpless to regain it. It's very demoralizing and disincentivizing.”

**“The City needs to invest more resources in listening to residents of color and implementing policies that vulnerable populations want.** I want to see sidewalk and bike lane improvements that are coupled with “right of return” and other housing policies that keep people in their homes and prevent gentrification.”



# How We Are Moving Forward



# Equitable Transportation – Policy Support

Plan feedback has brought focus to the need for holistic policy support to achieve equitable and sustainable transportation outcomes consistent with City goals and Council Strategic Direction

- **Anti-displacement and affordability**
- Integration with public transportation
- Evaluate modal and equity bias in existing programs/policies (e.g. Lighting, Transportation User Fee, Maintenance)
- Affordable E-bike access, bike share expansion
- Secure bicycle parking for renters (particularly older apartments)
- Supportive land use policies & better connectivity
- Tree and native planting programs



# Urban Trails - Policy

- Shared Use Corridors – Best Practices



# Urban Trails - Maintenance

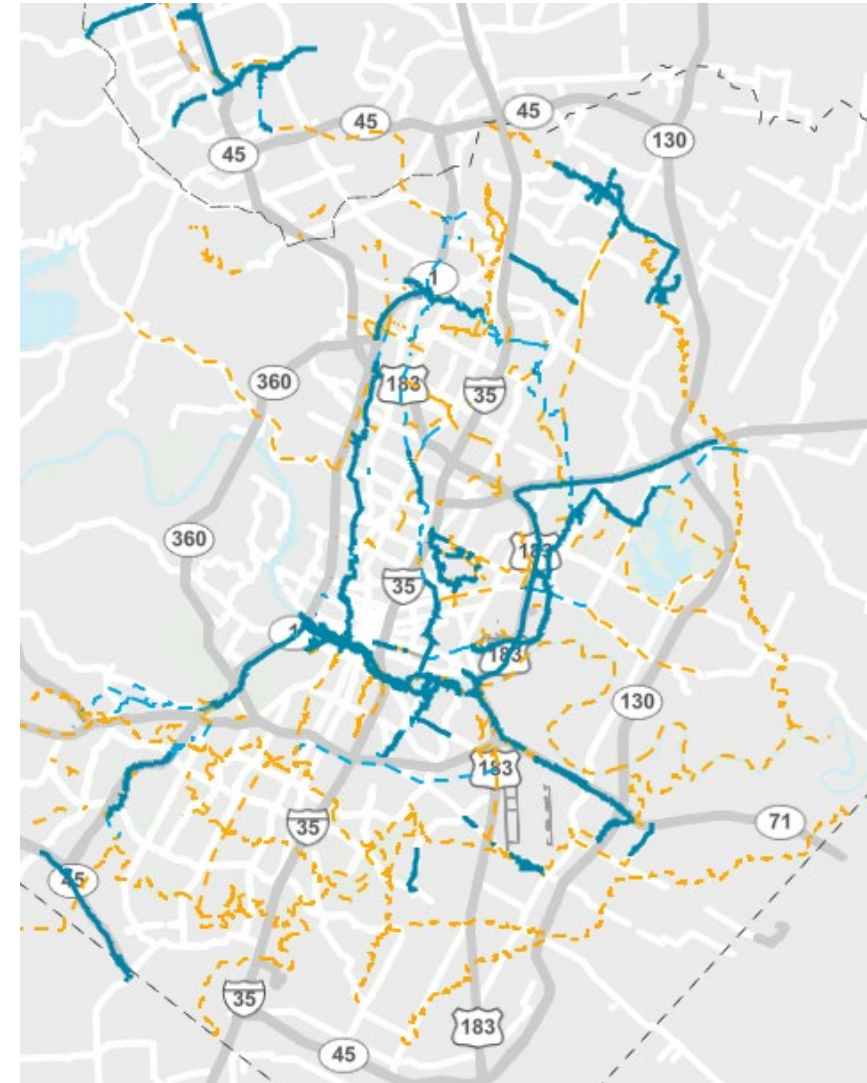
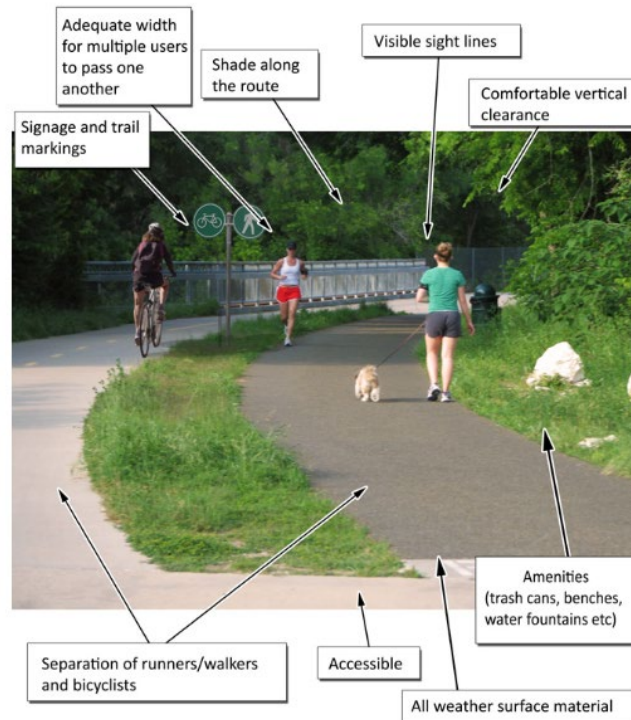
- Maintenance and Management Considerations
  - Maintenance Standards/Service Plans for Trails
  - Formalize and expand non-profit partnerships
  - Establish a comprehensive trail count program
  - Expand the City of Austin Park Ranger program
  - Expand placemaking or activation strategies



# Urban Trails – Network Development

- Network Development
  - Public Input
  - Feasibility Fieldwork
  - Design Standards

*Current Urban Trail Network (right) and Design Standards (below)*



# Urban Trails – Next Steps

- Scenario Development
  - Connecting to:
    - Nature
    - Neighborhood destinations
    - City-wide destinations
- Challenge
  - How do we prioritize building in historically underserved communities while mitigating for negative unintended consequences?
- Need
  - Cross-departmental resources, partnership with outside agencies



# Bikeways - Network Planning

- We are currently adding new streets to the proposed all ages and abilities bicycle network
- Feedback from the ATXWBR input map and prior comments are being evaluated for possible network expansion



# Bikeway – Scenario Development

- Three infrastructure prioritization scenarios will be evaluated
- Bikeways is using the same scenario themes as Urban Trails
- Scenario themes: *Connecting to...*
  - *Nature*
  - *Neighborhood Destinations*
  - *City-wide Destinations*
- Priorities in each scenario will be based on a set of prioritization factors



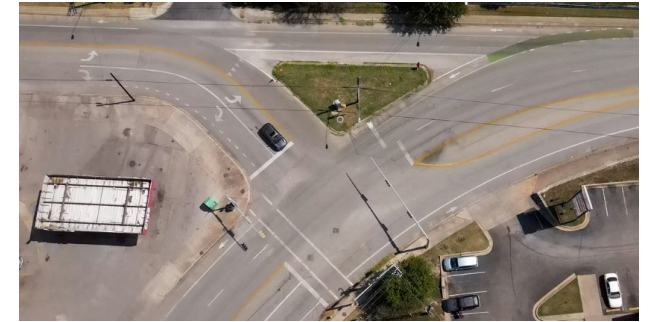
# Bikeway – Addressing Interconnected Issues

- Affordability
- Climate and environment
- Access to nature / parks and integrate nature into the city
- Health
- Time competitive mobility choices and modal integration



# Sidewalk - Comprehensive Network Plan

- **Complete Pedestrian Network Design:** City wide plan for pedestrian needs that includes sidewalks, safer crossings, and healthy / shared streets
- **Incorporate green infrastructure:** design alternatives and partnerships to include more trees and rain gardens and reduce impervious cover.





# Sidewalk – focus areas

- **Shared Streets Pilot Program:** implementation and evaluation
- **Pedestrian crossings:** gap analysis and prioritization process
- **Network Coverage and Access:** development of new analysis tools and metrics
- **Sidewalk System Alternative scenarios**
- **Update ADA Transition Plan for Sidewalks**



# Ongoing and Upcoming Tasks

- **Phase 2: Fall 2021 – Fall 2022**
  - Programs & Policies; Scenario Evaluation; Project Prioritization; Buildout Plans
  - **Outreach goal:** determine where we build, how we prioritize projects, and what we base decisions on.
- **Phase 3: Fall 2022 – Spring 2023**
  - Plan Document Development and Revisions
  - **Outreach goal:** review and discuss the plans and priorities – did we get it right?
- **Anticipated Adoption: Spring / Summer 2023**



# Feedback

For additional information and to review the Phase 1 Outreach Summary, visit our website at [AustinTexas.gov/atxwbr](https://austintexas.gov/atxwbr)

