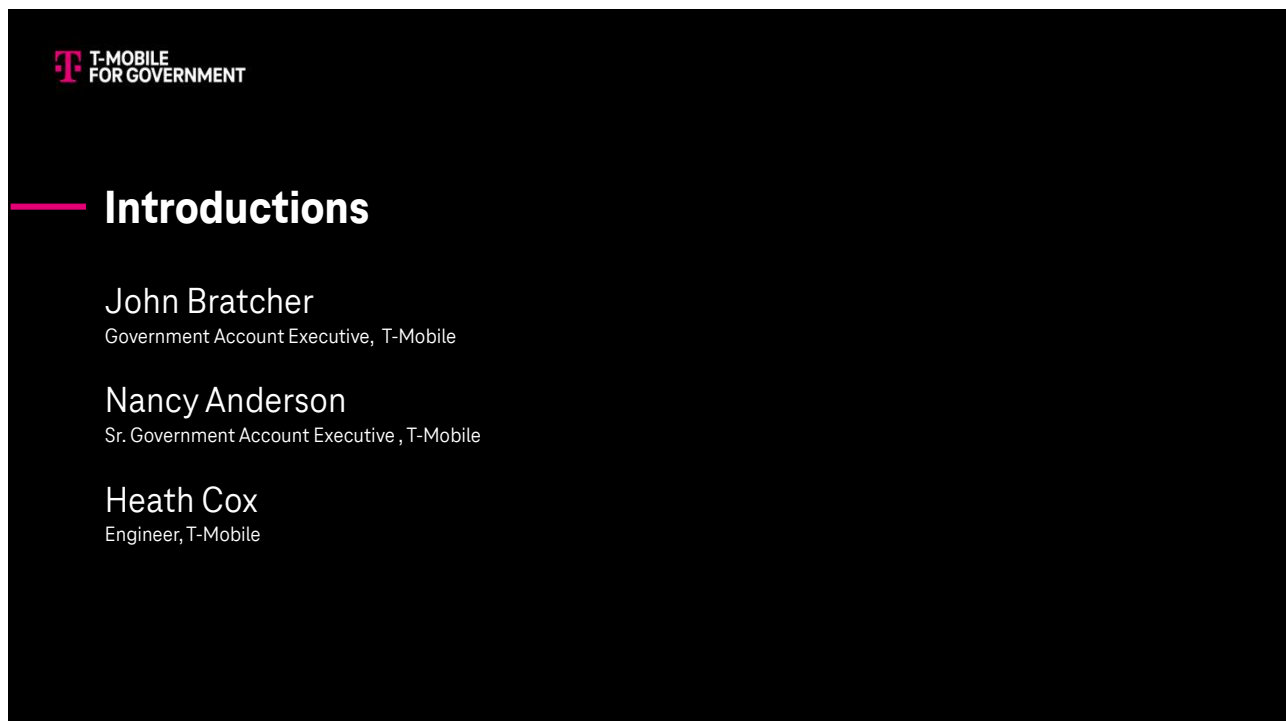




1



2

Spectrum is the fuel that drives Enterprise 5G capabilities

High-band mmWave (>24 GHz)

High capacity, ultrafast, but limited range.

Used for dense environments and private networking.

Mid Band (1-6 GHz)

Enhanced 5G speeds for metro areas.

Critical for high bandwidth applications, both fixed and mobile.

Low band (<1 GHz)

Coverage for wide open spaces. **Important for high mobility field applications and IoT sensing.**



A great 5G network requires ALL spectrum bands



Combination of T-Mobile & Sprint spectrum in progress. Capable device required; coverage not available in some areas.

3



Why 5G spectrum matters

Each spectrum frequency band has its own strengths and limitations.

Most organizations require a combination to meet their performance requirements.

Low-band

Lower speed but wide coverage, can pass through buildings

Mid-band

A balance between coverage and capacity

High-band (mmWave)

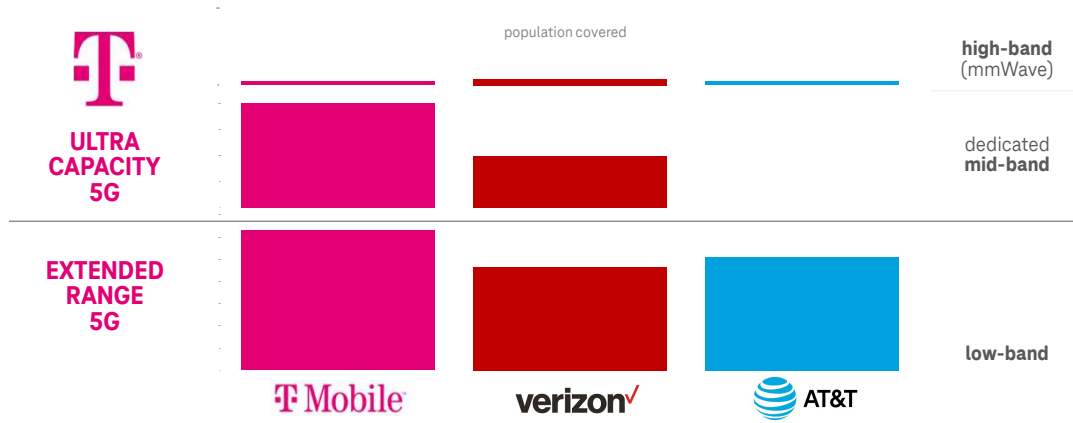
High-speed, disrupted by barriers, narrow coverage



4

4

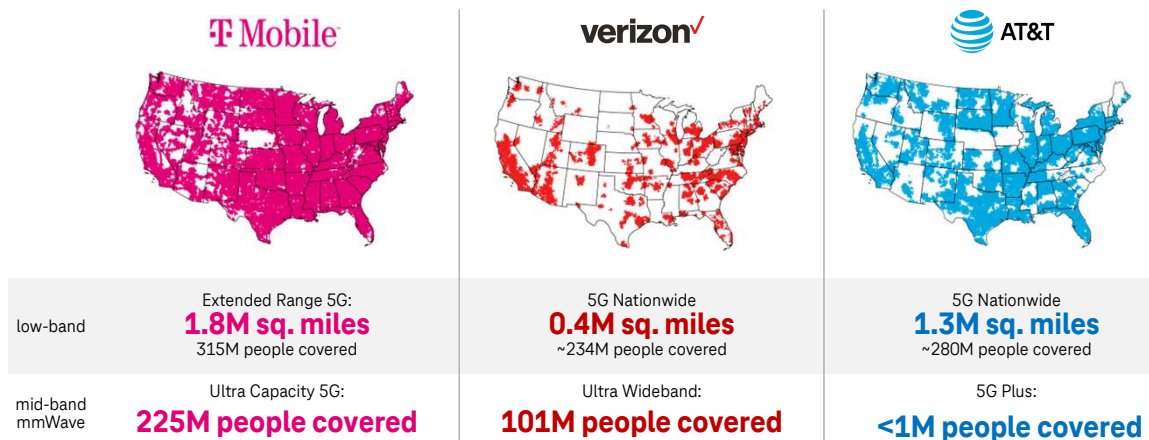
We lead the industry in deploying multi-layer 5G.



T-MOBILE
FOR GOVERNMENT

5

We have a clear and demonstrable lead in 5G.



T-MOBILE
FOR GOVERNMENT

6

We set some big goals for our 5G network, and are exceeding them.

estimates for the future of our 5G network

EXTENDED RANGE 5G

310M
~~300M~~ people
covered by the
end of 2021

97% of Americans
covered by the
end of 2022

Bringing 5G to
every corner of
this country

ULTRA CAPACITY 5G

210M
~~200M~~ people
covered by the
end of 2021

Over 250M
covered by the
end of 2022

90% of Americans
covered by the
end of 2023

Mid-band and Millimeter Wave



Sites

Combined
LTE + 5G

85K ending
~~80K~~ sites

Thousands of new
coverage sites

50K ending
Small cells

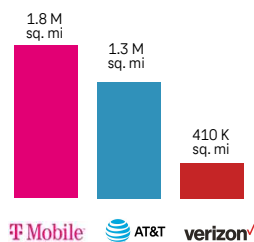


7

Our Extended Range 5G is the largest in the nation.

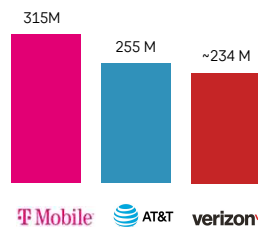
Area covered

for businesses with
highly mobile, field workforces



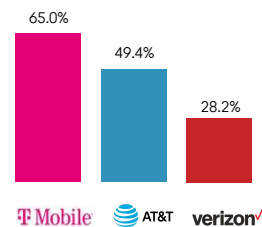
Population covered

for businesses with
large, dispersed workforces



5G availability

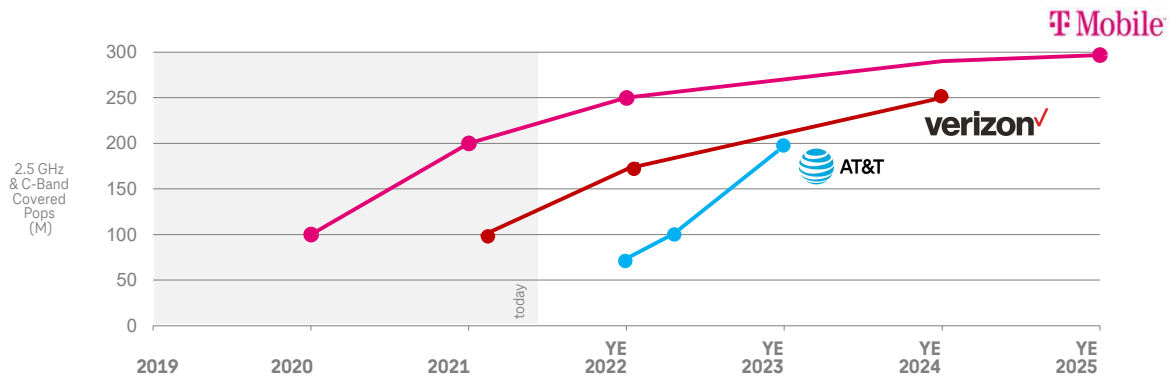
when you need 5G to be
more than a fleeting experience



Capable device required for 5G; coverage not available in some areas. Some uses may require certain plan or feature; see [T-Mobile.com](https://www.t-mobile.com). 5G Availability: Based on analysis by Ookla® of Speedtest Intelligence® data as reported on www.speedtest.net/global-index/united-states#market-analysis for Q1 2022. Ookla trademarks used under license and reprinted with permission.

8

We will continue to have a material lead in 5G coverage and speed for years to come.



T-MOBILE
FOR GOVERNMENT

Source: Future-looking estimates presented by each company during their post C-Band auction and subsequent analyst events.

9

T-MOBILE
FOR GOVERNMENT

5G network leadership

We built America's largest and fastest 5G network to give your agency an advantage today.


- **5G Ready now.** This isn't 5G you need to wait for, your agency can benefit from the network that years ahead of the competition.
- Our **Extended Range 5G** extends to rural areas covering 315 million Americans, 1.8M square miles.
- Our **Ultra Capacity 5G** covers 225 million Americans with even faster 5G in more places than anyone else.

Capable device required for 5G; coverage not available in some areas. Some uses may require certain plan or feature; see [T-Mobile.com](https://www.t-mobile.com). Extended Range 5G includes low-band 5G signals. Ultra Capacity 5G includes dedicated mid- and/or high-band 5G signals. **Fastest:** Based on median, overall combined 5G speeds according to analysis by Ookla® of Speedtest Intelligence® data 5G download speeds for Q1 2022. Ookla trademarks used under license and reprinted with permission.

10



11



Traditional solutions don't compare

Leverage T-Mobile Business Internet to avoid the challenges of conventional connectivity solutions.

Challenge	Most traditional ISPs	T-Mobile Business Internet
Geographic availability	Different providers serving different areas	Connectivity solutions with nationwide coverage
Procurement	Multiple regional vendors for businesses to manage	Single nationwide vendor
Cost control	Various service offerings and rate plans from different carriers	Predictable costs from straightforward monthly plan
Setup	Lengthy waits for service installation appointments	Self-install options to streamline setup
Support	Varied, provider-specific configurations and disjointed support models	Consistent support model and troubleshooting via single vendor
Optimized bandwidth	Limited productive filtering for non-business apps	Productivity filter included
Portability	Need to re-provision service if location moves	Wireless equipment can move with location*

During congestion, customers on this plan may notice speeds lower than other customers due to data prioritization. Not available in all areas.

*May require eligibility check

12

12



The right options and value for your business



Plans

Options include unlimited data or tiered and pooled plans with data allowances.



Devices

Provide your own device or choose a T-Mobile 5G/LTE router that's right for your location.



Features

Self-install options, included productivity filter, and multiple plans to choose from.

13

13



Business Internet

Device options

BYOD

- Flexibility for customers to provide their own compatible router

Bundled router from T-Mobile

- Nokia or Inseego router options
- Easy setup
- Integrated 5G NR & 4G LTE
- Wi-Fi 6
- Ethernet LAN Port
- USB 3 type C, SIM slot 4FF/nano



14

14



Business Internet Plans

Flexible plans to align with your business needs		
Unlimited Data BYOD ¹ \$35	Unlimited Data with Router Included \$45	300 GB \$70
<ul style="list-style-type: none">Monthly charge per line (plus taxes, fees)Fixed Wireless Internet connectionBYOD or choose T-Mobile-provided 5G/4G LTE router <p>Features include:</p> <ul style="list-style-type: none">High-speed internet with unlimited dataNo throughput caps or throttlingProductivity filter for non-business apps²Amazing service & support from most dedicated experts in wireless	<ul style="list-style-type: none">Monthly charge per line (plus taxes, fees)Fixed Wireless Internet connectionBYOD or choose T-Mobile-provided 5G/4G LTE router <p>Features include:</p> <ul style="list-style-type: none">High-speed internet with unlimited dataNo throughput caps or throttlingAmazing service & support from most dedicated experts in wireless	<ul style="list-style-type: none">Monthly charge per line with AutoPay (plus taxes, fees)Fixed Wireless Internet connectionBYOD or choose T-Mobile-provided 5G/4G LTE router <p>Features include:</p> <ul style="list-style-type: none">300GB data allotmentCustomer chooses their overage experience:<ul style="list-style-type: none">600Kbps after allotment (for consistent monthly price), or \$2/GB (for continued high speed)Productivity filter for non-business apps²
Shared data plans:	1	25 GB Data Allowance \$45

¹ Not available in all areas; addresses ineligible for 5G Business Internet with unlimited data may be eligible for 4G LTE. MRC (plus taxes, fees); Fixed Wireless Internet connection; BYOD only; \$3.75/GB overage fee

² Productivity filter available with most Business Internet plans; see Sales Rep and T-Mobile.com/filtering for options and details.





Why edge computing?

Latency

Get real-time insights

Bandwidth

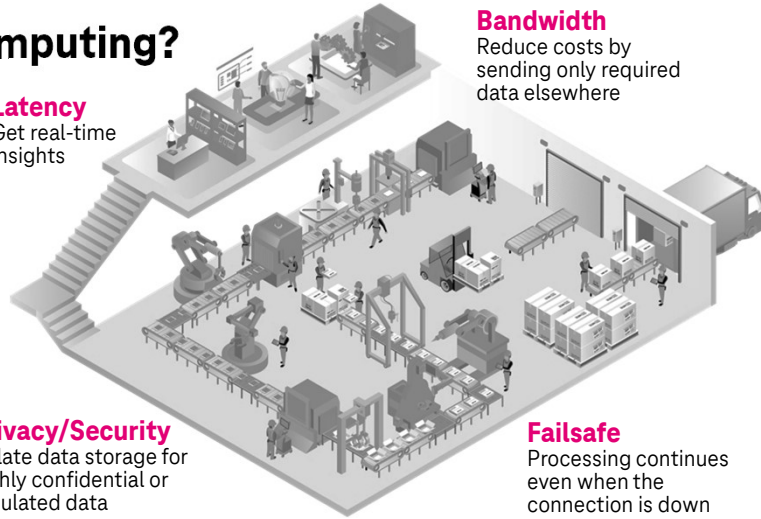
Reduce costs by sending only required data elsewhere

Privacy/Security

Isolate data storage for highly confidential or regulated data

Failsafe

Processing continues even when the connection is down



17

17



Where is edge computing?



Centralized
cloud



T-Mobile
Network Edge



On-Premise
Private Edge



On device

Decreasing latency

18

18



Many challenges are accelerating your need for new technology solutions.

- Worker shortages
- Tight margins
- Strained supply chains
- Changing citizen demands

Source: IDC Worldwide CEO Survey, January 2022

94%

Leaders that say digital transformation efforts grew in importance in their industry in 2021

19

19



Performance right-sized to government's needs

T-Mobile Public Network



Hybrid Mobile Network



Private Mobile Network



Increasing levels of performance

20

20



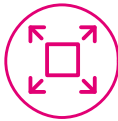
Ready Now. Our advanced 5G network.

Architecture matters. Innovation is in our DNA. Proven by our 5G network.

As the first carrier with 5G standalone New Radio (NR), we have the infrastructure that fully leverages the value of 5G.



**Enhanced
user experience**



**Simplified
operations and
service agility**



**Future-proof
network
architecture**



**Improved network
capabilities**

5G: Capable device req'd; coverage not available in some areas. Some uses may require a certain plan or feature; see T-Mobile.com.

21

21



22