

Section 11 Neighborhood Park

Mueller Commission Presentation August 9, 2022



Location of park in Mueller's newest neighborhood - Section 11



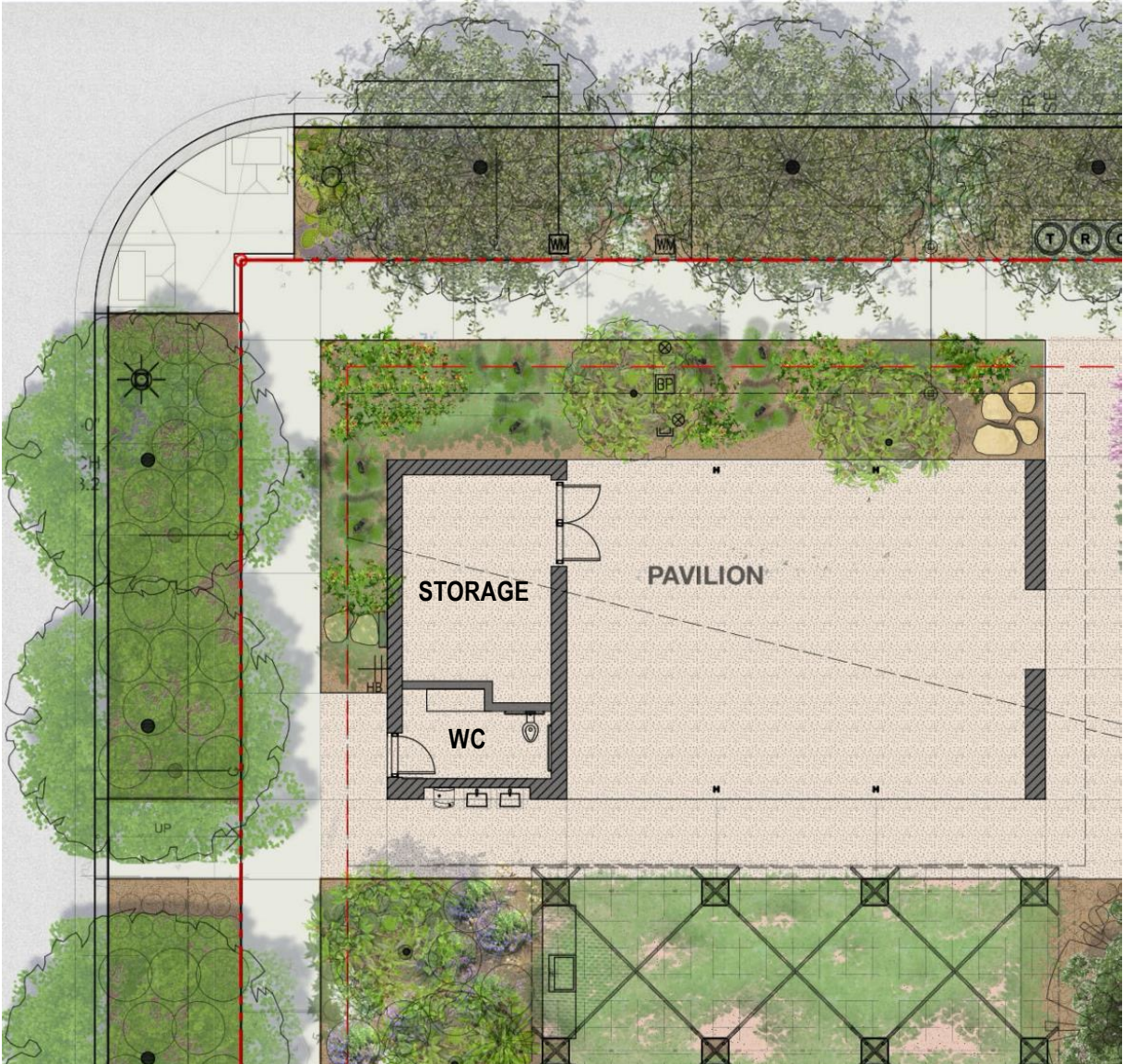
Google Map view (2022)

Site Plan





Bird's-Eye View of Park from Northwest corner looking to Southeast



Pavilion Plan



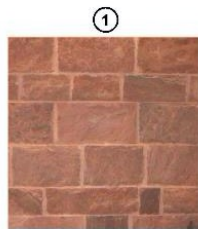
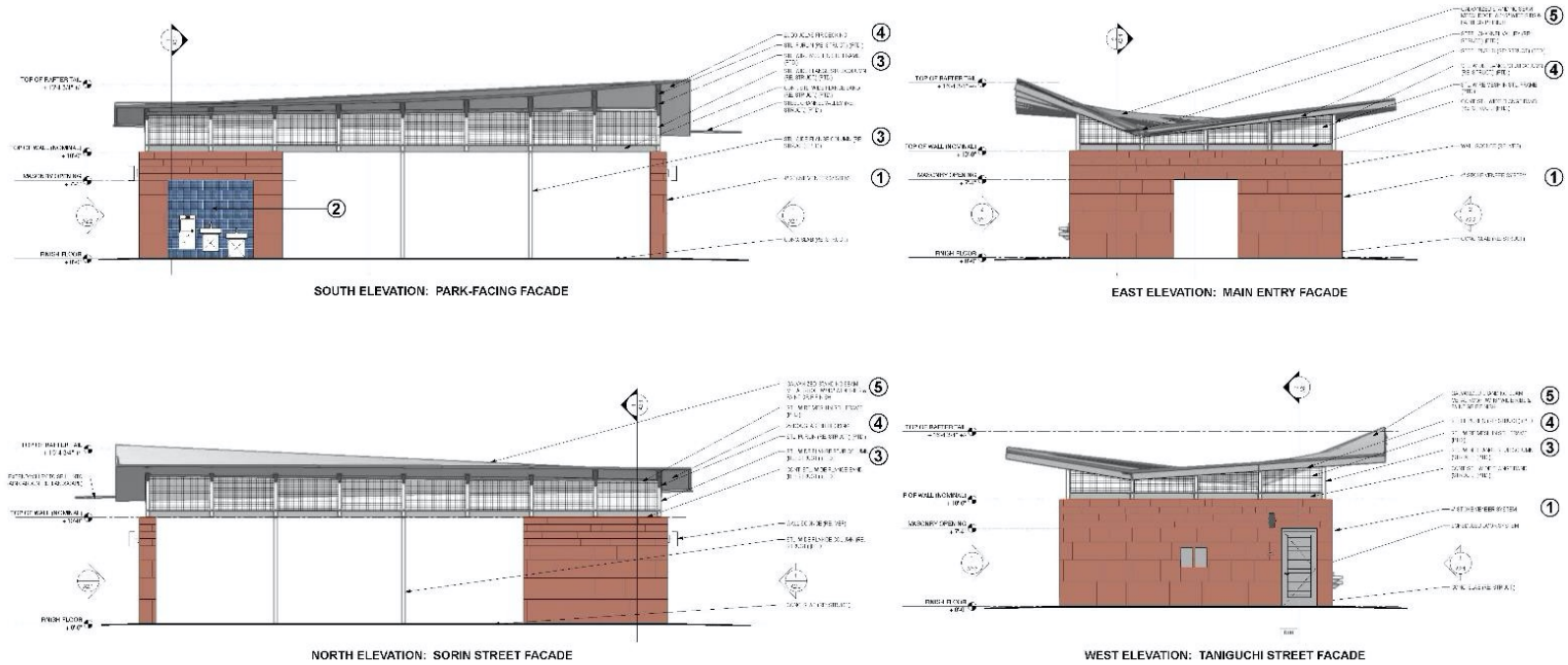
View of Dry Creek, Stacked Stone Wall, Vine Trellis-Covered Terrace and Pavilion



View from Vine Trellis-Covered Terrace to Open Lawn Area

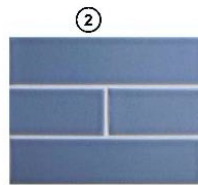


View of Chennault St Streetscape at Mid-Block Seating



EXTERIOR WALL

- Pacos Red Sandstone
- Random broken/chopped lengths
- Natural color variations
- Size: 4" thickness x random lengths and graduating heights



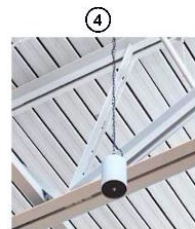
BACK OF ALCOVE WALL SURFACE

- Trikeenan Tile, Affinity Series
- Running bond
- Color: "Blue Jay"
- Size: 6" x 9"



STRUCTURAL STEEL MEMBERS

- Bands, Columns, Joists, Purlins
- Painted Gray / Silver



ROOF DECK

- 2x6 Tongue & Groove
- Douglas Fir or Pine
- Painted pale blue

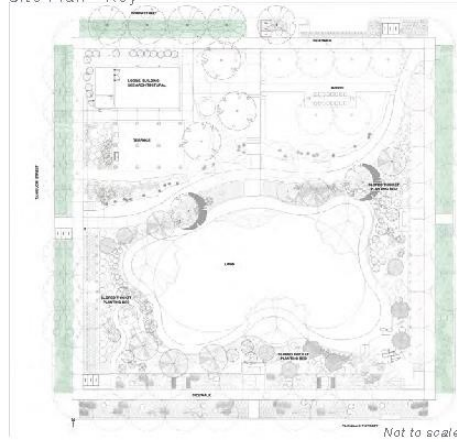


ROOF

- Standing seam metal
- 16" ribs
- Paint grip finish

Pavilion Color and Materials (Steel of Trellis will be allowed to weather.)

Site Plan - Key



Salvia coccinea 'Summer Jewel White' - White Tropical Sage



Symphiotricum oblongifolium - Fall Aster



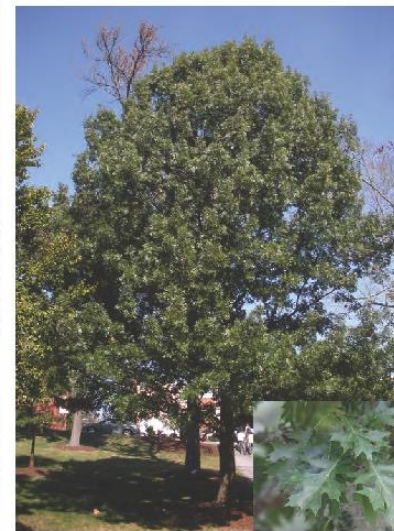
Carex divulsa - Berkeley Sedge



Opuntia ellisiana - Spineless Prickly Pear



Platanus mexicana - Mexican Sycamore



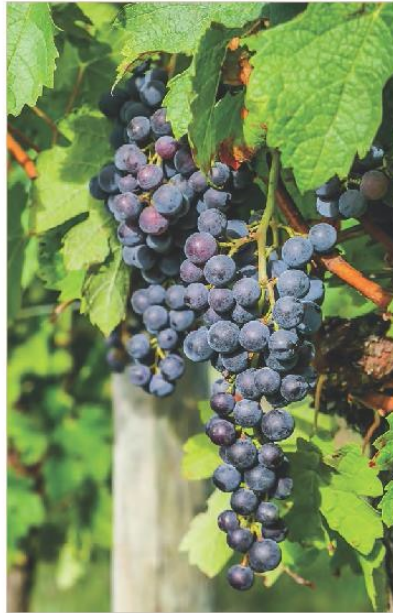
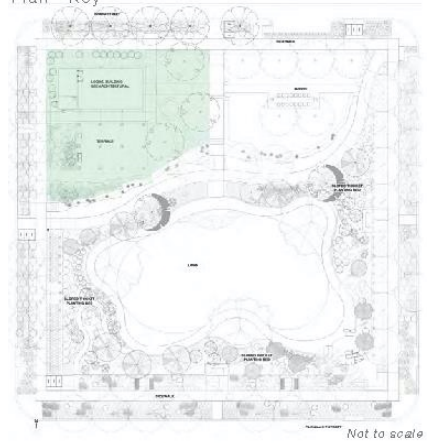
Quercus shumardii - Shumard Oak



Quercus texana - Texas Red Oak

PLANT IMAGES: STREETSCAPE (TYPICAL)

Plan - Key



Vitis 'Black Spanish' -
Black Spanish Grape



Symphoricarpos oblongifolius - Fall Aster



Yucca recurvifolia - Soft Leaf Yucca



Quercus muehlenbergii - Chinquapin Oak



Ficus carica - Fig



Opuntia ellisiana - Spineless Prickly



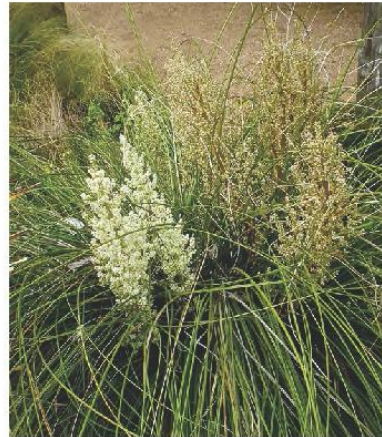
Salvia 'Indigo Spires' -
Indigo Spires Sage



Cercis canadensis var. *texensis* - Texas Redbud Oak

PLANT IMAGES: NW QUADRANT

Site Plan - Key



Nolina lindheimeriana - Devil's Shoes string



Dasyllirion quadrangulatum - Mexican Grass Tree



Salvia 'Indigo Spires' - Indigo Spires Sage



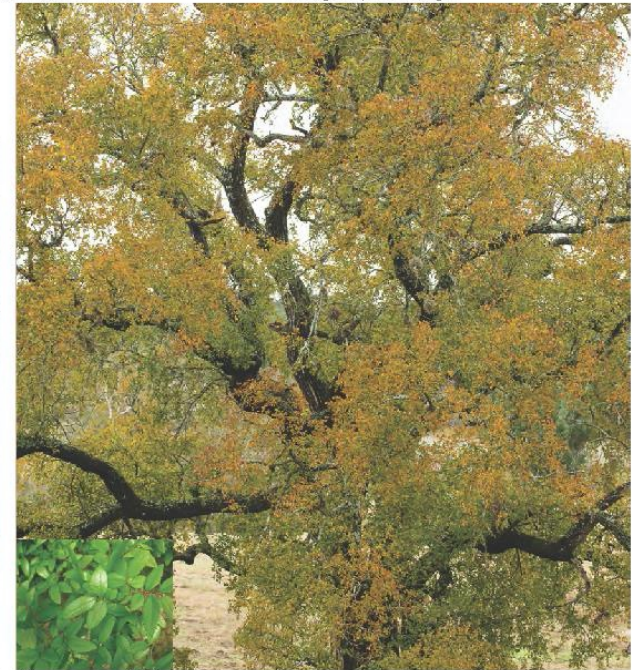
Cordia boissieri - Mexican Olive



Chasmanthium latifolium - Inland Sea Oats



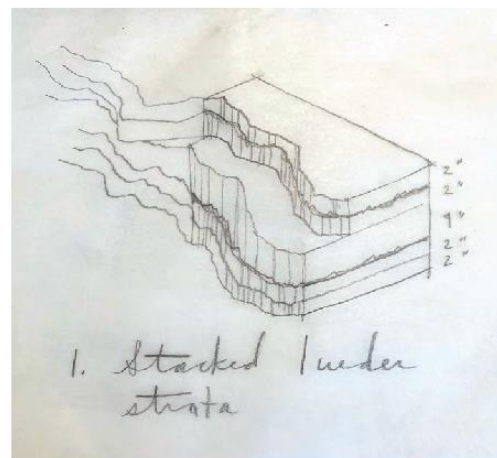
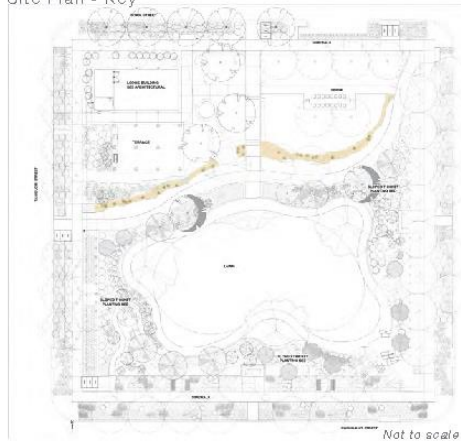
Ungnadia speciosa - Mexican Buckeye



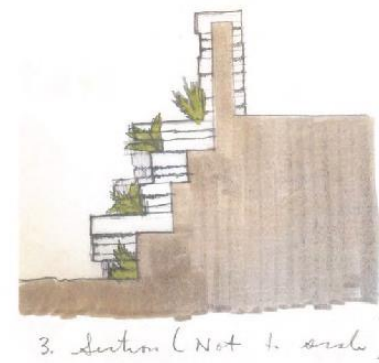
Ulmus crassifolia - Cedar Elm

PLANT IMAGES: SLOPED THICKET

Site Plan - Key



1. Stacked / under strata



3. Section (Not to scale)



STACKED STONE WALL