

MUELLER

Zach Scott Greenway MUELLER COMMISSION



Studio8
Architecture & Interiors



Stantec



August 9, 2022





TENNIS COURTS BY AISD

BASKETBALL COURT

SHADE PAVILION

MOWED OPEN

<30" RETAINING WALL
(TO MATCH WALL AT
ZACH SCOTT AND TOM
MILLER)

SECTION
10

SEE ENLARGEMENT
NEXT SHEET

SCHOOL SITE

10' WIDE CONTINUATION OF
MUELLER HIKE AND BIKE TRAIL

OPEN MEADOW

TROUBLEMAKER
STUDIOS

ZACH SCOTT ST

SECTION 11

BUFFERING AT BACK LOT
STORAGE

BENCHES (TYP X6)

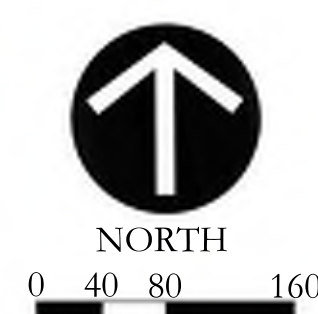
EXISTING ACCESS ROAD

300'X150' MOWED

WILDFLOWER/PRAIRIE MIX (TYP.)

LIMIT OF WORK

AUSTIN SHINES



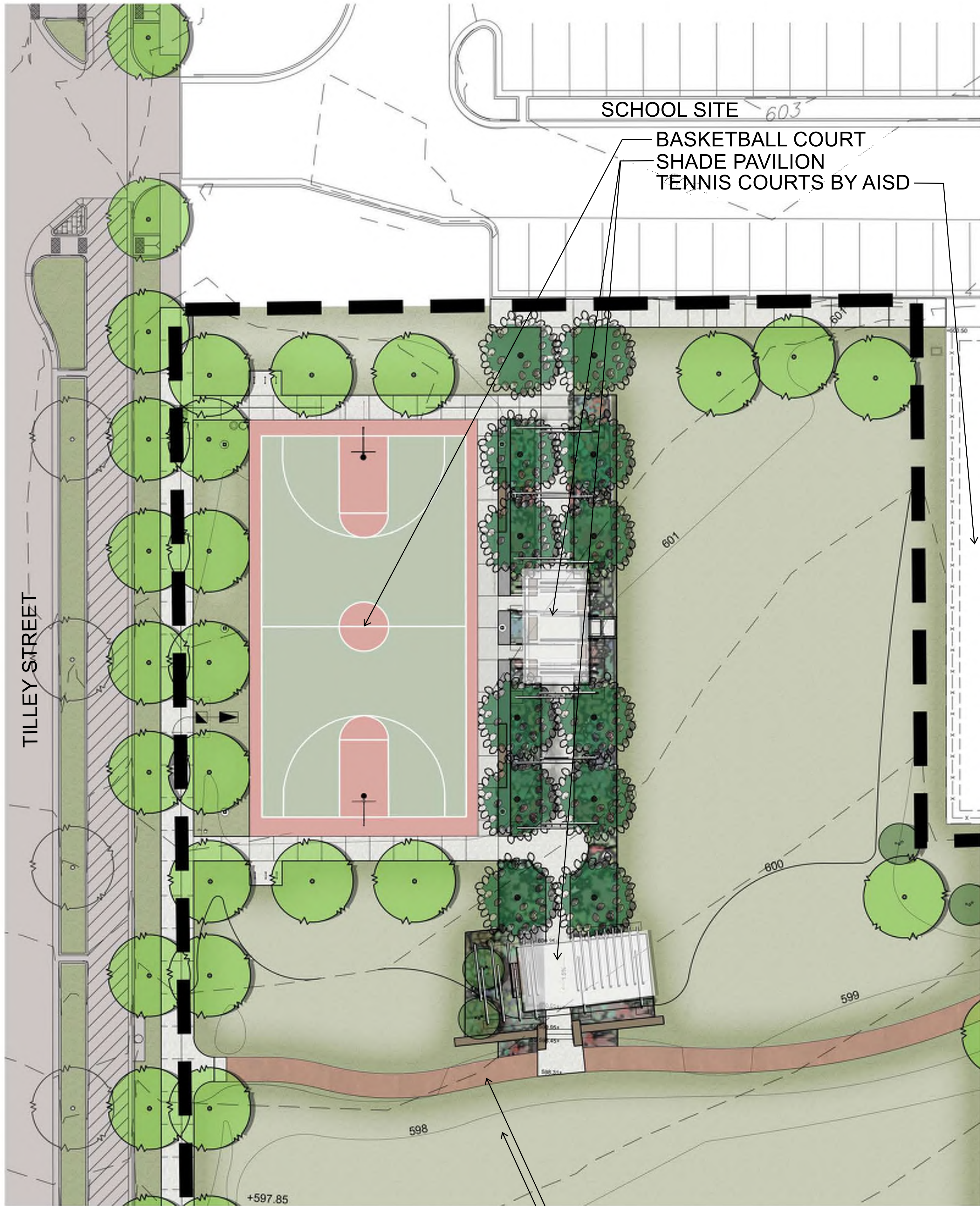
10' WIDE SIDEWALK
ALONG ZACH SCOTT

OVERALL SITE PLAN

Zach Scott Greenway

Prepared for Catellus Austin, LLC by RVi Planning and Landscape Architecture, Studio 8, Stantec, and AEC
August 9, 2022





INSPIRATIONAL IMAGERY



GREENWAY



DISCOVERY



FAMILY



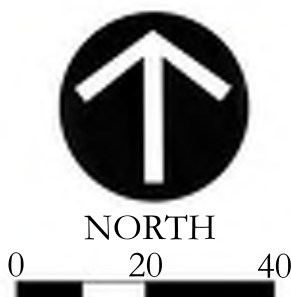
SPORT FIELDS



ACTIVE



BASKETBALL COURT



ENLARGEMENT PLAN

Zach Scott Greenway

Prepared for Catellus Austin, LLC by RVi Planning and Landscape Architecture, Studio 8, Stantec, and AEC
August 9, 2022





DECOMPOSED GRANITE



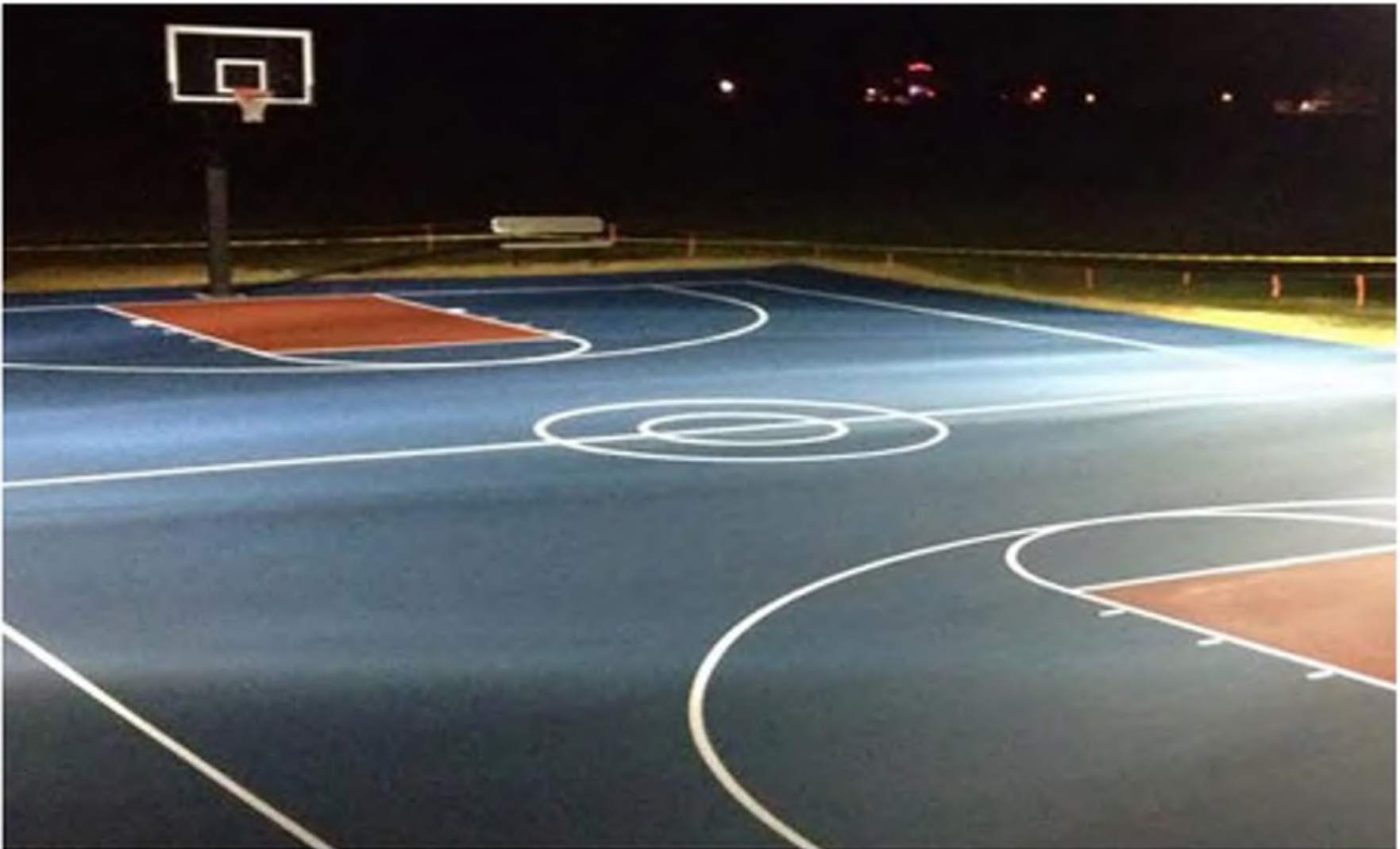
EXPOSED AGGREGATE



PECOS BLOCK (SEATING)



BASKETBALL LIGHTING



BASKETBALL SURFACE



TRASH RECEPTACLES



BIKE RACK



DOGIPOT



BOLLARD



MILE MARKER



LIMESTONE WALL



BENCH



SITE FURNISHINGS AND HARDSCAPE

Zach Scott Greenway

Prepared for Catellus Austin, LLC by RVi Planning and Landscape Architecture, Studio 8, Stantec, and AEC
August 9, 2022



SHADE TREES



CEDAR ELM



CHINQUAPIN OAK



SOUTHERN LIVE OAK



MEXICAN SYCAMORE

ORNAMENTAL TREES



ANACUA



TEXAS REDBUD

SCREEN TREES



HUISACHE



TEXAS MOUNTAIN LAUREL



MEXICAN PLUM



YAUPON

SHRUBS



TEXAS SAGE



DWARF PALMETTO



FIRECRACKER PLANT

GRASSES



BAMBOO MUHLY



GULF COAST MUHLY



BIG MUHLY

VINES

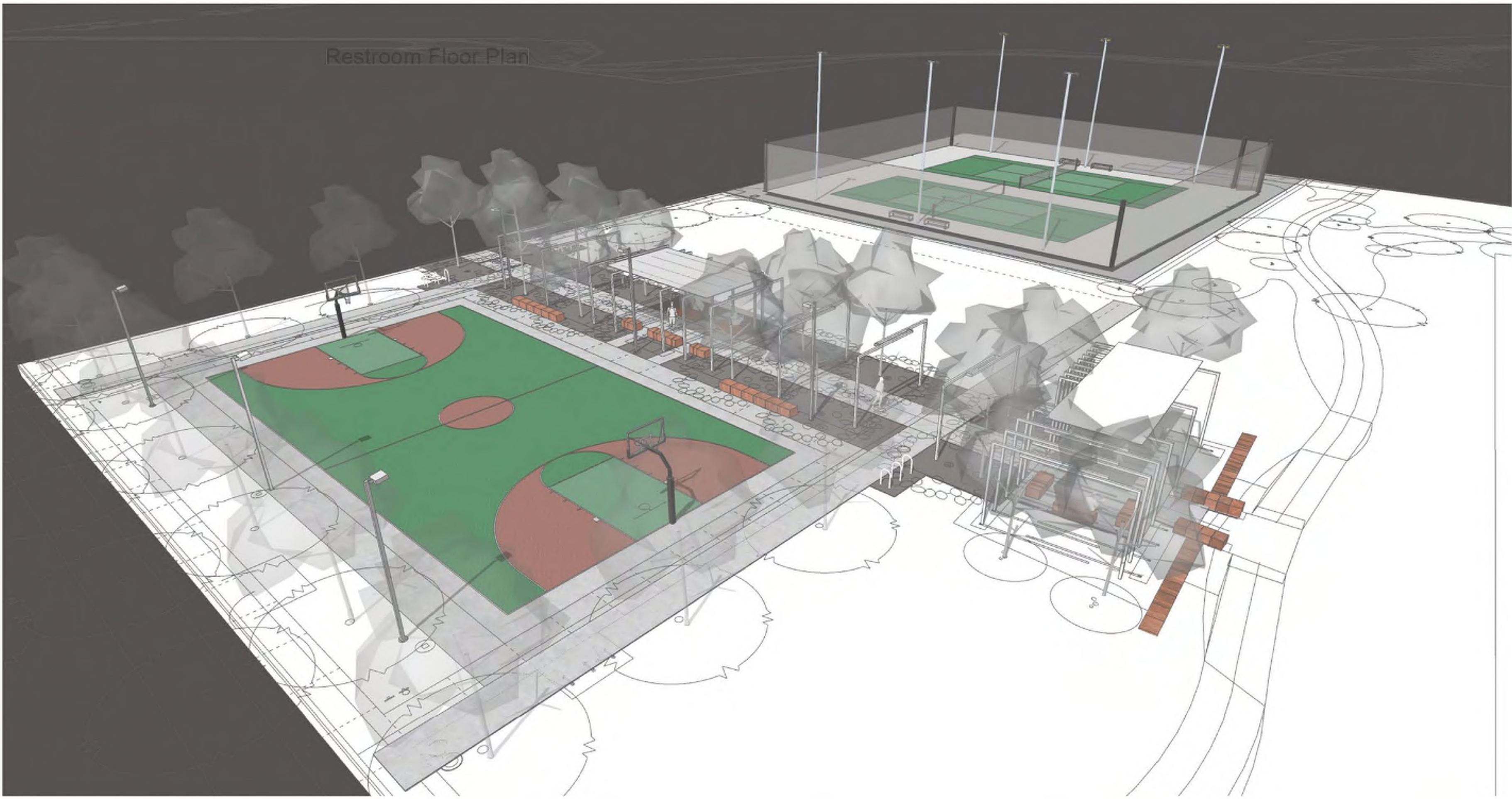


CROSS VINE

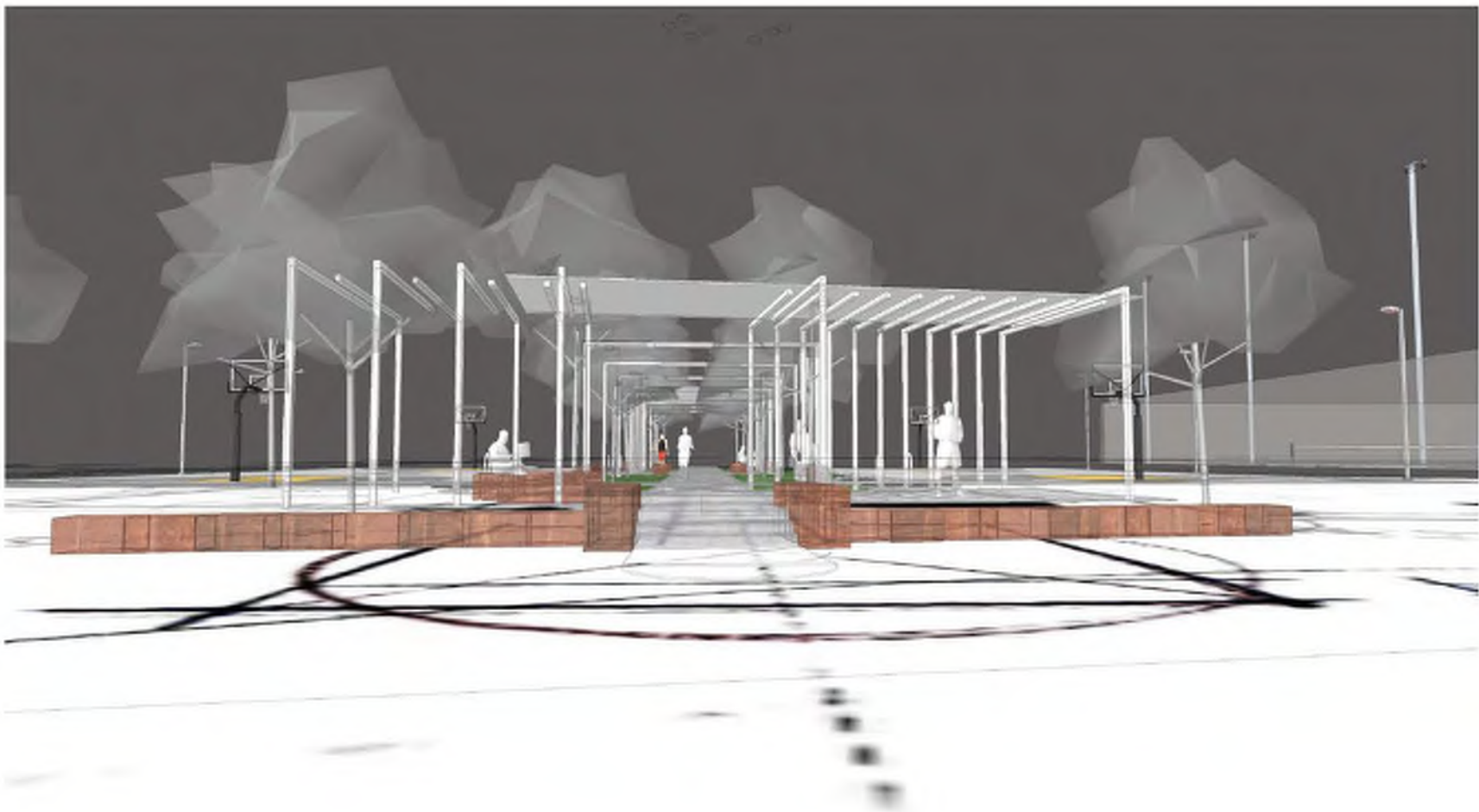
PLANT LIST

TREES	CONT	CAL	SIZE	NOTES
Platanus mexicana / Mexican Sycamore	65 gal	3"	12'	SHADE TREE
Quercus muehlenbergii / Chinkapin Oak	65 gal	3"	12'	BROAD SPREADING
Quercus texana / Texas Red Oak	100 gal.	6"	15'	WITH CHARACTER
Quercus texana / Texas Red Oak	65 gal	3"Cal	10'	WITH CHARACTER
Quercus virginiana / Southern Live Oak	65 gal	3"	12'	WITH CHARACTER
Ulmus crassifolia / Cedar Elm	65 gal	3"	12'	STREET TREE
ORNAMENTAL TREES	CONT	CAL	SIZE	NOTES
Acacia farnesiana / Sweet Acacia	25 gal	2"Cal	8'	PLANTED AWAY FROM TRAILS
Cercis canadensis texensis / Texas Redbud	30 gal	2"	15'	SCREENING/FLOWERING
Ehretia anacua / Anacua	30 gal	2"	8'-10' HT	SCREENING/FLOWERING
Ilex vomitoria / Yaupon Holly	15 gal	2"	7'-14'	SCREENING/FLOWERING
Prunus mexicana / Mexican Plum	30 gal	2"Cal	8'	SCREENING/FLOWERING
Sophora secundiflora / Texas Mountain Laurel	15 gal	2"	10'	SCREENING/FLOWERING
SHRUBS	CONT	SPACING	NOTES	
Leucophyllum frutescens / Texas Sage	5 gal	48" o.c.	FLOWERING	
Russelia equisetiformis / Firecracker Plant	3 gal	36" o.c.	FLOWERING	
Sabal minor / Dwarf Palmetto	3 gal	60" O.C.	FOLIAGE	
GRASSES	CONT	SPACING	NOTES	
Muhlenbergia capillaris 'Gulf Coast' / Gulf Coast Muhly	3 gal	24" o.c.	FOUNDATION	
Muhlenbergia dumosa / Bamboo Muhly	3 gal	48" o.c.	FOUNDATION	
Muhlenbergia lindheimeri 'Big' / Big Lindheimer's Muhly	3 gal	36" o.c.	FOUNDATION	
VINES	CONT	SPACING	NOTES	
Bignonia capreolata / Cross Vine	5 gal	18" o.c.	AGGRESSIVE VINE FOR SCREENING	
ROCK	CONT	O.C.	NOTES	
River Rock / River Rock	n/a		DRAINAGE/MAINTENANCE STRIP	
SEED	CONT	O.C.	NOTES	
Cynodon dactylon / "Sultan" Bermuda Seed	seed		SEED TURF FOR OPEN FIELDS	
Native Seed Mix / Scorched Earth Mix	seed		SEED GRASS MIX FOR WILDFLOWER PRAIRIE	
TURF SOD	CONT	O.C.	NOTES	
Cynodon dactylon '419 Hybrid' / Bermuda Grass 'Tif 419'	sod	Solid Sod	SOD TURF IN ROW	

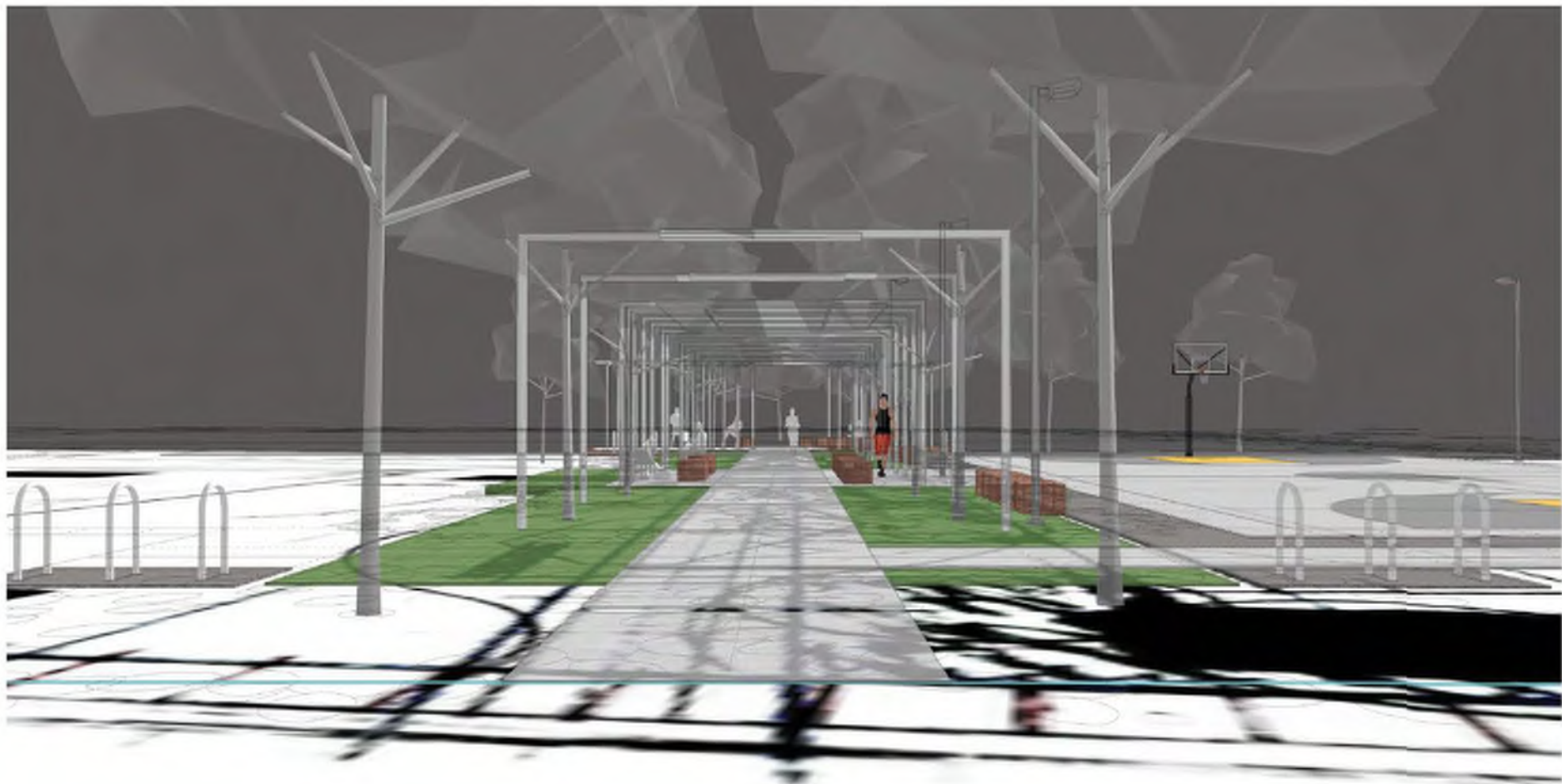




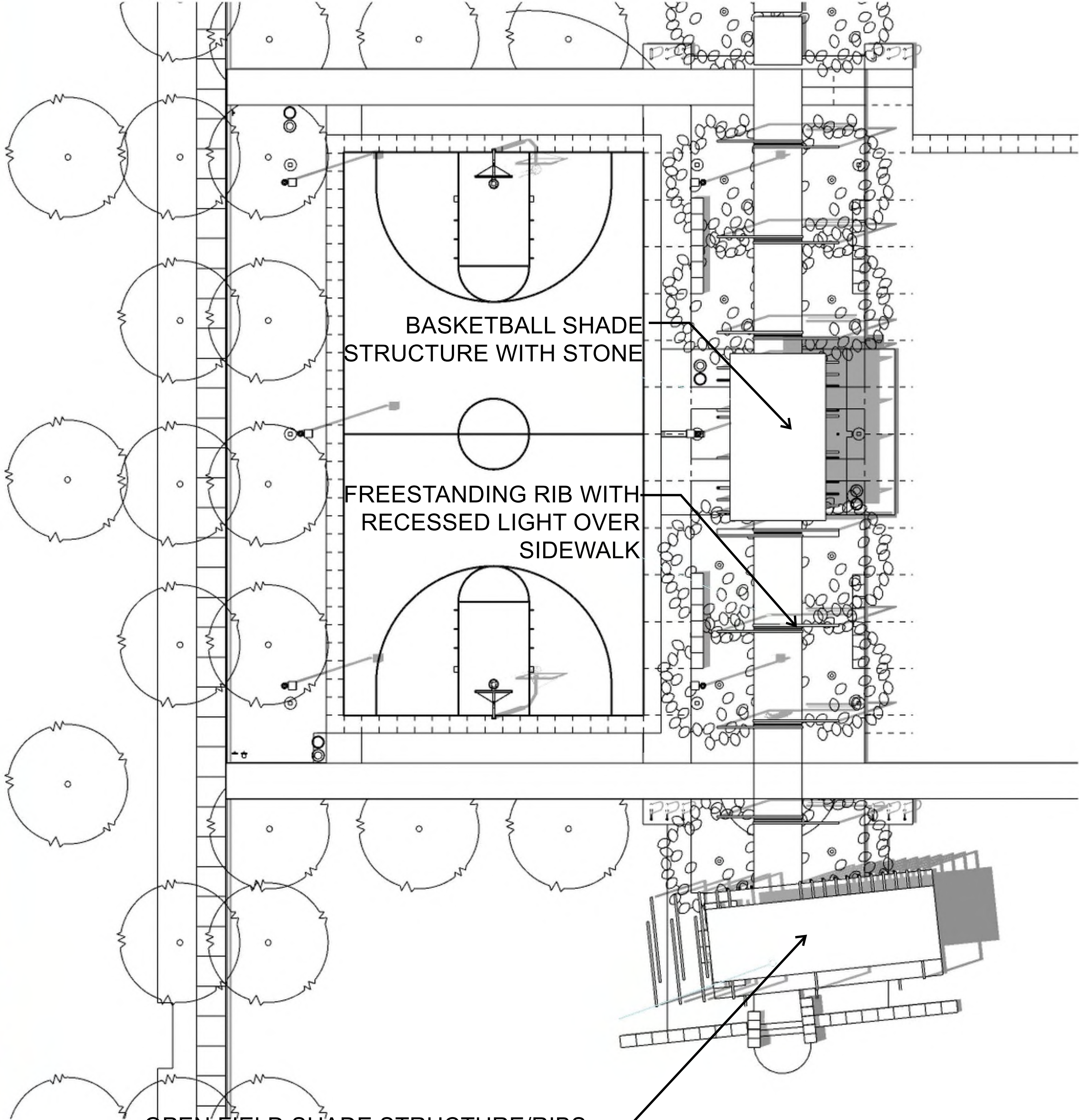
OVERALL STRUCTURE



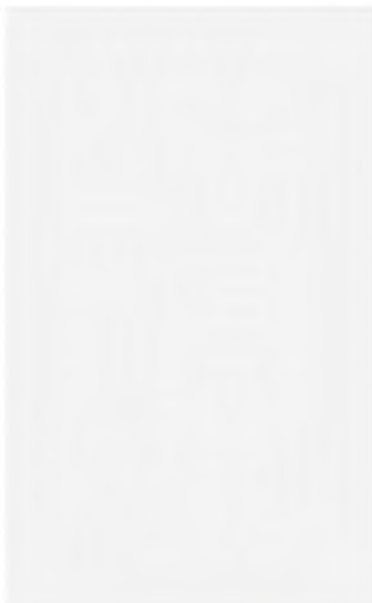
PLAY FIELD SHADE STRUCTURE



BASKETBALL SHADE STRUCTURE



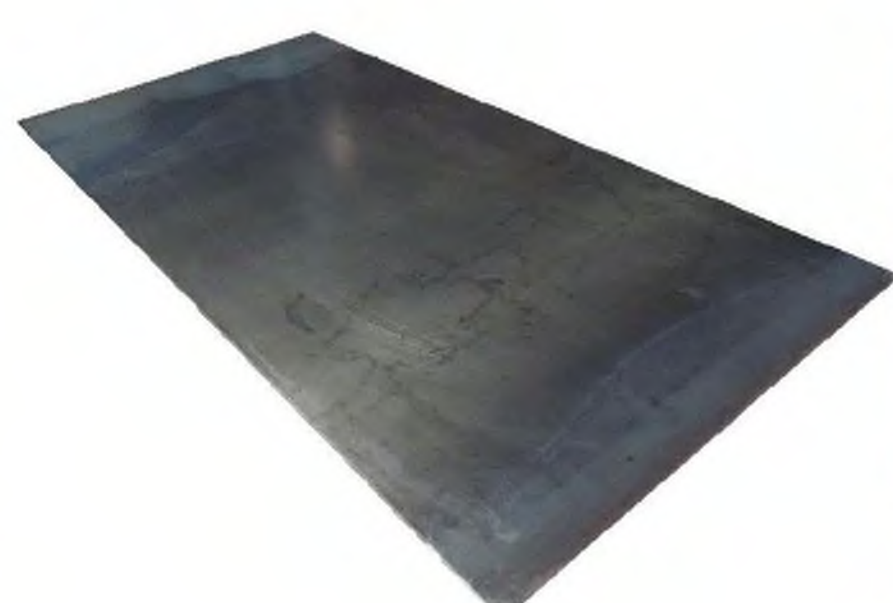
OPEN FIELD SHADE STRUCTURE/RIBS WITH STONE SEATING BELOW



SHADE STRUCTURE COLOR



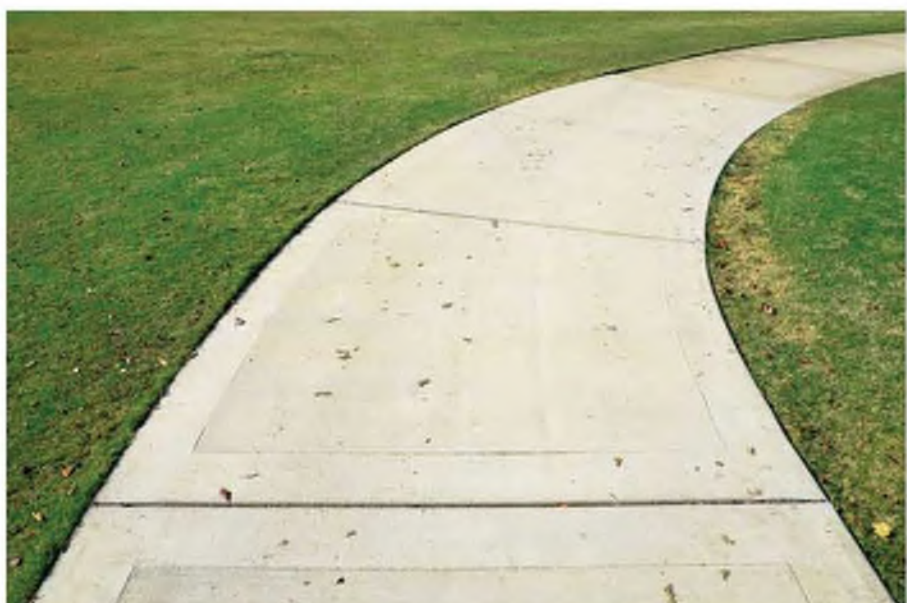
STEEL TUBE FRAMES



STEEL PLATE ROOF



RED STONE SEATING



CONCRETE PATH



SITE SECTION THROUGH SHADE STRUCTURES

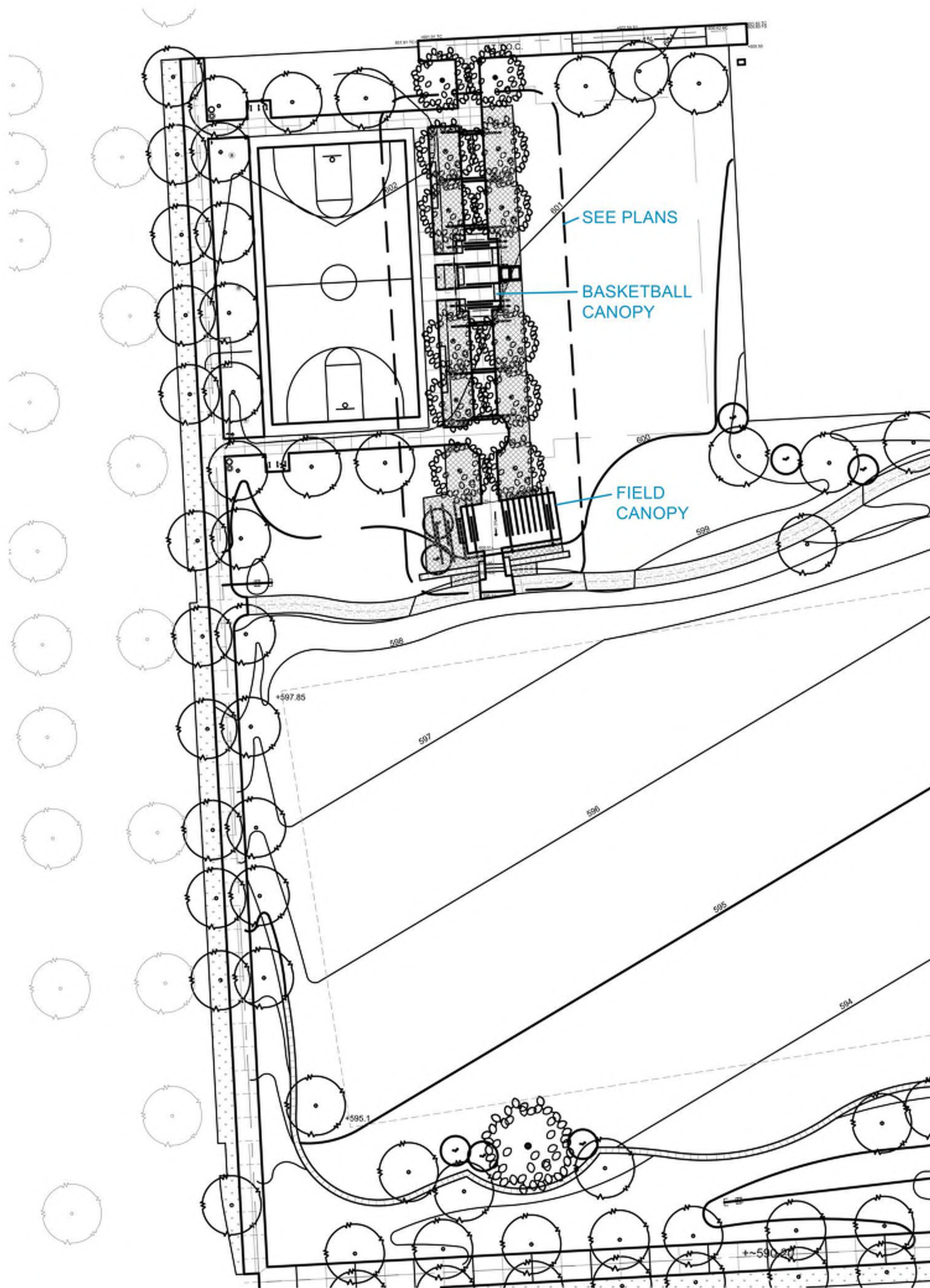


ARCHITECTURE - 3D AND MATERIALS

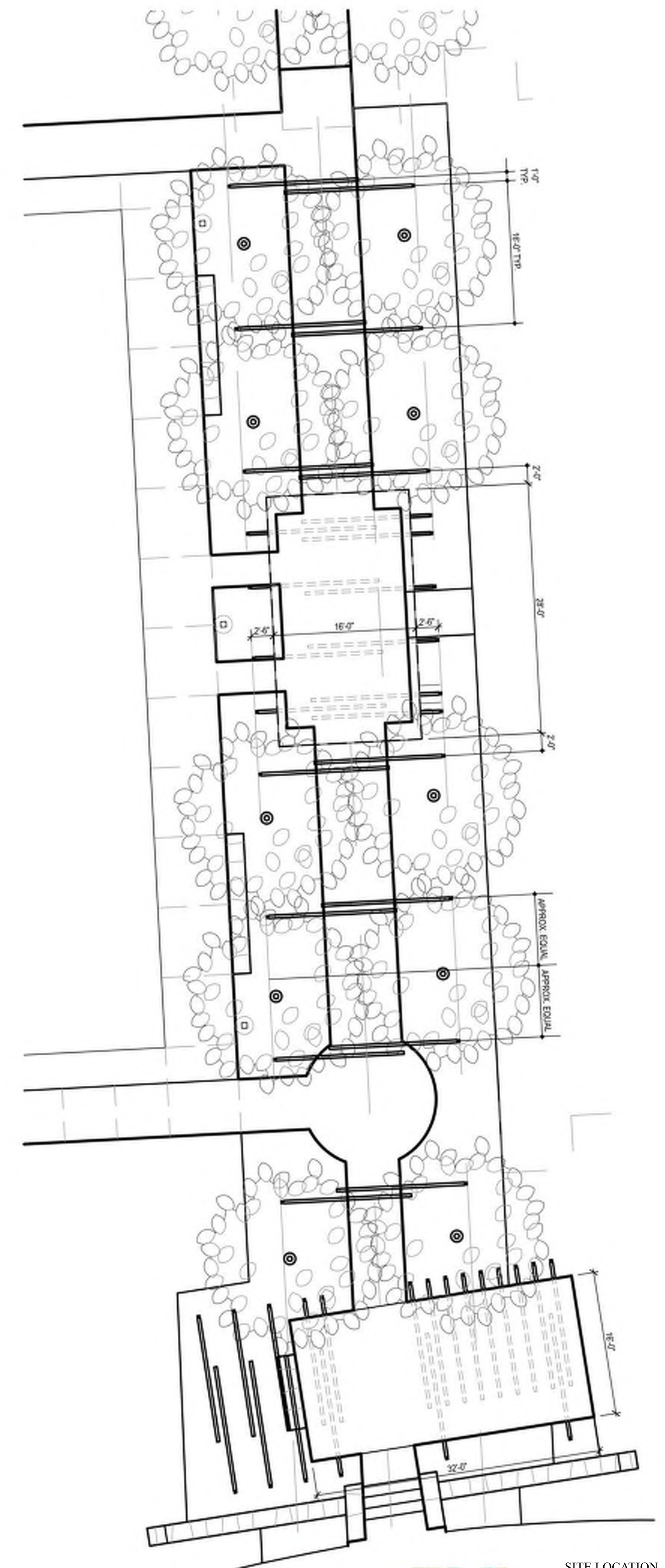
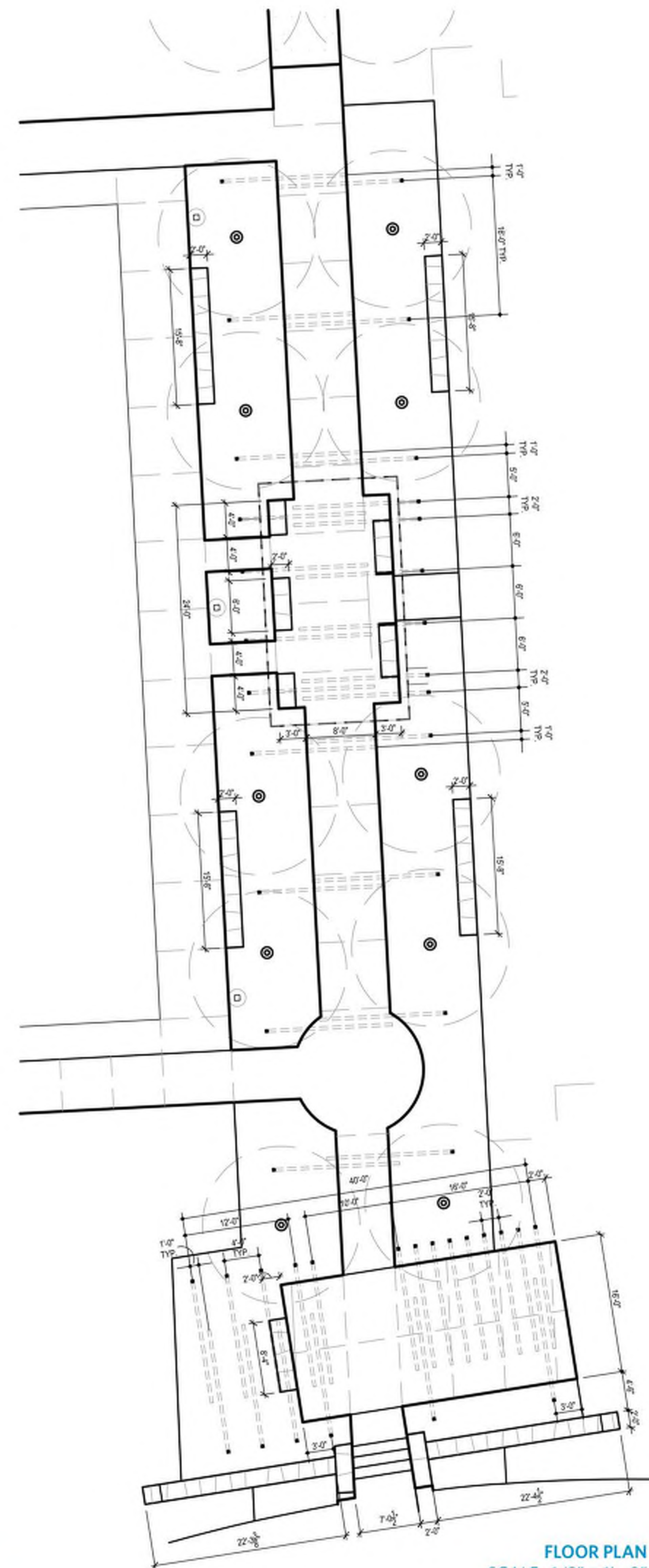
Zach Scott Greenway

Prepared for Catellus Austin, LLC by RVi Planning and Landscape Architecture, Studio 8, Stantec, and AEC
August 9, 2022



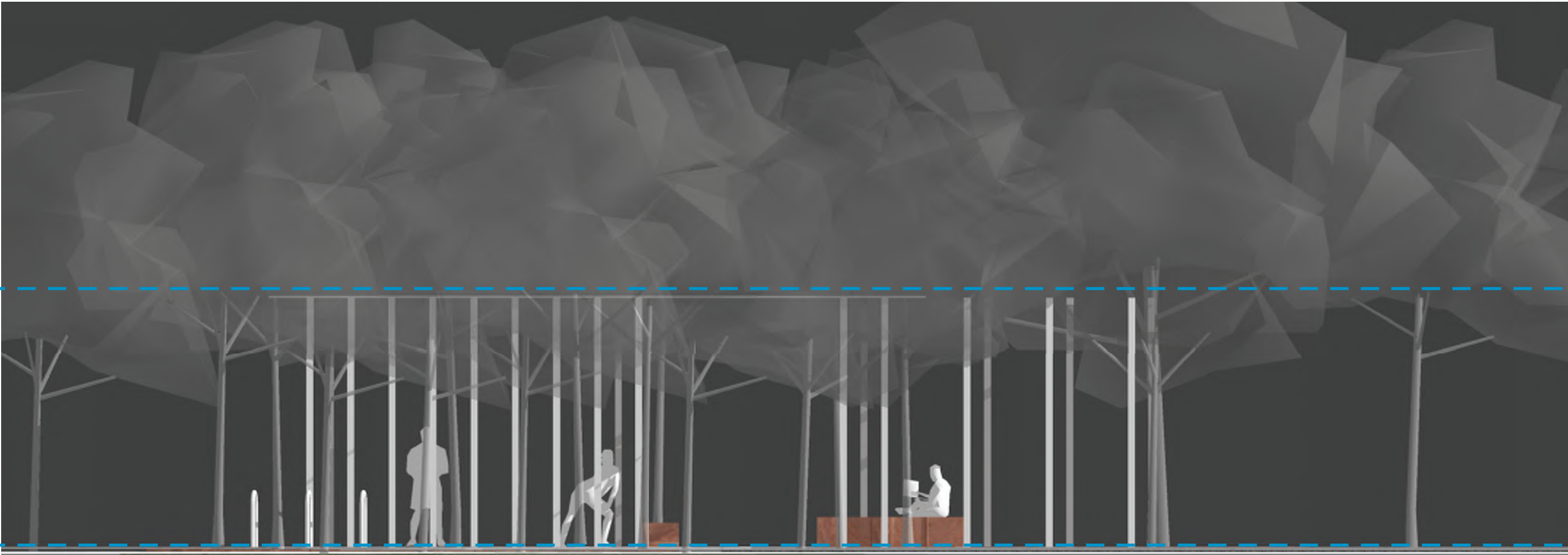


SITE PLAN
SCALE : 1" = 20' - 0"





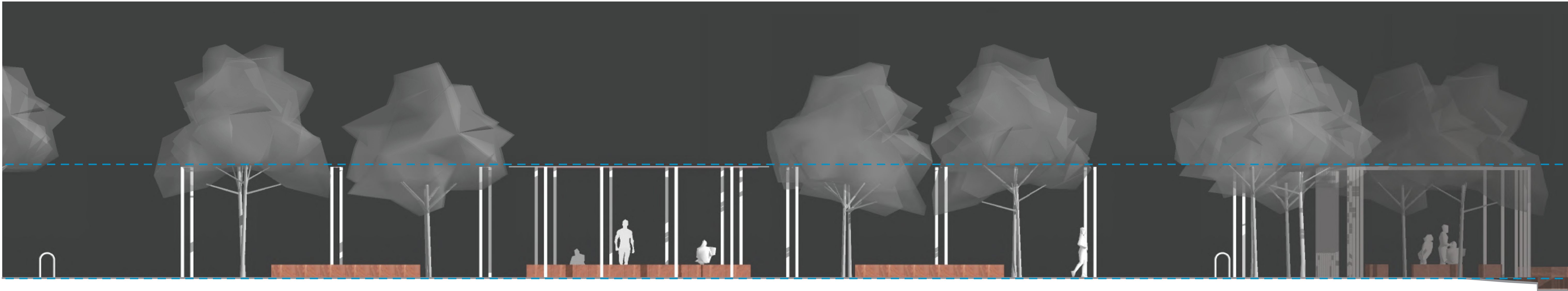
FIELD SHADE STRUCTURE - SOUTH ELEVATION
SCALE : 3/16" = 1' - 0"



FIELD SHADE STRUCTURE - NORTH ELEVATION
SCALE : 3/16" = 1' - 0"

ROOF HEIGHT =
12' - 0" ABOVE
FINISHED GRADE

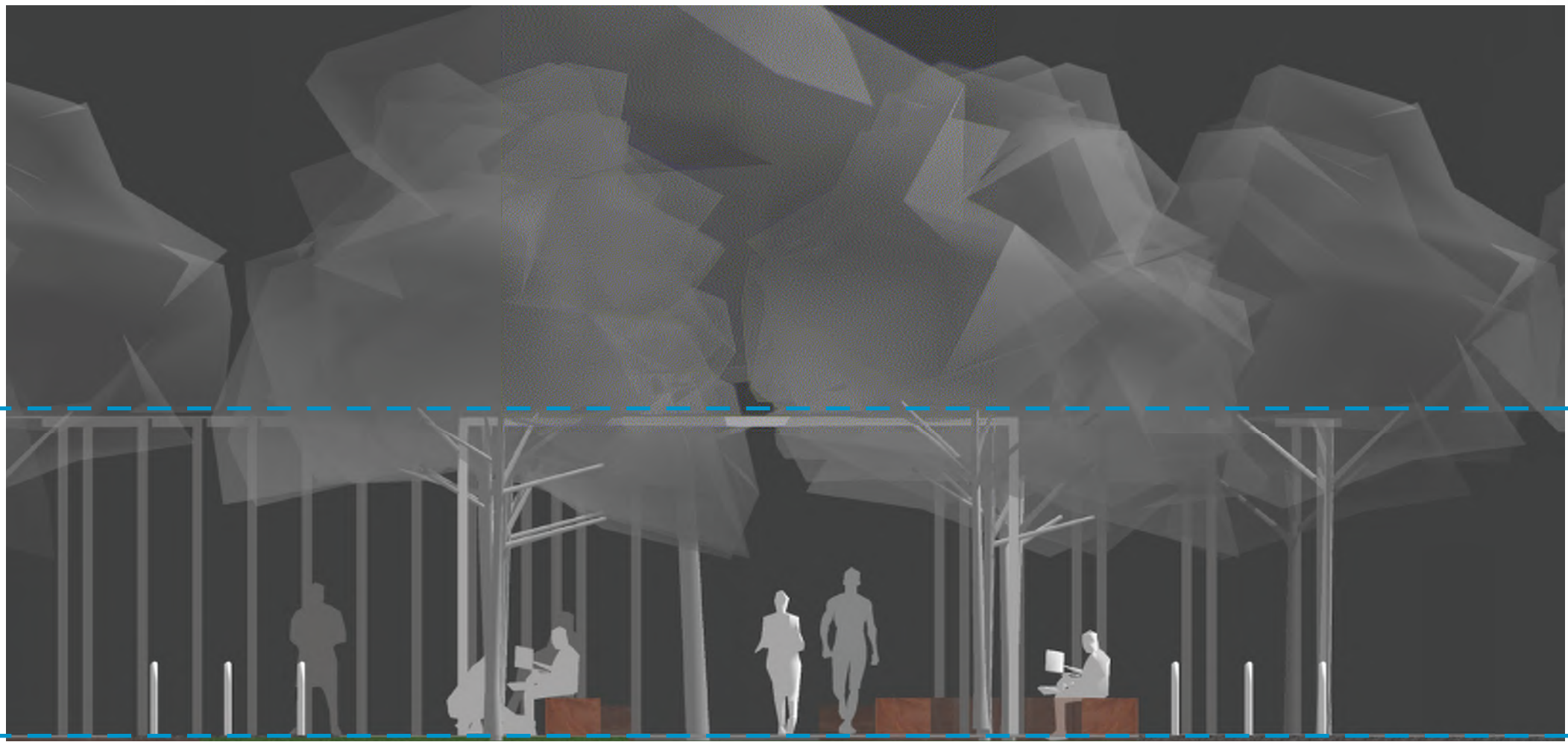
FINISHED GRADE =
0' - 0" WITH SOME
VARIATION TO DRAIN



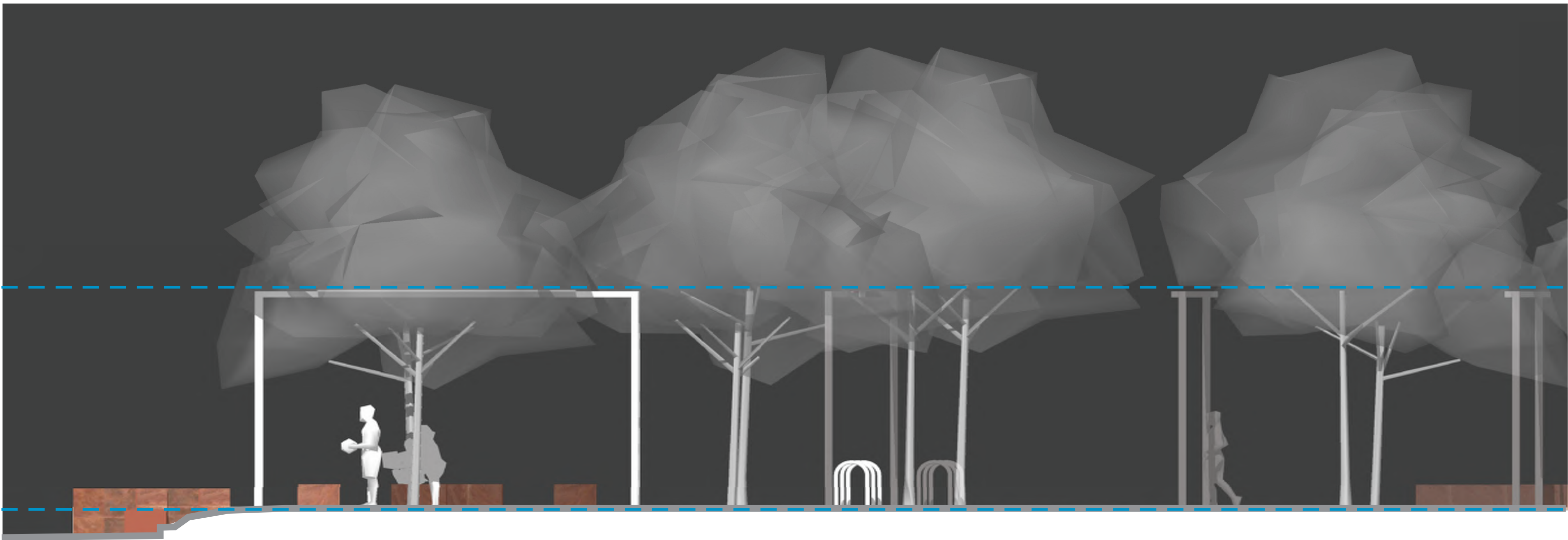
BASKETBALL SHADE STRUCTURE - EAST/WEST ELEVATION
SCALE : 3/16" = 1' - 0"

ROOF HEIGHT =
12' - 0" ABOVE
FINISHED GRADE

FINISHED GRADE =
0' - 0" WITH SOME
VARIATION TO DRAIN



BASKETBALL SHADE STRUCTURE - NORTH/SOUTH ELEVATION
SCALE : 3/16" = 1' - 0"



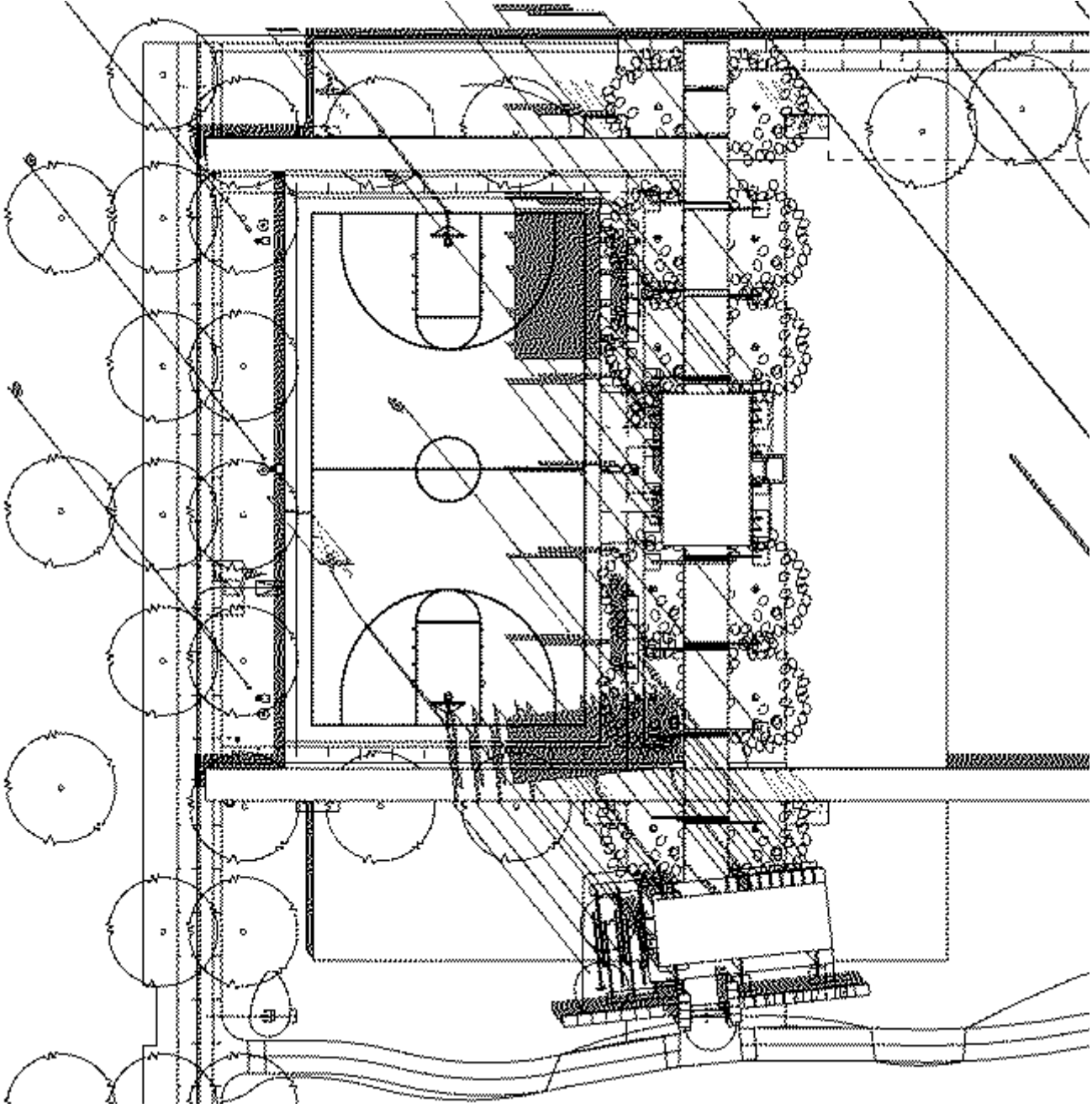
FIELD SHADE STRUCTURE - EAST/WEST ELEVATION
SCALE : 3/16" = 1' - 0"

ROOF HEIGHT =
12' - 0" ABOVE
FINISHED GRADE

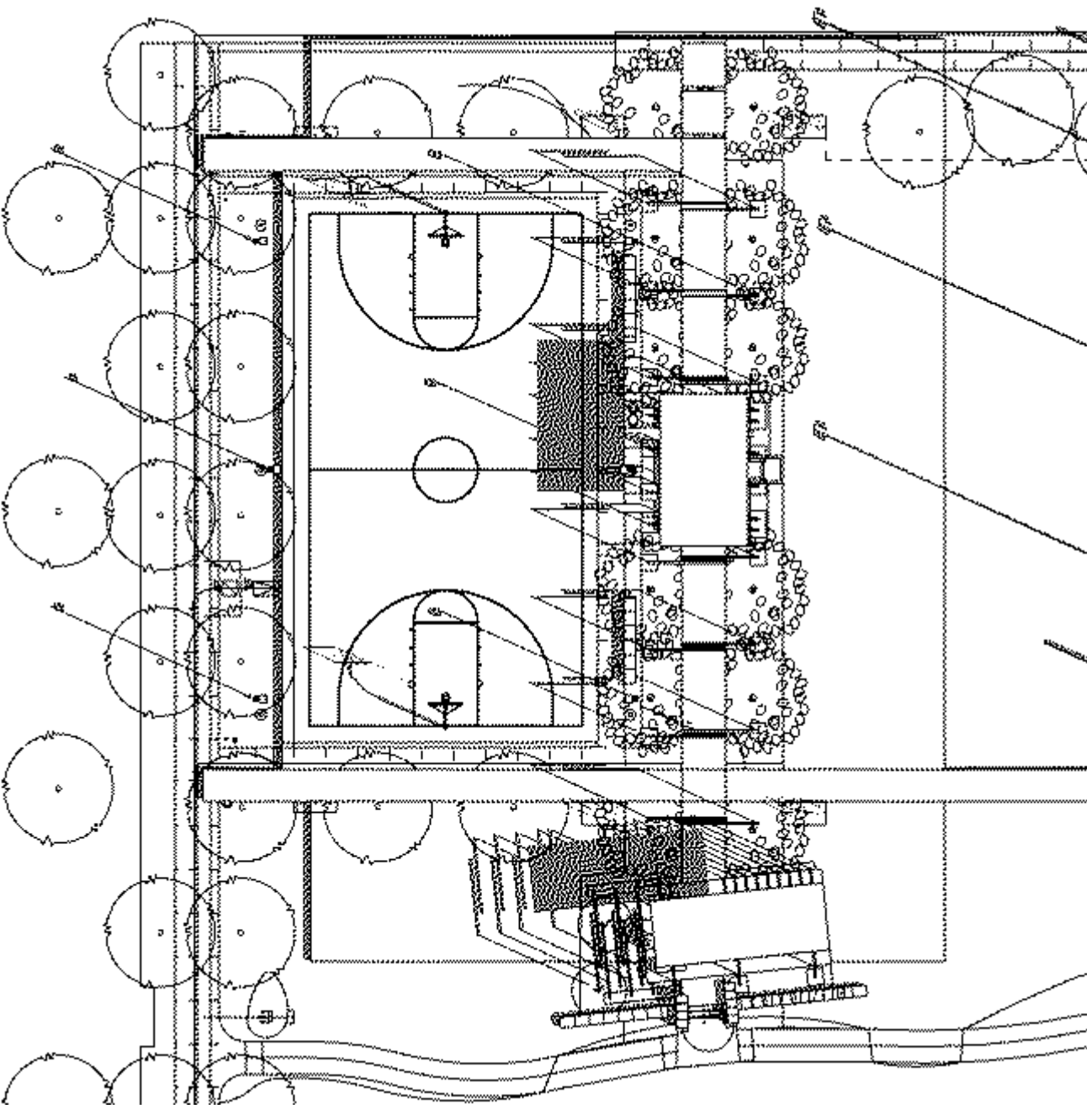
FINISHED GRADE =
0' - 0" WITH SOME
VARIATION TO DRAIN



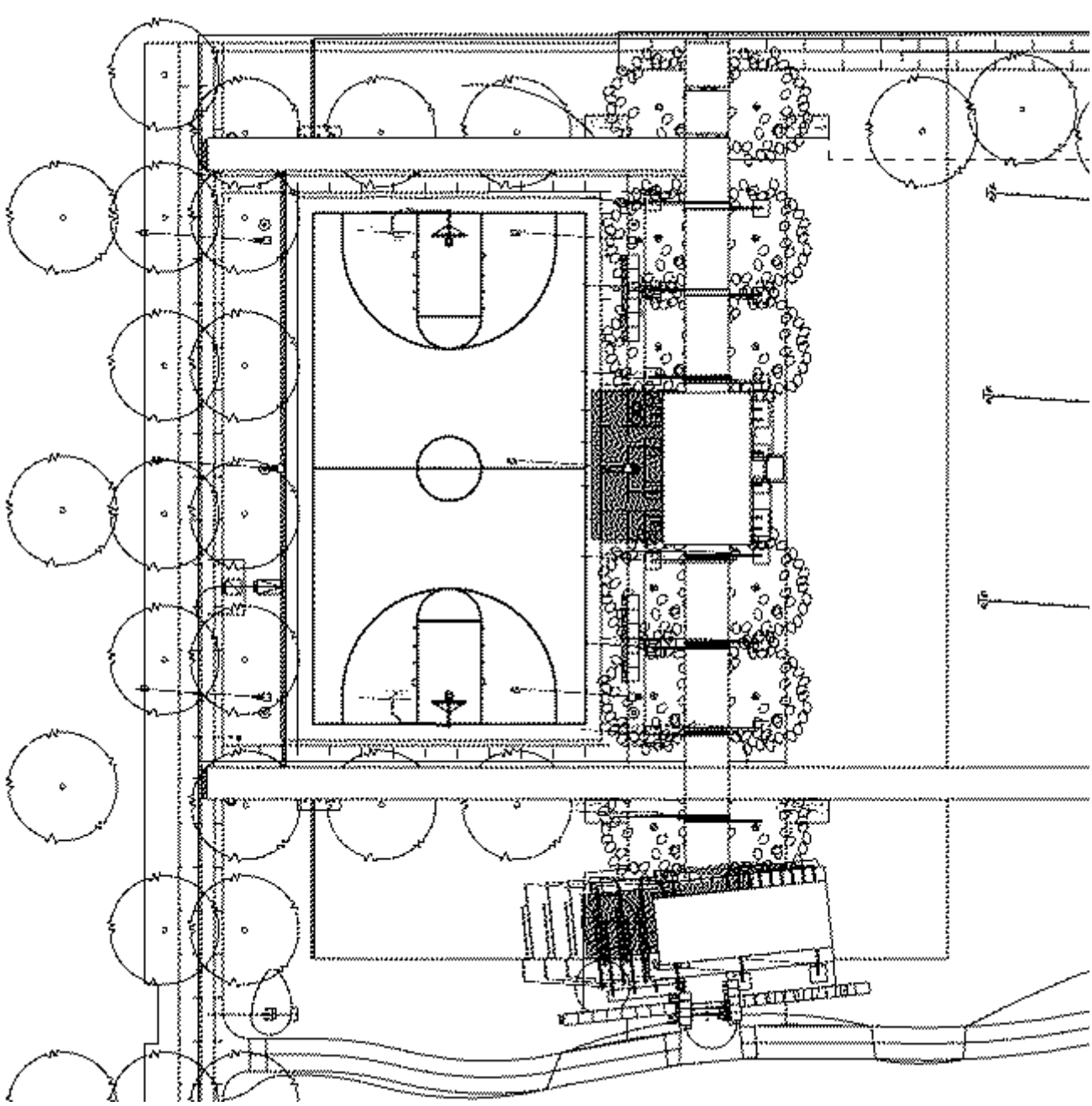
WINTER SOLSTICE



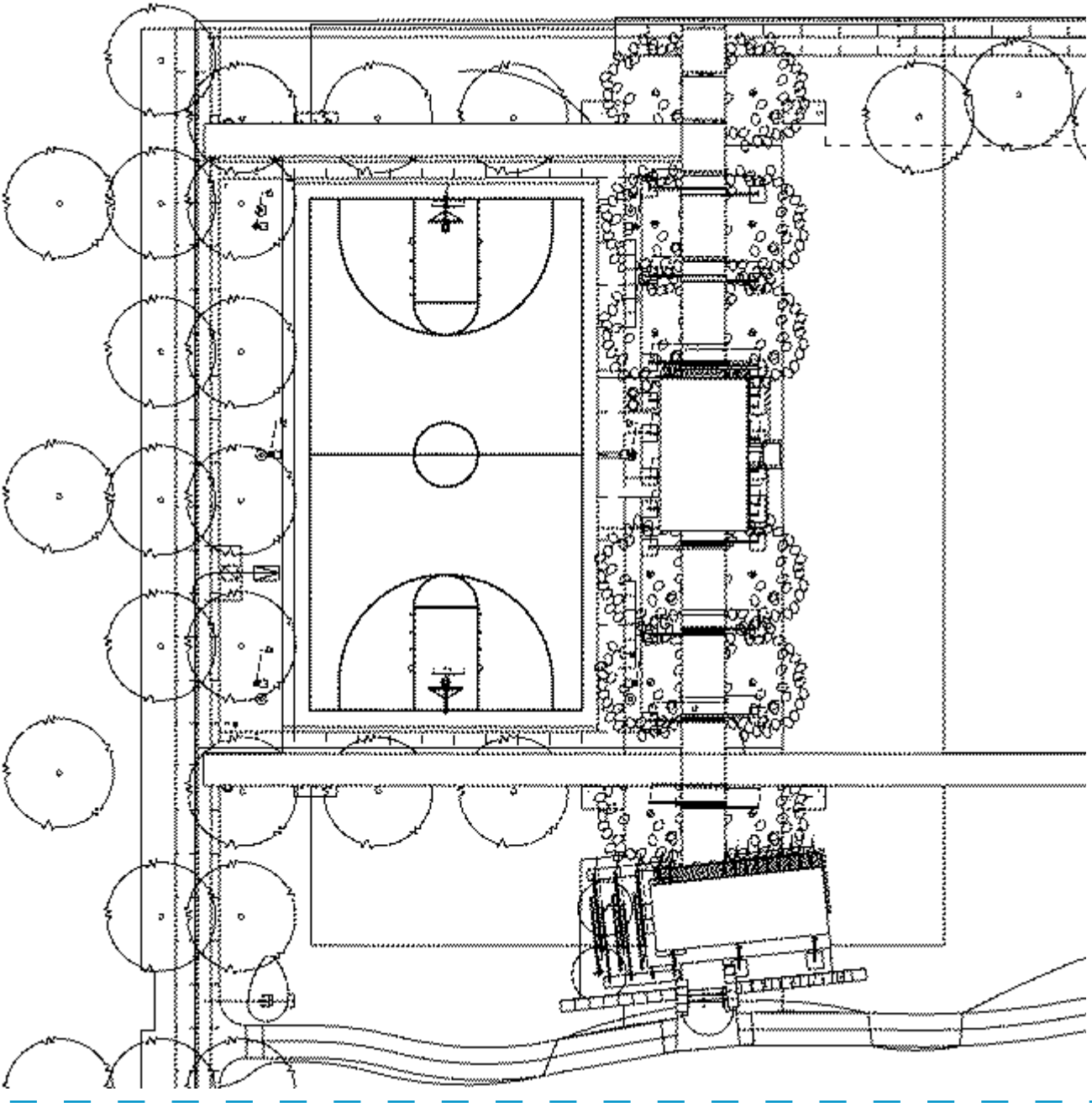
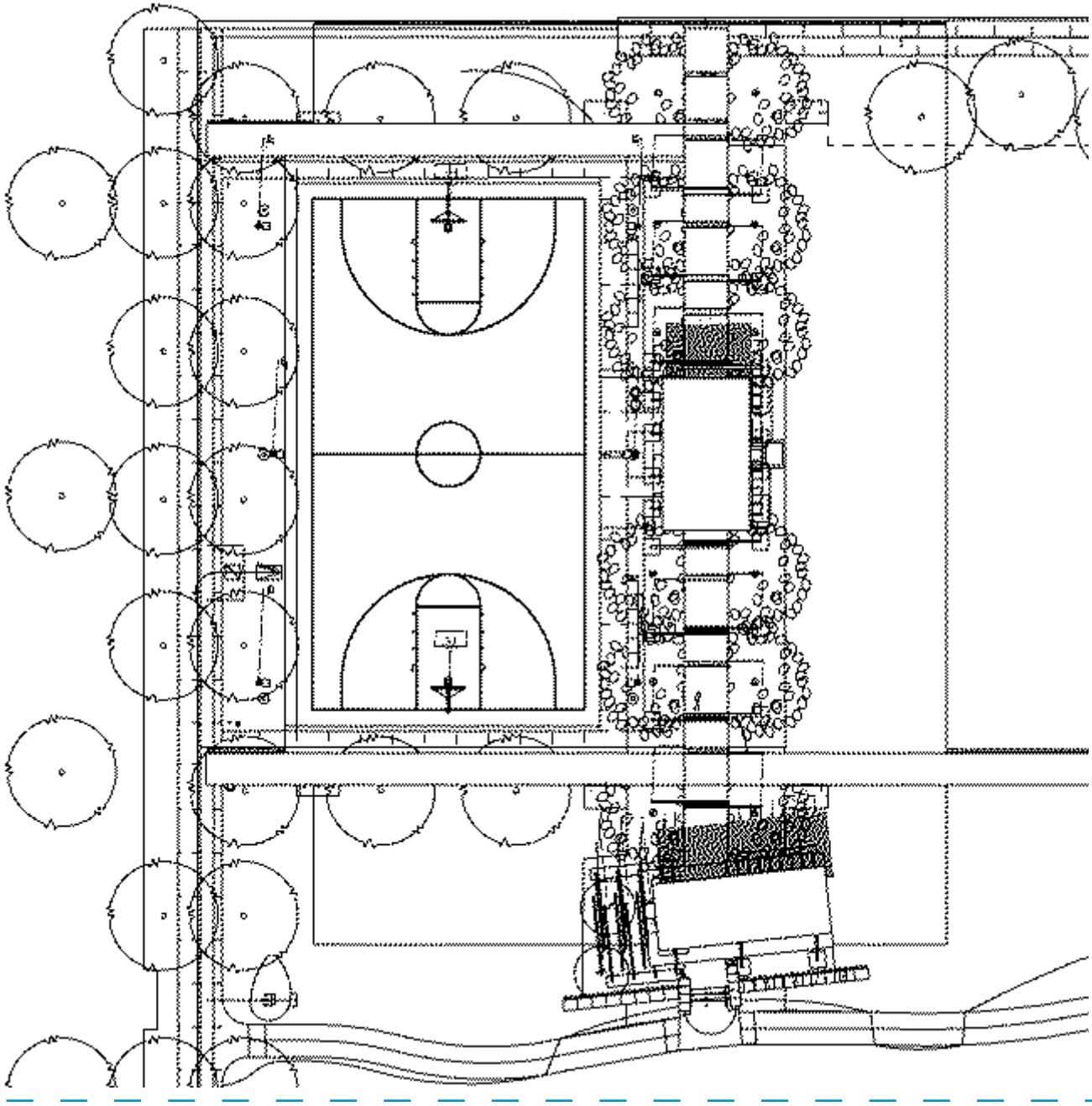
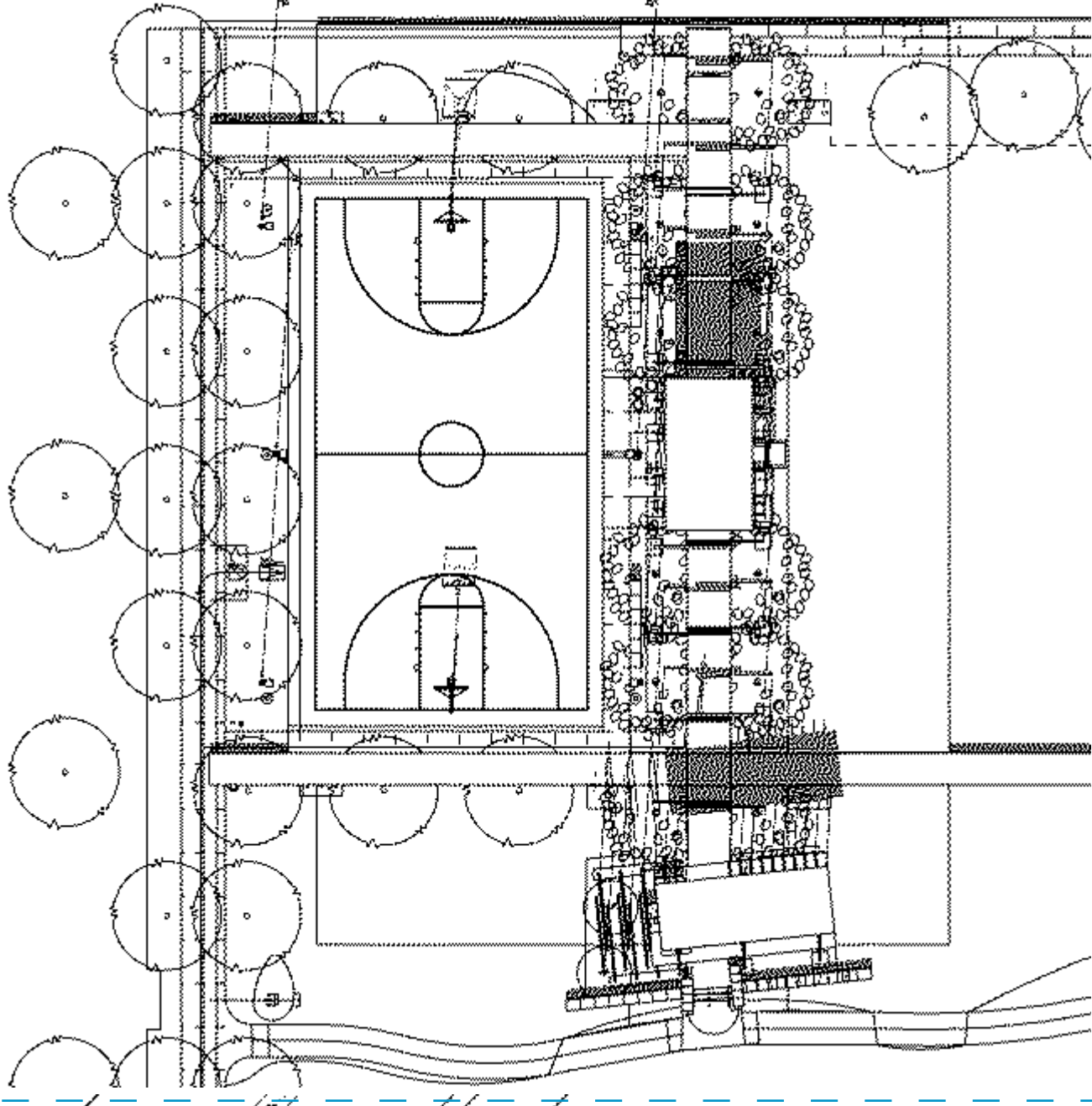
EQUINOX



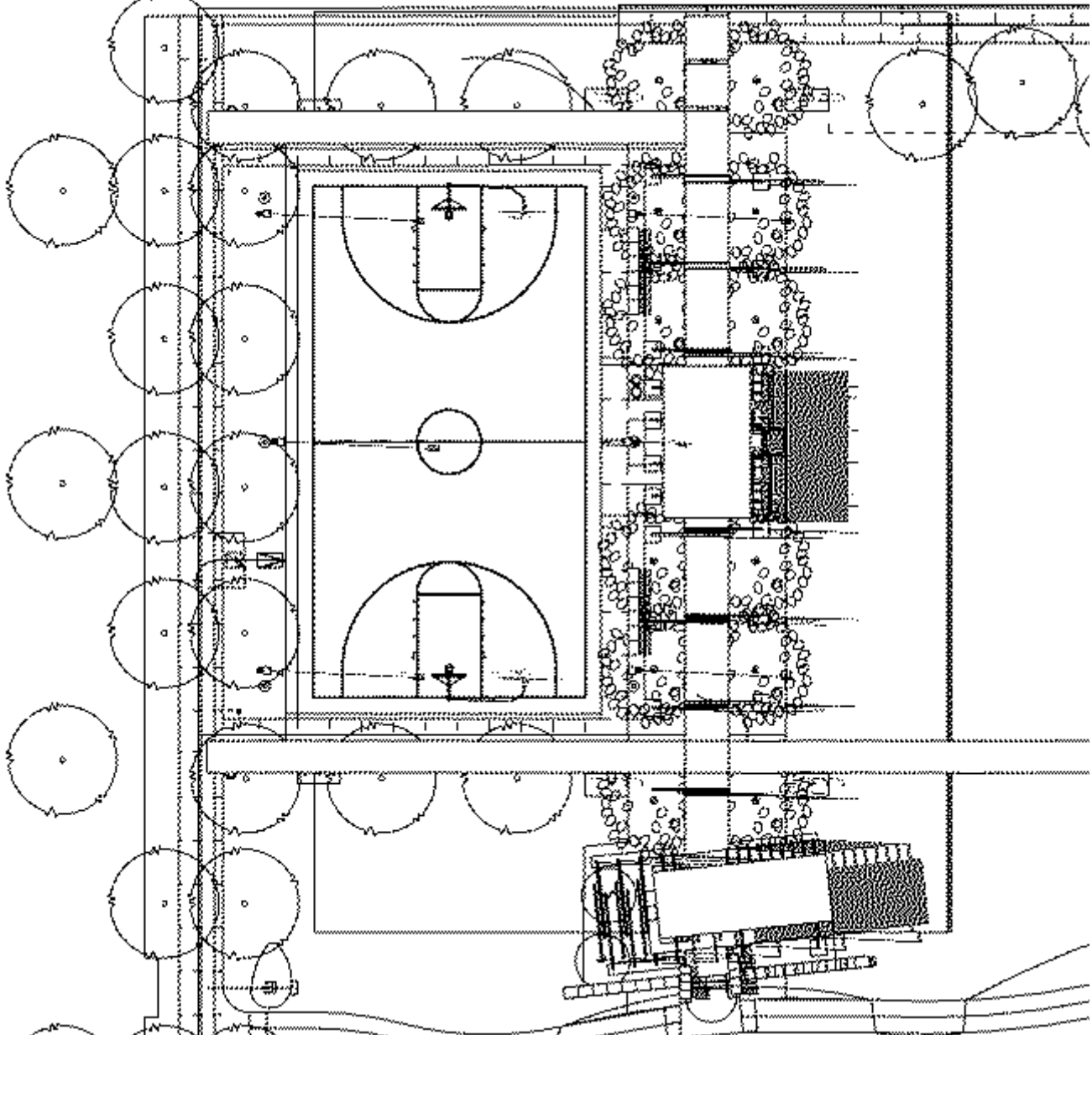
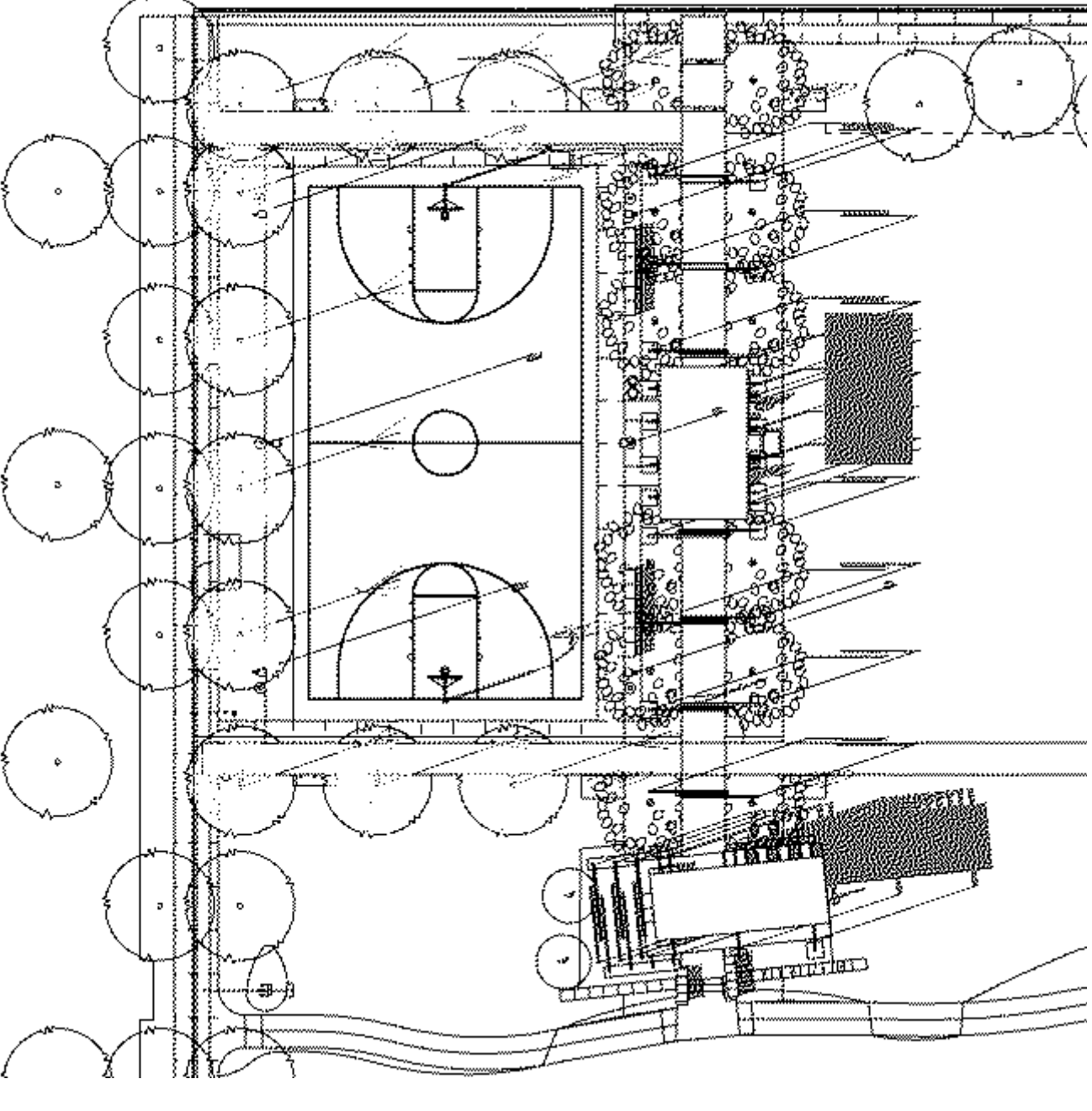
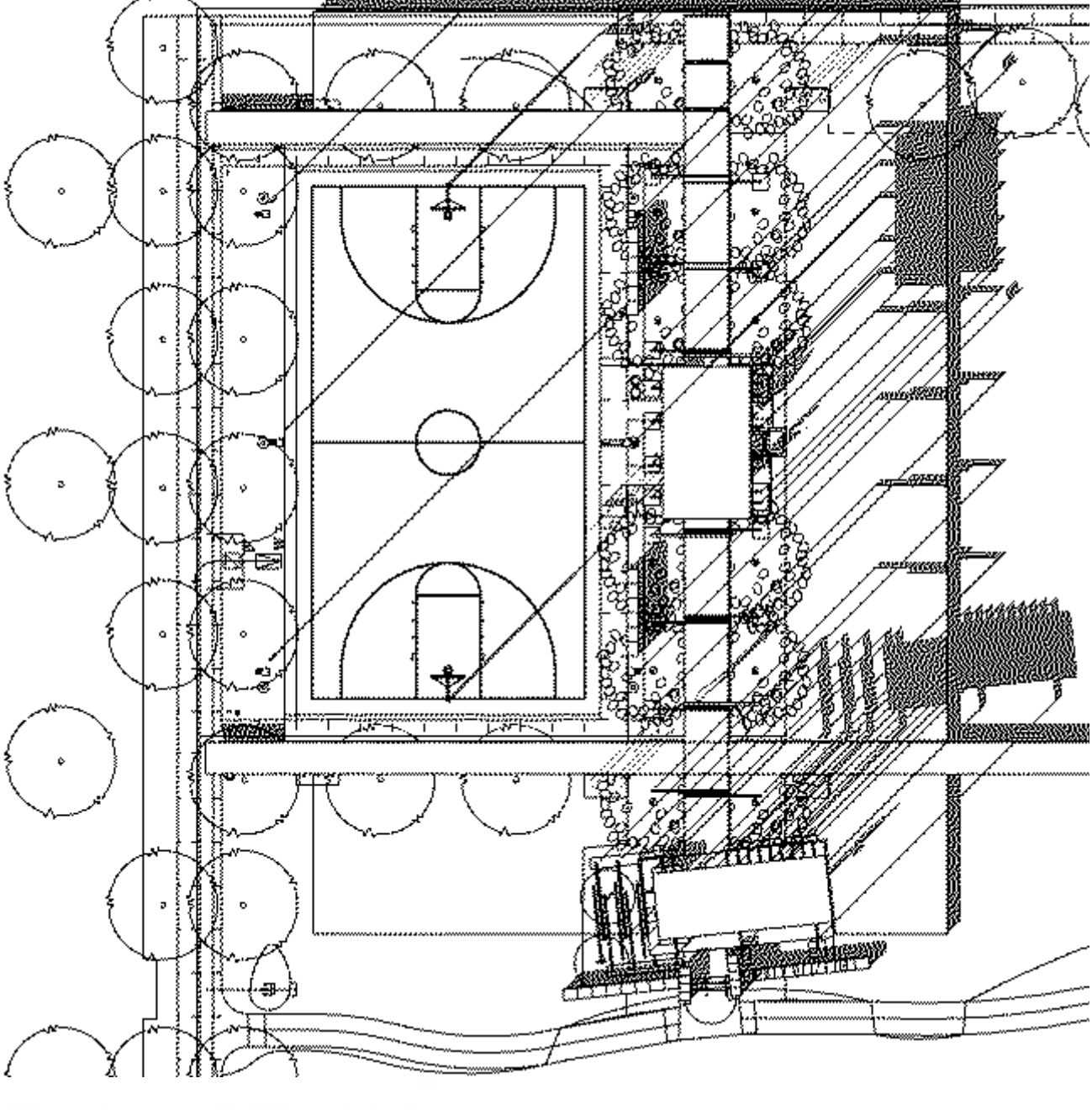
SUMMER SOLSTICE



8:30AM



Noon



4:30 PM



SOLAR STUDY

Zach Scott Greenway

Prepared for Catellus Austin, LLC by RVi Planning and Landscape Architecture, Studio 8, Stantec, and AEC
NCC Presentation - May 11th, 2022

