

Airport Expansion Development Program

Airfield Infrastructure

Construction Manager at Risk (CMR)

Solicitation No. CLMA046

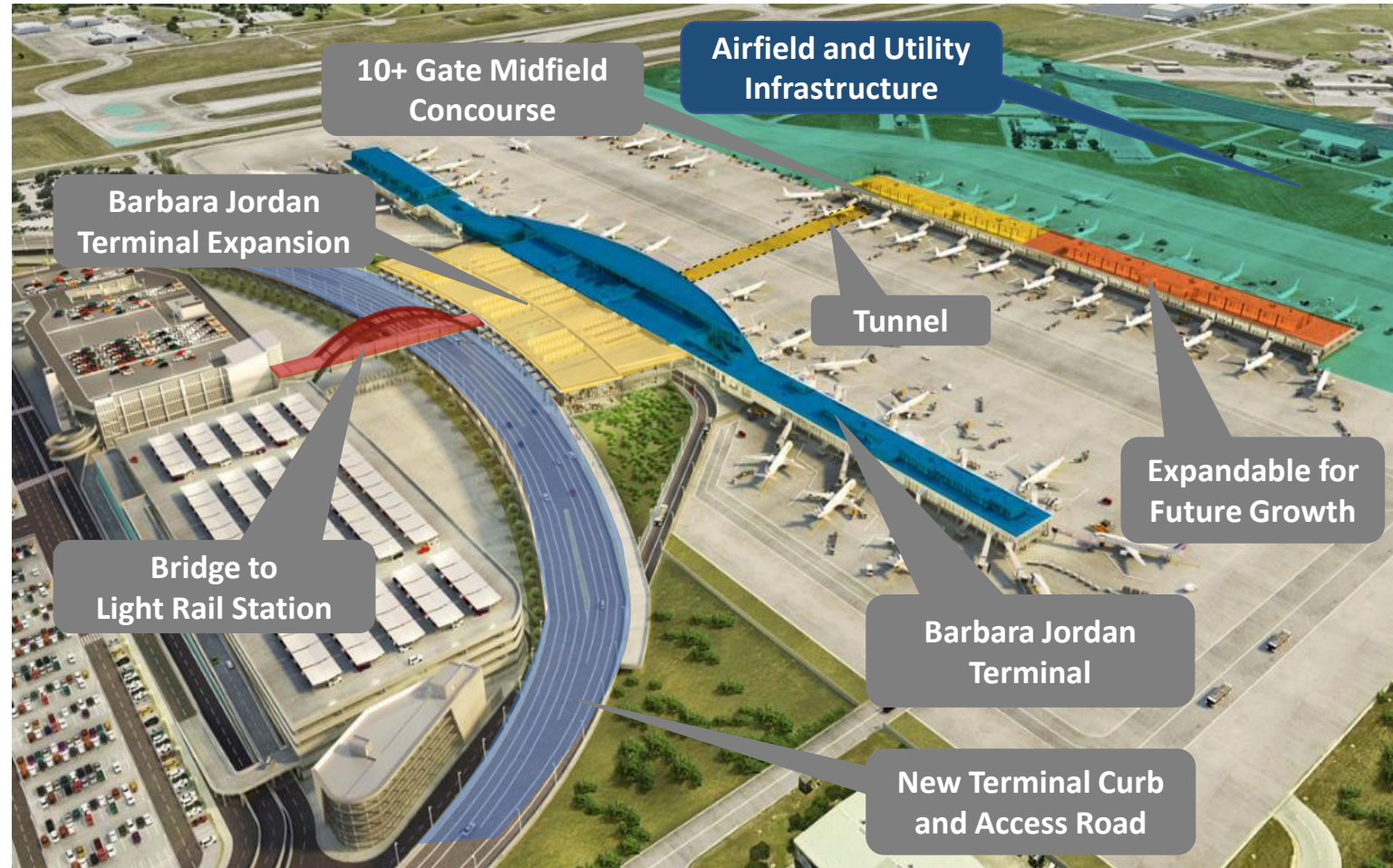


Austin-Bergstrom
International Airport



Airport Expansion Development Program (AEDP)- Major Elements

- Meet the air service needs of Central Texas
- Meet the needs of airlines serving the airport and region
- Maintain excellent passenger experience
- Provide flexible expansion for dynamic airline growth



Source: City of Austin Department of Aviation



Austin-Bergstrom
International Airport



AEDP Anticipated Schedule

| 2021 | 2022 | 2023 | 2024 | 2025 | 2026 | 2027 | 2028 | 2029 | 2030 |
|------|------|------|------|------|------|------|------|------|------|
|------|------|------|------|------|------|------|------|------|------|



- Baggage System Modernization
- Incremental Gate Capacity
- Additional Passenger Processing



- Airfield Enhancements
- Utility Infrastructure



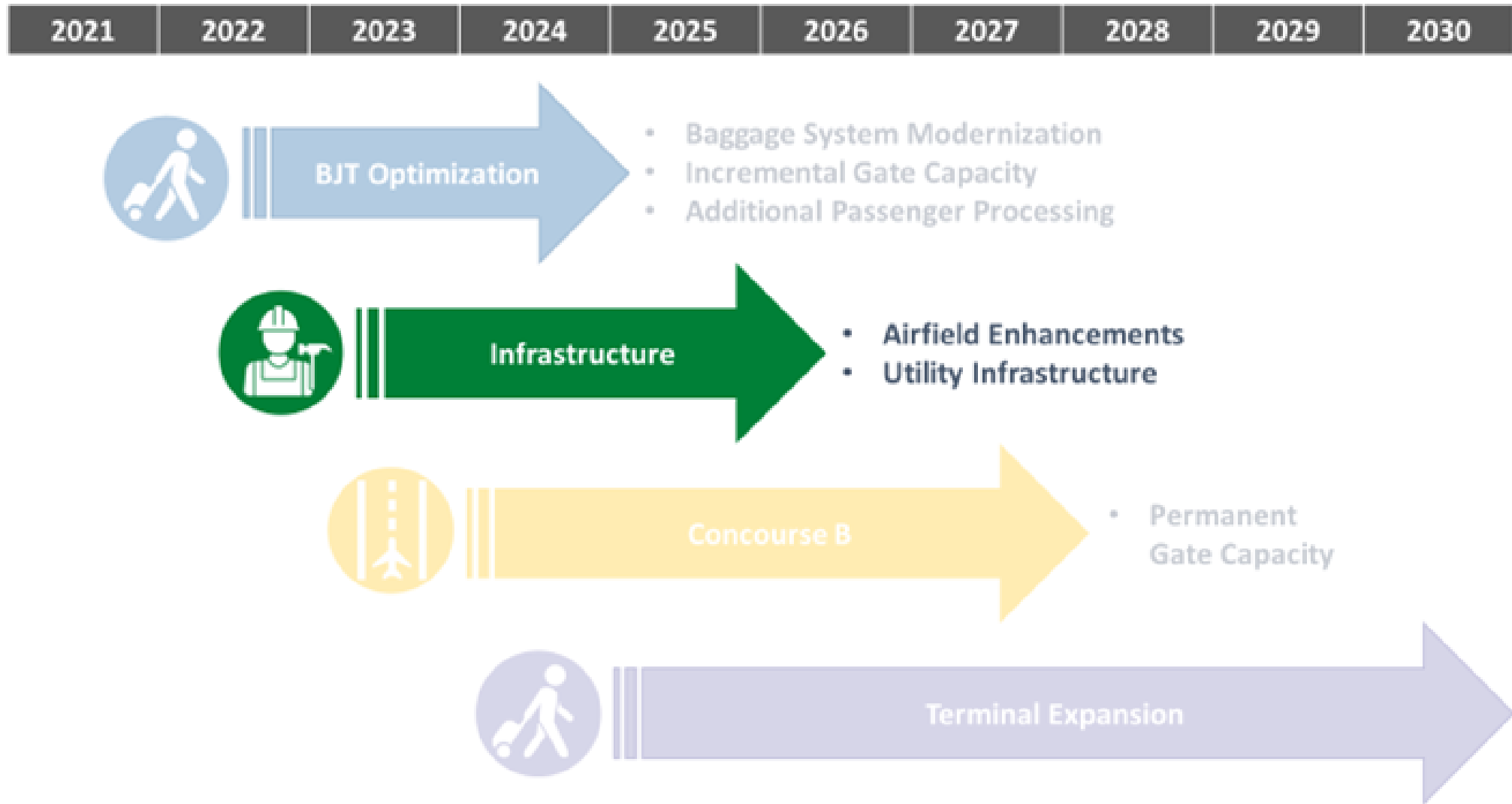
- Permanent Gate Capacity



Austin-Bergstrom
International Airport



AEDP Anticipated Schedule

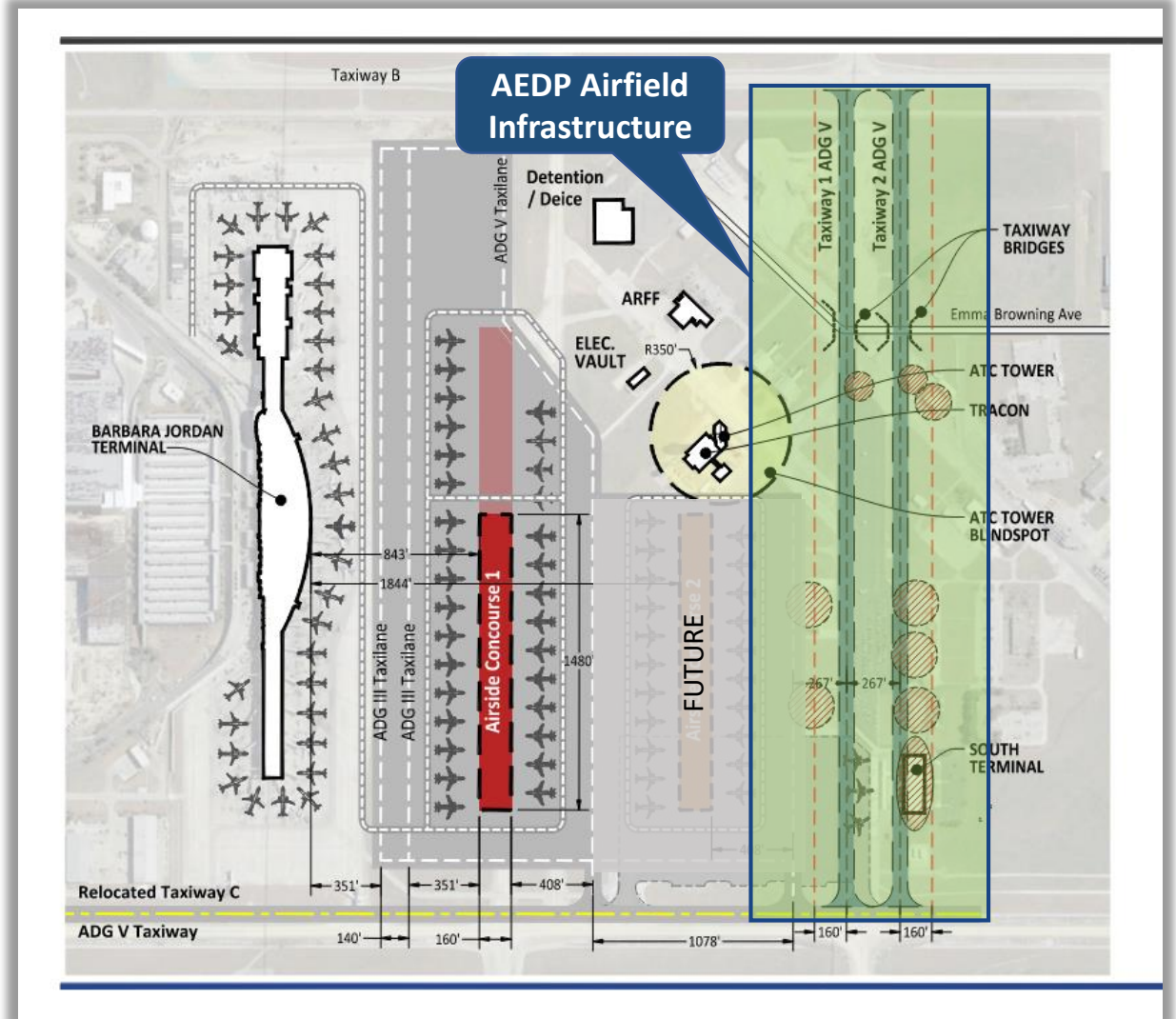


AEDP Airfield Infrastructure Project

Midfield Taxiways

The AEDP Airfield Infrastructure Project establishes new Airfield Design Group 5 midfield taxiways to provide increased connectivity between the east and west sides of the airfield and future concourses

- Pre-construction services/enabling
- Site preparations, building/infrastructure demolition
- Airfield utility infrastructure
- Taxiway bridges at Emma Browning Ave
- Airfield Design Group 5 (ADG V) midfield taxiways



Source : Evaluation of Mid-Field Taxiway Realignment, KSA 2020



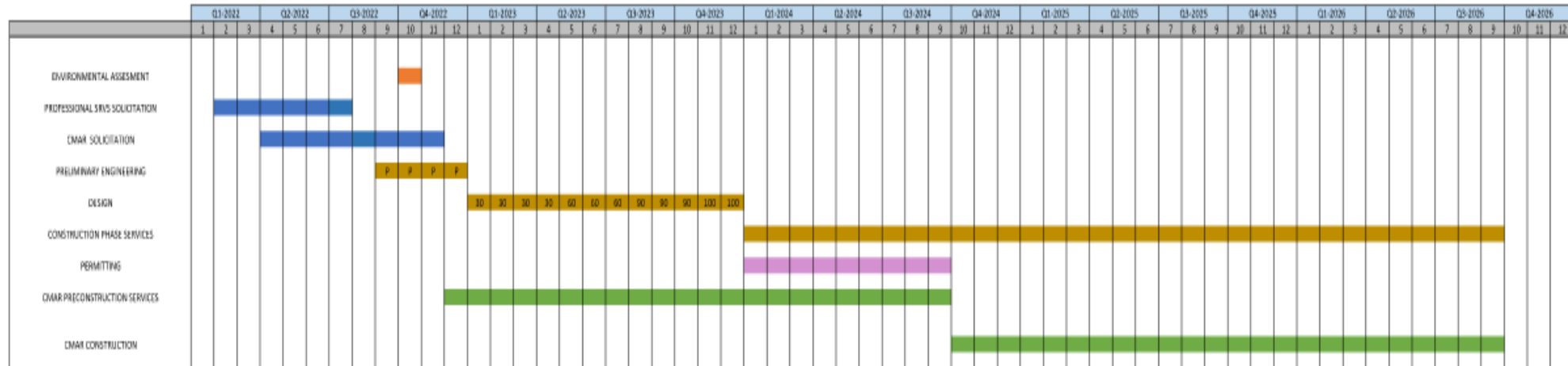
Austin-Bergstrom
International Airport



AEDP Airfield Infrastructure

Overview Schedule

| Phase | Start | Finish |
|--|-------|--------|
| Design Consultant Solicitation [Awarded] | 1/22 | 8/22 |
| CMAR Solicitation CLMA046 | 3/22 | 12/22 |
| Design Phase | 9/22 | 12/23 |
| Permitting / GMP Development Phase | 1/24 | 9/24 |
| Construction Phase | 10/24 | 10/26 |



Preconstruction Services

- Value engineering
- Cost estimating
- Construction Scheduling
- Phasing Plans
- Constructability review
- Safety input and review
- Estimating
- DBE outreach
- GMP Development



Initial Construction Scope

- Establish temporary construction including, office, utilities, haul roads, concrete production center.
- Demolish: building structures, abandoned foundations, fencing, roadway, airfield pavement and abandoned utilities within the project limits of construction.



Airfield Scope

- Prepare subgrade, base materials,
- Construct concrete taxiway pavement and asphalt shoulder pavement
- Pavement Marking
- Construct aircraft rated taxiway bridges over Emma Browning
- Construct enhanced security fencing, security checkpoint with access control and utilities
- Reconfigure Emma Browning and construct airport service roads



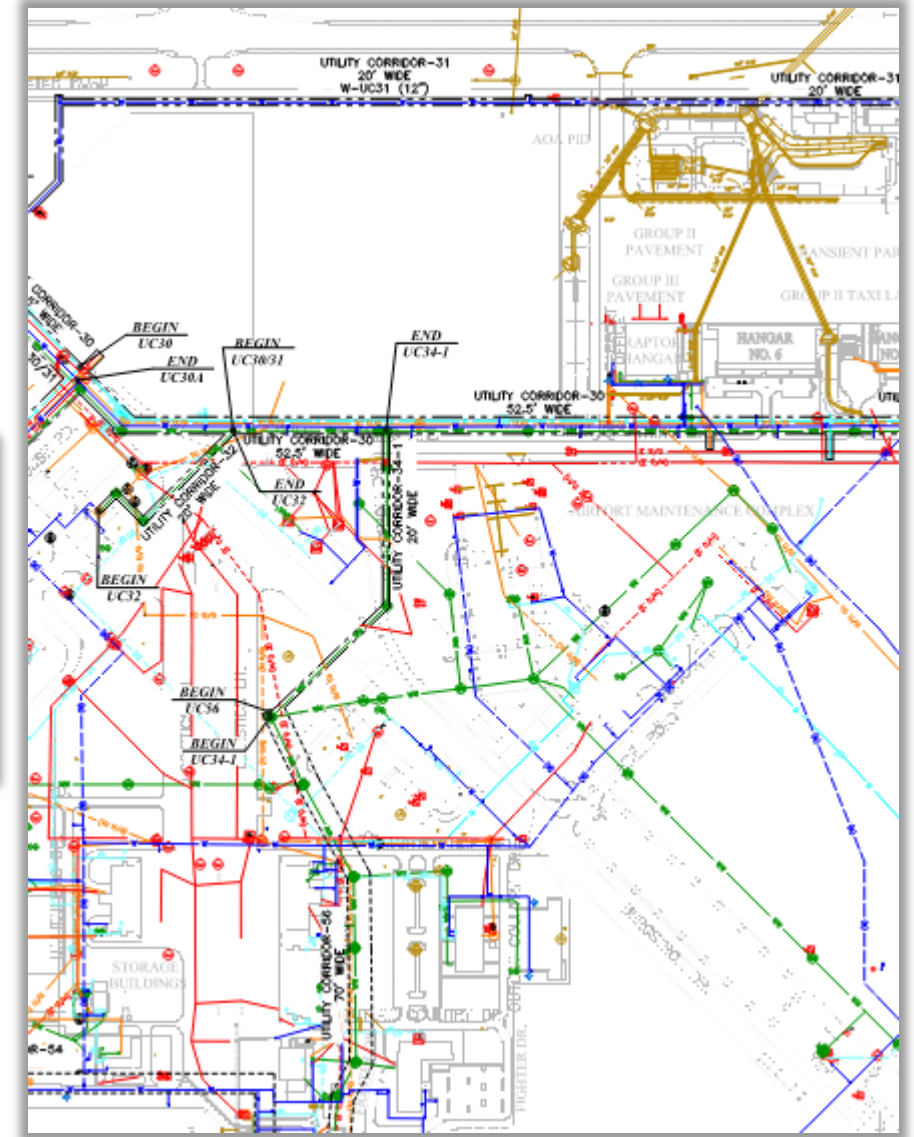
Electrical Scope

- Install airfield taxiway edge and centerline lighting fixtures and circuits, airfield signage, electrical vault improvements, install new regulators, S1 cut outs, control cabling and update airfield lighting control system
- Coordinate with Austin Energy modifications to primary power lines
- Modify secondary service to existing locations as needed (ramp lighting, water quality ponds)



Utility Scope

- Construct storm water drainage, piping networks, open channel, and aircraft rated storm structures, and implement storm water quality controls.
- Construct new water and sanitary sewer utilities in accordance with Austin Water development criteria
- Coordinate with utility providers for demolition/ relocation/ or upgrades including water, sewer, gas, fiber lines



Austin-Bergstrom
International Airport



DBE Participation

- **Preconstruction Services**
 - DBE Participation 11.12%
 - CMR DBE Outreach Coordinator
- **GMP 1 Site Preparation, Demolition, Utility Relocation**
 - DBE Participation based on GMP scope
- **GMP 2 Taxiway, Bridge, Roadway**
 - DBE Participation based on GMP scope



Next Steps

AEDP Airfield Infrastructure

- **Council Award & Contract Execution**
 - CMR Solicitation No. CLMA046 165M
 - RCA scheduled for September 1, 2022 Council
- **AAC Project Status Updates**
 - Design consultant approval June 16, 2022
 - Contract negotiation and execution July/August 2022
 - Preliminary Engineering Report expected Q1 2023



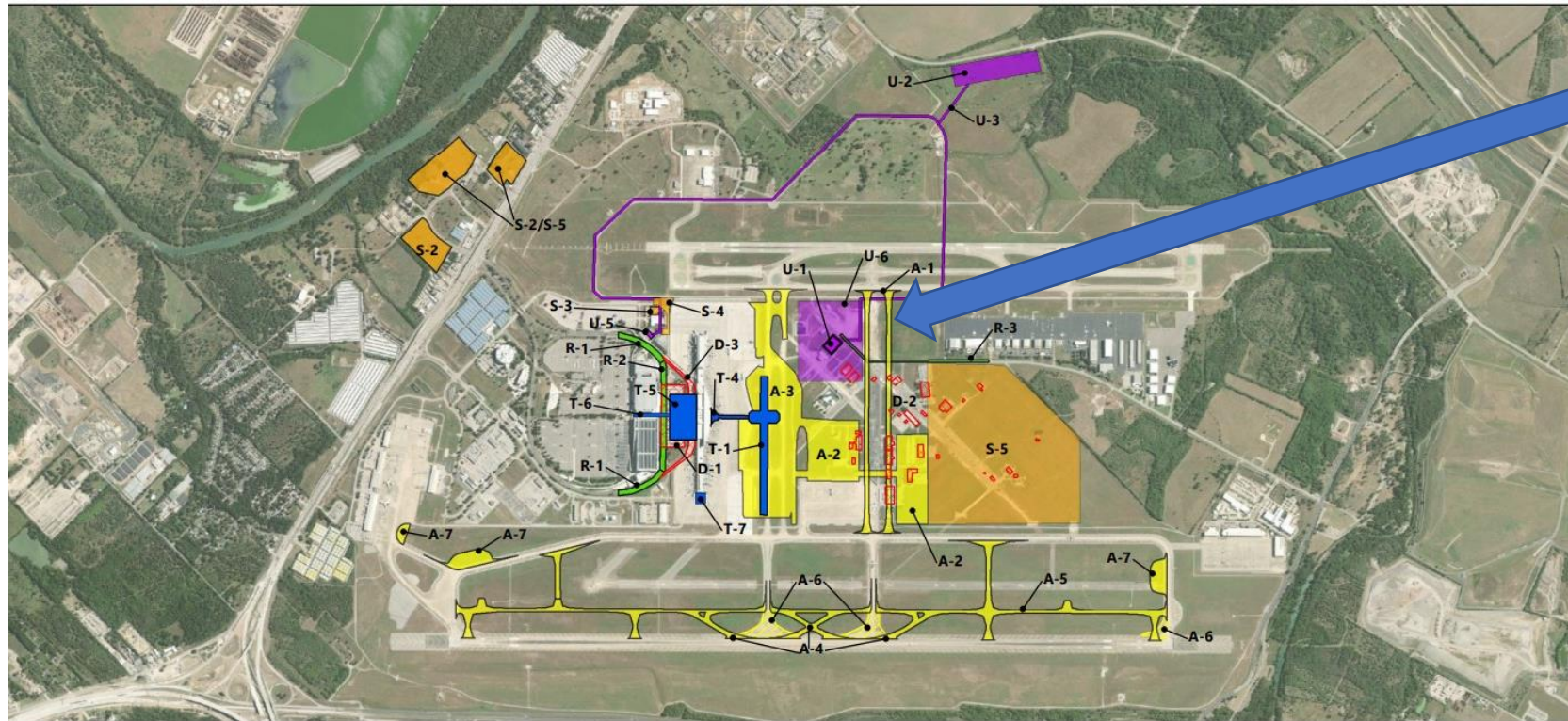
QUESTIONS



Austin-Bergstrom
International Airport



AUS Overall Development - EA



**A-1 Relocation of
Midfield Taxiways**

Legend

Airfield

A-1 Relocation of Taxiways H and J
A-2 New RON Apron
A-3 Concourse B Apron and Airfield Connections
A-4 Runway 17R-35L Rapid Exit Taxiways
A-5 New Taxiway D
A-6 Demolition of Airfield Pavement
A-7 Other Airfield Pavement
A-8 Taxiway Lighting and Signage (Not Pictured)

Terminal

T-1 New Concourse B
T-2 New Concourse B Loading Bridges (Not Pictured)
T-3 New Ramp Tower (Not Pictured)
T-4 Connector to Concourse B
T-5 New/Expanded Arrival/Departure Hall
T-6 Pedestrian Bridge to CONRAC/Parking Garage
T-7 BJT West Concourse Gate Expansion

Facility Demolition

D-1 Existing Parking Garage
D-2 South Buildings
D-3 Existing Terminal Upper Roadway

Roadways

R-1 Upgrade Existing Access Roadway Network
R-2 New Terminal Curbside Roadway

Service

S-1 Hydrant Fueling System for Concourse B (Not Pictured)
S-2 New Employee Parking Lot
S-3 Catering Facility
S-4 New Checkpoint Alpha Guard Shack
S-5 Construction Laydown Zone

Utilities and Infrastructure

U-1 New Central Utility Plant
U-2 New Austin Energy Substation
U-3 New Electrical Ductbanks
U-4 South Campus Stormwater Infrastructure (Not Pictured)
U-5 Existing Central Utility Plant Rehabilitation or Replacement
U-6 Utility Zone