

TCM & SIF Update

Joint ZAP/PC Meeting | August 30, 2022

Curtis P. Beaty, P.E. – Managing Engineer / Division Manager
Transportation Development Services Division



AUSTIN TRANSPORTATION DEPARTMENT

OVERVIEW

- **Transportation Criteria Manual (TCM)**
 - *Zoning Transportation Analysis (ZTA)*
 - *Traffic Impact Analysis (TIA)*
 - *Transportation Assessments (TA)*
 - *Transportation Demand Management (TDM)*
- **Street Impact Fee (SIF)**
 - *Implementation*
 - *Appeals*



Transportation Criteria Manual (TCM)



TCM

- Effective June 20, 2022
- Needed to ...
 - *Better reflect the ASMP goals*
 - *Improve development review efficiency/predictability*
 - *Add Transportation Demand Management (TDM) criteria*
 - *Account for the Street Impact Fee (SIF)*



TCM – Analysis Requirements

Previous TCM

Traffic Impact Analysis (TIA)

New TCM

Traffic Impact Analysis (TIA)

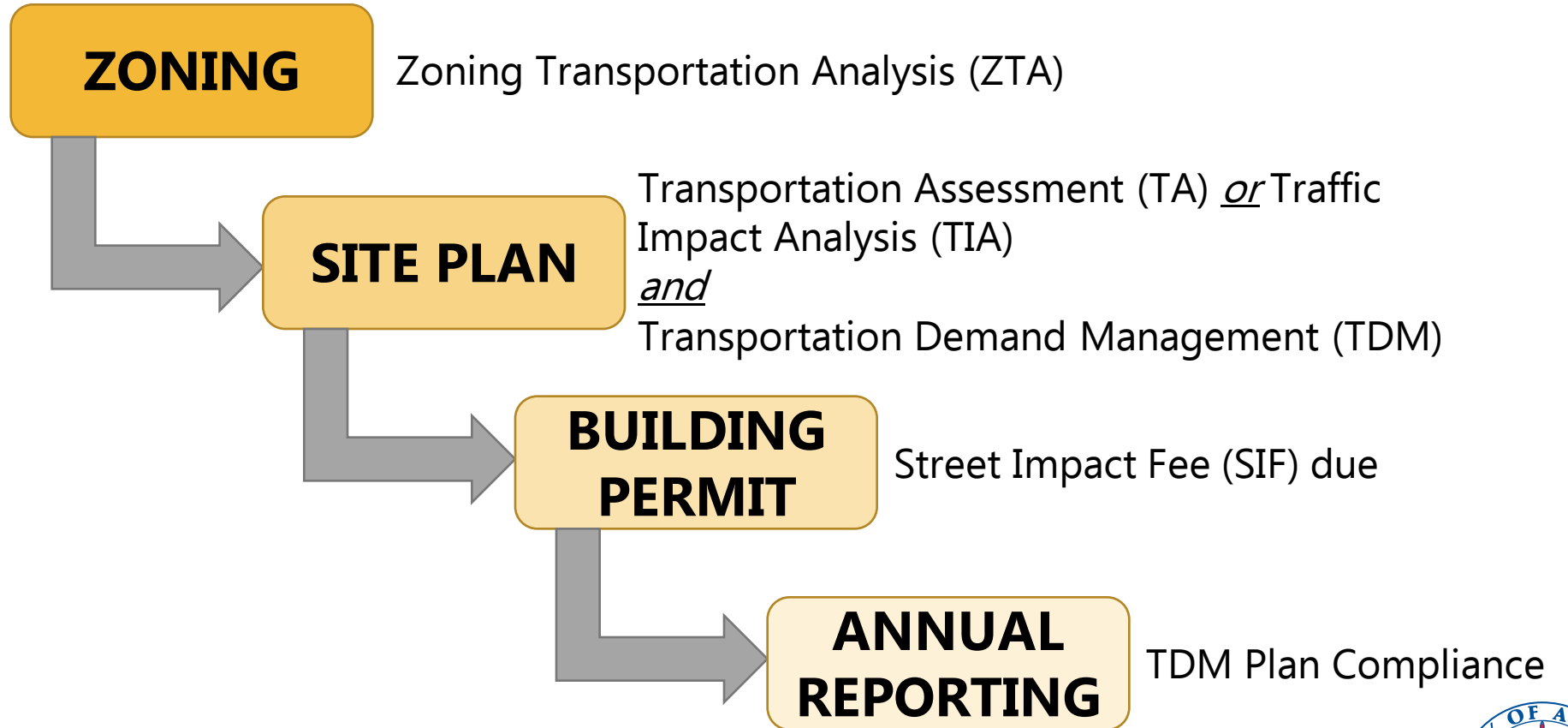
Zoning Transportation Analysis (ZTA)

Transportation Assessments (TA)

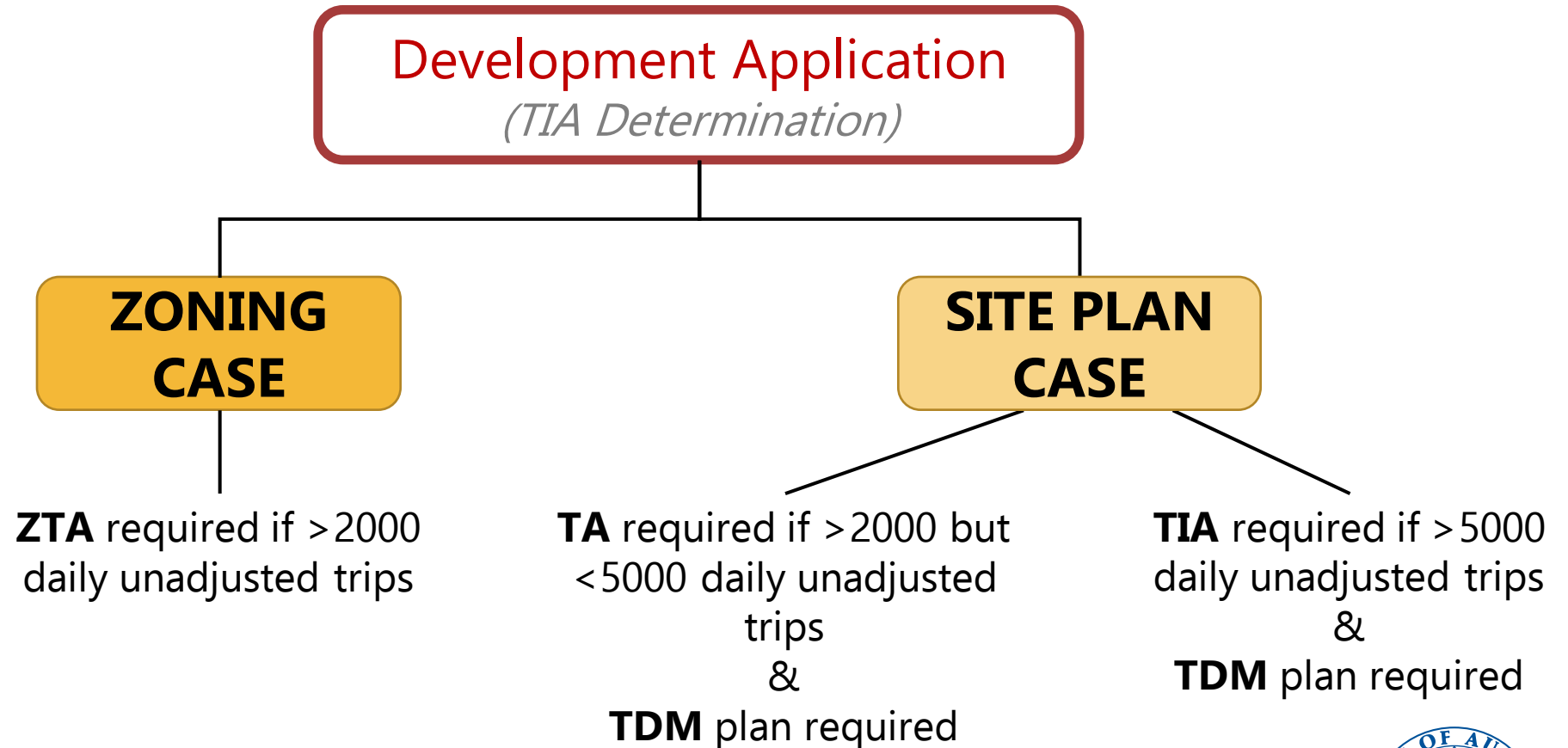
Transportation Demand Management (TDM)



When Do Things Happen?



What Applies to Which Projects?



ZTA Requirements

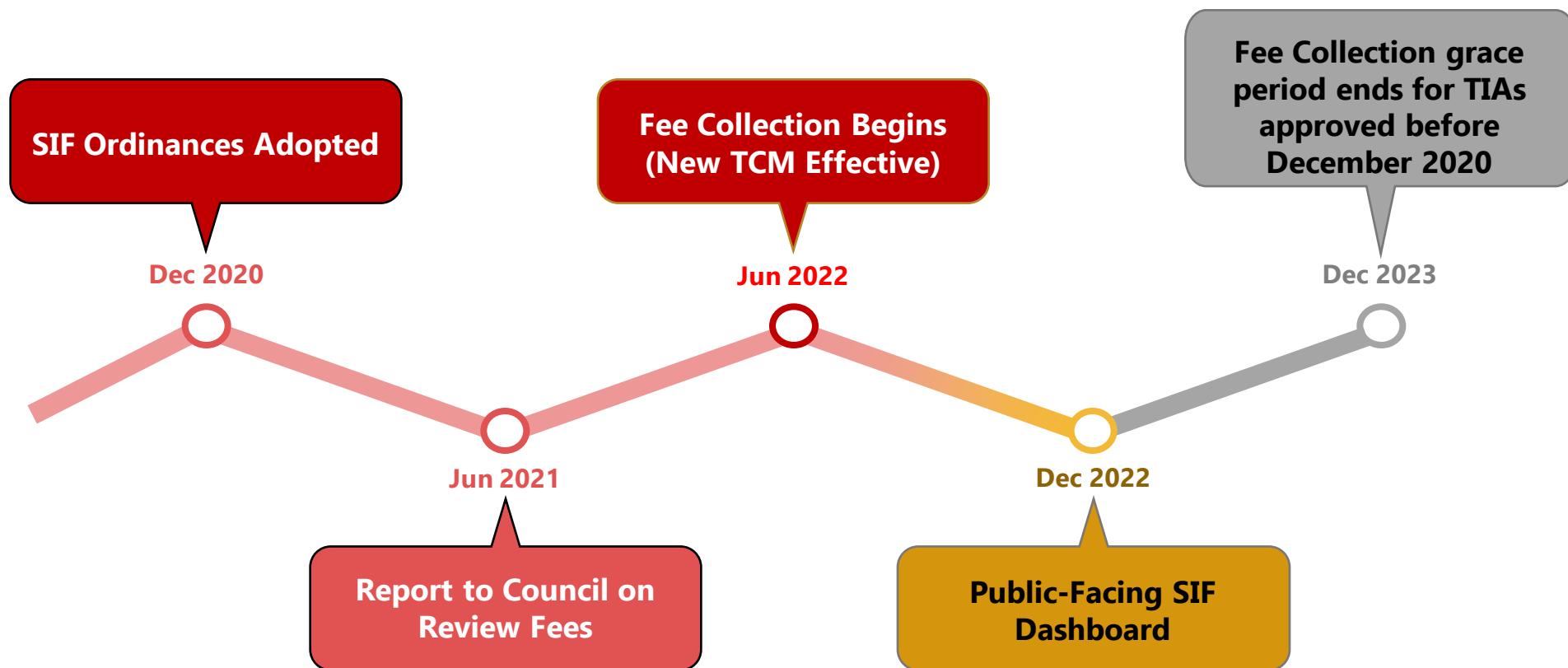
- Trip generation for most intensive use proposed
- Projected volumes analysis (*site + background*)
- Site driveway access analysis
- Anticipated TDM measures
- Assessment of right-of-way/easement needs
- Dedication of right-of-way (*if known at zoning*)



Street Impact Fee (SIF)

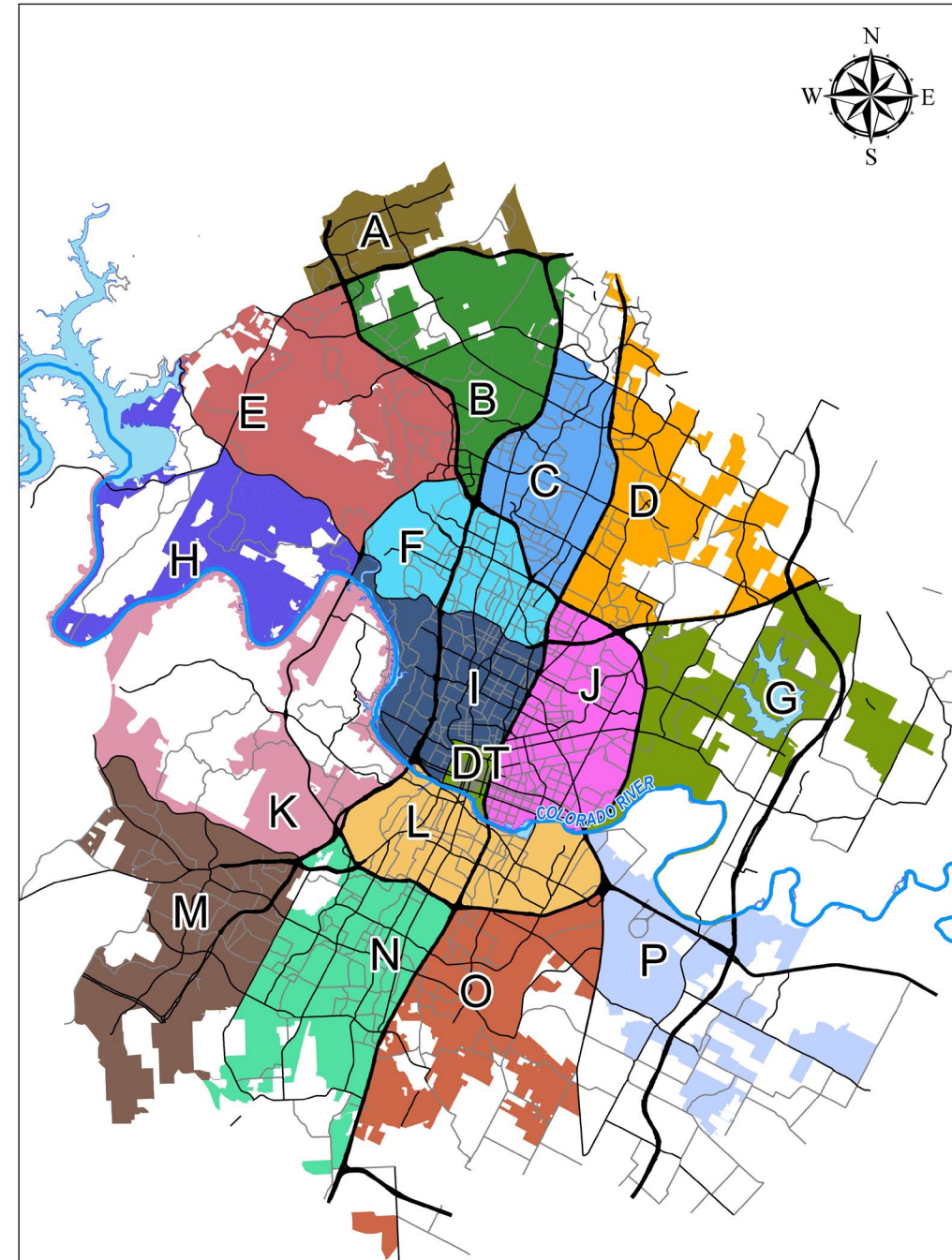


SIF Timeline



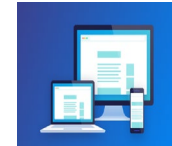
SIF Concepts

- Driven by State law
- Based on detailed study
- 17 Service Areas
- Redefines Rough Proportionality (RP) to "SIF Max"
- Eliminates mitigation "negotiations"
- More transparent and predictable to development community



SIF Implementation

- AMANDA programming Project prioritization – Council member briefings
- Stakeholder outreach



- SIF guidelines (*public*) and SOPs (*staff*)
- Fee collection – June 21, 2022

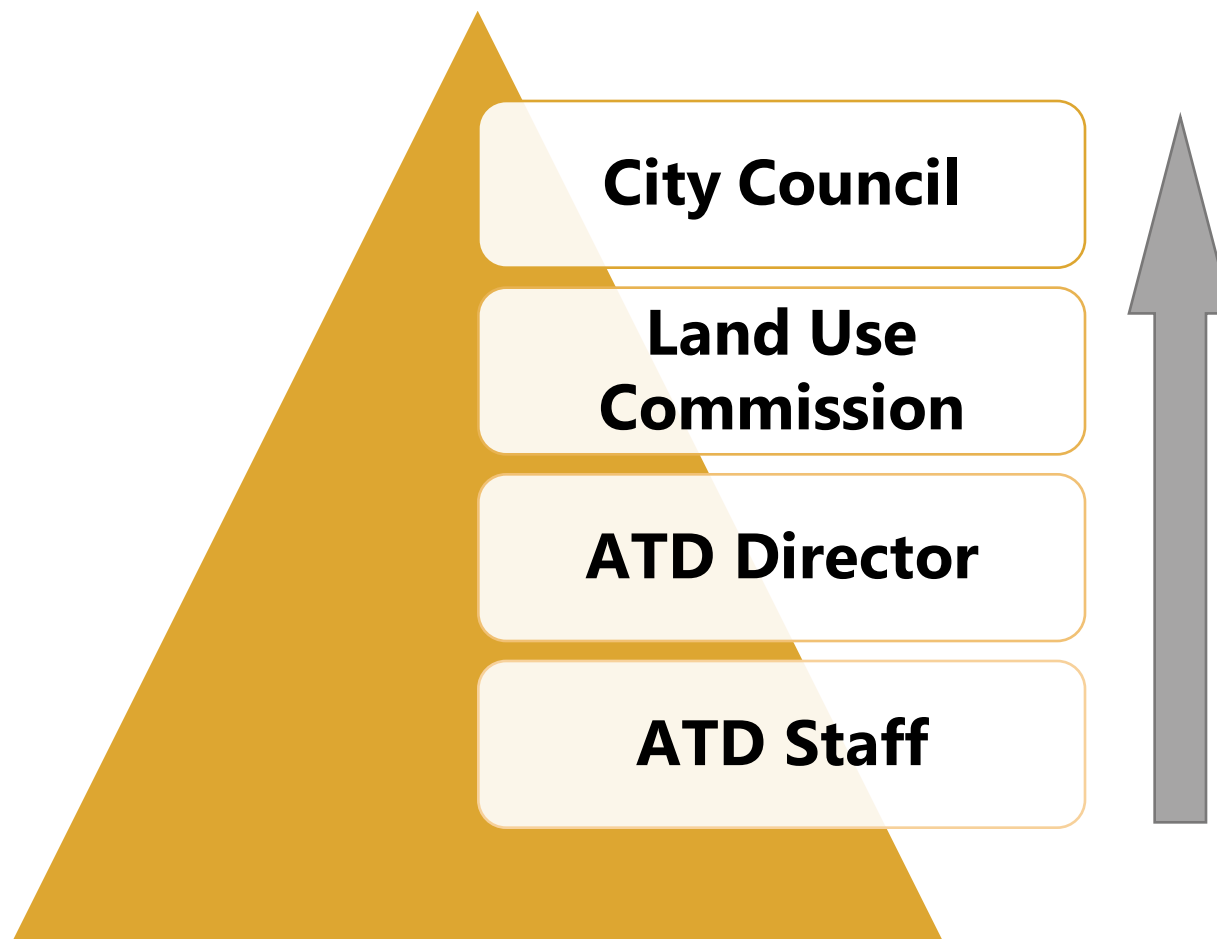


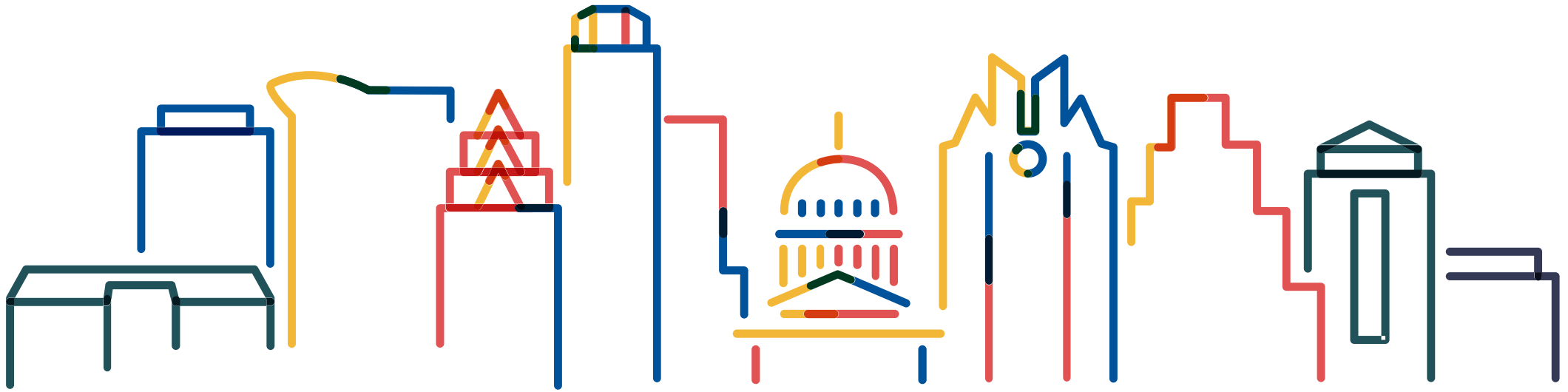
Recent Questions

- Do non-profits have to pay SIF?
 - Can I "bank" offset credits from one project to use on another?
- Do the SIF reductions (parking, transit, and internal capture) align with the new TCM?
- Does all affordable housing give me a reduction in my assessed SIF?
- What if I cannot afford the fee?



SIF Appeals Process





TCM & SIF Update

Joint ZAP/PC Meeting | August 30, 2022

Curtis P. Beaty, P.E. – Managing Engineer / Division Manager
Transportation Development Services Division



AUSTIN TRANSPORTATION DEPARTMENT