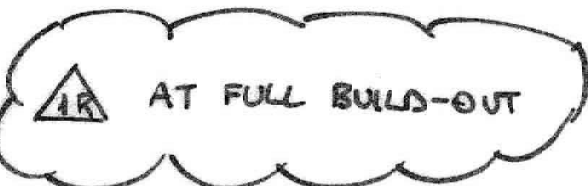


SETON MEDICAL CENTER
C814-92-0006

SETON MEDICAL CENTER

P.U.D.

SUMMARY TABLE



AMENDMENT NO.2

Proposed FAR	1.48:1	1.9:1
Impervious Cover	424,074 SF 79.16%	423,513 sf (79.62%)
Building Coverage	272,388 SF (51.2%)	334,830 sf (62.95 %)
Total Square Footage of Building	786,600	1,144,755 sf
Height	120 ft.	
Setbacks		
Street Front Yard (Medical Parkway)	25 ft.	
Street Side Yard (West 38th Street)	15 ft.	
Street Side Yard (West 34th Street)	10 ft.	
Percentage Open Space for the Site	11.9%	

Legal Description

Lot 1, Seton Medical Center Addition No. Two
Book 8, Pages 73-74

Lots 8, 9, 17 and 18, Block 5, Glen Ridge Addition
Book 1, Page 65

Street Address

1201 West 38 Street

Submittal Date

September 9, 1992

SETON MEDICAL CENTER PLANNED UNIT DEVELOPMENT

ZONING SUBMITTAL

UPDATE #3 5/10/93

INDEX OF DRAWINGS

SHEET

1. COVER
2. COMPREHENSIVE PLAN
3. SETON MEDICAL CENTER PUD - EXISTING CONDITIONS
4. SETON MEDICAL CENTER PUD - SITE STAGE ONE CONSTRUCTION
5. SETON MEDICAL CENTER PUD - LANDSCAPE PLAN STAGE ONE CONSTRUCTION
6. SETON MEDICAL CENTER PUD - LANDSCAPE PLAN STAGE TWO CONSTRUCTION
7. SETON MEDICAL CENTER PUD - EXPANSION PLAN 2022
8. SETON MEDICAL CENTER PUD - LANDSCAPE PLAN 2022

AMENDMENT NO.2

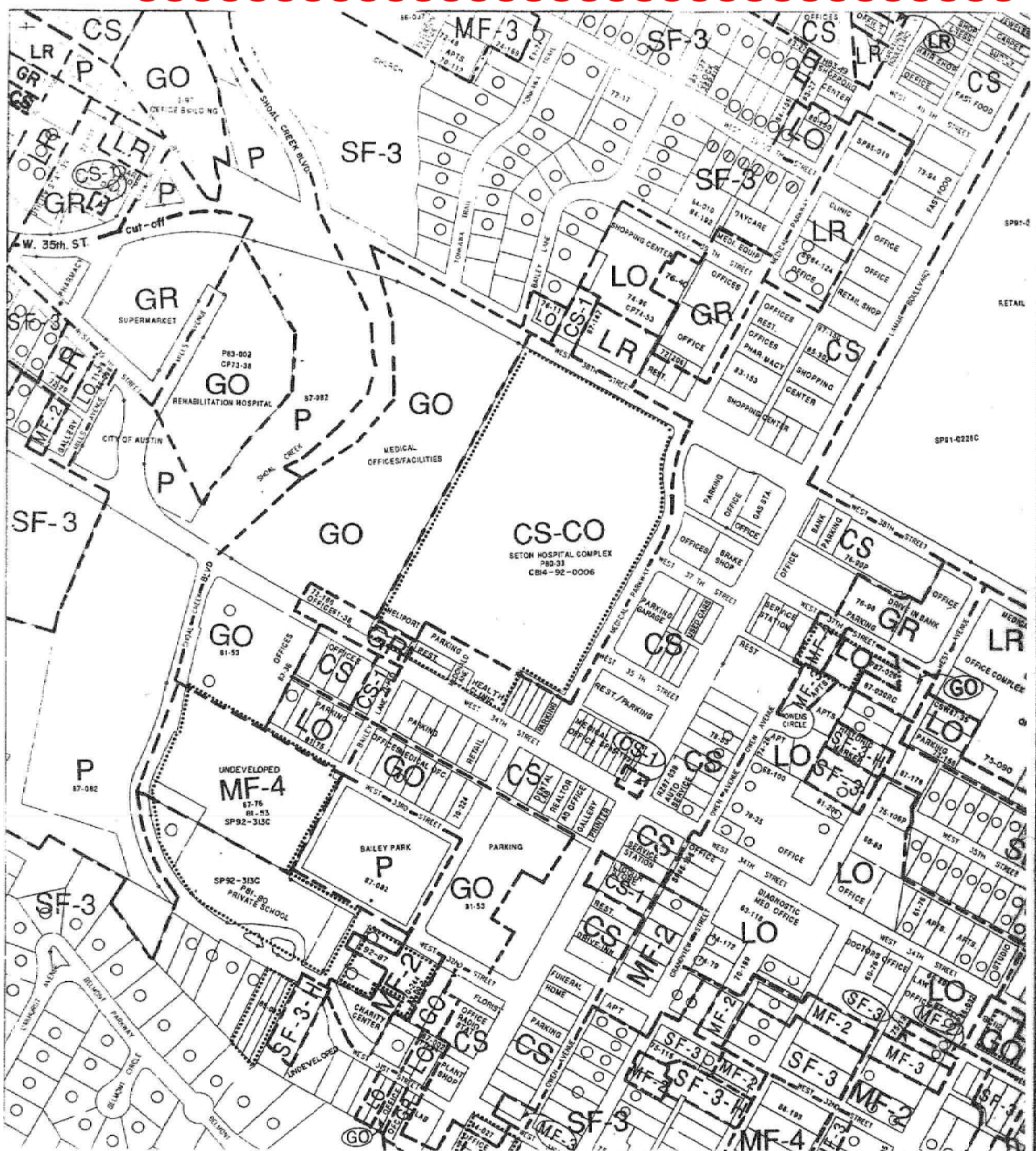
REVISIONS/ CORRECTIONS						
NUMBER	DESCRIPTION	REVISION/ADDED (A) VOID (V) SHEET NO.	TOTAL # OF SHEETS IN PLAN SET	NET CHANGE IMPERVIOUS COVER (SQ. FT.)	TOTAL SITE IMPERVIOUS COVER (SQ. FT.) %	CITY OF AUSTIN APPROVAL DATE
1R	STAGE ONE CONSTRUCTION ADDED TO PLANS	4(A), 5(R) 6(R)	6	0	421,074 79.16%	
1C	EXPANDED AMBULANCE PARKING	1(R) 4(R)	6	258	421,332 79.21%	2/11/03



VICINITY MAP

AMENDMENT NO.2

1. THE PROPOSED DEVELOPMENT WITH THE 2ND AMENDMENT SHALL COMPLY WITH LEED SILVER.
2. THE PROPOSED DEVELOPMENT WITH THE 2ND AMENDMENT SHALL PROVIDE 4" TREE PLANTINGS AND 3 AND 5 GALLON SHRUBS. ALL PLANTED MATERIAL WILL BE CONTAINER GROWN MATERIAL. TREE PLANTINGS WILL USE CENTRAL TEXAS NATIVE SEED STOCK AND INSTALLED WITH ADEQUATE SOIL VOLUME. ADDITIONAL SOIL VOLUME WILL BE PROVIDED FOR PROPOSED SHADE TREES.
3. THE PROPOSED DEVELOPMENT WITH THE 2ND AMENDMENT SHALL COMPLY WITH DARK SKIES INITIATIVES AS FOLLOWS:
a. REQUIRE WARM LIGHT: LOW KELVIN RATED LIGHTS (3000 KELVIN OR LESS)
b. OUTDOOR LIGHTING SHALL BE SHIELDED
c. LIGHT TRESPASS WILL BE PREVENTED
4. THE PROPOSED DEVELOPMENT WITH THE 2ND AMENDMENT SHALL HAVE GLASS REFLECTIVITY LESS THAN 15%.
5. THE PROPOSED DEVELOPMENT WITH THE 2ND AMENDMENT SHALL FOLLOW AN INTEGRATED PEST MANAGEMENT PLAN.
6. THE PROPOSED DEVELOPMENT WITH THE 2ND AMENDMENT SHALL CAPTURE A/C CONDENSATION FOR COOLING TOWERS.



ZONING MAP



PAGE SOUTHERLAND PAGE

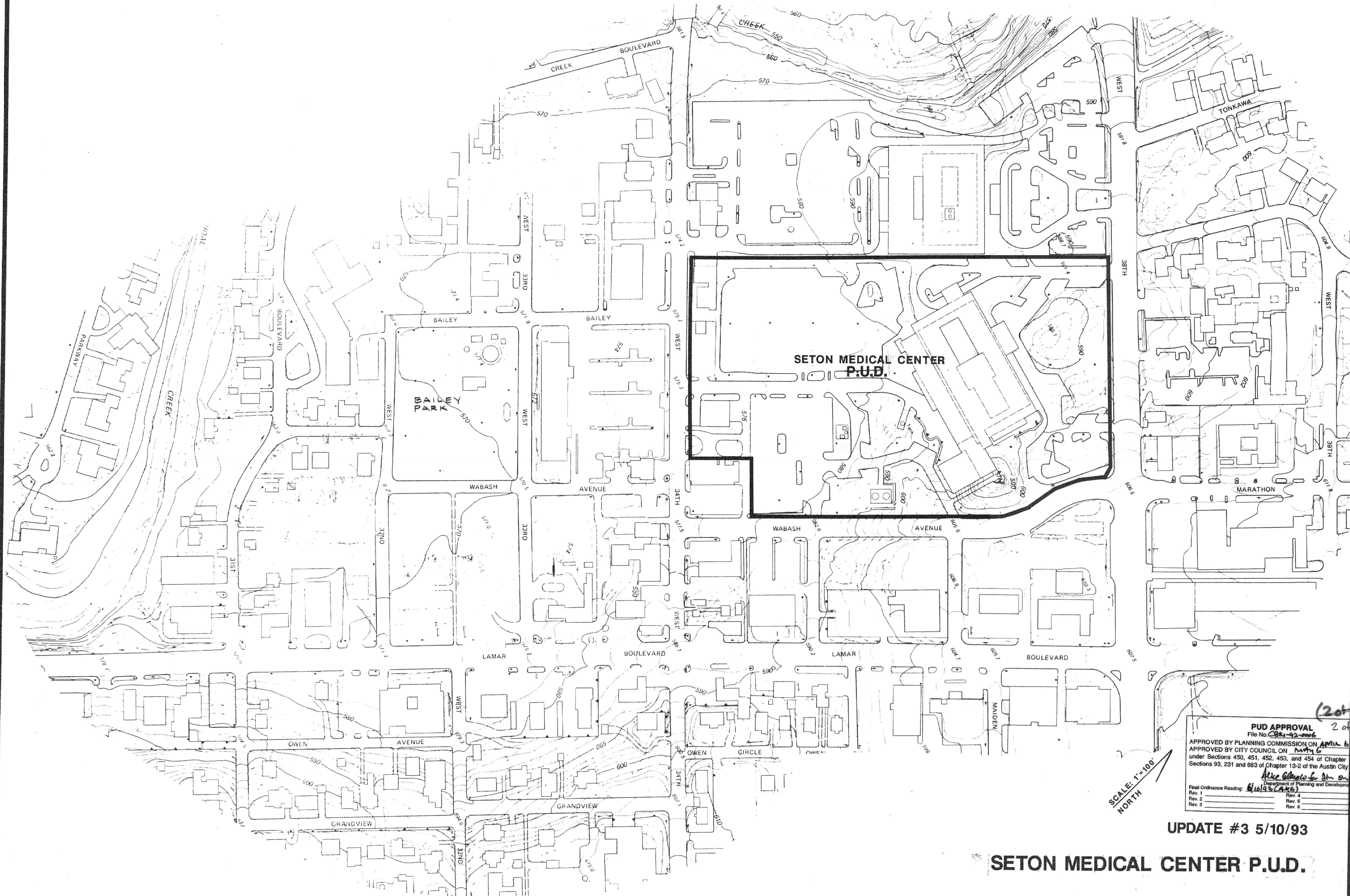
AUSTIN TEXAS
ARCHITECTS
ENGINEERS
CONSULTANTS

606 WEST AVE.
AUSTIN, TX. 78701
(512) 472-6721

RELEASE OF THIS APPLICATION DOES NOT CONSTITUTE A VERIFICATION OF ALL DATA, INFORMATION AND CALCULATIONS SUPPLIED BY THE APPLICANT. THE ENGINEER OF RECORD IS SOLELY RESPONSIBLE FOR THE COMPLETENESS, ACCURACY AND ADEQUACY OF HIS/HER SUBMITTAL, WHETHER OR NOT THE APPLICATION IS REVIEWED FOR CODE COMPLIANCE BY CITY ENGINEERS

PUD APPROVAL 1 of 6
File No. C814-92-0006
APPROVED BY PLANNING COMMISSION ON APRIL 6, 1993
APPROVED BY CITY COUNCIL ON MAY 6, 1993
under Sections 450, 451, 452, 453, and 454 of Chapter 13-1 and
Sections 93, 231 and 683 of Chapter 13-2 of the Austin City Code
Alice G. Brown for City Council
Department of Planning and Development
Final Ordinance Reading 12/5/2002
Rev. 1 12/5/2002
Rev. 2
Rev. 3
Rev. 4
Rev. 5
Rev. 6

FILE NO. C814-92-0006



SCALE: 1"=100'
NORTH

UPDATE #3 5/10/93

SETON MEDICAL CENTER P.U.D.

COMPREHENSIVE PLAN

AMENDMENT NO.2



PAGE SOUTHERLAND PAGE
AUSTIN TEXAS
ARCHITECTS
ENGINEERS
CONSULTANTS
606 WEST AVE.
AUSTIN, TX. 78701
(512) 472-6721

**SETON MEDICAL CENTER
EXPANSION PROJECT**

PUD APPROVAL
File No. 201-5
APPROVED BY PLANNING COMMISSION ON APR 6, 1993
APPROVED BY CITY COUNCIL ON MAY 6, 1993
under Sections 450, 451, 452, 453, and 454 of Chapter 13-1 and
Sections 93, 231 and 683 of Chapter 13-2 of the Austin City Code
Alvin G. Gentry, Jr.
Department of Planning and Development
Final Ordinance Reading: 4/16/93 (LCA)
Rev. 1 _____ Rev. 4 _____
Rev. 2 _____ Rev. 5 _____
Rev. 3 _____ Rev. 6 _____

JOB NO. 172032
DATE 7-9-92
DRAWN MTB
CHECKED LCA

12