



**Annexation - Conduct Public Hearing  
CITY OF AUSTIN  
RECOMMENDATION FOR COUNCIL ACTION**

**AGENDA ITEM NO.:** 34  
**AGENDA DATE:** Thu 10/07/2004  
**PAGE:** 1 of 1

**SUBJECT:** Conduct a public hearing for the full purpose annexation of the U.S. 290 / Ed Bluestein ROW Area (Approximately 16 acres in Travis County at the southeast corner of the intersection of US Highway 290 East and Ed Bluestein).

**AMOUNT & SOURCE OF FUNDING:** N/A

**FISCAL NOTE:** N/A

**REQUESTING** Transportation, Planning **DIRECTOR'S**  
**DEPARTMENT:**and Sustainability **AUTHORIZATION:** Austan Librach

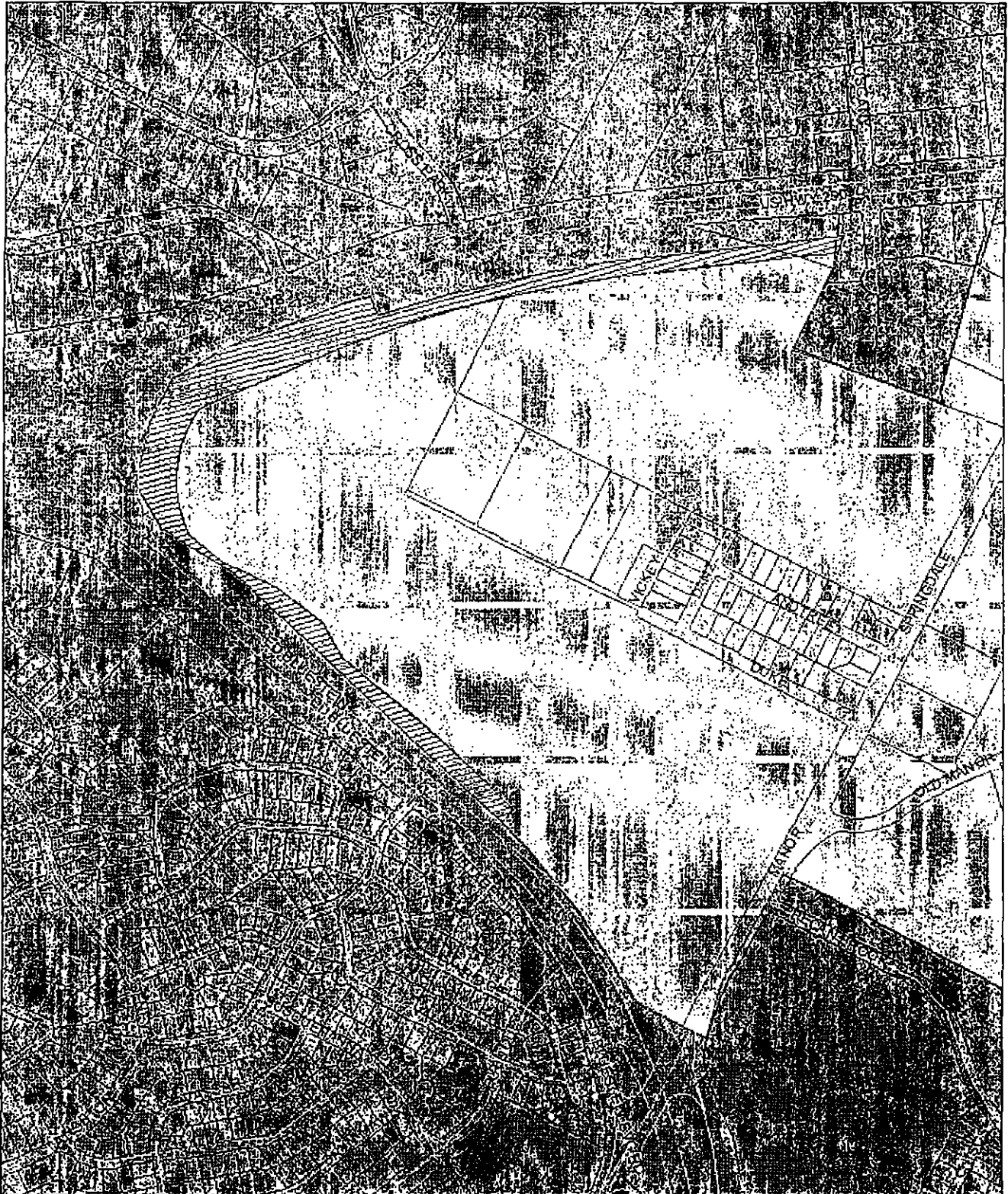
**FOR MORE INFORMATION CONTACT:** Ben Luckens, 974-2695; Virigina Collier, 974-2022;  
Sylvia Arzola, 974-6448

**PRIOR COUNCIL ACTION:** Set public hearing on 9/2/04

**BOARD AND COMMISSION ACTION:** N/A

---





The U.S. 290 / Ed Bluestein ROW Area (approximately 16 acres) is located in Travis County at the southeast corner of the intersection of US Highway 290 East and Ed Bluestein and includes approximately one and one quarter miles of right-of-way (ROW). This area is adjacent to the current city limit on the west side and at both ends of this segment of ROW.



## 290 / Ed Bluestein ROW

City of Austin  
 Transportation, Planning & Sustainability Dept  
 July 8, 2004

0.1 0.05 0 0.1 Miles

-  Proposed Annexation Area
-  City of Austin Full Purpose
-  City of Austin Limited Purpose
-  City of Austin ETJ

