



**Annexation - Conduct Public Hearing
CITY OF AUSTIN
RECOMMENDATION FOR COUNCIL ACTION**

AGENDA ITEM NO.: 53
AGENDA DATE: Thu 10/21/2004
PAGE: 1 of 1

SUBJECT: Conduct a public hearing for the full purpose annexation of the Ferguson Cutoff Area (Approximately 98.7 acres in Travis County south of US Highway 290 East at the intersection of US Highway 290 East and Springdale and at the intersection of US Highway 290 East and Ferguson Cutoff).

AMOUNT & SOURCE OF FUNDING: N/A

FISCAL NOTE: N/A

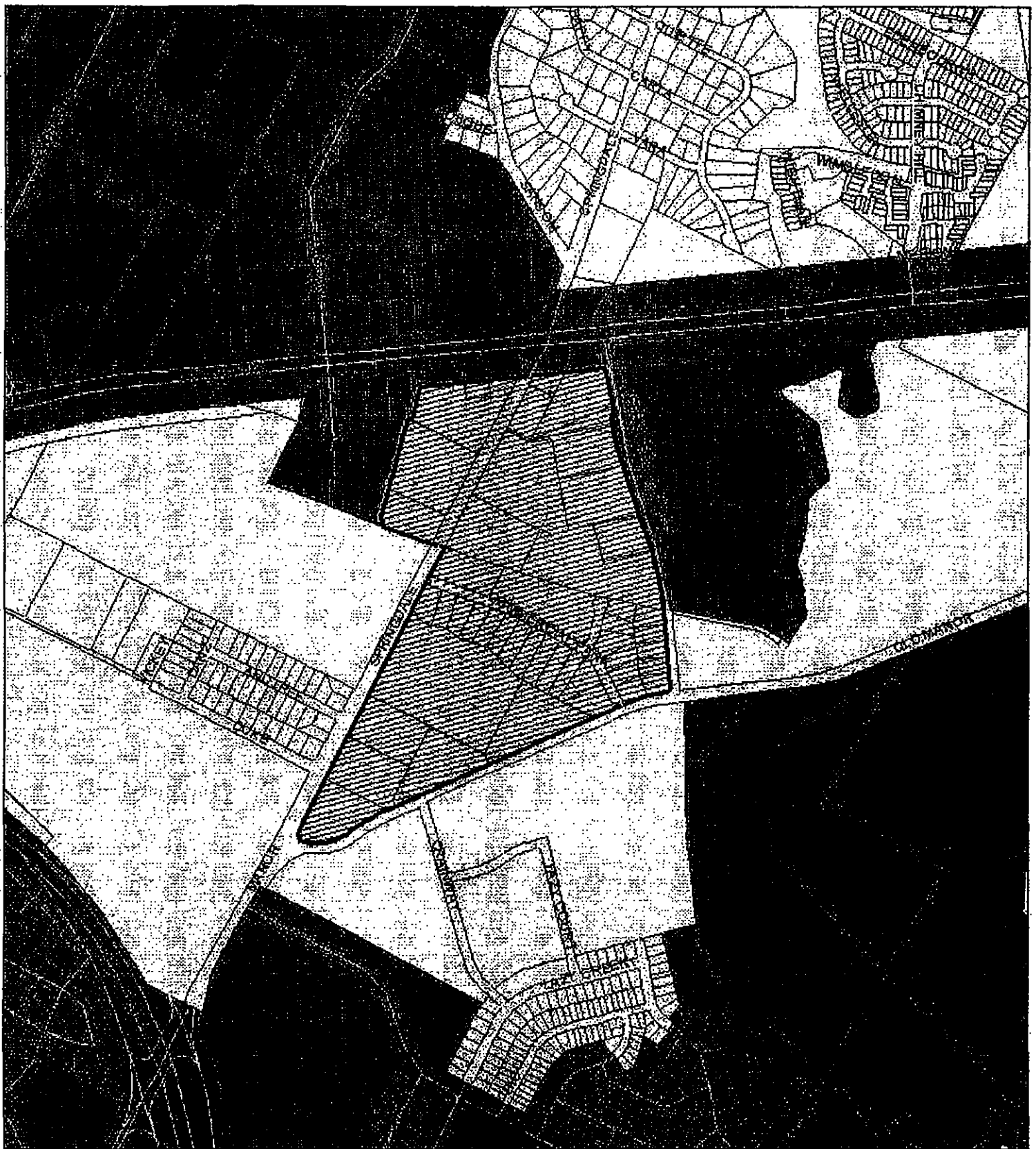
REQUESTING Neighborhood Planning **DIRECTOR'S**
DEPARTMENT: and Zoning **AUTHORIZATION:** Alice Glasco

FOR MORE INFORMATION CONTACT: Ben Luckens, 974-2695; Virginia Collier, 974-2022;
Sylvia Arzola, 974-6448




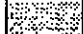
PRIOR COUNCIL ACTION: Public hearing set on 9/30/04.

BOARD AND COMMISSION ACTION:

The Ferguson Cutoff area (approximately 98.7 acres) is located in Travis County approximately 200 feet south of the intersection of US Highway 290 East and Ferguson Cutoff and is adjacent to the current city limit on the north side. This area includes a mix of existing commercial and industrial tracts.



Ferguson Cutoff Area **C7a-04-021**

-  Proposed Annexation Area
-  City of Austin Full Purpose
-  City of Austin Limited Purpose
-  City of Austin ETJ



City of Austin
 Transportation, Planning & Sustainability Dept
 August 27, 2004

